

Colby



Colby College
Digital Commons @ Colby

Colby Alumnus

Colby College Archives

1958

Colby Alumnus Vol. 47, No. 1 Fall 1957

Colby College

Follow this and additional works at: <https://digitalcommons.colby.edu/alumnus>



Part of the [Higher Education Commons](#)

Recommended Citation

Colby College, "Colby Alumnus Vol. 47, No. 1 Fall 1957" (1958). *Colby Alumnus*. 202.
<https://digitalcommons.colby.edu/alumnus/202>

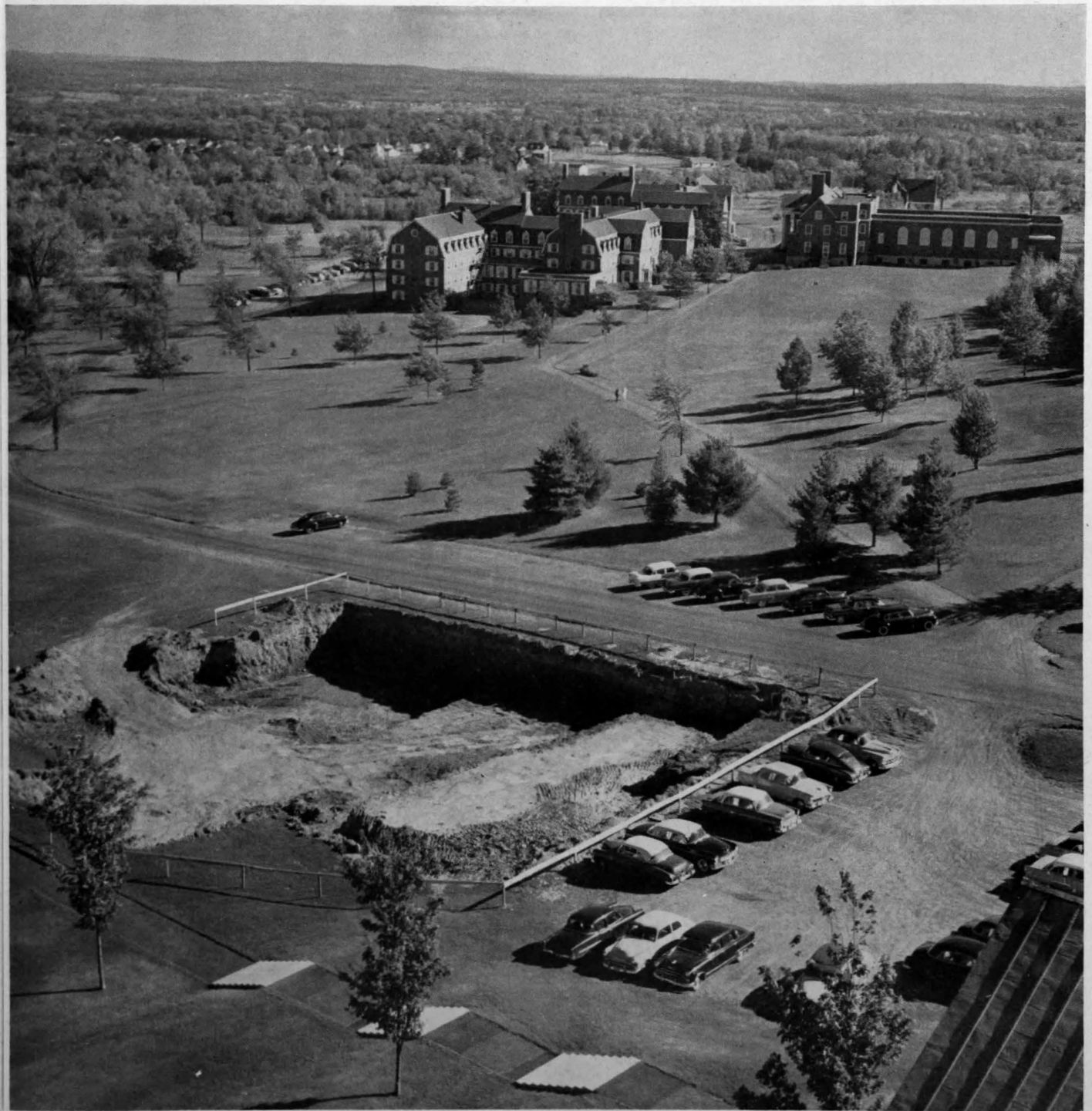
This Other is brought to you for free and open access by the Colby College Archives at Digital Commons @ Colby. It has been accepted for inclusion in Colby Alumnus by an authorized administrator of Digital Commons @ Colby.

1276-1
3

THE COLBY ALUMNUS



FALL 1957





If you want to know what the college crisis means to you, send for the free booklet, "The Closing College Door," to: Box 36, Times Square Station, New York 36, New York.

Perhaps it's later than you think!

Your son. His eager young mind is on football now. But soon, in high school, he'll be grappling with Science, and English and History. Then, almost before you know it, you and he will be trying to decide on where he'll go to college.

Will you be too late?

At this very moment our colleges and universities are facing a crisis. Despite all their efforts to meet the challenge of growing pressure for applications, they are hampered by lack of funds. That pressure will continue and increase. The number of boys and girls who want to go to college—and will be qualified to go to college—is expected to *double* in 10 years.

Meanwhile the needed expansion is far more than a matter of adding classrooms, laboratories and dormitory space. There must be a corresponding increase in faculty strength. The profession of college teaching must attract and hold more first-rate minds.

This problem vitally affects not only students and their parents but business and industry as well. There is a pressing need for scientists—for teachers and civic leaders—for business administrators and home-makers—who have learned to think well and choose wisely. They are and will continue to be the backbone of our strength as a nation.

Freedom needs educated people. In this country, those who *lead* are those who *know*. Help the colleges or universities of your choice—now!

Sponsored as a public service, in cooperation with the Council for Financial Aid to Education, by



Colby Alumni Association



olbyettes — " We Love Little Willie "



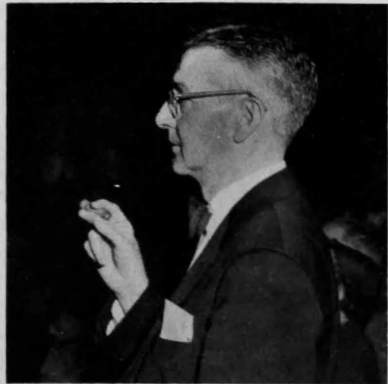
Ludy is the C Club's " Man-of-The-Year "



ry king: Durwood Foster



A great tribute



The producer: Bill Macomber



Toastmaster MacPherson



Teammate Vale



On behalf of the women — Miss Fife

* The bananas on the table in front of Hilda Fife were a surprise presentation to Bill and were accompanied by this account from Galen Eustis:

"Four of his classmates have written me about how Bill obtained the nickname 'Bananas.' It appears that in 1922 Colby had a football coach by the name of Win Snow. All the players were on strict training. One day at noon Bill was discovered eating a very tempting banana split—definitely against the rules. That afternoon, just before practice the entire squad was assembled and the coach presented to Bill, in the words of his teammates, 'a luscious—very large—banana split, piled high with an assortment of flavors covered with strawberries, chocolate sauce, cherries, maple syrup, cream and nuts.' Bill was forced to eat the whole batch and then play fullback in a rough, tough scrimmage."

Alumni Are Mobilizing

ALUMNI throughout the East are hearing in a series of meetings addressed by President Bixler, how Colby's "Program of Fulfillment" will give the college the tools necessary for it to "continue its advance into the very front rank of colleges of its type."

Many alumni, recognizing the important part they must play in this program, both in giving and soliciting funds, have asked "where does the Alumni Fund fit into the campaign?"

The answer to this question contains four points of emphasis, as follows:

1. The Alumni Fund will be merged with the Fulfillment Fund for three years, the period in which most Fulfillment Fund pledges will be paid.
2. The Fulfillment Fund will call for much larger pledges than those normally given to the Alumni Fund, since this is primarily a campaign for capital funds. It includes, however, a sum sufficient to meet on-going expenses for three years to take the place of annual giving.
3. Every payment to the Fulfillment Fund will be credited to

the Alumni Fund on Alumni Fund records. This assures recognition of continuity of giving.

4. Alumni making pledges to the Fulfillment Fund will not be solicited for annual gifts to the Alumni Fund during the period they are making payments on their pledges.

The Fulfillment Fund will, of course, seek gifts from many other sources. Friends of Colby, including parents of present and former students, foundations and business corporations will be asked for support. It is a proven fact in college campaigns, however, that the amount of money given by outside sources is largely determined by the response of alumni to an appeal from their alma mater. Evidence of loyalty and interest on the part of alumni provides the most effective argument for those interested in supporting higher education.

In an effort to bring Colby's story to alumni in face-to-face talks, the campaign has been organized on a regional basis, with Class Agents being asked to lend a helping hand not only in their

own areas, but in stimulating maximum giving among all of their classmates.

Regional chairmen have been appointed in 35 key areas of the country, and for the past few months they have been busy developing local committees to ask for advance gifts from those known to be able to contribute substantial amounts. In some areas this work is already under way. President Bixler soon will complete a long trip through the East in order to tell alumni groups the story of Colby's progress. Bill Millett has been with him at most places, when he could be spared from his work of perfecting the alumni organization.

The general solicitation of alumni will start in April, 1958. There will be simultaneous "opening dinners" in focal points throughout the country, with an address by Dr. Bixler being carried to all meetings, and illustrated by slides shown at each dinner.

The college is rightfully counting on its alumni to blaze the Fulfillment Fund trail in carrying the Colby story to the world. And fortunate indeed are we to have the demonstrated and dedicated leadership of our own Leonard Mayo and the enthusiastic support of an inspiring Board of Trustees.

*L. Russell Blanchard, 1938
Chairman, Alumni Committee*

National Science Foundation Grant Supports Summer Institute for Teachers

A GRANT of \$45,800 from the National Science Foundation (Washington, D. C.) has been awarded the college for a six weeks Summer Institute for High School Teachers of Science and Mathematics.

The announcement in November was greeted with enthusiasm by state and local authorities. Governor Edmund S. Muskie congratulated the college for "another example of progressive and alert leadership" adding, "The mobilization of our scientific resources at all

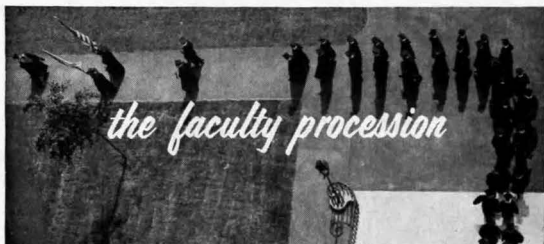
levels requires our serious attention and thought."

Other statements came from Dr. Warren G. Hill, Maine's Commissioner of Education, and Waterville Mayor Clinton A. Clauson who commented on Colby's "reputation for meeting community needs" and on the "already extensive summer program offered by the college."

The institute will be limited to 45 high school teachers each of whom will be awarded a weekly stipend to cover

expenses. The program will cover the areas of biology, chemistry, mathematics, and physics. It will be taught by members of the Colby science faculty and by visiting members from education, industry, and medicine.

Dr. Evans B. Reid, chairman of the department of chemistry, who came to Colby in 1954 from the faculty of The Johns Hopkins University, will direct the institute. He is chairman of the Maine Section, American Chemical Society.



by Professor Richard Cary

WHEELS OVER EUROPE

IGNORING Horace Greeley's century-old admonition to "Go west, young man," three of our young men headed due east to Europe this summer for abbreviated *wanderjahre*.

Dr. Bixler sailed from Montreal on June 14, landed at Le Havre, and proceeded to Paris for several days of opera and ballet. Thereon to Cologne for visits with old Harvard colleagues at the university, and to pick up a pert Volkswagen (not a dachshund, he insists) which he drove for the balance of his vacation. To Freiburg in Baden for the 500th anniversary of the founding of the university, where Dr. Bixler served as delegate for the Carl Schurz Foundation. Followed three weeks at Hergeswil on Lake Lucerne, which was used as a base for numerous side excursions into the Swiss Alps. At Berne, Dr. Bixler met and was so impressed with Dr. Michael Stettler that he induced the renowned archaeologist and Director of Berne Historical Museum to lecture at Colby next spring. At Altdorf, the homeplace of William Tell, Dr. Bixler took in the traditional play about the arrow and apple performed by the villagers; at Blonay above Lake Geneva he visited Dr. and Mrs. Wilhelm Bitter, whose son and daughter attended Colby; and at Lausanne he saw another Colby alumnus, Professor Robert S. Anthony of the Harvard Graduate School of Business Administration (see "The President's Page"). A final foray into French Riviera (see "TPP" again), where Dr. Bixler renewed acquaintance with Henry Steele Commager, the prominent historian; a quick review of the cathedrals at Orleans, Chartres and Rouen, then back on board at Le Havre. Not until it came time to debark at Quebec on August 14 did it occur to him that he had forgotten the carrying case for his faithful Volkswagen.

Associate Professor Henry Holland (Mod. Lang.) did most of his junketing over Spain, France, Italy, Yugoslavia and Austria in a sleek, petite Citroen (which is now undergoing survival training on the highroads of Maine). Prof. Holland devoted six weeks in Spain to auld lang syne activities around the University of Madrid, where he attained his doctorate, and to sporadic raids on *Librerias de antiguedades* for hard-to-obtain materials on the novelist Perez de Galdos. Thereafter he spent three weeks shuttling through

the customs lines of the four other countries without once being charged with international intrigue. He recalls Yugoslavia most vividly for two reasons: 1) Gasoline was cheap; 2) One night in Opatija he was unceremoniously ousted from his hotel to make room for visiting panjandrum Ho Chi Minh.

Assistant Professor Clifford J. Berschneider (History) inserted six weeks of European jaunting between two sessions of shipboard education. Sailing from New York on the Greek Line as a representative of the Council on Student Travel, Prof. Berschneider organized forums on European history, Renaissance art, contemporary political problems, Greek architecture, Italian language and a number of other topics that tested his depth and versatility. The interval between trips was spent in France and Italy, principally reviving old friendships around the universities of Perugia and Torino. In Venice he had his pocket picked and in Verona he encountered Prof. Holland (shades of Shakespeare and his *Two Gentlemen of*!). On the voyage back, Prof. Berschneider oriented a boatful of immigrants in the sometimes comprehensible mores of US and Canada.

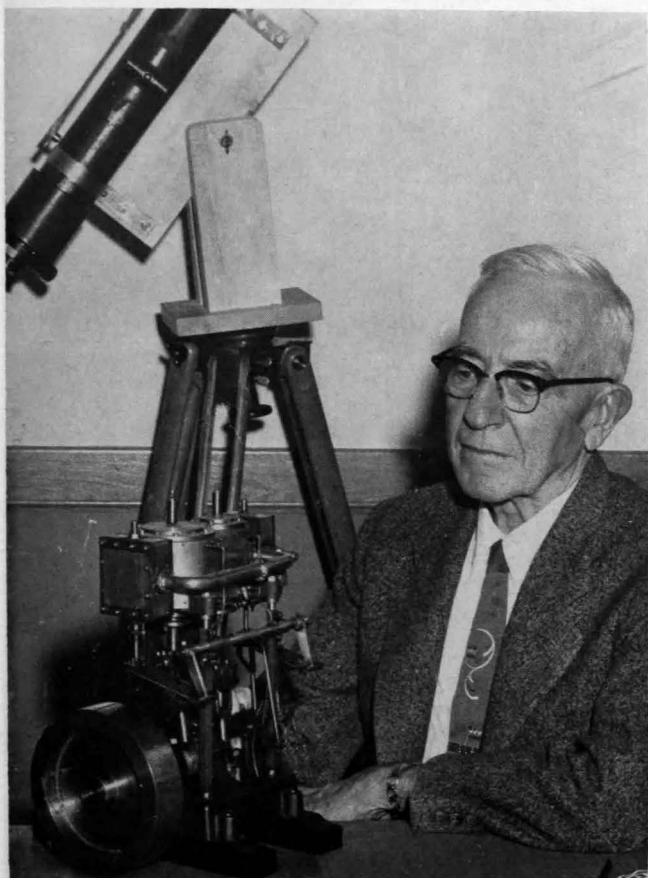
SEVENTH YEAR HITCH

THE COLLEGE sabbatical year, during which a professor is granted freedom from teaching in order to study or travel, derives from the ancient Jewish custom of enriching fields by leaving them untilled every seventh year. Having toiled relentlessly for their quotas of six years, five members of the faculty requested and were given leave to pursue personal projects in their respective fields.

Professor Sherwood F. Brown (Chairman, Physics) will dedicate the entire year to cracking the mystery of the physical and chemical composition of Ming Red glazes, a condition which modern physicists find hard to duplicate and harder to understand. He will conduct research at M. I. T., his alma mater, and in addition assist the dean of of science in an analysis of sophomore physics instruction there.

Absent the first semester is Associate Professor K. Frederick Gillum (History), who is burrowing assiduously into collections of 19th Century political papers in the British Museum. His particular aim is to uncover more than is currently known about the activities and principles of John Clerk Lord Eldin, a brilliant but idiosyncratic Scot lawyer and one-time Solicitor General of Scotland. Prof. Gillum hopes to demonstrate that Lord Eldin, a vituperative antagonist yet sensitive connoisseur of the arts, represents a pure form of Toryism that existed around the time of the Reform Bill of 1832. Prof. Gillum will later take a walking tour of outlying shires in search of local manuscript materials.

At the Folger Library in Washington, D. C., during the first semester Associate Professor R. Mark Benbow (English)



Astro-physicist Julius Brown

investigates the nature of Shakespearean tragedy on a grant-in-aid from that institution. Prof. Benbow is plowing through first folios, MSS and source books available only here, and may proceed to the Sterling Memorial Library at Yale to follow up his findings.

Professor James M. Carpenter (Chairman, Art) will go into seclusion during the second semester to concentrate on completing a book possibly to be entitled *Representation as Form*. The volume concerns itself with the problems of representing nature as it is revealed through visual perception. Prof. Carpenter has long been disturbed by the chasmic separation of theory and practice in the arts and wishes to clarify object-matter from subject-matter in painting and sculpture; in short, to distinguish the objective, sensory qualities of things from their symbolic or connotative implications—a refreshingly commonsensical approach and a relief from the torrent of dada, gaga bleatings about art.

Travelling through France during the second semester will be Associate Professor Archille H. Biron (Mod. Lang.), observing the Bilingual World Association's program of English language study in the French elementary schools and comparing it with our attempts to introduce French into Maine grade schools. Another feature of the Associa-

tion's work which Prof. Biron will scrutinize is that of "twinning," the exchange program of twin cities in France and U. S.

NEW YEAR, NEW FACES

DEAN STRIDER's latest totting of Colby faculty comes to 99, a saltatory number that forecasts a three-figure group in the offing.

Notable among new arrivals is Visiting Professor Julius A. Brown (Physics) who experienced an amusing turnabout when welcomed to Colby by Dr. Bixler—as Dean at the American University of Beirut he had welcomed Dr. Bixler to its faculty some years ago. Prof. Brown holds degrees from Dartmouth and Oxford (Rhodes Scholar), has taught at both schools, at Syrian Protestant College, at Columbia, Colgate, and American University at Cairo. His career also encompasses research in astro-physics at the Yerkes and Mt. Wilson observatories, and extensive assistance to world-wide Red Cross.

Our new Librarian and Associate Professor of Bibliography is John R. McKenna, A. B. Queen's University in Kingston, Ontario, and B. L. S. from McGill University, Montreal. Prof. McKenna sandwiched in a season as gunner for the Royal Canadian Air Force before becoming Reference Assistant at Maine and, most recently, Assistant Librarian at Bowdoin. At Brunswick, he organized and led the Great Books study group for five years. Prof. McKenna comes with a feather in his cap—presidency of the Maine Library Association, to which post he was elected this summer.

Not a new face, but with a new name Mrs. Marjorie Bither resumes as instructor of Physical Education where she left off in 1941. As Marjorie Duffy she had held forth in that position for five years, then married Associate Professor Philip S. Bither (Mod. Lang.), raised a pair of strapping sons, and is now back at the old stand. She studied at Bouve Boston School of Physical Education, received her B. S. from Simmons, and has done graduate work at Teachers' College in Columbia University, New York City.

Nota bene to members of the class of '34: classmate Horace B. Wescott has deserted private law practice to accept an instructorship in the department of Business Administration. He received the L. L. B. at Harvard in 1937, remained an active member of the Maine Bar Association until 1955, then took short turns at Gilchrist's and Jordan Marsh in Boston before gracing a dais on Mayflower Hill.

Charles F. Hickox, Jr., comes as Assistant Professor of Geology with A. B. from Harvard, M. A. Columbia, and M. S. Yale, where he is a candidate for the Ph. D. He has done bedrock research in Nova Scotia, worked in Venezuelan oil fields, led an expedition in Switzerland, and has taught at Norwich and Yale universities.



Football Team Wins Share of State Series Championship

COLBY has produced its finest football season in a decade. Three wins and three losses plus a third interest in the Maine State Intercollegiate football crown were the spoils, but these indicate only a portion of the success.

The State Series was tinglingly close. A single point stopped Colby from winning the title outright; and a like situation prevented Bates from repeating its championship. The White Mules gave exciting, all-out performances weekend after weekend. No team defeated Colby by more than a touchdown. Here are the scores: Brandeis 14, Colby 6; Williams 26, Colby 19; Colby 6, Springfield 0; Colby-Trinity (cancelled); Colby 16, Bowdoin 13; Maine 14, Colby 13; Colby 20, Bates 19.

Coach Bob Clifford set the stage for the season's results with a prediction early in September.

"We must improve defensively at least fifty percent if we expect to better our '56 record," he told his squad of 34 players.

Under Clifford's direction and the able tutoring of line-coach John Coons, the team did just that.

A statistical comparison between '56 and '57 is convincing evidence of the quality of the job this fall. Net yards gained by rushing by opponents a year ago were 1573; this year, 906. In passing it was 755 yards in 1956 and 11 touchdowns through the air. This season opponents gained only 433 by aeriels and five TDs. Total offense by opponents was 2328 in 1956. In 1957 this figure melted to 1339. Thirty-three touchdowns last year went for 217 points. The most recent edition of the Mules permitted 13 for 86 points.

Co-captains Don Crowley (halfback) and Bill Orne (guard) kept spirit at a peak. There was never a let-down, and for many players it was sixty minutes under fire each Saturday.

In every game except Brandeis, Colby scored the first time it had possession of the ball.

Tom Connors, center, and Bob Auriemma, All-Maine halfback, are co-captains-elect. They will have help from a veteran squad which loses only four men plus manpower from an undefeated freshman team.

Colby dropped its opener to Brandeis giving up two quick touchdowns on

passes. George Roden, sophomore scamperer, went over for Colby on a 36 yard burst which was a tantalizing sample of what can be expected another year. The speedster, named All-Maine, was injured a good portion of this season, but despite it he boasted the best offensive mark among Maine college runners with 325 yards in 37 plays for an 8.8 average.

And speaking of statistics, quarterback Mark Brown, whose fakes and deception were professional, won the unofficial Maine passing crown for the second consecutive year, completing 17 out of 42 for a .404 percentage and 303 yards.

One of the top efforts of the campaign was against Williams, considered the best small college club in the east. The Ephmen were fortunate to escape with a 26-19 victory. It took a last period drive of 72 yards to do it. Moving into the final quarter the game was tied 19-19. Roden and Al Rogan had scored on runs of 35 and 45 yards for Colby after Auriemma, a heroic competitor and savage runner, had hit for Colby's first TD 1:14 minutes after the opening kickoff.

Old-fashioned on-the-ground football produced a 6-0 win over Springfield the following week. Auriemma went over in the first quarter climaxing a 44 yard march. The feature, however, was the alert defense, led by another All-Maine selection, sophomore guard Jim Redmond, that stopped Les Plumb, who, at the time, was the leading passer in the east. Plumb threw 13 tosses without one completion.

Flu at Trinity cancelled the next game and a similar situation at Williams also gave Bowdoin a week's rest to prepare for the State Series curtain-raiser. A sixteen yard field goal by big Bob Sargent, with four minutes to go, was the margin of Colby's 16-13 win over the Polar Bears. Bowdoin was fired up for this thriller; so were the Mules. It was a see-saw affair with Colby going ahead 13-0 on a Brown-to Bob Bruce pass and a plunge by Auriemma. The Polar Bears roared back and put on a brilliant defensive stand which was hurdled only by Sargent's pin-point boot.

Against Maine, Coach Clifford again had his team "up." The University took advantage of penalties and a fumble to score and collected both extra points for a 14-13 victory. Crowley and Mike Farren tallied for Colby, but the final attempted placement failed and the miss proved to be the point that eventually sent the championship into a three way deadlock between Colby, Bates, and Maine.

Bates was spotted two touchdowns before Colby roared back to win the season's spectacular, 20-19. Sargent again connected on a crucial kick to put the Mules in front 20-19. It was a contest of bone-crushing tackles, magnificent running, and great line play. Farren scored at 3:06. Bates' All-Maine halfback John Makowsky produced three quick touchdowns before Colby could again cross into pay territory. The Mules second TD was a dazzling 39 yard run by Rogan. The winning effort was from 5 yards out by Felix Suchecki.

Coach John Winkin's freshmen sailed through the season undefeated having a comparatively easy time against Brewster Academy, 41-7, Hebron Academy, 50-0, and Maine Central Institute, 20-6. The University of Maine gave the most trouble forcing the Mules to settle for a 6-6 tie. Winkin and his coaching assistant Jack Kelley had to do some sharp juggling on this one as the flu cut cruelly into the squad.

Comparisons are often deceiving. It is worth noting, however, in attempting to evaluate the strength of the freshmen, that MCI stopped Bowdoin 13-6 and Maine 38-7.

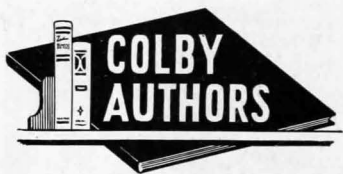
The varsity basketball schedule: Dec. 4, Bates (home); 7, Boston College (home); 10, University of Maine (away); 12, Bowdoin College (home); 14, Brown University (away); 16, Dartmouth College (home); 27, Loyola University (away); 28, University of Akron (away); 31, Seton Hall University (away); Jan. 4, University of Massachusetts (away); 8 Bates College (away); 10, Amherst College (home);

11, Williams College (home); 15, University of Maine (home); 17, Bowdoin College (away); 31, Trinity College (away); Feb. 1, Springfield College (away); 5, Brandeis University (home); 15, Quantico Marines (home); 19, Bowdoin College (home); 21, Northeastern University (away); 22, Boston University (away); 26, University of Maine (away); 28, Bates College (home).

The varsity hockey schedule: Dec. 6, Hamilton College (home); 7, Dartmouth College (home); 11, Bowdoin College (away); 14, Tufts College (home); Jan. 3, Williams College (home); 4, Norwich University, (home); 10, Massachusetts Institute of Technology (away); 11, Amherst College (away); 17, University of New Hampshire (home); 31, University of Massachusetts (away); Feb. 1, United States Military Academy (away); 7, Middlebury College (away); 8, Norwich University (away); 15, Northeastern University (home); 19, University of New Hampshire (away); 22, Massachusetts Institute of Technology (home); 26, Bowdoin College (home).



CAPTAINS — *The Honorable F. Harold Dubord, 1914, speaker at last year's winter sports banquet, wishes good luck to the trio of seniors who will be leading Colby's teams this winter. Left to right, Doug Miller, skiing; Howie Cates, hockey; and Larry Cudmore, basketball.*



Robert E. L. Strider, dean of the faculty, reviews *The Radical Novel in the United States, 1900-1954* by Walter Rideout, 1938. Professor Rideout's book received the Robert Ferguson Prize from the Chicago Friends of Literature for "an outstanding creative work published in 1956 by a Chicago area author." He has been awarded a Guggenheim Fellowship to work on a critical biography of Sherwood Anderson which he will begin next year.

WALTER B. RIDEOUT, Colby 1938, a member of the English Department at Northwestern University, has performed a valuable service both to literary criticism and to modern social history in *The Radical Novel in the United States, 1900-1954* (Harvard University Press, 1956). His evaluation of the rise and decline of this controversial literary genre is informative in content and often distinguished in execution.

Mr. Rideout is careful to define his terms. Early in the volume he judiciously isolates the radical novel as "one which demonstrates, either explicitly or implicitly, that its author objects to the human suffering imposed by some socioeconomic system and advocates that the system be fundamentally changed." Such a rigid definition excludes from detailed analysis a considerable body of socially conscious twentieth-century American fiction that reveals radical tendencies—some of the works, for example, of Hemingway, Steinbeck, Dos Passos, and Faulkner. Yet, much as one would have enjoyed seeing these works subjected to Mr. Rideout's talented critical scrutiny, one can see that his policy of exclusion made it possible for him to achieve a more concentrated aim: to

trace the genuinely radical political movements of our century in terms of the art that they fostered, and to determine the legitimacy and integrity of an art form conceived in this fashion.

Reading in Mr. Rideout's book is reliving a part of the past that our somewhat hysterical attitude toward radicalism, which has proved so profitable a political expedient on the national scene in the past decade, has impelled us to sweep under the rug. It is an experience that also brings to light a good deal of our recent past that we knew very little about at the time. We recall, of course, the Sacco-Vanzetti case, we remember that there was once a flourishing periodical called *The New Masses*, we are aware of the social novels of Jack London, Upton Sinclair, James T. Farrell; but few of us know much about the era of the John Reed Clubs or the turbulent rise of the I. W. W., and even fewer are aware of the existence of novelists like I. K. Friedman or Robert Cantwell. It is important that this era and these products of it should be chronicled, for whether we now like it or not they are part of our heritage.

Mr. Rideout's book is, however, more than a chronicle. Though it is the content of the novels he studies that principally determines their relevance to his purpose, the author is sensitive to their form as art, and he is adept at illuminating those works in which, as he puts it, "image and idea coexist," as well as at criticizing those that fail. His analysis of Henry Roth's *Call It Sleep* (1935) is both critically incisive and persuasively moving, and it should send more than one reader to the library shelves to find this little-known relic of a decade when art was regarded by some of its practitioners as a "class weapon." Mr. Rideout is remarkably successful in seeing a pattern among the hundreds of proletarian novels that he has patiently worked his way through (many of them evidently pretty tedious), as well as in relating



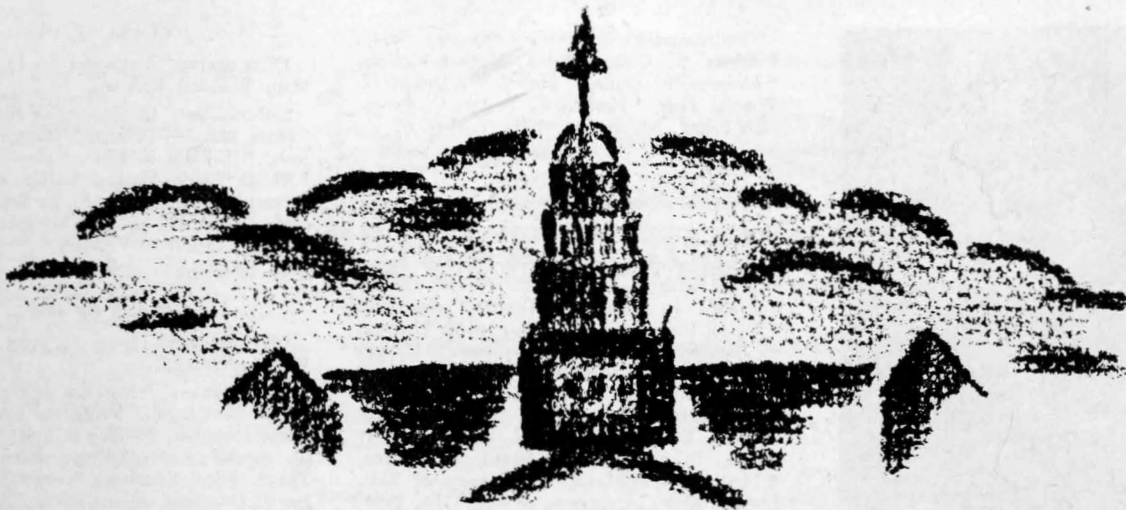
John J. Pullen, 1935, has written the life story of the 20th Maine Regiment which J. B. Lippincott Company published in September. Entitled "*The Twentieth Maine: A Volunteer Regiment in the Civil War*," the volume has earned the high praise of Pulitzer Prize winner Bruce Catton and of many of the nation's book reviewers. The winter *Alumnus* will review the book.

Mr. Pullen pursued his research from Maine attics to the National Archives in Washington, resulting in many diaries and other original sources which illuminate the official records on which the account is based.

This is Mr. Pullen's first book. He is associated with the Philadelphia office of N. W. Ayer & Son, Inc., advertising agency.

these novels constantly to a purposeful organizational scheme. And even though the radical novel as it flourished in the thirties has, for reasons which the author convincingly traces, fallen on evil days, Mr. Rideout brings the discussion down to the very recent past with pertinent comments on such figures as Norman Mailer, Nelson Algren, and Howard Fast.

Since this is a book that someone had to write eventually, it is fortunate that the someone proved to have the sound scholarship, restrained objectivity, and literary competence of Walter Rideout.



News of classmates and of

Colby's Greatest Alumni Fund

Contributions to the 1956-57 Alumni Fund hit an all-time high of \$51,684 from 3,293 individuals. Once again the loyalty of Colby men and women has been impressively demonstrated. In the lists that follow contributors marked with an asterik have a record of continuous giving to the fund. Names appearing in italic indicate the alumnus is deceased.

CLASS OF 1877

Contributors: In memory of Louise Helen Coburn.

CLASS OF 1882

Class agent: Robie G. Frye.
Contributors: * Robie G. Frye.

1 Member 1 Contributor 100%

CLASS OF 1883

Class agent: Samuel B. Shepard

CLASS OF 1884

Contributors: In memory of John E. Cummings, In memory of Frank B. Hubbard.

CLASS OF 1885

Contributors: In memory of Bertha L. Soule.

CLASS OF 1886

Contributors: In memory of George P. Phenix.

CLASS OF 1888

Class agent, Albert F. Drummond.
Contributors: * William M. Cole, * Albert

F. Drummond, Walter D. Stewart.

4 Members 3 Contributors 75%

CLASS OF 1889

Contributors: * Minnie Bunker, In memory of Harriet M. Parmenter, In memory of Edward F. Stevens.

2 Members 3 Contributors 150%

CLASS OF 1890

Class agent: Charles W. Spencer.
Contributors: * Charles W. Spencer.

5 Members 1 Contributor 20%

CLASS OF 1891

Contributors: * Effie Dascombe Adams, In memory of Franklin W. Johnson, * Mary Morrill Ilsley, In memory of Melvin M. Smith.

4 Members 4 Contributors 100%

CLASS OF 1892

President Eisenhower sent a telegram to *Frank B. Nichols* on the occasion of his 60th anniversary as owner of the *Bath Daily Times*. Unfortunately Mr. Nichols was not at his desk to receive it,

for he was in a hospital recuperating from a cataract operation. President Eisenhower told Mr. Nichols, "Your leadership has brought strength to your community in the finest tradition of America's free press."

Class agents: Frank B. Nichols and R. Adelle Gilpatrick.

Contributors: * R. Adelle Gilpatrick, * Frank B. Nichols, * Stephen Stark, In memory of Herbert E. Wadsworth.

4 Members 4 Contributors 100%

CLASS OF 1893

Class agent: Albert Robinson.

Contributors: * Denis E. Bowman, In memory of Leon O. Glover, In memory of William E. Lombard, * Evangeline Taylor MacKenzie, * Robert N. Millett, * Lucia H. Morrill, * Albert Robinson, In memory of George Otis Smith, In memory of Grace Coburn Smith, In memory of John F. Wood.

7 Members 10 Contributors 142%

CLASS OF 1894

Class agent: Melville C. Freeman.
Contributors: In memory of Annie Rich-

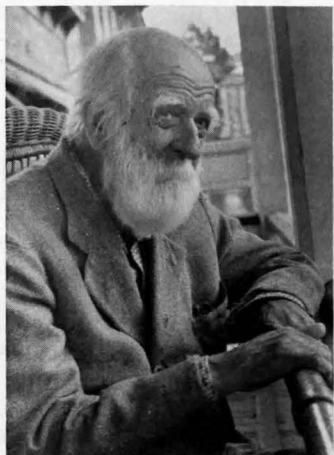


Photo by Jack Quinn

A feature story in the Portland Press Herald last August focused attention on Freeland Howe, 1894, of Norway, Maine. The article said in part, "That the horse and buggy days are over is only too obvious to 88 year old Freeland Howe. As Howe puts it, 'A horse on Main Street today would cause as big a stir as that first auto 50 years ago."

"A constant part of the Main Street picture in his wicker chair on the Hotel Stone veranda . . . Howe has been watching the local scene from the hotel since he snapped his hip bone five years ago. But the only horses he has seen in months have been the ones that ride by on their way to a new logging operation or to a sulky track."

"And you know," he says, "I kinda miss those horses. They smelled a heck of a lot sweeter than these gas burners."

ardson Barnes, *Melville C. Freeman, *Clara P. Morrill, *Frances H. Morrill, *Grace M. Reed, Clarence E. Tupper, *William B. Tuthill.

13 Members 7 Contributors 53%

CLASS OF 1895

Contributors: *Emma A. Fountain, Reed V. Jewett, In memory of Archer Jordan, *M. Blanche Lane.

6 Members 4 Contributors 66 2/3%

CLASS OF 1896

Class agents: H. Warren Foss, and Florence E. Dunn.

Contributors: *Myrtice Cheney Berry, *Albert S. Cole, *Edna Moffatt Collins, *Florence E. Dunn, *Henry W. Dunn, H. Warren Foss, *Herbert E. Foster, C. Benjamin Fuller, *Christine Miller Tooker.

15 Members 9 Contributors 60%

CLASS OF 1897

Class agent: Grace Gatchell.

Contributors: *Alice Nye Fite, In memory of Edith Hanson Gale, *Minnie Corson Garland, In memory of Grace Gatchell, *Helen Hanscom Hill, *Harriet F. Holmes, In memory of William H. Holmes, *Marion Parker Hubbard, In memory of Elmira Nelson Jones, *Albert R. Keith, *Lena Tozier Kenrick, *Edith M. Larabee, *Tena P. McCallum, Florence L. Morrill, Minnie Gallert Mayer, In memory of Edward S. Osborne, *Herbert S. Philbrick, In memory of Ruth Stevens Reed, In memory of Charles A. Sturtevant, *Fannie Parker Wing, In memory of Arthur G. Wright.

19 Members 21 Contributors 110%

CLASS OF 1898

It is reported with deep regret that Margaret MacKenzie Pierce, the wife of T. Raymond Pierce, died in Laconia (N. H.) Hospital, August 1. The Pierces were married in 1913 and for the past 40 years have had a summer home on Lake Winnepesaukee. Mrs. Pierce was active in the administration of the Winnepesaukee Camp Meeting Association for many years.

Class agents: T. Raymond Pierce and Lenora Bessey.

Contributors: *Lenora Bessey, *Fred G. Gatchell, Mabel Humphrey Hall, Everett C. Herrick, *Arad E. Linscott, In memory of John E. Nelson, Arthur H. Page, *T. Raymond Pierce, *Fred P. H. Pike, Frank A. Robinson, *Mary Evans Stephenson, *Ina Taylor Stinneford, *Charles W. Vigue.

22 Members 12 Contributors 54%

CLASS OF 1899

Class agent: Ambrose B. Warren.

Contributors: *Edith Corson Bowman, *Jennie M. Buck, *Harold L. Hanson, *Ernest H. Maling, *Maude Hoxie Martin, *Etta Purington Parsons, *Charles E. G. Shannon, *Henry R. Spencer, *Helene Bowman Thompson, William L. Waldron, In memory of Ambrose B. Warren, *Rachel Foster Whitman, Mary L. Wilbur.

24 Members 13 Contributors 54%

CLASS OF 1900

Class agents: Dr. & Mrs. Charles F. Towne and Ethel M. Russell.

Contributors: *Louise M. Benson, *Mary Philbrook Dunning, Simon P. Hedman, *Stella Jones Hill, *Grace B. Holden, *Mary Lemont Ingraham, *Fred F. Lawrence, Nella M. Merrick, *Ethel M. Russell, *Charles F. Towne, *Gertrude Pike Towne, Ernest H. Tupper, Lu Ames Ventres.

17 Members 13 Contributors 76%

CLASS OF 1901

Class agents: Alexander M. Blackburn, and Mary Blaisdell Belknap.

Contributors: In memory of Elvin L. Allen, *Mary Blaisdell Belknap, *Grace Farrar Linscott, *William F. Hale, *George A. Marsh, *Rhena Clark Marsh, Ralph W. Richards, In memory of Charles F. T. Seaverns, *Lucinda Peacock Smith, Margaret Williams Thomas, Ernest E. Ventres.

19 Members 11 Contributors 58%

CLASS OF 1902

Class agents: Harry E. Pratt, and Edith Williams Small.

Contributors: *Florence Wilkins Bragdon, *Lew C. Church, *Augusta Colby, *Edna Owen Douglass, *Grace Bicknell Eisenwinter, In memory of William Farwell, Bertha Thayer Flint, Elizabeth Penney Floyd, *Angier L. Goodwin, Allana Small Krieger, *Vera Nash Locke, *Blanche Pratt Pratt, *Harry E. Pratt, *Nellie Lovering Rockwood, *Edith Williams Small, *Marjorie Elder Stevenson, *Linwood L. Workman.

26 Members 17 Contributors 65%

CLASS OF 1903

Class agent: Allison M. Watts.

Contributors: Harold C. Arey, *Grace Warren Atchley, *Florence Dixon, Mildred Jenks Dudley, *Walter L. Glover, Florence Perry Hahn, *Martha B. Hopkins, *Caleb A. Lewis, In memory of Alice Pierce Norris, In memory of Eva Johnson Patten, Elydia Foss Shipman, Lois Hoxie Smith, E. May Tolman, *Allison M. Watts.

23 Members 14 Contributors 61%

CLASS OF 1904

Allen Clark and his wife celebrated their 50th wedding anniversary Sept. 4 by holding an open house at their home in Farmingdale. Allen has retired from the Gardiner post office after 26 years as a rural mail carrier.

Class agents: Carl R. Bryant and Edith Watkins Chester.

Contributors: *Eva Clement Ames, In memory of Vernon S. Ames, *Eunice Mower Beale, *Carl R. Bryant, Mary Caswell Carter, *Edith Watkins Chester, Allen Clark, *Jennie M. Cochrane, William A. Cowing, *Ruby Carver Emerson, Louis A. Hammond, *Bertha Long Hanscom, Mary Berry Manter, *Harriet Cleveland Nason, Alice Owen Palmer, *John A. Partridge, In memory of Carroll N. Perkins, Arthur G. Smith, *Edward B. Winslow, Frank E. Wood.

30 Members 20 Contributors 66 2/3%

CLASS OF 1905

Class agents: Cecil W. Clark and Mr. & Mrs. Stephen G. Bean.

Contributors: *David K. Arey, *Alona Nicholson Bean, *Stephen G. Bean, *Cecil W. Clark, *Arthur L. Field, *Eleanor Stone Goodwin, *William Hoyt, *Henry N. Jones, Ida Phoebe Keen, *Hersey R. Keene, *Rose Richardson Kelley, Thomas T. Knowles, *Effie Lowe Patch, In memory of John B. Pugsley, Glenn W. Starkey, In memory of Carrie Allen Wood.

28 Members 16 Contributors 57%

Robie G. Frye '82
 Albert F. Drummond '88
 Albert Robinson '93
 Edna Moffatt Collins '96
 Florence E. Dunn '96
 Henry W. Dunn '96
 Albert R. Keith '97
 Minnie Gallert Mayer '97
 Fred G. Getchell '98
 T. Raymond Pierce '98
 Ernest H. Maling '99
 Etta Purington Parsons '99
 Henry R. Spencer '99
 Ethel M. Russell '00
 Charles F. Towne '00
 Ruby Carver Emerson '04
 David K. Arey '05
 Anna M. Boynton '06
 Karl R. Kennison '06
 Elaine Wilson Oxnard '06
 W. H. S. Stevens '06
 Alma Morrisette McPartland '07
 Ellen J. Peterson '07
 In memory of
 Oscar B. Peterson '07
 by his sister, Ellen J. Peterson
 Harold N. Mitchell '08
 Blanche Emory Folsom '09
 Thomas J. Seaton '09
 Frederick T. Hill '10
 John A. Tidd '10
 Ralph E. Nash '11
 Nathan R. Patterson '11
 Margaret Buswell Nash '12
 Anonymous '13
 John H. Foster '13
 † Philip W. Hussey '13
 Frank S. Carpenter '14
 Helen Thomas Foster '14
 Lois Peacock Warren '14
 Milroy Warren '14
 Ralph A. Bramhall '15
 Leonard W. Grant '15
 Albert R. Willard '15
 Leon D. Herring '16
 Lewis Lester Levine '16
 Eleanor Bradlee Mitchell '16
 Edward D. Cawley '17
 Myrtle Aldrich Gibbs '17



All contributors whose gifts equalled or exceeded \$100 have been enrolled as members of the Touchdown club.

Francis E. Heath '17
 Selma Koehler '17
 Frederick A. Pottle '17
 † Mark R. Thompson '17
 Daniel B. Whipple '17
 Carleton M. Bailey '18
 Warren S. Churchill '18
 George E. Ferrell '18
 Howard F. Hill '18
 Charles H. Piebes '18
 Newton L. Nourse '19
 John W. Stinson '19
 Raymond O. Brinkman '20
 Robert E. Wilkins '20
 Paul H. Bailey '21
 Stanley R. Black '21
 A. Edward Brudno '21
 D. Ray Holt '21
 Hazel Peck Holt '21
 Neil Leonard '21
 Lewis Levine '21
 William J. Pollock '21
 Ransom Pratt '21
 Libby Pulsifer '21
 Reginald H. Sturtevant '21
 Asa C. Adams '22
 Vina Parent Adams '22
 Leslie H. Cook '22
 Catherine D. Larrabee '22
 Leonard W. Mayo '22
 Edna Chamberlain Nelson '22
 J. Russel Coulter '23
 Elizabeth B. Larrabee '23
 Joseph C. Smith '24
 Theodore R. Hodgkins '25
 Ellsworth W. Millett '25
 William F. Powers '25
 Arthur O. Rosenthal '25
 George B. Barnes '26
 In memory of
 Francis F. Bartlett '26
 by Ruth K. Bartlett
 Samuel R. Feldman '26
 Hilda M. Fife '26
 James H. Halpin '26
 Harry B. Thomas '26
 Percy Levine '27
 Albert U. Peacock '27
 A. A. D' Amico '28
 E. Richard Drummond '28
 Albert J. Thiel '28
 Murray B. Miller '29
 Donald B. Tupper '29
 Barbara Libby Tozier '30
 Thelma Chase Bevin '31
 Gordon K. Fuller '31
 George H. Sterns '31
 Doris Spencer Wallis '31
 William H. Caddoo '32
 James E. Fell '32
 † Nissie Grossman '32
 Harold F. Lemoine '32
 Alex Lindholm '32
 Dorsa Rattenbury O'Dell '32
 Howard E. Watson '33
 R. Leon Williams '33
 E. William Huckle '34
 John B. Ward '35

First National Bank of New York in recognition of George R. Berry '36
 John P. Roderick '36
 Edmund L. Bernard '37
 † Morton M. Goldfine '37
 Robert N. Anthony '38
 L. Russell Blanchard '38
 Henry Kammandel '38
 † Edward S. Boulos, Jr. '39
 Robert V. Candors '39
 Wilson C. Piper '39
 Earl L. Wade '39
 Maynard Levin '40
 Saul Millstein '42
 Muriel Carrell Philson '42
 Eugene C. Struckhoff '44
 Ray B. Greene, Jr., '47
 Gerald Stoll '49
 Edward Lampert '50
 In memory of
 John E. Thompson '51
 by Mr. & Mrs. Laurel W. Thompson
 Frederick W. LeVeque '51
 Barbara Guernsey '54
 In memory of
 Michael Lunder
 by Peter Lunder '56
 In memory of
 George G. Averill
 by Mrs. Averill
 Mrs. George G. Averill
 Dr. J. Seelye Bixler
 Mrs. J. Seelye Bixler
 Frederic E. Camp
 Howard Crosby
 Angelo Diversi
 Exerene L. Flood
 William Ghirardini
 Warren E. Kershner
 Harry Kisloff
 Mrs. Harry Kisloff
 Martin M. Landay
 John H. McGowan
 Sumner T. Pike
 Arthur W. Proetz
 William B. Skelton
 Arthur H. Sulzberger
 Robert E. Wilson
 Mrs. Mary Curtis Zimbalist
 † Corporate Scholarship

CLASS OF 1906

Class agents: Arthur G. Robinson, and Anna M. Boynton.

Contributors: * Adelbert Bowdoin, * Anna M. Boynton, Cornelia B. Caldwell, Edwin P. Craig, Rex W. Dodge, * Karl R. Kennison, Elliott C. Lincoln, * Ella E. Maxcy, * Charles N. Meader, * Elaine Wilson Oxnard, Clara Norton Paul, * Beulah F. Purington, * Ralph L. Reynolds, * Arthur G. Robinson, Cora Farwell Sherwood, William H. S. Stevens, Joseph U. Teague, Harold E. Willey, * Susan H.

Weston, Christia Donnell Young, * Nettie Fuller Young.

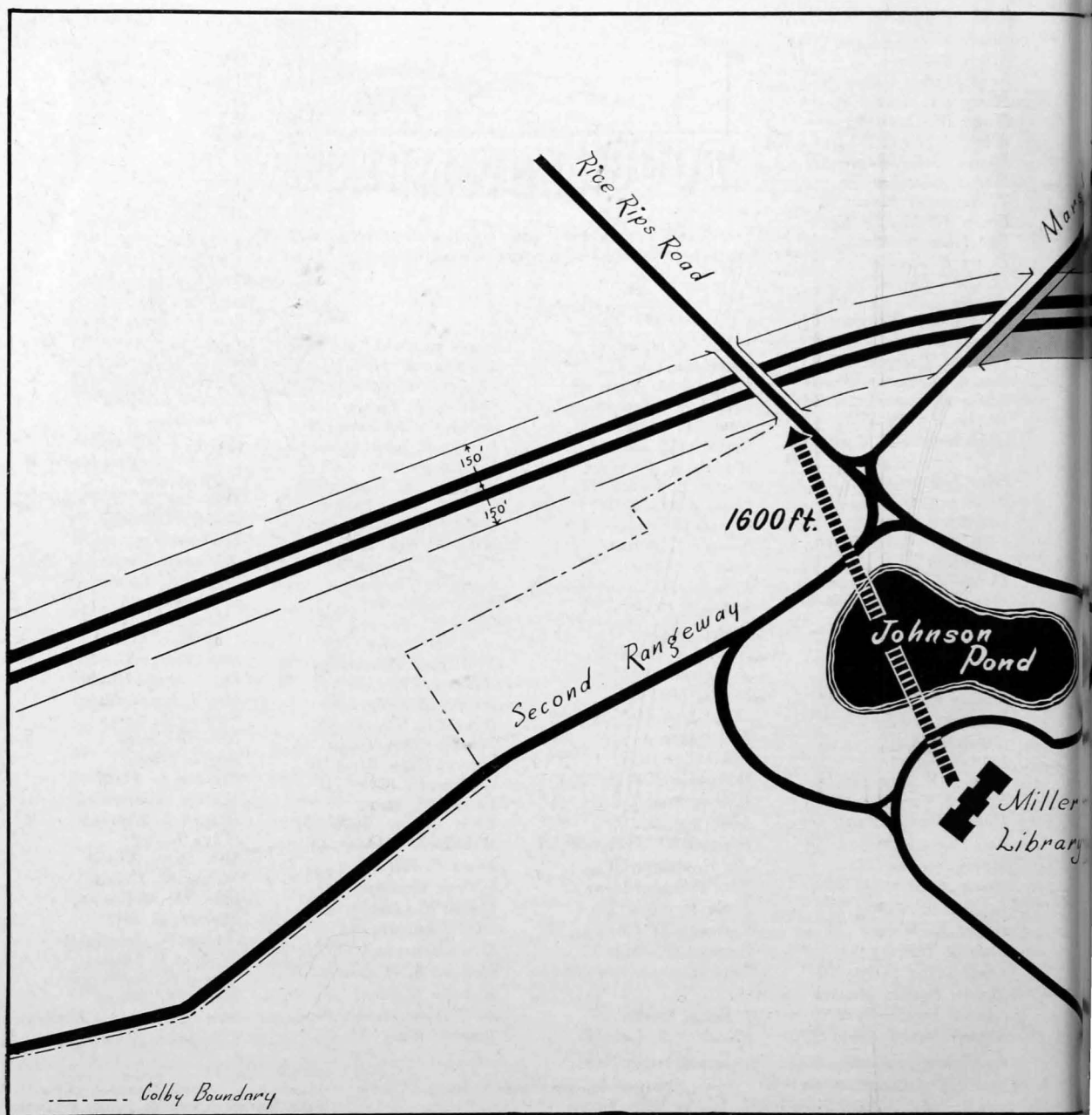
31 Members 21 Contributors 68%

CLASS OF 1907

Class agents: Millard C. Moore, and Ellen J. Peterson.

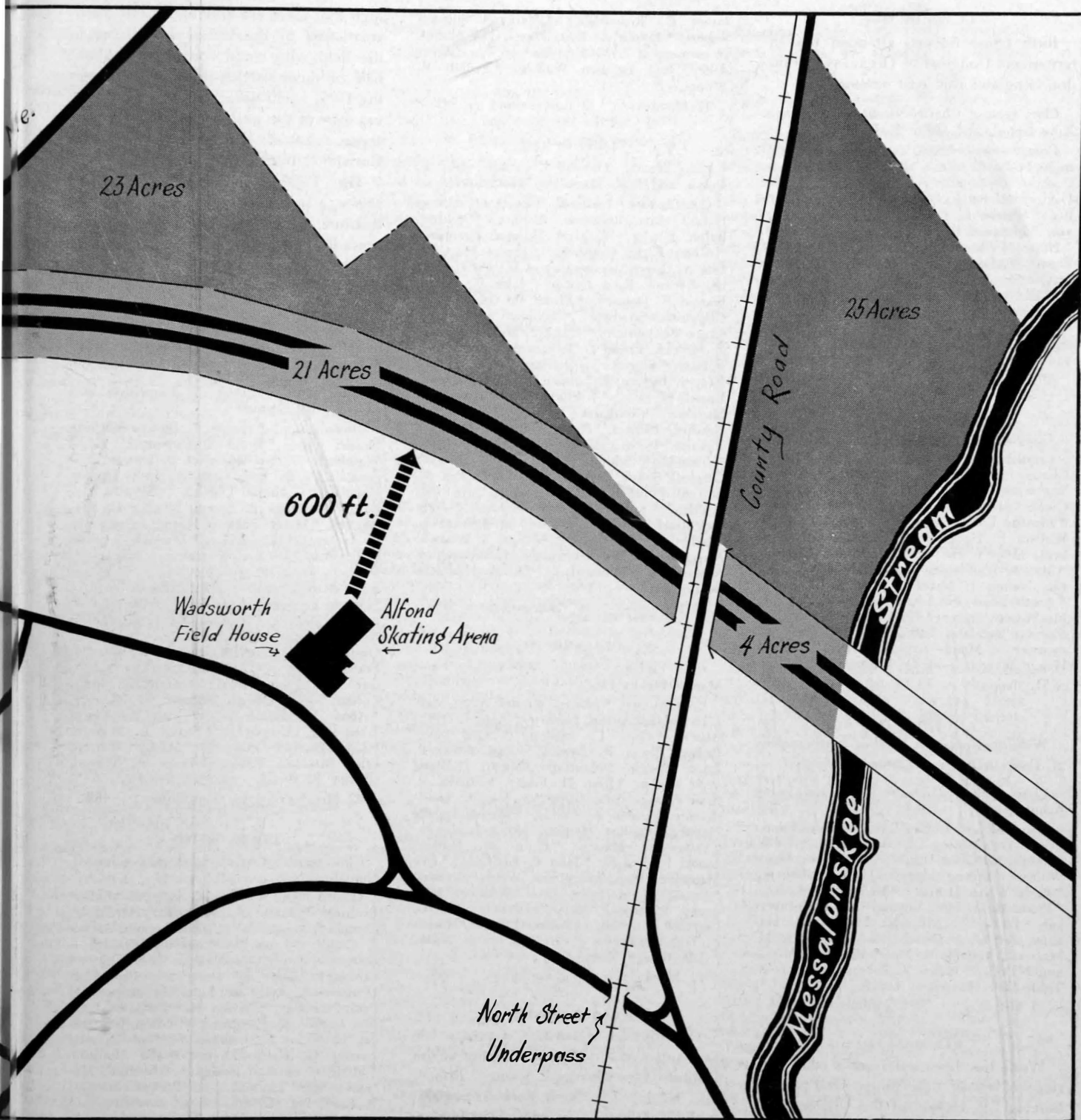
Contributors: In memory of Myron Berry, In memory of Adelaide Holway Brown, Sarah S. Cummings, In memory of Lewis W. Dunn, Roscoe C. Emery, Caro Beverage Faulkner,

Blanche Emory Folsom, In memory of Burr F. Jones, Rayford C. Lidstone, * Alma Morrisette McPartland, * Marian Learned Meader, Alice Tyler Milner, * Millard C. Moore, Ray Morse, Bertha E. Nead, * Ellen J. Peterson, In memory of Oscar B. Peterson, * Nellie Winslow Rideout, Charles A. Rush, * Arthur W. Stetson, Lubelle Hall Teague, * Perley L. Thorne, In memory of Elihu B. Tilton, In memory of Edith Priest Whitten, Bertha Robinson Wheeler, In memory of Arthur K. Winslow.
 26 Members 26 Contributors 100%



The Highway Cometh

THIS section of the new Interstate Highway will start at the end of the Maine Turnpike at Augusta and will end at Benton. In the Waterville area, it will have a traffic interchange on the Oakland Road, just east of the



Second Rangeway, and will swing back of Johnson Pond through campus property to the rear of the Veterans Apartments and the Alfond Arena. The route will continue across the County Road and Messalonskee Stream

northwest of Thayer Hospital and to an interchange on Upper Main Street just southeast of Ridge Road.

As shown above, the highway and its right-of-way will consume approximately 25 acres of Colby land and will

separate from the main campus another 48 acres.

The Maine State Highway Commission has indicated that it will be two years to three years before the entire route is open for traffic.

CLASS OF 1908

Ruth Olive Roberts attended the International Congress of Organists at London, England this past summer.

Class agents: Charles W. Bradlee, Florence King Gould, and Helen F. Dickinson.

Contributors: *Charles W. Bradlee, Emmons P. Burrill, Lena May Clark, *Helen L. Cochran, Winfred F. Curtis, Myrta Little Davies, *Helen F. Dickinson, Philip H. Dunbar, *Charles C. Dwyer, Caroline Noyes Ervin, *Florence King Gould, John E. Hatch, *Nina Holmes Herschleb, In memory of Ernest W. Loane, Frank W. Lovett, *I. Ross McCombe, *Harold N. Mitchell, James R. Nickels, *Mollie Pearce Putnam, *Ninetta M. Runnals, *Helen Campbell Shaw, Suzanne Corbett Steele, In memory of Mary Abbott Stobie, *Agnes Walker Taylor, Ragnhild Iverson Tompkins, Howard A. Tribou.

49 Members 26 Contributors 53%

CLASS OF 1909

Class agent: Thomas J. Seaton.

Contributors: *Helen E. Adams, *Joseph Chandler, *Clark D. Chapman, Jeannette Sturtevant Crowell, *Clara A. Eastman, Olive Green Fairclough, Bertha Bryant Farwell, *Blanche Emory Folsom, Leon S. Gilpatrick, Wallace E. Hackett, Inez Stevenson Hallenbeck, Myra I. Hardy, *Harold W. Kimball, *Marion Wadsworth Long, Edwin W. Merrill, Nelson I. Mixer, *Thomas J. Seaton, *Austin Shaw, Ethel Knowlton Siedhof, *Ella MacBurnie Stacy, *Pearl Davis Steffenson, Florence Freeland Totman, Leo S. Trask, In memory of Maude Eaton Wadleigh, *Abbie Hague Warren, John D. Whittier.

51 Members 26 Contributors 51%

CLASS OF 1910

William Ramsden teaches mathematics at Traip Academy, Kittery.

Class agents: Ralph N. Good, and Leona Achorn Gillis.

Contributors: *Mary Donald Deans, Emma Berry Delahanty, *Leona Achorn Gillis, *Ralph N. Good, Chester A. Grant, Grace Whittier Greene, Jennie Grindle Grindle, *Ruth Wood Hebner, *J. Pauline Herring, *Frederick T. Hill, Verena Chaney Hornberger, *Lillian L. D. Lowell, *Thomas L. Mahany, *Eleanor Creech Marriner, John M. Maxwell, *Henry B. Moor, Elizabeth Monohon Nickels, *Helen V. Robinson, *John A. Tidd, Alice Henderson Wood.

35 Members 20 Contributors 57%

CLASS OF 1911

Word has been received of the marriage of Hazel Cole Shupp to Professor Percival W. Hutson of the University of Pittsburgh.

Class agents: Horace M. Pullen, and Rose Carver Tilley.

Contributors: *Albion W. Blake, Inez Mace Bridges, Raymond C. Bridges, Margaret Hare Buck, Ray Cecil Carter, Helen Warren Cummings, Robert L. Ervin, *Isaac Higginbotham, *Rose Pillsbury LeBlanc, *Ralph E. Nash, Ellen Cratty Paine, *Nathan R. Patterson, Ellen M. Pillsbury, Horace M. Pullen,

James C. Richardson, *Margaret Fielden Rogers, *Louise A. Ross, Hazel Cole Shupp, In memory of Edward G. Stacy, *Rose Carver Tilley, Eva LaCasce Walker, *Reulah E. Withec.

41 Members 22 Contributors 54%

CLASS OF 1912

Class agents: Thomas S. Grindle, John P. Dolan, and Ruth Hamilton Whittemore.

Contributors: Leslie B. Arey, Pearl Mitton Eishop, Rita Robinson Blodget, *Mildred Ralph Bowler, Margaret Skinner Burnham, *Albert E. C. Carpenter, *Ernest H. Cole, Etta A. Creech, In memory of Harold L. Curtis, *Jennie Reed Dixon, *John P. Dolan, Harold E. Donnell, *Elmer D. Gibbs, Ethel Gilpatrick Goodwin, *Thomas S. Grindle, Grace Vose Grupe, *Ethel V. Haines, Samuel A. Herrick, Ernest D. Jackman, *Sarah Snow Jellison, *Florence Carll Jones, Laurel Wyman Keppel, Eugene P. Lander, Maurice E. Lord, Russell H. Lord, *J. Elliott May, *Jessie Ross Murchie, *Margaret Buswell Nash, Elsie Gardiner Pierson, Leora E. Prentiss, Merle C. Rideout, In memory of Walter J. Rideout, Lillian Carl Schubert, Carl R. Smith, Laura Getchell Smith, *Freda A. Snow, Ethel M. Stevens, James B. Thompson, Bess Cummings Walden, *Emma Leighton Walden, *Mary Strickland Ward, In memory of Edward E. Washburn, In memory of William A. Weeden, Marguerite Record Whitehouse, In memory of Alpheus L. Whittemore, *Ruth Hamilton Whittemore.

80 Members 46 Contributors 56%

CLASS OF 1913

Class agents: Philip W. Hussey, and Marian Ingalls Hague.

Contributors: *Mathea Windell Allen, Margaret Adams Austin, Genevieve Barker, David Baum, *Clair F. Benson, *Dora Libby Bishop, Elmer R. Bowker, Crary Brownell, Lucy Clough, Robert F. Fernald, *Diana Wall Fogler, *John H. Foster, *Phyllis St. Clair Fraser, Victor Gilpatrick, John C. Goldthwaite, Royden K. Greely, *Marian Ingalls Hague, *Pauline Hanson, James L. Howe, *Elmer H. Hussey, *Philip W. Hussey, Lionel F. Jealous, *John P. Kennedy, *Eva Macomber Kyes, Marguerite Webber Lander, *Ernest C. Marriner, Clara Winslow Moldenke, *Mercoe F. Morse, Melvin P. Roberts, Clarence A. Small, *Chester C. Soule, Marion E. Tebbets, Robert R. Webber, Iva B. Willis, *Ada Waugh Young.

71 Members 35 Contributors 49%

CLASS OF 1914

Dr. Marston Morse was chairman last September of a two week meeting at the Institute for Advanced Science, Princeton, N. J. The *New York Times* described it as "a scientific conference that is expected to affect the course of mathematical research for the next decade." The subject was the field of analytic functions, one of the branches of pure mathematics and one that has led to many important applications affecting aerodynamic design and electronics. The scientific level of the conference was so

high that there are only about 120 mathematicians in the world specializing in the field who could contribute. About half of them participated, coming from the U. S. and 12 other nations representing most of the western world, India, and Japan. Soviet Union and other Iron Curtain countries were not invited.

The *Times* went on to say, "Dr. Morse, a professor of mathematics at the Institute, is regarded as one of the nation's leading mathematicians. He is one of the few Americans to have been elected a correspondent of the Academie des Sciences of France. During World War II he played an important role in defining the optimum use of the proximity fuse."

Class agents: Frank S. Carpenter, and Lillian Fogg Randall.

Contributors: *Joseph P. Burke, Marjorie Meader Burns, *Frank S. Carpenter, *Edith Washburn Clifford, Madeline E. Clough, Eugene K. Currie, Lena Cushing, Annie Dudley Douglas, *F. Harold Dubord, *Idella K. Farnum, *Emmons B. Farrar, Blanche C. Farrington, *Helen Thomas Foster, In memory of Arthur D. Gillingham, *Marjorie Scribner Holt, Adelaide Klein Jackman, Roscoe E. Johnson, Frank H. Jones, Aubra S. MacDougal, *Mabel Bynon McDaniel, In memory of Norman J. Merrill, *Stanley B. Miller, *Wilmer A. Mooers, *Marston Morse, George C. Newton, Emily Hanson Obeare, Robert E. Owen, Gladys Paul, *George W. Perry, *J. Franklin Pineo, *Clara Collins Piper, Christine Whittemore Powers, George W. Pratt, Lillian Fogg Randall, Thomas J. Reynolds, *Abbie G. Sanderson, William A. Tracy, *Harry E. Umphrey, *Ernest L. Warren, *Lois Peacock Warren, *Milroy Warren, Ethel Merriam Weeks, *Louis A. Wilson, Chester F. Wood.

92 Members 44 Contributors 48%

CLASS OF 1915

Class agents: Carl B. Lord, and Aldine C. Gilman.

Contributors: *Florian G. Arey, E. Mildred Bedford, *Ralph A. Bramhall, Harold S. Campbell, Marguerite M. Chamberlain, Arthur J. Cratty, *Leon W. Crockett, Thomas J. Crossman, Emily Cunningham, Ruth Whitman Cushing, Robert R. Decormier, Prince A. Drummond, Avery M. Fides, In memory of Paul F. Fraser, *Vivian M. Ellsworth, *Aldine C. Gilman, *Leonard W. Grant, In memory of Helen N. Hanson, Mildred Holmes, Everett G. Holt, Dorothy Webb Houston, *Merle F. Hunt, *Roland B. Hutchins, Marion Steward LaCasce, John R. LaFleur, Carl B. Lord, Ina M. McCausland, In memory of Murray A. Morgan, Ruth Morgan, *Leslie F. Murch, Hazel Ross Pomroy, Ruth Brickett Rideout, Ethel Chamberlain Roberts, Marguerite Robinson, Ray D. Robinson, May Sargent, Merle Bowler Stetson, *Raymond R. Thompson, *A. Ruth Trefethen, Myrtle Everett Waite, Lizzie Howland Waldron, *Mary A. Washburn, Lester F. Weeks, Evelyn S. Whitney, Albert R. Willard, Earl M. Woodward, Ray C. Young.

93 Members 47 Contributors 51%

CLASS OF 1916

Class agents: Frank C. Foster, Edith Pratt Brown, and Ella Robinson Hoyt.

Contributors: Alden W. Allen, Hubert H. Barker, * Elizabeth Hodgkins Bowen, * Edith Pratt Brown, John A. Campbell, * Marion Miller Chase, Alice A. Clarkin, * Carroll E. Dobbin, * Franklin M. Dyer, Henry A. Eaton, Frank C. Foster, Effie Hanna Fraser, * Arthur E. Gregory, Marion Harmon, John N. Harriman, * Samuel J. Hartley, Marjorie Barker Henderson, * Leon D. Herring, * Vivian Skinner Hill, * Ella Robinson Hoyt, Robert A. Hussey, * Cyril M. Joly, Ralph W. King, * Hazel N. Lane, * Lewis Lester Levine, Norman W. Lindsay, Louise McCurdy MacKinnon, Peter J. Mayers, Ervin M. Miller, * Eleanor Bradlee Mitchell, Lucy Montgomery Newell, Malcolm B. O'Brien, * Donald E. Putnam, John M. Richardson, Edith C. Robinson, William C. Schuster, Lois Osgood Skillin, * Byron H. Smith, Everett P. Smith, * Esther French Spaulding, Scott D. Staples, In memory of Harold B. Taft, Lyman Thayer, * Carolyn Stevens Thompson, Frances E. Trefethen.

99 Members 45 Contributors 46%

Scrapbook Memories



CLASS OF 1917

Class agents: Edward C. Cawley, Francis E. Heath, and Selma Koehler.

Contributors: * Lucy M. Allen, * Mildred Greeley Arnold, * Harriet Canham Alley, Harold S. Brown, * Hazel Robinson Burbank, * Edward D. Cawley, Eva M. Bean, Elmer W. Campbell, * Helen D. Cole, * Flora Norton Dexter, Catherine Clarkin Dundas, Foster Eaton, * John F. Everett, Grace A. Farnum, * Donald B. Flood, Mildred Barton Flood, * Hazel M. Gibbs, Myrtle Aldrich Gibbs, Gertrude Donnelly Gonya, * Harold E. Hall, * William M. Harriman, Madelyn Daggett Haskell, * Francis E. Heath, Thomas F. Joyce, * Leonora A. Knight, * Selma Koehler, * Elsie M. Lane, * C. Wallace Lawrence, * Andrew C. Little, Thorvald B. Madsen, Evie Leonard Miller, Lillian Tuttle Morse, Attalena Atkins Mower, Floy Strout Murray, Phoebe Vincent Parker, * Frederick A. Pottle, * Lucy Taylor Pratt, Charles B. Price, E. Donald Record, A. Raymond Rogers, * Cecil A. Rollins, * Irma M. Ross, * Hazel Durgin Sandberg, * Leonard A. Shea, * Marion White Smith, * Ralph N. Smith, Susie Smith Smith, Vivien Small Sullivan, Ruth Murdock Thayer, * Donald W. Tozier, Anne F. Treworgy, In memory of George E. Watson, * Nathaniel Weg, Daniel B. Whipple, * Paul G. Whittemore, * Mildred Greene Wilbur, * Oliver C. Wilbur, Winifred

Atwood Wilbur, * Grace Fletcher Willey, * Lester E. Young.

95 Members 60 Contributors 63%

CLASS OF 1918

Word has been received of the death of *Everett Linwood Caswell* who attended Colby from 1914-1916. He had lived in Middleboro, Mass. . . *Winifred Greeley* is librarian for Suffield (Conn.) High School.

Class agents: Carleton M. Bailey, Howard G. Boardman, Alberta Shepherd Marsh, and Helene B. Buker.

Contributors: Mary Jordan Alden, Paul E. Alden, Carleton M. Bailey, Hazel E. Barney, * Merrill A. Bigelow, Marian Lewis Blackman, In memory of Carleton M. Bliss, * Howard G. Boardman, Helen Kimball Brown, * Helene B. Buker, Warren S. Churchill, * Phyllis F. Cole, Violet French Collins, Alta E. Davis, Forence Eaton Davis, In memory of Henry L. Eddy, Elizabeth R. Fernald, * George E. Ferrell, Robert H. Gallier, * Norma H. Goodhue, Doris Andrews Goodrich, Winifred B. Greeley, Jennie Sanborn Hasty, * Margaret Wilkins Hickman, * Howard F. Hill, Ralph R. Howes, * Marion Horne Hunt, Frederick K. Hussey, Mollie Treat King, * Alberta Shepherd Marsh, Harris B. McIntyre, Harvard E. Moor, Kathryne Sturtevant Moore, In memory of Herbert Lee Newman, * Alfred H. Patterson, Charles H. Piebes, * Marion Starbird Pottle, In memory of Henry B. Pratt, Jr., * Dorothy I. Roberts, * Hugh L. Robinson, * Violet Shaw Scott, Margaret Perkins Seller, * Hazel Whitney Snowe, In memory of John A. Stowell, Pauline Windsberg Thall, * Paul A. Thompson, * Leila M. Washburn, * Lucile Rice Wheeler, * Raymond C. Whitney, Daisy Murray Wilson, * Elwood A. Wyman.

93 Members 51 Contributors 55%

CLASS OF 1919

Class agents: Burton E. Small, and Phyllis Sturdivant Sweetser.

Contributors: John D. Anthony, * Willard B. Arnold, Gertrude Allison Bennett, In memory of Joseph A. Bessee, In memory of George N. Bourque, Katharine Hatch Burrison, Lillian Pike Chick, James B. Conlon, E. Reginald Craig, Ira E. Creelman, * Mildred Dunham Crosby, Marion Griffin Demuth, * Mira L. Dolley, * Ralph H. Drew, Wentworth V. Driscoll, Edward C. Dunbar, Elizabeth R. Eames, In memory of Herbert H. Fletcher, Helen Baldwin Gates, Miriam Adams Harmon, Lincoln Heyes, * Helene Blackwell Humphrey, * George E. Ingersoll, * Hildegard Drummond Leonard, Isaac D. Love, * Everett S. Marshall, * Raymond H. Merrill, Beatrice Bowler Nelson, Marion Campbell Newton, * Newton L. Nourse, * Mary Ann Foss Ogden, * Alice Barbour Otis, * Matilda Titcomb Pavey, Harriet Eaton Rogers, * Emily Kelley Russell, * Martha Gregory Shibles, * Burton E. Small, Nellie Davis Spiller, * John W. Stinson, * Robert E. Sullivan, * Julius G. Sussman, Galen F. Sweet, * Phyllis Sturdivant Sweetser, *Mary A. Titcomb*, * Vernon H. Tooker, * Sidney P. Wyman.

85 Members 46 Contributors 54%

CLASS OF 1920

Rhoden Eddy has been appointed superintendent of schools in Saugus, Mass.

Class agents: Phinehas P. Barnes, and Stella Greenlaw Thompson.

Contributors: * Phinehas P. Barnes, * Pauline Higbinbotham Blair, * Raymond O. Brinkman, * John W. Brush, Eleanor L. Burdick, * Elliott E. Buse, Rudolph E. Castelli, John F. Choate, Ula Orr Clark, Lillian Dyer Cornish, Daniel M. Crook, * Alice Bishop Drew, Rhoden B. Eddy, Anna McLaughlin Fallon, Raymond L. Giroux, Mabel McCausland Grant, * Merrill S. F. Greene, Myron C. Hamer, * Ralph K. Harley, Donald G. Jacobs, M. Lucile Kidder, Raymond S. Owen, Robert F. Lord, * Ernest L. McCormack, Rafael J. Miranda, Gladys Chase Nixon, William R. Pederson, * Retta Carter Pinchbeck, Esther M. Power, Alfreda Bowie Rand, * Elsie McCausland Rich, * Carl W. Robinson, Everett A. Rockwell, George R. Skillin, * Hugh A. Smith, * Clarence A. Tash, Lucy O. Teague, * Stella Greenlaw Thompson, Daniel P. Tozier, Earle S. Tyler, * H. Thomas Urie, * Robert E. Wilkins, Ruth E. Wills, * Marion Waterman Wood, Madge Tooker Young.

87 Members 44 Contributors 50%

CLASS OF 1921

Clark Drummond has established his own real estate business in Scituate, Mass.

Class agents: William E. Burgess, Ransom Pratt, William J. Pollock, and Marion L. Conant.

Contributors: Alice Clark Anderson, * Thelma French Arnold, * Stephen H. Ayer, Paul H. Bailey, * Laura V. Baker, Helen Hodgkins Berry, * Stanley R. Black, * Arthur J. Brimstine, Paul L. Brooks, * Alice LaRoque Brown, * Chauncey L. Brown, * A. Edward Brudno, William E. Burgess, * Elizabeth Whipple Butler, Dorothy Knapp Child, * Marion L. Conant, George A. Costley, Clark Drummond, William C. Dudley, * Bernard E. Esters, Smith Dunnack, * Grace R. Foster, Charles G. Gately, * Adelle McLoon Germano, * Grace Johnson Grant, * Everett H. Gross, Merle Davis Hamilton, In memory of William P. Hancock, Geraldine Baker Hannay, Arthur A. Hebert, Charles R. Hersum, Frank J. Hois, * D. Ray Holt, * Hazel Peck Holt, In memory of Hugh Kelly, * Neil Leonard, * Lewis Levine, Nathan N. Lowell, Harley P. Mairs, * Bernice Butler McGorill, * Wayne W. McNally, * Philip H. Merchant, Arthur R. Mills, * Isabel Genthner Misto, * Irene Gushee Moran, Esther Blanchard Nicoll, * William J. Pollock, * Frederick J. Pope, * Ransom Pratt, * Libby Pulsifer, * Mary M. Rice, * Ashton F. Richardson, John Riker, Malvena Masse Robbins, Dorothy Rounds, In memory of Harold M. Sachs, * Vernon G. Smith, * Raymond Spinney, * Reginald H. Sturtevant, * Joel E. Taylor, * Elva C. Tooker, * Catherine A. Tuttle, * Milford I. Umphrey, Roland G. Ware, * Clara Carter Weber, * Samuel Wolman, Clara Gamage Woodbury.

107 Members 67 Contributors 63%

CLASS OF 1922

William F. Cushman, vice president of the American Foreign Insurance Associa-

tion, has recently celebrated his 35th anniversary with that organization. Since he embarked on his career in 1922 he has travelled extensively. He supervises the foreign administration of the association's operations throughout the world.

Class agents: Leslie H. Cook, and Bertha Gilliatt Moore.

Contributors: *Asa C. Adams, *Vina Parent Adams, Eleanor C. Bailey, Raymond J. Bates, *Marguerite Craig Beach, Virginia M. Bean, Walter D. Berry, Ashley L. Bickmore, Avis Harton Bixby, In memory of Raymond H. Blades, *Julia Hoyt Brakewood, George W. Brier, *Mary Brier, Walter G. Chamberlin, Leslie H. Cook, *Dorothy M. Crawford, *Elizabeth Dyar Downs, Kenneth C. Dubbeare, Bernice Strout Fortier, Charles H. Gale, *Edwin W. Gates, Ruth Goodwin, Ruth Banghart Greenleaf, Miriam Hardy, Robert M. Jackson, Dorothy White Lamoreau, *Catherine D. Larrabee, *Merle F. Lowery, Annie Burgess Lumsden, *Helen Raymond Macomber, *Arthur B. Malone, *Leonard W. Mayo, Bertha Gilliatt Moore, Walter T. Moreland, Edna Briggs Morrell, *Edna Chamberlain Nelson, *Irwin S. Newbury, *Charles J. Paddock, Daphne Fish Plummer, *Clyde E. Russell, Lorena E. Scott, *Evan J. Shearman, Robert L. Stone, *Arthur J. Sullivan, M. Anne Sweeney, Annie Choate Sweet, Mary Carl Taylor, *Henry D. Teague, *Hazel Dyer Town, Gladys Briggs Walker, William J. Wallace, Mary I. Whitcomb, Hugh C. Whittemore, In memory of Elmer Leslie Williams, Mildred Inmiley Wing.

95 Members 55 Contributors 58%

CLASS OF 1923

Thelma Powers Walker and her husband celebrated their 25th wedding anniversary in July and were given a surprise party by 50 neighbors and friends. Mr. Walker is principal of Plant Junior High School, West Hartford, Conn. . . . Leonette Warburton Wishard is teaching at Pierce College, Athens, Greece. Mrs. Wishard, with her late husband, was a prisoner of the Japanese for three and a half years at Santa Thomas in the Philippines. . . . Dr. J. Leslie Dunstan, professor of comparative religion and missions, Andover Newton Theological School, has been named interim preacher at the Newton Highlands (Mass.) Congregational Church.

Class agents: A. Galen Eustis, Arthur L. Berry, J. Leslie Dunstan, and Gertrude Fletcher Lowery.

Contributors: Casper J. Azzara, Reta Wheaton Belyea, *Arthur L. Berry, *Frederick D. Blanchard, In memory of Ralph C. Bradley, *Arlene Ringrose Brown, *Thomas A. Callaghan, *Elliot F. Chase, Mildred R. Collins, J. Russel Coulter, Elizabeth Kellett Craven, *Helen Williams Cushman, Helen L. Davis, *Lucy Osgood Dean, Eleanor Hawes Dempsey, Edythe Porter Dunstan, J. Leslie Dunstan, Marcia Davis Esters, Stanley G.

Estes, *A. Galen Eustis, A. Chandler Farley, *Marlin D. Farnum, *Melva Mann Farnum, Frederick G. Fassett, Norman W. Foran, *Edward R. Frude, *John R. Gow, *Wendell F. Grant, Gertrude Weller Harrington, E. Stanley Kitchin, *Elizabeth B. Larrabee, Lillian Cyr LaVerdiere, Merton E. Laverty, *Gertrude Fletcher Lowery, Marguerite Starbird Lunt, Clarence R. Lyond, *Eleanor Wilkins McCarthy, Helen Dresser McDonald, Velma Briggs Moores, Avis Newman Norwood, *George J. Odom, *Roland N. Pooler, Marian Drisko Powers, *Harland R. Ratcliffe, *Forest M. Royal, *Ida Jones Smith, Louise L. Steele, Louise K. Tilley, *John P. Tilton, Marion Bibber Wade, Thelma Powers Walker, *Mary E. Warren, *Ernest R. Wermie, Beulah Adams Williams, Leonette Warburton Wishard.

119 Members 55 Contributors 46%

CLASS OF 1924

Everett C. Marston was honored last spring with a dinner in recognition of his 30th anniversary of teaching at Northeastern University where he is a professor in the English department. . . . Albert Seamans, who retired in June from the Brookline (Mass.) school system, has been appointed resident counselor at Myles Standish Hall at Boston University. Charles S. Lewis is head of the science department at Roslindale (Mass.) High School.

Class agents: Mr. & Mrs. Joseph C. Smith.

Contributors: *Percy G. Beatty, John L. Berry, *Martha Marden Briggs, William Block, *Theodore C. Bramhall, George M. Davis, Ethel Reed Day, Sue R. Daye, In memory of Anna C. Erickson, *Mary Watson Flanders, Celia Clary Fossett, Paul W. Gates, Dorothy M. Gordon, *Harry J. Greene, Grace Fox Herrick, Doris Cole Hunter, *Robert L. Jacobs, Cranston H. Jordan, *Louis Langman, *Charles S. Lewis, *William J. McDonald, *Ralph D. McLeary, Marion Cummings Mann, *Lena Cooley Mayo, Joseph W. McGarry, J. Harland Morse, Marion Brown Newcomb, George T. Nickerson, Ruth Allen Peabody, Frank R. Porter, Anne Brownstone Pritsky, Lawrence A. Putnam, *Noel J. Raymond, Percy L. Rideout, Richard C. Sackett, *Albert H. Scott, *Evangeline York Scott, *Ervena Goodale Smith, *Joseph C. Smith, *Arthur H. Snow, *Ronald W. Sturtevant, Ralph Talberth, Cecilia Simpson Thyng, *Marion Drisko Tucker, Gren E. Vale, Merle Rokes Waltz, Mildred Todd Weir, *Fred M. Weiss, James A. Wilson.

114 Members 49 Contributors 43%

CLASS OF 1925

Edward Merrill has been appointed director of social studies for the Brookline (Mass.) public schools. This position carries responsibility from the high school down through the elementary schools. He is also continuing to teach at the high school where he has been on the faculty since 1930. Ed recently received the Horace Kidger Award of the

Scrapbook Memories



New England Association of Social Studies Teachers awarded for "noteworthy contributions in the teaching of social studies and for writing or research." He is co-author of several history books. . . . Eleatha Beane Littlefield teaches at Mechanic Falls High School.

Class agents: Clayton W. Johnson, Raymond S. Grant, Nellie Pottle Hankins, and Ethel Childs Storer.

Contributors: Eva L. Alley, Earle S. Anderson, In memory of Coburn H. Ayer, Oscar P. Benn, Carlton E. Bennett, *Mildred E. Briggs, Alfred K. Chapman, C. Barnard Chapman, Elizabeth Kingsley Chapman, H. Forrest Colby, Claire A. Crosby, Amy Robinson Cumming, Lloyd M. Dearborn, John F. Flynn, F. Robert Fransen, *Joseph P. Gorham, *Raymond S. Grant, William W. Hale, *Nellie Pottle Hankins, Flora M. Harriman, Edith Gray Havice, *Doris Hardy Haweci, Robert H. Hawkins, Jr., *Theodore R. Hodgkins, Clayton W. Johnson, Oscar R. Johnson, Grace McDonald Jones, Seymour J. Koff, *Ralph M. Larrabee, Alta Doe Maher, *Hollis W. Manning, Margaret White McGowan, *Edward H. Merrill, Earl L. Meriman, *Ellsworth W. Millett, Alice McDunnald Mills, Donald J. Mills, Rosamond Cummings Morehouse, *Edward T. Moynahan, Elsie Bishop Nichols, *William F. Powers, Doris Tozier Putnam, *Verne E. Reynolds, *Arthur O. Rosenthal, Ruth Fifield Russell, Charles W. Shoemaker, *Russell M. Squire, *Ethel Childs Storer, *Sylvester R. Sullivan, Howard B. Tuggey, Leota Schoff Wadleigh, Ellen Smith Weiblen, Keith B. Weymouth, Carleton F. Wiley, Phyllis Bowman Wiley.

126 Members 55 Contributors 44%

CLASS OF 1926

Donald Freeman is a department chairman at Haverhill (Mass.) High School.

Class agents: Harry B. Thomas, and Pauline Lunn Chamberlin.

Contributors: *George B. Barnes, In memory of Francis F. Bartlett, *Ruby Shuman Berry, Stephen B. Berry, Agnes Osgood Blake, Kenneth W. Bragdon, *Agnes J. Brouder, *Alpha Crosby Brown, *Pauline Lunn Chamberlin, Helen E. Davis, *Donald H. Dunphy, *Paul M. Edmunds, *Samuel R. Feldman, *Hilda M. Fife, Adelaide Gordon Fitts, William M. Ford, Susan McGraw Fortune, Everett A. Fransen, Donald C. Freeman, William

E. Garabedian, Doris Roberts Gates, Clyde E. Getchell, *J. Frank Goodrich, Gabriel R. Guedj, *Emily Heath Hall, *F. Clive Hall, James H. Halpin, George F. Hodgkins, Doris Dewar Hunt, R. Fremont Hunter, Charles O. Ide, E. Evelyn Kellett, Alfred N. Law, *Girlandine Priest Libby, *Carl R. MacPherson, Wilbur B. McAllister, John A. McGowan, *Irma Davis McKechnie, Clarence R. McLaughlin, Harry Muir, Jennie L. Nutter, *Marguerite L. O'Roak, *Carroll S. Parker, Ellis F. Parmenter, Olive Soule Parmenter, Herschel E. Peabody, *Edith Grearson Phelan, *George E. Roach, *Marian B. Rowe, *Doris Garland Russell, Elvira Royle Schaub, *Margaret Smith Shearman, *Nela G. Sawtelle, Abbot E. Smith, *Kenneth J. Smith, James B. Sprague, Roger A. Stinchfield, Claude L. Stinneford, Hope Chase Stinneford, *Harry B. Thomas, *John S. Tibbetts, Carroll D. Tripp, *Albert W. Wasell, Ruth Turner Weymouth, Doris Keay Wood, *Esther E. Wood, Madeline Bickmore Woodworth, *Herbert McC. Wortman, Josie Rich Wright, *Mollie Seltzer Yett.

138 Members 70 Contributors 50%

CLASS OF 1927

Vacation from her teaching at St. Johnsbury (Vt.) Academy, permitted Mabel Root Holmes to return to her 30th reunion. She teaches Latin.

Class agents: Perley C. Fullerton, Greely C. Pierce, Clyde E. Riley, F. Clement Taylor, and Barbara Fife Stearns.

Contributors: Carl A. Anderson, Joseph R. Anderson, Florence Plaisted Ayer, Barbara Whitney Beatty, Dorothy Farnsworth Bragdon, *James C. Brudno, W. Preston Cadwallader, Wenonah Pollard Cadwallader, Bertha L. Cain, John E. Candele, *J. Ardelle Chase, Leola M. Clement, *Kenneth R. Copp, U. Cleal Cowing, Louise Chapman Dibble, Marjorie G. Dunstan, Emily Candage Ellis, Evelyn M. Estey, Ena True Farwell, *Helen Smith Fawcett, Leonard R. Finnemore, Ralph T. Flahive, Erna Wolfe Fullerton, *Perley C. Fullerton, Rose Seltzer Gahan, Elizabeth Watson Gerry, *Dorothy Giddings, *Frances Tweedie Giroux, Dorothy I. Hannaford, James J. Harris, Caroline Rogers Hawkes, *Alan J. Hilton, Mabel Root Holmes, *Herbert C. Jenkins, *C. Evan Johnson, *J. Douglas Johnston, Archer Jordan, Jr., James C. LaGrua, *Percy Levine, Harriet Fletcher Lockwood, *Marguerite Chase Macomber, *William A. Macomber, *Philip S. Metcalf, *Helen C. Mitchell, Marie Holmes Mitchell, George L. Mittelsdorf, Helen Stone Mittelsdorf, Prudie R. Moore, Thomas F. O'Donnell, *Albert U. Peacock, Arline Mann Peakes, *Greely C. Pierce, William E. Pierce, Jr., Ralph F. Prescott, Inez Stevens Ready, Norton Rhoades, Priscilla Russell Richards, *Clyde E. Riley, Arthur G. Sanderson, *Miriam Rice Schulze, Paul Seiderman, Esther Knudsen Shettleworth, *Theodore G. Smart, Grace Heffron Smith, Gwyeth T. Smith, Muriel Thomas Squire, *Richard P. Staunton, Barbara Fife Stearns, *F. Clement Taylor, *Fred L. Turner, *Lura Norcross Turner, Caroline Heald Wallace, Elizabeth Alden Wassell, Faith D. Waterman, Robert M. Waugh, Arthur J. Whelpley, Marion Sprowl Williamson.

156 Members 77 Contributors 49%



Nissie Grossman, '32, was recently honoring contributions to the work of the American Red Cross. Retiring after two years as chairman of the Quincy (Massachusetts) Chapter, Nissie received the Chapter's highest mark of distinction, the Irene Favorite Silver Cup.

CLASS OF 1928

Ava Dodge Barton has been elected principal and teacher of eighth grade of the Upper Elementary School in Wiscasset.

Class agents: E. Richard Drummond, A. Frank Stiegler, Ava Dodge Barton, Amy D. Dearborn, and Margaret Davis Farnham.

Contributors: Irma Sawyer Andrews, Roland B. Andrews, Ralph H. Ayer, Nelson W. Bailey, Ava Dodge Barton, Louise Bauer, *George P. Bernhardt, Rose Black, J. Claude Bouchard, Gladys Bunker Bridges, *Everett O. Champlin, Helen Merrick Chandler, Robert C. Chandler, Ruth Viles Clark, Donald P. Cobb, *Cornelia Adair Cole, Adelaide Coombs, *C. Stanley Corey, *Esther Parker Crosman, *A. A. D'Amico, *Amy D. Dearborn, *E. Richard Drummond, G. Leverett Edgett, Olive Richardson Edgett, *Margaret Davis Farnham, *Edmond F. Fiedler, *Cecil E. Foote, Louis P. Fourcade, Nathaniel M. Gallin, *Lela H. Glidden, Katherine B. Greaney, *Douglas C. Grearson, Elwood J. Hammond, In memory of Theodore E. Hardy, *Dorothy Daggett Johnston, Martin M. Keats, *Walter F. Knofskie, *Arthur B. Levine, *Arthur W. Littlefield, W. Robert Lombard, *J. Lewis Lovett, *P. Kenton MacCubrey, *Albert F. MacDougal, *Claire Richardson MacDougal, *Evelyn Ventres Mariner, Elizabeth Lewis Marsh, *Harriet Towle McCroary, *James T. McCroary, Ruth M. McEvoy, Janet Chase Melanson, Laurice Edes Merriman, *Donald H. Millett, *Edward R. Newhall, Marion Daye O'Donnell, John S. Parker, *Lawrence A. Peakes, Viola M. Philbrook, *Margery M. Pierce, Myra Stone Pruitt, Edna Cohen Rapaport, In memory of John Ricci, Roland M. Robichaud, Cecil H. Rose, Daniel J. Shanahan, Roy V. Shorey, *Alberta VanHorn Shute, Sydney P. Snow, *A. Frank Stiegler, Jr., Ruth Hutchins Stinchfield, *Mary Thayer, *Albert J. Thiel, Grace Morrison Thompson, *Charles E. Towne, *Edna E. Turkington, Ella L. Vinal, *Susie Stevens Watson, *George C. West, Clair E. Wood.

166 Members 78 Contributors 47%

CLASS OF 1929

Mrs. J. Drisko Allen (Alice Paul) teaches math at Lincoln School in Providence. . . Dean Mark Shibles has been

named chairman of the School District Commission which will administer the centralization of school functions among Maine municipalities.

Class agents: Edwin D. Merry, Oscar M. Chute, Mr. & Mrs. Rupert M. Irvine, Charles W. Jordan, Florence Young Bennett, and Barbara Weston Noyes.

Contributors: *Alice Paul Allen, *Grace Stone Allen, *J. Drisko Allen, Muriel Sanborn Armstrong, Helen Leighton Austin, *Everett W. Bell, Florence Young Bennett, *E. Richard Benson, *Neal D. Bousfield, *Joseph B. Campbell, J. Stone Carlson, Murray A. Coker, Oscar M. Chute, Carroll J. Cooke, Sylvia D. Crane, Ola Swift Dacey, Dorothy E. Deeth, Eleanor Lunn Donald, Virginia Dudley Eveland, Elsie Lewis Everest, Harvey G. Fotter, Beatrice Palmer Frederick, Leslie F. George, *G. Cecil Goddard, Vinal G. Good, *Lillian Morse Henry, *Philip R. Higgins, *Martha Holt Hines, Richard P. Hodsdon, Everett H. Holmes, *Eleanor Butler Hutchins, Dorothy Wilson Irvine, Rupert M. Irvine, John D. Jones, Charles W. Jordan, *David F. Kronquist, Dorcas Plaisted Larson, Robert G. LaVigne, *Lowell P. Leland, *F. Elizabeth Libbey, Doris Wyman Lord, Lemuel K. Lord, Elizabeth Marshall Lynn, *Clifford J. McGaughy, Mary Vose McGillicuddy, Ruth Norton McKay, Earle A. McKeen, *Edwin D. Merry, *Ernest E. Miller, Murray B. Miller, John W. Miner, Dorothy L. Morton, Harold R. Moskovit, John T. Nasse, *Barbara Weston Noyes, Warren R. Payson, Robert A. Peterson, *Rosalie Mosher Reynolds, Sophie Reynolds, John R. Richardson, Ruth Plaisted Robinson, Ruth Bartlett Rogers, Sterling C. Ryder, *Robert W. Scott, Mark R. Shibles, *Fred J. Sterns, Allan J. Stinchfield, John D. Swartz, Gordon M. Trim, *Donald B. Tupper, Irene Hersey Tuttle, Frank J. Twadelle, *Bertil A. Uppvall, *John E. Walker, *Jean M. Watson.

182 Members 75 Contributors 41%

CLASS OF 1930

John Florena has been appointed clerk of the Board of Public Welfare and Old Age Assistance in Belmont (Mass.). John has been blind since 1948. In 1952 when he received his degree magna laude in public administration at Boston University at the age of 43, he was the first blind person to graduate from the university.

Wendell Thornton and his wife celebrated their silver wedding anniversary in June. A surprise party was given by 150 friends to extend congratulations. Wendell is starting his third term of superintendent of schools in Avon, Mass.

. . . Karl R. Hines, Jr. has been elected vice president and general manager of Nashua (Canada) Limited, a subsidiary of the Nashua Corp. He has moved from his home in Nashua to Peterborough, Ontario where the plant is located.

Class agents: Robert P. Brown, Ralph L. Goddard, Albert C. Palmer, and Pauline Brill Trafton.

Contributors: Phil F. Allen, Donald E. Allison, Kenneth G. Austin, Pauline Bakeman, * Philip S. Bither, Helen Baker Bosworth, * Forrest M. Batson, In memory of Elizabeth Beckett Bousfield, * Robert P. Brown, Barbara Taylor Cahill, Beatrice Mullen Campbell, Edvia V. Campbell, John A. Chadwick, Linton E. Christie, Helen Paul Clement, In memory of Lawrence D. Cole, Philip Constant, Aaron Cook, * W. Thornton Cowing, Linwood T. Crandall, * James E. Davidson, William B. Downey, Clarence A. Dyer, Millan L. Egert, * Dexter E. Elsemore, * Lucile Whitcomb Elsmore, In memory of Charles M. Giles, Frank Giuffra, Alma E. Glidden, * Ralph L. Goddard, Harold L. Grant, Evelyn L. Grindall, G. Gilbert Henry, * Karl R. Hines, Pauline Morin, Howlett, Ralph B. Hurlburt, Lewis W. Jackins, * Gerald A. Johnson, Michael J. Karter, Mildred Fond Kingsbury, John H. Lee, John K. Livingston, Philip Lloyd-Ely, Robert B. Lunt, Miriam Sanders Marcho, Charles F. Martin, Edgar B. McKay, Wallace W. Meyer, * Mary Rollins Millett, Helen Kimball Mintz, * Albert C. Palmer, * Norman D. Palmer, Ralph A. Pape, * Helen Chase Pardy, Ovid F. Pomerleau, * Deane R. Quinton, Thomas A. Record, Bernard C. Shaw, Margaret Hale Shaw, William H. Stinneford, Mary Petke Summers, * Frances E. Thayer, Ernest J. Theberge, * Barbara Libby Tozier, * Pauline Brill Traf-ton, * Charles W. Weaver, Jr., Malcolm S. Weed, Eleanor Hathaway Williams, * Edith M. Woodward.

156 Members 69 Contributors 44%

CLASS OF 1931

Maxine Foster Foster teaches French and English in Washburn High School. . . John Davidson has been appointed vice president of the Scranton Division of the Pennsylvania Power and Light Co. He has served in a similar position in Harrisburg since 1950 where he was prominent in all phases of community life. . . Carl Bergstrom teaches history at Lynn (Mass.) High School.

Class agents: Roderick E. Farnham, Marvin S. Glazier, Thelma Chase Bevin, Evelyn Haycock Quinton, and Doris Spencer Wallis.

Contributors: Ethel MacDougall Aleman, Willard Alexander, Geo. Allen, * Myrtle Paine Barker, * Thelma Chase Bevin, In memory of John T. Cashen, Edward S. Cobb, Louise Mulligan Collins, * Mary Cadwallader Combellack, Alanson R. Curtis, * Faith Rollins Davidson, * John S. Davidson, Paul L. Davis, Louise Murray Deans, * Wallace A. Donovan, Frances Page Egan, Arthur B. Esty, Arlene Woodman Evans, * Roderick E. Farnham, Helen Ramsey Felt, Howard L. Ferguson, Arthur A. Flewelling, Maxine Foster Foster, Thayer H. French, Dorothy Shippee Friend, Gordon K. Fuller, Alexander R. Gillmor, Hope Pullen Gillmor, * Marvin S. Glazier, In memory of Louise Greason Haley, * Beulah Stiles Harris, * Anne Macomber Holden, Eunice Foye Hutchins, Barbara Gurney Jones, Maurice Krasow, In memory of Herbert H. Levenson, Frances E. Libby, Bernard H. Lipman, * Lucius V. Lobdell, * Muriel MacDougall Lobdell, George W. Lord, In memory of Roderick F. MacDougall, * Eleanor Hilton

Martin, * William C. Martin, John C. McCoy, Jr., Margaret McGann Merrill, * Jennie Dunn Millett, Florence Burrill Muir, * F. Donald Poulin, * Evelyn Haycock Quinton, * Alice Linscott Roberts, * Wayne E. Roberts, Evelyn Bell Rowe, Vivian F. Russell, Pauline Gay Ryder, Florence Ventres Sherburne, In memory of Marjorie Dearborn Small, Clayton F. Smith, In memory of Philip S. Snow, * George F. Sprague, Vaughn A. Shaw, * George H. Sterns, * Marion White Thurlow, Doris Spencer Wallis, John H. J. Wisnoski and Star (mascot at 1931 reunion).

155 Members 65 Contributors 42%

CLASS OF 1932

Class agents: A. John DeMiceli, Thompson D. Grant, Louise Dyer Hall, Evelyn Platt Johnson, and Genevieve Garra Waterhouse.

Contributors: Albert E. Acierno, * Douglas B. Allan, Melvin E. Anderson, Robert T. Beals, Jane C. Belcher, Marjorie Van Horn Bernier, * James Blok, Barbara Sherman Burger, * William H. Caddoo, Stanley L. Clement, William N. Crabtree, Phyllis Farwell Curtis, William S. Curtis, Jr., * A. John DeMiceli, Carlton E. Dorman, Barbara Works Dyer, Marjorie Hooper Elwell, * Harvey B. Evans, Maxwell H. Feinman, * James E. Fell, William C. Foster, Dorcas Paul Frost, * Estelle Taylor Goodwin, * Thompson D. Grant, * Nissie Grossman, Louise Dyer Hall, William M. Hardy, * Martha Johnston Hayward, Myron M. Hilton, Talbert B. Hughes, Evelyn L. Johnson, * Evelyn Platt Johnson, Marilla Barnes Johnson, Bernard M. Johnstone, Frederick R.

Knox, Glen B. Lawrence, Madeline Scott Leach, * Harold F. Lemoine, * Howard I. Libby, Jr., Alex Lindholm, G. Alden Macdonald, Edwin W. Maddocks, Samuel H. Marder, Dolores Dignam Morgan, Dorsa Rattenbury O'Dell, Ruth Brown Peabody, * Maurice E. Pearson, * Norman C. Perkins, Tina Thompson Poulin, * Henry W. Rollins, Viola Rowe Rollins, Burrill D. Snell, Marion Richardson Snow, Morten Sorensen, LeRoy B. Starbuck, Jean Wellington Terry, Wallace C. Terry, Philip C. Thibodeau, * Clinton F. Thurlow, Ruth Nadeau Twombly, Forrest C. Tyson, Jr., Winnifred Hammett Tyson, Phyllis Hamlin Wade, Bernard Wall, Genevieve Garren Waterhouse, Phyllis C. Weston.

150 Members 66 Contributors 44%

CLASS OF 1933

Theron Stinchfield is the new principal of Brattleboro (Vt.) High School. For the past seven years he has held a similar post at Cape Elizabeth High. . . Howard Watson is personnel manager at Plax Corp., Westerly, R. I. . . Margaret Choate is teaching at Foxcroft School, Middleburg, Va. . . Carl Ackley has been named Worcester (Mass.) district manager for Socony-Mobil Oil Co. . . Ruth Leighton Thomas has received a master's degree in education from the University of Maine.

Bertrand W. Hayward is completing his tenth year at the Philadelphia Textile Institute. He served as administrative head from 1947-1954 and has been president since 1954. The June issue of *The Textile Engineer*, alumni publication of the Institute, was dedicated to Mr. Hayward's tenth anniversary. The issue highlighted some of the outstanding achievements of the Institute over the past decade; its new college campus; the library wing now going up; the accreditation of the college by the Middle States Association of Colleges; the increasing achievement of its alumni at graduate schools; and its revitalized curriculum, including new courses in textile management and marketing and in textile design.

The issue is filled with compliments to President Hayward from leaders in education and in the textile industry. Typical is the message from Dean Malcolm Campbell, School of Textiles at North Carolina State College: "During the last decade Mr. Hayward, with his excellent background in educational principles, his energy, patience and high ideals, has made a significant and note-worthy impact on textile education throughout the U. S. and abroad. Under his direction the Philadelphia Textile Institute has developed into a truly outstanding educational institution. Those of us in other



The Reverend Richard Cummings, '32, was awarded an honorary doctor of divinity degree by Kalamazoo (Michigan) College last June.

The citation read in part:

"He is a churchman with far vision, broad interests, and wide experience. He was born of Baptist missionary parents in Burma, and has manifested throughout his life an active interest in the world-wide program of his denomination. . .

"In April 1956 he accepted the position of executive secretary of the Detroit Association of American Baptist Churches. During his first year of service he has shown excellent qualities of leadership, organizing ability, cooperation, and love for people. . .

"Richard Cummings has demonstrated his worth as student, pastor, interpreter of the Christian Gospel, administrator and faithful servant of Jesus Christ."

textile colleges are proud of the work he has done in raising the standing of textile education."

Class agents: J. Robert Curtis, Perry G. Wortman, Elizabeth Swanton Allan, Marian Archer MacDonald, and Bertha Lewis Timson.

Contributors: Barbara Johnson Alden, Elizabeth Swanton Allan, Frank R. Altieri, Ruth Atchley, Charlotte Bloomfield Auger, Arthur R. Austin, Rosamond F. Barker, Edith Hoskin Bolster, *Vernon L. Bolster, Leon A. Bradbury, Elizabeth Haley Brewster, Carleton D. Brown, Herbert K. Bryan, *Frances Perkins Cary, David S. Carr, Evelyn Brackley Chadbourne, Harold F. Chase, Margaret L. Choate, Dorris Moore Cox, J. Robert Curtis, John P. Davan, *Marguerite deRochemont, Dorothy Dingwall, Emery S. Dunfee, Carl F. Foster, Averill D. Gellerson, Robert F. Greene, *Nancy Nivison Hamilton, Marion Clark Harmon, *Bertrand W. Hayward, John F. Hill, Jr., Norma Fuller Hurst, Isabella Miller Hutchinson, Dana A. Jordan, *Raymond O. Knauff, Myron J. Levine, Marian Archer MacDonald, Irving M. Malsch, *James E. Poulin, *Vesta Alden Putnam, *Lillian Reardon Shapiro, *Donald H. Rhoades, Priscilla Perkins Schumacher, David S. Sherman, Albert L. Skidds, Clyde W. Skillin, John L. Skinner, Katherine Holmes Snell, Geraldine Colbath Taylor, William M. Terry, Ruth Leighton Thomas, Tillson D. Thomas, Bertha Lewis Timson, *Louise Smith Velten, Raoul H. Violette, Robert K. Walker, Howard E. Watson, *Ruth Weston, *Otis W. Wheeler, *Ethel Bragg Williams, *R. Leon Williams, *W. Malcolm Wilson, Perry G. Wortman.

152 Members 63 Contributors 41%

CLASS OF 1934

Greta Murray Connors has received her M.A. in English from the University of Maine.

Class agents: Franklin Norvish, Mary L. Buss, Rowena Loane Cooper, and Madelyn Higgins Stanley.

Contributors: John M. Alden, Robert F. Allen, Abner G. Bevin, Pauline Goodwin Boone, Selwyn I. Braudy, Louise Williams Brown, William T. Bryant, Mary L. Buss, William J. Chapman, Adelaide Jordan Cleaves, Greta Murray Connors, Rowena Loane Cooper, *Edward W. Cragin, *Lois B. Crowell, Josephine Porter Cunningham, Rebecca Penniman Cutts, Ruth Stubbs Estes, Paul E. Feldman, Samson Fisher, Ford A. Grant, *Curtis M. Havey, *John P. Holden, E. William Huckle, Ann Lawrence Duoba, William A. Logan, Robert M. MacGregor, *Margaret Salmond Matheson, Myron H. Matz, Peter Mills, *Barbara White Morse, Eleanor Wheelwright Ness, *Franklin Norvish, *Frances M. Palmer, Harriet Pease Patrick, Arnold S. Peabody Woodrow W. Peabody, Preston W. Pennell, Everett P. Perkins, *Mary Ellen Hodgdon Prescott, George W. Pugsley, *George C. Putnam, *Portia Penleton Rideout, John H. Sawyer, *Frederick A. Schreiber, Sybil Wolman Smith, *Arthur W. Stetson, Jr., In memory of Norman A. Taylor, Mildred Keogh Tinker, Doris Donnell Vickery, Horace B. Wescott.

133 Members 49 Contributors 37%

CLASS OF 1935

Georgie Everett Foss is teaching in the public schools of Ellington, Connecticut.

Class agents: J. Warren Bishop, Edward J. Gurney, George H. Anderson, Margaret Jordan and Virginia Moore.

Contributors: Carroll W. Abbott, Warden C. Amidon, *George H. Anderson, *Leo Barron, *J. Warren Bishop, Donald M. Bither, Joseph W. Brogan, *Hope Bunker, *Ruth Thorne Chaplin, Avis Merritt Churchill, *Beth Clark Pendleton, *Morris Cohen, Laurence E. Dow, *Ellen Dignam Downing, Albion L. Farnham, Melvin C. Flood, Elizabeth Lavalley Gilbert, Briley Thomas Grant, Lawrence N. Gray, *Edward J. Gurney, *Leo F. Haggerty, *Wilma Stanley Hill, Ann Trimble Hilton, David R. Hilton, Deane L. Hodges, John W. Hunt, *Margaret Jordan, Milton P. Kleinholz, *Theophile S. Krawiec, *Maurice Krinsky, Emmart LaCrosse, Jr., Floyd F. Ludwig, Grace Wheeler Marsh, Virginia Moore, Clarence A. Morrill, Richmond N. Noyes, Ralph O. Peabody, Bettina Wellington Piper, Elbridge B. Ross, Elinor Chick Ross, *Richard S. Sawyer, *Virginia Swallow Seepe, Raymond E. Shibley, *Barbara Howard Williams, *Ralph S. Williams, Ruth Wheeler Wood, Walter L. Worthing, Llewellyn F. Wortman.

141 Members 48 Contributors 34%

CLASS OF 1936

Howard Sweet is assistant editor of the weekly classroom publication of the Civic Educational Service, Washington, D. C. The papers are used in high schools all over the U. S. . . Rossiter Marcou teaches science and directs the glee club in the Hallowell schools.

Class agents: Charles J. Caddoo, Robert W. Sparkes, Phyllis Carroll Sandquist, and Dorothy Cunningham Vendetti.

Contributors: Kathryn Caswell Abbott, Annette Tebbetts Audette, *Edna F. Bailey, Francis Barnes, Arthur W. Bartel II, Hugh D. Beach, George R. Berry, Anita Thibeault Bourque, Catherine Laughton Briggs, Arthur O. Brown, H. Leslie Brown, Katherine Rollins Brown, Robert O. Brown, Charles J. Caddoo, George H. Cranton, *George H. Crosby, *Herbert W. DeVeber, Saxon Lurvey DeWolfe, *John P. Dolan, Grace Robinson Durfee, Millard E. Emanuelson, *Edmund N. Ervin, *Raymond W. Farnham, Edythe Silverman Field, Ruth Fuller Frost, Charles R. Geer, Milton M. Gilson, Elizabeth Thompson Goodspeed, Agnes Carlyle Hadden, *Alice Boquel Hartwell, Floyd M. Haskell, Cleo Tuttle Henderson, *Harold W. Hickey, Jeanne Peyrot Hoffman, Victor J. Judson, Harold W. Kimball, Jr., Maxine L. Knapp, *Nancy D. Libby, *Ruth Millett Maker, Samuel R. Manelis, Ruth Michalek McAlary, Oliver C. Mellen, Katherine Franklin Merrill, Elizabeth Miller, Helen Kelly O'Connor, *Leon B. Palmer, Albert O. Piper, John F. Reynolds, *Dorothy Gould Rhoades, John P. Roderick, *James L. Ross, *Robert Ryan Ryan, Phyllis Carroll Sandquist, Emma-Mary Small Schlosberg, Gordon W. Schumacher, Robert W. Sparkes, Ruth Mailey Sutherland, *Howard O. Sweet, Amy H. C. Thompson,

Dorothy Cunningham Vendetti, Eleanor Mac-Carey Whitmore, Harold M. Wolff.

156 Members 62 Contributors 40%

Scrapbook Memories



CLASS OF 1937

Stan Washuk has been promoted to a full colonel in the air force reserve. He recently was awarded the commendation medal for meritorious service as an air force senior advisor. The citation praised the program of guidance that he set up to equip and train units "to a much higher degree of efficiency than normally expected."

"His pioneering in this field has established a model for organizational and training control that like organizations may well adopt. Col. Washuk's demonstration of superior qualities of leadership, organizational ability, and devotion to duty has brought great credit upon himself and the air force."

Roland Gammon was unable to return for his reunion because of a speaking engagement in Asheville, N. C. before the General Federation of Women's Clubs. In August he led the third annual Inter-faith tour which carried an American group through the Middle East and Russia.

The Rev. David Eaton has been named pastor of the First Baptist Church, Methuen, Massachusetts.

Class agents: Morton M. Goldfine, Paul K. Palmer, Sara J. Cowan, Barbara Frazee Haynes, and Ruth Walden Ludwig.

Contributors: Harold C. Allen, *Joel Allen, Edmund L. Bernard, Norman W. Beals, Dorothy Smith Brown, George N. Burt, *Wilfred J. Combella, *Sara J. Cowan, Margaret Libbey Darlow, Pauline Walker Deans, William D. Deans, Frederick G. Demers, Marcia Duoba, *Edith E. Emery, Hildreth Wheeler Finn, Richard H. Follett, Roland I. Gammon, James E. Glover, *Morton M. Goldfine, M. Edson Goodrich, *Dorothy W. Goodwin, *Barbara Frazee Haynes, In memory of Arnold H. Holt, *Eleanor Ross Howard, Harold Hurwitz, Robert D. Hussey, Kermit S. LaFleur, Romeo L. Lemieux, Willard D. Libby, Ruth Walden Ludwig, Sylvia Ross Manheimer, *Esther L.

Marshall, Ruth Yeaton McKee, Stanley A. Paine, * Paul K. Palmer, Frederick K. Poulin, Norman Rogerson, Lewis E. Rush, Elizabeth Wilkinson Ryan, Michael G. Ryan, Lillian Stinchfield Salmon, Wayne B. Sanders, Anders Sandquist, In memory of Frederick O. Sawyer, * Janet Goodridge Sawyer, John J. Sheehan, In memory of Raymond C. Simmons, Arnold E. Small, Mary Utecht Smith, In memory of Donald R. Soper, * Hazel Wepfer Thayer, Louise G. Tracey, In memory of Robert W. Turbyne, Mary Ewen Ulich, Stanley J. Washuk, Henry V. Wilcox, Whitney Wright, Gordon S. Young, Lucille K. Pinette Zukowski.

130 Members 59 Contributors 45%

CLASS OF 1938

Walter Rideout has been elected associate professor of English at Northwestern University and appointed director of the new Northwestern University program for Bell System Executives. He has been awarded a Guggenheim Fellowship to work on a critical biography on Sherwood Anderson which he will begin 1958-59.

Carleton Savage has been appointed economic geologist for the Idaho Bureau of Mines and Geology, Moscow, Idaho. . . The Rev. Phillips Brooks Henderson is pastor of the First-Calvary Baptist Church, Lawrence, Mass. . . Joseph Dobbins teaches at Houlton High School.

Class agents: Robert N. Anthony, Harry K. Hollis, Mr. & Mrs. Edward M. Hooper, Kenneth R. Bickford, Edward W. Lombard, Marion E. Dugdale, Dorothy Trainor Anderson, and Martha Bessom Gorman.

Contributors: Dorothy Levine Alfond, Priscilla Cram Allen, A. Wendall Anderson, Dorothy Trainor Anderson, Joseph G. Antan, Robert N. Anthony, Edith L. Barron, L. Russell Blanchard, Kenneth R. Bickford, George F. Bonner, Calvin L. Butler, Joseph Ciechon, Richard J. Currier, Cecil M. Daggett, Jr., Joseph D. Dobbins, Richard W. Dow, * Marion E. Dugdale, * Lawrence W. Dwyer, Frederick C. Emery, Mary Herd Emery, Michael Field, James Fox, Ernest M. Frost, * Josephine Bodurtha Gagnon, Edward H. Gleason, Martha Bessom Gorman, Alice Dignam Grady, * W. Linwood Haynes, W. Kenneth Holbrook, * Harry K. Hollis, Edward M. Hooper, Helen Lewis Hooper, * Eliot S. Irving, Helen Foster Jenison, Henry Kammandel, Edwin M. Leach, Edville G. Lemoine, Lawrence C. Lightner, Edward W. Lombard, Charles A. Macgregor, Ethel Bradstreet Maney, In memory of Alice Manley, Lucile E. McClintock, Robert V. McGee, Paul B. Merrick, Jean Cobb Murrill, Elizabeth Oliver, * Frank A. Record, * Walter B. Rideout, Anna Stobie Rogerson, Elizabeth Herd Sanders, * Carlton N. Savage, Helen Wade Sawdon, * J. Marble Thayer, Elizabeth McLeod Thompson, Sigrid E. Tompkins, * Maynard C. Waltz, In memory of Eugene V. Williams, Robert S. Winslow, Harold M. Wolman, Louise Weeks Wright.

178 Members 61 Contributors 34%

CLASS OF 1939

Richard Lovejoy teaches general science in Holden, Mass. . . Richard Hop-

kins has been appointed principal of the high school in Freeport. He has been principal of Erskine Academy in South China for the past six years.

Class agents: Kenneth G. Stanley, Robert S. Borovoy, Elliot H. Drisko, Mr. & Mrs. Gilbert E. Hutchinson, Freda K. Abel, and Virginia Kingsley Jones.

Contributors: Freda K. Abel, Gerald M. Armstrong, Elizabeth Darling Bates, James R. Beaton, Ruth Pike Berry, * Robert S. Borovoy, * Leon J. Braudy, Eleanor Davis Broughton, Leland C. Burrill, * Robert V. Canders, Virginia Yorke Choate, Charles L. Dignam, Clarence E. Dore, * Elliot H. Drisko, In memory of Howard E. Goodman, Joyce Perry Goss, * Helen Carter Guptill, * Nathanael M. Guptill, Constance Knickerbocker Harney, Priscilla Jones Hauter, * Elizabeth Solie Howard, Gilbert E. Hutchinson, Marion Crawford Hutchinson, Lester Jolovitz, Virginia Kingsley Jones, Marion Ackley Joseph, * Leo S. Kresky, Mary Crowley LaFleur, * David C. Libbey, In memory of Victor P. Malins, Sylvia Ross Manheimer, In memory of Tiffany N. Manning, In memory of Edward D. McIntyre, Evelyn Short Merrill, Anne Simpson Miller, Katherine Coffin Mills, * Arlene Paine Osias, In memory of John S. Pendleton, Jr., * Wilson C. Piper, Pauline Pratt Plaisted, Maurice A. Rancourt, * Jeannette Drisko Rideout, C. Bertrand Rossignol, * Louis Sachs, In memory of James W. Salisbury, Dwight E. Sargent, Judith Quint Schneider, Stanley H. Schneider, Jean Burr Smith, Kenneth G. Stanley, Marjorie Towle Stinchfield, Raymond D. Stinchfield, Charles P. Uppvall, * Arline Bamber Veracka, Earl L. Wade, Ralph C. Wilde.

150 Members 56 Contributors 37%

CLASS OF 1940

John Gilmore teaches social studies at Cape Elizabeth High School. . . Norma Leppanen took a six weeks course of study at the Graduate Summer School for Teachers, Wesleyan University. She is on the faculty of the high school in White Plains, N. Y. . . Virgil Hincley has received a master's degree in education at the University of Maine.

Class agents: Ernest C. Marriner, Jr., E. Robert Bruce, Linwood L. Workman, Jr., Frances C. Gray, Leah-Doris Russell, and Marjorie Day Weeks.

Contributors: Isabel C. Abbott, J. Ande Baxter, Prince D. Beach, Russell M. Birtwistle, In memory of Fred Blumenthal, Brewster A. Branz, Ruth Moore Brown, E. Robert Bruce, * Mary Wheeler Bruza, James M. Bunting, Horace F. Burr, Robert B. Carr, Clark H. Carter, Raye Winslow Carter, Richard L. Chasse, William A. Chasse, Joseph J. Chernauskas, Florence Stobie Demers, Clarence R. Fernald, Floyd L. Fitts, * Fred M. Ford, Halsey A. Frederick, Jr., M. Donald Gardner, Phyllis Chapman Gardner, Donald A. Gilfoy, Helen Brown Gilfoy, John E. Gilmore, William L. Gousse, Jr., In memory of Charles W. Graham, * Frances C. Gray, Edward H. Jenison, In memory of Francis D. Johnson, * Margaret Johnson Kenoyer, * Gordon B. Jones, Stanley W. Kimball, Angelo L. LeBrun, Maynard Levin, Earle C. Lord, Jr., In memory of Charles F. Maguire, * Priscilla B.



Robert N. Anthony, '38, has been granted a year's leave of absence from Harvard Business School where he is professor of business administration to take part in starting the Management Development Institute in Lausanne, Switzerland.

The Institute is affiliated with the University of Lausanne and is sponsored by a group of Swiss companies. Its students are young executives from European countries who are studying an intensive course in business administration during the year.

Mailey, Ruth Hendricks Maren, * Ernest C. Marriner, Jr., Buell O. Merrill, Robert H. Mitchell, In memory of George O. Nelson, Julia Wheeler O'Sullivan, Caroline Piper Overfors, * Elizabeth Walden Palmer, Warren Pearl, Ellen Fitch Peterson, George A. Pike, * Leah-Doris A. Russell, In memory of Maurice O. Searle, Edson R. Small, William A. Small, Kathryn Carson Smith, Constance Pratt Spinney, Roger Stebbins, Ruth Gould Stebbins, Philip A. Stinchfield, In memory of Paul R. Stubbs, * Conrad W. Swift, G. Flint Taylor, William D. Taylor, Alleen Thompson, Arthur T. Thompson, Patricia Thomas Thompson, Constance L. Tilley, Alfred N. Timberlake, Leon Tobin, * Marjorie Day Weeks, Elizabeth C. Wescott, Richard H. White, * Linwood L. Workman, Jr.

184 Members 72 Contributors 39%

CLASS OF 1941

The Rev. Linwood Potter, pastor of the First Congregational Church, Farmington, spent two weeks last summer as chaplain to the men of the 304th Infantry Regiment at Camp Drum, N. Y. He is a captain in the army reserve. . . A master's degree in education has been awarded to Franklin Downie by the University of Maine.

Norris Dibble has re-entered the practice of law after serving as assistant to the president of the Monarch Life Insurance Co., Springfield, Mass. He has joined the law office of John I. Robinson in Springfield.

Class agents: James A. Daly, J. Joseph Freme, Hoover R. Goffin, Mildred VanValkenberg Demartini, and Mary Robinson Taylor.

Contributors: * Henry W. Abbott, Jr., * Jane Russell Abbott, * Elizabeth Sweetser Baxter, * Elmer L. Baxter, Mary Hitchcock Baxter, George L. Beach, Jr., Stetson C. Beal, Hartley A. Bither, Richard H. Bright, Alfred

L. Brown, Jean Pearson Burr, Thelma Bassett Cornell, * Mildred Van Valkenburg Demarini, Norris E. Dibble, Franklin A. Downie, John C. Eaton, James J. Foster, J. Joseph Freme, Diana Wiesenthal Friedman, * Hoover R. Goffin, * Stanley Gruber, In memory of William L. Guptill, Ruth Roberts Hathaway, William H. Hughes, * Geraldine Steffko Jones, Allan R. Knight, Clare Donahue Libby, Hiram P. Macintosh, Beatrice Kennedy Maltais, Ada Vincour Mandell, In memory of Myron L. Mantell, * Prudence Piper Marriner, Dorothy Emerson Martin, William H. Martin, Howard A. Miller, Warren H. Mills, In memory of Arnold M. Myshrall, In memory of George M. Neilson, In memory of Richard E. Noyes, Winnifred Odlin, Jerome Orenstein, Linwood C. Potter, Ruth Scribner Rich, Robert L. Ryan, Virginia Ryan, Florence Roak Shields, Alison Pike Slade, Willetta McGrath Snow, Wendell T. Starr, Stephen S. Sternberg, Herbert D. Sterns, George J. Stumpp, Mary Robinson Taylor, Shirley Porton Thrope, B. Stephen Topalian, Edwin A. Toolis, Ronald H. Wallace, Olive Savage Ward, Barbara Kaighn Warner, * Joanna MacMurtry Workman, George W. Young.

152 Members 60 Contributors 39%

CLASS OF 1942

The Rev. *Burton Linscott* returned to the U. S. this summer with his wife and two children for a vacation from his missionary duties at the Epiphany Church and school, Honolulu, Hawaii. At his mission school he has 200 children. . . *Eero Helin* has been appointed teacher of physical education, head coach of baseball and assistant coach of football at Easton (Mass.) High School.

Celia Rather Hutchinson and her husband have opened a magnificent new 20-unit motel on West Harbor Lake, Boothbay Harbor. It is known as the Lakeview Motel. . . Major *Edwin Fisher* is stationed at Ft. Huachuca, Arizona.

Class agents: Charles A. Lord, Lewis E. Weeks, Mr. & Mrs. Harold J. Bubar, Arthur B. Lincoln, Robert S. Rice, and Muriel Carrell Philson.

Contributors: Mary Anacki, Robert M. Arnold, In memory of Frank B. Bailey, William E. Barta, Jr., Dorris Heaney Batt, Martha Rogers Beach, Susanne Rose Bessey, Ruth Thomas Brown, Harold J. Bubar, Louise Hagan Bubar, Charles R. Burbank, Robinson D. Burbank, * Clifford F. Came, Jr., William R. Conley, Richard R. Dyer, In memory of Forrest E. Edson, Jane Soule Engert, Dorothy Smith Fernald, * Olive Monell Gifford, Ann Jones Gilmore, Milton W. Hamilt, * Eero R. Helin, Barbara R. Holden, Max A. Holzrichter, Harold L. Huntoon, Carolyn Hopkins Johnson, In memory of Harold A. Johnson, Lincoln V. Johnson, Mary Elizabeth Jones, in memory of John C. Kitchen, * Ruth Crowell Knight, Richard N. Kohn, * Alton G. Laliberte, Victor A. Lebednik, Arthur B. Lincoln, Jr., Melvin N. Lock, Edward F. Loring, Christine Bruce Lyon, Weston MacRae, Jean Cannell MacRae, * Eleanor Cornish Martin, Robert R. McDonnell, Helen Henry Merritt, Florence Perkins Mignery, Saul Millstein, Albert Newell, Linwood E. Palmer, Jr.,

George A. Parker, Jr., A. Wilder Pearl, Walter M. Pejko, * Muriel Carrell Philson, J. Franklin Pineo, Jr., In memory of Gilbert E. Potts, * Joseph Richard Rancourt, Robert S. Rice, * Priscilla George Ross, Albert I. Schoenberger, Ruth Wolfe Schreiner, Harold D. Seaman, Betty-Anne Royal Spiegel, In memory of John C. Stevens, John E. Stevens, John L. Thomas, Jr., * Marion B. Thomas, Margaret Campbell Timberlake, In memory of Elmer J. Tower, Jr., William E. Tucker, John B. Warner, Lewis E. Weeks, Jr., Theodora Wright Weston, Priscilla Hathorn White, Betsey Libby Williams, Charles J. Williams, Paul A. Willey, In memory of Harmon R. Wit, Marie Merrill Wysor, Philip B. Wysor.

197 Members 77 Contributors 39%

CLASS OF 1943

William Finkeldey is syndicated sales manager for RKO Television. . . *Marc Temmer* has been promoted to assistant professor of French at the University of California. . . *Abe Ferris* has been appointed assistant football coach and general science teacher at Portland High School.

Barbara Grant Nnoka writes from Sapele, Western Nigeria: "I teach English at an African-owned boys' secondary school here (Sapele) where I live right on the school compound. . . The twins are now 17 months; neither of them is a placid baby.

"The circle of my Nigerian experiences grows wider each year, having started with the illiterate Ibibio women in the bush of Calabar and the Colonial Civil Service; then moving into tradition-bound Onitsha, the center of Ibo-land where I lived in the semi-literate African town; and now we are in Sapele where more of our friends are members of the new African middle class, the lawyers, senior civil servants, doctors, and teachers."

Hope-Jane Gillingham Meyer is librarian for the Parker Farms (Conn.) Mobile Library. . . *J. Preston Barry* has been appointed assistant principal of Hingham (Mass.) High School.

Scrapbook Memories



Class agents: Ronald M. Reed, Mr. & Mrs. Thomas R. Braddock, James W. Moriarty, George A. Popper, Priscilla Moldenke Drake, Jeanice Grant Keese, Ruth Graves Montgomery, and Hilda Niehoff True.

Contributors: Charles G. Barletta, James W. Bateman, Hubert S. Beckwith, * Elizabeth Field Blanchard, Daniel Blatman, * Jeannette Nielsen Braddock, * Thomas R. Braddock, * Eleanor Smart Braunnmuller, Leonard Caust, Norman A. Chaletzky, * Elizabeth Tobey Choate, Leonard G. Cohen, * Kathleen Monaghan Corey, Robert C. Cornell, In memory of Harold A. Costley, Marjorie McDougal Davis, Priscilla Moldenke Drake, Anne Dunmore, Natalie Cousens Dyer, Ressa Flewelling Edmunds, Patricia Ford Ellis, * Thomas W. Farnsworth, Jr., Madeleine Hinckley Gibbs, In memory of Harrison A. Gorman, In memory of Donald A. Gray, In memory of Robert M. Gray, Harry P. Hildebrandt, Charlotte Arey Hoppe, * Calvin K. Hubbard, George H. Jahn, Howard R. Johnson, Justin O. Johnson, Jr., Jeanice Grant Keese, In memory of Robert A. LaFleur, Anita Pooler Laliberte, Perley M. Leighton, Ronald D. Lupton, James R. McCarrroll, Glenna Hartley Meade, Oliver N. Millett, Jr., * Frank J. Miselis, * Ruth Graves Montbomery, * James W. Moriarty, In memory of Leonard Murphy, In memory of Paul R. Murphy, Leonard L. Osier, Geraldine Fennessy Parker, Charles F. Pearce, Jr., * George A. Popper, Marjorie Brown Pursley, Thomas A. Pursley, In memory of Frank S. Quincy, Elizabeth Durand Ransom, Sidney J. Rauch, * Ronald M. Reed, In memory of Howard F. Rowell, J. Kenneth Shepard, Robert Singer, Lillian Beck Skolem, Lyndon A. Small, John M. Stillwell Jr., * Hilda Niehoff True, Ruby Lott Tucker, Louis J. Volpe, Jr., Jacquelyn Nearney Wallace, Ernest G. Weidul, Donald C. Whitten.

163 Members 67 Contributors 41%

CLASS OF 1944

Maj. *Frederick Wood*, U. S. Marine Corps, is assistant professor of naval science at Tufts University. . . *James McMahon* teaches freshman English and journalism at Bemidji State Teachers College in Minnesota. . . *Robert Riefe* is a research associate at the Russian Research Center, Harvard University. . . *Malcolm McQuillan* heads the English and French departments at Colon (Michigan) High School.

Class agents: Robert E. Kahn, Harold L. Vigue, Mildred Steenland Ellison, and Barbara White Haddad.

Contributors: * Rae Gale Backer, * Nancy Curtis Bacon, Lowell E. Barnes, * Helen Watson Boldi, Vivian Maxwell Brown, Catherine Clark Brunell, Robert H. Brunell, * Patricia Berquist Donna, Russell E. Brown, Donald M. Butcher, John C. Calahan, Virginia Hall Calahan, Cornelius Callaghan, Jr., Jane Bell Corydon, Jean McNeill Decker, Alexander E. Dembkowski, * Wesley R. Doe, Mildred Steenland Ellison, William E. Frazier, W. Harris Graf, Arnold Grossman, Barbara White Haddad, William R. Hibel, Jan Hudson Hinman, Frederick W. Howard, * William Hutcheson, Hope Mansfield Jahn, * Robert E. Kahn, Harry L. Levin, Barbara Blaisdell Libby, Carlyle L. Libby, * N. Douglas MacLeod, Jr., Eileen A.