



1956

Colby Alumnus Vol. 45, No. 2: Winter 1956

Colby College

Follow this and additional works at: <https://digitalcommons.colby.edu/alumnus>



Part of the [Higher Education Commons](#)

Recommended Citation

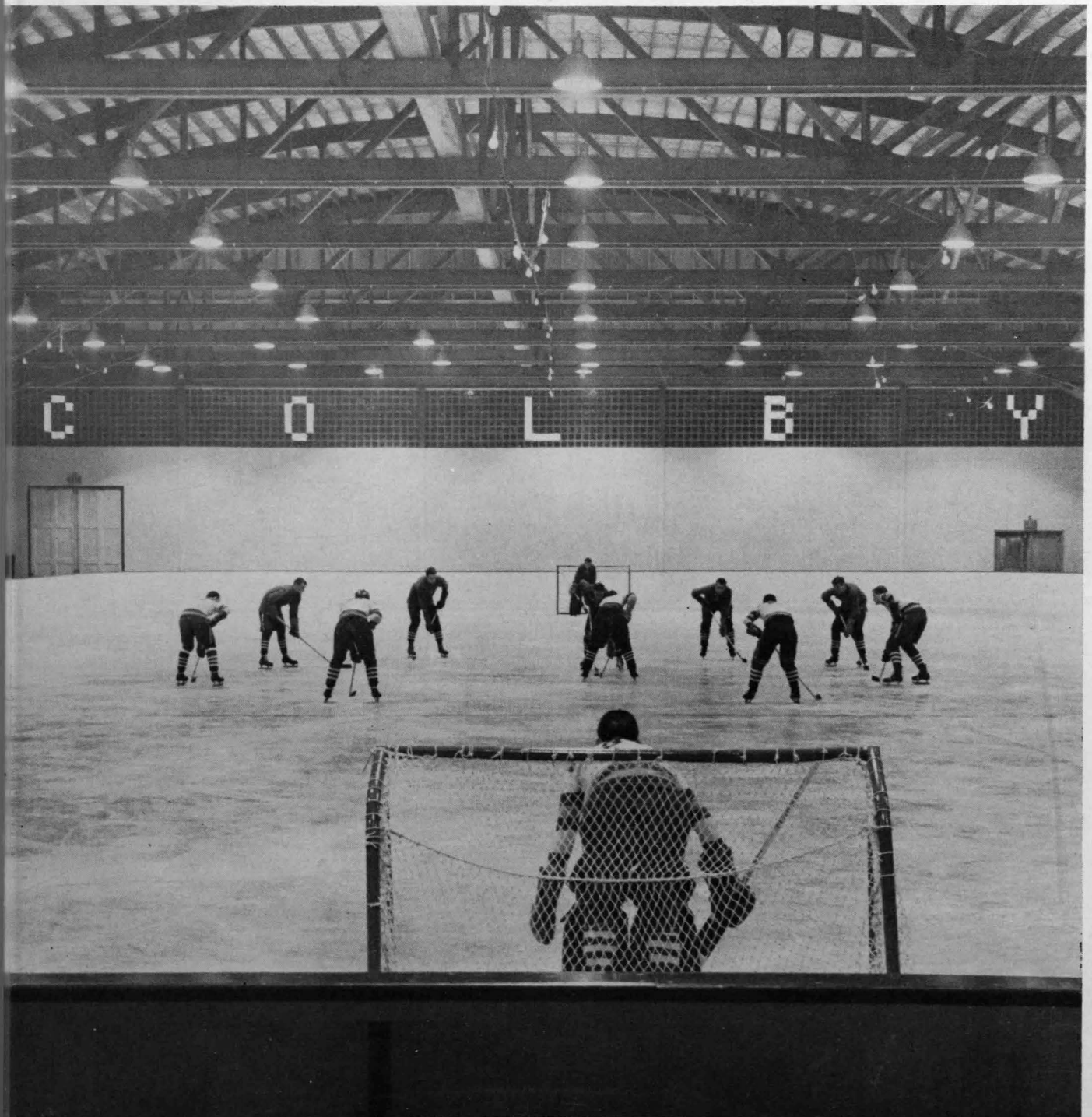
Colby College, "Colby Alumnus Vol. 45, No. 2: Winter 1956" (1956). *Colby Alumnus*. 194.
<https://digitalcommons.colby.edu/alumnus/194>

This Other is brought to you for free and open access by the Colby College Archives at Digital Commons @ Colby. It has been accepted for inclusion in Colby Alumnus by an authorized administrator of Digital Commons @ Colby.

THE COLBY ALUMNUS



WINTER 1956



Colby Calendar

A Schedule of Events on Mayflower Hill

MARCH

1	4:00 p.m.	GABRIELSON LECTURE	Norman J. Padelford, <i>Chairman, Political Science Department, University of Pennsylvania</i>
2	8:00 p.m.	AVERILL LECTURE	Professor Leonard Labaree, <i>Professor of History, Yale</i>
3	6:00 p.m.	FRESHMAN HOCKEY	Bowdoin
	8:30 p.m.	Varsity Hockey	Bowdoin
8	4:00 p.m.	GABRIELSON LECTURE	Clyde E. Dankert, <i>Professor of Economics, Dartmouth</i>
15	4:00 p.m.	GABRIELSON LECTURE	Frank Altschul, <i>vice president, Council on Foreign Relations</i>
17	7:30 p.m.	BAND FESTIVAL	Annual Concert by All-Maine College Band

APRIL

5	4:00 p.m.	GABRIELSON LECTURE	Earl O. Heady, <i>Professor of Agricultural Economics, Iowa State College</i>
10-13		CONVOCATION	"Re-discovery of the Individual"
19	4:00 p.m.	GABRIELSON LECTURE	Curtis Hutchins, <i>president, Bangor & Aroostook Railroad</i>
20	3:00 p.m.	Varsity Baseball	Williams
21	2:00 p.m.	Varsity Track	Norwich
26	4:00 p.m.	GABRIELSON LECTURE	Leland Olds, <i>former chairman, Federal Power Commission</i>
27		OPENING EXHIBITION OF GREAT DRAWINGS	
	8:00 p.m.	AVERILL LECTURE	Paul Sachs, <i>former chairman, Department of Fine Arts, Harvard</i>
28	2:30 p.m.	FRESHMAN BASEBALL	Higgins Classical Institute
29	8:00 p.m.	CONCERT	Colby College Symphony, Thomas Richner, soloist
30	8:00 p.m.	ORGAN RECITAL	Thomas Richner

Colby Alumnus

VOL. 45 WINTER 1956 No. 2

Editor RICHARD NYE DYER

Business Manager

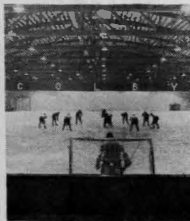
ELLSWORTH MILLETT, '25

The Colby Alumnus is published four times yearly, Spring, Summer, Fall, Winter, by the Alumni Council of Colby College. Subscription rate — \$2.50. Single copies — \$.75. Entered as second-class matter Jan. 25, 1912, at the Post Office at Waterville, Me., under Act of March 2, 1879.

President's Page	2
Talk of the College	3
Convocation Preview	6
Colby Folk in the Headlines	8
The Rink That Colby Built	9
Alumni Fund Report	13
Sports	22
Keeping in Touch	23
In Memoriam	29

Photo credits: Cover and page 10, Bill Tobey, '44; page 4, Norman Crook, '56; pages 9, 11, 12, Longley Studio; page 22, Waterville Morning Sentinel.

ON THE COVER



During the past weeks representatives of several colleges have visited Mayflower Hill. The big attraction? —

the new indoor artificial ice arena, named for Harold Alfond. The rink is a beauty and colleges with similar ambitions are taking a close look. It's too bad the visitors cannot spend an entire week and see the tremendous contribution the rink makes not only to Colby, but to the community.

They should have been around for the thunderous roar that greeted Donald Vollmer when he pushed in the first goal against Bowdoin; or Saturday mornings when happy, excited "pee-wee" hockey players take to the ice; or the days the surface has bulged with adults and children enjoying recreational skating. Ex-governor Sewall, at the dedication, described the arena as "a wonderful symbol of cooperative effort."

And he closed with these fitting words, "As I see it this college is a place where cooperation is taught, team work is taught, and out of that comes great things. . . I can't help but think Colby has done it again!"

Probably the crisis which gave impetus to the White House Conference on Education has received discussion from more thoughtful citizens than any other national problem in history. It is estimated that the two thousand delegates represented over five hundred thousand citizens who at one time or another have discussed critical educational problems in local, regional and state conferences leading to the White House Conference.

The unprecedented interest shown by people from all walks of life and from all sections of the nation and its territories was generated by a request from the President that our citizens be given an opportunity to make the most complete and thorough study of educational problems ever attempted. The response was most gratifying. The meticulous and widespread planning contributed in large measure to the success of the conferences. However, the eagerness and enthusiasm of people everywhere to discuss educational issues resulted in thousands of local and regional conferences through which people saw the opportunity to share in a gigantic effort to solve educational problems.

It was my observation, as coordinator for the State-of-Maine, that many of the citizens became aware for the first time of the critical problems facing the schools of the nation. They were shocked at the prospect of the impending tide of children who will swell the school enrollments in the immediate future. They were depressed by the knowledge that the educational program of vast numbers of our children is suffering severely by overcrowding, inadequate facilities, and above all, by a lack of competent teachers. They became concerned about how to meet the financial burdens presented by these and other problems.

As a delegate to the White House Conference, I was impressed by the unusual method of organization which resulted in a real working conference rather than a listening or speech making type of convention.

Through participation in numerous local meetings, regional conferences, and the White House Conference, I have sensed a profound and firm conviction of the people of America that their ideals and their hopes are bound closely to education. Moreover, they, as citizens, are willing and eager to work toward solutions to educational problems to the end that improved opportunities may be made available to the nation's youth.

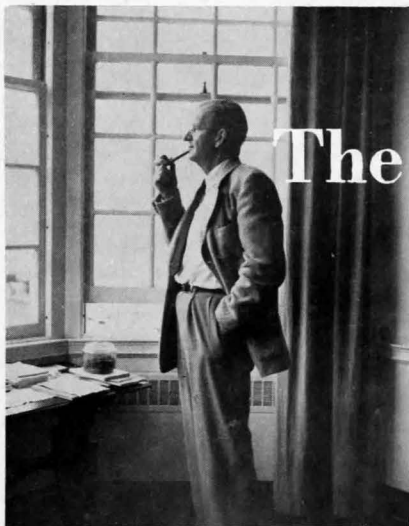
There can be no doubt that many desired results will come from the White House Conference. However, should our interest flag at this point much of the time and effort of thousands of people will have been in vain. In no sense was this conference a culminating activity. On the contrary, it should serve to initiate the greatest cooperative movement for the improvement of education that our country has ever known.

As a Colby alumnus, it is only natural that I should consider some of the implications for Colby people. Traditionally, Colby has made an outstanding contribution to the teaching profession. For many years Colby has ranked high in the number of graduates entering teaching. These people have established an enviable reputation and have been counted among the finest in the land. Gradually the number of Colby teachers has diminished; probably for rather obvious reasons.

In the light of the urgent need for well qualified, competent teachers at elementary, secondary and college levels, there seems to be a challenge to Colby to redouble its efforts to take a place of leadership once again in this field. As an outstanding liberal arts college, don't we have an obligation to American society in this direction?

I am sure that Colby people continue to hold a strong interest in matters of education at all levels. I am also confident that they will be among the first to study the results of this great conference in an effort to work out solutions to one of the nation's most serious problems.

Earle A. McKeen, '29



The President's Page

Ask a student why he chose a college of liberal arts rather than a technical school and the chances are he will be unable to tell you. This is why we are looking forward so eagerly to our Liberal Arts Convocation to be held in April. Yet is the undergraduate alone in his embarrassment? Even alumni have been known to quail before the effort to explain what their training did for them and those of us whose work requires constant speech-making on the meaning of a liberal education are always charged with using words that obscure more than they reveal.

But with our Convocation almost upon us let me try once more. I would say that the real sign of a liberally educated mind is its freedom. Its zest for the life of free inquiry is not hampered by custom, convention, or prejudice. The liberally educated mind is inventive and experimental. It meets unexpected challenges quickly and is not afraid to blaze new trails when facing new problems.

This is to suggest that it is equipped not only with knowledge but with what we may call intellectual know-how. There are, after all, only a few different ways of knowing, but all of them are important. Science offers us the way of hunches tested by observation, also (as in some branches of biology) the way of spotting the new by classifying it with the old, also (as in mathematics) the way of comparison and analysis. History teaches us how to recognize what is significant in the past; language opens up the free use of those parts of our minds used in expression, and literature, rightly taught, lays bare the workings of the human heart. Philosophy explains how to combine these various forms of awareness in a continuous on-going search for beliefs that harmonize and form a consistent picture of the world we live in.

Thus the liberally educated man knows not only facts but principles. He is able—so to say—to squeeze the juice out of facts and get at their inner meaning. Most important of all, he sees at least some of the possibilities to which the facts point. He is therefore able to face them in the mood of adventure called for by times like the present when history must not be allowed to repeat itself.

In other words I think we should agree that we want our students to know not only the facts of history but the ways novelty has appeared in history. We want them to feel for themselves what the presence of novelty means and to develop for themselves the kind of intellectual resourcefulness that will enable them to stand up to it. This resourcefulness must be their mainstay when social issues press in on them. We want them to know the facts of physical science but of course we want them to be able to use these facts for social advance and the best way to assure this is to open up to them some of the possibilities of both physical and human nature that have not yet been explored. Mathematics, showing as it does that reason is the same on both sides of the iron curtain, should help them to build bridges not only for the gaps in the earth's surface but for those that appear between human minds. The right training in literature should enable our students to read not only their own hearts but those of any possible foe, and to find common ground for agreement.

"The spirit of generalization should dominate a university," Professor Whitehead once said, and he added: "The function of a university is to enable you to shed the details in favor of the principles." At our April Convocation seven famous men and one distinguished woman—an educator, a scientist, an artist, a musician, a novelist, an industrialist, a foundation executive, and a philosopher will come to Colby to explain to us what a liberal education really means. Undoubtedly many details will be shed and I, for one, am confident that a new feeling for principles will emerge, and that we shall find new enthusiasm for the task we have set ourselves as a college.

J. S. Bixler

The Talk of the College



THE cause of better faculty salaries received powerful support nationwide December 12 when 615 independent colleges, emphasizing the liberal arts and sciences, were selected for generous grants from the Ford Foundation. Twenty-six million dollars was awarded by the Foundation to assist American higher education.

Colby's share was \$432,900. This total represents a basic figure, roughly equivalent to the 1954-55 faculty payroll, plus an "accomplishment grant." The college was one of 126 institutions receiving the latter, given in recognition of the efforts these colleges have made on their own to better the financial status of teachers.

In Colby's case, the average full professor's salary has increased 65% since 1946-47.

President Bixler commented on the Ford Foundation program in these words: "The heart of the college is the classroom in the sense that what goes on there determines the tempo and quality of the life of the institution. What happens in class depends on the teacher. What the teacher does depends on who he is, how well he is trained and how happy he is in his work. Consequently the college has no greater obligation than that of providing faculty salaries as adequate and generous as its budget will allow. For some time now Colby has given endowment for faculty salaries top priority in its money-raising efforts. This grant will bring very substantial aid and will be most encouraging to all the college's alumni and friends."

The basic grant from the Foundation is restricted to endowment, the



Hear This!

Alumni are invited to tune to the nearest American Broadcasting Company station Sunday evening, April 8, when America's Town Meeting of the Air will originate from Colby. President Bixler will be a principal speaker on the program which will open Convocation week at the college.

America's Town Meeting is one of the oldest and most stimulating of all educational broadcasts. Since it started touring in 1941 (it has been on the air since 1935) it has visited 42 states and 14 foreign countries. The program is carried by more than 300 ABC stations and is beamed around the world by the Voice of America and the Armed Forces Radio Service.

college being required to use the income for increasing faculty salaries. The accomplishment grant can be used for endowment or capital expenditures on the theory that the colleges so rewarded have had to defer many pressing needs in order to devote more funds to faculty payrolls. One half of the Foundation grants will be paid by July 1956; the remainder by July 1957.

The breath-taking Ford program provides a tremendously helpful boost which must not be minimized. Achievement of the college's goal for faculty salaries, however, still lies in the larger measure of self-effort that the Foundation encouraged in its accomplishment grants.

New Chapter for Old Colby?

ALUMNI frequently ask what is being done to dispose of the unsold portion of the old campus. An extensive engineering survey being made by the Maine State Highway Commission may play a major role.

A result of the survey will be a plan for re-routing Maine Central Railroad tracks which are now in the area of the campus. While the future layout is not known, it is positive the MCRR will need to acquire much of the remaining old Colby land and several of the buildings if re-routing is to take place.

The present proposal shaped up more than a year ago when Colby trustees, through a committee composed of Ellerton M. Jette, 1955 (Hon.), Carleton D. Brown, 1933, A. Galen Eustis, 1923, Willard Jennison, and President J. Seelye Bixler, tentatively approved a plan devised by Mr. Brown to eliminate several grade crossings by using land on the old campus.

Mr. Brown, appointed to represent the trustees' committee, took the proposal to railroad officials and later to the Maine State Highway Commission. It was pointed out that the City of Waterville and the State of Maine could jointly become eligible, under a federal appropriation, to obtain funds for the removal of the two railroad crossings on College Avenue which are on a federal highway.

Before the funds can be allocated, however, the state must present a survey, cost estimates, and other data to the federal government. The project contemplated will cost in excess of one



HISTORIC — Herbert E. Wadsworth, right, in whose memory the Mayflower Hill fieldhouse has been named, receives a Varsity "C" certificate from "Mike" Loebs, director of the department of health and physical education. Standing in the background of this historic photograph, taken in 1934, are, left to right, Bill Millett, Eddie Roundy, and the chairman of the board of trustees at that time, George Otis Smith.

million dollars. It would eliminate the Front Street crossing and both crossings on College Avenue by extending the main line of the railroad in a northerly direction over the old campus. Further expenditure could also remove crossings at Chaplin and Upper Main Streets.

The study was estimated to cost approximately \$35,000. The city government voted \$5,000 and a formal order passed by the Legislature asked the Maine State Highway Commission to conduct the survey from its own funds, to prepare the plans and specifications; and to submit them to federal authorities.

Trustee Brown played a major role in securing this action, appearing before the Legislative Committee along with other representatives of Colby and of the city.

Another Colby Asset

EARLE A. McKEEN, Class of 1929, has returned to Colby to be director of placement. He resigned as School Plant Development Director for Maine's Department of Education to accept the post. In addition to his duties in placement, McKeen will assist Director of Admissions Bill Bryan.

Earle has been affiliated with education since his graduation from college, serving as high school principal at Winterport, Ashland, Oakland and Waterville Junior High. For a year prior to his appointment with the Department of Education in 1955, he was superintendent of schools in Winslow.

President Bixler accompanied his announcement of the appointment with this statement: "Colby recognizes its

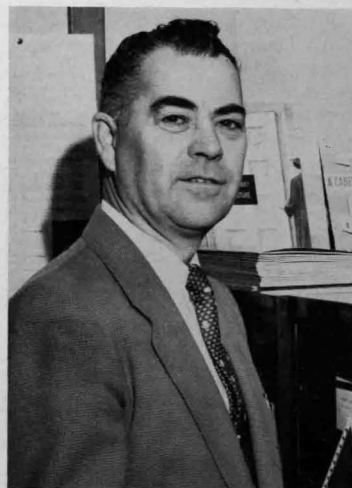
responsibilities to provide the finest possible guidance in placement. We realize also that this is a two-way street. Students and graduates must have the best possible information about jobs and careers and personnel records must be made readily available for businesses, corporations, and all others who seek to hire men and women from the college. We feel Mr. McKeen, an experienced administrator who has a rich background in education, is admirably fitted to assume these responsibilities."

Memorial to a Loyal Son

THE YEAR WAS 1934. The occasion was the retirement as chairman of the board of trustees of one of Colby's most devoted sons and generous benefactors. President Franklin W. Johnson spoke in this fashion: "He has set a standard of loyal service the equal of which I do not know."

Dr. Johnson was referring to the late Herbert E. Wadsworth, 1892, whose deepest love was for Colby and for young people. He was a familiar figure on the old campus. A recent decision by the board of trustees assures that his name will live once again on the new.

The Mayflower Hill fieldhouse has been dedicated to his memory. It is an appropriate tribute, not only because of his overwhelming interest in the college, but because of his knowledge and respect for sports.



Earle McKeen, 1929



New York's famed Town Hall where the glee club will sing March 23.

Mr. Wadsworth, a successful Maine manufacturer and legislator, was elected a trustee in 1917. He succeeded the eminent Judge Leslie Cornish, 1875, as chairman in 1925.

"During his years as a trustee," Dr. Johnson recalls, "he failed to attend only one meeting when he was confined to his home by illness. He served faithfully upon many important committees and was the originator of many ideas. Among these were the introduction of courses in business administration and the raising of funds for the construction of the fieldhouse on the old campus."

The present Herbert Wadsworth professorship in business administration was made possible through his bequest. The Wadsworth fieldhouse will honor still another facet of his interests.

Welcome Assistance

IN ADDITION to the magnificent grant from the Ford Foundation, Colby has received \$1,000 for "improving salaries of faculty members" from the Equitable Life Assurance Society of the United States and \$3,500 from the Esso Education Foundation, established by the Standard Oil Company in conjunction with several affiliates.

Eugene Holman, chairman of the Foundation, informed President Bixler that the gift was made without restrictions "except that it shall be used to help defray operating expenses in connection with undergraduate education."

In Brief...

CONCERTS DURING MARCH in Town Hall, New York City and at Hartford are targets for the glee club. Director Peter Re and his singers have been received enthusiastically wherever they have appeared. Return engagements are usually a must. A case in point is Portland Symphony Director Richard Burgin's insistence that Colby perform again in April with that orchestra.

The glee club will "warm-up" for Portland at the Convocation with a repeat of its Town Hall repertoire. Guest conductor on that occasion will be Hugh Ross, under whom Professor Re studied choral directing at Tanglewood.

Sponsoring the Town Hall concert, set for 3 p. m., March 23, is the New York City Alumni Association. The evening of March 22, the glee club will perform in Hartford as guests of the Connecticut Colby Alumni Association.

COLBY INTRODUCED another "first" on the state's collegiate sports scene January 7 with hockey-basketball doubleheaders. A single admission price permitted the public to see a hockey game with Norwich (won by the Vermonters, 7-2) and later in the evening a basketball upset of Amherst, 59-56. In the afternoon the freshmen performed in a similar doubleheader, winning in hockey over Waterville High and in basketball over Dow Air Force Base.

DR. HERBERT GEZORK, president of Andover-Newton Theological School, gave the keynote address opening Colby's Religious Convocation, February 6. The two day program also featured as speakers the Reverend William J. Gold, executive director of the Unitarian and Universalist Youth Fellowship; Rabbi Albert Yanow of Temple Ohabei Shalom, Brookline, Massachusetts; James Miller, assistant professor of religion and philosophy, Bates College; and Dr. William A. Overholt, chaplain to Protestant students at Boston University.

THE HIGHLY SUCCESSFUL Institute for Maine Industry, sponsored each spring by the college in cooperation with several organizations, will be held March 23-24. Wallace E. Parsons, Colby trustee and president of the Keyes Fibre Company, is serving as chairman for the third consecutive year.

THE OPPORTUNITY to invest in Colby through life income and annuity plans, described by one investor as "not only income for life, but life for your income," has found an impressive response. From July 1, 1955 to January 13, 1956, new annuities amounting to \$62,000 have been written for the college. Alumni wishing a copy of the excellently prepared *Life Income* booklet may obtain it from the Director of Development at the college.

IF THE STATISTICS that have been supplied us are correct (and we have no reason to doubt them!) SAMUEL B. SHEPARD, 1883, of Bar Mills, at the age of 98, is not only the oldest living alumnus of Colby, he is the oldest living graduate of any Maine college. Mr. Shepard was born August 24, 1857; Bowdoin's oldest, Henry Augustus Huston, was born April 20, 1858; Bates' oldest, Emma Jane Clark, was born January 15, 1859; and the oldest graduate of the University, Dean-Emeritus James Norris Clark, was born in 1861.

PRESIDENT BIXLER was the subject of "Portrait of the Month" in the December issue of *Advance* magazine, the national journal of Congregational Christian Churches. The article was titled *An Ally of Aspiring Youth*. "Whether listening to his chapel talks or to his answers while seated informally on the Bixler living-room rug, Colby students know that in their president they have a strong and devoted ally."

THE MANUSCRIPT of *Seven Steeples* has been presented to the college by its author, the Reverend Margaret Henrichsen. The famed North Sullivan pastor received an honorary doctor of divinity degree from Colby in 1954. Her book has had six printings and has sold, according to its publisher, Houghton Mifflin, almost 114,000 copies. In *Seven Steeples* Mrs. Henrichsen tells how she turned from her early career of teaching to her present profession of ministering to the spiritual needs of seven Eastern Maine communities.

LEADERS in the fields of literature, government, arts, science, philosophy, and business will contribute to Colby's Convocation, April 10-13. Lectures, panels, and conferences on "The Re-discovery of the Individual" are expected to stimulate the campus to the exciting heights reached in 1953 when a similar event celebrated the move to the new campus. President Bixler and the Convocation committee, headed by Chaplain Osborne, have arranged an impressive line-up of speakers.

A coast-to-coast broadcast of the famous *America's Town Meeting of the Air*, with President Bixler participating, will launch Convocation week, Sunday evening, April 8. The Convocation will officially open April 10. Here are the distinguished speakers who will be heard:

Robert Maynard Hutchins

Former president of the University of Chicago and, since 1954, president of the Fund for the Republic (established in 1953 by the Ford Foundation), Mr. Hutchins graduated from Yale in 1921. He received his LL.B. from that institution in 1925 and, at the age of 29, was appointed as dean of the Yale Law School. A year later he accepted the presidency of the University of Chicago, a post he held from 1929-45.

During his years as president and chancellor of the University, Mr. Hutchins introduced such controversial changes as the "Chicago Plan," the Great Books program, and the minimizing of athletics.

He has been a vigilant and eloquent defender of academic freedom. Mr. Hutchins has written several books, the latest being *The University of Utopia*, 1953.

Jack Levine

A prominent American artist, Mr. Levine has had one-man exhibitions at the Downtown Gallery, the Museum of Modern Art, The Institute of Contemporary Art and the Whitney Museum of American Art in New York City and the Institute of Contemporary Art and the Mirski Gallery in Boston. He has lectured and instructed at the school of the Cleveland Museum, at Skowhegan School of Painting and Sculpture, and the Art Institute of Chicago.



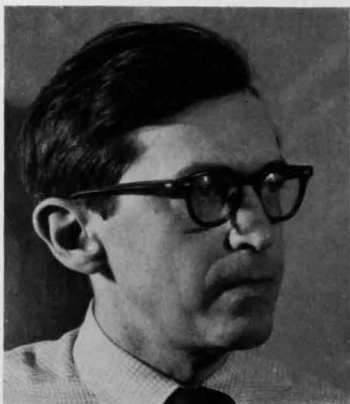
Hutchins



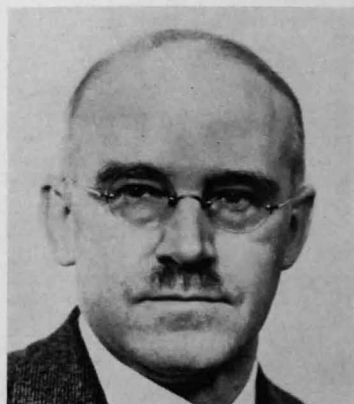
Ross

CONVOCATION

Levine



Blanshard



Mr. Levine was awarded a Guggenheim Fellowship, 1946-46, and received the American Academy of Arts and Letters Award, 1946. He studied under a Fulbright Fellowship in 1950.

Clarence B. Randall

Chairman of the Inland Steel Company, author, and special consultant to President Eisenhower in the field of Foreign Economic Power, Mr. Randall is a Phi Beta Kappa graduate of Har-

vard, 1912, and holds honorary degrees from several institutions, LL.D. degrees being conferred on him in 1954 by Brown, Keynon, Dartmouth, and Harvard.

The National Association of Manufacturers honored him in 1952 as the first recipient of its "Man-of-the-Year" award. He has received several other honors including the Captain Robert Dollar Memorial Award (1954) given by the National Foreign Trade



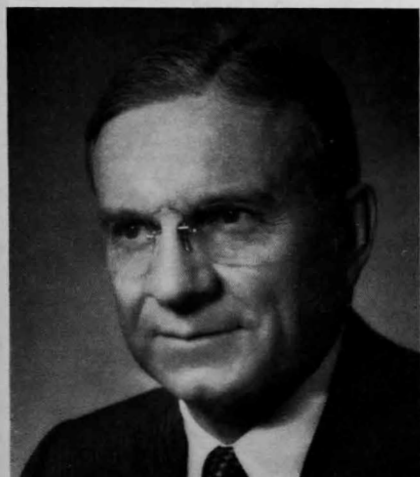
Warren



Horton

PREVIEW

Randall



Thompson



Council "for distinguished contribution to the advancement of American foreign trade" and the Freedom Foundation Honor Medal (1952) for his book *Freedom's Faith*.

Robert Penn Warren

Professor of playwriting at Yale, and widely regarded as one of the leading American poets and novelists, Professor Warren is that rare literary figure who excels in several fields.

He received his B.A. summa cum laude from Vanderbilt University and his M.A. from the University of California after which he studied at Yale for a year before going to Oxford as a Rhodes Scholar. He was appointed to the Yale faculty in 1950. On two occasions, in 1939 and 1947, he was recipient of Guggenheim Fellowships. His third novel, *All the King's Men*, won the Pulitzer Prize in 1947.

Mildred McAfee Horton

Former president of Wellesley College and former head of the Waves of the United States Naval Reserve, Mrs. Horton has a long record of service to education. A graduate of Vassar, she has taught and served in many noteworthy capacities including dean of women at both Center College and Oberlin College. She is president of the United Board of Northfield Schools and a trustee of Dana Hall School and Walnut Hill School. Her husband is dean of the Harvard Divinity School.

Hugh Ross

Conductor of the Schola Cantorum since 1929, Mr. Ross was educated at the Royal College of Music, London and at Oxford. At 17 he was made a Fellow of the Royal College of Organists, the youngest individual ever to be selected.

He has headed the choral department at the Berkshire Music Festival, Tanglewood, each summer since 1941; has been conductor of St. Secelia Women's Chorus of New York since 1942; and has directed the Marymount College Chorus since 1949. Mr. Ross has appeared as guest conductor with the New York Philharmonic, Boston, and Philadelphia Symphony orchestras and with the CBS, NBC, WOR, and BBC orchestras.

David L. Thompson

Dean of the Faculty of Graduate Studies and Research at McGill University, Professor Thompson was born in Scotland and was educated at the University of Aberdeen and at Cambridge University. He joined the McGill faculty in 1928. He has been a consultant for nutrition for the Canadian government and is author of *The Life of the Cell* as well as many scientific papers. He is a member of the National Research Council.

Brand Blanshard

Chairman of the department of philosophy at Yale University, Professor Blanshard received his B.A. degree from the University of Michigan, an A.M. from Columbia; a B.S. from Oxford; and a Ph.D. from Harvard. President of the American Philosophical Association, he is author of *The Nature of Thought* (1940) and has lectured widely in the United States and abroad.

colby folk... in the headlines

Caleb Lewis, '03
Alexander LaFleur, '20
Leon Warren, '26
Ernest Miller, '29
Bernard Johnstone, '32
John Roderick, '36
William Hughes, '41



Alexander LaFleur, 1920

ALEXANDER LAFLEUR, 1920, has announced his candidacy for the Republican nomination of governor of Maine. Mr. LaFleur has a rich background of experience in state government.

He served as a Representative from Portland to the Legislature in 1939 and 1941 and as an assistant attorney general, drafted the first Maine Civil Defense Act.

Following service with the Judge Advocate General's Department from 1942 to 1946, he resumed legal practice in Portland. He was elected attorney general for the State of Maine in 1951 and again in 1953.

Mr. LaFleur received his legal education at George Washington University, entering law school after two years' duty in World War One.

His family moved from Massachusetts to Waterville in 1907 when his father was appointed minister of the Second Baptist Church.

A major assignment in Maine's institutional set-up has fallen to WILLIAM HUGHES, 1941, who has been appointed superintendent of the State School for Boys in South Portland. The 38 year-old Marine Corps veteran of World War Two and the Korean conflict has been chief of the examination and recruitment division of the state personnel department.

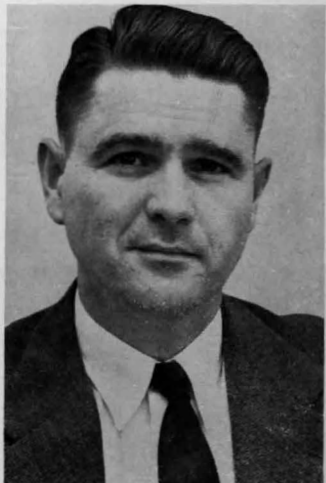
Mr. Hughes has assumed a ticklish assignment, moving into a school which has been dogged by escapes during the past year.

Prior to entering state service, he was employed as a psychologist and vocational adviser at the Veterans Administration Center at Togus. Previously he had been principal of Belgrade High School and a teacher-coach at Jay High School.

Dr. LEON H. WARREN, 1926, has been appointed an associate in the clinical investigation department of Parke, Davis & Company. Dr. Warren, a specialist in skin diseases, has been with the National Research Council for the past four years as staff officer in charge of activities of the Committee on Medicine and Surgery.

Prior to World War Two, he was engaged in clinical and biological research at the National Institute of Health on the effect of chemicals on the skin, making surveys of skin hazards in industry, and serving as consultant in industrial skin diseases.

In addition to an M.D. degree from the University of Pennsylvania School of Medicine, he holds a master's degree in medical science and a law degree, received in 1954, from George Washington University School of Law.



William Hughes, 1941

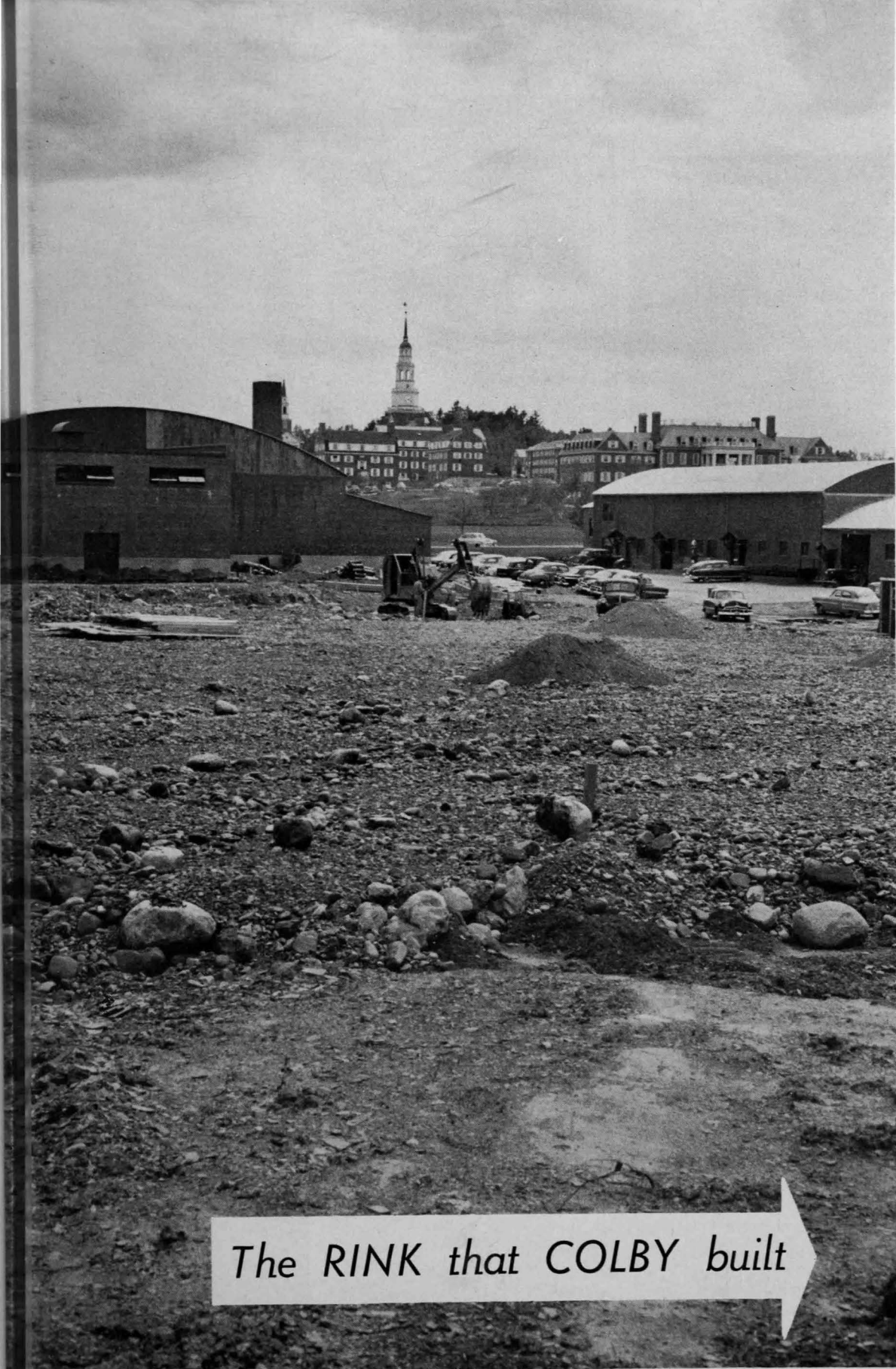
JOHN RODERICK, 1936, has been appointed chief of the Associated Press Bureau in Hong Kong. Roderick has been an AP correspondent in Southeast Asia since early in 1954, principally on the Indochina story. Except for three and one half years in the army during World War Two, he has been with the AP since 1937. He spent six months behind Red China lines, immediately after the war, as an AP correspondent. He has also worked in the Middle East and Paris and has been a member of the AP's Washington staff.

A thesis written by ERNEST MILLER, 1929, as a requirement for the Graduate School of Banking, has been selected for the libraries of the American Bankers Association at Rutgers University and the Graduate School of Business Administration at Harvard.



Leon Warren, 1926

(Continued on page 21)



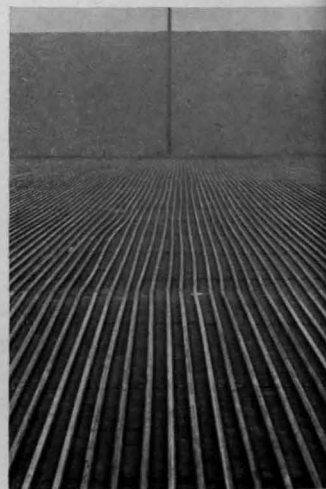
The RINK that COLBY built



The House That Jack Built of nursery rhyme fame may be better known, but *The Rink That Colby Built* is certainly way out in front in popularity.



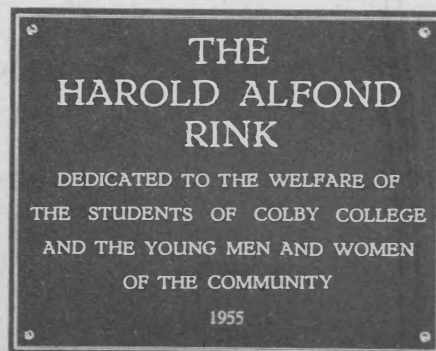
Coach Jack Kelley and hockey captain Charlie Morrissey were two of the most faithful spectators as the building took shape. The rink is attached to the back of the fieldhouse. Its floor has been covered with approximately 350 tons of Warrenite, an asphalt mixture, over which have been laid nearly 10 miles of pipes to carry the ice-making brine. Another 350 tons of Warrenite cover the pipes.





The skills and labor of the buildings and grounds staff made substantial contributions. The dasher boards, enclosing the skating surface, were constructed by college carpenters, left to right, Tom Bureau, Ray Labrack, and Ovide Hubert.

The rink was dedicated to Maine shoe executive Harold Alfond (below). Famed sportsman Walter Brown (above with President Bixler) was a featured speaker at the opening ceremonies, presided over by Waterville businessman Ronald Brown (right) who presented each speaker with a Tam O'Shanter.





THE ARENA was packed the evening of December 15 for a sparkling dedication program. There were many high-lights, but the one that will rank at the top for most was the smashing 6-1 hockey victory over Bowdoin. The evening's festivities were planned to touch on the many uses to which the new ice facilities will be put. An abbreviated pee-wee hockey game, for example, opened proceedings. An exhibition of figure skating was provided by the Lewiston-Auburn Skating Club and solo performances by 12-year old Liliette Charest and Hertha Garon Silver, European Gold Medalist. Mrs. Silver, the wife of Francis J. Silver, '51, turned in a handsome show, captivating all.

The speaking roster was many-starred, presided over by Ronald Brown, of Dunham's Clothing Store, and chairman of the Waterville Artificial Ice Rink Campaign Committee. Here are some of the headliners he introduced:

Charles Morrissey, '56, captain of hockey: "It is difficult to thank those who have contributed in time, money, and effort. Thanks must come in tangible results of having the rink here at Colby. In the final analysis the result must be a better college, a better education."

Gordon Jones, '40, representing the alumni: "It is a great night for Colby alumni as well as for students and Waterville townspeople. . . The college officials deserve a great deal of credit for completing this for approximately \$200,000. Many college rinks have been built at double this. Frankly I don't know of one superior to it."

The Honorable Richard Dubord, mayor of Waterville: "We in Waterville appreciate Colby College. We realize the cultural advantages which it gives us and the opportunity we have to enjoy many events and particularly evenings such as this. This auditorium is the latest indication of the spirit, the planning, the courage, and the fortitude that has brought Colby to Mayflower Hill. . . We welcome this splendid addition to our city."

The Honorable Sumner Sewall, (Hon. '41), representing the trustees: "When I think of the infinite spot on the horizon this whole conception was two years ago it is simply incredible, wonderfully incredible, that we are to-night in this accomplished fact. . . It seems to me the incredible is always happening here."

Walter Brown, president of Boston Garden: "No one in this building is getting a greater thrill out of this evening than I am. . . This is a wonderful building. It is only fitting of the great hockey tradition of Colby College."

Neil Leonard, chairman of the board of trustees: "This structure stands on the firm foundation of faculty, student, alumni and community loyalty. . . This rink will bear the name of a citizen of Waterville who has enriched the life of this community by giving freely of his wealth, his time, and his talents. Thayer Hospital and Colby College have been his special local interests. Because of him hundreds of youngsters are stronger, finer, citizens. . . He has made an avocation of giving young people the opportunity for a college education which he was denied. While he has been one of the most active supporters of this rink we honor him not for that alone, but for the interest he has shown in many phases of Colby activities and the community service he has rendered. As chairman of the board of trustees of Colby College, I name this building the Harold Alford Rink."

Mr. Alford answered briefly and with emotion: "I am deeply honored at having my name associated with this great college. I want to thank all the trustees and everyone else who have made tonight's occasion possible. It is one of the most thrilling moments of my life, and one I will never forget."



THE '55 ALUMNI FUND

A Proud Achievement

- ✓ Highest number of contributors, 2926
- ✓ Highest percentage of graduate contributors, 47%
- ✓ Highest number of new contributors, 377

Contributors to the COLBY 1955 ALUMNI FUND

- Class agent names are printed in bold.
- An asterisk indicates contributor is deceased.
- An (R) indicates contributions for 10 consecutive years.

1882 Robie G. Frye (R) In memory of Fred Fletcher Total Living Alumni 1 Contributors 3 Amount \$235	1884 Melville C. Freeman (R) In memory of Annie Richardson Barnes Clara P. Morrill (R) Frances H. Morrill (R) Grace M. Reed (R) Clarence E. Tupper (R) William B. Tuthill (R) No. in Class 1 Contributors 1 Amount \$40	1886 Samuel B. Shepard No. in Class 1 Contributors 1 Amount \$40	1887 Dudley W. Holman No. in Class 3 Contributors 1 Amount \$10	1888 In memory of Harvey D. Eaton (R) Walter B. Farr In memory of Joel Larrabee (R) Elmer E. Parmenter (R) *Charles C. Richardson (R) No. in Class 3 Contributors 5 Amount \$28	1888 Albert F. Drummond (R) William M. Cole (R) *Edith Merrill Hurd (R) Walter D. Stewart No. in Class 6 Contributors 4 Amount \$145	1889 Minnie Bunker (R) Harriet M. Parmenter (R) No. in Class 4 Contributors 2 Amount \$1,046	1890 Charles W. Spencer (R) Mary N. McClure (R) Antha Knowlton Miller (R) In memory of Melvin M. Smith No. in Class 5 Contributors 4 Amount \$340	1891 Franklin W. Johnson (R) Effie Dascombe Adams (R) Mary Morrill Hilsley (R) Edwin D. McArthur No. in Class 7 Contributors 4 Amount \$120	1892 R. Adelle Gilpatrick (R) Frank B. Nichols (R) *Dora Knight Andrews (R) In memory of Charles F. Barnes Ernest F. Osgood *George W. Singer Stephen Stark (R) In memory of Herbert E. Wadsworth No. in Class 7 Contributors 8 Amount \$71.50	1893 Albert F. Robinson (R) Denise E. Bowman (R) Leon O. Glover (R) Eva Taylor MacKenzie (R) Robert N. Millett (R) Lucia H. Morrill (R) In memory of George Otis Smith In memory of Grace Coburn Smith In memory of John F. Wood No. in Class 9 Contributors 9 Amount \$131	1894 Melville C. Freeman (R) In memory of Annie Richardson Barnes Clara P. Morrill (R) Frances H. Morrill (R) Grace M. Reed (R) Clarence E. Tupper (R) William B. Tuthill (R) No. in Class 17 Contributors 7 Amount \$62.50	1895 *Archer Jordan (R) Emma A. Fountain (R) Lila Harden Hersey (R) Reed V. Jewett In memory of Archer Jordan M. Blanche Lane (R) Annie M. Waite (R) William L. Waters (R) No. in Class 8 Contributors 8 Amount \$178	1896 Florence E. Dunn (R) H. Warren Foss (R) Myrtice Cheney Berry (R) Albert S. Cole (R) Edna Moffatt Collins (R) Henry W. Dunn (R) Herbert E. Foster (R) C. Benjamin Fuller (R) Everett L. Getchell Carleton E. Hutchinson (R) John B. Merrill (R) Herbert N. Pratt (R) Christine Miller Tooker (R) No. in Class 18 Contributors 13 Amount \$1,832.50	1897 Grace Gatchell (R) Arthur J. Duntun Alice Nye Fife (R) In memory of Edith Hanson Gale Minnie Corson Garland (R) Alena Hanscom Hill (R) Harriet F. Holmes (R) Marion Parker Hubbard (R) In memory of Elmira Nelson Jones Albert R. Keith (R) Lena Tozier Kennick (R) Edith M. Larrabee (R) Tate McCollum (R) Fred M. Mansur Florence L. Morrill Herbert S. Philbrick (R) Grace Goddard Pierce (R) In memory of Ruth Stevens Reed Fannie Parker Wing (R) No. in Class 23 Contributors 18 Amount \$288	1898 Lenora Bessey (R) T. Raymond Pierce (R) Fred G. Getchell (R) Mabel Humphrey Hall Everett C. Herrick (R) Arad E. Linscott (R) In memory of John E. Nelson Arthur H. Page Fred P. H. Pike (R) Frank A. Robinson Mary Evans Stephenson (R) Ina Taylor Stinneford (R) Everett S. Trengrow Charles W. Vigue (R) No. in Class 27 Contributors 14 Amount \$377	1899 Ambrose B. Warren (R) Edith Corson Bowman (R) Wirt Brown Jennie M. Buck (R) Harold L. Hanson (R)	Bertha Weston Hutchinson Ernest H. Maling (R) Maude Hoxie Martin (R) Etta Purington Parsons Ralph H. Richardson Charles E. G. Shannon (R) Henry R. Spencer (R) Helene Bowman Thompson (R) William L. Waldron Rachel Foster Whitman (R) No. in Class 26 Contributors 16 Amount \$447	1900 Ethel M. Russell (R) Louise M. Benson (R) Ernest T. Cushman Mary Philbrook Dunning (R) Simon P. Hedman Stella Jones Hill (R) Grace B. Holden (R) Mary Lemont Ingraham (R) Fred F. Lawrence (R) Nella M. Merrick (R) In memory of Frank J. Severy Charles F. Towne (R) Gertie Pike Towne (R) Ernest H. Tupper (R) Lu Ames Ventres No. in Class 20 Contributors 15 Amount \$332.50	1901 Mary Blaisdell Belknap Alexander M. Blackburn Jennie W. Cummings (R) William F. Hale Frances Simmons Houghton Grace Farrar Linscott (R) George A. Marsh (R) Rhena Clark Marsh (R) Edgar B. Putnam (R) Ralph W. Richards (R) Charles F. T. Stevens (R) Lucinda Peacock Smith (R) Margaret Williams Thomas Ernest E. Ventres Mary Bragg Weston (R) No. in Class 22 Contributors 15 Amount \$449.50	1902 Blanche Pratt Pratt (R) Edith Williams Small (R) E. Howard Bennett Florence Wilkins Bragdon (R) Lew C. Church (R) Augusta Colby (R) Edna Owen Douglass (R) Grace Bicknell Eisenwinter (R) William Farwell (R) Bertha Thayer Flint Elizabeth Penney Floyd Angier L. Goodwin (R) Allana Small Krieger Vera Nash Locke (R) Max P. Philbrick Harry E. Pratt (R) Charles A. Richardson (R) Nellie Lovering Rockwood (R) In memory of Willard H. Rockwood George S. Stevenson (R) Marjorie Elder Stevenson (R) Ossian F. Taylor Linwood L. Workman (R) No. in Class 32 Contributors 23 Amount \$313	1903 Allison M. Watts Harold C. Arey Grace Warren Atchley (R) Edith C. Bicknell (R)	*Bertha Wiley Chase (R) Florence Dixon (R) Mildred Jenks Dudley Walter L. Glover (R) Florence Perry Hahn William H. Hawes Martha B. Hopkins (R) Allen M. Knowles Caleb A. Lewis (R) In memory of Alice Pierce Norris Eva Johnson Patten (R) Elydia Foss Shipman (R) Lois Hoxie Smith (R) E. May Tolman No. in Class 25 Contributors 18 Amount \$368	1904 Eva Clement Ames (R) Carl R. Bryant (R) Vernon S. Ames (R) Eunice Mower Beale (R) Edith Watkins Chester (R) Allen Clark (R) Jennie M. Cochrane (R) William A. Cowing Ruby Carver Emerson (R) Louis A. Hammond Bertha Long Hanscom Mary Berry Manter Clarence G. Morton Harriet Cleveland Nason (R) Lillian Berry Newton John A. Partridge (R) In memory of Carroll N. Perkins Emma Clough Peterson Arthur G. Smith Edward B. Winslow (R) Frank E. Wood No. in Class 32 Contributors 21 Amount \$503	1905 Cecil W. Clark (R) David K. Arey (R) Alona Nicholson Bean (R) Stephen G. Bean (R) Ethel Higgins Beck William R. Cook (R) Elizabeth Blaisdell Dolan Arthur L. Field (R) Eleanor Stone Goodwin Sarah Gifford Gray *Walter J. Hammond (R) May L. Harvey (R) William Hoyt (R) Henry N. Jones (R) Ida Phoebe Keen Hersey R. Keene (R) Rose Richardson Kelley (R) Thomas T. Knowles Alton I. Lockhart Mary Moor Lord Effie Lowe Patch (R) Glenn W. Starkey (R) In memory of Carr Allen Wood No. in Class 32 Contributors 23 Amount \$535	1906 Anna M. Boynton (R) Arthur G. Robinson (R) Adelbert Babin (R) Charles P. Chipman (R) Edwin P. Craig Rex W. Dodge Karl R. Kennison (R) Elliott C. Lincoln Ella E. Maxcy (R) Charles N. Meader (R) Elaine Wilson Oxnard (R) Beulah F. Purington (R) Ralph L. Reynolds (R) *William H. Rowe Cora Farwell Sherwood William H. S. Stevens Joseph N. Teague Susan H. Weston (R) Nettie Fuller Young (R) Christia Donnell Young	No. in Class 36 Contributors 20 Amount \$616.50	1907 Millard C. Moore (R) Ellen J. Peterson (R) Myron E. Berry (R) In memory of Adelaide Holway Brown *Walker E. Craig (R) Sarah S. Cummings In memory of Lewis W. Dunn Roscoe C. Emery Caro Beverage Faulkner In memory of Hattie S. Fossett In memory of Burr F. Jones Rayford C. Lidstone Alma Morrisette McPartland Marian Learned Meader (R) Alice Tyler Milner Bertha E. Nead In memory of Martha Hedman Peterson In memory of Oscar B. Peterson Nellie Winslow Rideout (R) Charles A. Rush Arthur W. Stetson (R) In memory of Rena Archer Taylor Luella Hall Teague Perley L. Thorne (R) In memory of Elihu B. Tilton Bertha Robinson Wheeler In memory of Edith Priest Whitten Ralph B. Young (R) No. in Class 31 Contributors 28 Amount \$372	1908 Charles W. Bradlee (R) Florence King Gould (R) Emmons P. Burrill Helen L. Cochrane (R) Myra Little Davies Helen F. Dickinson (R) Philip H. Dunbar Charles C. Dwyer (R) Caroline Noyes Ervin Percy S. Farrar John E. Hatch Nina Holmes Herschleb John F. Hyde Victor Ray Jones Ernest W. Loane Frank W. Lovett I. Ross McCombe Harold N. Mitchell (R) Mollie Pearce Putnam (R) Ninetta M. Runnals (R) Helen Campbell Shaw (R) Malcolm D. Smith (R) *Mary Abbott Stobie (R) Agnes Walker Taylor (R) Howard A. Tribou Annie Harthorn Wheeler No. in Class 56 Contributors 26 Amount \$520.50	1909 Thomas J. Seaton (R) *Maude Eaton Wadeigh Helen E. Adams (R) Eugene F. Allen Joseph Chandler (R) Claz Stevenson Hallenbeck Jeannette S. Crowell Clara A. Eastman (R) Bertha Bryant Farwell Blanche Emory Folsom Leon S. Gilpatrick Wallace E. Hackett Claz Stevenson Hallenbeck Myra I. Hardy June Philbrick Jones Martha Bryant Kelly
--	--	--	---	---	--	--	--	---	--	--	--	--	--	---	---	--	---	--	---	---	--	--	---	--	--	--	--	---	--

Harold W. Kimball (R)
Marion Wadsworth Long
Edwin W. Merrill
Nelson I. Mixer
Agrandee Record Pullen

Austin Shaw (R)
Ethel Knowlton Siedhof

Ella MacBurnie Stacy (R)
Pearl Davis Steffenson (R)
Florence Freeland Totnan
Leo S. Trask
Abbie Hague Warren (R)
Nathaniel E. Wheeler (R)
John D. Whittier
Sarah B. Young (R)

No. in Class 53
Contributors 31
Amount \$409.50

1910

Ralph N. Good (R)
Alton D. Blake
Merle Crowell (R)
Mary Donald Deans (R)
Emma Berry Delahanty
Leona Achorn Gillis (R)
Chester A. Grant (R)
Grace Whittier Greene
Jennie Grindle Grindle
Ruth Wood Hebler
J. Pauline Herring (R)
Frederick T. Hill (R)
Verena Chaney Hornberger
Lillian L. D. Lowell (R)
Thomas L. Mahany (R)
Eleanor Creech Marriner (R)

John M. Maxwell
Henry B. Moor (R)
Helen V. Robinson (R)
John A. Tidd (R)
No. in Class 36
Contributors 20
Amount \$468.50

1911

Albion W. Blake (R)
Rose Carver Tilley (R)
Margaret Hare Buck
Robert L. Ervin (R)
Helen Warren Cummings
Isaac Higginbotham (R)
*Sinia King Leach
Rose Pillsbury LeBlanc

Ralph E. Nash (R)
Minnie Fernald Page
Ellen Cratty Paine
Nathan R. Patterson (R)
Gladys Simpson Perry
Horace M. Pullen
Margaret Fielden Rogers

Louise A. Ross (R)
Hazel Cole Shupp
In memory of
Edward G. Stacy
Eva LaCasce Walker
Beulah E. Withee (R)
Leta Young
No. in Class 45
Contributors 21
Amount \$518

1912

John P. Dolan (R)
Thomas S. Grindle (R)
Ruth Hamilton Whittemore

Leslie B. Arey
Rita Robinson Blodget
Mildred Ralph Bowler (R)
Margaret Skinner Burnham
Albert E. C. Carpenter (R)
Samuel C. Gates
Wilford G. Chapman (R)
Ernest H. Cole (R)
Jennie Reed Dixon (R)
Harold E. Donnell
In memory of
Eva Reynolds Dunbar
Clayton E. Eames
Elmer D. Gibbs (R)
Grace Vose Grupe
Ethel V. Haines (R)
Roger K. Hodson
Ernest D. Jackman
Sarah Snow Jellison (R)
Florence Carl Jones (R)
Laurel Wyman Keppel
J. Elliott May (R)
Jessie Ross Murchie (R)
Margaret Buswell Nash

Elsie Gardiner Pierson
Leora E. Prentiss
In memory of
Walter J. Rideout

Lillian Carl Schubert (R)
Carl R. Smith
Freda A. Snow (R)
Maud Collins Stevens
Bess Cummings Walden
Emma Leighton Walden

Mary Strickland Ward
Marguerite Record

In memory of
Alpheus L. Whittemore
No. in Class 88
Contributors 38
Amount \$615.50

1913

Marian Ingalls Hague (R)
Ernest C. Marriner (R)
Mathea Windell Allen (R)
Margaret Adams Austin
Clair F. Benson (R)
Dora Libby Bishop (R)

*Laurence Bowler (R)
Crary Brownell
Robert F. Fernald
Diana Wall Fogler (R)
John H. Foster (R)
Phyllis St. Clair Fraser
Victor Gilpatrick
John C. Goldthwaite
Pauline Hanson (R)
James L. Howe
Elmer H. Hussey (R)
Phillip W. Hussey (R)
John P. Kennedy (R)
Eva Macomber Kyes (R)
Clara Winslow Moldenke
Merroe F. Morse (R)
C. Granville Reed
Clarence A. Small
Chester C. Soule (R)
Iva B. Willis
Ada Waugh Young (R)

Anonymous
No. in Class 73
Contributors 28
Amount \$606.79

1914

Frank S. Carpenter (R)
Lillian Fogg Randall
Joseph P. Burke (R)
Marjorie Meader Burns (R)
Edith Washburn Clifford

Robert E. Colomy
Eugene K. Currie
Lena Cushing
Annie Dudley Douglas
F. Harold Dubord (R)
Idella K. Farnum
Emmons B. Farrar
Blanche C. Farrington
Helen Thomas Foster (R)
Laura Danforth Gagnon
Frank T. Gillingham
Myron A. Griswold
Raymond I. Haskell
Marjorie Scribner Holt (R)
Mabelle H. Hunt
Adelaide Klein Jackman
Roscoe E. Johnson
Frank H. Jones
Louise Jose
Mabel Bynon McDaniel (R)
Aubra S. McDougal
Stanley B. Miller (R)
Wilmer A. Mooers (R)
Marston Morse (R)
George G. Newton
Emily Hanson Obeare
Eva Pratt Owen
Robert E. Owen
Gladys Paul (R)
George W. Perry (R)
James Phair
J. Franklin Pineo (R)
Clara Collins Piper (R)
Henry Gay Pratt
Erma V. Reynolds
Thomas J. Reynolds
Edward A. Simoneau
Harry B. Smith
Vinal H. Tibbets
William A. Tracy
Harry E. Umphrey
Ernest L. Warren (R)
Lois Peacock Warren (R)
Milroy Warren (R)
Louis A. Wilson (R)
Chester F. Wood

No. in Class 102
Contributors 51
Amount \$1,882.50

1915

Thomas J. Crossman
Aldine C. Gilman (R)
Floridan G. Arey
E. Mildred Bedford
Ralph A. Bramhall (R)
Harold S. Campbell

Marguerite M. Chamberlain
Jennie Farnum Collins
Arthur J. Cratty
Leon W. Crockett (R)
Ruth. Whitman Cushing
Robert R. Decormier
Prince A. Drummond
Vivian M. Ellsworth (R)
Thomas W. Farnsworth

In memory of
Paul F. Fraser
Roy W. Gillmore
Ruth Goodwin
Leonard W. Grant (R)
Helen N. Hanson
Mildred Holmes
Everett G. Holt
Merle F. Hunt (R)
Roland B. Hutchins
Charles H. Jones
Marion Steward LaCasce

John R. LaFleur
Carl B. Lord
Ina M. McCausland
Leslie F. Murch (R)
Hazel Ross Pomroy
Ruth Brickett Rideout
Marguerite Robinson
Ray D. Robinson
May Sargent
Merle Bowler Stetson
Raymond R. Thompson (R)
A. Ruth Trefethen
Myrtle Everett Waite
Mary A. Washburn (R)
Lester F. Weeks (R)
Evelyn S. Whitney
Earl M. Woodward
Lizzie Howland Waldron
Ray C. Young
No. in Class 97
Contributors 45
Amount \$702.50

1916

Edith Pratt Brown (R)
Ella R. Robinson (R)
Crawford A. Treat (R)
Hubert H. Barker
Elizabeth Hodgkins Bowen

Loren F. Carter
Marion Miller Chase (R)
Alice A. Clarkin
Philip G. Curtis
Carroll E. Dobbin
Franklin M. Dyer
Hazel Fletcher Eaton
Henry A. Eaton
Frank C. Foster
Arthur E. Gregory
Marion Harmon
John N. Harriman
Samuel J. Hartley (R)
Leon D. Herring (R)
Vivian Skinner Hill
Robert A. Hussey
Cyril M. Joly (R)
Ralph Kolseth
Hazel N. Lane
Lewis Lester Levine (R)
Norman W. Lindsay
Louise McCurdy MacKinnon

Peter J. Mayers
Eleanor Bradley Mitchell
Lucy Montgomery Newell
Malcolm B. O'Brien
Ernestine H. Porter
Donald E. Putnam (R)
John M. Richardson
Edith C. Robinson
Katharine Moses Rolfe
William C. Schuster
Marion Wyman Sim
Lois Osgood Skillin
Byron H. Smith
Esther French Spaulding

*Lyman I. Thayer
Carolyn Stevens Thompson
Frances E. Trefethen
Maude Huckins Webster
Bert Wise
No. in Class 110
Contributors 46
Amount \$1,051

1917

Edward D. Cawley (R)
Francis E. Heath (R)
Selma Koehler (R)
Lucy M. Allen
Harriet Canham Alley
Mildred Greeley Arnold (R)
Harold S. Brown
Hazel Robinson Burbank
Elmer W. Campbell

Helen D. Cole (R)
Harold M. Crockett
Flora Norton Dexter (R)
Foster Eaton
John F. Everett (R)
Grace A. Farnum
Donald B. Flood (R)
Hazel M. Gibbs (R)
Myrtle Aldrich Gibbs
Harold E. Hall (R)
William M. Harriman (R)
Madelyn Daggett Haskell
Maurice B. Ingraham (R)
Thomas F. Joyce
Leonora A. Knight (R)
Elsie M. Lane (R)
Andrew C. Little (R)
Thorvald B. Madsen
Evie Learned Miller
Lillian Tuttle Morse
Phoebe Vincent Parker
Frederick A. Pottle (R)
Lucy Taylor Pratt (R)
Charles B. Price
E. Donald Record
A. Raymond Rogers
Cecil A. Rollins (R)
Irma M. Ross (R)
Hazel Durgin Sandberg (R)
Leonard A. Shea (R)
Marion White Smith (R)
Ralph N. Smith (R)
John A. Stockwell (R)
Vivien Small Sullivan
Ruth Murdock Thayer
Mark R. Thompson
Donald W. Tozier (R)
Annie F. Treworgy
C. Wallace Lawrence (R)
Nathaniel Weg (R)
Daniel B. Whipple
Paul G. Whittemore (R)
Mildred Greene Wilbur (R)
Oliver C. Wilbur (R)
Winifred Atwood Wilbur

Grace Fletcher Willey (R)
Lester E. Young (R)
No. in Class 98
Contributors 56
Amount \$1,116.21

1918

Howard G. Boardman (R)
Carleton M. Bailey
Helene R. Buker (R)
Alberta Shepherd Marsh

Mary Jordan Alden
Paul E. Alden
Hazel E. Barney
Merrill A. Bigelow (R)
Marian Lewis Blackman
Helen Kimball Brown
Warren S. Churchill
Phyllis F. Cole (R)
Violet French Collins
Florence Eaton Davis
Elizabeth R. Fernald
George E. Ferrell (R)
Robert H. Gallier
Norma H. Goodhue (R)
Winifred Greeley
Wallace G. Hastings
Jennie Sanborn Hasty
Roy M. Hayes
Margaret Wilkins Hickman

Howard F. Hill
Frank J. Howard
Marion Horne Hunt (R)
Frederick K. Hussey
Mollie Treat King
Harris B. McIntyre
E. Bliss Marriner
Harvard E. Moor
Kathryne Sturtevant Moore
Alfred H. Patterson (R)
Charles H. Piebes
Marion Starbird Pottle (R)
Dorothy I. Roberts (R)
Hugh L. Robinson (R)
Violet Shaw Scott (R)
Margaret Perkins Seller
Hazel Whitney Snowe (R)
Pauline Windsberg Thall
Paul A. Thompson (R)
Gladys P. Twitchell (R)
Leila M. Washburn (R)
Lucille Rice Wheeler
Raymond C. Whitney (R)
Daisy Murray Wilson
Elwood A. Wyman (R)
In memory of
Eunice Chase Wyman
No. in Class 100
Contributors 49
Amount \$896

1919

Burton E. Small (R)
Phyllis Sturdivant Sweetser
Katharine Hatch Burrison

Lillian Pike Chick
E. Reginald Craig
Ira E. Creelman
Mildred Dunham Crosby
Marion Griffin Demuth
Mira L. Dolley (R)
Ralph H. Drew (R)
Wentworth V. Driscoll
Gordon E. Gates
Helen Baldwin Gates
Miriam Adams Harmon
Lincoln Heyes
Helene Blackwell Humphrey

George E. Ingersoll (R)
Hildegard Drummond
Leonard (R)
Everett S. Marshall (R)
Raymond H. Merrill
Beatrice Bowler Nelson
Marion Campbell Newton
Newton L. Nourse (R)
Mary Ann Foss Ogden (R)
Alice Barbour Otis (R)
Matilda Titcomb Pavey (R)
Harriet Eaton Rogers
Emily Kelly Russell
Martha Gregory Shibles

John W. Stinson (R)
Robert E. Sullivan (R)
Julius G. Sussman (R)
Galen F. Sweet
Mary A. Titcomb (R)
Vernon H. Tooker (R)
Grace Lermond Wyllie
Sidney P. Wyman
No. in Class 90
Contributors 37
Amount \$595

1920

Phinehas P. Barnes (R)
Stella Greenlaw Thompson

Pauline Higginbotham Blair
Raymond O. Brinkman (R)
John W. Brush (R)
Elliott E. Buse (R)
Rudolph E. Castelli
John F. Choate
Ula Orr Clark
Lillian Dyer Cornish
Daniel M. Crook
Alice Bishop Drew (R)
Anna McLaughlin Fallon
Raymond Giroux
Mabel McCausland Grant
Harriet Sweetser Greene
Merrill S. F. Greene
Myron C. Hamer
Perley L. Hanscom
Ralph K. Harley (R)
Donald G. Jacobs
M. Lucile Kidder
Alexander A. LaFleur
Alice L. Mathews
Ernest L. McCormack (R)
Gladys Chase Nixon
Harold A. Osgood
Raymond S. Owen
Retta Carter Pinchbeck (R)
Esther M. Power
Alfreda Bowie Rand
Elsie McCausland Rich (R)
Carl W. Robinson (R)
Everett A. Rockwell
George R. Skilkin
Hugh A. Smith (R)
Clarence A. Tash (R)
Lucy O. Teague
Daniel P. Tozier
Earle S. Tyler
H. Thomas Urie (R)
Charles E. Vigue
Robert E. Wilkins (R)
Ruth E. Wills
James L. Wilson
Marion Waterman Wood

Madge Tooker Young
No. in Class 88
Contributors 47
Amount \$848.50

1921

William E. Burgess
Irene Gushee Moran (R)
William J. Pollock (R)
Ransom Pratt (R)
Alice Clark Anderson
Thelma French Arnold (R)
Stephen H. Ayer (R)
Paul H. Bailey
Laura V. Baker (R)
H. Merle Barnum (R)
Helen Hodgkins Berry
Stanley R. Black (R)
Arthur J. Brimstone (R)
Paul L. Brooks (R)
Alice LaRoque Brown (R)
Chauncey L. Brown (R)
A. Edward Brudno (R)

Elizabeth Whipple Butler (R)	Mildred Smiley Wing	Ronald W. Sturtevant (R)	Jennie L. Nutter	Caroline Heald Wallace
Dorothy Knapp Child	No. in Class 96	Ralph Talberth	Marguerite L. O'Roak (R)	Elizabeth Alden Wassell
Marion L. Conant (R)	Contributors 51	Cecilia Simpson Thyng	Clifford R. Packard	Faith D. Waterman
Gladys Dow Daskam	Amount \$1,085.70	Marion Drisko Tucker (R)	Carroll S. Parker (R)	Robert M. Waugh
Clark Drummond (R)	1923	Gren E. Vale	Ellis F. Parmenter	Marion Sprowl Williamson
William C. Dudley	A. Galen Eustis (R)	Merle Rokes Waltz	Olive Soule Parmenter	No. in Class 156
Smith Dunnack (R)	John R. Gow (R)	Mildred Todd Weir	Herschel E. Peabody	Contributors 76
Bernard E. Esters (R)	Gertrude Fletcher Lowery (R)	Fred M. Weiss	Edith Greason Sheelan (R)	Amount \$774.77
Olive Edgerly Fortier	Myrtle Swain Andrews	James A. Wilson	George E. Roach (R)	1928
Grace B. Foster (R)	Casper J. Azzaara	A. Hilda Worthen	Marian B. Rowe (R)	Ava Dodge Barton
Charles G. Gately	Reta Wheaton Belyea	No. in Class 116	Doris Garland Russell (R)	Amy D. Dearborn (R)
Adelle McLoon Germano	Arthur L. Berry (R)	Contributors 49	Nela G. Sawtelle (R)	E. Richard Drummond (R)
Grace Johnson Grant (R)	Frederick D. Blanchard	Amount \$569	Elvira Royle Schaub	Margaret Davis Farnham
Everett H. Gross (R)	Arlene Ringrose Brown	1925	Abbott E. Smith	Augustus M. Hodgkins (R)
Merle Davis Hamilton	Helen A. Brown	Nellie Pottle Hanks (R)	Kenneth J. Smith (R)	A. Frank Stiegler, Jr. (R)
Geraldine Baker Hannay	Thomas A. Callaghan (R)	Clayton W. Johnson	James B. Sprague	Irma Sawyer Andrews
Arthur A. Hebert	Elliott F. Chase	Eva L. Alley	Clifton W. Stevens	Roland B. Andrews
Charles R. Hersum	Avis Cox Colby	Coburn H. Ayer	Roger A. Stinchfield	Ralph H. Ayer
Frank J. Hois	Mildred R. Collins	Carleton E. Bennett	Claude L. Stinneford	Nelson W. Bailey
D. Ray Holt (R)	J. Russel Coulter	Elsie Adams Blakely	Hope Chase Stinneford	Meade J. Baldwin
Hazel Peck Holt (R)	Helen Williams Cushman	Mildred E. Briggs (R)	John S. Tibbetts (R)	Louise Baud
Neil Leonard (R)	Helen L. Davis	Alfred K. Chapman	Carroll D. Tripp	George P. Bernhardt
Lewis Levine (R)	Lucy Osgood Dean (R)	H. Forrest Colby	Albert W. Wassell (R)	Rose Black
Nathan N. Lowell	Eleanor Hawes Dempsey	Claire A. Crosby	Doris Keay Wood	True Hardy Boothby
Bernice Butler McGorrill	Edythe Porter Dunstan	Amy Robinson Cumming	Eather E. Wood (R)	Everett O. Champlin (R)
Wayne E. McNally (R)	J. Leslie Dunstan	Lloyd M. Dearborn	Madeline Woodworth	Helen Merrick Chandler
H. C. Marden (R)	Marcia Davis Esters	Perrin N. Freeman	Herbert McC. Wortman (R)	R. Chandler
Philip H. Merchant (R)	Stanley C. Estes (R)	Herman Glassman	Josie Rich Wright	Donald F. Cobb
Arthur R. Mills	Marlin D. Farnum (R)	Ethel Mason Goetz	Leslie H. Wyman	Cornelia Adair Cole (R)
Isabel Genther Misto	Melva Mann Farnum (R)	Joseph P. Gorman	Mollie Seltzer Yett (R)	Frances Bragdon Cone
Esther Blanchard Nicoll	Frederick G. Fassett (R)	Raymond S. Grant	No. in Class 140	C. Stanley Corey (R)
Frederick J. Pope (R)	Norman W. Foran	William W. Hale	Contributors 71	Esther Parker Crosman (R)
Doris Gower Potter	Edward R. Frude (R)	Flora M. Harriman	Amount \$1,527	A. A. D'Amico (R)
Libby Pulsifer (R)	Wendell F. Grant	Edith Gray Havice	1927	Nellie M. Dearborn (R)
Mary Margaret Rice (R)	L. Armand Guite	Doris Hardy Haweeli (R)	Clyde E. Riley (R)	Edmond F. Fiedler
Ashton F. Richardson (R)	Gertrude Weller Harrington	Robert H. Hawkins, Jr.	Theodore G. Smart (R)	Cecil E. Foote (R)
John Riker	Edith Weller Juchter	Theodore R. Hodgkins (R)	Barbara Fife Stearns	Louis P. Fourcade
Dorothy Rounds	E. Stanley Kitchen	Grace McDonald Jones	Carl A. Anderson	Nathaniel M. Gallin
Vernon G. Smith (R)	Elizabeth B. Larrabee (R)	Seymour J. Koff	Joseph K. Anderson (R)	Lela H. Glidden (R)
Raymond Spinney (R)	Lillian Cyr Laverdiere	Ralph M. Larrabee	Florence Plaisted Ayer	Lawrence W. Gould
Reginald H. Sturtevant	Merton E. Lavery	Margaret White McGowan	Barbara Whitney Beatty	Helen Wyman Gould
Joel E. Taylor, Jr. (R)	N. Roy Lenville	Edith W. Manning	Dorothy Farnsworth	Katherine B. Greaney
Elva C. Tooker (R)	Marguerite Starbird Lunt	Edward H. Merrill (R)	Sylvia V. Brazzell	Douglas C. Greason (R)
Catherine A. Tuttle (R)	Clarence R. Lyond	Earl L. Merriman	Stanley C. Brown	Elwood J. Hammond (R)
John B. Tschamler	Helen Dresser McDonald	Ellsworth W. Millett (R)	James C. Bruno (R)	In memory of
Milford I. Umphrey (R)	Eleanor Wilkins McCarthy	Alice McDonald Mills	W. Preston Cadwallader	Theodore E. Hardy
Roland G. Ware	Hiram F. Moody (R)	Donald J. Mills	Wenonah Pollard	George Hawes
Clara Carter Weber (R)	Velma Briggs Moores	Edward T. Monahan	John E. Candeler	Dorothy Daggett Johnston
Samuel Wolman	Alvin Newman Norwood	Elsie Bishop Nichols	John E. Candeler	Martin M. Keats
Clara Gamage Woodbury	George J. Odom (R)	William F. Powers	John E. Candeler	Walter F. Knofskie
No. in Class 108	Roland N. Pooler (R)	Doris Tozier Putnam	J. Ardelle Chase (R)	Arthur B. Levine
Contributors 67	Marian Drisko Powers	Verne E. Reynolds (R)	Leola M. Clement	Arthur W. Littlefield (R)
Amount \$1,715	Harland R. Ratcliffe (R)	Arthur O. Rosenthal (R)	Kenneth R. Copp (R)	W. Robert Lombard
1922	Forrest M. Royal (R)	Charles W. Shoemaker	Ralph H. DeOssy	J. Lewis Lovett (R)
William F. Cushman (R)	Ida Jones Smith (R)	Russell M. Squire (R)	Marjorie G. Dunstan	Nathan R. Lufkin
Bertha Gilliat Moore	Louise L. Steele	Ethel Childs Storer (R)	Evelyn M. Estey	Harriet Towle McCroary
Asa C. Adams	Louise K. Tilley	Sylvester R. Sullivan (R)	Ena True Farwell	James T. McCroary (R)
Vina Parent Adams	John P. Tilton (R)	Howard B. Tuggee	Helen Smith Sawcett (R)	Ruth M. McEvoy (R)
Eleanor C. Bailey	Thelma Powers Walker	Ellen Smith Weiblen	Ralph F. Flavie	Vance L. McNaughton
Raymond J. Bates	Mary E. Warren	Carleton F. Wiley	Erna Wolfe Fullerton	P. Kenton MacCubrey
Marguerite Craig Beach	Clifford O. T. Wieden	Phyllis Bowman Wiley	Perley C. Fullerton (R)	Leo W. MacDonald
Virginia M. Bean	Ernest R. Werme	No. in Class 127	Rose Seltzer Gahan	Albert F. MacDougal (R)
Walter D. Berry	Leonette Warburton	Contributors 48	Dorothy Giddings (R)	Claire Richardson
Ashley L. Bickmore	Doris E. Wyman	Amount \$1,092	Frances Tweedie Giroux	MacDougal (R)
Avis Barton Bixby	No. in Class 122	1926	Fayalene Decker Goodman	Clyde L. Mann (R)
Julia Hoyt Brakewood (R)	Contributors 59	Pauline Lunn Chamberlin	Sybil Williams Grindle	Evelyn Ventres Mariner
Mary Brier	Amount \$936	(R)	Dorothy I. Hannafor	Elizabeth Lewis Marsh
Walter G. Chamberlin	Ervena Goodale Smith (R)	Harry B. Thomas (R)	James J. Harris	Janet Chase Melanson
Leslie H. Cook	Joseph C. Smith (R)	George B. Barnes (R)	Caroline Rogers Hawkes	Louise Ades Merriman
Dorothy M. Crawford (R)	John A. Barnes (R)	In memory of	Alan J. Hillan	Donald H. Millett (R)
Kenneth C. Dolbeare	Percy G. Beatty (R)	Francis F. Bartlett	Helen Pollard Hodgkins	Charles P. Nelson
Elizabeth Dyar Downs (R)	Theodore C. Bramhall (R)	Ruby Shuman Berry (R)	Mabel Root Holmes	Edward R. Newhall (R)
Bernice Strout Fortier	Martha Marden Briggs (R)	Agnes Osgood Blake	Robert C. Hunt	John F. O'Brien
Charles H. Gale	Alice Manter Brown	F. Christine Booth	Herbert C. Jenkins (R)	Lawrence A. Peakes (R)
Edwin W. Gates	Meyer Chafetz	Kenneth W. Bragdon	C. Evan Johnson	Viola M. Phillbrook
Ruth Banghart Greenleaf	George M. Davis	Alpha Crosby Brown (R)	Archer Jordan, Jr.	Margery M. Pierce (R)
Miriam Hardy	Ethel Reed Day	Helen E. Davis	Henry J. Kaufmann	Myra Stone Pruitt
Robert M. Jackson	John G. Early	Beatrice Ham Dickerman	James C. LaGrue	Edna Cohen Rapaport
Dorothy White Lamoreau	Samuel R. Feldman (R)	Donald H. Dunphy	Percy Levine (R)	In memory of
Catherine D. Larrabee	Dorothy M. Gordon	Paul M. Edmunds (R)	Maurice W. Lord	John Ricci
Merle F. Lowery (R)	Harry J. Greene (R)	Hilda M. Fife (R)	Marguerite Chase Macomber	Roland M. Robichaud
Annie Burgess Lumsden	Grace Fox Herrick	Susan McGraw Fortune	William A. Macomber (R)	Cecil H. Rose
Helen Raymond Macomber	Doris Cole Hunter	Madeline Merrill French	Maynard W. Maxwell	Daniel J. Shanahan
Arthur B. Malone	Robert L. Jacobs, Sr. (R)	William E. Garabedian	Philip S. Metcalf	Roy V. Shorey
Leonard W. Mayo	Cranston H. Jordan	Doris Roberts Gates	Helen C. Mitchell	Alberta Van Horn Shute
Walter T. Moreland	Charles S. Lewis	Lyde E. Getchell	George L. Mittelsdorf	Sydney P. Snow
Edna Chamberlain Nelson	Carolyn Hodgdon Libbey	J. Frank Goodrich (R)	Helen Stone Mittelsdorf	Ruth Hutchins Stinchfield
Irwin S. Newbury (R)	William J. McDonald	Emily Heath Hall (R)	Albert U. Peacock (R)	Arthur Thayer (R)
Charles J. Paddock (R)	Ralph D. McLeary	F. Clive Hall (R)	Arline Mann Peakes	Albert J. Thie (R)
Chester L. Robinson	Marion Cummings Mann	James H. Halpin	Greely C. Pierce (R)	Grace Morrison Thompson
Clyde E. Russell (R)	Lena Cooley Mayo	George F. Hodgkins	William E. Pierce, Jr.	Ruth M. Tilton
Lorena E. Scott	J. Harland Morse	Doris Dewar Hunt	Ralph F. Prescott	Charles E. Towne (R)
Evan J. Shearman (R)	Marion Brown Newcomb	Norton Rhodes	Norton Rhodes	John A. Trainor
H. Theodore Smith	George T. Nickerson	Priscilla Russell Richards	In memory of	Edna E. Turkington (R)
Robert L. Stone	Ruth Allen Peabody	In memory of	Karl Rood	Ellis L. Vines
Arthur J. Sullivan (R)	Frank R. Porter	Miriam Rice Schulze (R)	Paul Seiderman	Susie Stevens Watson (R)
M. Anne Sweeney	Anne Brownstone Prilutsky	Esther Knudsen	Graci Heffron Smith	George C. West (R)
Annie Choate Sweet	Lawrence A. Putnam	Muriel Thomas Squire (R)	F. Clement Taylor (R)	Clair Wood
Henry D. Teague (R)	Katrina Hedman Ranney	Richard P. Staunton (R)	Fred L. Turner (R)	No. in Class 167
Hazel Dyer Town (R)	Noel J. Raymond (R)	Fred L. Turner (R)	Lura Norcross Turner (R)	Contributors 86
Gladys Briggs Walker	Richard C. Sackett			Amount \$1,080
William J. Wallace	Albert H. Scott (R)			1929
Mary I. Whitcomb	Evangeline York Scott (R)			Lillian Morse Henry
Hugh C. Whittemore	Arthur H. Snow (R)			Charles W. Jordan (R)
				Alice Paul Allen (R)



TOUCHDOWN CLUB

All contributors whose gifts equalled or exceeded \$100 have been enrolled as members of the Touchdown club. Their names are listed below:

In memory of

George G. Averill
Dr. & Mrs. J. Seelye Bixler
Frederic E. Camp
Mr. & Mrs. Harry Kisloff
Dr. Warren Kershner
Mr. & Mrs. Martin M. Landay
Sumner T. Pike
Mary Curtis Zimbalist
In memory of
Fred N. Fletcher '82
Robie G. Frye '82
Albert F. Drummond '88
Minnie Bunker '89 ✓
Antha Knowlton Miller '90 ✓
Franklin W. Johnson '91
William L. Waters '95 ✓
Florence E. Dunn '96
Henry W. Dunn '96 ✓
Myrtice Cheney Berry '96 ✓
Edna Moffat Collins '96 ✓
Minnie Gallert Mayer '97 ✓
Herbert S. Philbrick '97 ✓
T. Raymond Pierce '98
Fred G. Getchell '98 ✓
Etta Pwington Parsons '99 ✓
Ernest H. Maling '99 ✓
Henry R. Spencer '99 ✓
Ethel M. Russell '00
In memory of
Frank J. Severy '00
Charles F. T. Seaverns '01
Edgar B. Putnam '01 ✓
Elydia Foss Shipman '03 ✓

In memory of

Carroll N. Perkins '04
David K. Arey '05
Cecil W. Clark '05
Anna M. Boynton '06
Karl R. Kennison '06 ✓
Elaine W. Oxnard '06 ✓
Ellen N. Peterson '07
Victor Ray Jones '08 ✓
Harold N. Mitchell '08 ✓
Frederick T. Hill '10
Ralph E. Nash '11
Nathan R. Patterson '11
Margaret Buswell Nash '12
John A. Foster '13 ✓
Philip W. Hussey '13 ✓
Anonymous '13
Frank S. Carpenter '14
Helen Thomas Foster '14
Harry E. Umphrey '14
Mibroy Warren '14 ✓
Lois Peacock Warren '14 ✓
Ralph A. Bramhall '15
Leslie F. Murch '15 ✓
Leon D. Herring '16 ✓
Lewis Lester Levine '16
Eleanor Bradlee Mitchell '16 ✓
Edward D. Cawley '17
Flora Norton Dexter '17
Francis E. Heath '17
Selma Koehler '17
Warren Churchill '18 ✓
George E. Ferrell '18
Charles H. Piebes '18 ✓

Newton L. Nourse '19
Raymond O. Brinkman '20 ✓
Robert E. Wilkins '20
Paul H. Bailey '21 ✓
Stanley R. Black '21 ✓
D. Ray Holt '21
Hazel Peck Holt '21
Neil Leonard '21
Ludy Levine '21
William J. Pollock '21
Ransom Pratt '21
Libby Pulsifer '21
Reginald H. Sturtevant '21
Leslie H. Cook '22
Catherine D. Larrabee '22 ✓
J. Russel Coulter '23 ✓
A. Galen Eustis '23
L. Armand Guite '23 ✓
Hiram F. Moody '23 ✓
Joseph C. Smith '24
Perrin N. Freeman '25
Theodore R. Hodgkins '25
Ellsworth W. Millett '25
Arthur O. Rosenthal '25
In memory of
Francis F. Bartlett '26
Samuel Feldman '26
Hilda M. Fife '26
Paul W. Kates '26 ✓
Harry B. Thomas '26
Albert U. Peacock '27
A. A. D'Amico '28
E. Richard Drummond '28
Augustus M. Hodgkins '28 ✓
Donald B. Tupper '29
Barbara Libby Tozier '30
George H. Sterns '31 ✓
James E. Fell '32 ✓
Nissie Grossman '32
Carleton D. Brown '33
R. Leon Williams '33
William E. Huckle '34 ✓
Morton M. Goldfine '37
Wilson C. Piper '39 ✓
Earl Wade '39
Halsey M. Frederick '40 ✓
Muriel Carrell Philson '42
Frederick W. LeVeque '51 ✓
Edward M. Guild, Jr. '52 ✓
Folkert Belzer '53 ✓

W. Thornton Cowing (R)
James E. Davidson (R)
William B. Downey
Dexter E. Elsemore (R)
Lucile Whitcomb Elsemore (R)

John Florena
Leroy S. Ford
In memory of
Charles M. Giles
Frank Giuffra
Ralph L. Goddard (R)
Arlene Williams Goodrich
Margaret Mooers Hatch
G. Gilbert Henry
Karl R. Hines (R)
Pauline Morin Howlett
Ralph B. Hurlburt
Lewis W. Jackins
Gerald A. Johnson (R)
Gordon N. Johnson
Isa Putnam Johnson
Michael J. Karter
Lewis H. Kleinholz
John K. Livingston
Philip Lloyd-Ely
Robert B. Lunt
Edgar B. McKay
Miriam Sanders Marcho
Charles F. Martin
Pauline Smith Mayhew
Mary Rollins Millett (R)
Albert C. Palmer (R)
Norman D. Palmer
Ralph A. Pape
Helen Chase Pardey (R)
Ovid F. Pomerleau
Thomas A. Record
Kenneth E. Robinson
Frances E. Thayer (R)
Ernest J. Theberge
Rena Mills Theberge
Bernard C. Shaw
Margaret Hale Shaw
William H. Stinneford
Mary Petke Summers
Harriet Johnston Titcomb
Barbara Libby Tozier (R)
Wendell A. Tufts
Nathan Tupper
Allen Turner
Jean Macdonald Turner
Mary K. Wasgatt
Charles W. Weaver (R)
Stanton S. Weed
Eleanor Hathaway Williams
Edith M. Woodward
No. in Class 156
Contributors 79
Amount \$792.50

1931

Thelma Chase Bevin
Roderick E. Farnham (R)
Marvin S. Glazier (R)
Doris Spencer Wallis
Ethel MacDougall Alemian
George P. Allen
Myrtle Paine Barker (R)
Phyllis Fisher Brewster
Henry C. Bubar
Isabel H. Clark
Edward S. Cobb
Louise Mulligan Collins
Mary Cadwallader
Combella (R)
Barbara Hamlin Cummings
Alanson R. Curtis
Faith Rollins Davidson (R)
John S. Davidson (R)
Louise Murray Deans
Stephanie Bean Delaney
Wallace A. Donovan (R)
Orville J. Edes
Frances Page Egan
Robert B. Eldredge
Arthur B. Esty
Arlene Woodman Evans
Helen Ramsey Felt
Howard L. Ferguson
Gordon K. Fuller
Alexander R. Gillmor
Hope Pullen Gillmor
In memory of
Louise Grearson Haley
Malcolm M. Hare
Beulah Stiles Harris (R)
Edward F. Hayde
Barbara Heath
Anne Macomber Holden (R)
Eunice Foye Hutchins
Barbara Gurney Jones
Thomas B. Langley
Frances E. Libby
Barney H. Lipman
Lucius V. Lobdell (R)
John C. McCoy, Jr.
Muriel MacDougall Lobdell (R)
Edward U. MacConnie
Eleanor Hilton Martin (R)
William C. Martin (R)
Jennie Dunn Millett (R)

Grace Stone Allen (R)
J. Drisko Allen (R)
Everett W. Bell (R)
Florence Young Bennett
E. Richard Benson (R)
Neal D. Bousfield (R)
Joseph B. Campbell (R)
J. Stone Carlson
Oscar M. Chute
Murray A. Coker
Sylvia D. Crane
Ola Swift Dacey
Dorothy E. Deeth
Virginia Dudley Eveland
Harvey C. Fotter
G. Cecil Goddard (R)
Vinal G. Good
Philip R. Higgins (R)
Martha Holt Hines (R)
Richard P. Hodsdon
Everett H. Holmes
Gilman S. Hooper
Eleanor Butler Hutchins (R)
Dorothy Wilson Irvine

Rupert M. Irvine
John D. Jones
David E. Kronquist (R)
Lowell P. Leland (R)
F. Elizabeth Libbey (R)
Doris Wyman Lord
Lemuel K. Lord
Elizabeth Marshall Lynn
Clifford J. McGaughy (R)
Ruth Norton McKay
Earle A. McKeen
Corona Hatch MacRae
Edwin D. Merry
Herbert D. Messenger
Ernest E. Miller (R)
Kenneth R. Miller
Murray B. Miller
John W. Miner
Harold R. Moskovit
John T. Nasse (R)
Barbara Weston Noyes
Warren R. Payson
Robert A. Peterson
Flora Rideout Philbrook

Rodolphe J. F. Pomerleau
Norris W. Potter
Rosalie Mosher Reynolds (R)
Sophie Reynolds
Ruth Plaisted Robinson
John E. Rogers, Sr.
Ruth Bartlett Rogers
Robert W. Scott (R)
Mayo A. Seekins
Mark R. Shibles
Fred J. Sterns (R)
Allan J. Stinchfield
Thomas Tranfaglia
Donald B. Tupper (R)
Irene Hersey Tuttle
Bertil A. Uppvall (R)
John E. Walker (R)
Jean M. Watson
Dorothy Woods
Beatrice Miller Young
No. in Class 182
Contributors 71
Amount \$773

1930
Deane R. Quinton (R)
Pauline Brill Trafton (R)
Phil Allen
Donald E. Allison
Alice Houghton Bagley
Pauline Bakeman
Forrest M. Batson (R)
Philip S. Bither (R)
Helen Baker Bosworth
Beth Beckett Bousfield (R)
Robert P. Brown (R)
Evelyn Maxwell Bubar
Barbara Taylor Cahill
Hazen A. Calhoun
Beatrice Mullen Campbell
Edvia V. Campbell
John A. Chadwick
Lindon E. Christie
Helen Paul Clement
Lucy Parker Clements
In memory of
Lawrence D. Cole
Philip Constant
Aaron Cook

Margaret McGann Merrill Florence Burrill Muir Winona Berrie Mullen Richard W. Noyes F. Donald Poulin (R) Roland J. Poulin Jean Littlefield Powers Evelyn Haycock Quinton (R)	Marion Clark Harmon Bertrand W. Hayward Gladys Averill Heubach Norma Fuller Hurst Isabelle Miller Hutchinson Dana A. Jordan Raymond O. Knauff (R) Myron J. Levine Howard I. Libby, Jr. (R) Irving M. Malsch James E. Poulin (R) Ruth Pullen Vesta Alden Putnam (R) Lillian Shapiro Reardon (R)	Laurance E. Dow Ellen Dignam Downing Albion L. Farnham Melvin O. Flood Ray Gardner Elizabeth Lavallee Gilbert Leo F. Haggerty (R) Wilma Stanley Hill (R) Ann Trimble Hilton David R. Hilton John W. Hunt Dana W. Jaquith Reba E. Jose Milton P. Kleinholz Theophile S. Krawiec (R) Maurice Krinsky (R) Floyd F. Ludwig Grace Wheeler Marsh Eugene A. McAlary Kathryn Herrick McCrodden	1937 Hildreth Wheeler Finn Morton M. Goldfine (R) Romeo L. Lemieux Ruth Yeaton McKee Joel Allen Dorothy Smith Brown Pearl Hoyt Coffin Wilfred J. Combella (R) Sara J. Cowan (R) Margaret Libbey Darlow Pauline Walker Deans William D. Deans Marcia Duoba Edith E. Emery (R) Roland I. Gammon James E. Glover Dorothy W. Goodwin (R) Edith Ellis Guerrieri Barbara Frazee Haynes (R) Eleanor Ross Howard (R) Harold Hurwitz Kenneth A. Johnson Kermit S. LaFleur Ruth Walden Ludwig Ralph A. Macdonald Esther L. Marshall (R) Abbie Hooper Morrison Marjorie Gould Murphy Stanley A. Paine Paul K. Palmer (R) Frederick K. Poulin Mima Robertson Rider Lewis E. Rush Elizabeth Wilkinson Ryan Michael G. Ryan Lillian Stinchfield Salmon Wayne B. Sanders Janet Goodridge Sawyer (R)	Leroy N. Young No. in Class 178 Contributors 57 Amount \$402.25	
Alice Linscott Roberts (R) Wayne E. Roberts (R) Florence Ventres Sherburne In memory of Marjorie Dearborn Small Clayton F. Smith George F. Sprague (R) George H. Sterna (R) Marion White Thurlow (R)	William M. Terry Ruth Leighton Thomas Tillson D. Thomas Louise Smith Veltin (R) Raoul H. Violette Robert K. Walker Howard E. Watson Arthur T. Wasserman Ruth Weston (R) Otis W. Wheeler (R) Ethel Bragg Williams (R) R. Leon Williams (R) William M. Wilson (R) Perry G. Wortman No. in Class 157 Contributors 59 Amount \$595	John R. Merrick Virginia Moore Clarence A. Morrill Richmond N. Noyes Ralph O. Peabody Bettina Wellington Piper Elbridge B. Ross Elinor Chick Ross Richard S. Sawyer (R) Beulah Bennett Sayle Virginia Swallow Seepe Gordon P. Thompson In memory of Myra Whittaker Barbara Howard Williams Ralph S. Williams Ruth Wheeler Wood Jewell F. Wortman The Class of 1935 No. in Class 144 Contributors 52 Amount \$452	1939 Elizabeth Solie Howard (R) Virginia Kingsley Jones (R) Lester Jolovitz C. Bertrand Rossignol Kenneth G. Stanley Freda K. Abel Sally Aldrich Adams Phyllis Rose Baskin James Beaton Ruth Pike Berry George F. Bonner Robert S. Borovoy (R) Edward S. Boulos, Jr. Leon J. Brady (R) Eleanor Bavis Broughton Leland C. Burrill Robert V. Canders (R) Philip Charbonneau Leverett H. Deveber Charles L. Dignam Clarence E. Dore Elliot H. Drisko (R) Fletcher Eaton Helen Carter Guptill Nathanael M. Guptill (R) Donald J. Hauser Gilbert E. Hutchinson Marion Crawford Hutchinson		
Ina Hussey Weymouth Richard D. Williamson John H. J. Wisnoski No. in Class 155 Contributors 67 Amount \$595	1932 Thompson D. Grant (R) Thomas Johnston Hayward (R) Albert E. Acierio Douglas B. Allan (R) Jane C. Belcher Marjorie Van Horn Bernier James Blok Barbara Sherman Burger William H. Caddoo (R) Stanley L. Clement John B. Curtis Phyllis Farwell Curtis William S. Curtis, Jr. Fulton E. Daniels John DeMiceli (R) Harvey B. Evans (R) James E. Fell (R) Dorcas Paul Frost Estelle Taylor Goodwin (R) Nissie Grossman (R) Louise Dyer Hall Myron M. Hilton Talbert B. Hughes, Jr. Justina Harding Jenkins Evelyn Platt Johnson (R) Bernard M. Johnstone Frederick R. Knox Harold F. Lemoine (R) Alex Lindholm Robert C. McNamara G. Alden Macdonald Samuel H. Marder Dolores Dignam Morgan Frank E. O'Neil Ruth Brown Peabody Maurice E. Pearson (R) Norman C. Perkins (R) H. Parkes Pinson Tina Thompson Poulin Henry W. Rollins (R) Viola Rowe Rollins Marion Richardson Snow Morten Sorensen William H. Steinhoff Connel H. Terry Philip C. Thibodeau Clinton F. Thurlow (R) Gwendolyn Mardin Trefethen Phyllis Hamlin Wade Phyllis C. Weston No. in Class 146 Contributors 50 Amount \$772	1934 Mary L. Buss Franklin Norvish (R) Portia Pendleton Rideout (R) Arthur W. Stetson, Jr. (R) John M. Alden Robert F. Allen Abner G. Bevin Pauline Goodwin Boone Selwyn I. Braudy Louise Williams Brown William T. Bryan William J. Chapman Greta Murray Connors Rowena Loane Cooper Edward W. Cragin (R) Lois B. Crowell (R) Andrew G. Daigle Ella Gray Dearborn Ruth Stubbs Estes Paul E. Feldman Samson Fisher (R) Hamilton B. Grant Curtis M. Havey (R) John P. Holden (R) William H. Huckle George H. Hunt Ernest F. Lary Ann Duoba Lawrence Robert M. MacGregor Margaret Salmon Myron H. Matz William H. Millett Peter Mills Barbara White Morse (R) Eleanor Wheelwright Ness Frances M. Palmer Virginia Haight Parker Harriet Pease Patrick Arnold S. Peabody Woodrow W. Peabody Preston W. Pennell Harold M. Plotkin Mary Ellen Hodgson Prescott (R) Ruth Handley Price George T. Pugsley George C. Putnam (R) Leslie R. Rhoda John H. Sawyer Sybil Wolman Smith Frederick A. Schreiber No. in Class 134 Contributors 50 Amount \$579.50	1936 Kathryn Caswell Abbott Charles J. Caddoo Nancy D. Libby (R) Robert W. Sparkes Annette Tebbetts Audette Arthur W. Bartel, 2nd Edna F. Bailey (R) Hugh D. Beach Jeanette Benn Beebe Anita Thibault Bourque Catherine Laughton Briggs Arthur O. Brown Katherine Rollins Brown Robert O. Brown George J. Cranston George H. Crosby (R) Herbert W. DeVeber (R) Saxon Lurvey DeWolfe John P. Dolan (R) Grace Robinson Durfee Millard E. Emanuelson Edmund N. Ervin (R) Raymond W. Farnham (R) Edythe Silverman Field Ruth Fuller Frost Charles R. Geer Milton M. Gilson Elizabeth Thompson Goodspeed Agnes Carlyle Hadden Kathryn Davis Harper Alice Boquel Hartwell (R) Floyd M. Haskell Cleot Tillie Henderson Harold W. Hickey Jeanne Peyrot Hoffman George H. Holbrook Victor J. Judson Harold W. Kimball, Jr. Eleanor Manter LeMaistre Ruth Michalek McAlary Wallace B. McLaughlin Ruth Millett Maker (R) Oliver C. Mellen Katherine Franklin Merrill Elizabeth Miller Lewis I. Naiman Leon B. Palmer (R) Albert O. Piper John F. Reynolds Dorothy Gould Rhoads (R) Ernest J. Roderick James L. Ross (R) Roberta Ryan Ryan (R) Phyllis Carroll Sandquist Emma-Mary Small Schlossberg Gordon W. Schumacher Ruth Mailey Sutherland Howard O. Sweet (R) Amy H. C. Thompson Dorothy Cunningham Vendetti Eleanor MacCarty Whitmore No. in Class 160 Contributors 61 Amount \$473	1938 Arnold E. Small Leo M. Seltzer Hazel Weffer Thayer (R) Mary Ewen Ulrich Alfred H. Wheeler Henry V. Wilcox Emery P. Worthen Whitney Wright Gordon S. Young Lucille Pinette Zukowski No. in Class 134 Contributors 45 Amount \$483.75	
Elizabeth Swanton Allan (R) Marian Archer MacDonald John L. Skinner Bertha Lewis Timson (R) Barbara Johnson Alden Arthur R. Austin Rosamond F. Barker Edith Hoskin Bolster Vernon L. Bolster (R) Leon A. Bradbury Carleton D. Brown (R) Velma A. Brown David S. Cary Frances Perkins Cary (R) Evelyn Brackley Chadbourne Dorris Moore Cox J. Robert Curtis William P. Darrin Marguerite deRochemont John N. Dexter Dorothy Dingwall Emery S. Dunfee Carl F. Foster Anna Hannagan Furbush Averill D. Gellerson Nancy Nivison Hamilton (R)	1933 J. Warren Bishop (R) Edward J. Gurney, Jr. (R) Margaret Jordan (R) Carroll W. Abbott George H. Anderson (R) Leo Barron Donald M. Bither Norman H. Bowley Joseph W. Brodgen Hope Bunker (R) Ruth Thelma Chaplin (R) Beth Thelma Clark Morris Cohen (R) Robert W. Colomy 1935 J. Warren Bishop (R) Edward J. Gurney, Jr. (R) Margaret Jordan (R) Carroll W. Abbott George H. Anderson (R) Leo Barron Donald M. Bither Norman H. Bowley Joseph W. Brodgen Hope Bunker (R) Ruth Thelma Chaplin (R) Beth Thelma Clark Morris Cohen (R) Robert W. Colomy	1935 John R. Merrick Virginia Moore Clarence A. Morrill Richmond N. Noyes Ralph O. Peabody Bettina Wellington Piper Elbridge B. Ross Elinor Chick Ross Richard S. Sawyer (R) Beulah Bennett Sayle Virginia Swallow Seepe Gordon P. Thompson In memory of Myra Whittaker Barbara Howard Williams Ralph S. Williams Ruth Wheeler Wood Jewell F. Wortman The Class of 1935 No. in Class 144 Contributors 52 Amount \$452 1936 Kathryn Caswell Abbott Charles J. Caddoo Nancy D. Libby (R) Robert W. Sparkes Annette Tebbetts Audette Arthur W. Bartel, 2nd Edna F. Bailey (R) Hugh D. Beach Jeanette Benn Beebe Anita Thibault Bourque Catherine Laughton Briggs Arthur O. Brown Katherine Rollins Brown Robert O. Brown George J. Cranston George H. Crosby (R) Herbert W. DeVeber (R) Saxon Lurvey DeWolfe John P. Dolan (R) Grace Robinson Durfee Millard E. Emanuelson Edmund N. Ervin (R) Raymond W. Farnham (R) Edythe Silverman Field Ruth Fuller Frost Charles R. Geer Milton M. Gilson Elizabeth Thompson Goodspeed Agnes Carlyle Hadden Kathryn Davis Harper Alice Boquel Hartwell (R) Floyd M. Haskell Cleot Tillie Henderson Harold W. Hickey Jeanne Peyrot Hoffman George H. Holbrook Victor J. Judson Harold W. Kimball, Jr. Eleanor Manter LeMaistre Ruth Michalek McAlary Wallace B. McLaughlin Ruth Millett Maker (R) Oliver C. Mellen Katherine Franklin Merrill Elizabeth Miller Lewis I. Naiman Leon B. Palmer (R) Albert O. Piper John F. Reynolds Dorothy Gould Rhoads (R) Ernest J. Roderick James L. Ross (R) Roberta Ryan Ryan (R) Phyllis Carroll Sandquist Emma-Mary Small Schlossberg Gordon W. Schumacher Ruth Mailey Sutherland Howard O. Sweet (R) Amy H. C. Thompson Dorothy Cunningham Vendetti Eleanor MacCarty Whitmore No. in Class 160 Contributors 61 Amount \$473	1938 Robert N. Anthony Marion E. Dugdale (R) Lawrence W. Dwyer (R) Harry K. Hollis (R) Dorothy Levis Alford Priscilla Cram Allen Joseph G. Antan Edith L. Barron Alfred W. Beerbaum Kenneth R. Bickford L. Russell Blanchard Calvin T. Butler Cecil M. Daggett, Jr. John W. Danforth Joseph D. Dobbins Charles R. Dolan Richard W. Dow Frederick C. Emery Mary Herd Emery James Fox Ernest M. Frost Josephine Bodurtha Gagnon (R) Alonzo H. Garcelon Edward H. Gleason Bertha Norton Gordon Martha Bessom Gorman W. Linwood Haynes (R) W. Kenneth Holbrook Edward M. Hooper Helen Lewis Hooper Eliot S. Irving Helen Foster Jenison Edwin M. Leach Lawrence C. Lightner Edward W. Lombard Robert V. McGee Charles A. Macgregor Lucile E. McClintock Paul B. Merrick Jean Cobb Murrill Elizabeth Oliver John S. Pullen Frank A. Record (R) Walter B. Rideout (R) Elizabeth Herd Sanders Carleton N. Savage (R) Helen Wade Sawdon Marjorie Rollins Snyder J. Marble Thayer (R) Sigrid E. Tompkins Maynard C. Waltz (R) Margaret Higgins Williams Robert S. Winslow Harold M. Wolman Barbara Hurd Worthen Louise Weeks Wright	1940 Louis Sacks (R) Dwight E. Sargent Judith C. Schreider Stanley H. Schreider Jean Burr Smith Marjorie Towle Stinchfield Raymond D. Stinchfield Arlene Bamber Veracka (R) Earl L. Wade No. in Class 166 Contributors 50 Amount \$578	

Julia Wheeler O'Sullivan
Caroline Piper Overfors
Elizabeth Walden Palmer

(R)
Ellen Fitch Peterson
Edna Slater Pullen
William A. Small
Roger M. Stebbins
Ruth Gould Stebbins
Philip A. Stinchfield
Conrad W. Swift (R)
William D. Taylor, Jr.
Alleen Thompson
Arthur T. Thompson
Patricia Thomas Thompson
Ruth Blake Thompson
Leon Tobin
Constance L. Tilley
Marjorie Day Weeks
Elizabeth C. Westcott
Linwood L. Workman, Jr.

No. in Class	176
Contributors	60
Amount	\$529

1941 Hartley A. Bither Barbara Partridge Dyer

(R)
Hoover R. Goffin (R)
Mary Robinson Taylor
Henry W. Abbott, Jr. (R)
Jane Russell Abbott (R)
Elizabeth Sweetser Baxter
Elmer L. Baxter (R)
Mary Hitchcock Baxter
George L. Beach, Jr.
Sidney Brick
Jean Pearson Burr
James A. Daly
Mildred Van Valkenburg
Norris E. Dibble
Vernelle W. Dyer, Jr.
Alta M. Estabrook
Alta Gray Feddeman (R)
James J. Foster
J. Joseph Freme
Virginia Moore Fremon
Diana Wiesenthal Friedman
Catharine P. Fussell
Stanley Gruber
Abdo Hassan
Ruth Roberts Hathaway
William H. Hughes
Geraldine Stefk Jones (R)
Irving Kanovitz
Allan R. Knight
Hiram P. Macintosh
Ada Vinecour Mandell
Prudence Piper Marriner

(R)
Dorothy Emerson Martin
Edgar P. Martin
Howard Miller
Warren H. Mills
Virginia B. Mosher
Ruth Lewis Nowlan
John E. Ormiston
Linwood C. Potter
Ruth Scribner Rich
Maurice D. Rimpo
Robert C. Ryan
Virginia Ryan
Louis Salhanick
Alison Pike Slade
Willetta McGrath Snow
Doris Peterson Stanley
Wendell T. Starr
Ruth R. Stebbins
Stephen S. Sternberg
Herbert D. Sterns (R)
George J. Stumpp
Shirley Porton Thrope
Edwin A. Toolis
B. Stephen Topalian
Lubov Leonovich Waltz
Barbara Kaighn Warner
C. Ward Webber
Joanna MacMurtry

(R)
George W. Young
No. in Class 155
Contributors 62
Amount \$470
Charles A. Lord
Muriel Carrell Philson (R)
Lewis E. Weeks, Jr.
Mary Anacki
William E. Barta, Jr.
Dorris Heaney Batt (R)
Arthur G. Beach, Jr.
Martha Rogers Beach
Suzanne Rose Bessey
Robinson D. Burbank
Clifford F. Came, Jr. (R)
William R. Conley

1942
Charles A. Lord
Muriel Carrell Philson (R)
Lewis E. Weeks, Jr.
Mary Anacki
William E. Barta, Jr.
Dorris Heaney Batt (R)
Arthur G. Beach, Jr.
Martha Rogers Beach
Suzanne Rose Bessey
Robinson D. Burbank
Clifford F. Came, Jr. (R)
William R. Conley

Muriel Howe Delano
Richard R. Dyer
Jane Soule Engert
Dorothy Smith Fernald
Emanuel K. Fruman
Olive Monell Gifford (R)
Ann Jones Gilmore
Milton W. Hamilt
Bettie Jewett Hayes
Eero R. Helin (R)
Harry L. Hicks, Jr.
Barbara R. Holden
Max A. Holzrichter
Harold L. Huntoon
Mary Elizabeth Jones
James F. Kavanaugh
Ruth Crowell Knight (R)
Alton G. Laliberte (R)
Victor A. Lebednik
Arthur B. Lincoln, Jr.
Edward F. Loring
Jean Cannell MacRae (R)
Weston MacRae (R)
Lena E. Marsh (R)
Eleanor Cornish Martin
Florence Perkins Mignery
Saul Millstein
Albert Newell
Linwood E. Palmer
George A. Parker, Jr.
Walter M. Pejko
J. Franklin Pineo, Jr.
Anna Fisher Plantinga
Joseph Richard Rancourt
Robert S. Rice (R)
Priscilla George Ross (R)
Ruth Wolfe Schreiner
Esther Goldfield Shafer
Betty Anne Royal Spiegel
John E. Stevens
John L. Thomas, Jr.
Marion B. Thomas (R)
Edith Curtis Townsend
Theodora Wright Weston
Priscilla Hathorn White
Betsey Libbey Williams
Beatrice Sosnowitz Wofsey
No. in Class 206
Contributors 59
Amount \$460

1943
James W. Moriarty (R)
Hilda Niehoff True (R)
James W. Bateman
Hubert S. Beckwith
Elizabeth Field Blanchard
Jeannette Nielsen Braddock
Thomas R. Braddock (R)
Eleanor Smart Braumnüller
Leonard Caust
Elizabeth Tobey Choate
Kathleen Monaghan Corey
In memory of
Harold A. Costley
Robert C. Dennison (R)
Priscilla Moldenke Drake
Anne Dunmore
Natalie Cousins Dyer
Patricia Ford Ellis
Ethel Paradis Emerson
Thomas W. Farnsworth, Jr.
A. Thomas Ferris
William Finkeldey
Madeleine Hinkley Gibbs
Leslie H. Graffam
Lawrence S. Gurney
Marion Treglowan Hamilton
Charlotte Arey Hoppe
Calvin K. Hubbard (R)
Howard R. Johnson
Justin O. Johnson, Jr.
Jeanice Grant Keese
Anita Pooler Laliberte
Ruth Henderson Leckie
Ronald D. Lupton
James R. McCarrall
Frank J. Miselis (R)
Ruth Graves Montgomery
Leonard L. Osier
Geraldine Fennessy Parker
George A. Popper (R)
Marjorie Brown Pursley
Thomas A. Pursley
Sidney J. Rauch
Richard L. Sawyer
J. Kenneth Shepard
Lyndon A. Small
John M. Stillwell, Jr.
Andrew Watson
Donald C. Whitten
Alice Lyman Young
No. in Class 157
Contributors 49
Amount \$332.50

1941
Hartley A. Bither
Barbara Partridge Dyer
Hoover R. Goffin (R)
Mary Robinson Taylor
Henry W. Abbott, Jr. (R)
Jane Russell Abbott (R)
Elizabeth Sweetser Baxter
Elmer L. Baxter (R)
Mary Hitchcock Baxter
George L. Beach, Jr.
Sidney Brick
Jean Pearson Burr
James A. Daly
Mildred Van Valkenburg
Norris E. Dibble
Vernelle W. Dyer, Jr.
Alta M. Estabrook
Alta Gray Feddeman (R)
James J. Foster
J. Joseph Freme
Virginia Moore Fremon
Diana Wiesenthal Friedman
Catharine P. Fussell
Stanley Gruber
Abdo Hassan
Ruth Roberts Hathaway
William H. Hughes
Geraldine Stefk Jones (R)
Irving Kanovitz
Allan R. Knight
Hiram P. Macintosh
Ada Vinecour Mandell
Prudence Piper Marriner
Dorothy Emerson Martin
Edgar P. Martin
Howard Miller
Warren H. Mills
Virginia B. Mosher
Ruth Lewis Nowlan
John E. Ormiston
Linwood C. Potter
Ruth Scribner Rich
Maurice D. Rimpo
Robert C. Ryan
Virginia Ryan
Louis Salhanick
Alison Pike Slade
Willetta McGrath Snow
Doris Peterson Stanley
Wendell T. Starr
Ruth R. Stebbins
Stephen S. Sternberg
Herbert D. Sterns (R)
George J. Stumpp
Shirley Porton Thrope
Edwin A. Toolis
B. Stephen Topalian
Lubov Leonovich Waltz
Barbara Kaighn Warner
C. Ward Webber
Joanna MacMurtry
George W. Young
No. in Class 155
Contributors 62
Amount \$470

1942
Charles A. Lord
Muriel Carrell Philson (R)
Lewis E. Weeks, Jr.
Mary Anacki
William E. Barta, Jr.
Dorris Heaney Batt (R)
Arthur G. Beach, Jr.
Martha Rogers Beach
Suzanne Rose Bessey
Robinson D. Burbank
Clifford F. Came, Jr. (R)
William R. Conley
Muriel Howe Delano
Richard R. Dyer
Jane Soule Engert
Dorothy Smith Fernald
Emanuel K. Fruman
Olive Monell Gifford (R)
Ann Jones Gilmore
Milton W. Hamilt
Bettie Jewett Hayes
Eero R. Helin (R)
Harry L. Hicks, Jr.
Barbara R. Holden
Max A. Holzrichter
Harold L. Huntoon
Mary Elizabeth Jones
James F. Kavanaugh
Ruth Crowell Knight (R)
Alton G. Laliberte (R)
Victor A. Lebednik
Arthur B. Lincoln, Jr.
Edward F. Loring
Jean Cannell MacRae (R)
Weston MacRae (R)
Lena E. Marsh (R)
Eleanor Cornish Martin
Florence Perkins Mignery
Saul Millstein
Albert Newell
Linwood E. Palmer
George A. Parker, Jr.
Walter M. Pejko
J. Franklin Pineo, Jr.
Anna Fisher Plantinga
Joseph Richard Rancourt
Robert S. Rice (R)
Priscilla George Ross (R)
Ruth Wolfe Schreiner
Esther Goldfield Shafer
Betty Anne Royal Spiegel
John E. Stevens
John L. Thomas, Jr.
Marion B. Thomas (R)
Edith Curtis Townsend
Theodora Wright Weston
Priscilla Hathorn White
Betsey Libbey Williams
Beatrice Sosnowitz Wofsey
No. in Class 206
Contributors 59
Amount \$460

1944
Helen Watson Boldi
Barbara White Haddad
A. Warren McDougal
Melvin A. Andell
Virginia Howard Atherton
Rae Gale Backer (R)
Nancy Curtis Bacon
Lowell E. Barnes
Vivian Maxwell Brown
Catherine Clark Brunell
Robert H. Brunell
Donald M. Butcher
George H. Conley
Jean McNeill Decker
Alexander E. Dembkowski
Wesley R. Doe (R)
Patricia Berquist Donna
Mildred Steenland Ellison
Alice Leyh Fisher
Richard D. Goodridge
W. Harris Graf
Elaine Anderson Hagstrom
William R. Hibel
Frederick W. Howard
William Hutcheson (R)
Robert E. Kahn (R)
Harry L. Levin (R)
Barbara Blaisdell Libby
Dorothy Holtman Lyon
Malcolm D. McQuillan
N. Douglas MacLeod, Jr.
Eileen A. Matteo
Priscilla Higgins
Merrifield (R)
Evelyn Gates Moriarty (R)
John Poirier
Barbara Baylis Primiano
Henry V. Rokicki
Edward H. Saltzberg
Robert W. Sillen
James Springer
Carl Stern
Eugene C. Struckhoff
Gertrude R. Szadzewicz
John A. Thompson
Raymond N. Tuller
Remo M. Verrengia
Jean Hayes Wassell
Frederick S. Wood
Ruth Parsons Van Hoek
Alden E. Wagner
Annabell Morrison Wolfertz
No. in Class 183
Contributors 51
Amount \$381.50

1945
Charles A. Dudley
Marguerite Broderston
Adele Grindrod Bates
Beverly F. Booth
Lois Pinkham Bridges
Marilyn L. Bryant (R)
Mason W. Colby
Lois Loudon Cutler
Lydia Tufts Green
Margery Owen Fallon
In memory of
Paul Fullam
Edwin S. Gibson
Floyd L. Harding
Janet Scott Jacobs Holden
Jeanne Parker Holmes
Barbara Soule Hoover
Doris Taylor Huber
Paul R. Huber
Doris Blanchard Hutcheson
Frederick P. Jellison
Ann L. Johnson
Roslyn Kramer
Mary Callard Laughland
Marie Kraeler Lowenstein
Rita A. McCabe
Dorothy Reeves Moyer
George A. Ober, Jr.
Jean Adams O'Meara
Naomi Collett Paganelli
Ralph P. Pallin
Grace Keefer Parker
Joan Gay Payne
Kenneth L. Quimby
Frances Willey Rippere (R)
Douglas N. Smith
Lucille LaGassey Stampon
Helen Strauss
Sherwood J. Tarlow, Jr.
Edith Hinkley Turner
Hazel Brewer Warren
William L. Whittemore
Maurice M. Whitten (R)
Mary Louise Fraser Woods
No. in Class 141
Contributors 43
Amount \$297.50

1946
Cloyd G. Aarseth
Carol Robin Epstein (R)
Wilfred R. Granger
Anne Lawrence Bondy
Naomi Dick Dice
Shirley Martin Dudley
Nancy Parsons Ferguson
Hope Emerson Hatch
Francis J. Heppner
Dorothy Dunham Hobbs
Marie E. Jones (R)
Rowen Kusnitt Kessler
Hanna Karp Laipson (R)
Hilda Robertson Lyons
Adelaide Jack McGorrill
Jean O'Brien Perkins (R)
Betty Soule Pope (R)
Courtney Simpson
Frederick H. Sontag
Margaret Lancaster Urie
Robert E. Urie
John W. White
No. in Class 112
Contributors 22
Amount \$201

1947
Carl R. Wright
Margaret Scott Alden
Roberta Marden Alden
Nancy Burbank Allured
Elizabeth Richmond
Dorothy Briggs Aronson
Joanne O. Bouton
N. Paul Bromley
William L. Bryan
Thomas W. Burke
Arthur E. Butters, Jr.
Beverly Benner Cassara
William A. Crowther
Albert I. Ellis
Elinor Farnham
Elizabeth Hall Fitch
Stanley F. Frolio
Ruth Jaffe Gordon
Ray B. Greene
Marilyn L. Hubert
Harold Joseph
Lawrence S. Kaplan
Mary Alice Campbell Kozen
Raymond F. Kozen, Jr.
Jane Lee
Barbara King Longley
Robert Lucy, Jr.
Robert L. Madison
Marjorie Collins Marcyes
Richard J. Marcyes
Arline Richards Marks
Marjorie Maynard
Jerry M. Merrill
Louise Kelley Pape
Alice Billington Rex
Dana I. Robinson
Harriet Nourse Robinson
Edward S. Sherwood
Shirley Warren Shirley
Harold L. Vigue
Jean Whiston
Arline Kiessling Wills
Roberta E. Young
No. in Class 135
Contributors 43
Amount \$262.50

1948
Douglas C. Borton (R)
Francis R. Folino
Melzine M. McCaslin
Ruth Burns Mason
Hazel Hucksins Merrill
Frederick W. Perkins, Jr.
James Alex
Margaret Clark Atkins
Anne Fraser Baer
Everett Bauer
Mildred Hammond Bauer
Shirley M. Bessey
Edward G. Birdsey
Mary Louise Coulombe
Antoinette H. Booth
Donald J. Bourassa
Priscilla Bryant Bourassa
Shirley Carrier Brown
Benjamin C. Bubar
Loring B. Buzzell
Lois Bowers Came
Philip M. Caminiti
David A. Choate
Eleanor A. Clayton
Dorothy Worthley Cleaver
Elizabeth Coombs Corke
Charlotte Weinberg Davis
Muriel Howard Deacon
Ruth Rogers Doering
Janet Marie DeWitt
Norman G. Epstein
Virginia Brewer Folino
Ardis Hennigar Gile
Avis Yatto Godbout
Bertha F. Graves
Janet Gay Hawkins
Lowell B. Haynes
Eugene A. Hunter

1949
Sidney B. McKeen
Anne Jennings Taussig
Martha Jackson White
Kathryn Garrick Alex
Muriel Briggs Austin
J. Philip Berquist
Ann M. Beveridge
Donna Barber Billings
Carol Carpenter Bisbee
Paul E. Bourne
Joan Barnard Brady
Mary Lou Clare
June Stairs Cook
Robert L. Cook
Alice E. Covell
Lois Smith Cummings
Janet Pride Davis
Jean Bonnell Day
Miriam Dickinson
Justine Jackson Doherty
Joan A. Donnelly
Barbara Grant Doyle
Ruth Endicott
Dwight E. Erlick
Anne Hagar Eustis
Claire Rosenston Fishstein
Barbara A. Foley
Mary Bauman Gates
Lionel A. Goulet
Hope Harvey Graf
Mary Hathaway
Martha Bennett Headley
Jean C. Hillen
Evelyn Armstrong King
Marion L. LaCasce
Patricia Lydon Latham
Robert Latham
Roy F. Leaf
Nydda Barker Lowery
James A. Lundin
David D. Lynch
Ruth Clements McGill
Nellie Macdougall
John V. Mahoney
Roberta Longley Mahoney
Richard G. Michelson
Barbara Backman Millar
Jean Maloof Naman
Robert F. Nardozi
Hilda Farnum Nicoll
Donald E. Nicoll
Benson Noice, Jr.
James C. Noice
John R. Paquette

Katherine Weisman Jaffe
Cyril M. Joly, Jr.
Sherwood L. Jones
Marvin S. Joslow
Edward E. Kaplan
Barbara Herrington Keith
Carolyn Browne Kelso
Harvey L. Koizim
Charles Kramer
Merle I. Lathrop
Katherine Clark LeVan
C. Harry Lightbody
Margaret Horsch Lightbody
Barbara Lindsay Lucy
Ruth Barron Lunder
Gertrude S. McKusick
Evelyn Helfant Malkin
David M. Marzynski
Patricia Durling Meeker
Gordon T. Miller
Marie Machell Milliken
Ann Kahler Murray
Phyllis O'Connell Murray
Mary Burrisson Odell
Timothy C. Osborne
F. Shirley Parks
Philip E. Peterson
Virginia Brackley Piccirillo
Richard H. Rabner
Richard H. Rogers
Janet G. Rougvie
Aaron E. Sandler
Allan D. Sarner
Gloria Shine Seidenberg
Mildred Ann Schnebbe
Georgeanna Davenport Sim
Philip J. Shulman
Flora Pearse Smith
Paul I. Smith
Paul Solomon
Joseph R. Spina
Janet Pray Stoessel
Carol Silverstein Stoll
Frederick P. Sutherland
Gilbert Y. Taverner
Frederick E. Tippens
Walter R. Towle
Barbara Bond Wasserman
Robert M. Wasserman
Raymond A. Webster
Mary Willson Whitlow
Harriet Sargent Wiswell
Marianna Nutter Wyer
No. in Class 253
Contributors 91
Amount \$579.50

Jeanne F. Pelletier
 Mary Marjorie Plaisted
 Edward S. Pniowski
 Lorenzo C. Rastelli
 Antoinette Fera Romano
 June White Rosenberg
 Robert C. Rowell
 Fred D. Sahagian
 Karekin D. Sahagian
 Jeanne Gray Schmidt
 Martha Loughman Shepard
 Robert A. Slavitt
 George I. Smith
 H. Guy Smith
 Barbara K. Starbuck
 Gerald Stoll
 Leonard R. Warshaver
 Arthur B. Warren, Jr.
 Haroldene Whitcomb
 Conrad G. White
 Chester J. Woods, Jr.
 Ivan A. Yeaton, Jr.

No. in Class 277
 Contributors 76
 Amount \$469

1950
Ruth Pierce Abrahamsen
Nelson T. Everts
Beverly M. Holt
 John Alex
 Barbara Wyman Anderson
 Martha R. Apollonio
 Charlotte Shoul Backman
 Nancy Bradbury Belisle
 Albert L. Bernier
 Francis N. Blodin
 George M. Bowers, Jr.
 Richard M. Bowers
 Helen Kelleher Breen
 Foster Bruckheimer
 Hildegard Pratt Burkhardt
 Robert C. Burkhardt
 Charlotte Richardson

Ernest L. Carpenter
 Stanley Foster Choate
 Mary Anne Seward Crafts
 Arthur D'Amico
 James F. Doughty
 Estella Byther Dyer
 Ada Fraser Fitzpatrick
 Gerald B. Frank
 Irma M. Fritschman
 Alfred B. Gates
 Ellen Kenson Gelotte
 Gloria Gordon Goldman
 Dorothy A. Goodridge
 Richard W. Grant
 Virginia Flagg Grant
 Charlotte Crandall Graves
 Barbara Miller Green
 Eileen J. Greene
 Shirley Cookson Hall
 Lillian Meyer Haning
 Kathryn Decker Jellison
 June R. M. Jensen
 George W. Johnston
 Robert L. Joly
 Frank H. Jones, Jr.
 Margaret Rodgers Jones
 Richard H. King
 Philip R. Lawrence
 Philip C. Lawson
 Doris Knight Leele
 Neil Leonard, Jr.
 Barbara Starr Lipson
 Charles H. Lord
 Oliver M. Lund
 Mary Ellen Goldey

Matthews
 Mary Ellen Jordan
Megargee
 Barbara Hill Millett
 Robert E. Millett
 Jean Chickering Nardozi
 Arthur S. O'Halloran
 Winston C. Oliver
 Constance Foxcroft Perrigo
 L. Elizabeth Pierce
 Henry F. Poirier
 Sybil Green Reichke
 Robert A. Rosenthal
 Pauline Berry Rowell
 Eleanor L. Runkle
 Philip A. Shearman
 Mary Lobdell Smith
 Carlene MacPherson

Sparkes
 John S. Sparkes
 Mildred Fenwick Starrett

Charlotte Cowan
 Irwin Swirsky
 Priscilla Tracey Tanguay
 William A. Tipples
 Christine Winter Verrengia
 Joseph Verrengia
 Robert R. Wehner
 Patricia Root Wheeler
 Patricia Jensen Williams
 George C. Wiswell
 Gerald K. Wyman

No. in Class 265
 Contributors 81
 Amount \$482.50

1951
Richard B. Birch
Mary Leighton Mitchell
Naomi Jennison Noice
 Nancy Nilson Archibald
 Robert E. Archibald
 Mark T. Bassaches
 Richard B. Beal
 Clifford A. Bean
 E. Edward Bittar
 Glenys M. Blumenthal
 Audrey A. Bostwick
 Myra Hemenway Bowers
 Constance Brackett
 Joanne Yeaton Briggs
 Robert H. Brotherlin, Jr.
 Vivian M. Bryant, Jr.
 Helen Leavitt Campbell
 Robert Cannell
 Jean Griffin Carey
 Nancy Williams Chute
 Helen M. Conroy
 Vernon Corell, Jr.
 Jean W. Cowie
 Sebastian J. Cultrera
 Alyce Moskowitz Domenitz
 William T. Doyle
 Edith Harris Edgerton
 Warren J. Finegan
 James J. Fitzpatrick
 Ernest V. Fortin
 Sumner A. Fox
 Haddon S. Fraser
 E. Wesley Freeman
 Harriet Boyer Frost
 Robert L. Gabriel
 Cynthia Cook Gair
 Elwood Gair
 Norval E. Garnett
 Russell Goldsmith, Jr.
 Gloria Gordon H. Gracie
 Daniel M. Hall
 Arthur E. Hanken
 Chester D. Harrington, Jr.
 Catherine Burns Hudson
 Michael Reed Hunter
 Duane A. Hurd
 Joyce Hutchins
 Robert A. Ingraham
 Shirley Raynor Ingraham
 A. Eugene Jellison
 Joanna D. Johnston
 Richard Kaplan
 Marie Donovan Kent
 John J. Keough
 Joy Delong Keough
 Harvey M. Kirstein
 Edwin J. Laverty
 Robert S. Lee
 Frederick W. LeVeque
 Ruth Leverett
 Norene Tibbets Linder
 Jane Perry Lindquist
 David E. Love
 Leland F. Lowery
 Patricia Anderson Lund
 Alma Ward McGowan
 Charles S. McIntyre
 Joan Cammann McIntyre
 Jean L. MacDonald
 Helen Nickerson Martin
 David W. Miller
 Alan P. Mirken
 Fenton R. Mitchell, Jr.
 Elaine S. Mordecai
 Mark K. Muller
 Shirley Frolio Pearson
 Sue Rees
 Raymond E. Reich
 Edith L. Robertson
 Helen Palen Roth
 Robert M. Roth
 Priscilla Davis Runkle
 Anne Bither Shire
 Arthur I. Shulkin

Francis J. Silver
 Deborah Smith
 Edward M. Stuart, Jr.
 Carol Huntington Upton
 Robert C. Vergobbi
 Stuart A. Warshaw
 Robert White
 Wilford D. Whiteley, Jr.

No. in Class 314
 Contributors 92
 Amount \$620

1952
Paul M. Aldrich
Margaret Blagys
Margaret D. Pierce
 Ann F. Rossiter
 Herbert Simon
 Marjorie Russell Aldrich
 Jeremy J. Amott
 Janice Pearson Andersen
 Ira Baricini
 Jean Brewer Bridge
 Margaret Brown
 Joyce Wallace Bryant
 Donald O. Cameron
 Sally Shaw Cameron
 Susan J. Campbell
 Edward J. Cawley
 Richard T. Chamberlin
 John L. Cook
 Thomas J. Crossman, Jr.
 Nancy MacDonal Cultrera
 Dale Dacier
 Alan H. Davis
 Austin M. Deane
 John Deauville
 Suzanne Webster Duncan
 Arthur G. Eustis, Jr.
 Daniel W. Fenner
 Elisabeth Levardsen

Finegan
 William A. Gardner, Jr.
 Norma Bergquist Garnett
 Raymond S. Grant, Jr.
 Everett F. Gross
 Edward M. Guild, Jr.
 Donald G. Hailer
 Nita Hale
 William W. Hays
 William W. Hennig
 Louise Ginzberg Hirschberg
 Betty Brown Holmes
 Barbara Cheeseman Hooper
 Robert L. Hooper
 Gerald J. Holtz
 Rodney H. Howes
 Henry B. Hummel
 Jean A. Huntington
 Frederic C. Ives
 Sally Jackson
 Georgia Fisher Kearney
 Raymond F. Keyes
 Robert E. Kline
 Joan Martin Lamont
 Priscilla C. Leach
 Carlton D. Leaf
 Elaine Peirce LeCount
 Carol J. Leonard
 Dorothy Washburn Leonard
 David E. Lynn
 John H. McGowan, Jr.
 James A. MacLean
 Bruce MacPherson
 William J. D. Miller
 Edna Miller Mordecai
 David Morse
 Deborah Brush Morse
 Patricia E. Moss
 Herbert Nagle
 William E. Neth
 Nancy E. Newman
 Katharine O. Parker
 Edmund Pecukonis
 Ann Ryan Pierce
 Graham T. Pierce
 Stanley G. Pike
 Anne C. Plowman
 Gerald R. Ramin
 Arlene Tobey Ratoff
 John J. Ratoff
 Herbert H. Richardson
 Alfred J. Rosborough, Jr.
 Howard B. Sacks
 David Saltzman
 Diane B. Sargent
 Evangeline Sferes
 Robert Shapiro
 Jean Smith
 Richard Y. Sutton
 Richard G. Streich

Edith Ann Carpenter
 Sweeney
 Mary Sargent Swift
 Joseph H. Unobsky
 Beverly Baker Verrengia
 Richard Verrengia
 Barbara C. Wentworth
 Elizabeth Shaw Whiteley
 Caroline S. Wilkins
 Irwin Winer
 Patricia Omack Woodwell
 Arthur W. Wyman

No. in Class 317
 Contributors 99
 Amount \$706.50

1953
Barbara Best Merrill
Ronald E. Nagle
Joanne Terrill Petersen
 Charles R. Anderson
 Dana W. Anderson
 Esther Jane Bailey
 Beryl Baldwin
 Jerome D. Barry
 Carolyn English Beane
 Folker Belzer
 Norma Shea Black
 Ruth Gallup Bowers
 Pauline Marge Carlson
 Parvis Chahbazi
 Edwina B. Constant
 John Deauville
 Louise MacGill Dages
 George C. deLuna
 Elizabeth Robertson Deuble
 Alan S. Efromson
 Edwin E. Fraktman
 Elaine Mark Goldsmith
 Robert T. Hargrave
 David W. H. Harvey
 Florence Fisher Hooper
 Sally Baines Howard
 Roger M. Huebsch
 Theodore E. Johnson
 Helen Gogood Keeler
 Elaine Rhodes Kirstein
 Leone Knowles
 Bernard Laliberte
 Thornton E. Lallier, Jr.
 David Lavin
 Loretta C. Mearns
 Paul Mendelsohn
 Nancy Twaddle Meserve
 Virginia Falkenbury

Murphy
 Marcella Laverdiere
 O'Halloran
 Roger C. Olson
 James A. Rapaport
 Sarah Packard Rose
 Phebe Dow Runyon
 Mary West Scott
 Jean Lyons Shulkin
 Alder C. Sprague
 Jess H. Smith
 Barbara M. Squire
 Robert T. Stainton
 Elaine Zervas Stamatiopulos
 Barbara L. Studley
 Sylvia Caron Sullivan
 Prudence Belcher Tracy
 Barbara Forrest Young

No. in Class 305
 Contributors 54
 Amount \$414.50

1954
Dorothy Nymen
Abbott E. Rice
Roy V. Shorey
Lorraine A. Walker
 David Wallingford
 Anthony A. Vanuchi
 Joseph R. Alpert
 Sally Baty
 Carol Robinson Bear
 Richard E. Beatty
 Donald S. Bishop
 Linda J. Burt
 Lois McCarty Carlson
 Albert R. Case
 Diane L. Chamberlin
 Peter C. Chaplin
 JoAnne Conkling
 Edith M. Costello
 Jean F. Cressy
 Robert B. Cross
 Karl Decker
 Merrilllyn Healey Decker
 Mary P. Doherty

Karl Dornish, Jr.
 Georgia Roy Eustis
 Nancy O. Eustis
 Robert A. Fischer
 In memory of
 Paul Fullam
 Faith DeVol Gross
 C. MacDonald Groust
 Carolyn E. Grutzner
 Barbara Guernsey
 Sarah A. Hall
 Robert H. Hawkins, III
 Carolyn Perron Hennig
 Janice W. Holland
 Douglas C. Howard
 Robert F. Hudson
 Susan Smith Huebsch
 Patricia B. Ingraham
 Carolyn Bruning Jellison
 Anne Delamater Lovaas
 Mary D. Mastin
 Winifred Robertson Miller
 Janet Fraser Mitchell
 Margaret J. Moore
 Dorothy Foster Olson
 Elma J. Parker
 Melvin D. Phillips
 Arthur Rothenberg
 Arlyne Rosenthal Sacks
 A. Allen Sandler
 Sherman H. Saperstein
 Edward H. Shenton
 Dorothy Sellar Sheerin
 Robert F. Sheerin
 Susan Johnson Sleeper
 Joy Slovin
 Geneva A. Smith
 Barbara Hills Stuart
 Diane Stowell
 Anne Abele Swendig
 Derek B. Tatlock
 Anna Lee Thomas
 Robert F. Thuston
 Ward W. Tracy
 Rosemary Thresher
 Leslie A. VanNostrand
 Meredith Mitchell
 von Breitenfeld
 Robert L. Voorhees
 Betsey Fowley Wallingford
 Bernard Wexler
 Donald Wyeth
 No. in Class 254
 Contributors 73
 Amount \$379.90

1955-1956-1957
 Gwen VanEerden Andersen
 Charles G. Boehm '55
 Jane Phillips Hyde '55
 Anne C. Rehr '55

Louise Peterson Chahbazi '56
 Toby Lunder Lasoff '56
 Linda K. Cadmus '57

FRIENDS
 Claude L. Allen, Jr.
 In memory of
 George G. Averill
 (by Mrs. Averill)
 Dr. and Mrs. J. Seelye
 Bixler (R)
 Frederic E. Camp (R)
 Zechariah Chaffee, Jr.
 Edith M. Costello
 Hollowell Davis
 Mr. and Mrs. Harry Kisloff
 *Paul A. Fullam
 Arthur A. Hauck
 Dr. and Mrs. Warren E.
 Kershner (R)
 Arthur Lagueux
 Mr. and Mrs. Martin M.
 Landay
 Mr. and Mrs. E. Allan
 Lightner (R)
 Arthur R. McDougall
 John J. McCloy
 Sumner T. Pike
 Joseph H. Pratt
 F. J. Pritham
 Arthur W. Seeppe (R)
 Sumner Sewall
 Sally I. Sherburne
 William B. Skelton (R)
 Dr. Payson Smith
 James Russell Wiggins
 Mary Curtis Zimbalist (R)

Presented with Pride . . .

Twenty speeches to be made by President Bixler the headline read January 18 — and with accuracy, for Colby's busy Prexy was leaving on an appointment-jammed trip which was to carry him as far west as Denver.

Dr. Bixler's speaking engagements actually had begun a few days earlier at Boothbay Harbor when he dedicated a new high school.

"Will this school be a place where growth of body is matched by growth in character, in imagination, in ability to meet the issues of mature life?" he had asked. "It depends on what goes on in the minds of teachers here. . .

"The times call above all else for flexibility and imagination . . . for minds that are encouraged to invent, experiment, and to explore. The way to develop such minds is to bring them in touch with teachers who are themselves on fire for the life of free inquiry and can show by example what it is like."

The editorial page of the *Portland Press Herald* repeated these quotes and added, "Well said, President Bixler, and we hope every public educator and school committeeman in Maine was listening. Good teachers can educate their charges under appallingly contrary conditions but poor ones will fail if their classes sit in palaces."

Dr. Bixler's western trip started at the Hotel Commodore, New York City with an address before the National Industrial Conference Board. In addition to visits with parents and alumni, a sermon at the Germantown (Pennsylvania) Unitarian Church, and a talk at the Sunday Evening Forum of the Community Church, New York City, Dr. Bixler presented four lectures, January 31-February 3, at the Iliff School of Theology in Denver, Colorado. On his return east, he spoke, as he had a year ago, before executives of the Bell Telephone Company, enrolled in an Institute of Humanistic Studies at the University of Pennsylvania.

"Today we can see the steady growth of a social conscience. This has come in part from public and governmental pressure, but I think it is also in part a result of changing ideas as to what morality and responsibility in business mean," he told the Institute.



a tribute to journalism."

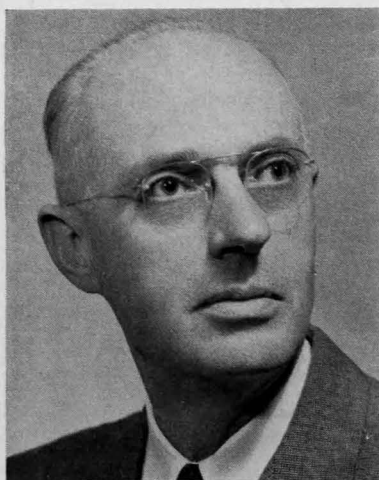
"This is a tribute to those human qualities which he has . . . a tribute to what he has done in his profession," the Governor said.

Among the many gifts he received was an initialed portable typewriter from *Sentinel* employees. Mr. Lewis continues to write his popular daily column for the *Sentinel*, "Seeing and Believing" under the pen name, Ima Wanderer.

CALEB A. LEWIS, 1903, was lauded as "a great citizen, a great journalist, and a self-effacing individual" as recipient of the Most Distinguished Service Citation of the Waterville American Legion at a testimonial dinner in his honor, January 14.

The editor-emeritus of the *Waterville Morning Sentinel* heard tributes delivered in person by many friends, among them James F. O'Neil, publisher of the *American Legion Magazine*, and Maine Governor Edmund S. Muskie.

Governor Muskie termed Mr. Lewis "a warm-hearted, understanding, courteous, and genuine man" whose life "has been



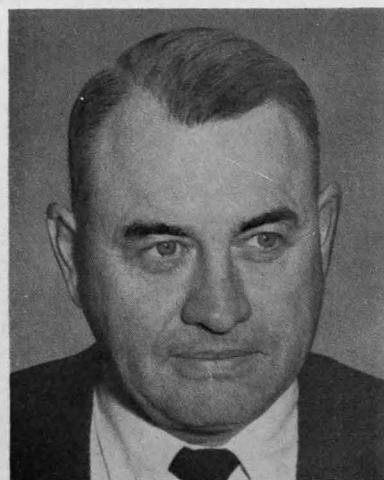
Ernest Miller, 1929

(Continued from page 8)

The Graduate School of Banking, which is conducted by the American Bankers Association in cooperation with Rutgers, is a school of advanced banking open to bankers of officer rank. Mr. Miller is assistant cashier of the First National Bank of New Milford, Connecticut.

Only thirty of 339 thesis submitted by last year's class were chosen for the recognition. Mr. Miller was the sole member of a country bank to have his thesis chosen.

In addition to writing the thesis, Mr. Miller also attended three summer sessions at Rutgers and did two years of extension study work at home.



Bernard Johnstone, 1932

The new executive manager of the Maine Publicity Bureau is BERNARD JOHNSTONE, 1932. "Mose," captain of the 1931 football team, has been manager of the Augusta branch of the Maine Publicity Bureau and executive secretary of the Augusta-Hallowell Chamber of Commerce since 1950.

He coached football at Milo, Skowhegan, and at Glen Falls, New York following graduation from college and served as principal of the high school in Kingfield in 1940 and 1941 prior to enlisting for two years with the army.

Following his discharge in 1943, he became co-owner of the Snell Tire Company of Augusta selling his interest in that concern in 1950.

Sports

COLBY IS WITHIN ONE GAME of clinching its sixth consecutive state series basketball title. The Mules play Maine at Orono February 14 (the last time, playing at the University, Colby squeaked by 65-64); and Bowdoin and Bates at Waterville, February 23 and 27. The Bobcats had the distinction of stopping the varsity at 17 consecutive state series victories, January 13.

The big gun on the court has been Captain Bob Bruns of Forest Hills, N. Y., averaging fourteen points per game. He had a spectacular night against the University of Vermont, establishing a new individual scoring mark with 37 points — 14 field goals out of 20 attempts and nine out of nine from the foul line. Frank Piacentini set the old record in 1952, sinking 34 points against Norwich.

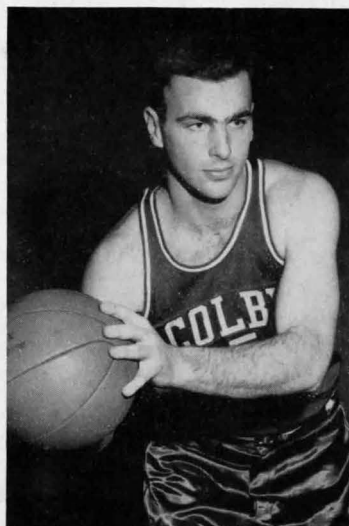
Despite Bruns' brilliant showing, Colby's greatest weakness has been in foul shooting. The Mules have been outscored by 84 points from the free throw line. In the loss to Bates, Colby connected on 14 foul tosses, the Bobcats on 32.

Graduation next June will hit the squad severely. Only Charlie Twigg, '57, will be left from the starting five. A fast, solid freshman team will be coming up to join this year's sophomores of Johnny Edes, Larry Cudmore, Dick Campbell, Charles Webster, and Warren Judd. But the newcomers will have a sparsity of height.

Two All-Staters, Paul Neri, 6'4", a good rebounder from Portsmouth High, and forward Joe Grimm, 6'3", Haddonsfield, N. J., are the tallest. Among other promising frosh are Lloyd Cohen, former All-New Jersey guard, and Bob Kilty, ex-Sommerville High set-shot artist, who received All-New England recognition.

DURING COMMENTS at the dedication of the Harold Alfond Rink, Walter Brown, owner of the Boston Bruins, referred to hockey coach Jack Kelley in this fashion:

"No one has a better grounding in the game . . . I know he is going to



Bruns

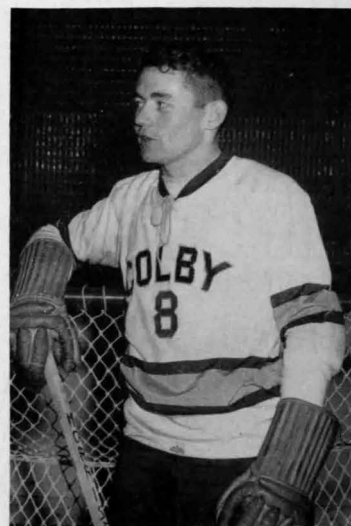
be a great mentor for your future Colby teams. . . He really has the stuff."

Kelley has won a host of friends as director of the college's skating program. Frankly, the varsity hockey material was not strong, but the team has overcome its handicaps with a fast, alert attack that has twice toppled Bowdoin and given some spirited competition to more experienced clubs.

Captain Charlie Morrissey of Newton, Mass., has been the key man. He has collected 13 points on eight goals and five assists. Howie Cates, another member of the first line, is pushing him in scoring with four goals and six assists. A pleasant surprise defensively has been the play of Guy Vigue of Waterville. From a squad of 11 players, Coach Kelley will lose five by graduation.

The freshmen are a bright spot. They have depth and ability. The combination of a new rink, a new coach, and a solid freshman schedule carry important implications for the hockey campaigns that lie ahead.

A former center on the Needham High State Championship team, Dick Morrison, has picked up eight goals and five assists for the frosh. He has been converted to a left wing on a fine line that includes Mark Brown, Waltham, Mass. at right wing and Jay Church, former Choate School skater, at center. This trio has netted 12 goals.



Morrissey

Defensively, Don Cote of Lewiston, former All-New England performer from St. Dominic's High, and Gregg MacArthur, who played at Belmont Hill, have been bulwarks for the freshmen. And much credit must also be handed to tiny Bob Auriemma, who has been a miracle man in the nets even though he has never played hockey previously. Yes—things are looking up in hockey!

Brandeis, Williams and Trinity will replace Tufts, Amherst, and Middlebury on next fall's football slate. Colby will be playing Brandeis and Williams for the first time in history. The schedule: September 29, Brandeis; October 6, Williams at Williamstown; 13, Springfield at Springfield; 20, Trinity; 27, Bowdoin; November 3, Maine at Orono; 10, Bates at Lewiston.

Lee Williams is going into the summer camping business. He has purchased the Crystal Spring Camps, 19 cabins and a lodge, on Great Pond in Rome. The camps will be open around Memorial Day and close shortly after Labor Day. It is expected they will be a popular spot for many Colby alumni returning at Commencement. Lee was acting manager last summer when the camps were owned by George Bucknam, Maine's Deputy Fish and Game Commissioner.

VARSITY BASKETBALL

Date	Opponent	Colby	Opp.
Dec. 3	Yale University	74	96
Dec. 7	Bates College	85	77
Dec. 9	University of Maine	65	64
Dec. 10	Dartmouth College	41	52
Dec. 14	Bowdoin College	82	68
Dec. 16	Boston University	60	83
Dec. 17	Providence College	62	74
Dec. 19	St. Anselm's	52	63
Dec. 21	Seton Hall	54	61
Dec. 28	* Middlebury College	58	53
Dec. 29	* Bowdoin College	70	52
Dec. 30	* University of Conn.	71	79
Jan. 7	Amherst College	59	56
Jan. 9	University of Maine	90	75
Jan. 11	Bowdoin College	74	59
Jan. 13	Bates College	66	70
Jan. 31	St. Michael's	64	78
Feb. 1	Vermont	88	62

* New England College Tournament

FRESHMAN BASKETBALL

Dec. 1	Charleston Air Base	74	43
Dec. 7	Morse High School	58	59
Dec. 14	Maine Vocational Technical Inst.	109	47
Jan. 7	Dow Air Base	70	52
Jan. 9	Brunswick Naval Air Station	69	56
Jan. 12	Higgins Class. Inst.	103	55
Feb. 8	M. C. I.	80	81

VARSITY HOCKEY

Dec. 15	Bowdoin College	6	1
Jan. 7	Norwich	2	7
Jan. 11	Bowdoin College	4	1
Feb. 2	Amer. International	8	14
Feb. 3	Amherst	2	5
Feb. 8	New Hampshire	2	3

FRESHMAN HOCKEY

Jan. 7	Waterville H. S.	8	0
Jan. 10	St. Dominic's H. S.	3	4
Jan. 13	Berlin (N. H.) H. S.	3	0
Feb. 4	Waterville H. S.	12	1



Keeping in Touch

'87 The tradition of the ministry still continues in the family of the late Dr. Woodman Bradbury and his wife (Mary Farr, '88). Their daughter Elizabeth, a graduate of Radcliffe College, married the Rev. Charles Lyon Seasholes, minister of the Baptist Church, Dayton, Ohio. Recently the Seasholes presented a lecture at the Old Cambridge Baptist Church in memory of Dr. and Mrs. Bradbury who served that church for several years.

Mary Lyon Seasholes, a granddaughter, and her husband, the Rev. George Frederick Taylor have been sent to India by the Methodist Missionary Board where Mr. Taylor is teaching in Hiclop College and actively engaged in the Student Christian Movement. A grandson, Bradbury Seasholes, is an instructor in political science at the Univ. of North Carolina, Chapel Hill, working for his master's degree.

'89 Minnie Bunker, who has retired from teaching, lives in the Faculty Club across from the campus of the University of California, Berkeley.

'96 Jessie Pepper Padelford continues to live in Seattle, Wash. and keeps her interest in students by her association with the chapter of Sigma Kappa which she organized there.

'01 Margaret Williams Thomas, the widow of Rev. George Thomas (known as the "Sky Pilot of the West"), is active in church work and living in Globe, Arizona.

The Rev. and Mrs. Ernest Ventres (Lulu Ames, '00) observed their fiftieth wedding anniversary, Sept. 13. He has retired from the ministry, spending the winter in Wakefield, Mass. and summers at Penguin Cove, Rockport, Mass., where he preached many years.

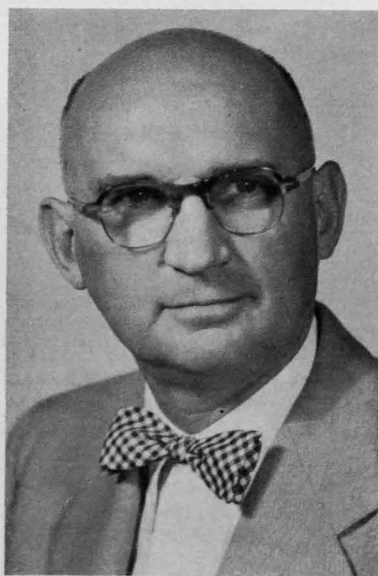
'03 Florence Perry Hahn is back in her home at Friendship after several weeks in the hospital recovering from a heart attack. She is busy looking after treasures of her late husband, Dr. W. H. Hahn, who was a collector of all kinds of antiques, especially lamps.

'10 Our sympathies go to the Rev. John Tidd on the death, November 26, of his wife, the former Rose Foye. She had been a wheel chair patient for the past eight years. The Tidds were married the day that John graduated from Colby. Mr. Tidd is now living with his son, a technical engineer with General Electric Co. in Cincinnati, Ohio.

'11 Beulah Withee, who teaches in Brooklyn, N. Y., recently had the misfortune to break her arm.

'12 Emma Leighton Walden has a new home at Greenville. She is the proud grandmother of young Marshall Leighton Walden, the son of Major Stanley Walden, stationed at the air force base in Houston, Texas.

'13 Dr. and Mrs. John Foster have returned to their home in Middlebury, Conn. after a trip to Europe.



Robert A. Hussey, '16, business manager of the Ordnance Research Laboratory and professor of industrial engineering at Pennsylvania State University, retired as professor emeritus January 1 to accept a position at the University of Puerto Rico, Mayaguez, Puerto Rico, where he will be professor and head of the department of industrial engineering.

Head football coach Frank Maze and Andy Tryens, football assistant and head coach of track, resigned December 7. President Bixler praised both men for their contributions.

"Mr. Maze and Mr. Tryens have worked energetically and devotedly," Dr. Bixler said. "Their popularity on campus is testimony to their insistence on the high standards of sportsmanship and ethics which they have demanded from their teams. We accept their resignations with regret."

Both coaches came to Colby in 1952. In addition to football, Maze handled varsity skiing a year ago and freshman baseball. He has also contributed heavily to an intramural wrestling program.

Many applicants have asked to be considered for the coaching vacancies. The college hopes to appoint successors no later than early spring.



Isatah M. Hodges, '26, recently received a deserving honor when a testimonial supper was given in recognition of his thirty years of service as superintendent of Maine School Union 31. The union is composed of the towns of Leeds, Greene, Turner, and Buckfield. About 200 attended the affair which was highlighted by a tribute from Kermit Nickerson, deputy commissioner of education for Maine.

'16 The Rev. Earle R. Steeves observed the fortieth anniversary of his work in the ministry, Dec. 4. He is minister of the Unitarian Church, Leonminster, Massachusetts.

'17 Charles Price has retired from the Norton Co. of Worcester, Mass. He joined the company on a permanent basis in 1917, although he worked for the concern, which manufactures abrasives and grinding wheels, for several summers between 1910 and 1916. He is one of the founders of the National Office Management Association and since 1941 has been district manager of Norton's Pittsburgh office and warehouse.

'19 Helene Blackwell Humphrey lives in Newton Highlands, Mass. She writes that she's the doting grandmother of an eight month old little boy.

Mira Dolley has been awarded the Gilley Scholarship for the second time. It is given to a teacher of French for study and travel in France. This is the first time it has ever been awarded twice to the same person.

Beatrice Bowler Nelson lives in Dorchester, Mass. She is leading a busy and interesting life as a social worker for the Boston City Missionary Society. . . . Mary Ann Foss Ogden who lives in Hartford, Conn. is very active in garden club work. She gives advanced classes and lectures on flower arrangements and judges many flower shows in Connecticut and New York.

'25 Russell Squire has been elected chairman of the new Maine Employment Security Commission Advisory Council. Rod Farnham, '31, and A. Galen Eustis, '23, are also on that committee. . . Herbert Colby works with the Boston Edison Co. He spent the summer in a Melrose hospital, but is satisfactory now.

Nellie Pottle Hankins is doing graduate work after a teaching career at the universities of N. H., Mass., (Fort Devens) and Kansas. Her husband is professor of English at Kansas University.

Doris Tozier Putnam's husband is a doctor. They live in Holyoke, Mass., where she serves as president of the Hospital Aid Society and is head of a church group. The Putnams have two married daughters.

'26 The Rev. William Garabedian is serving as interim pastor of the Baptist Church, Attleboro, Massachusetts.

'27 Norton Rhoades is administrative assistant at Stamford (Conn.) High School.

'28 Ruth Williams, dean of women at Farmington State Teachers' College, studied during the summer at Columbia Univ. completing work in a course she started a year previous on "Student Personnel Administration in the Guidance Department."

Lawrence Peakes has been appointed superintendent of schools in Bangor. He had a similar position in Rumford and will assume his new duties March 1.

'30 Pfc. Lindon Christie is with the army in Heidelberg. . . Wendell Thornton has been elected superintendent of schools in Avon, Massachusetts. . . Residents of Phillips are given a treat each Christmas by Maxine Hoyt Richmond who paints murals which are displayed in a local store. Maxine teaches grade six in the community.

Word has been received of the death of George Grady on March 30. He had been ill about a year. His widow, the former Dorothy Hewitt, is living at 25 Lake Street, Hamden, Connecticut.

'31 Richard Williamson has been appointed principal of Torrington (Conn.) High School. . . Ralph Fullam is owner and manager of Fullam & Company, West Springfield, Mass., where he has been in the real estate business for the past twenty years. He was selected to lecture last fall in the University Extension Course in "Real Estate Practice" at the Springfield Museum of Fine Arts.

John S. Davidson was elected president of the Tri-County United Fund in Harrisburg, Penn. John is vice president of the Pennsylvania Power & Light Company.

'33 Marie Jurova-Lenochova writes that her husband has been appointed to the Academy of Science in Czechoslovakia. He has been doing research on steam. . . Irving Malsch has been appointed general sales manager for Bridgeport Brass Co., Bridgeport, New York.

Dr. David Sherman has been appointed superintendent and medical director at the Boston Sanatorium. He received his medical degree from Boston Univ. School of Medicine in 1937 and has been at the Boston Sanatorium since 1942. In 1950 he was named chief resident physician and executive assistant and recently he has been acting superintendent. Dr. Sherman has been an instructor in medicine at B. U. since 1942 and a fellow of the American College of Chest Physicians since 1945.

'34 Louise Williams Brown, wife of Carleton Brown, '33, has made political history in Waterville by being elected the first woman chairman on the board of education. And to accomplish it she had to win support from the opposition. Mrs. Brown was elected 4-3 by secret ballot. She is a Republican and since Democrats now hold a 4-3 majority on the board it is obvious that someone crossed party lines to support her. Good judgment! . . . William Chapman of Westfield, Mass. is president of Little Coal Co.

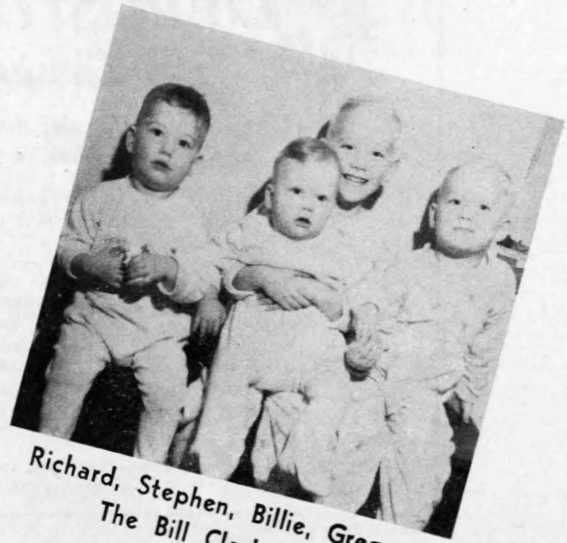
'36 Attorney Millard Emanuelson teaches at Portland University College of Business Administration. . . Fred Vigue has been appointed assistant director of the Lewiston Public Works Department.

Catherine Laughton Briggs teaches English, French, and Latin at the new high school in East Windsor, Conn. and is advisor to the school paper, *The Wheel*. . . Robert Brown is one of the

ALL UP TO CHEER FOR DEAR OLD COLBY YOUNG



Jill, Janice, Linda
The Arnold Peabodys, '34



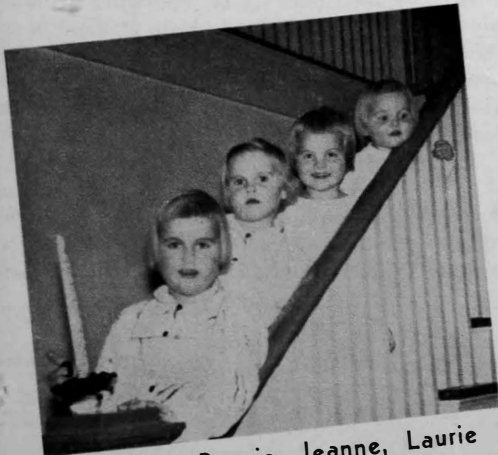
Richard, Stephen, Billie, Gregory
The Bill Clarks, '53



Top: Bonnie, Betsey, Peter, Bottom: Judith Sarah, Clare
The Clarence Dore, '39



Patricia, Ewen, (and Mike), Jane, Barbara
Roderick and Margaret (Davis, '28) Farnham, '31



Heather, Bonnie, Jeanne, Laurie
The Doug MacLeods, '44

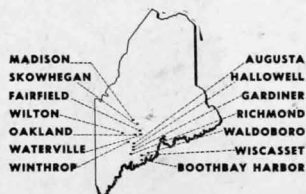


Lynda and Bobby
The Robert Kaakes, '52



We offer services designed to meet the banking needs of people in all walks of life

14 OFFICES IN CENTRAL MAINE



Member Federal Deposit Insurance Corp.
Member Federal Reserve System

The Galahad Press

(Fairfield Publishing Co.)

PRINTING

Quality

Dependability

Service

192 Main Street, Fairfield, Maine

Telephone Globe 3-7476

Keep Maine Printing in Maine

citizens named by Gov. Muskie to evaluate problems in the enforcement division of the Maine Liquor Commission.

Dr. Edmund Ervin has been elected a Councilman in Waterville. . . Dorothy Cunningham Vendetti is women's editor for the *Portsmouth* (N. H.) *Herald*.

'37 Lucille Pinette became the bride of Walter H. Zukowski, Dec. 26. Kye is associate professor of mathematics at Colby. Her groom is assistant professor of business administration.

'38 "Andy" Anderson has joined the staff of the Riley Insurance Agency in Brunswick. The Andersons (Dorothy Trainor, '38) and their five children expect to move to Brunswick soon, but in the meantime he is commuting from Portland where he has been special Maine agent since 1946 for the Royal Insurance Co., Ltd. and the Royal Indemnity Co. . . The Rev. Phillips Henderson is the new pastor of the First Calvary Baptist Church, Lawrence, Massachusetts.

'39 Dwight Sargent has been elected treasurer of the newly organized New England Society of Newspaper Editors. At the first meeting of the society, held in December in Boston, Dwight participated in a panel discussion on the handling of foreign news.

Dr. Bernard Burbank has been appointed assistant clinical director of the medical departments of Socony Mobil Oil Co., New York City. He gave up his medical practice in Portland to accept the position.



Clark H. Carter, '40, has been promoted by the Vick Chemical Company. He has been named vice president in charge of the following product departments: cough syrup, cough drops, Sofskin. He is also in charge of the sales department and sales promotion department. Clark joined Vick in 1945 as a divisional salesman. He progressed to assistant sales manager, Canadian manager, product manager and most recently group product manager. Following his graduation from college, he attended Harvard Graduate School of Business Administration and entered the Navy as an ensign in 1941. The Carters (she is Raye Winslow, '40) live in Chappaqua, New York.

'40 Lt. Col. Prince Beach has graduated from the Army Medical Service School, Fort Sam Houston, Texas.

'42 Marlee Bragdon Hill writes happily of her growing family: "Eight years after our daughter, Judy, was born," she says, "we decided our family just wasn't going to increase and we didn't want to raise an only child. Almost two years ago we added a pretty little teen-ager to our family — Diana. As if by magic — we discovered a few months later that we were to have a baby of our own. Josh was born April 17, 1955. To top it off — we are expecting another child this March!"

The Hills moved to a large farm last summer. Their address is County Line Road, Alden, New York.

'43 Charles Pearce, who lives in Gloucester, Mass., is sales representative for International Business Machines.

The Rev. Howard Johnson writes from Tokyo, Japan: "I spent last year at Union Theological Seminary, New York City, completing residence and field examinations for my doctorate." Howard and his wife (a graduate of Bates in the Class of '44) are in Japan, where they will be working for the next five years under the American Baptist Foreign Mission Society. The Johnsons will be studying language full time for the first two years, then he will be full-time on the faculty of the Institute of Christian Studies, Kanto, Gakuin University in Yokohama, where he is presently teaching a course each Saturday.

The Rev. Edwin W. Alexander has been named pastor of the East Congregational Church in Ware, Massachusetts.

'44 Robert Sillen is librarian of the Andover-Newton Theological School, Newton Center, Mass. He was formerly reference librarian and readers' consultant at the Morrill Memorial Library in Norwood.

James McMahon authored an article in the *National Educational Journal* for November entitled "Your Substitute — Baby Sitter, or Real Teacher." The article deals with ways of making the path of the substitute teacher easier and of enabling that teacher to fill the role more satisfactorily.

'46 Capt. Richard Dunphy is stationed in Nurnburg, Germany. . . . Hilda Robertson Lyons has moved with her family to a new ranch house overlooking the Charles River in Needham, Massachusetts.

'47 Jane Wallace Lamb has been appointed a correspondent for the *Brunswick Record*. . . Dick Sampson has received his M.S. in Library Service from Columbia University.

Dick Reid is manager of the Chamber of Commerce, Lake City, Florida. He was formerly with station WCOV in Montgomery, Alabama.

'48 Friends will be sorry to learn that Barbara Lindsay Lucy is now a patient at the Westfield (Mass.) State Sanatorium. . . Fred Tippens teaches at Husson College.



The News Office at Harvard University has found itself a top-notch photographer in the person of William H. Tobey, 1944. Bill has resigned from the *Waterville Sentinel* after more than seven years to work at Harvard chiefly in news, features, and public relations photography. The talented and personable Mr. Tobey has been a winner in the New England Associated Press Photo contests for the past seven years. In the 1955 competition, he took two first places and a third place, one of the winning pictures being a photo taken at Colby Freshman Week.

Bill and his wife have three youngsters, Torrie Ann, 6; Jon Otis, 4; and Kimetha Ann, four months old.

'49 Al Schwartz has joined the advertising and public relations department of the Prudential Insurance Co. at Newark, N. J. He and his family are living at 52 Leland Gardens in Plainfield. . . . Robert Rowell has been elected to the Waterville Board of Aldermen.

'50 Antoinette Klament has been named business office supervisor of the Biddeford office of the New England Tel. and Tel. Company.

'51 Harland Eastman has been appointed Vice Consul and Secretary in the diplomatic service. . . Jean Titus Wall is living with her parents at 69 High Road, Newbury, Mass., while her husband is in the navy. . . Norene Tibbetts Linder has received an advanced master's degree in education from Syracuse.

Helen Nickerson Martin's husband is a geologist for the Continental Oil Co. . . Will Whitely is guidance counselor and history instructor at the new high school in East Windsor, Conn. . . Kenneth Sawyer has been discharged from the air force.

'52 John Waalewyn is employed by the Liberty Mutual Insurance Co., Washington, D. C. . . Donald Cameron works in the credit department of the Chase-Manhattan Bank, New York City. Don is completing his thesis at N.Y.U. for a master's degree in business administration.

Dr. Alton Lamont, an optometrist, has opened an office at 701 Washington St.,

HOTEL ELMWOOD



SOCIAL CENTER FOR COLBY ALUMNI SINCE 1850

THE FINEST FACILITIES FOR YOUR
REUNION DINNERS

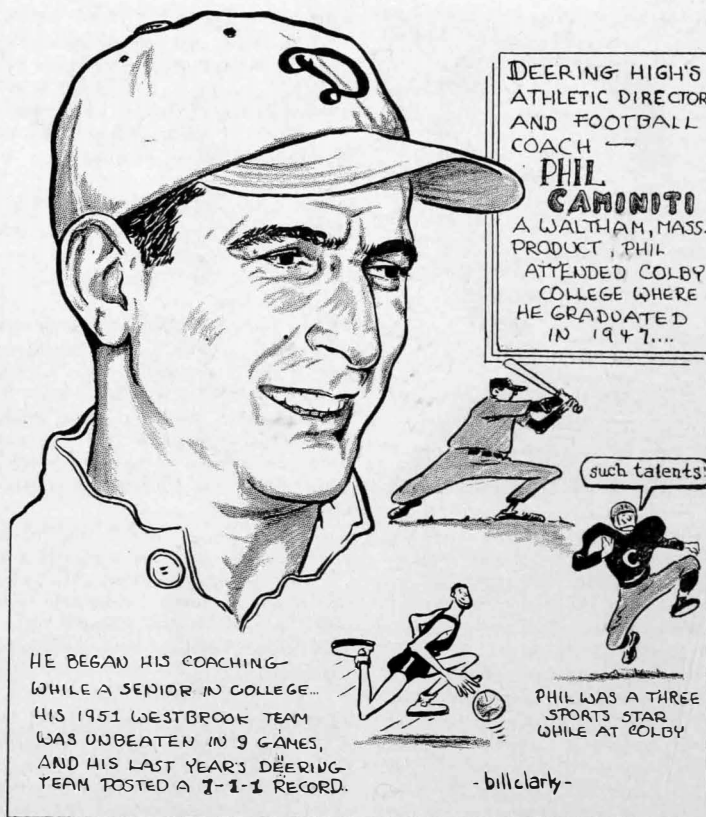
Always Home for Colby Parents and Friends

RICHARD L. WEBBER, Mgr.



Sixty-eight years of
manufacturing quality
woodenware

Forster MFG. CO., INC.
FARMINGTON, MAINE



Bill Clark, '53, sketched this last year for the Portland Evening Express. If he had been handling the assignment last month, he undoubtedly would have made mention of the newest Caminiti, Theresa Elaine, born January 16 in Portland. Theresa has a trio of little sisters, Margaret Mary, 8; Barbara Louise, 5; and Catherine Jo, 2.

Newtonville, Mass. He served his internship at the Massachusetts Optometric Clinic, the Boston Dispensary, and the Boston Medical Mission Dispensary.

Classmates express their sympathy to Mr. and Mrs. Herbert Jabar on the loss of their year-old daughter, Joni Marie. . . . Margaret Brown is employed as a medical research technician in Seattle, Wash. . . . Alan Davis has been assigned by the Goodyear Tire and Rubber Export Co. to a position in Argentina. . . . Friends will be sorry to learn that Barbara Wentworth has been ill at her home in Belfast since last May.

'53 Loretta Mearns followed her graduation from Colby with training as a medical technician and is currently working in that field for four doctors. She writes from Wilmington,

Del., "It is a wonderful profession. It offers quite a challenge and it is extremely gratifying work. Do encourage more students who have a leaning in that direction. I am sure they will not regret it."

Gilbert Tallmadge, Jr., is in French West Africa, where he will be doing geological research until next June. . . . Robert Dow is pastor of the Marlboro Baptist Church. He is a student at Andover-Newton Theological Seminary.

. . . Phyllis Lewis has announced her engagement to William Cornelius, Jr., a lieutenant (j. g.), USNR. They plan to marry in June.

'54 Jefferson Foster, a carrier pilot, has been taking instrument flight training at Pensacola, Fla. . . . Donald Wyeth is employed by Shell Oil Co.,

Boston. . . Alex Lindsay has been assigned to the carrier USS Lake Champlain.

Mary Hitch Bowles will be living in Denver, Colo. until June when her husband is expected home from Korea. . . . Army 2nd Lt. Robert Sheerin is stationed at Fort Lewis, Wash. . . . Jake Peirson is a candidate at Stanford Univ. for his MA in the field of petroleum geology.

'55 Ridgely Bullock is associated with Charles Bowden, director and co-producer of Noel Coward's "Fallen Angels," which, by the time this issue appears, should be playing on Broadway.

Roy and Judith Orne ('54) Shorey are living in Germany, where Roy is stationed

PRINTING

Letterpress - Offset - Book Binding

KENNEBEC JOURNAL
AUGUSTA, MAINE

"MAINE'S LARGEST COMMERCIAL
PRINTING PLANT"

OAK GROVE

Emphasizes Preparation for College and Gracious, Purposeful Living in a Program devoted entirely to Girls. Excellent Departments for the Girl with Talent in Music, Art or Dramatics. Joyous Recreational Life with Riding included. Winter Sports featured. Beautiful New Fireproof Buildings.

MR. AND MRS. ROBERT OWEN
Box C VASSALBORO, MAINE

Telephone TR 2 - 5422

PURELAC DAIRY PRODUCTS, INC.

Specializing in Ice Cream Mix
QUALITY DAIRY PRODUCTS
PASTEURIZED MILK, CREAM

Mandel H. Foss, Mgr.

WATERVILLE MAINE

TILESTON & HOLLINGSWORTH CO.
PAPERMAKERS

Since 1801

211 CONGRESS ST. - BOSTON 10, MASS.
F. CLIVE HALL, '26, Maine Representative

with the army. . . *Abbott Rice* works for W. T. Grant Co. in West Warwick, Rhode Island. . . *Gil Alfano* is a second lieutenant in the army.

Paul McClay entered the army on January 10 and is stationed at Fort Dix, N. J. Paul was director of news and special events at WTVL in Waterville.



BIRTHS

A daughter, Paula Susan, to Mr. and Mrs. *Jacob Hains*, '34, December 28.

A daughter, Susan Lee, to Mr. and Mrs. *Robert Smith*, '37, (*Beulah Fenderson*, '36) November 13.

A son, David, to Mr. and Mrs. *Robert Singer*, '43, (*Harriet Glashow*, '46) November 21.

A daughter, Louise Ellen, to Mr. and Mrs. *Morton Backer*, (*Rae Gale*, '44) June 17.

A son, Michael Afton, to Mr. and Mrs. *Afton Farrin, Jr.*, (*Phoebe Blaisdell*, '44) October 29.

A daughter, Karen Leslie, to Mr. and Mrs. *Gilbert Lyons*, (*Hilda Robertson*, '46) August 24.

A son, John Taraldsen, to Mr. and Mrs. *Richard W. Billings*, '48, (*Norma Taraldsen*, '46) December 12.

A son, John Warren, to Mr. and Mrs. *David Choate*, '48, October 17.

A son, Donald Carl, to Mr. and Mrs. *George Fishstein*, (*Clair Rosenston*, '49) August 21.

A son, Zachary Rowe, to Mr. and Mrs. *James E. Fraser*, '50, October 20.

A daughter, Holly, to Mr. and Mrs. *Robert Marden*, '50, (*Shirley Marshall*, '49) December 28.

A daughter, Helen Elizabeth, to Mr. and Mrs. *Charles A. Martin*, (*Helen Nickerson*, '51) November 11.

A son, Robert George, to Mr. and Mrs. *Robert McGowan*, (*Alma Ward*, '51) December 29.

A daughter, Karen Jean, to Lt. and Mrs. *Edward Wall*, (*Jean Titus*, '51) March 2.

A daughter, Leslie Joan, to Mr. and Mrs. *Donald Cameron*, '52, (*Sally Shaw*, '52) June 24.

A daughter, Holly, to Mr. and Mrs. *Richard Tupper*, '52, New York City, December 27.

A daughter, Susan Carlene, to Mr. and Mrs. *Robert Jensen*, (*Elaine Lehtonen*, '52) November 9.

A son, James Gaston, to Mr. and Mrs. *George McCasland*, (*Marjorie Smith*, '53) December 22.

Twins, Virginia Marie and James Owen, to Mr. and Mrs. *James Bowles*, (*Mary Hitch*, '54) September 29.

A son, Peter Lloyd, to Mr. and Mrs. *Robert Sheerin*, '54, (*Dorothy Sellar*, '54) November 26.

MARRIAGES

Diana Wall Pitts, '13, to *William Fogler*, Philadelphia, Pennsylvania, November 24.

Ruth Mailey, '36, to *Donald Sutherland*, Berkley Divinity School Chapel, San Jose, California, November 27.

Lucille Pinette, '37, to *Walter Zukowski*, St. Martin of Tours Church, Millinocket, Maine, December 26.

Edward Cleveland, '39, to *Helen Michaelwicz*, St. Michael's the Archangel Church, Bridgeport, Connecticut, in October.

George Toothaker, '39, to *Elizabeth Messenger*, Warren Congregational Church, Westbrook, December 13.

Frederick Tippens, '48, to *Suzanne Pooley*, St. Paul's Episcopal Church, Burlington, Vermont, December 23.

David Lynch, '49, to *Linda Zanetti*, The Church of Our Lady of Perpetual Help, Concord, Mass., October 8.

Audrey King, '50, to *Scott Hutchinson*, Central Congregational Church, Bath, November 26.

Jane Merrill, '50, to *Stanley Thomas*, First Congregational Church, Georgetown, Massachusetts, November 11.

William Thompson, '51, to *Patricia Adams*, First Baptist Church, Waterville, November 12.

Frank Kennedy, Jr., '52, to *Janet Haugen*, Bethesda Lutheran Church, Evanston, Illinois, November 5.

Elizabeth Livingstone, '52, to *Peder Field*, Grosse Pointe Farms, Michigan, December 30.

Joyce Root, '52, to *Eugene Laubach*, St. Paul's Episcopal Church, Cleveland, Ohio, July 5.

Beryl Baldwin, '53 to *Pieter Punt*, Immanuel Church, Rochester, New York, November 26.

Ann Burger, '53, to *Richard Noonan*, '54, Hartford, Connecticut, November 12.

Joyce Maguire, '53, to *Ronald Demers*, St. Augustine's Church, Andover, Massachusetts, November 27.

Sally Mathews, '53, to *Neil MacLean*, First Parish Church, Cohasset, Massachusetts, October 28.

Donald Wyeth, '54, to *Anne Bergan*, St. Anne's Church, Hull, Massachusetts, November 5.

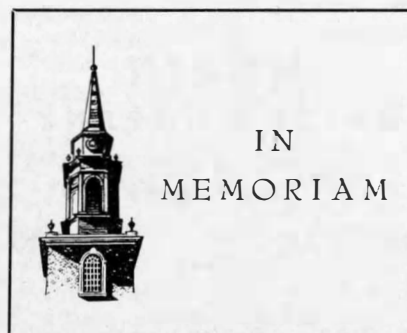
Shirley Adams, '55, to *William Rosen*, '55, Hartford, Connecticut, November 22.

Gildo Alfano, '55, to *Elizabeth Polaski*, St. Agatha's Church, Milton, Massachusetts, December 28.

Shirley Coatsworth, '55 to *David McKeith*, '55, Presbyterian Church, South Salem, New York, October 29.

Ann Dillingham, '55, to *John Ingraham*, St. John's Episcopal Church, Brooklyn, New York, November 12.

Judith Orne, '55, to *Roy Shorey*, '54, Lower Brandywine Presbyterian Church, Centerville, Delaware, October 29.



1884 *John Conant Keith*, 94, died December 30 in a Brockton (Massachusetts) hospital.

Mr. Keith was born in Rochester, Indiana, where he attended public schools before entering Coburn Classical Institute.

He spent the greater part of his life as a carpenter entering that profession in 1884 and for several years he had raised poultry and bees. In recent years he lived in Abington.

He is survived by a niece, Mrs. *Miriam K. Clark* of Amherst, Massachusetts.

Mr. Keith was a member of Delta Upsilon.

1887 *Charles Carroll Richardson*, 95, died suddenly in Garden City, New York, while visiting his daughter, Ruth.

Born in Skowhegan, Mr. Richardson was graduated from Skowhegan high school in 1881. He received his A.B. from Colby in 1887 graduating Phi Beta Kappa and an A.M. from Colby in 1891. Mr. Richardson did graduate work at Brown and at Newton Theological Institute.

From 1887 to 1903 he taught and served as principal in various schools, among them Wayne High School, East Corinth Academy, Higgins Classical Institute, Chatham (Massachusetts) High School and Cumberland (Rhode Island) High School.

He served as superintendent of school districts in Rhode Island and Massachusetts and from 1930 to 1933 he was submaster of the University School, Bridgeport, Connecticut, working under his son, Mark, who is the present headmaster.

In addition to his son and daughter, he is survived by his wife, the former *Georgia Morton*, and a grandson.

Mr. Richardson was a member of Delta Upsilon.

1892 *Dora Knight Andrews*, 84, died October 24 at the home of her son in Los Angeles, California.

The widow of the Reverend *George A. Andrews*, '92, she had led a full and

**MORIN
BRICK COMPANY**

Furnishers of BRICKS at
COLBY COLLEGE

DANVILLE - MAINE

Harold B. Berdeen

JOB - SOCIETY - NOVELTY
PRINTING

35 Years Experience

Tel. TR 3-3434 88 Pleasant Street

EMERY-BROWN CO.

WATERVILLE'S
LEADING

DEPARTMENT STORE

R. J. PEACOCK

CANNING CO.

*Canners and Dealers in
SARDINES*

FACTORIES AT
Lubec, Portland and Eastport, Maine

**THE
STRIDE RITE
SHOE**

FOR CHILDREN — Made by
THE GREEN SHOE MFG. CO.
BOSTON, MASS.



active life. This past summer she had visited with her three sons, six grandchildren and seven great grandchildren and had the pleasure of a trip to her beloved Arizona where she and her husband served for many years at Tucson.

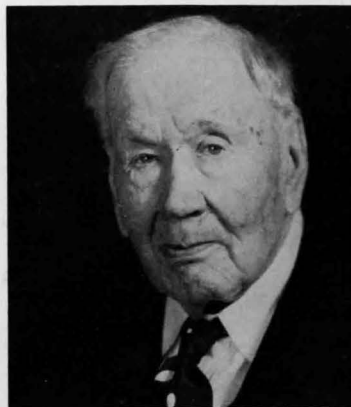
Mrs. Andrews was born in West Boylston, Massachusetts, where she attended high school. She taught in Norwood, Massachusetts for two years prior to her marriage.

Mrs. Andrews was the last survivor of the graduate women of the Class of 1892. She leaves her sons, Clark, Allen, and George, Jr., '30.

She was a member of Sigma Kappa.

1892 *George Willard Singer*, 94, died Christmas Eve at his home in Newcastle after a long illness.

A veteran newspaper man, "Judge" Singer was Newcastle's oldest resident and an outstanding citizen. He had lived in that community for thirty years.



Born in Waldoboro, he was the son of a sea captain. There were three small boys in the family, (George was the eldest) when his father sailed on the *American Eagle*, the first three-master to be built in Waldoboro, for what was to be his last sea voyage before retiring. The *Eagle* stuck on the ways at its launching — a bad omen, the ship-wise folk said — and it was, for the craft capsize in a hurricane in the West Indies and Captain Michael never returned to his family.

Mr. Singer attended public schools in Waldoboro and taught school for a while following graduation from college, serving as sub-master of Waterville High and as principal of Hallowell High. In 1898 he turned to newspaper work and for twenty years was owner and editor of the *Damariscotta Herald*. He was a staunch Republican and a strong advocate of prohibition. Mr. Singer sold his paper in 1918, but continued as editor until 1921, when he became correspond-

ent for the *Portland Press Herald* and for several Boston papers.

He was trial justice from 1906 to 1913, was recorder of the municipal court from 1913 to 1951, and justice of the peace and civil deputy for many years.

Surviving are his widow, the former Emma Metcalf; a daughter by his first wife (the former Annie Judson Hiscock who died in 1897), Mrs. Katherine Hahn, '16, Elsinor, California; two grandchildren; five great grandchildren, and a niece.

He was a member of Phi Delta Theta.

1896 *John Bradbury Merrill*, 83, died at his home in East Weymouth, Massachusetts, December 19.

A retired teacher, Mr. Merrill was born in Dover-Foxcroft and graduated Phi Beta Kappa from Colby. In 1900 he received an A.M. degree from Colby. He studied at the summer schools of Harvard and Cornell entering the teaching profession in 1896 as principal of East Corinth Academy. In subsequent years he taught at Newmarket (New Hampshire), East Boston, East Weymouth, Massachusetts, Woonsocket, Rhode Island, Eastport, Maine, and Thayer Academy in South Braintree retiring from the latter in 1948.

Mr. Merrill was chairman of the committee which presented a grandfather clock to Colby on the occasion of the fiftieth anniversary of his class. The clock now stands in the main foyer of Miller Library.

Surviving are his wife, the former Alice Wilder; three daughters, Mrs. Louise M. Walker, Weymouth, Dr. Sylvia Helfrick, Manchester, Connecticut, and Mrs. Hilda A. Marston, Wollaston, Massachusetts. Three members of his family attended Colby: his sisters, the late Miss Annie Merrill, '94, and the late Edith Merrill Hurd, '88, and a brother-in-law, the late George Hurd, '90.

He was a member of Delta Upsilon.

1903 *Bertha Wiley Chase*, 75, died December 6 at her home in Portland.

Born in Bethel, Mrs. Chase studied at Colby from 1899 to 1900 and at Smith College from 1900 to 1901. Mrs. Chase taught in Shawnee, Oklahoma from 1904 to 1914 and in Portland from 1923 to 1950.

For several years she served as class agent from the Colby Alumni Fund, performing a fine service to the college.

Surviving are two daughters by her first marriage: Mrs. Mabel Gehring Bergman of Miami, Florida and Mrs. Dorothy Gehring Gunn, now living in Maine.

She was a member of Sigma Kappa.



William Hutchinson Rowe, '06

1906 William Hutchinson Rowe, 73, died in a Portland hospital November 9.

A writer and historian, Mr. Rowe had been town clerk in Yarmouth for the past thirty-nine years and was a retired druggist.

Born in Yarmouth, where he graduated from high school in 1899, he attended Colby from 1902 to 1903 before being obliged to leave because of illness.

In 1951 Colby honored him with a doctor of letters degree for his work as a historian. He received a master of arts degree from the University of Maine in 1940.

Mr. Rowe's hobby was always history, particularly the history of his native town, which led him to write four books — two concerning shipbuilding in the Yarmouths and Casco Bay; one on the history of the Yarmouths; and the fourth, a maritime history of Maine.

He was a member of the Maine Historical Society, serving as secretary for fifteen years and at the time of his death was vice president. He operated a drug store from 1904 until his retirement in 1945.

Mr. Rowe served as representative to the legislature from 1917 to 1919 and was a member of the school board for thirteen years.

Surviving is his widow, the former Anna Dubois. He was a member of Phi Delta Theta.

1908 Mary Abbott Stobie, 68, died in Waterville December 1 after a long illness.

Born in Albion, her father was Dr. Carroll W. Abbott, former mayor of the city of Waterville.

Mrs. Stobie attended Waterville public schools and Mount Holyoke prior to graduating from Colby. She married the late John W. Stobie in 1913. From 1908 to 1913 she taught in Waterville public schools.

Surviving are her daughters, Mrs. Anna Rogerson, '38, of Houlton and Mrs. Florence Demers, '40, of Winslow; a brother, Dr. Henry W. Abbott, '06; and two nephews, Carroll W. Abbott, '36, and Henry W. Abbott, Jr., '40.

She was a member of Sigma Kappa.

1909 Maude Eaton Wadleigh, 68, died October 27, her birthday, in City Hospital, Worcester, Massachusetts.

Born in Westfield, Massachusetts, she graduated from Medford (Massachusetts) High School in 1905 and from Colby Cum Laude.

Mrs. Wadleigh taught in a private school in Melrose, Massachusetts from 1909 to 1910 and at Colby Academy, New London, New Hampshire from 1910 to 1914.

She is survived by her husband, Joseph B. Wadleigh, former scout executive of the Worcester Area Boy Scout Council; and a son, Robert, of Worcester. Mrs. Wadleigh's grandfather, the Reverend William Harrison Eaton, was awarded an honorary doctor of divinity degree by Colby in 1903.

She was a member of Chi Omega and for many years a valuable and enthusiastic class agent for the Colby Alumni Fund.

1911 Sinia King Leach died November 5 in a Roslindale, Massachusetts hospital.

Born in Mount Holly, Vermont, Mrs. Leach taught from 1912 to 1923, having assignments in Sabattus High School, Bridgton Academy, and Berlin (New Hampshire) and Burlington (Vermont) high schools.

She was a member of Chi Omega sorority.

Surviving are her husband, Ernest, organist and choirmaster of the Emmanuel Episcopal Church, West Roxbury, Massachusetts; a daughter, Mrs. Eleanor Leach Carlson, Newton Highlands, Massachusetts; a brother, Ralph King, '16, and sister, Mrs. Florence E. Gould, '08, both from Newton Center; and three nieces, Dorothy Gould Rhoades, '36, Marjorie Gould Murphy, '37, and Ruth Gould Stebbins, '40.

1912 Susan Wentworth Leonard, 47, died November 26 at a Portland hospital after a long illness.

Born in Standish, Maine, she was salutatorian of her class at Westbrook High School in 1907 and did graduate work in education at Bates College, Gor-

Compliments of

Howard B. Crosby

Compliments

of

ANGELO E. DIVERSI

WATERVILLE

FRUIT & PRODUCE CO., INC.

Sanger Avenue

WATERVILLE, MAINE

SAVE WITH

WATERVILLE SAVINGS BANK

Waterville, Maine

BOOTHBY AND BARTLETT

GENERAL INSURANCE

185 Main Street

WATERVILLE - - MAINE

MAINE FREIGHT

Moves By

MAINE FREIGHTWAYS

WATERVILLE - PORTLAND - BOSTON

George H. Sterns, '31

Fred J. Sterns, '29

Herbert D. Sterns, '41

STERNS DEPT. STORES

WATERVILLE - SKOWHEGAN

"The Stores of Famous Brands"

ham State Teachers, Farnington State Teachers and Boston University.

Mrs. Leonard had teaching assignments in Bethlehem, New Hampshire and in various Maine communities. From 1942 to 1950, the year she retired, she taught fifth grade at the Bridge Street School in Westbrook.

Her husband, Frederick M. Leonard, died in 1932. She is survived by a cousin, Mrs. Josephine E. Hess, Hamden, Connecticut. Mrs. Leonard was a member of Alpha Delta Pi.

1913 Robert Patton Wildes, 67, died November 7 at Santa Barbara, California, following five years of illness.

Dr. Wildes attended Colby from 1909 to 1910. He practiced dentistry in Denver, Colorado for twenty-five years, prior to moving to Santa Barbara in 1951.

Born in Skowhegan, Dr. Wildes received his dentistry degree from Tufts in 1917. After two years with the Army Dental Corps, he entered the U. S. Public Health Service leaving in 1922 for private practice in Denver.

Surviving are his widow, Clara; three children: Mrs. Dorothy Mullen Overall, Santa Barbara, Mrs. Mary W. George, Maracaibo, Venezuela, and Lt. Robert Patton Wildes, Jr., Stewart Air Force Base, New York; and three brothers.

Memorial funds sent to his family in lieu of flowers have been given by his widow to Colby in his name.

1915 Robert McGuffie, 64, died suddenly December 9 while aboard his lobster boat near Mark Island, Maine.

Mr. McGuffie attended Colby from 1911 to 1912 and, except for a year which he spent in Scotland, he lived in Stonington throughout his life.

He was, for a time, a school teacher, but in recent years he had been a fisherman.

Surviving are his widow, the former Florence Donald; a daughter, Mrs. Evangeline Knowles; and two grandchildren, all residents of Stonington.

1916 Burton Byron Blaisdell, 60, died December 1 at Miles Memorial Hospital, Damariscotta.

He was born at Bristol, Maine and graduated from Bristol High School in 1912. At Colby he was editor of the *Echo*.

Since 1920 Mr. Blaisdell has been in the general insurance and real estate business at New Harbor.

Surviving are his widow, the former Laura Kelsey; a brother, Simon; two daughters, Mrs. Phoebe Farrin, '44, and Mrs. Elizabeth Lane, '52; and four grandchildren, all of New Harbor.

He was a member of Phi Delta Theta.

A Matter of Will Power

Colby is stronger today for the support it has received from alumni and friends. Many who have wanted to commit their resources to the establishment of influences which are everlasting have named Colby College their beneficiary.

THE LINCOLN OWEN LIBRARY FUND, in memory of a member of the Class of 1889, has been established through the bequest of his widow, who died last fall at her home in West Roxbury, Massachusetts. Mrs. Owen, the former Alice Drummond of Waterville, left a \$5,000 fund, the income to be used "to buy books for the college library."

One of the best known and beloved teachers in the Boston schools, Mr. Owen died in 1922. Immediately following graduation from Colby, he served as principal for four years at Waterville High. In 1893, he was named principal of Rice Grammar School in Roxbury, filling that post for twenty-nine years until his death.

1916 Rhonello Conant Hackett, 62, died November 15 at his home in Waterville. He had been in failing health for the past four years.

Mr. Hackett, who had lived in Waterville since 1910, attended Colby from 1912 to 1913 before transferring to the University of Maine. He had been owner of the Hackett Paper Company since 1930.

Survivors include his widow, the former Florence Gove; a son, Frank, and three grandchildren.

1918 Eugene Fuller Ellingwood, 60, died October 28 in a hospital at St. Johnsbury, Vermont.

Mr. Ellingwood attended Colby from 1914 to 1915 and from 1916 to 1917. He was founder of the St. Johnsbury Community Television Corporation and, as owner of the Reliance Electric Company, one of the town's leading businessmen. He had been in retirement since early 1954 because of poor health.

Born in Caribou, he left Colby to serve with the army overseas. He went to St. Johnsbury in 1937 as district supervisor of the Mutual Benefit Life Insurance Company continuing in that business until 1942.

Surviving are his widow, the former Florence Hodgdon; a daughter, Mrs. Judith Daigneault; a son, Eugene F. Ellingwood, Jr., '46; and three grandchildren.

1919 Anna Anderson Beverage, 59, died December 8 in Meriden, Connecticut.

Born in Dover-Foxcroft, she was appointed principal of North Haven High School following her graduation from Colby.

She married Arthur W. Beverage in 1920. They made their home in North Haven until 1942, when they moved to Meriden.

Surviving are her husband; a son, Arthur W., Jr., Arlington, Texas; a daughter, Grace (Mrs. Paul E. Stanley), Wallingford, Connecticut; four grandchildren; and three brothers, John, Portland; Wendell, '38, Portland; and Bion A., Jr., '36, Tacoma, Washington.

She was a member of Delta Delta Delta.

Hon. 1926 Robert Lincoln O'Brien, 90, former chairman of the United States Tariff Commission and former publisher of the *Boston Herald*, died in Washington, D. C., November 23.

Mr. O'Brien was an outstanding figure in New England journalism from 1895 to 1928. Thereafter he became a key personality in the political and economic controversy that raged around American tariff policies from 1931 to 1937, when he headed the tariff commission.

For many years he was a member of the advisory board of the Pulitzer School of Journalism at Columbia University. Colby awarded him the honorary degree of doctor of humanities.

1931 Barbara Heath, 46, died October 31 in the George Washington Hospital, Washington, D. C.

Born in Newington, Connecticut, she was a graduate of Hopkinton (Mass.) schools, and for the past twelve years had been affiliated with the Army Map Service in Washington.

Survivors are her parents, Mr. and Mrs. Herbert Heath, Washington, D. C.

ROLLINS - DUNHAM Co.



Dealers in

HARDWARE, PAINT, BUILDERS' SUPPLIES

FARM SUPPLIES - HOUSEWARES

WESTINGHOUSE APPLIANCES

29 FRONT STREET, WATERVILLE, MAINE

Compliments of

KEYES FIBRE COMPANY

Manufacturers of

MOLDED PULP and

FIBROUS PLASTIC PRODUCTS

WATERVILLE

MAINE

CASCADE Woolen Mill


OAKLAND - MAINE

MANUFACTURERS OF

WOOLENS

LETTERPRESS

OFFSET LITHO.

 **THE KNOWLTON & McLEARY CO.**
FARMINGTON, MAINE

TEL. 4455

PRINTERS SINCE 1871

Waterville Morning Sentinel

Complete News Coverage of Colby
and Central Maine

SENTINEL ENGRAVERS

Photoengravers for the Alumnus

Zinc and Copper Halftones • Line Plates

Four Color Process Plates • Offset Plates

Complete Art Service • Photographic Copy Service

LEVINES

The Store for Men and Boys

WATERVILLE, MAINE

Ludy, '21

Pacy, '27

Colby College

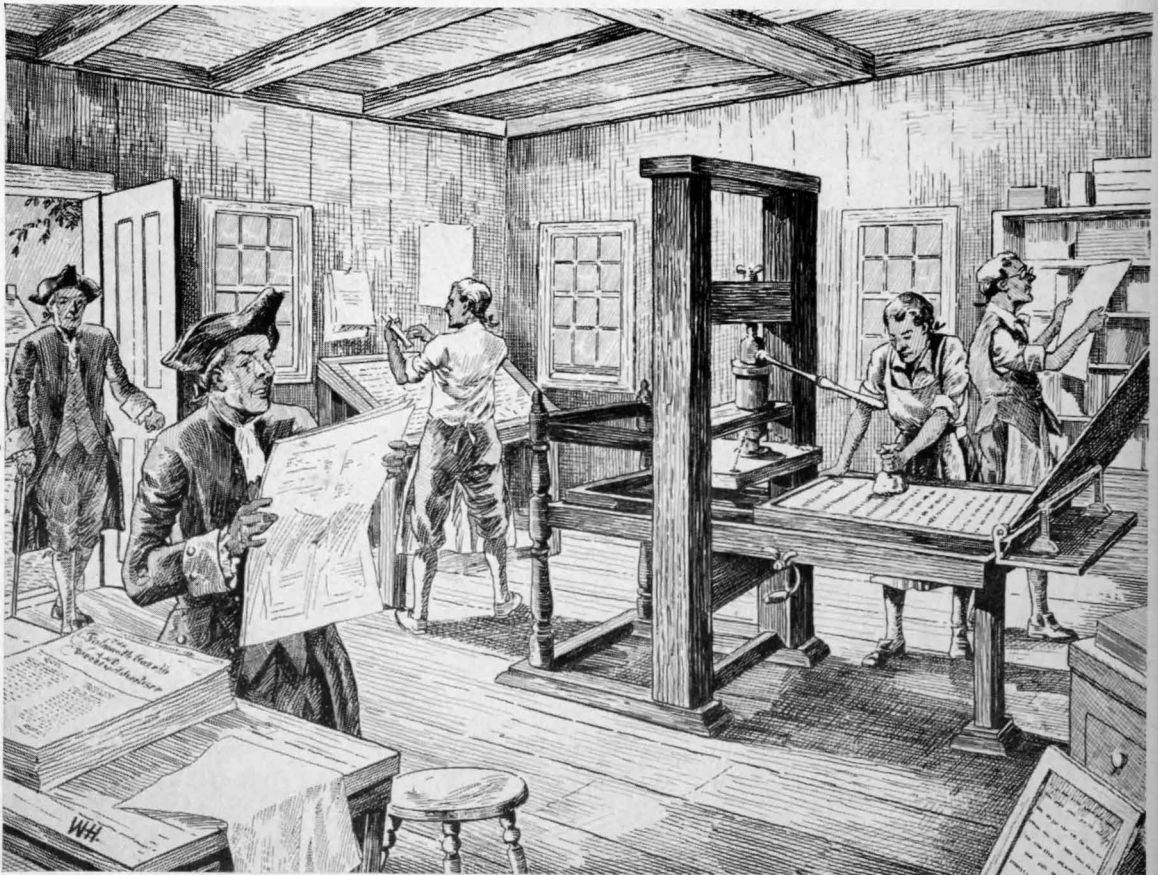
BOOKSTORE

YOU CAN ALWAYS DEPEND ON

Sealtest Ice Cream

Tel. Waterville TR 2-2262

E. F. HIGHT, Mgr.



REPRODUCTION FROM A COLOR PRINT. FROM A SERIES, 'HISTORICAL EVENTS OF PORTLAND.' COPYRIGHT 1948, THE CANAL NATIONAL BANK OF PORTLAND, MAINE

The First Newspaper

Portland's first regular newspaper was called the Falmouth Gazette and Weekly Advertiser. Volume I, No. 1, is dated January 1, 1785. Benjamin Titcomb and Thomas B. Wait were responsible for this endeavor, which continued from that date for some years after.

The first issue, which may be seen at the library of the Maine Historical Society, is of four pages, somewhat smaller than our present-day newspapers, but larger than what we know today as "tabloid" newspapers. It has a very deep masthead and three columns of type.

Even the first issue contained advertisements. One Abraham Osgood "from London" offers an assortment of "English Goods and Hard Ware to be sold FOR CASH CHEAP at his store on King-Street (now Congress)." In another, James Fosdick "at his Store in Middle-Street offers an assortment of English and West-India goods, Philadelphia Bar-Iron, New England Rum per Barrell . . ." also for CASH.

Further on, William Pratt "from London has just imported in the brigantine John, a quantity of goods, for which cash will be given . . . inquire at the Store of Joseph McLellan and Son."

There's a "Public Notice that the Court of General Sessions of the Peace stands adjourned to Wednesday at three o'clock at the House of Mr. Alice Greele . . ."—evidently typographical errors being common in those days, as now.

The left hand column on the front page carries a notice:

"TO THE PUBLIC: From the generous encouragement of a number of Respectable Gentlemen in Falmouth . . . we have undertaken to Publish a weekly News Paper . . . We hope it will meet with General Approbation . . ."

And this plea:

"Our Subscribers will recollect . . . this Gazette, three months in advance was to be Paid on receiving the First Number. If to avoid the inconvenience of making just this Sum any Gentleman should be inclined to pay three Shillings, or any larger Sum, he shall be credited with the Same . . . and, as the Setting up of this Press has been attended with some extraordinary Expense, will be Thankfully received."

BUILDING WITH MAINE FOR 130 YEARS

THE CANAL NATIONAL BANK OF PORTLAND

Main Office, 188 MIDDLE ST., PORTLAND, ME.

Branch, 14 CONGRESS SQ., PORTLAND, ME.

Branch, 93 MAIN ST., YARMOUTH, ME.



COMPLETE FINANCING, TRUST & BANKING FACILITIES

Member Federal Reserve System • Member Federal Deposit Insurance Corporation

