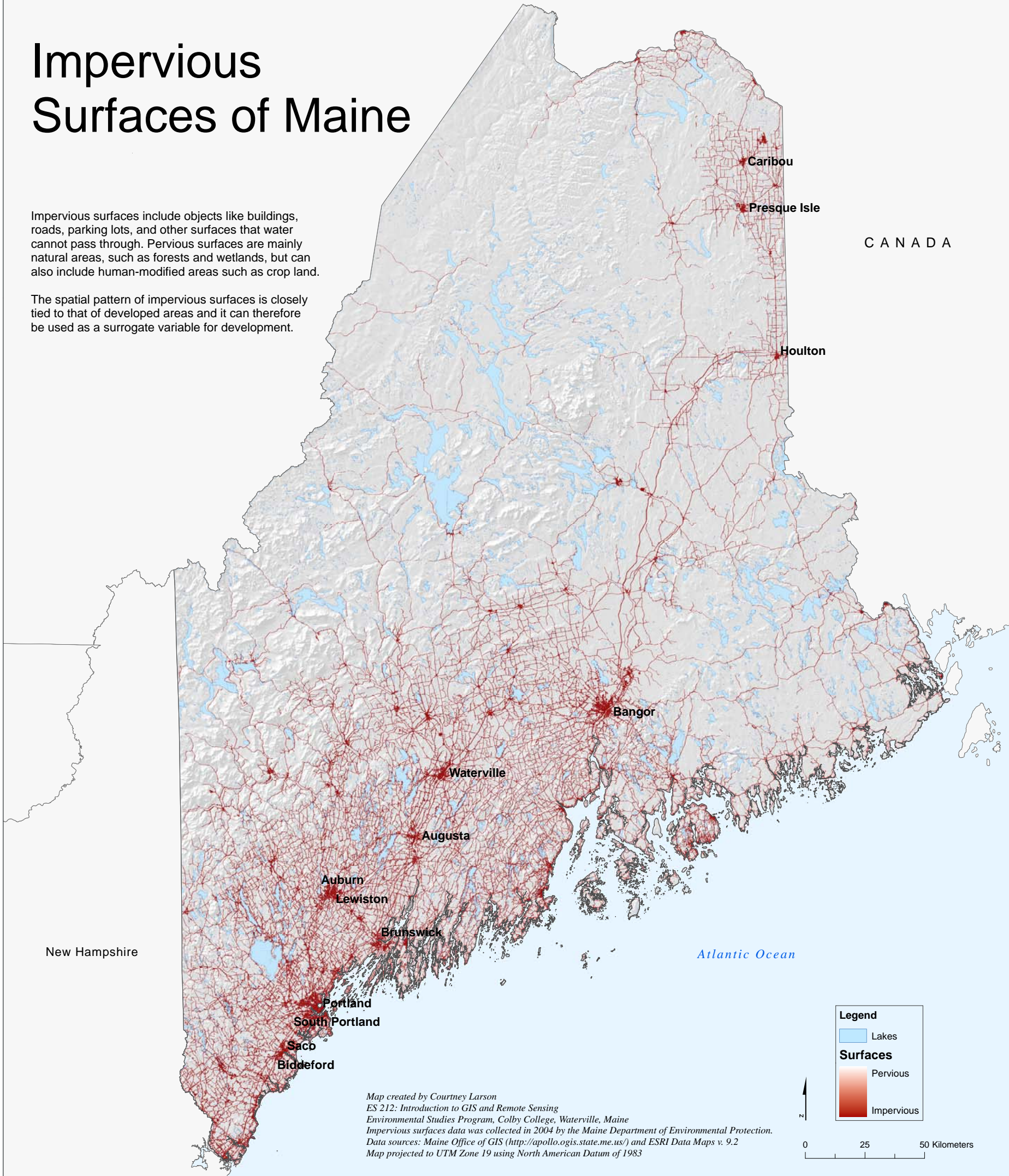


# Impervious Surfaces of Maine

Impervious surfaces include objects like buildings, roads, parking lots, and other surfaces that water cannot pass through. Pervious surfaces are mainly natural areas, such as forests and wetlands, but can also include human-modified areas such as crop land.

The spatial pattern of impervious surfaces is closely tied to that of developed areas and it can therefore be used as a surrogate variable for development.



Map created by Courtney Larson  
ES 212: Introduction to GIS and Remote Sensing  
Environmental Studies Program, Colby College, Waterville, Maine  
Impervious surfaces data was collected in 2004 by the Maine Department of Environmental Protection.  
Data sources: Maine Office of GIS (<http://apollo.gis.state.me.us/>) and ESRI Data Maps v. 9.2  
Map projected to UTM Zone 19 using North American Datum of 1983

**Legend**

- Lakes
- Surfaces**
- Pervious
- Impervious

