

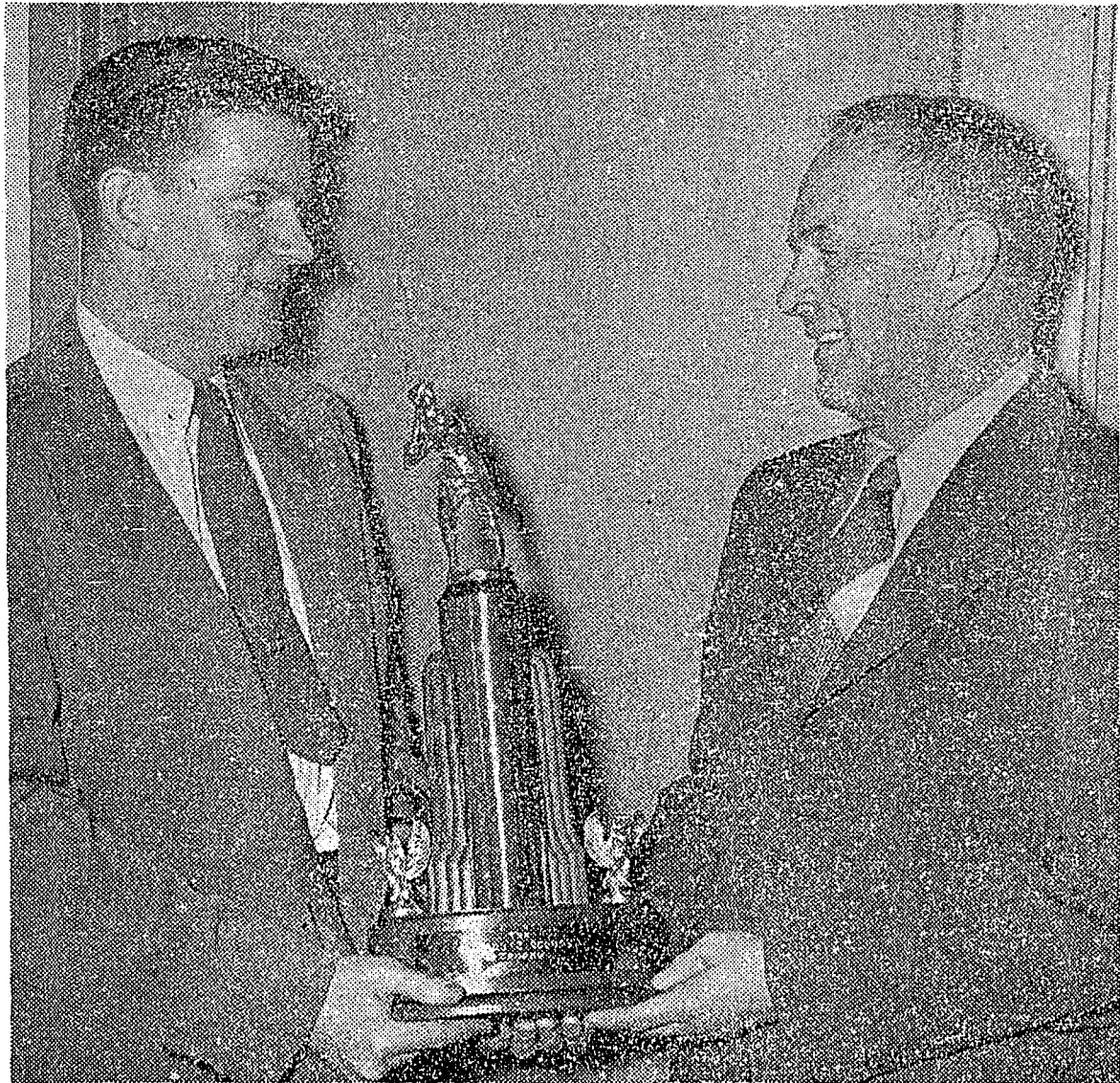
# CAMPUS CHEST TO OVERFLOW; GOAL: "TOP 4500"

## The Colby Echo

Published Weekly by the Undergraduates of Colby College

2266 VOL. LII WATERVILLE, MAINE, WEDNESDAY, FEBRUARY 23, 1949 NO. 14

### Lettermen Of '47 And '48 Honor Coach Roundy



THE EDWARD C. ROUNDY TROPHY is being presented to Coach Roundy by Carl Wright '47, in ceremonies held during the half at the Devens game last night. A replica of the trophy will be presented to the best baseball player each year. Story on page 7.

### Charities To Receive Gifts From Colby Students; Many Activities Planned; Pledge Captains Chosen

Colby Campus Chest Drive will open its campaign Saturday, February 26, to continue until Saturday, March 5.

The purpose of the drive is to combine all charity drives which affect the students into one group.

The organizations which benefit from the money received are: World Student Service Fund; China Relief; Near East Foundation; United Jewish Appeal; Care; Cancer Fund; Anti-Tuberculosis; Maine Seacoast Missionary Society; Pine Tree Cripple Children Society; and the Colby Fund for Foreign Students.

**No Limit On Donations**  
Pledge captains have been appointed in each dormitory to collect the donations from the students. There is no limit on the amount that each student should give.

A program of activities has been scheduled for the week of the campaign. Saturday February 26 there will be a dance at Roberts Union with Al Riefe's orchestra after the Colby-Maine game. Sunday evening at 8:00 P. M. in the Women's Union the Colby Community Orchestra will give a benefit concert under the direction of Dr. Ermanno Compagetti.

**Sadie Hawkins Dance**  
Faculty bus-boys will serve at dinner in the Women's dormitories Monday. Tuesday the Faculty show, "Notes of Derangement" will be given in the Women's Union at 8:00 p.m. Delta Delta Delta will sponsor the Sadie Hawkins dance with Al Riefe's orchestra Thursday in the Women's Union. Friday evening there will be a bridge tournament for the Waterville alumni in the Women's Union.

**Carnival Final Event**  
The final event of the week will be a Carnival under the direction of the Greek Letter Council. Charles Cotton '49 and Mary Gardner '49 are co-chairman of the drive.

Those on the planning committee are as follows: Claire Rosenston '49, Helen Leavitt '51, Richard Barta '51, Joseph Neidzinski '51, and Richard Johnson '51.

### Miss Coburn Wills Two Gifts To Colby

Colby was the recipient of a twenty two thousand dollar bequest under the will of Miss Louise Coburn. The will has been filed for probate.

The sum of \$20,000.00 is to be used in the construction of any of the new buildings which may be erected for the women, or, at the option of the Trustees of the college, the amount may be added to the endowment fund and the income applied to the maintenance of any building used for the women of Colby.

A second bequest, of two thousand dollars was left for the payment of prizes under the Coburn Speaking Contest.

Colby also announced a bequest to the College of over six thousand dollars from the estate of Lillie C. Hemphill of Houlton, Maine.

### Prominent Educators Will Speak At Future Career Conference Here

The career conference of March 11 and 12 will present three prominent men in the field of education.

Dean Mark I. Shibles, Dean of Education at the University of Maine, Mr. Ermo H. Scott, in charge of procuring teaching services for the Maine State Department of Education, and Mr. Bertrand W. Hayward, Director of the Philadelphia Textile Institute, will be the featured speakers.

#### Colby Graduate

Dean Shibles was graduated from Colby in 1929, and has taken further study at Boston University and at Harvard, where he received his doctorate. He has served as principal in many Massachusetts schools, and as superintendent of the schools in Belmont, Massachusetts.

He has, in addition, held positions as director of the New England Superintendent Society, editor of the Harvard Educational Review, and president of the Belmont Rotary Club.

#### Working For Doctorate

Mr. Scott is working now at New York University for his doctorate, after having received degrees from the University of Maine. He has served as president of Vermont State Teachers' College, and as Head of the Department of Higher Education at New York University.

Mr. Hayward was graduated from Colby in 1933. He has been the principal of four high schools, the last of which was at Fitchburg, Massachusetts.

Each of the three men will present a picture of a different level of education probably to be divided in the following manner. Dean Shibles will discuss higher education, Mr. Hayward, secondary education, and Mr. Scott, primary education.

### Hill Fund Campaign Aimed at 'A' Target

The \$3,550,000 Mayflower Hill Development Fund campaign has inaugurated the drive towards the first of its dual goals.

The "A" objective of \$1,750,000 is to unify all college activities on the hill, and the second goal, the "B" objective, is to implement Colby's educational program. The second goal is for \$1,800,000.

#### Bus System Costs \$17,000

At present, less than 50 percent of the 1,080 students can be housed on the Hill. Annually an amount in excess of \$17,000 is being taken from educational activities for the bus system.

Organizations of Colby Alumni and friends have been set up in different cities to meet the demands of the drive.

Colby students have formed their own organization to solicit a \$15,000 quota, while the faculty and staff have made \$6,000 their aim.

#### Drive Dedicated To Johnson

Mr. Louis Collier and others heading the drive announce that the campaign is progressing as steadily as anticipated but that there is much hard work ahead.

The drive is dedicated to Dr. Franklin W. Johnson, president-emeritus, and honorary chairman of the development fund, who, it has been said, has done more than any single person towards the unification of Colby on the hill.

### Students Fail To Respond To Need For New Song

A contest for a new Colby song was sponsored last semester by the Student Government with the result that only two songs, written by the same person, were submitted.

As these songs, while good, were not lively enough for group singing, especially at football games, no song was chosen.

Student Government plans to hold another contest in the spring.

#### Council Report

### Frosh Vote This Week; Bridge Tourney Begins

Student Council announced at the meeting Monday, February 21, that the Intercollegiate Bridge Tournament preliminaries will start Wednesday, February 23, at 4:00 p.m. in Roberts Union. The finals will be played Friday, February 25, at 7:30 p.m. Professor Philip Bither will be in charge.

Elizabeth Jennings '50 was appointed to represent the Student Council on the committee for the spring weekend.

Freshman elections will be held this week under the direction of Marjorie Austin and Allen Davis, freshmen representatives on the Council.

Plans were started for an assembly sponsored by the Student Council on Tuesday, March 25. The purpose of the assembly will be to give the student body an explanation of the activities and responsibilities of the organization.

### Fund Planned To Aid Foreign Students Here

Colby College has started a Fund for Foreign Students with the purpose of supporting two foreign students at Colby.

This new fund takes the place of the UN Drive for Children which has been dropped from the Campus Chest's list of donations.

The students will come to Colby through the International Institute of Education. It is planned that the various organizations pay for the room and board of one boy student and one girl student.

The tuition will be taken care of by the Administration, and the Campus Chest plans to donate 4.5% of the Drive money received for extra expenses.

### Newman Sponsors Hobo Dance Thurs.

The Colby Newman club has announced plans for a "Hobo Dance" open to the entire college. "Informal dress" will be the accepted fashion.

The dance will be held Thursday February 24th with Al Riefe and his orchestra providing the musical background in the Alumnae Building.

"The Hobos" will reign from 7:30 to 11:00.

Refreshments will be available to add to the gala evening. Admission is to be only 50c a head with a large turnout expected.

### Student Members Chosen For Curriculum Comm.

Student Government, in continuing a project begun last year, has appointed new members to the Student Government Curriculum Committee.

The purpose of this committee is to gather together different student opinions and view points on various matters connected with campus activities.

#### Compiled Into Pamphlet

This information will then be compiled into a pamphlet and will be sent out to each incoming freshman. The upperclassmen will also have an opportunity to buy one of these pamphlets.

The committee will meet every one or two weeks, and each month they will meet with their faculty advisors who include Professor George W. Smith, Professor Donaldson Koons, and Professor Walter N. Breckenridge.

Joan Hongland '49, was chosen as chairman for the group which is comprised of Alvin Schwartz '49, Donald Nicoll '49, Hilda Farnum '49, Roger Prince '50, and Barbara Starr '50.

### Past Varsity Show Songs Planned For Radio Spot

Campus Chest is sponsoring the Colby radio program Monday, February 28, from 9:00 p.m. to 9:30 p.m.

The program will feature songs from the three Colby Varsity Shows; "Let There Be Men" '47; "Lucky To Be Me" '48; and "Tones of Amazement" '49.

#### Called "Memory Night"

The songs to be featured are: "Let There Be Men", "I Want to go to Bed with Shakespeare", "The Stars are Beautiful Tonight", "Reality", "There I Go", "Lucky To Be Me", "When You are Far Away", and "I Want a New Romance".

Kenneth Jacobson '50 will accompany the singers who will be Hope R. Harvey '49, Elizabeth Beamish '49, Martha Jackson '49, Robert Wilkins '51, Nancy Semonian '49, Ellen Kenerson '50, and Conrad White '49.

The program will be called "Memory Night" and will recall incidents, songs, and stars of the past Varsity Shows.

### "Democracy's Chance In China" Topic Of Dr. Hung In Thursday's Gabe Lecture

The speaker for the second Gabrielson lecture will be Dr. William Hung of the Harvard-Yenching Institute. He will discuss "Democracy's Chance In China". This lecture will be held on Thursday February 24 at 4:00 p.m. in Roberts Union.

Dr. Hung, considered an authority on Chinese affairs, has been in the United States for two years on leave from his duties at Yenching University in Peking. He has been serving as visiting lecturer at Harvard University, and other schools throughout the country.

Dr. Hung was born in Foochow, China, graduated from Anglo-Chinese

College in Foochow, and later from Ohio Wesleyan University in 1917, from Columbia University in 1919, and from the Union Theological Seminary in 1920. Following this, he held the position of Secretary of the Board of Missions of the Methodist Episcopal Church.

#### On Faculty Of Yenching University

Since 1922, he has been a member of the faculty of Yenching University, making many trips to the United States, always speaking extensively.

Dr. Hung's Maverick Lectures at Ohio Wesleyan University in 1947 are soon to be published in book form.

## Will There Be A One Night Stand For These Stage Luminaries???



ARE THESE THREE FACULTY MEMBERS (from left to right, Prof. Eustis, Miss Runnals, and Prof. Gates) starring in the coming Campus Chest Faculty Show? Who else from the ranks of the erudite will be in the production Tuesday, March 1? Your guess is as good as ours, but anyway you look at it the laughs will be there.

Finest Quality Dry Cleaning Service  
Which Will Satisfy  
Colby Students

**Admor**  
CLEANERS-DYERS

156-158 Main Street

## Prize Winning Photos On Display In Library

Prize-winning photographs of the second annual All-Maine Salon are on display in Miller Library. The prints were loaned to the Colby Camera Club by the Portland Camera Club, sponsors of this yearly exhibit. These pictures will be on display approximately two weeks.

Campus Chest—Top 4500

## Professors To Stage Drive Entertainment

Tuesday evening, March 1, at 8:00 p.m. in the Women's Union the faculty is sponsoring the show "Notes of Derangement" with an all-star faculty cast.

The title is a take-off from the Varsity Show, "Tones of Amazement".

The program will be a full evening's entertainment consisting mainly of short skits. All money received will be given to the Campus Chest Drive.

Professor Everett Strong and Professor Gordon Smith are in charge of the show.

## Student Religion Statistics Released

Statistics on the religious composition of the student body at Colby have recently been released through the office of Walter Wagoner, Chaplain. The breakdown is as follows:

Protestant	744	68%
Catholic	184	17%
Jewish	74	7%
Islam	1	
None	82	8%

Percentage statistics comparing the number of men to women by the various faith groups are:

	M	W
Total college	61%	39%
Protestant	53%	47%
Catholic	77%	23%
Jewish	74%	26%
None	72%	28%

Campus Chest—Top 4500

## Colby Representatives Will Discuss Religion At Yale Conference

Four students, four faculty members, and three administration personnel will represent Colby at a conference at Yale.

Problems and programs of religion and higher education will be discussed.

### Four Selected Schools

Colby, Wellesley, Wesleyan, and Yale were selected from all New England colleges and universities as the four schools having the most to offer in potential religious programs.

The representatives are as follows: Administration personnel; President J. Seelye Bixler, Chaplain Walter D. Wagoner, and Mr. William Bryan.

Faculty; Professor Donaldson Koons, Professor Norman Smith, Miss Margaret L. Buchner, Professor Herbert L. Newman.

Students; Thornton Merriam '51, Philip Lawrence '50, Helen Leavitt '51, Mary Goldey '50.

## Record Recital Planned For Colby Music Lovers

The first of a series of record recitals will be held at Smith Lounge in the Women's Union Friday, February 25 at 7:30 p.m.

The evening will be devoted to a program of music by Prokofiev. Prokofiev's "Third Piano Concerto", the "Lt. Kije Suite", and the Alexander Nevesky Cantata will be played.

The programs are to be on an informal basis, and little, if any, information concerning the composer will be given.

The purpose of these evenings is to provide music lovers with an opportunity to listen to records not found in the music room, and to hear less well-known compositions of the composers treated.

## HOTEL TEMPLETON

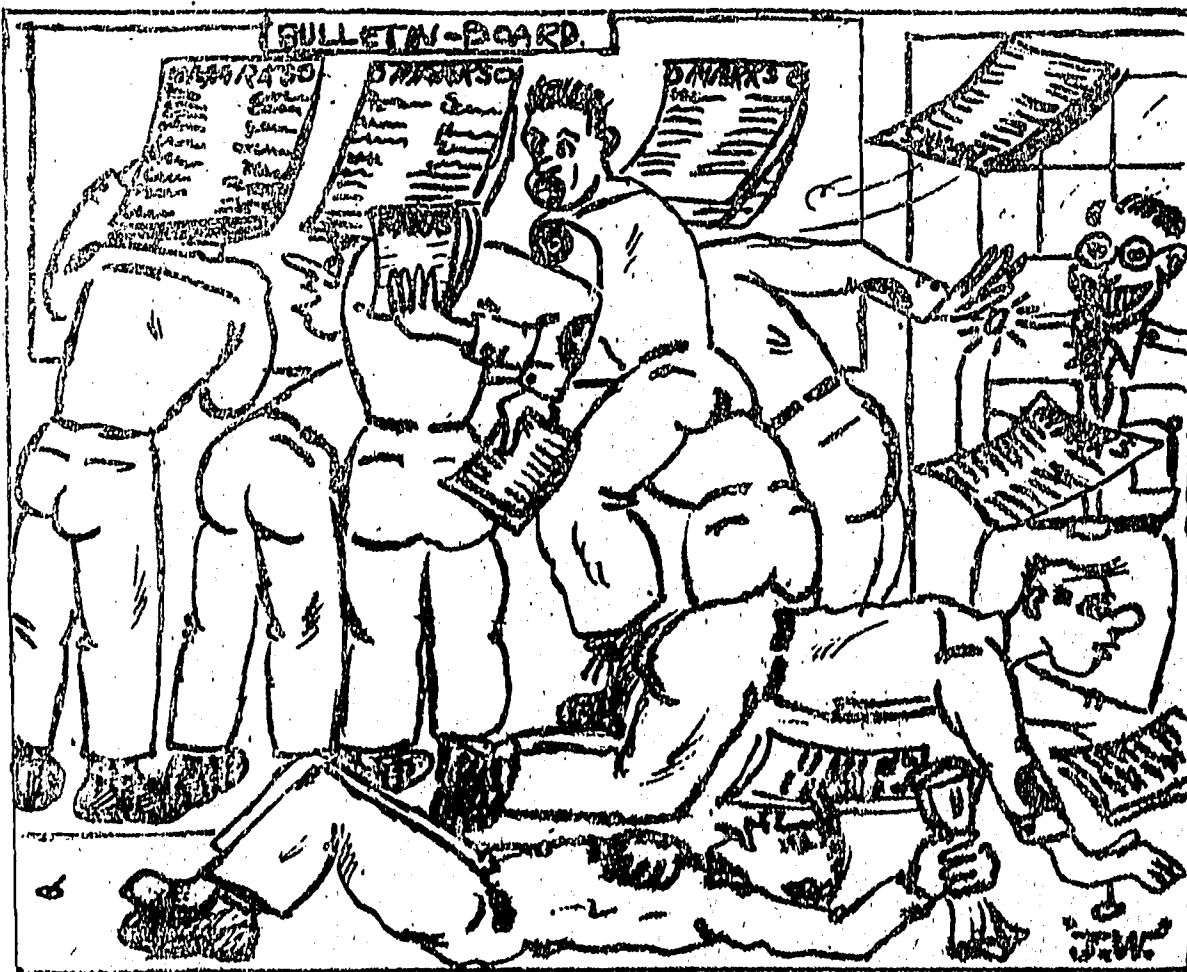
WHERE FINE FOODS

AND

BEVERAGES ARE SERVED

DANCING NIGHTLY

## The Daily Bulletin Cures "Bulletin-Boarditis"



## Charity Appreciates Colby College Gifts

The following are excerpts from acknowledgments of money received by various organizations to which the Colby Campus Chest donated money during last year's drive.

American Cancer Society: "—in acknowledgment of your generous contribution of \$403.25, we want to emphasize how sincerely we appreciate your support."

"This is substantial evidence of your interest in the war we are waging against the scourge of cancer".

### Combined Jewish Appeal

Combined Jewish Appeal: "We gratefully acknowledge receipt of your check for \$273.54 from the Colby Campus Chest. The check will be forwarded at once to the United Jewish Appeal who will disburse it among its three beneficiaries—United Palestine Appeal, Joint Distribution Committee and the United Service for New Americans".

The Pine Tree Society for Crippled Children Inc.: "Your check for \$489.36 has been received and on behalf of the Pine Tree Society for Crippled Children I thank you and the students, faculty and trustees of Colby College most sincerely for this generous contribution".

### Near East Foundation

World Student Service Fund: "I was happy to learn through the New York office of the receipt of Colby's check for \$1089.80 as a contribution to WSSF—We are grateful indeed for this expression of your interest and hope that by next fall we can let you see some of these dollars in action, for a WSSF film is in process of being made—"

Near East Foundation: "Near East Foundation is deeply grateful to the Colby Campus Chest Drive for its fine contribution,—"

United Service to China, Inc.: "We are deeply grateful to you for the latest contribution of \$206.73—your gift has arrived at a particularly opportune time, for the urgency of needs in China just now are greater than at any time before".

When the Carnival's pleasures are just muddy footprints in your mind... and an awful dent in your pocket book—Remember... Sid's is the

Campus Chest—Top 4500

cheapest joint in town. (This fact verified by the Society for the Prevention of Prevention.)

Let's  
Go to  
**Sid's**  
Things & Stuff



It's the  
Exclusively Yours  
**Berkeley Juniors**  
you saw in  
**GLAMOUR**

Beau Blessed...

You're graceful as a ballerina, with beckoning bustle-bow and collared bateau neckline. Coin dotted rayon Canton crepe with rayon taffeta collar and bow. Yellow or aqua with black; yellow with grey; aqua with brown. Sizes 9 to 15. \$00.00



## Burning The Scandal At BOTH Ends



We were jobbin' it up at the Tri Delta Shelta the other night when the housemother—swept in, grabbed us by our curfew, and we found ourselves adjusting our watches on the front porch.

We were struck by two things: the drastic notion that there is a dissimilarity of time-keeping on the campuses, and a stubborn hanger-on who was forcibly ejected by our mare as he was attempting to catch the last bus. Next day we found several layers of skin and four fingernails still gruesomely gripping the sill.

Well, anyway, we girded our loins for a trip to the upper campus that afternoon between 4:17 and 6:09, and caught the 2:15 bus which arrived right on time five minutes early. As we double clutched up the cliff in front of the library, we noticed the electrically operated eon smashers below the scow were 22 minutes fast. This gave us pause for thought—perhaps, after all, it would be better if the hands weren't set back. It seemed to us a symbol, philosophy 3-4, of an equalizing power. If the hands were allowed to race around the face rampant, in a few months they would be years ahead of us; in a few years, centuries ahead.

Now, if we took those centuries the clocks had gained and added them to the mental and moral age of the school, according to our computations (we did this sort of thing for the government last year and ended up in an uncomfortable tax bracket), Colby would end up somewhere near the middle of the 20th Century in its thinking and actions. Regardless of how philosophical we can get, we're still afraid that Colby has been caught with its pendulum down.



## The Eternal OPTIMIST

**MUZAK IS NEEDED AT COLBY.** Muzak (actually the trade name of the producing company) is recorded music that is piped into restaurants, factories and offices via telephone wires.

"THE TREMENDOUS ACCUMULATED LOSS (from Fatigue) each year is indicated by the amount of energy channelized into productive efficiency as shown in surveys of offices and plants using the scientific work programs of Muzak's functional music."

**WHY NOT MUZAK IN THE CLASSROOM?** "The 1812 Overture" would be apropos in history, and "Dry Bones" in the bio lab. "Buckle Down Winsocki" or "On To Victory" would be good for football practices, and "Why Not Me" when business representatives interview seniors.

**MAYBE IF WE PLAY "THE STAR-SPANGLED BANNER"** we will even get a Flag on our Memorial Flagpole . . .

**FUNCTIONAL MUSIC ON THE FUNCTIONAL CAMPUS.** Muzak and its "channelized energy" is the answer to our problems. With Muzak, Phi Betes will be initiated in two shifts, football teams will go to the Rose Bowl, and Colby men and women will bring even more "honor and fame" to their Alma Mater.

**IN SHORT, WITH MUZAK WE WILL GAIN BACK** the "amazing amount of energy lost each day . . . because of mid-morning and late afternoon fatigue, noise fatigue, boredom, and nervous tensions". Hm-m, this DOES sound good.

**LOUISE COBURN HALL'S D.A. IN GUN FIGHT** (News Item):—It seems that LCH's District Attorney disguised herself as bell girl one afternoon last week. She then shadowed several male suspects as they entered the LCH living room, and a gun battle ensued.

**OFF THE RECORD, WE LEARNED THAT** the D. A. was quite surprised when the shots of her multi-squirt aquamatic pistol were returned by concentrated snowball fire. It seems that she did not expect the men to be armed. Consequently, no arrests were made, and LCH's D.A. returned to her bells.

**MORAL: BEWARE OF THE BELL GIRL,** like every other woman, she is unpredictable and therefore dangerous.

## The Colby Echo

The Colby ECHO was founded in 1877, and is published weekly during the college year by the students of Colby College. The ECHO is a member of the Intercollegiate Press, and is a charter member of the New England Intercollegiate Newspaper Association. It is entered as Second Class Matter at the Post Office in Waterville, Maine. The subscription price for students is \$2.50, for all others it is \$3.00.

**EDITOR-IN-CHIEF** . . . . . ALVIN SCHWARTZ '49

### EDITORIAL BOARD

**MANAGING EDITOR** . . . . . FRANCES BENNER '49

**NEWS EDITOR** . . . . . ROBERT ROSENTHAL '50

**FEATURE EDITOR** . . . . . CYNTHIA CROOK '49

**REWRITE EDITOR** . . . . . NANCY ARDIFF '50

**MAKEUP EDITOR** . . . . . GERALD B. FRANK '50

**SPORTS EDITOR** . . . . . ROBERT BLAVITT '49

**EDITORIAL ASSOCIATES:** Gerald Baker, Mary Bracy, James Diek, Jay Hinson, Philip March, Alan Mirkin, Nancy Ricker, Maurice Ronayne.

**MAKEUP ASSISTANT:** Robert Reed.

### BUSINESS BOARD

**BUSINESS MANAGER** . . . . . WILLIAM G. HURLEY '49

**ADVERTISING MANAGER** . . . . . BARBARA STARBUCK '49

**CIRCULATION MANAGER** . . . . . JOAN DONNELLY '49

**SUBSCRIPTION MANAGER** . . . . . ANN JENNINGS '49

**FACULTY ADVISER** . . . . . SPENCER WINSOR '40

## Editorials

### Lethargia . . .



Goya

To a certain extent we are aware of world suffering, misfortune, need, desire, thirst.

For most of us these conditions, because of constant presentation, have melded into a vast, slightly irritating blur. And in most cases, this blur has come to be completely ignored.

The annual awakening jolt, the prod that arouses charitable sensibility and feeling of responsibility to self and community, has been for Colby and the world outside—a community chest drive.

We can be likened, before such a drive, to Goya's "Giant, Sleeping Colossus"—aware, able to act, but unwilling and unconcerned. And as a result of such a campaign, we can usually pride ourselves on no more than the opening of one eye. It is rare when more is accomplished, or expected. Last year's goal fell short of its \$4500 mark by ten per cent.

This year an optimistic student committee has set the mark even further away.

Realization of such expectations will come only with active, generous student participation. We hope the student will justify such optimism.

AS

### Teddy's Big Stick . . .

Plans are little more than pipe dreams until executed. Once executed, they are a farce unless followed through. The college last fall presented and executed a commendable plan for parking and traffic regulation on Mayflower Hill. The follow-through, however, was poor.

For a month or so at the start of the year, regulations were enforced five and one-half days a week. Nights, Sundays, and Saturday afternoons the "Campus Cop" never seemed to show himself. At these times one-way and no parking signs were ignored, and cars were habitually parked on or driven across the lawns. With the winter months, the follow-through of the college's plan ceased for all practical purposes.

We believe that traffic regulations at Colby should be enforced again immediately, and that this enforcement should be by means of the Big Stick, viz.: one warning, fines, and removal of the car from campus, in that order.

The Big Stick has been shunned by the administration in the hope that driver co-operation would do the job. This hope is an admirable one, but we think that the gross disregard of traffic regulations over the past two years proves the failure of the present system and the need for a more forceful one.

A realistic attitude should be taken towards the problem of enforcing Colby's traffic and parking regulations. A good plan was devised; only Teddy's Big Stick is needed to make it work.

GBF

### To Err Is Human . . .

In the February 16 issue of the ECHO it was erroneously implied that Robert Burkhardt '49 had entered without competition his "Critic", in the third International Sculpturing Exhibition to be held in Fairmont Park, Philadelphia. Mr. Burkhardt's piece was one of three hundred selected from a world-wide field of five thousand competing for such exhibition.

We congratulate Mr. Burkhardt on the magnitude of his accomplishment and wish "The Critic" every success.

Campus Chest—Top 4500

Campus Chest—Top 4500

## Weathervane



### Modern Art: What Is It?

By June Stairs '49

Recently Colby students have been exposed to a considerable amount of modern art. The general reaction has been one of bewilderment—the usual query being, "What is it?"

The purpose of modern art is not to be confused but rather to bring order out of chaos. The modern artist differs from artists of previous times in that he has the extremely difficult task of communication in a complex culture.

#### Art Must Be Intricate

His art, therefore, must be intricate in order to incorporate and sum up the various aspects of twentieth century civilization.

With the rise of technology and psychology the trend has been one of searching beneath the surface of mechanisms and personalities to find truths. Art, in reflecting its time has applied the same technique.

#### Delves Beneath Surface

The modern artist delves beneath the surface of an object to the very elements of which it is composed. He flattens, thus-distorting, objects so that all sides and aspects may be seen simultaneously.

He creates movement on a flat surface by the intersection of planes and masses. He displaces and rearranges the sections of his subjects to reinforce this movement. In the finished product of art the subject matter is often completely obscured, much to the consternation of the observer.

#### Subject Matter Negligible

However, the subject matter is a negligible factor into the artist. It merely serves as the starting point from which all else follows.

In modern art the important thing is to feel and appreciate the design and color. Of course, the feeling art inspires is a personal thing and will vary with individuals. (Continued on Page 4)



## As The Faculty Sees It

By Ernest Marriner

### Graduate Record Examinations

Every year since the end of the War the proportion of Colby graduates seeking entrance into advanced schools has steadily increased. So many men and women now graduate from college that the bachelor's degree no longer suffices for employment in many fields. It is important, therefore, that Colby undergraduates seek information (early in their college course) about graduate and professional schools.

The office of Dean of the Faculty serves as the focal point for information about graduate schools in general, but the individual advisers are also prepared to guide Colby students in seeking admission to specific schools.

Even professional schools of the same kind differ so much from each other in their requirements, their regulations, and their offerings, that a prospective applicant must exercise great care.

The most important innovation of the graduate schools is their use of standard, objective examinations.

All of the leading graduate schools of Arts and Sciences now require the Graduate Record Examination; all of the Class A Medical schools in the United States and Canada require the Medical College Admission Test; and the twenty-two leading law schools in the country require the Law School Admission Test.

The Graduate Record Examination and the Law School Admission Test are given three times a year, in October, February, and May. The Medical School Admission Test is given twice a year, in October and February.

Because the Graduate Record Examination requires two testing days each time it is given, and because the February date usually falls during the Colby examination period, that examination is seldom given at Colby in February, but only in October and May.

The testing dates of all these examinations for graduate and professional schools are set far in advance by the Educational Testing Service, which has charge of this examining for the graduate schools. Applications must reach the Testing Service not later than an announced date, usually about two weeks before the testing date.

Applicants for the Graduate Record Examination can complete all application papers at the office of the Dean of the Faculty at Colby.

Applicants for the law and medical tests can secure information and application blanks at this office, but must mail their applications directly to the Educational Testing Service at Princeton, New Jersey. Booklets describing all tests are available at Colby.

At present the graduate schools of Business Administration, of Education, and of Secretarial Science do not uniformly require tests, but in some instances where such a school is located in a university whose other graduate schools require the GRE, that test is also required in the business, educational, and secretarial schools.

Colby students in doubt about requirements, tests, or methods of seeking admission to advanced schools are urged to have conferences with the Dean of the Faculty.



## Ski-atorium In Full Use; Weather Is Unfavorable

The 1400-foot rope tow at the Colby Mountain Ski Area has been in operation irregularly for three weeks.

Vacations, Carnival Weekend, and vagaries of the weather have made consistent use impossible, but it is hoped that a more definite schedule will be followed during the remainder of the winter.

Several new splices have been made in the rope in order to get rid of the slack due to stretching.

At least one member of the Ski Patrol, composed of some of the ski team and a few apprentices who donate their time and effort, is in charge of the tow at the base of the slope at all times.

The 2800-foot rope is powered by a reconverted Ford truck engine located at the top of the slope.

Entrance to the slope is from the bottom where a fee of \$.50 for Outing Club members and \$1.00 for non-members is to be paid to the Patrol member in charge. All returns go to the Outing Club for payment and maintenance of the slope.

Ski Slope Council

Robert Mitchell '49, head of the Patrol, John Harriman '50, David Dobson '49, George Wiswell '50, George Bowers '50, and a few others compose the Ski Slope Council which is the governing and administrative body of the project.

The two-season undertaking, including off-season building and clearing, and winter maintenance, embodies many plans for the future.

The building of a proposed 130-foot jump will probably be started this spring in addition to the improvement of the road to the ski area.

## Elms Restaurant

Our Motto Is

"QUALITY

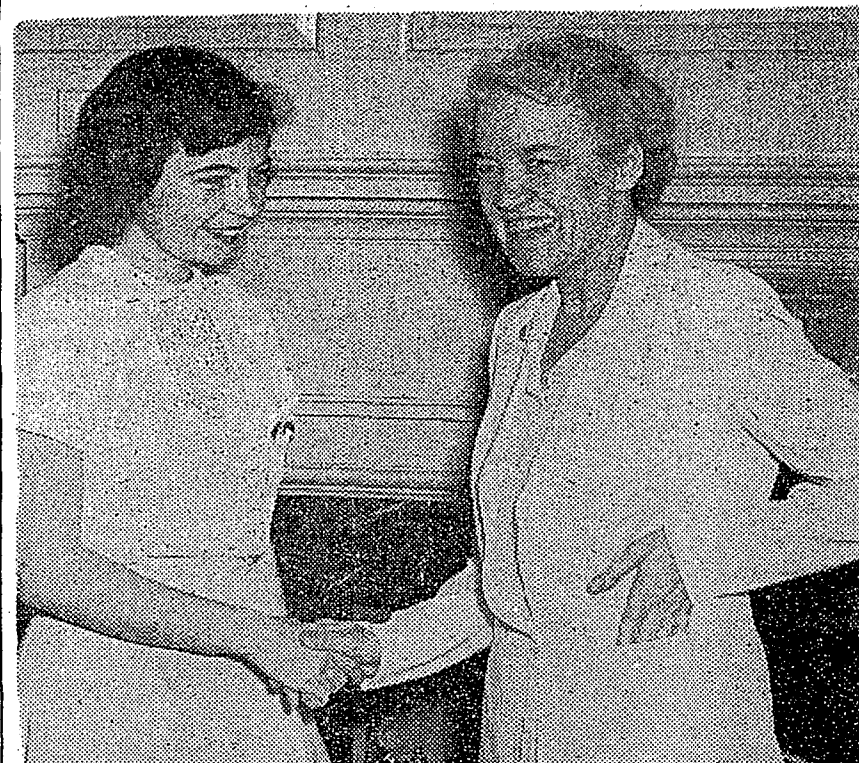
AND

SERVICE"

41 Temple St.

Waterville

## Sigma Kappite Smith



SENATOR MARGARET CHASE SMITH (right) with Patricia Lydon '49, Sigma Kappa president, during initiating ceremonies here last week.

## Sigma Kappa Initiates Senator Smith; Ceremonies Attract National Notice

Maine's junior senator, Margaret Chase Smith, was initiated into Sigma Kappa Sorority on Saturday, Febru-

ary 19.

Audrey King '50, Mary Lou Kil-

kenney '50, and Janet West '50 were also initiated into the sorority with Senator Smith.

Banquet At Elmwood

A reception open to all the college was held after the initiation in Dunn Lounge from 3:30 p.m. to 5:00 p.m.

The program ended with a banquet held at the Elmwood Hotel at 6:00 p.m. in honor of Senator Smith. President Patricia Lydon '49 gave the welcoming address and Janet Pride '49, acted as toastmistress.

Songs By Trio

Other speakers were Mrs. Alice Wick and Mrs. Margaret Taggart, national officers, Mrs. Grace Thompson, and Jean Desper '49. As Senator Smith was unable to speak due to laryngitis, Janet Pride read her address.

Sigma Kappa's trio, composed of Elizabeth Beamish '49, Hope Harvey '49, and Beverly Hallberg '49, sang sorority songs as part of the evening's entertainment.

Many guests were present from Sigma Kappa Alumnae Chapters all over New England.

Campus Chest—Top 4500

**Datsis Right**  
FOR SNACKS  
AND LIGHT LUNCHES  
**Datsis Hot Dog Place**  
7 Front Street

## Russian Democracy Explained By Simmons

By Gerald Baker '50

Ernest J. Simmons, professor of Slavic languages at Columbia University, was the first lecturer in the current Averill series.

The lecture was held Friday evening February 18, in the Women's Union, and was entitled "The Soviet Concept of Democracy".

A strong point that Professor Simmons made at the beginning of his talk was that the leaders in Russia honestly believe that the purest democracy existing in the world is present in their state.

They feel that American democracy is not democracy at all. And the leaders of the Soviet want it known that democracy exists in Russia, so that the government will appeal strongly to the masses.

In attempting to arrive at the basic difference between American and Russian democracy, Professor Simmons stated that the Russian concept tends to exalt the community, and to subjugate the individual.

In essence, that concept is opposed to American democracy, which exalts the individual.

Professor Simmons further stated that there is a good deal of disparity between theory and practice in the Soviet Union. Labor decrees for example are in existence although opposed to the soviet concept.

Yet, he reminded us, intolerance is still present in the United States, although it does not have a place in our concept.

## 1947-48 Campus Chest Totals Over \$4000

The 1947-1948 Colby Campus Chest sent checks to the following organizations:

United Service to China	\$259.53—6.5%
(\$52.80 sent to Delta Delta Delta Headquarters)	
World Student Service Fund	\$1089.80—33%
UN Appeal for Children	\$191.11—4.5%
Near East Foundation	\$260.87—4.5%
American Cancer Society	\$403.25—9%
United Jewish Appeal	\$273.54—6.5%
Pine Tree Society for Crippled Children	\$489.36—11%
Maine Seacoast Missionary Society	\$133.71—3%
Tuberculosis Fund (Maine Public Health Assoc.)	\$363.76—9%
Care	\$202.50—6.5%
Shipping clothing to Europe	\$25.00

The total amount of money received from last year's campaign was \$4119.19. Although the quota of \$4500 was not reached, this year the sponsors of the drive are aiming to TOP FORTY-FIVE HUNDRED!

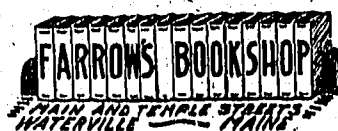
## Laundrette

10 Main Street

HOURS

Daily 9 - 5:30

Wed. 9 - 12:30



## COLBYITES

We guarantee you an Alibi  
When you're in our Alibi Room

**HOTEL JAMES**

## Donations Will Aid European Sufferers

United Jewish Appeal is an organization for the purpose of helping Europe's Jews in the struggle toward recovery.

JDC shipped into the Displaced Persons Camps of Germany and Austria in 1947, 23,000,000 pounds of high energy foods. Large quantities were also sent to Italy and Cyprus.

Many of the people aided by this supply of food had been subsisting on a diet of less than 1,500 calories per day and had been suffering for semi-starvation for years.

Child care constitutes a large part of the reconstruction work done in France. This care involves 11,000 children who have come to France as refugees from various parts of Europe.

Medical rehabilitation, including public health services, preventive examinations, and training of technicians and specialists are also problems which must be faced by this organization in its recovery program.

## Dr. Friedrich Explains Germany's Problems

Dr. Carl J. Friedrich opened the Gabrielson Lecture Series for the spring term, with a discussion of the place of Germany in world peace.

Dr. Friedrich served as official political adviser to General Lucius Clay from 1946 to 1948 in Germany.

Presenting the problems in Germany as being three-fold, that of developing world trade, rebuilding ruined cities, and achieving consolidation of the country again, Dr. Friedrich spoke very highly of the United States' stand in helping achieve these aims.

Airlift Symbol Of Fight

The British formed with us at that time, a bi-zonal authority, and at present the French are entering into a tri-zone, thus aiding greatly in making the German people more Nationalistic.

The Berlin airlift has become a symbol of the fight against Russia. The situation there was almost completely the result of aggressive action of the Soviets which we could not prevent, only withstand.

## Weathervane

(Continued From Page 3)

One of the criteria of a good painting or piece of sculpture is that it stimulate the observer both intellectually and emotionally. The message of the artist will be conveyed once the observer feels what the artist was attempting to do.

Conditioned By Tradition

If we approach modern art with an open mind freed from all preconceptions of what art should be, our chances of understanding the "new vision" are increased.

However, this fresh approach is difficult to attain for we have been so conditioned by tradition and so impressed by the words of art historians we find it hard to separate art from the Renaissance.

If we can only surmount the mental block which prohibits us from thinking all great art must be in the style of Raphael or even Cezanne we will come closer to a realization of what distinctively belongs to our own age.

## NEW BOB-IN

From A Snack  
To A Dinner

## Mowry Credit Jewelers

Let us solve your Gift Problems  
Never an added Charge for Credit

45 Main Street  
Waterville, Maine  
Telephone 864

## NORTHEASTERN UNIVERSITY SCHOOL of LAW

Admits Men and Women

Day, Evening and Graduate Programs

**Registration—Sept. 12 to 14, 1949**

Early application is necessary

47 MT. VERNON STREET BOSTON 8, MASSACHUSETTS  
Telephone KEmore 6-5800

## STERNS

THE STORE OF FAMOUS BRANDS

Glamorous new curves

...with **Life-Bra**

You're more exciting, more enticing with Life Bra. Because the clever quilted cushions Lift, Mold, Correct, Hold, all at once—to give you that fully rounded new look. Ask our fitters for proof.

LIFE BRAS, \$1.25 TO \$3.50





## Campus Chest Drive Generously Backed By Many Supporters

The Colby Campus Chest Drive, which will start February 27, owes much of its success and planning to the following students, organizations, and Waterville business concerns:

Special deductions were given the organization by Berry's on the printing of stationery, and by the City Job Print on printing tickets.

### Millett Was Spark

Ellsworth W. Millett who was the spark which started this year's campaign offered many new ideas such as a faculty show and a benefit Colby Concert.

Professor Richard Kellenberger and Miss Lucile Pinette have helped in securing faculty pledges.

### Typing, Publicity

Constance Leonard '50, has done all the typing and mimeographing needed for the campaign.

Robert Ingram was in charge of the general publicity.

The students on the coordinating committee are Richard Johnson '51, Claire Rosenston '51, Richard Barta '51, Helen Leavitt '51, and Joseph Niedzinski '51, who is also in charge of the Roberts Union Dance Saturday, February 26, and pledge captain for his dormitory.

The posters for advertising the campaign were done by Mary Ellen Bonsell '49, Hildagarde Pratt '50, and Patricia Love '51.

### Extra Concert

Ruth Stetson '50 was in charge of appointing all the dormitory pledge captains.

Special mention should be given Dr. Ermanno Comparetti for the extra Community concert and to Al Riefe and his orchestra for their free performance at the Sadie Hawkins dance.

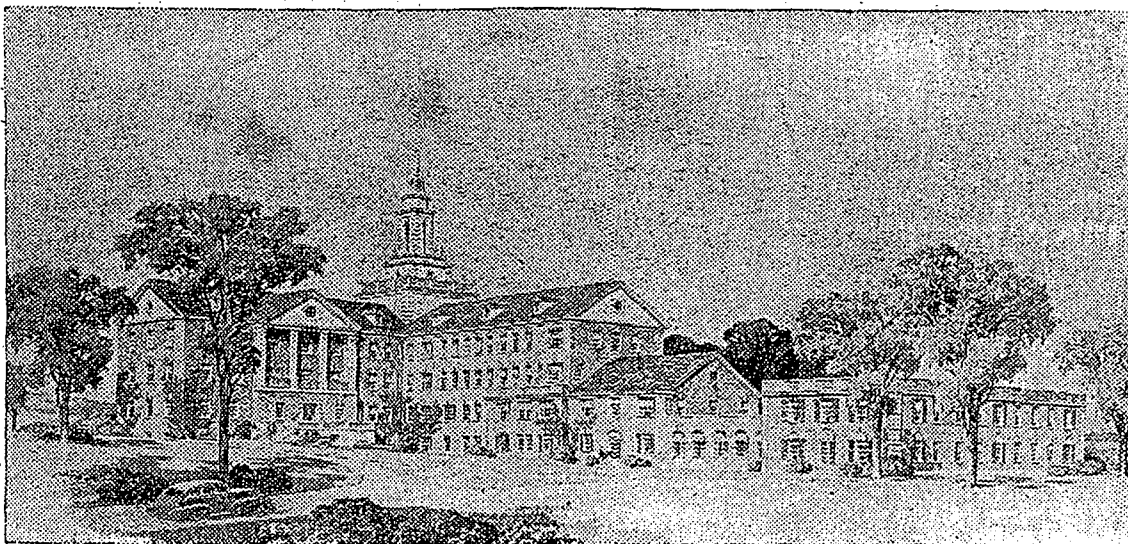
### Maine-Colby Gam

Robert Rosenthal '50 is the treasurer for the entire drive and has charge of all the money which is received.

Mr. Mike Loeb, Thomas Keefe '49, Peter Valli '51, and Robert Cook '49 have given all money made on the concessions at the Maine-Colby game Saturday, February 26.

Mary Gardiner '49 is responsible

## Artist's Layout Of New Thayer Hospital



THE PROPOSED THAYER HOSPITAL as it will look when construction which will start this Spring, is completed. The College Infirmary will be in this building.

## Faculty Members To Bus For Ladies

Faculty bus-boys will serve at dinner in the women's dormitories Monday, February 28, as part of the activities during the Campus Chest Drive.

Each dining room will have three bus-boys who will be elected by the girls in the respective dormitories. Ten cents will be charged for each vote and the professors will serve in the dining room from which they received the most votes.

Marion Brush is in charge of the election.

for the efficient and successful planning and execution of the Colby Campus Chest Drive.

Campus Chest—Top 4500

## Thayer Hospital Site No Longer On Hill

Purchase of a new site for Thayer Hospital was announced by hospital trustees Monday night.

The new Thayer Hospital is to be located at North Street (the "back road" to Mayflower Hill) and Quarry Road in Waterville.

Original site for the institution was to be on Mayflower Hill, but "this seemed unwise for several reasons," W. E. Parsons, representative for the trustees, stated.

"It is a public institution and should be separate from Colby and nearer the town," Parsons explained.

Campus Chest—Top 4500

## For Service Dependability & Quality Dexter Drug Stores

Incorporated  
118 Main St., Waterville Tel. 2095  
2 Clinton Ave., Winslow Tel. 363  
Nite Calls 2294

## Carnival Planned For Campaign Fun

Greek Letter Society is sponsoring a Carnival in the Women's Union Saturday, March 5, for the purpose of raising money for the Campus Chest.

All fraternities, sororities, and campus organizations will have booths.

Janet Pride '49, and John Mahoney '49, are in charge of the arrangements.

### COMPLIMENTS OF

## NOEL'S CAFE

## Gabe Lecture Series Schedule Announced

The schedule for the Gabrielson-Government 4 Lectures for this semester has been announced by Professor Paul A. Fullam, head of the History Department.

The lectures are scheduled as follows:

March 8; John Gaus, professor of political science at the University of Wisconsin.

March 10; Julian Steele speaking on "The Negro and Civil Rights".

April 7; Carl J. Friedrich, professor of government at Harvard, speaking on "The East-West Conflict".

April 21; Pitirim A. Sorokin, professor of sociology at Harvard, speaking on "The Real Causes of American-Russian Tension".

May 5; Sidney Fay, professor of history at Yale.

May 12; Norman D. Palmer speaking on "Communism in China and Its Implications for the United States".

May 19; Paul A. Fullam.

The Gabrielson series are lectures by outstanding scholars in their particular fields and are open to all students.

Campus Chest—Top 4500

Colby students are always welcome at

## Walter Day's

Post Office Square

Films Developed—24 Hour Service  
Greeting Cards For All Occasions  
Stationery, Magazines, etc.

Telephone 145

## Waterville Steam Laundry

145 Main Street Waterville, Me.

## HARVARD SUMMER SCHOOL OF ARTS, SCIENCES, AND EDUCATION 1949

Eight-week Courses: July 5 — August 27

Six-Week Courses: July 5 — August 13

Coeducational — Graduate and Undergraduate Courses

Veterans may enroll under G. I. Bill

Dormitory Accommodations and Cafeteria Service

Address: Department C, 9 Wadsworth House

Harvard University  
Cambridge 38, Massachusetts

How new can an old song sound?



Listen to Johnny Long's new  
Signature Record, "SWEET SUE"  
...and you'll know!

Johnny Long has brightened the lyrics and set the bounce to give a brand new touch to an old-time favorite. Yes! Johnny picks his music for your dancing pleasure. And...for his smoking pleasure, Johnny Long chooses Camels! As Johnny says it, "Camels are the mildest and best tasting cigarette I've ever smoked."

How MILD can a cigarette be?

Make the CAMEL 30-DAY TEST  
...and you'll know!

Yes, make the 30-day Camel Mildness Test. See for yourself how mild Camels are. In a recent test of hundreds of people who smoked only Camels for 30 days, noted throat specialists, after making weekly examinations, reported

NOT ONE SINGLE CASE  
OF THROAT IRRITATION  
due to smoking—

HERE'S ORK-PILOT,  
JOHNNY LONG,  
TALKING IT OVER  
WITH BROADWAY  
SINGING STAR,  
SANDRA DEEL.

I'VE SMOKED CAMELS FOR A  
NUMBER OF YEARS AND,  
I KNOW HOW MILD CAMELS  
ARE. I MADE THE MILDNESS  
TEST A LONG TIME AGO!

WELL, JOHNNY, SINCE I TRIED  
THE 30-DAY MILDNESS TEST,  
CAMELS ARE MY CIGARETTE,  
TOO. CAMELS ARE SO MILD  
—AND SO FULL FLAVORED!

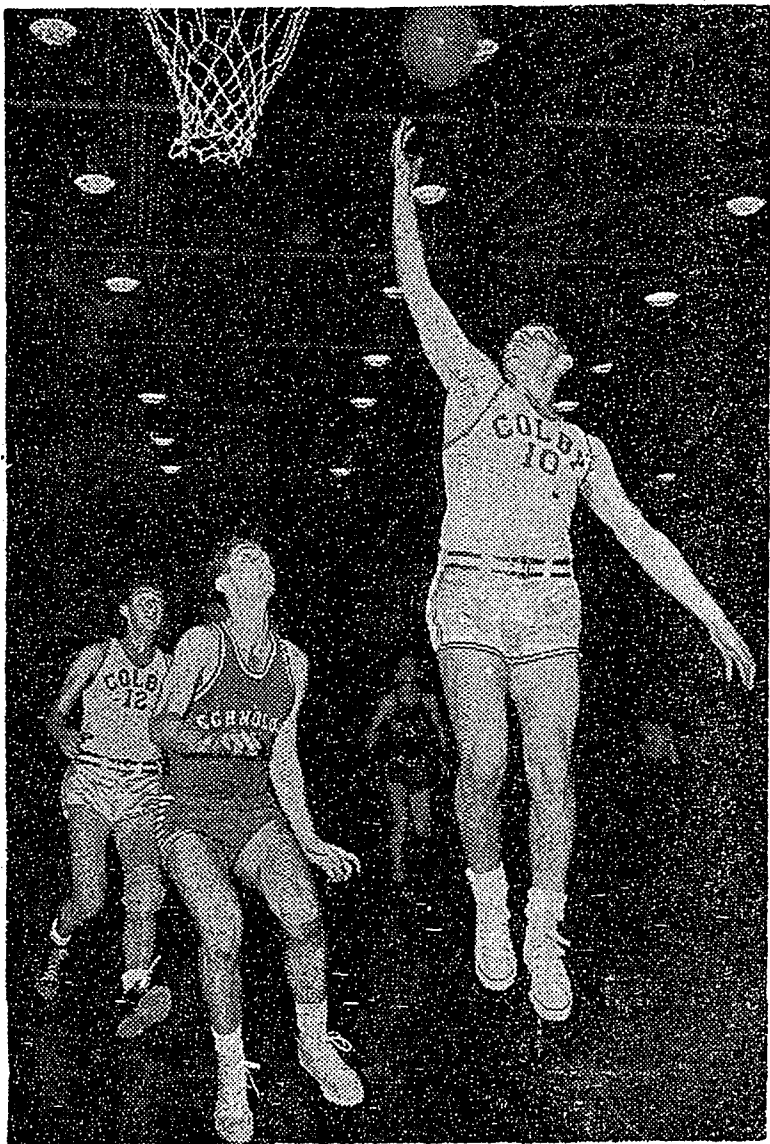


Camels

### Money-Back Guarantee!

Smoke Camels and test them in your own "T-Zone," T for taste, T for throat. If, at any time, you are not convinced that Camels are the mildest cigarette you ever smoked, return the package with the unused Camels and we will refund its full purchase price, plus postage. (Signed) R. J. Reynolds Tobacco Co., Winston-Salem, N. C.

## Mules Take Technicians 57-42 As Teddy Shiro Paces Team



**TEDDY SHIRO** (No. 10) flips another swisher as **Tubby Washburn** (No. 12) comes up to man the backboard in the MIT game. The mules won, 57-42.

Colby made it eight wins in nine attempts Sat. February 19 as they coasted by Massachusetts Institute of Technology 57-42. It was the first time this season that the Mules failed to collect 60 points or better in the new fieldhouse, and this can be attributed to the uninspired play of the first half.

In fact, the New State Champions never really got rolling until the Engineers knotted the score midway in the second period. Then the Mule attack became crisper and smoother, and paced by Teddy Shiro, Colby pulled away to a lead which was never again threatened by the visitors.

The first half offered little to excite the crowd. The play was very dull, and the Mules looked far off tourney form, leaving the floor at half-time leading 22-17. When M.I.T. took the lead after a few minutes of play in the second half, Washburn, Michelson, Finegan and Co. finally came to life, with Finegan starting them off with a field goal and foul shot.

Teddy Shiro offered one of his

best games of the season as he continually broke away for driving lay up shots on a fast break.

In addition, his ball-hawking reminded many of the former Colby star George Clark. Shiro racked up 20 points for his nights exhibition while Washburn and Finegan again hit for double figures with 14 and 12 respectively.

Colby	Goals	Fouls	Points
Michelson, rf ..	4	1	9
Billings .....	0	1	1
Pierce .....	0	0	0
Washburn, lf ..	6	2	14
Finegan, c .....	5	2	12
Welton .....	0	0	0
Mitchell, rg ..	0	1	1
Lazour .....	0	0	0
Shiro, lg .....	7	6	20
<b>Totals .....</b>	<b>22</b>	<b>13</b>	<b>57</b>
M.I.T.	Goals	Fouls	Points
Honkalehto, rf ..	2	0	4
Madden, lf .....	7	5	19
Corrie .....	1	1	3
Inman .....	0	0	0
Morton, c .....	3	1	7
Hitchins .....	0	0	0
MacMillan, rg ..	0	2	2
Rosscheck, lg ..	3	1	7
Hong .....	0	0	0
<b>Totals .....</b>	<b>16</b>	<b>10</b>	<b>42</b>

## Femmesports

By Mary Hathaway '49

The results of the volleyball tournament which took place before exams, are as follows:

On the freshman class team are How, Mayne, Ward, Vaughan, Shaw, Brown, Watt, Rossiter, Frolio, Edwards, Cammann, Rees, Millett, Stowell, Burns, and Love comprise the sophomore team, while Arditt, Shibles, Crandall, Root, Haynes, Jensen, Tracy, and Berry are the main props on the junior team. The senior stalwarts are LaCasee, Plaisted, Klafstad, Whitcomb, Perkins, Bond, Fountain and Houston.

### Will Sponsor Bowling

Those who succeeded in maintaining a position on the honorary varsity team are Ward, Haynes, Arditt, LaCasee, Plaisted, Klafstad, Whitcomb and Bond.

WAA will sponsor bowling at the Campus Chest carnival Saturday, March 5. It's guaranteed that even the worst bowler in the world will do well on the WAA alleys. Don't forget to start your evening by bowling a few strings.

Another Badminton Party will be held in the Women's Union. Previous parties have been mighty successful, so you can be assured of a good time if you attend.

## Freshmen Cagers Bow To Ricker Five

Colby's freshman hoopsters suffered their second set-back of the season Saturday, February 19, against an undefeated Ricker Junior College five.

Highly-touted Ricker lived up to expectations in nipping the Mulettes 54 to 51.

The freshman, led by acting-captain Bob Jones, jumped into an early lead, but as the end of the half drew near the Ricker-men began clicking. In the second half, failure of the frosh to make easy lay-ups and inability to sink foul shots spelled their defeat.

Will Gouzie, playing his first game of the season at center, was Colby's high man with 13 points.

In October of 1900 Colby lost a football game to Holy Cross by one last minute touchdown. The score was five to six.

### "Necklers' Knobs"

Cross & Grab Chains — Extra Links  
Everything for the car at lower prices  
**WESTERN AUTO**  
**ASSOCIATE STORE**  
169 Main St. Waterville, Maine

### Meet At PARKS' DINER

"Quality - Service - Cleanliness"  
Open 24 Hours Except Sunday

### Carter Your Florist

CORSAGES & CUT FLOWERS

Tel. 1061

House 1229-M

Campus Chest—Top 4500

## Devens Downed 64-48 By Slow Mule Attack

By Alan Mirken '51

"Edward Roundy Night" was celebrated last night February 22, in the new Mayflower Hill Fieldhouse. Ed Roundy was presented with a trophy honoring his 25 years of devoted service to Colby College.

In addition, Coach Lee Williams' hoopsters presented Roundy with a 64-48 victory over Fort Devens. The triumph was the ninth for the Mules in their last ten outings.

Colby was in danger only once during the one-sided contest. That

was midway through the first half when Devens momentarily surged ahead to take a 17-14 lead.

From that point on the home club gained command of the game. The Mules led 33-24 at halftime.

### Michelson Scores First

Michelson hooped the first basket of the evening, a long set shot, in the first minute of play. Devens worked the ball down slowly, reminiscent of the first Colby-Bowdoin game.

The visitors stationed themselves around the forecourt and passed back and forth for a full three minutes. The tight Colby defense prevented a successful break and the "slow-down" came to an end as Finegan tapped the ball out of bounds.

During the remainder of the game both teams used the fast break whenever possible. The total of 39 fouls called, slowed down the play, however.

Devens "committed" 26 fouls and Colby was guilty of 13.

### Entire Colby Squad Plays

Every member of Colby's 12 man squad saw action in the contest. High scorer for the Mules was Warren Finegan who poured 14 points through the hoop.

Russ Washburn took second honors with a total of 11 markers. In addition to the aforementioned two, Pierce, Michelson, Shiro, Welton, and Captain Bill Mitchell played good ball for the home club.

The refereeing, which is consistently poor hereabouts, hit a new low last night. It is admitted that the officials' job is extremely difficult so long as two men must watch the actions of ten players simultaneously.

Nevertheless, there can be no excuse for the poor officiating of last night's game by Bruno and Shanahan. Time and again violations were overlooked or fouls called unnecessarily.

Such officiating is unfair to the players and disheartening to the fans.

### Devens Receives Rough Treatment

Actually the officiating had no direct bearing on the outcome of the contest. The Devens players were peeved, however, and justly so, by the rough treatment they received at the hands of the referees.

It is unfortunate that a well-earned Colby triumph should be thus tainted. Here's hoping the performance will not be repeated.

Colby will meet the rejuvenated Maine Bears in its final State Series encounter on Saturday night. The Maine squad has been bolstered by the return of three veteran performers.

Bates' 60-29 defeat up at Orono last week should serve as evidence of Maine's "new look". Any club which can hold Simpson below ten points must be held in high esteem.

A close game is expected, with the Mules having the advantage of playing on their home grounds.

Campus Chest—Top 4500

## GIRLS -

For the first time on the hill

**ALL of your beauty needs**

Cologne — Powder — Lipstick — Hand Lotion  
Home Permanents — Skin Cream — Shampoo  
Only Famous Brands

- Evening in Paris ● Rayve
- Harriet Hubbard ● Lustre Cream
- Ayer ● Prell
- Max Factor

Palmolive, Swan, Cashmere Bouquet Soaps

For Men:

The new Gillette 10 blade dispenser only 49c

**Colby College Bookstore**

Exclusive Automatic  
"TOUCH TUNING"

WITH THE  
**New PHILCO TABLE RADIO**

New tuning eggs... just touch the drum to change stations... no buttons to push. Tuning drum also adjusts volume. It's the "new look" in table radio design. Choice of ivory or light green plastic cabinet. Model 901.

**EASY TERMS**

**DRAPEAU**

**STATE**  
**WATERVILLE**

**STARTS SUNDAY**

Cary Grant Franchot Tone  
Diana Lynn in  
"EVERY GIRL  
SHOULD BE MARRIED"

Starts Wednesday  
"ACT OF VIOLENCE"

Van Heflin Robert Ryan  
Janet Leigh

**HAINES**  
**THEATRE**

**NOW PLAYING**

Douglas Fairbanks, Jr. in  
"THE FIGHTING O'FLYNN"

Starts SUNDAY Feb. 27

Errol Flynn in  
"ADVENTURES OF  
DON JUAN"

In Technicolor



# MULE KICKS

By Bob Slavitt '49

We have been accused of many things this week past concerning the suggestions we made in the last issue of this hallowed paper. We plead not guilty to most of them. The lowering of Colby's high standards, and the assassination of this schools high rating among its fellow institutions of learning is the farthest thought from our mind. Nea, these things are far to sacred to attack, being synonymous with higher learning, and sacred cows, and such. Far be it from our powers of thought to be able to comprehend the value of the infinite advantages of the system at Colby as it now stands to challenge it. This would be tantamount to sacrilege, and mutilation of a shrine. All we did, was to feebly attempt to cry from the wilderness, that all was not infallible. ALL IS NOT!

One quaint member of the faculty put himself on record as feeling that all who did not attain at least a "B" average were somewhat worse than dirt. They belong on the business end of a pick or shovel rather than daring to begrime the marble corridors of this temple of education. I, being out of the genius class (way out), picked up my begriming carcass and silently stole away in search of a nice new shovel. Luckily for the shovel trade, I didn't find one. I might add, that I heartily disagree with this member (quaint or no) of the faculty. My humble opinion is that he is away out in left field without a glove. Search of knowledge is a noble thing, but I feel (and I sight the wage scale of our national educators) it is a poor way to support ones self and ones family. Most of us are not inclined nor equipped to enter the ivory tower of learning, are we then to be denied the right to what little we may collect in a college? This attitude of superiority smacks, and not too sweetly, of the Master Group philosophy. Our little mental leader who expounded this philosophy sited "Who's Who" as a prime example of his philosophy. Most of the members of this true blue list, it seems, were brilliant men in school. Who's Who, Shmoos Who, let's give the average guy a break. If he plays sports and takes that time away from his other time, let's give a bigger break. It won't lower anything anywhere. Even mighty Yale, the heart of the educationally elite, and its co-brothers Harvard and Princeton, recognizes the value of an athlete to the rest of the college. Let's wake up and wise up Colby, we're being left far in the van of collegiate progress. We are building a new college, let's not build it on rotting foundations.

Congrats to Colby's basketball team on their invite to the Small College Tournament play-off for the New England area. They have come fast over a hard and wearying road. They have come back as only champions can—off the floor. After dropping eight straight and wallowing in the depths of the basketball cellar, they have bounced up to take nine of their last ten and emerge as one of the best of their class. They say, that "They never come back". Colby's hoopsters did the toughest, they came back. We have in the past said some unkind things about the hoopsters of Colby, and unlike Cardinal Midzenty we will not recant, because they were true when we said them, but now we will give honor where honor is due. We hop on nobody's bandwagon, if we thought that the basketball team was poor at this time, tournament or not, we would say so. They still have faults, but who doesn't? They are a vastly improved team over last fall, and considering all at its worth, they are O. K. in our books now.

It is to the full satisfaction of this paper that Coach Eddie Roundy has been honored in a way so fitting him. Nothing could be a finer tribute to a man who has done so much for Colby than to put him on the pedestal of perpetual recognition. A finer man nor a better teacher is hard to find. For a teacher he is. Not of history or rhetoric, but of living. Coach Roundy has taught the most important course in this or any school for twenty-five years, and he has taught it superbly. He has taught his students the art of living cleanly and graciously.

The refereeing at Colby games at home and away during the past few weeks has been atrocious to say the least. Why has this State seemed to have collected every incompetent official in the world and turned them loose on the teams of the state. If nothing better than the general run of officiating that we have had recently can be found in this state, then import some from elsewhere. They make the game they work a farce. Players laugh openly, and rightly at them on the floor, and play gets completely out of their hands. The game appears to be too fast for them to-day, and the spectator wonders how they ever survived the abolition of the center jump. Or, more pointedly, if they survived it? In a word, they are lousy. Young blood should be introduced into the ranks. They certainly couldn't do any worse.

Campus Chest—Top 4500

Campus Chest—Top 4500

**MANUFACTURER'S SALE!**  
Imported Briar Pipe — \$3.50 Value



**PLUS**  
1 lb. Dill's Best Tobacco  
**PLUS FREE**  
Pipe Reamer

Only \$2.49

or, Pipe plus 1 lb. Old Briar Master Mixture

only \$2.69

**ALSO — 2 regular 18c packs Dill's Best only 18c (limited one to a customer)**

**ONE DAY ONLY — WED., MARCH 2**

**at THE BOOKSTORE**

## Baseball Lettermen Honor Roundy With Dedication Of Annual Trophy

### Eddie Roundy Coach At Colby 25 Years

By Robert Slavitt '49

Last night, between the halves of the Colby-Devens basketball game, the Varsity lettermen of the 1947 and 1948 Colby baseball teams presented the Roundy Trophy to Colby College.

The trophy, given in honor of Coach Roundy's 25 years of service to Colby, will be awarded annually to the Most Valuable Player on the Colby Baseball team.

The honored player will have his name engraved on the large trophy, which will remain in the Colby Trophy Room.

A companion trophy, donated by Carl "Gumbo" Wright, star pitcher of the 1947 State Champs, will be given to the player for his personal keeping.

The trophy is a fitting honor to a man who has given twenty-five years of immeasurable service to Colby. "Eddy" Roundy has inspired Colby teams to the heights for 25 years, and the Trophy presented in his name will enable him to inspire future Colby men for all time.

Coach Roundy, at various times has coached Colby teams in all the major sports, but it is in baseball that he has had his longest and most lasting fame.

Roundy coached teams have won glory on the diamond of Colby for a quarter of a century, and the man who led them has been an inspiration for sportsmanship and citizenship every moment of that time.

The criteria upon which the trophy is to be awarded is to be decided in the future. It was felt, that Coach Roundy himself should make the rules by which the award is to be given. These regulations of attainment will be announced as soon as they have been established.

Coach Roundy, who has helped developed such professional stars as "Colby Jack" Coombs and "Bill" McCann, is considered one of the best mentors of collegiate baseball in this section of the country.

Until ill-health curtailed his activities, he coached basketball and helped coach football here at Colby.

A graduate of St. Lawrence College, Coach Roundy came to Colby in 1923, and has been a fixture on the campus since then, minus a leave of absence during the past war.

The first awarding of the trophy will be this year. The group that will vote on the winner of the first trophy is to be announced in the near future.

### Badminton Party Scheduled By WAA

A Badminton Party is being sponsored by the Women's Athletic Association, Thursday evening, February 24, in the Women's Union at 7:00 P. M.

It is at the request of previous participants that additional student-faculty badminton nights have been planned.

All students and faculty are invited to attend regardless of ability to play.

### Frat Ski Meet Won By DU; ATO Next

On Sunday afternoon last, at 2:00 P.M. the Inter-Fraternity Ski-Meet, originally scheduled for Winter Carnival Week-end, was run on the Mountain Farm Ski Slope. The D.U.'s took first place closely followed by Alpha Tau Omega, and Lambda Chi Alpha.

The meet consisted of two events; a downhill race and a slalom. Al Langhorn of D.K.E. made a clean sweep of the afternoon by taking first in both events, as he racked off a 37.9 sec. run in the downhill and a 37.4 in the slalom.

Dave Clark of Delta Upsilon placed second to Langhorn in both events with a 38.6 sec. in the downhill and a 40.0 in the slalom.

Jeff Lyford, recent transfer from Cornell took a third in the downhill while racing for the Independents, beating Dick Pullen of Zeta Psi by three tenths of a second.

Ben Pearson and Bob Mitchell of A.T.O. finished close behind in fifth and sixth position. Pearson and Mitchell finished in that order again in the slalom as they took third and fourth in that event.

The course was a special course designed by the Ski Patrol to insure speed and at the same time introduce an element of safety for the novices who might compete.

The snow was fast due to freezing conditions, and the races were strongly contested all the way down the line, with as little as four tenths of a second separating three positions.

Results:

<b>Slalom</b>	
Langhorn—D.K.E. ....	37.4 sec.
Clark—D.U. ....	40.0 sec.
Pearson—A.T.O. ....	45.7 sec.
<b>Downhill</b>	
Langhorn—D.K.E. ....	37.9 sec.
Clark—D.U. ....	38.6 sec.
Lyford—Ind. ....	39.0 sec.

### Frosh Basketeers Conquer MCI 59-53

fore the final whistle.

With the score tied at 53-all, they went into an overtime period when the freshmen really turned on the heat, scoring six points to none for their opponents.

The Baby Mule eagles took MCI over the hurdles for the second time this season Friday, February 18, outscoring them 59-53.

It appeared during the first half as if the frosh would have another soft touch. MCI was unable to penetrate Colby's tight defense, and at half time they found themselves trailing by 10 points, 29 to 19.

In the second half an inspired MCI gradually lessened the deficit and managed to catch the frosh just before



"Ed" Roundy

### Frosh Icemen Lose Close 2-1 Decision To Hebron

Colby's Freshman Hockey team dropped a close 2-1 decision in overtime to Hebron Academy at the South End Arena last Monday afternoon.

The Frosh pucksters, haunted by the overtime jinx have yet to win a game that went beyond the scheduled time. The game was delayed twenty-five minutes as the coaches and officials debated playing on the rather poor ice.

Hebron opened the scoring at 8:45 of the first period when Cates took a pass from Melencoff and beat Ray Billington to give the Green a 1-0 lead.

Colby failed to score when Hebron was left a man short after Aldred was caught tripping for the only penalty of the period.

Wes Hayes tied it up for the Baby Mules as he hit the nets at 13:20 of the second period with a neat solo effort. Both clubs were caught short handed during the period, but it didn't affect the scoring.

Neither team was able to score in the third period, although Hebron made it hot for Billington when "Bernie" LaLiberti was banished for two minutes on a tripping violation.

In the overtime, both squads had opportunities to score before Aldred took Kiny's pass and converted it at 8:00 to put Hebron into a 2-1 lead that was enough to win the game. There were no penalties in the extra session.

Line-ups:

<b>Colby</b>	
L.W.—Wes Hayes	
C.—Ray Keyes	
R.W.—Bill Gelotte	
L.D.—A. Armstrong	
R.D.—B. LaLiberti	
G.—R. Billington	
Subs—Kennedy, B. Keyes, R. Lanning, Powell, Leaf, Gunn, Streich.	
<b>Hebron</b>	
L.W.—G. Aldred	
C.—G. Kingsley	
R.W.—T. King	
L.D.—D. Lane	
R.D.—B. Fisher	
G.—D. Kingsley	
Subs—Dextor, Marsh, Graham, Melencoff.	

### Yor Flower Shop

Flowers for all occasions

Member of FTD

Flowers telegraphed to all

Parts of the World

10 Paris St.

Tel. 2585-W

### ROY'S

197A Main Street

Candy—Pop Corn—Ice Cream  
Films Developed—24 Hour Service  
Cameras To Rent



Putting travel-worn cars in winter trim is our job. Let us ease your car cares today.



P. O. Square  
**ESSO**  
Service Center

## Missionary Society Appreciates Support

The Colby Campus Chest contributes to the Maine Sea Coast Missionary Society which was organized in 1905 by Reverend Alexander P. MacDonald, for the purpose of serving isolated communities and islands on the Maine coast.

This mission carries on its work by boat. The organization is responsible for schools, teachers, public health service, Christmas gifts for the people served, and a sufficient religious program. It supplies these people with many of the necessities of life which they can not obtain.

This missionary service is of particular interest to Colby College because of the affiliation of Sigma Kappa with the Society and because President J. Seelye Bixler and Mr. Joseph C. Smith are on the Board of Directors.

The Campus Chest gave the Mission \$133.71 last year. In a letter addressed to the Colby Campus Chest the Maine Sea Coast Mission stated, "We are writing to express our warm appreciation to the Students, faculty, and trustees of Colby Col-

## Chairmen Will Accept Donations To Red Cross

The Colby Campus Chest is not able to donate directly to the Red Cross because of the binding provisions of the latter's charter.

Pledge Chairmen in each dormitory, therefore, will have Red Cross membership cards for those who wish to join.

The Red Cross charter is under the support of the Government, and the policy of the organization is to secure personal memberships. It depends on volunteer service to carry out the work.

The Red Cross gives aid in six fields; aiding in disaster, serving the Armed Forces, serving veterans, promoting health and safety, serving youth, and helping around the world.

lege for their magnificent gift to the Mission—".

### Harold B. Berdeen

JOB, SOCIETY AND  
NOVELTY PRINTING  
We Give You Service  
Telephone 152

92 Pleasant Street Waterville, Me.

## NEWSHORTS

**TRI DELT SCHOLARSHIP**—Delta, Delta is offering its annual scholarship to any woman student on campus who wishes to apply.

Applications may be found in Dean Runnal's office and must be filled out and returned to her by March 9, 1949.

**KDR ELECTIONS**—The second semester Kappa Delta Rho elections resulted in John Hannah '49 being chosen consul. The other officers elected were Harold Wormuth '49, senior tribune; Herbert Perkins '50, junior tribune; Schuyler Mott '51, proctor; Thornton Merriam '51, propraetor; Robert Hartford '51, Quaestor; Philip Heywood '51, centurion; Richard Graham '51, social chairman; Henry Fales '51, athletic representative; Donald Leach '49 and Arthur Warren '49, advisory committeemen.

**DKE ELECTS**—New officers of Delta Kappa Epsilon are as follows: president, Joseph Putnam '49; vice-president, Richard Grant '50; secretary, Warren Finegan '51; treasurer, Robert Cook '49; corresponding sec-

retary, Charles Robinson '50; pledge master, George Irving Smith '49; historian, Richard Beal '51.

**SIGMA KAPPA INITIATED**—The following students Friday, February 18: Mary Sargent '52; Joan Martin '52; Margaret MacPherson '52; Georgia Fisher '52; Priscilla Storrs '52; Sylvia Rice '52; Janet West '50; Jane McLeod '52; Ruth Smart '51; Mary Lou Kilkenny '50; Mary Bracy '51; Nancy Webber '51; and Audrey King '50.

**SIGMA KAPPA ELECTS**—The new officers of Alpha chapter of Sigma Kappa are as follows: president, Janet Pride '49; 1st vice-president, Patricia Root '50; 2nd vice-president, Alice Jennings '50.

Historian, Alice Kable '49; magazine agent, Nancy Ewing '51; scholarship, Marjorie Shearman '51; corresponding secretary, Elizabeth Jacobs '50; recording secretary, Charlotte Crandall '50.

Registrar, Mary Lo White '51; Panhellenic representative, Barbara Jefferson '51; Triangle correspondent, Marguerite Baker '49; and social chairman, Mary Thomas '51.

Campus Chest—Top 4500

**GOOD SHOES FOR COLLEGE MEN AND WOMEN**  
**Gallert Shoe Store**  
51 Main Street Waterville, Maine

## Carnival Financial Success Says Ives

Winter Carnival Weekend was considered a financial success by the sponsoring Colby Outing Club.

John Ives '49, treasurer of the organization announced that all expenses were compensated for by the various receipts of the Carnival, and that the council has hopes for similar big weekends in the future.

Ives emphasized the fact, however, that no money was actually made on the event, and that the Outing Club received no profit.

Campus Chest—Top 4500

**Rollins-Dunham Co.**  
HARDWARE DEALERS

Sporting Goods, Paints and Oils  
Waterville Maine

# Always Buy CHESTERFIELD

"Chesterfield satisfies because it's MILDER. it's MY cigarette"

*Dennis Morgan*

STARRING IN  
"ONE SUNDAY AFTERNOON"  
A WARNER BROS. PRODUCTION  
COLOR BY TECHNICOLOR

MAKE YOURS THE MILDER CIGARETTE

MORE COLLEGE STUDENTS SMOKE CHESTERFIELDS THAN ANY OTHER CIGARETTE BY LATEST NATIONAL SURVEY



The TOP MEN of AMERICA'S SPORTS smoke CHESTERFIELD

JACK KRAMER says... "Because they're MILDER Chesterfields taste better all the way. It's MY cigarette."

