

April 2015

From the Editor (Editor's Note)

Gerry Boyle
Colby College

Follow this and additional works at: <https://digitalcommons.colby.edu/colbymagazine>

Recommended Citation

Boyle, Gerry (2015) "From the Editor (Editor's Note)," *Colby Magazine*: Vol. 103 : Iss. 3 , Article 21.
Available at: <https://digitalcommons.colby.edu/colbymagazine/vol103/iss3/21>

This Features is brought to you for free and open access by the College Archives: Colbiana Collection at Digital Commons @ Colby. It has been accepted for inclusion in Colby Magazine by an authorized editor of Digital Commons @ Colby. For more information, please contact mfkelly@colby.edu.

EDITOR'S NOTE

CONTRIBUTORS



Adrian Blevins ("Educating by Poetry," P. 22) is an associate professor of English and director of creative writing. Her most recent full-length book of poetry is *Live from the Homesick Jamboree*. A collection of essays she edited

with Karen McElmurray—*Walk Till the Dogs Get Mean: Meditations on the Forbidden from Contemporary Appalachia*—is forthcoming from Ohio University Press.



Steve Wurtzler ("Read/Listen/Watch," P. 90) is associate professor and director of cinema studies. His research focuses on sound media and technological change. The author of *Electric Sounds: Technological Change and the Rise of Corporate Mass Media* (Columbia, 2007), his work has also appeared in several anthologies.



Christina Dong '17 ("A Collaborative Note," P. 56) is an English major and managerial economics minor who writes regularly for *Colby Magazine*. She works for the *Colby Echo* as an investigative reporter and interned last

summer at her hometown newspaper, *Palo Alto Weekly*, covering local issues, neighborhood news, arts, and entertainment.



Perhaps it was because two of the professors featured here, Elizabeth McGrath and Dale Kocevski, are extragalactic astronomers, but in the process of preparing this issue of *Colby Magazine* I began to think of faculty office doors as portals. Pass through that portal and you enter a new and fascinating world. And there are hundreds of these portals on Mayflower Hill, each with the potential to broaden your experience and knowledge and enrich your life.

I say this having had my English-major mind boggled by McGrath's and Kocevski's cutting-edge research on the ways galaxies are born—and die. (P. 24). The images beamed down by the Hubble Space Telescope, including a batch downloaded as I sat in Kocevski's office in the Mudd Science Building, contain clues as to how the universe evolved hundreds of millions of years ago.

This issue is full of such Colby portals—and this is just a small sample.

Tanya Sheehan, associate professor of art, explains how medicine and art intersect—and reflect the ways that culture influences the result. Allecia Reid, assistant professor of psychology, studies the way group dynamics and pressures affect college-student drinking (P. 52). Adrian Blevins, associate professor of English, writes about the reason she teaches students to write poetry (P. 22). Think metaphor.

The report of published faculty books and articles (P. 36) goes on for four pages: the art of Terry Winters, Montaigne's essays, the fate of French colonial soldiers captured during World War II, the enormous environmental challenges facing the world's oceans.

After 15 years as editor of this magazine, I'm still struck by the remarkable work that goes on here.

It's snowing today. Mayflower Hill seems quiet. But that's only on the surface.

Gerry Boyle '78, P'06
Managing Editor

currents₇

ELIZABETH ATTERBURY

January 27–May 10, 2015

TERRY WINTERS

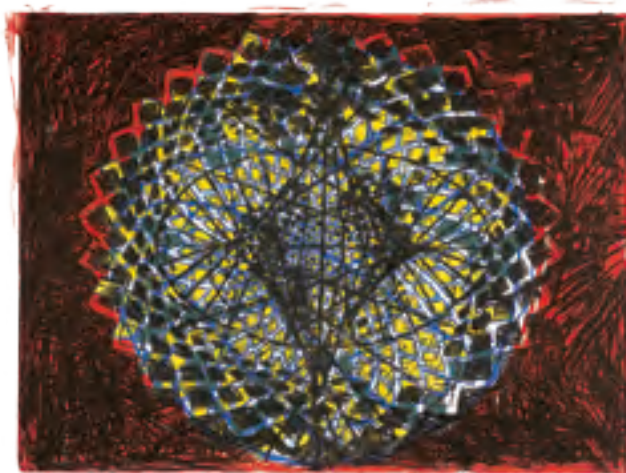
Printed Matters

February 12–May 10, 2015

Listen to this page.

Works by Bern Porter from
Colby College Special Collections

February 12–May 10, 2015



Terry Winters (American, b. 1949), *Clocks and Clouds/1*, 2013. Four color lithograph on Rives BFK paper, 36 x 46 in. Courtesy Gemini G.E.L. New York and Los Angeles.



free and open to the public

colby.edu/museum

Colby



5600 Mayflower Hill, Waterville, Maine 04901 207.859.5600
Tuesday–Saturday: 10am–5pm; Sunday: noon–5pm, Closed Monday
Open until 9pm on Thursdays during the academic year