

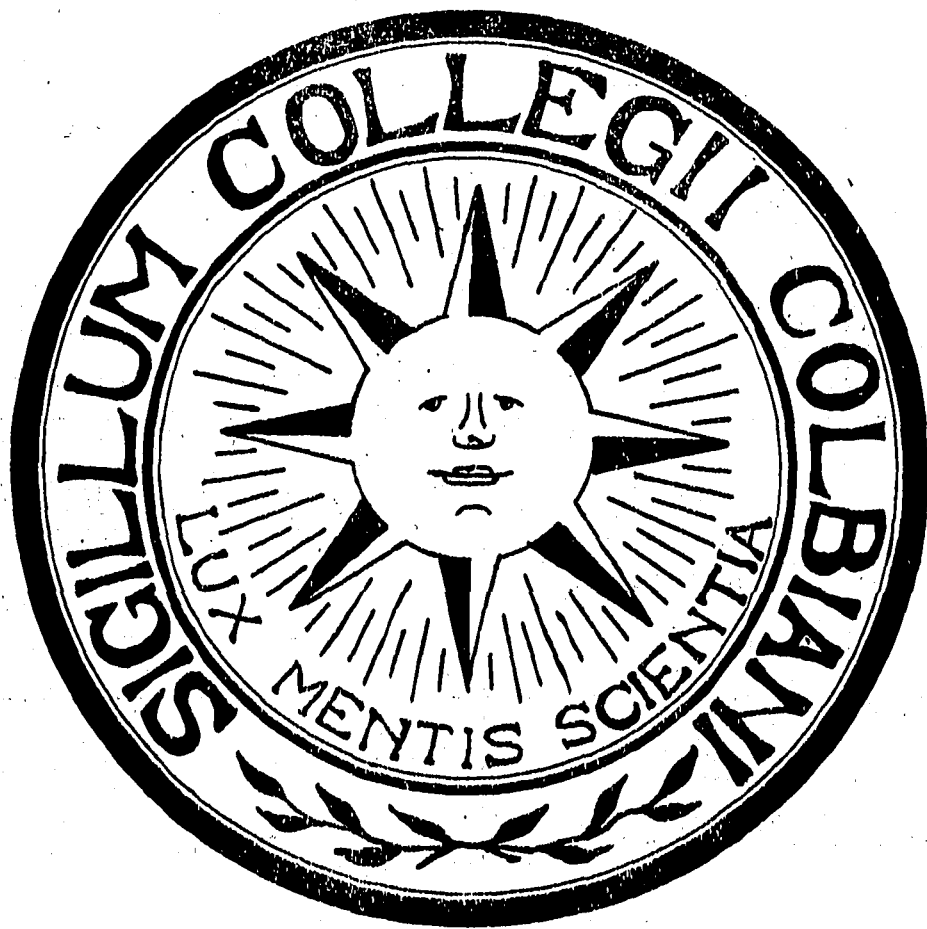
*Colby College Library
College*

The Golby Echo

Vol. XIX

Waterville, Maine, January 12, 1916

No. 12



PUBLISHED WEDNESDAYS DURING THE COLLEGE YEAR BY
THE STUDENTS OF COLBY COLLEGE

: The College Store :

Boys, we appreciate your business, but whether you want to buy or not we are always glad to see you

COME IN, LOOK AROUND AND MAKE

— This Store Your Store —

THE H. R. DUNHAM CO.

64 MAIN STREET

WATERVILLE, MAINE

A High Standard

of quality with prices consistent with the same is the aim of this store



EMERY-BROWN CO.

Department Store

WATERVILLE, - - - MAINE

ELEANOR R. GILLETTE

PUBLIC STENOGRAPHER

A Specialty of Note Books, Articles, Themes.

Tel. 53-W. Over Kelley's Book Store.

J. D. NEAL

Photographer

93 Main St., Waterville

PENOBSCOT EXCHANGE

MOON & CRATTY, Proprietors

BANGOR, - - - MAINE

COLBY COLLEGE

WATERVILLE, MAINE

Courses leading to the degrees of A. B. and S. B.

For Catalogue, Address
A. J. ROBERTS, President
Waterville, Maine

S. L. PREBLE

66 Main St., Waterville, Me.

College
Photographer

G. S. FLOOD & CO.

Shippers and dealers in all kinds of

Anthracite and Bituminous Coal

Also Wood, Lime, Cement, Hair, Brick,
and Drain Pipe.

Coal Yards and Office, Corner Main and Pleasant Streets

Down Town Office, S. E. WHITCOMB CO.
Up Town Office, E. L. GOVE
Winslow Office, E. W. ALLEN
Plains Office, ARTHUR DARVIAU, 83 Water St.

THE COLLEGE SUPPLY STORE

JOHN M. RICHARDSON, '16

ARTHUR M. RILEY, '16



Text Books Fountain Pens Banners
Scrap Books Stationery



A GENERAL COLLEGE SUPPLY

At The "Prom"

You will preserve the permanency of your social position and insure constant recognition as a correct dresser if your dress clothes are made by tailors who understand your requirements.

As the only merchant tailors maintaining a separate shop of experts

whose entire time is devoted to meeting these exacting demands, we are able to deliver faultless style and fit and absolute satisfaction in workmanship and quality, at an exceptionally low price. Make your requirements known to our local dealer,

ERVIN'S

who will show you our dress woollens and send us your correct measure.

E. V. Price & Co.

Largest tailors in the world of GOOD made-to-order clothes
Price Building Chicago, U. S. A.

Who's
TRADE MARK
Who's
REGD 1906 BY
Tailors?
ED. V. PRICE & CO.



THE COLBY ECHO

Volume XIX, No. 12

WATERVILLE, MAINE, January 12, 1916

Price Five Cents

WALDRON'S RETURN A GREAT ASSET TO RELAY TEAM.

The Boston A. A. relay games are now less than a month away. On February 5, at Mechanics Hall, Boston, Mass., Colby will strive to gain the championship relay honors of the state,—honors, which she won in 1914, but lost in 1915. Captain I. W. Merrill, along with such men as Ferrell, Howes, Waldron, Wiseman, Lattin, and Heyes, gives some clever exhibitions of relay running every afternoon. Besides those mentioned for the relay, there is a group of thirty-five or more men who are doing track work.

The new year brought to the Blue and Gray one joy and one sorrow as far as relay prospects are concerned. All the track enthusiasts welcome back to college "Ivy" Waldron, the 1914 quarter-mile champion of Maine. "Red" O'Brien, the star third man of last year's team, broke his arm in a basketball game during the recent holidays and will be unable to run, February 5. This will keep "Red" out of winter track work; but he will be all right for the two-mile, next spring.

RULINGS OF M. I. C. A. A.

At a meeting of the executive committee of the Maine Intercollegiate Athletic Association at the Elmwood, December 18, the University of Maine petitioned that the rule be changed which provided that the state track meet go in rotation to the four Maine colleges, the petition asking that the place of the meet be determined by the executive committee. It was voted, "Each college shall hold the annual track and field meeting in rotation, as stated in article XIII, section 4, provided the college whose turn it is to hold said meeting has a suitable track. Decision on this point is to be made by the executive committee each year."

It was moved that the rules of the M. I. C. A. A. govern all relay racing in which the colleges of said association take part, except those conditions expressly stated in the A. A. U. rules.

Changes in the cross-country scoring rules, to agree with the New England rules, were proposed as follows: "Each competing member of the association shall have scored against it the total of points tallied by the first five contestants competing for such member, and every contestant shall be scored in the place he finishes." This proposed change will be acted upon at the annual convention in February.

READING ROOM PROPOSED.

At a meeting of the finance committee of the board of trustees of the college, Saturday, at the office of Geo. K. Boutelle, Esq., Waterville, Professor Charles P. Chipman, the librarian, presented plans for increasing Colby's library facilities. The proposed plans involve several changes on the interior of Memorial Hall, the hall above the chapel to be used as a reading room and to be connected with the present library by the gallery floor. The committee transacted routine business preparatory to the annual mid-winter meeting of the board of trustees, which is to be held at Portland, next Saturday.

The members of the committee who were present at the meeting were Chairman George C. Wing of Auburn, Dudley P. Bailey of Everett, Mass., George K. Boutelle, Esq., of Waterville, and Dr. Charles E. Owen of Waterville. In consultation the following were also present: Judge Leslie C. Cornish of Augusta, chairman of the board of trustees, President Arthur J. Roberts and Professor Julian D. Taylor.

FIRST FACULTY TEA, TODAY.

The first of the series of college teas for the year was held this afternoon at the gymnasium, under the auspices of the wives of the members of the faculty. The "gym" was prettily decorated for the occasion. In the receiving line were Mrs. Ezra K. Maxfield, Dean Mrs. Mary C. Cooper, Mrs. Homer P. Little, Mrs. Frederick W. Grover, Mrs. Thomas B. Ashcraft and Mrs. Arthur J. Roberts. The pourers included Mrs. French E. Wolfe, Mrs. Benjamin E. Carter, Mrs. Henry W. Brown, Mrs. Clarence H. White and Mrs. George F. Parmenter.

FOOTBALL DANCE.

Colby's heroes of the gridiron displayed their chivalry, Tuesday evening, at the Silver Racquet, on the occasion of the annual football dance. The proceeds of the affair are to be expended for purchasing sweaters for the players of the 1915 'varsity eleven. Music was furnished by the Colby orchestra. The patrons were Professor and Mrs. J. William Black and Professor and Mrs. Homer P. Little. The committee in charge was composed of Captain Edward D. Cawley, Ex-Captain Irving R. Stanwood and Ex-Manager Robert A. Hussey.

ZETA PSI TAKES LEAD IN BOWLING LEAGUE.

Zeta Psi	22	6	.786
Delta Upsilon	19	9	.679
Commons Club	16	8	.667
Delta Kappa Epsilon	10	18	.357
Alpha Tau Omega	7	17	.292
Phi Delta Theta	6	22	.214

Records: High single, Cawley, 127; high total, Heath, 320; team single, Zeta Psi, 494; team total, Zeta Psi, 1399.

DECEMBER 15.

Zeta Psi, (4).

Barker	92	87	86—265
Libby	73	88	93—254
Heath	105	126	89—320
Leseur	82	75	85—242
Cawley	82	73	81—236

Delta Kappa Epsilon, (0).

Eaton	88	82	84—254
Bailey	93	81	85—259
Wyman	97	75	70—242
Chittenden	78	74	93—245
Young	71	87	75—233

DECEMBER 15.

Delta Upsilon, (3).

Brown	104	91	96—291
O'Brien	82	83	76—241
Craig	75	87	71—233
Adams	82	87	102—271
Allen	111	94	97—302

Commons Club, (1).

King	80	104	98—282
Skillin	85	91	64—240
Fieldbrave	111	95	81—287
Whittemore	77	90	98—265
Goodrich	95	80	88—263

JANUARY 6.

Delta Kappa Epsilon, (3).

Bailey	70	87	87—244
Smith	95	86	94—275
Wyman	87	91	82—260
Chittenden	70	73	85—228
Young	77	84	94—255

Phi Delta Theta, (1).

Greer	78	102	76—256
Blackinton	80	83	69—232
Kimball	89	78	84—251
O'Neill	70	71	81—222
Hastings	77	102	77—256

JANUARY 7.

Zeta Psi, (3).

Barker	87	87	84—258
Libby	100	98	95—293
Heath	102	87	87—276

Leseur	79	95	80—254
Cawley	95	127	96—318

Delta Upsilon, (1).

Brown	83	82	90—255
Sully	74	83	97—254
Craig	76	80	79—235
Adams	85	72	105—262
Allen	109	98	100—307

JANUARY 8.

Commons Club, (4).

King	70	74	75—219
Patterson	93	85	79—257
Fieldbrave	86	100	77—263
Whittemore	76	75	79—230
Goodrich	95	93	105—293

Alpha Tau Omega, (0).

Howes	97	83	94—274
Harriman	83	72	79—234
Stanwood	70	80	81—231
Smith	76	76	76—228
Higgins	83	83	81—247

JANUARY 10.

Delta Upsilon, (3).

Brown	69	99	85—253
Erb	83	78	90—251
Craig	80	88	99—267
Adams	78	94	91—263
Allen	95	97	93—285

Delta Kappa Epsilon, (1).

Bailey	89	81	87—257
Wyman	87	77	76—240
Smith	81	91	85—257
Young	78	104	89—271
Eaton	102	81	72—255

JANUARY 11.

Zeta Psi, (4).

Barker	99	95	91—285
Libby	109	107	78—294
Heath	104	82	89—275
Leseur	93	94	93—280
Cawley	86	97	81—264

Phi Delta Theta, (0).

Hastings	74	95	68—232
O'Neill	76	106	96—278
Kimball	77	91	96—266
Blackinton	71	79	75—225
Greer	98	73	79—250

Military drill, so far as is practicable without the use of rifles, will begin next week under the direction of Coach Harvey Cohn. The manoeuvres will include formation drilling, wall scaling and so forth. If guns can be obtained, the training may later take on a more earnest aspect.

TWO DUAL TRACK MEETS HERE, NEXT SPRING.

At the January meeting of the Athletic Council, Monday night, the following track schedule, arranged by Manager Little for next spring, was accepted, subject to faculty approval:

April 29.—Dual meet with U. of M. at Waterville.

May 6.—Dual meet with Worcester Polytech at Waterville.

May 13.—Maine Intercollegiate meet at Brunswick.

May 20.—New England Intercollegiate meet. (Place not yet decided.)

May 27.—National Intercollegiate meet. (Place not yet decided.)

We have here the best schedule in several years. It has been a long time since Colby has had dual meets with either the University of Maine or Worcester Polytech, and the fact that they both are to be held at Waterville makes them especially important to us.

On the whole, track prospects look fairly well this year. Though the loss of Howe means ten sure points gone in the Maine Intercollegiates, and probably in the New Englands, this year's team seems better balanced than it has been for several seasons.

The council also awarded a football "C" to Ralph Kolseth, '16.

COMING EVENTS.

Jan. 13-19.—Rev. George R. Stair, at the chapel.

Jan. 14.—6 o'clock, supper, Cong'l Vestry, College Men's Class, with guests. Address by Arthur A. Heald, Men's Secretary, State Y. M. C. A.

Jan. 15.—P. M., First trials for Colby-Maine debate.

Jan. 21.—College Chapel, First of a series of addresses by members of the Class in Advanced Public Speaking.

Jan. 24.—College Chapel, Second of a series of addresses by members of the Class in Advanced Public Speaking.

Jan. 28.—6 P. M., First Semester ends.

Jan. 31-Feb. 5.—Midyear examinations, Monday, Jan. 31, to Saturday, Feb. 5.

Feb. 8.—8 A. M., Second Semester begins.

Mar. 10.—Annual Dual Debate with the University of Maine.

Mar. 12.—Annual Goodwin Interscholastic Prize Debating Contest—Forenoon, afternoon, and evening.

Stanley B. Miller, '14, is enjoying a short vacation from his work with the Mutual Candy Company of Boston, in which firm he has been employed as a traveling salesman since July 1. He is staying at the A. T. O. House.

REV. MR. STAIR TO BEGIN SERVICES, THURSDAY NIGHT.

In chapel, Tuesday morning, President Roberts made a very fitting reference to the coming to Colby of Rev. George R. Stair of Portland and to the work which he is to undertake. He expressed appreciation that the students had set aside some social and other functions, in order not to interfere with the religious activities contemplated. The meetings, he said, are to be frankly evangelistic. They will afford an opportunity for every right-minded student consciously to face the problem of his personal responsibility to God.

Mr. Stair is, perhaps, the most popular religious speaker in the State. His church in Portland is the largest in the Baptist denomination of Maine. We are fortunate to have him with us again, for a week of special services.

VACATION STUDIES—A LA WALT MASON.

When our quizzes all are finished and for Christmas we prepare, we stop and gaze around us with a feeling of despair. There's this undone and that undone—back work we meant to do—but you know how 'tis sometimes, and how your best laid plans fall through? That "Ecy" outside reading, those Physics notes and such; that pesky Greek Art notebook, or the work we missed in "Dutch"—we didn't know there was so much; it seems a crushing lot; but when to grief we're yielding, there comes up a happy thought: "We'll do it all in Christmas!" and, lo! our cares are gone—our worries o'er belated work, our self-reproach forlorn. We stuff our trunks with ponderous tomes, we plan two weeks hard toil; we'll labor earnestly and late, we'll burn the midnight oil!

Well, Christmas is all over—we're back again, today. "Hi, John! I'm glad to see you! You're looking well; O, say! I s'pose you've got that back work done? All that you meant to do?" "Did I? No, Jim, I didn't." "You didn't? Good for you! I s'pose that you went skating? And hunting? Sure, I know! Went tramping out on snowshoes on the newly fallen snow?" "Say, John, I feel ten times as well! I gained five pounds last week! I've done 'most everything but work—hey, there, why don't you speak? Oh, I can see you grinning! But then, we had some fun! So what's the use of fibbing? Sure! We're glad it isn't done!"

F. A. P.

Fred Gagne, a local wrestler, has offered to instruct any Colby man in his interesting branch of sport. Every afternoon in the "gym" Mr. Gagne will meet his pupils.

THE COLBY ECHO

Published Wednesdays During the College Year
by the students of
COLBY COLLEGE

EDITORIAL BOARD

Editor-in-chief.....Burton B. Blaisdell, '16

Associate Editors

E. Donald Record, '17 Claude A. LaBelle, '17
Hugh S. Pratt, '17 Fred A. Pottle, '17

News Editors

Norman D. Lattin, '18 E. Reginald Craig, '18
Merle A. Wood, '18 Paul A. Thompson, '18
Burton E. Small, '18 Daniel J. Sullivan, '18
Faculty Advisor.....Professor H. W. Brown
Business Manager.....Scott D. Staples, '16
Assistant Manager.....Morrill L. Isley, '17
Mailing Clerk.....Harold W. Goodrich, '18

Exchanges and all communications relating to the Literary and News departments of the paper should be addressed to THE COLBY ECHO, Waterville, Maine. Faculty, Students and Alumni are requested to contribute.

All remittances by mail should be made payable to the Business Manager.

Subscriptions.....\$1.00 per year in advance
Single Copies.....Five Cents

Entered at the Post Office at Waterville, Maine, as Second Class Mail Matter

PRESS OF THE CITY JOB PRINT

In this number, the first issue for 1916, the ECHO extends to all best wishes for a happy and prosperous New Year.

We are presenting in this issue a new feature in the form of a college calendar, which we hope to run for the remainder of the year. Many times conflicts exist between events which are scheduled for the same date. With the co-operation of the leaders of the various activities in college, the ECHO can preclude such difficulties in the arrangement of dates. The editor will be pleased to receive data concerning coming events.

At the opening of the current collegiate year, the management of the ECHO increased the reading space of the paper and added a number of new features, assuming that the students and graduates of the college, in appreciation of the change for the better, would support the publication by at least subscribing for it. We regret to say that this obligation of loyalty on the part of the students and alumni has not been fulfilled. Unless more subscriptions can be secured, the reading space of the ECHO must necessarily be reduced. But, on the other hand, if you are willing to support the

paper, if you are not already a subscriber, by handing in your subscription to the business manager, we can continue the endeavor to place the ECHO on a progressive basis. The ECHO will be delivered to your address for the remainder of the college year for fifty cents, payable in advance.

PRESS CLUB ELECTS OFFICERS.

At a meeting of the Colby Press Club, Monday, the following officers were elected for the ensuing year: President, Burton B. Blaisdell, '16, New Harbor; vice-president, Donald W. Tozier, '17, Waterville; secretary, Cyril M. Joly, '16, Waterville; treasurer, William R. Pederson, '19, Portland; executive committee, Frederick F. Sully, '16, Philadelphia, Roy Hayes, '17, Vassalboro, and Professor Frederick G. Fassett.

The members of the club serving as newspaper correspondents, together with the papers which they represent, are: Mr. Blaisdell, Lewiston Journal, Boston Transcript and Boston Journal; Mr. Sully, Portland Evening Express, Boston American, Boston Herald and Boston Post; Mr. Tozier, Waterville Sentinel; Mr. Joly, Kennebec Journal; Mr. Pederson, Portland Argus; Mr. Hayes, agent for Frederick A. Shepherd service.

FEBRUARY TRIP FOR MUSICAL CLUBS.

At a meeting of the officers of the musical clubs, last Thursday, it was decided to petition the faculty for a week's leave, directly following the mid-year examinations, in order to take a trip to the coast. The petition has since been granted and a schedule including dates at Camden, Rockland, Vinalhaven, Belfast, Brooks, and Clinton has been arranged by Manager Campbell. The clubs are having some good rehearsals and are rapidly rounding into shape. They are, as a whole, remarkably well balanced. A concert will be given at Fairfield, January 21.

RIFLE CLUB ACTIVE.

The Colby Rifle Club, which was granted a charter by the National Rifle Association last year, has announced that a cup will be awarded to the fraternity team of five men which makes the highest score in an indoor contest to be begun immediately. The purpose of the contest is to "get a line" on a team to represent the college in any matters the club may arrange. An election of officers will be held sometime this week.

The Dramatic Club resumed rehearsals for "The District Attorney," this week. On account of the illness of H. Price Webber, the coach, the first performance of the play will be postponed to the week after the mid-year examinations.

CAMPUS CHAT.

Welcome Rev. George R. Stair!

Mark R. Thompson, '17, represented Colby at an athletic meeting held at Hotel Astor, New York City, December 27, 1915. The meeting was one of a series held to determine the difference between amateur and professional athletes. Among the representatives at the meeting were college deans, professors, presidents of athletic organizations, athletic directors, and undergraduates from all over the United States.

Robert Carey, '19, has returned to college.

Paul Shailer, '16, spent the Christmas vacation in a hunting trip to the Rangeley Lakes.

Errol Chase, ex-'18, was a visitor at the A. T. O. House, Monday.

Professor and Mrs. J. William Black spent the Christmas vacation in Baltimore.

President Roberts addressed the Bangor Y. M. C. A., Sunday afternoon. He spoke to the library committee of the Woman's Club, at Library Hall, Tuesday evening, on the subject, "Howells."

Wm. Beal, '14, principal of the Hallowell High School, was at the Zeta Psi House, Saturday and Sunday.

The A. T. O. basketball team, composed of Hariman, '16, Smith, '16, Higgins, '16, Howes, '18, Conlon, '18, and Coolidge, '19, trimmed the North Vassalboro A. C. in a fast game, Monday night, to the tune of 41-9. Hayes, '18, accompanied the team and served as referee.

"Len" Grant, '15, was a visitor at the Deke House, last week.

George ("Souise") Perry, '14, spent part of his Christmas vacation at the Deke House. "Souise" is at present connected with Y. M. C. A. work in Columbia University.

"Fergie" Murch, '15, visited at the D. K. E. House during vacation. "Fergie" is an instructor in science at Dartmouth.

"Buster" Holt, '15, was in town, Saturday.

Ralph Smith, '17, was a visitor at Clinton, Sunday.

The trials for the Murray Prize Debate took place Saturday afternoon. The announcement of the "successful six" will be given in a few days.

Professor Ezra K. Maxfield will represent Colby at the annual conference of New England colleges on entrance requirements in English, to be held, February 5, at Simmons College.

It is hoped that the 1915-16 Colby catalogue will be ready for distribution by mid-years. Professor Robert W. Crowell is the editor.

The report of the 1915 Christmas gifts to the college will soon be issued to the public. It is understood that there is no decrease over 1914 either in the number of donors or in the amount received.

Remember that all senior and fraternity pictures for the 1916 Oracle must be taken before February

1. All fraternity and group pictures are to be taken at Preble's studio, but the seniors may have their individual pictures taken wherever they wish.

Miss Ware, '16, art editress, is ready to accept drawings for the Oracle. Those having drawing ability should see her or Editor Riley at once. Get busy and help to make the Oracle better than ever!

Norman J. Merrill, '14, athletic coach and instructor in science at St. George's School, Newport, R. I., was a guest at the Phi Delta Theta House, last week.

WOMEN'S DIVISION.

Edited by the News Department of the Colbiana.
1916—Effie May Hannan.
1917—Marion Ruth Daggett.
1918—Isabelle Hervey Wing.
1919—Mary Elizabeth Tourtellott.
Business Manager—Carolyn Isabel Stevens, '16.

Dorothy Churchill, '19, has returned home on account of illness to remain until next semester.

Vivian Ellsworth, '15, and Emily Cunningham, '15, who are teaching at Yarmouth, visited friends in college over Sunday.

Dora Libbey, '13, has been entertained in town for a few days.

Alice Clarkin, '16, has been obliged to stay out of college for a few days on account of illness.

There is a Silver Tea scheduled for Jan. 19, for the benefit of the library.

Lura Dean, '19, who went home just after the Thanksgiving recess, on account of illness, will be unable to return to college this year.

Violet French, '17, who has been ill for some time went to the Sisters' Hospital, Sunday, for treatment of heart trouble. It is hoped that she will be able to return to college after the mid-year exams.

The subject of the Y. W. C. A. meeting this week was, "How One May Live Twenty-four Hours a Day." The meeting was led by Ella Robinson.

Attalena Atkins, '17, has not been able to return to college on account of illness. She will return after "mid-years."

Thanks to the precautionary measures taken, an epidemic of "la grippe" has not spread among the girls.

Iris Crosby, '16, who has been in quarantine for bronchitis for a few days, has recovered her health as well as her voice.

Many of the Colby girls attended the Oberammergau lecture given by Fraulein Meyer. She took the part of Mary Magdalene in the Passion Play of 1910. This insured an interesting and instructive lecture.

Eunice Chase who was unable to return to college at beginning of the term is with us once again.

Martha Gregory, '19, who was called home, Friday night, by telegram returned to college, Monday.

Miss Harriet Sweetser of Yarmouth was a guest of the "Titcomb Twins," '19, last week.

Mildred Jordan, '19, who was operated on for appendicitis, just before the Christmas vacation, has returned to college.

Christine Brophy and Marian Drisko of Wheaton were the guests of Helene Blackwell, '19, one day last week.

CHI OMEGA BANQUET.

Beta chapter of the Chi Omega fraternity held its annual initiation banquet at the Elmwood Hotel, Friday evening.

Miss Mina Titus, the toastmistress, assisted by Miss Marjorie Barker as choragus, introduced the speakers, who spoke of "Chi Omega's Perfect Day." The speakers from the initiates were Miss Mary E. Tourtilotte and Miss Harriet Eaton, who spoke of "Darkness" and "Dawn." The subjects which followed were: "Morning Light," Miss Marie Louise Merrill, '18; "Sheltering Shade," Miss Marion Isabel Starbird, '18; "Noonday Sun," Miss Marie F. Stanley, '17; "Lengthening Hours," Miss Annie Violet French, '17; "Parting Day," Miss Marion Harmon, '16; "Sunset Hues," Miss Katharine H. Singer, '16; "Afterglow," Miss Berle Cram, '16; "Lasting Rays," Miss Alice Cornell Mather, '16.

The impromptu speeches were much enjoyed, especially those by the alumnae members present, among whom were Miss Genevieve Barker, ex-'14, Miss Ethel Merriam, '14, Miss Jeanette Sturtevant, Miss Eva Macomber, '13, Miss Dora Libbey, '13, and Miss Florence Stobie. Miss Helen Bugbee and Miss Bernice Reed were present as delegates from New Hampshire State College.

The initiates:

1917.—Eva Marion Bean.

1918.—Lucille Rice.

1919.—Helen L. Baldwin, Alice Virginia Barbour, Mildred Cook, Mira Louise Dolley, Harriet Eaton, Phyllis Ruth Sturdevant, Mary Anne Titcomb, Matilda Evelyn Titcomb, Margaret Totman, Mary Elizabeth Tourtilotte, Marion Josephine Williams.

DELTA DELTA DELTA.

The eighth annual initiation banquet of Alpha Upsilon Chapter of Delta Delta Delta was held Saturday, January 8, 1916, at the Elmwood. The tables arranged in the Greek "Delta" seated about fifty happy girls. The decorations consisted of a low banking of pine, the sorority tree, on the inside of the Delta around the tables, with pansy faces peeping out at frequent intervals. Low bowls of pansies were on the tables, as well as vases of white roses, the chapter

flower. The place cards were dainty hand-painted Deltas through which was put a small scroll with the name and a small design. The favors were green suede vanity cases.

The toast program was rather novel, being in form of a Tri-Delta exposition. Each speaker figuratively told of a special exposition building.

Among the loyal alumnae present were: Marion Brown, '12, Eva Reynolds, '12, Louise Springfield, '11, Emily Cunningham, '15, Vivian Ellsworth, '15, Hazel Ross, '15, Lena Blanchard, '15, Mary Washburn, '15, and Marion Steward, '15.

Iris Crosby was toastmistress and exposition guide. The choragus was Anne Caswell, '15.

The speeches: "Welcome to Delta Delta Delta Exposition, 1916," Effie M. Hannan, '16; "Palace of Education," Alice A. Clarkin, '16; "Manufactures Building," Margaret Brown, '17; "Horticultural Building," Flora A. Norton, '17; "Palace of Varied Industries," Madeline Daggett, '17; "Pleasure Zone," Anne M. Caswell, '18; "Palace of Fine Arts," Phoebe J. Vincent, '17; "Delta Delta Delta Viewed by the Exposition Tourist," Margaret Hoffman, '19; "Illuminations," Marion Steward, '15.

Initiates: 1917.—Grace Fletcher, Myra Cross, Leonora Knight. 1918.—Alta Davis. 1919.—Anna Anderson, Hilda Bradbury, Minerva Bradstreet, Mildred Dunham, Martha Gregory, Elizabeth Hoffman, Margaret Hoffman, Ruth Holbrook, Margaret Putnam, Almira Schaubel, Dorothy Churchill.

KEEP
WARM



BY WEARING THE
WORLD KNOWN

WRIGHT & DITSON
SWEATERS

Made of the finest and most lustrous worsted obtainable, on machines which fashion them to the body, thus insuring their holding in shape indefinitely. **Reversible Collar, Regular Jacket, V-Neck and Collarless styles.**

Catalogue Mailed Free

WRIGHT & DITSON

Boston

Worcester

New York

Providence
Cambridge

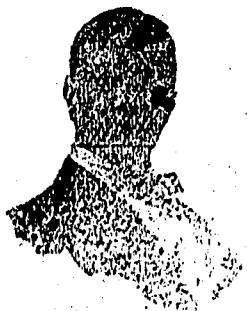
ALPHA DELTA PI BANQUET.

The first annual initiation banquet of Alpha Delta chapter of Alpha Delta Pi was held at the Elmwood, Friday, December 17. The tables, arranged in the shape of a diamond, were beautifully decorated with violets, the sorority flower. Ernestine Porter, '16, as toastmistress, introduced the following toasts:

"Welcome," Ida Browne, '16; "Response," Hazel Gibbs, '17; "Our Motto," Ella Robinson, '16; "Friendship," Marion Tobey, '16; "Memories," Aldine Gilman, '15; "The Future," Violet Shaw, '18.

Initiates: 1917.—Hazel Millicent Gibbs, Lillian Nina Tuttle. 1918.—Doris Perkins Andrews, Leah Marion Horne. 1919.—Marion Campbell, Alberta Lurena Getchell, Beatrice Eveline Bowler, Marion Steward Tobey.

Rehearsal for the senior play has begun again in earnest. The play, "A Girl in a Thousand," will be presented just before the mid-year exams. Ella Robinson will take the part of "Grannie Morris" in place of Katharine Moses.



**POPULAR
GEO. STAIR**

**First Baptist Church
— SUNDAY —**

Boston University Law School

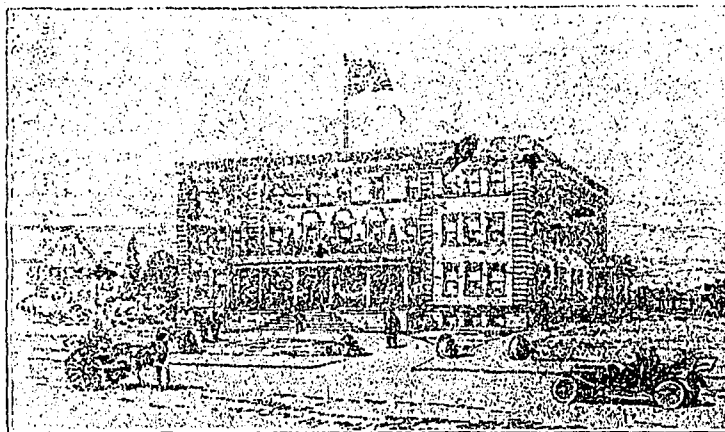
THREE YEARS' COURSE

COLBY graduates are permitted to take the course for the Bachelor's Degree in two years, provided their college courses include certain legal studies (e. g., Constitutional Law, etc.), and if they obtain high standing. Special scholarships (\$50 per year) for college graduates.

Address, **DEAN HOMER ALBERS**
11 Ashburton Place BOSTON

THE CITY JOB PRINT
— IS THE —
College Job Print
Saving Bank Building - Waterville

SOCIAL HEADQUARTERS FOR COLBY MEN



RAILROAD Y. M. C. A.

Membership Fee, \$1.50 per year
Pocket Billiards Bowling Shower Baths
Reading room with Boston, Portland and
Bangor Daily Papers
RESTAURANT ALL HOME COOKING

Globe Steam Laundry

COLBY SUPPLY STORE

J. M. RICHARDSON ZETE HOUSE

LAWRY BROS. CO.

COMPLETE HOUSE FURNISHERS

FAIRFIELD, MAINE.

¶Get our prices on furnishings.
¶Everything needed for the room or den.
¶Open evenings except Tuesday and Thursday

SILVER THEATRE

BEST PICTURE SERVICE IN THE CITY

Famous Players Co. Stars including Mary Pickford,
Marguerite Clark and Hazel Dawn.

WE WANT all Colby Students
to feel welcome at

HAYDEN'S

Homemade Candles, Hot and Cold Drinks
Ice Cream and Catering
122 Main Street, Waterville, Maine

E. S. DUNN & COMPANY

Merchant Tailors

6 Silver Street

Waterville, Maine

Cleaning and Pressing

Telephone 26

**GOTHIC THE NEW
ARROW
2 for 25c COLLAR
IT FITS THE CRAVAT**



CLUETT, PEABODY & CO., INC., MAKERS

COLLEGE AVENUE PHARMACY

W. C. JUDKINS & CO.

DRUGGISTS

Opposite Athletic Field

DR. E. H. KIDDER

DENTIST

148 Main Street,

Telephone

WATERVILLE, MAINE

Tel. 410

William C. Hawker

THE REXALL DRUG STORE

Opposite L. H. Soper Dry Goods Co.

WATERVILLE, MAINE.

S. A. & A. B. GREEN COAL

Otto Coke, Hard and Soft Wood
and Kindlings

WATERVILLE, MAINE

Tel. 30

Office, 251 Main St.

KENNEDY & WALLACE

Formerly Weir's Cafe

THE PLACE FOR A FIRST CLASS LUNCH

Opposite the Campus

WATERVILLE TYPEWRITER EXCHANGE

89 Main St. Waterville, Maine.

All kinds of TYPEWRITERS to sell and to rent
High Grade Supplies

A fine line of College Jewelry
Next door below the W. & F. Waiting Room

D. FORTIN

WATCHMAKER AND JEWELER

Engraving a Specialty

30 Common Street

IF you need a reliable Watch, Clock or
article of Silverwear or Jewelry, some-
thing up-to-date, but at a reasonable price,
call at

HARRIMAN'S

SHOES

For College Men and Women
THE GALLERT SHOE STORE

OH U Cold Weather Drinks and Goodies

HAGER'S For Me

133 Main Street

The Bowdoin Medical School

ADDISON S. THAYER, Dean
10 Deering Street Portland, Maine

Special Dinners

50 Cents

Special Suppers

25, 35 and 40 Cents

—AT—

Buzzell's Chop House

63 Temple Street, Waterville

Open Day and Night

W. L. CORSON, 66 MAIN STREET

Waterville, Maine

PHOTOGRAPHIC VIEWS

Films developed and printed to obtain best results
Kodak frames and calendar pads

COPYING AND ENLARGING

AUGUSTUS OTTEN

Manufacturer of Bread, Cake and Crackers

WATERVILLE, MAINE

Tel. 126

89-41 Temple Street

Student Headquarters for Custom-Made Clothes



Large line of novelty woolens, clothes specially designed for young men. Pressing and Repairing department. Prompt Service.

L. R. BROWN

CASH MERCHANT TAILOR

98 MAIN ST.

Ticonic National Bank

GEO. K. BOUTELLE, President

H. D. BATES, Cashier

TRANSACTS A GENERAL BANKING BUSINESS

Pays 4 per cent. interest in Savings Department

Open Saturday Evenings, 7 to 9

S. E. WHITCOMB CO.

GROCERIES, MEATS, FISH, PROVISIONS,
FRUIT AND CANNED GOODS

Tel. 261 & 262

81 Main Street

THE "WOMEN'S SHOP"

Ladies' Coats and Suits, Corsets, Gloves, Underwear,
Waists, Hosiery, Sweaters, Etc.

Everything usually found in a first-class Dry Goods Store.

WARDWELL DRY GOODS CO., 76 Main St., Waterville

Day & Smiley Co.

CONTRACTORS AND BUILDERS

Jobbing Promptly Attended to.

Shops opposite City Hall. Front Street.

Dr. Gordon B. Hatfield

DENTIST

Gold Work a Specialty

Savings Bank Bldg., 173 Main St., Waterville, Maine
Telephone Connection

T. A. GILMAN

OPTOMETRIST AND OPTICIAN

Broken Lenses Replaced

92 Main Street

WATERVILLE, MAINE,

HORACE PURINTON CO.

CONTRACTORS AND BUILDERS

Manufacturers of Brick

Estimates furnished on application

Head office at Waterville, Maine

ROLLINS-DUNHAM COMPANY

HARDWARE DEALERS

Sporting Goods, Paints and Oils

Waterville, Maine

COME TO

Dunbar's Drug Store

FOR YOUR DRUG STORE WANTS

118 Main Street

Waterville, Maine

THE ELMWOOD HOTEL

Run by
College Men
for
College Men

THE FASHION SHOP

Coats, Suits, Millinery
Corsets, Gloves, Waists
and Furs :: :: :: :: ::

E. A. Cloutier, Manager

DR. C. F. KIDDER

DENTIST

Telephone 328-J

60 Main Street

Waterville, Maine

COPLLEY SQUARE HOTEL

HUNTINGTON AVENUE, EXETER AND BLAGDEN STREETS

BOSTON, MASS.

Headquarters for professional, college, and athletic teams when in Boston.

360 Rooms

200 Private Baths

AMOS H. WHIPPLE, Proprietor.

L. H. Soper Company

DRY GOODS GARMENTS MEASUREMENTS RUGS

Waterville, Maine

Everything Electrical

To make your room
Cosy and Homelike

Study Lamps of all kinds

Central Maine Power Co.

A Gas Range

IS A

Coal Stove

WITH A

College Education

IT PAYS TO

Cook With Gas

KENNEBEC GAS & FUEL CO.,

Tel. 750.

17 Silver Street

Boothby & Bartlett Co.

GENERAL INSURANCE

176 Main Street

WATERVILLE, MAINE

REDINGTON & COMPANY

House Furnishers

FURNITURE, CARPETS, CROCKERY,

Mirrors, Mattresses, Feathers, Etc.

We Re-upholster Old Furniture and Repolish Frames

SILVER STREET, WATERVILLE, ME.

H. L. KELLEY & CO.

Colby Memorabilias
Pennants and Seals

Agents for Conklin, Moore and Waterman
Fountain Pens

Books and Stationery

Picture Framing a Specialty

130 Main Street

Waterville, Maine

— You will find at —

Armstrong's Cash Grocery

60 Temple Street, Waterville

The best line of Groceries, Teas and Coffees

AT REASONABLE PRICES.

TRY OUR PORTO RICO COFFEE.

Fernando, 30 cts.

Coffee of Royalty, 35 cts.

Queen Isabela, 38 cts.

Remember these brands can only be found at our store

Everything Guaranteed.

Free Delivery.

Tel. 720



City Opera House

Moving Pictures

AND VAUDEVILLE

G. H. SIMPSON

J. E. LaCHANCE

SIMPSON & LaCHANCE

CLOTHING AND GENTS' FURNISHINGS

BOOTS AND SHOES

Common Street

Waterville, Me.

READY FOR WINTER

EVERYTHING FOR THE STUDENT

Mackinaws, Sweaters, Sporting Goods

Lamson & Hubbard Hats

Bates St. and Remington Shirts

The Waterville Home of

HART SCHAFFNER & MARX CLOTHES

See our Model Varsity 55 Suit—and—Varsity Six Hundred Overcoat

J. E. JACKSON CO.

62 MAIN STREET

WATERVILLE

J. H. DeOrsay

DRUGGIST

(Successor to Wm. C. Hawker & Co.)

70 Main Street, WATERVILLE, MAINE.

Agency

Marie Saunders', Whitman's, Foss Chocolates

KODAK
SUPPLIES

Coburn Classical Institute

Waterville, Maine

Coburn has been attended by more than six thousand students. More than twelve hundred have prepared for college. Thorough courses are maintained. The faculty is composed of well trained and efficient teachers. Coburn is well located and well equipped. Splendid opportunities for athletics under skilled directors. Expenses moderate. Eighty-seventh year began, September 7, 1915.

For information address the Principal

DREW T. HARTHORN.

Rocheater Theological Seminary

ROCHESTER, N. Y.

FACULTY—Of fifteen Professors and Instructors (including five in the German Department)

NINE DEPARTMENTS—Old Testament, New Testament, English Bible and Biblical Languages, Church History, Systematic Theology, Christian Ethics (including Sociology) and Pastoral Theology, Homiletics, History and Philosophy of Religion and Missions (including Religious Education), Elocution. Courses partly elective. Series of special lectures throughout the year by eminent men.

EQUIPMENT—New and completely furnished dormitory with gymnasium, music room, and parlor, for social gatherings; library enlarged and improved; attractive reading room; commodious chapel and class rooms.

ROCHESTER—A growing and prosperous city of 250,000. Many varieties of religious and philanthropic work. Strong churches with able preachers. Noted for its Sunday schools. Unusual opportunities for observation and practical experience. Privileges of the University of Rochester.

Address all requests for catalogues, correspondence regarding admission, etc., to

CLARENCE A. BARBOUR, Pres., or to J. W. A. STEWART, Dean.