

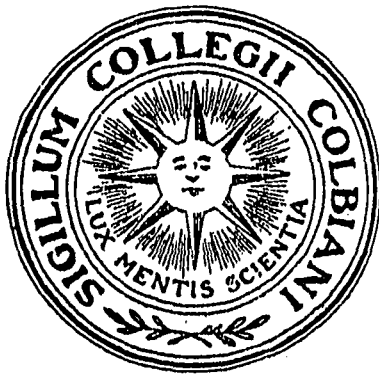
1208 Main St. Chapman
City

The Colby Echo

Vol. XVIII

Waterville, Me., March 17, 1915

No. 20



PUBLISHED WEDNESDAYS DURING THE COLLEGE YEAR BY
THE STUDENTS OF COLBY COLLEGE

COLBY GIRLS:

WILL FIND OUR STORE TO BE THE PLACE TO
BUY COATS, SUITS, WAISTS, GLOVES, CORSETS,
UNDERWEAR AND HOSIERY.

WARDWELL DRY GOODS COMPANY

76 MAIN STREET, WATERVILLE, MAINE

AUGUSTA HOUSE

WILBUR T. EMERSON, Manager

AUGUSTA, MAINE

Special Attention Given to Banquets

Saddle and Carriage Horses TO LET

W. H. POLLARD

Phone 273-M

12 CHARLES ST.

Day & Smiley Co.

Contractors and Builders

Jobbing Promptly Attended to.

Shops Opposite the City Hall. Front Street

COME TO

Dunbar's Drug Store

FOR YOUR DRUG STORE WANTS

118 Main Street

Waterville, Me.

CUT FLOWERS

MITCHELL & CO.

FLORISTS

144 Main Street

Waterville, Maine

S. A. & A. B. GREEN

COAL

OTTO COKE, HARD AND SOFT WOOD
AND KINDLINGS

Waterville, Maine.

TELEPHONE, 30

OFFICE, 251 MAIN STREET

DR. C. F. KIDDER

DENTIST

Telephone 323-J

60 Main Street

Waterville, Maine

EMERY-BROWN COMPANY

DEPARTMENT STORE

The Quality of Our Merchandise

is the kind which appeals to discriminating people, and while our
standard of quality is high our prices are very moderate.

WATERVILLE,

MAINE

THE COLBY ECHO

COLBY COLLEGE

WATERVILLE, MAINE

Courses leading to the degrees of A. B. and S. B.

For Catalogue, Address

A. J. ROBERTS, President

Waterville, Maine

S. L. PREBLE

66 Main Street, Waterville, Me.

College
Photographer

G. S. FLOOD & CO.

Shippers and dealers in all kinds of

Anthracite and
Bituminous Coal.

Also Wood, Lime, Cement, Hair, Brick,
and Drain Pipe.

Coal Yards and Office, Corner Main and Pleasant Streets

Down Town Office, S. E. WHITCOMB CO.

Up Town Office, E. L. GOVE.

Winslow Office, E. W. ALLEN.

Plains Office, ARTHUR DARVIAU, 83 Water St.

THE COLLEGE SUPPLY STORE

JOHN M. RICHARDSON, '16

ARTHUR M. RILEY, '16



Text Books

Banners

Stationery

Fountain Pens

Scrap Books



A GENERAL COLLEGE SUPPLY

Whose Your Tailor?
REGISTERED IN U.S. PAT. OFF. 1906. BY ED. V. PRICE & CO.



The Little Schoolmaster Says:

Are you as careful to weigh values and get maximum usefulness from your clothes as you are in buying other things? You surely ought to be, and if you'll have

ERVIN'S

our exclusive local dealer, send us your measure and your favored style and woolen, we'll deliver you the finest Spring custom-tailored clothes you ever wore at any price.

Be Measured Today!



Ed. V. Price & Co.

Largest tailors in the world of GOOD made-to-order clothes
Price Building Chicago, U. S. A.

THE COLBY ECHO.

Volume XVIII, No. 20.

WATERVILLE, MAINE, MARCH 17, 1915.

Price Five Cents.

MUSICAL CLUBS SCORE BIG HIT.

MURCH'S IMPERSONATIONS AND LATTIN'S SOLOS THE FEATURES OF FINE CONCERT.

The Waterville concert of the Glee and Musical clubs for the year 1915 has become history. Friday night, at the City Opera House, was presented probably the finest concert, considered from start to finish, ever produced by a glee club in the long and glorious annals of old Colby. Waterville citizens who didn't attend will never imagine what they missed, for the concert proved to be among the elite of musical programs, polished in every way and executed in a manner worthy to be presented before the crowned heads of Europe. Probably never before, surely not in recent years, has so brilliant an entertainment been produced by Colby men.

Shortly after eight o'clock nearly every seat in the Opera House was occupied, practically every student of both divisions being on hand, as were also a great number of townspeople. The rise of the curtain found the orchestra seated upon the stage. It delighted the audience with two selections, both of which clearly showed the results of careful training and preparation. Morgan, '15, the leader, this season, has developed an unusually well balanced and unified orchestra which contains several individual stars of great brilliance. We venture to say that this orchestra would compare very favorably with that of any college in New England.

The Glee Club next appeared upon the scene and sang a southern lullaby, "Little Cotton Dolly," by Giebel, and for an encore another well-known lullaby, "Sweet Kentucky Babe."

The appearance of Lattin, '18, the

young New York violinist who has already made for himself an enviable reputation in this vicinity, was the signal for a storm of applause. He held the audience spell-bound with an exquisite rendering of Wieniawski's "Kujawiak" and played for an encore the old but recently revived and ever-popular melody, "A Perfect Day." In his second encore he produced a laugh with a unique and original skit which the composer had been saving for the occasion.

The Mandolin Club under the leadership of Gilbert, '15, is generally acclaimed as the smoothest aggregation of mandolin teasers assembled in recent years. Their second selection was a pleasing medley of popular "ragtime" airs arranged by Leader Gilbert.

Scott, '18, next appeared and gave an exceptionally good interpretation of Kipling's world-famous "Gunga Din." For an encore he read "The Legend of La St. Piere." Scott is an entertainer of considerable experience, he having served as reader on the Tufts Glee Club last season, and he was well received by his audience Friday night.

On their second appearance the song birds of the clubs sang Trotere's "A Night in Spain," Webb, '17, the club's best tenor; taking the solo parts. As an encore, Scott appeared with them, having a long scroll from which, with the aid of a yellow lead pencil of inordinate size, he read the following parodies on "Tipperary," (authorship unknown) which the glee club then sang:

"There's a course called European,
Where there is no Phi Beta Kap';
It is taught by a dignitary

By the name of _____"
The boys will flunk it, co-ords pass it,

And it surely makes us grunt;
It's not because—no!—because they know
it,
It's because they sit down front.

We are there right on the hour
And all ready to begin
But it takes time to fix the window
And some time to scratch his chin,
Put the books back and poke the fire
And put his white gloves on.
It's now high time to start the lecture
When the hour is half gone.

* * * * *

These dear Profs! they like to work us,
And they flunk us if they can;
Outside reading, writing speeches,
And the quizzes make us cram;
But there's one man we haven't men-
tioned,
To the boys he is quite fair.
Prexy's midyears are only cinches:
Jase Hagan's right there.

*Name omitted because it wouldn't
rhyme with Kap'.

After the orchestra had opened Part
Two of the program with two excellent
selections and Morgan, '15, and Shea, '17,
had played a duet on the trombone and
cornet, Murch, '15, furnished the most
humorous feature of the program in his
impersonation of members of the faculty.
He portrayed the most prominent char-
acteristics of several of the professors, all
in a friendly way, while the audience
roared. The impersonations were all
true to life although, of course, somewhat
overdrawn and delighted the students be-
yond measure. While all were well done,
Murch's impersonation of "Prex" was
perfect and certainly was the result of a
close study of human nature. This inno-
vation really made the program distinctive
and set it off in a class by itself.

Lattin received another storm of ap-
plause on his second appearance and first
played Massenet's "Meditations from
Thais." A ripple of delight floated over
the audience as, on his encore, he broke
into the familiar strain of the ever-popu-
lar "Humoreske" by Dvorak. As some
may remember, these were two of the se-

lections played by George Pratt at last
season's local concert and this fact may
have aroused some interest in comparing
the relative merits of the two men. Cer-
tainly both are finished artists upon the
violin.

The Mandolin Club then played Wag-
ner's famous march, "Under the Double
Eagle;" and then Lattin, Pratt and
Prince, on the violin, 'cello and piano,
played Chopin's "Nocturne" and Brahms'
Hungarian Dance No. 2, and as an encore,
"Sing Me to Sleep."

On his second appearance Scott read the
gruesome "Cremation of Sandy McGee"
and one or two other good selections but
his attempt to knock the professors by
original slams, did not meet with instan-
taneous success. The extent to which an
audience will enjoy knocks is limited.

As the last number on the program the
Glee Club sang "Here's to the Blue and
Gray" by Daggett, '03, "On to Victory"
and "Alma Mater," thus closing a rare
evening's entertainment.

JUNIOR CLASS PARTS.

At a meeting of the Junior Class held
after chapel, Thursday morning, the fol-
lowing officers were elected for the Class
Day exercises and for the Student Coun-
cil:

Oration, Francis L. Irvin; Historian,
Donald E. Putnam; Awarding of Prizes,
Cyril M. Joly; Presentation of Class Gift,
Waldo C. Lincoln; Marshall, Shirley
Blackington; Chaplain, Norman W. Lind-
say; Ode Committee, Leon Herring, Bur-
leigh Marston, and Waldo Lincoln; Exec-
utive Committee, James Campbell, Fred-
erick Sully, Burleigh Marston, Verne
Sanderson, Crawford Treat and Benj. F.
Greer and Norman Stevens; Student
Council, Irving R. Stanwood, Hubert H.
Barker.

"Father" Cole, '12, of Boston, spent
Sunday at the D. K. E. house.

ADVICE TO JOSEPPPO.

(In reply to "Joseppo's Dilemma" which appeared last week.)

You gotta two girl on da heart,
 An' lik' dem both for true?
 I'll try to tella wheecha one
 To tak' eef I was you.

Peppina's good for da look, you say,
 An' wear da dress so fin';
 She'll spenda da mon' you worka for—
 Think not of da hard time.
 Back from da long day in da shop
 You for da sup weel look
 An' fin' Peppina at da org'
 She lika not to cook.

Lucrecia is da one for you,
 She ees so strong lik' man,—
 Maybe she's not so good for look,
 But work, O how she can!
 She'll keepa your house all scrub fin'
 An' do da washin too;
 She'll baka da pie, she'll cooka da meat,
 Mak' da spaggett' for you.
 What eef her han's not soft one mite,
 Her own dress she cana mak',—
 She'll sava da mon' for you all right,
 So she's da girl to tak'.

MISS SMITH, '17, AND MISS GIBBS, '17.

FOOTBALL SCHEDULE FOR 1915.

Manager Hussey submits the following schedule as approved by faculty for 1915.

The schedule includes seven games only two of which are to be played at home. The Harvard game should cause a great deal of interest next fall. Last year Harvard played her opening game with Bates, defeating them by a score of 44-0, and this year are dropping them in favor of Colby. The return game with M. A. C. will be close, for M. A. C. will be on her own grounds; and, as will be remembered, was defeated by only six points this year at Portland. The team is taking on Norwich University for the first time, but it is not believed that they will prove very formidable. No comment need be made on the championship games, save that as two years ago, the Bowdoin game is the only one at Waterville. The Navy game, which was so much of a success this year,

makes a splendid finish to the schedule. One date is still open. The schedule:

September 25. Colby vs. Harvard, at Cambridge.

October 2. Open.

October 9. Colby vs. M. C. A., at Amherst

October 16. Colby vs. Norwich University, at Waterville.

October 25. Colby vs. Bowdoin, at Waterville.

October 30. Colby vs. Maine, at Orono.

November 6. Colby vs. Bates, at Lewiston.

November 13. Colby vs. Naval Academy, at Annapolis.

DUAL MEET WITH MAINE?

The track managers of Colby and the University of Maine are negotiating for a dual track meet to be held between the two colleges on Saturday, May 1. According to Manager Willard of Colby, there is a strong probability that the dual meet will be held, but the question as to whether it shall be staged at Waterville or at Orono is requiring a great deal of diplomacy. Regardless of where the meet shall take place, there promises to be some very interesting competitions. The sprints between Howe of Colby and Rice of Maine will deserve no small amount of interest, while Royal of Colby and French of Maine, in the hurdles, and Wenz and O'Brien of Colby and Pretti of Maine, in the long distance events, will be well worth watching. In addition to these features, Coach Cohn of Colby and Coach Adams of Maine will perhaps present a few surprises which they have been "holding up their sleeves." The proposed dual meet will serve as a good forerunner to the Maine Intercollegiate meet, as well as a special attraction for the supporters of the two colleges.

Hussey, '16, was in Augusta recently on business.

THE COLBY ECHO

Published Wednesdays During the College Year by the
Students of
COLBY COLLEGE

EDITORIAL BOARD

Editor-in-Chief - - - - Merle F. Hunt, '15

ASSOCIATE EDITORS

Vernelle W. Dyer, '15	Fred A. Pottle, '17
Albert J. O'Neill, '16	Burton B. Blaisdell, '16
Hubert H. Barker, '16	Claude A. LaBelle, '17
E. Donald Record, '17	Hugh S. Pratt, '17
Cyril M. Joly, '16	
Business Manager - - - -	Lester F. Weeks, '15
Assistant Manager - - - -	Scott D. Staples, '16
Mailing Clerk - - - -	Morrill L. Ilsley, '17

Exchanges and all communications relating to the Literary and News departments of the paper should be addressed to THE COLBY ECHO, Waterville, Maine.

All remittances by mail should be made payable to the Business Manager.

Subscriptions, \$1.00 per year, in advance
Single Copies, Five Cents

Entered at the Post Office at Waterville, Maine, as Second Class Mail Matter.

Press of Fairfield Publishing Company.

NOTICE.

ALL SUBSCRIPTIONS IN THE MEN'S DIVISION REMAINING UNPAID ON NEXT WEDNESDAY WILL BE DISCONTINUED AFTER THAT DATE.

Timely question for the I. P. A.: Does Prohibition prohibit?

The assembling of the new Student Council seems as usual to be a slow process. The three upper classes have all finally chosen their representatives and the president of the Freshmen is the only member from his class. It's high time to get together and do things if the Council is to accomplish anything this year.

So far as we have been able to learn, all the fraternities made the necessary appropriations toward the inter-fraternity track cup at their meetings last Wednesday night. The purchase of this cup, under the conditions stated in the last issue, is sure to arouse a wider interest in track athletics. Inter-fraternity rivalry in track is always a mighty force to aid the 'varsity team; it has done wonders at Maine and should prove useful here. Al-

ready at this early date a good sized squad is out for early training. Everybody out!

FIELDBRAVE CAN'T DO IT ALL.

The last match of the city-college chess tournament was played last Saturday night. The college club made the poorest showing of the series, taking only four games out of twelve. Fieldbrave again took all three games, Flood, substituting for Kelsey, took one, but Young and Williams lost all. Two games, postponed from the first match, remain to be played, but they can have little effect upon the result of the tournament, as the score now stands 26½ to 19½ in favor of the city team. Fieldbrave has won eleven games, and still has a postponed game to play, thus he has a clean slate to date.

DRUIDS HOLD THEIR INITIATION BANQUET.

The annual initiation banquet of the Druids, the honorary society of the men's division, was held, Monday evening, at the Chop House. William J. Pendergast, '15, served as toastmaster, and the speakers were Paul F. Fraser, '15; Leslie F. Murch, '15, and Raymond R. Thompson, '15. Impromptu remarks were given by Merle F. Hunt, '15; Norman W. Lindsay, '16; Frederick F. Sully, '16; Leo F. Irvin, '16; Waldo C. Lincoln, '16 and Ivan O. Harlow, '13.

DEKES OF MAINE AT PORTLAND.

On March 13th, the first State of Maine meeting of Delta Kappa Epsilon fraternity was held in the Congress Square Hotel, in Portland. About 135 men were present, which included both active and alumni members from Colby and Bowdoin chapters. John Clair Minot, Bowdoin, '96, acted as toastmaster, and he called upon the following speakers: Leslie C. Cornish, Colby, '75; Franklin C. Payson, Bowdoin, '76; James Anderson Hawes,

Yale, '94; Lennard A. Pierce, Bowdoin, '05; Rex W. Dodge, Colby, '06; Daniel W. Ashley, Colby, '15; and Fred W. Coxe, Bowdoin, '15. At this banquet a Maine D. K. E. alumni association was formed, Leslie C. Cornish, Colby, '75, being elected president. The association plans to make these reunions an annual affair. A very delightful menu was served during which songs were sung and cheers were given. Good fellowship reigned from the outset. The banquet broke up at eleven o'clock enabling those who wished to get home the same night might do so.

COLBY ALL STARS LOSE BY ELEVEN PINS.

The bowling match last Wednesday evening between the Waterville State league team and the Colby "All Stars" resulted in victory for Waterville, though the contest was one of the closest and hardest rolled at the alleys this winter. Waterville won the first string by five pins, the second by one and the final by five. Pooler with a single of 125 and a total of 316 was high man, though Murch gave him a good run with a total of 307. A large and enthusiastic crowd was out and both teams were well supported.

Monday evening the Zetes, champions of the college league lost three points to the Sentinel's champion of the city league.

CAMPUS CHAT.

Granville C. Shibles returned to college, Monday, after being at his home in Rockport for several weeks, owing to the illness of his mother.

Albert F. McMackin, '18, spent several days last week at his home in Everett, Mass., on account of illness.

Maine Alpha chapter of Phi Delta Theta Fraternity fittingly celebrated Founders' Day at the Chapter House, Monday evening. A number of the alumni members were present and added to the festivi-

ties of the occasion. Speeches were made by President Roberts, '92; Professor Ivan O. Harlow, '13; and Paul F. Fraser, '15. Light refreshments were served.

Randolph Tedford, '18, has just returned from his home in Brookline, Mass., where he went to undergo a surgical operation.

Harold Cobb, Wesleyan, '13, visited Bliss Marriner, '18, at the Commons Club, last week.

President Short and Mechanic Yeaton went to Vassalboro Friday afternoon where they purchased a Brush and drove the car home. Incidentally, neither had ever driven an automobile before, so let us rejoice in their safe arrival.

Recently the class in Sociology have made trips of inspection to the Poor Farm and the Fairfield Sanatorium.

Mr. A. E. Woods, an assistant secretary at the Railroad Y. M. C. A., was the speaker at the regular Y. M. C. A. meeting last evening.

John B. DeWitt, '12, was elected first selectman of the town of Bradford at the recent town meeting. He is now engaged in farming in that town.

Andrew Young, '13, now a member of the middle class at Newton Theological Seminary, visited friends on the campus, Saturday while on his way to his home in Sangerville.

Upton, '17, and Newton and Sussman, '18, will give a St. Patrick's day concert at Hartland, tonight.

V. W. Dyer, '15, attended the annual initiation banquet of the M. I. T. chapter of Alpha Tau Omega Friday as a delegate from the Colby chapter.

While at his home in Lawrence, Mass., last week, O'Brien, '16, won the mile run in the annual games of the Lawrence Military A. A. He is now the undisputed one-mile and two-mile out-door and indoor champion of his home city.

Twenty schools have already signified their intention of sending young orators

to the Lyfords which are to be held May 14.

Professor Brown delivered a lecture before a large crowd in the Opera House, Skowhegan, last evening.

Notices have been posted of late to the effect that freshmen and sophomores wishing to try out for assistant manager-ships of baseball or track should hand their names to the managers of these departments at once.

Thomas Grindall, '12, of Penobscot, spent three days at the Deke house, last week.

WOMEN'S DIVISION.

Edited by the News Department of the Colbiana.
1915—Dorothy Newman Webb.
1916—Vesta May McCurda.
1917—Marion Daggett.
1918—Isabelle Hervey Wing.
Manager—Hazel Dell Ross.

The Women's League held a very enjoyable Irish party at Foss Hall, Saturday evening, March 13th, and elected the first slate of officers in the history of the league. The program was especially appropriate. Irish Lilt, Marjorie Barker, '16, Carolyn Stevens, '16, Hazel Durgin, '17, Esther French, '16, (in costume); Cello Solo, "Kerry Dance, Marion Daggett, '17; Irish reading, Flora Norton, '17; Solo, "Marvourneen," Marjorie Barker, '16. Punch and crackers were served, and dancing enjoyed. The voting resulted in the following elections: President, Vivian Skinner, '16; vice-president, Mildred Greene, '17; secretary, Dorothy Roberts, '18; treasurer, Ella Robinson, '16; executive committee: Head of sports, Katherine Moses, '16; president of musical clubs, Marjorie Barker, '16; editor-in-chief Colbiana, Alice Mather, '16; chairman house council, Effie Harmon, '16; social committee: Dorothy Webb, '15, Iris, Crosby, '16, Isabelle Wing, '18. The evening closed as usual with the singing of Alma Mater, and a general acclamation of a good time.

Dr. Wolfe gave a most instructive and interesting talk on Associated Charities at the Y. W. C. A. meeting Tuesday night.

Miss Alberta Shepherd and Miss Alta Davis of Mary Low Hall have been entertaining Miss Clare Linscott of Dixmone and Miss Velma Pitcher of Corinna.

Mrs. E. E. Robinson recently visited her daughter, Ruby Robinson at Mary Low Hall.

Miss Vinia Sturtevant is the guest of her sister, Katharine, at Foss Hall.

Miss Margaret Wilkins is recovering from the mumps.

Edith Pratt, '16, president Y. W. C. A., has selected the following cabinet members for the ensuing year: Religious meetings committee, Marjorie Barker, '16; Missionary, Katharine Moses, '16; Bible Study, Ella Robinson, '16; Social, Iris Crosby, '16; Silver Bay, Vivian Skinner, '16; Association News, Esther French, '16; Social Service, Winifred Shaw, '17; music, Marion Daggett, '17.

Rehearsals for the operetta "The Japanese Girl" to be given April 29 by the glee club are progressing splendidly under the direction of Miss Mildred Stockbridge.

Flora Norton, '16, read in Vassalboro, March 10.

Helen Hanson and Dorothy Webb, '15, were speakers at the Oakland High Street Mission, Sunday.

At a recent Junior class meeting the nominating committee for Class Day was chosen as follows: Edith Pratt, Esther French, Louise McCurdy, Vesta McCurda.

The Freshman class will give a Y. W. C. A. sociable at Foss Hall next Saturday evening. YOU are invited.

H If you need a reliable Watch, Clock or article of Silverware or Jewelry, something up to date, but at a reasonable price, call at

HARRIMAN'S

Wear Good Shoes
The Elite Shoe
means quality for you

Sold by
J. F. EVERETT, Commons Club

J. D. NEAL

Photographer

93 MAIN STREET, WATERVILLE

Clothing **Footwear**
 "Collegian Clothes" "Crossett Shoes"

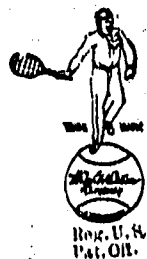
Siguere's
 MAIN & SILVER

WATERVILLE, MAINE

N. E. Tel. 217-W. Farm and City Tel. 1-11-10

WRIGHT & DITSON

ATHLETIC GOODS
ARE MADE ON HONOR



Every article is the best that experience and skill can determine for each sport and pastime. It is impossible to make better or more up-to-date goods than those bearing the Wright & Ditson Trade-Mark.

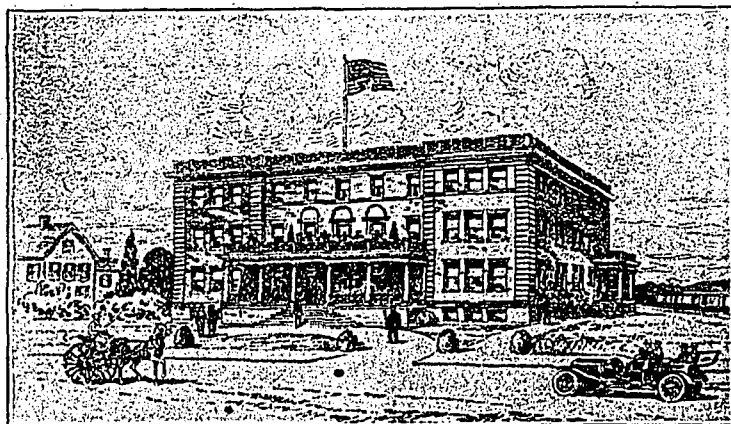
Complete Equipment for
 Lawn Tennis, Base Ball, Golf,
 Cricket, Track and Field Sports

WRIGHT & DITSON

344 Washington St., Boston Harvard Square, Cambridge
 891 Main St., Worcester 82 Weybosset St., Providence
 New York Chicago San Francisco

Write for Catalogue. It's Free

RAILROAD Y. M. C. A.



Membership Open to Colby Students

Privileges:—Bowling, 5c a string. Pool, 15c an hour.

Restaurant:—Lunches at all hours, except from 10 to 11 a. m.

Globe Steam Laundry

COLBY SUPPLY STORE

J. M. Richardson

Zete House

LAWRY BROS. CO.

Complete House Furnishers

FAIRFIELD, MAINE

- ¶ Get our prices on furnishings.
- ¶ Everything needed for the room or den.
- ¶ Open evenings except Tuesday and Thursday.

Look Who's Here Dr. Knowlton is the **EASY MARK**, for honest and truly **PAINLESS DENTISTRY** and reasonable charges.
FAIRFIELD, over P. O.

HAYDEN CANDY CO.

CATERERS AND WHOLESALERS

Ice Cream and Confectionery
 Homemade Candles including Assorted
 Chocolates, our specialty

122 Main Street,

Waterville, Maine

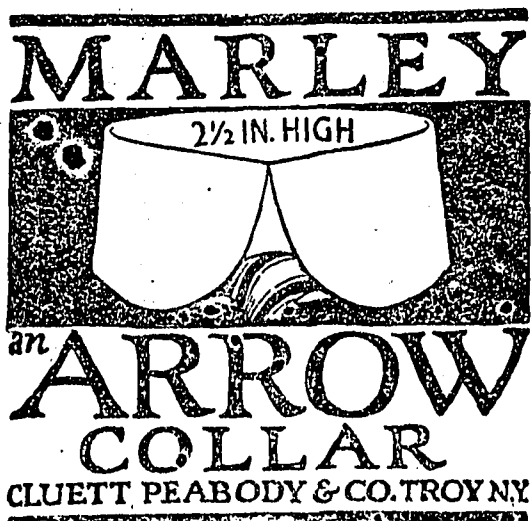
E. S. DUNN & COMPANY

Merchant Tailors

6 Silver Street, - Waterville, Maine

CLEANING AND PRESSING.

TELEPHONE 26



The Fisk Teachers' Agencies

2A Park Street, Boston, Mass.

28 E. Jackson Boulevard, Chicago, Ill.

317 Masonic Temple, Denver, Col.

514 Journal Building, Portland, Ore.

2161 Shattuck Avenue, Berkeley, Cal.

343 Douglas Building, Los Angeles, Cal.

156 Fifth Avenue, New York, N. Y.

1847 U Street, Washington, D. C.

Send to any of the above addresses for
Agency Manual, free.

The Medico-Chirurgical College of Philadelphia

DEPARTMENT OF MEDICINE

Located in America's Medical Center. A School which offers Peculiar Advantages for
Completing a Course under the Standards of the American Medical Association.

Completion of standard four-year high school course, or its equivalent, plus one year of work of college grade in Physics, Chemistry, Biology and one modern language required for entrance. All credentials must be approved by Pennsylvania State Examiner under specifications of State laws.

A Pre-Medical Course in Physics, Chemistry, Biology and German is given, complying with the Pennsylvania State and American Medical Association requirements.

The Course in Medicine comprises four graded sessions of eight months each. Among the special features are Individual Laboratory and Practical work in well equipped Laboratories, Hospital and Dispensary, Free Quizzes, Ward Classes limited in size, yet mat Clinical Conferences, Modified and Modern Seminar Methods. Abundant clinical material is supplied by the College Hospital, Philadelphia General Hospital (1600 beds) and the Municipal Hospital for Contagious Diseases.

Also a Department of Dentistry and a Department of Pharmacy and Chemistry. For announcements and information,
Address SENECA EGBERT, M. D., Dean, 17th and Cherry Streets, Philadelphia, Pa.

COLBY FACULTY, STUDENTS AND FRIENDS

You are invited to inspect the

Magnificent Display of Up to Date Merchandise

Comprising all the New and Snappy Styles in Ready-to-wear Garments, Furs, Millinery, Hosiery, Underwear, Gloves, Dress Goods, Silks, Trimmings, Neckwear, Leather Goods and Staple Dry Goods at the

L. H. SOPER DEPARTMENT DRY GOODS STORE

54-56 MAIN ST., WATERVILLE, MAINE

SHOES

For College Men and Women

THE GALLERT SHOE STORE

OH U

COLD WEATHER DRINKS & GOODIES

HAGER'S For Me

133 MAIN STREET

Medical School of Maine

BOWDOIN COLLEGE

Addison S. Thayer, Dean, 10 Deering St.
Portland, Maine

Penobscot Exchange

MOON & CRATTY, Proprietors

BANGOR, - MAINE

COLLEGE PRINTING

Done as college men and women want it.

Programs, Cards, Faaternity and Athletic Printing, Dance Orders and Calling Cards.

Papers, cards and folders from the best makers.
Drop in and make us a call.

CITY JOB PRINT

Basement, Savings Bank Building, Waterville, Me,
FRED D. MCALARY. FRANCIS M. JOSEPH, Colby '01

L. P. LOUD CO.

SHOES

52 MAIN STREET

Students' Headquarters
for Custom-Made Clothes



Large line of novelty wools, clothes
specially designed for young men.
Repairing and pressing department.

L. R. BROWN

CASH MERCHANT TAILOR

95 MAIN STREET

Triconic National Bank

GEO. K. BOUTELLE, President
H. D. BATES, Cashier

TRANSACTS A GENERAL BANKING BUSINESS

Pays 4 per cent. interest in Savings Department.

Open Saturday evenings, 7 to 9.

STREET SHOES

EVENING SLIPPERS

HOLMES SHOE STORE

CORNER MAIN AND TEMPLE STREETS

OUTING SHOES

TENNIS SHOES

How It Used To Be

In the early day of railroading, there was a card in the depot at Waterville which read as follows: "The Locomotive will leave every morning at 10 o'clock, provided the weather is fair."

There used to be just as much uncertainty about ready-made clothing. If all the conditions were right, it fitted fairly well.

Nowadays

The Empire State Express, the Parcel Post and

HART SCHAFFNER & MARX

ready-to-wear clothes are typical of the progress that has been made in three of the most important of the world's industries. HART SCHAFFNER & MARX, SUITS AND OVERCOATS in every style for the College Man at \$18 to \$25, others in smart styles and exceptional cloth values at \$12, \$15 and \$16.50. YOUR SIZE IS HERE.

J. E. JACKSON CO.

WATERVILLE'S *LIVE* STORE. The Home of Hart Schaffner & Marx Clothes

The Headquarters For

SEA FOODS

Also choice Meats, Poultry, and Vegetables.

Is At

MCCALLUM'S

136 Main Street

Phone 450

T. A. GILMAN

OPTOMETRIST AND OPTICIAN

Broken lenses replaced

92 Main Street

WATERVILLE, MAINE

TAILOR ED.

At 50 Main Street up the stairs
Tailor Ed makes and repairs.

Horace Purinton Co.

Contractors and Builders

Manufacturers of Brick

Estimates furnished on application.

Head office at Waterville, Maine

COPLEY SQUARE HOTEL

HUNTINGTON AVENUE, EXETER AND BLAGDEN STREETS

BOSTON, MASS.

Headquarters for professional, college, and athletic teams when in Boston.

360 Rooms

200 Private Baths

AMOS H. WHIPPLE, Proprietor.

THE NEWTON THEOLOGICAL INSTITUTION

(FOUNDED 1825)

Eight miles from Boston (Mass.) State House situated in superb grounds of 52 acres belonging to the institution.

An Eminent Faculty, Fourteen Professors and Instructors, Convenient Dormitories and Lecture Rooms, Beautiful Chapel, a Noble Library an Unsurpassed Library Building, and Equipment for Laboratory Work.

Courses leading to B. D. degree, and special provision for Postgraduate students.

The proximity of the Seminary to Boston and Cambridge makes it easy for students to attend lectures by eminent specialists and the Lowell Institute Courses.

There are many opportunities for engaging in missionary and philanthropic work by which students acquire clinical experience and contribute to their self-support.

Address **GEORGE E. HERR**, President, NEWTON CENTRE, MASS.

Everything Electrical

to make your room
Cozy and Homelike

Study Lamps of all kinds

Central Maine Power Co.

Boothby & Bartlett Co.

GENERAL INSURANCE

176 Main Street

WATERVILLE, MAINE.

REDINGTON & COMPANY

HOUSE FURNISHERS

FURNITURE, CARPETS, CROCKERY,

Mirrors, Mattresses, Feathers, Etc.

We Re-upholster Old Furniture and Repolish Frames.

SILVER STREET,

WATERVILLE, ME.

H. L. KELLEY & CO.

COLBY MEMORABILIAS,
PENNANTS AND SEALS.
Agents for the CONKLIN,
MOORE AND WATERMAN
FOUNTAIN PENS, BOOKS
AND STATIONERY. PIC-
TURE FRAMING A SPECIAL-
TY.

130 Main St.,

Waterville, Maine

THE ELMWOOD HOTEL

Run by
College Men
for
College
Men

Dr. Gordon B. Hatfield

DENTIST

GOLD WORK A SPECIALTY

Savings Bank Bldg., 173 Main St., Waterville, Maine
Telephone Connection

The College Printers

Fairfield Publishing Company

Fairfield, Maine

HAVE YOU SEEN OUR SPRING CAPS?

If not, call and inspect them

The H. R. Dunham Company

FOR SALE and TO LET! College Caps and Gowns, Full Dress Suits.

Coburn Classical Institute Waterville, Maine

Coburn has been attended by more than six thousand students. More than twelve hundred have prepared for college. Thorough courses are maintained. The faculty is composed of well trained and efficient teachers. Coburn is well located and well equipped. Splendid opportunities for athletics under skilled directors. Expenses moderate. Eighty-sixth year began, September 8, 1914.

For information address the Principal

DREW T. HARTHORN.

J. H. DeORSAY Druggist

(Successor to Wm. C. Hawker & Co.)

70 Main Street WATERVILLE, MAINE

Agency For

MARIE SAUNDERS', WHITMAN'S, FOSS
CHOCOLATES

KODAK
SUPPLIES

ROCHESTER THEOLOGICAL SEMINARY ROCHESTER, N. Y.

FACULTY--Of fifteen Professors and Instructors (including five in the German Depart.)

NINE DEPARTMENTS--Old Testament, New Testament, English Bible and Biblical Languages, Church History, Systematic Theology, Christian Ethics (including Sociology), and Pastoral Theology, Homiletics, History and Philosophy of Religion and Missions (including Religious Education), Elocution. Courses partly elective. Series of Special Lectures throughout the year by eminent men.

EQUIPMENT--New and completely furnished dormitory with gymnasium, music room, and parlor for social gatherings; Library enlarged and improved; Attractive reading room; Commodious chapel and class rooms.

ROCHESTER--A growing and prosperous city of 250,000. Many varieties of religious and philanthropic work. Strong churches with able preachers. Noted for its Sunday Schools. Unusual opportunities for observation and practical experience. Privileges of the University of Rochester.

Address all requests for catalogues, correspondence regarding administration, etc., to

J. W. A. STEWART, Dean.