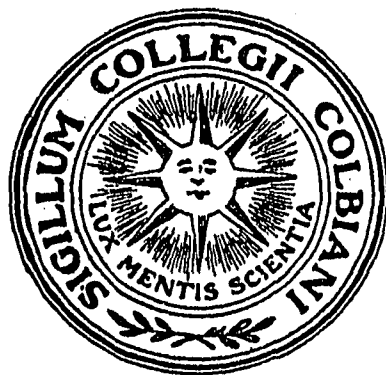


The Colby Echo

Vol. XVIII

Waterville, Me., December 16, 1914

No. 11



PUBLISHED WEDNESDAYS DURING THE COLLEGE YEAR BY
THE STUDENTS OF COLBY COLLEGE

COLBY GIRLS:

WILL FIND OUR STORE TO BE THE PLACE TO
BUY COATS, SUITS, WAISTS, GLOVES, CORSETS,
UNDERWEAR AND HOSIERY.

WARDWELL DRY GOODS COMPANY

76 MAIN STREET, WATERVILLE, MAINE

AUGUSTA HOUSE

WILBUR T. EMERSON, Manager

AUGUSTA, MAINE

Special Attention Given to Banquets

CUT FLOWERS

MITCHELL & CO.

FLORISTS

144 Main Street

Waterville, Maine

Saddle and Carriage Horses TO LET

W. H. POLLARD

Phone 273-M

12 CHARLES ST.

S. A. & A. B. GREEN

COAL

OTTO COKE, HARD AND SOFT WOOD
AND KINDLINGS

Waterville, Maine.

TELEPHONE, 30

OFFICE, 251 MAIN STREET

Day & Smiley Co.

Contractors and Builders

Jobbing Promptly Attended to.

Shops Opposite the City Hall. Front Street.

COME TO

Dunbar's Drug Store

FOR YOUR DRUG STORE WANTS

118 Main Street

Waterville, Me.

DR. C. F. KIDDER

DENTIST

Telephone 323-J

60 Main Street

Waterville, Maine

EMERY-BROWN COMPANY

DEPARTMENT STORE

The Quality of Our Merchandise

is the kind which appeals to discriminating people, and while our
standard of quality is high our prices are very moderate.

WATERVILLE,

MAINE

COLBY COLLEGE

WATERVILLE, MAINE

Courses leading to the degrees of A. B. and S. B.

For Catalogue, Address

A. J. ROBERTS, President

Waterville, Maine.

S. L. PREBLE

66 Main Street, Waterville, Me.

College

Photographer

G. S. FLOOD & CO.

Shippers and dealers in all kinds of

**Anthracite and
Bituminous Coal.**

Also Wood, Lime, Cement, Hair, Brick,
and Drain Pipe.

Coal Yards and Office, Corner Main and Pleasant Streets

Down Town Office, S. E. WHITCOMB CO.

Up Town Office, E. L. GOVE.

Winslow Office, E. W. ALLEN.

Plains Office, ARTHUR DARVIAU, 83 Water St.

THE COLLEGE SUPPLY STORE

JOHN M. RICHARDSON, '10

ARTHUR M. RILEY, '10

Text Books

Fountain Pens

Banners

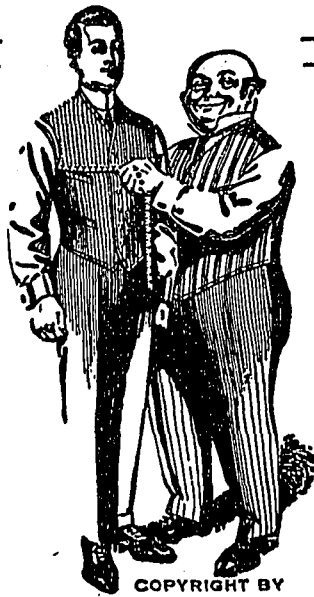
Scrap Books

Stationery



A GENERAL COLLEGE SUPPLY

Who's Your Tailor?
TRADE MARK REGISTERED 1906



COPYRIGHT BY
ED. V. PRICE & CO.

Snappy
Tailored-
to-Order

Clothes
for College
Chaps

You college students--always to the fore in the ranks of correct dressers--have you seen the new styles and woolens from our Chicago tailors

Ed. V. Price & Co.

If not, be sure to stop in after classes today and let us show them to you. "Prices within your allowance."

The HEALD-ERVIN CO.

Exclusive Local Dealer

THE COLBY ECHO.

Volume XVIII, No. 11.

WATERVILLE, MAINE, DECEMBER 16, 1914.

Price Five Cents.

"BEN" HOUSER TO COACH BASEBALL NEXT SPRING.

It has been officially announced by the athletic council that Mr. Benjamin Houser, of Litchfield, Maine, has been engaged to coach the Colby baseball team next spring. Mr. Houser is a graduate of the Stephen Girard College of Philadelphia and is a man of wide experience in the great national game. He was with the Boston Red Sox for a year and a half, and two seasons with the Philadelphia Athletics, former champions of the baseball world. Last year, he played with the Buffalo Federal league team. His position is first base. He was known as a heavy hitter and a clean fielder, until he was forced to retire from active playing on account of an injury to his hand. Last spring, he was assistant coach of baseball at the University of Pennsylvania. He will report to take up his work, April 21.

BIG EVENT AT THE GYM FRIDAY NIGHT.

An interfraternity tug of war will be the feature event of a novel entertainment at the Gym. Friday evening. Coach Cohn and the committee in charge have also arranged for wrestling and boxing matches and drills by the gym classes. It is expected that every fellow in college will be on hand to join in the singing, and to hear the college orchestra and mandolin club in action. Incidentally, graduate manager Ervin has generously contributed two barrels of MacIntosh Reds for the occasion. In short, a general good time is anticipated.

Burton E. Small, '18, has returned to college.



I. R. STANWOOD.
Captain 1915 Football

FIRST CUT IN GLEE CLUB SQUAD.

The first cut in the squad of forty or more men who have been trying out for places on the glee club was made Monday. The following men survived the weeding-out process: Nye, Webb, Totman, Tarbox, Cook, Marston, Adams, Tedford, Arey, Newton, Shea, Robinson, '15, Campbell, E.

P. Smith, Drummond, Stowell, Pikowski, Putnam, Tracy, H. S. Pratt, Scribner, Hastings, Carroll, Newman, Bramhall, Robinson, '18, Weston, and Lincoln. Coach Daggett and Leader Weston will pick the requisite number of men sometime during the last of the week. Manager Bramhall has a trip in contemplation to begin Monday, December 28. One or two more concerts are needed to make the itinerary complete. The following towns will be visited: Guilford, Mars Hill, Fort Fairfield, Houlton, Millinocket, Milo, and, probably, Corinna, Caribou, and Presque Isle. As a result of the trials held Friday, Harold Scott, '17, will be the reader. Mr. Scott was formerly reader of the Tufts glee club, and will undoubtedly prove to be a clever entertainer. The mandolin club and the orchestra under the direction of Gilbert and Morgan are rapidly rounding into shape, and the result will be as well balanced an aggregation as has represented Colby for many years.

PHI DELTA THETA BANQUET.

The entire body of the chapter of Maine Alpha of Phi Delta Theta Fraternity, together with a good number of alumni members, gathered around the festive board at The Elmwood, Wednesday evening, on the occasion of the thirtieth annual initiation banquet. Dr. John G. Towne, '05, served as toastmaster, and the following post-prandial program was given:

Music

Welcome.....Harold A. Small, '15
 Response.....Herbert M. Rockwell, '16
 Our Alumni.....Charles P. Chipman, '06
 The College First.....
President A. J. Roberts, '90
 Friendship.....Paul F. Fraser, '15
 Impromptu speeches by alumni and initiates.

The initiates:

1916—Herbert Muir Rockwell.
 1917—Charles Wallace Lawrence, Granville Carleton Shibles.
 1918—Warren Stanley Churchill, Frank Joseph Howard, George E. Ingersoll, Al-

bert Francis McMackin, Harry Martin O'Neill, Ellsworth Prince, Paul Allison Thompson, John Ware.

Committee in charge—R. B. Hutchins, '15, B. F. Greer, '16, and C. S. Richardson, '17.

"GINGER" FRASER PRESIDENT OF COLBY PROHIBITION LEAGUE.

The inter-collegiate prohibition society held its first meeting of the year in the Chapel, last Wednesday afternoon. At this meeting officers were elected and business plans discussed. The membership is growing daily, and it is hoped that by the end of this term the roll will exceed that of last year.

Some member will be chosen who will be sent to Kansas City, the last of this month, to represent Colby at the Students' National Convention. Everyone who is in the least interested in this work is urged to become a member and to lend his assistance to further so worthy a cause.

The following officers were chosen: President, Paul F. Fraser, '15; vice-president, Hugh S. Pratt, '17; secretary, Robert C. Joudry, '16; treasurer, Merle F. Hunt, '15; executive committee: Harry Upton, '17; Norman Lindsey, '16; Carroll Flanders, '17.

ALPHA TAU OMEGA.

The Gamma Alpha chapter of Alpha Tau Omega held its twenty-third annual initiation banquet at the New Augusta House, December 11, 1914. After a sumptuous banquet, the following toasts were responded to:

Toastmaster.....Chester R. Mills, '15
 Choragus....Raymond R. Thompson, '15
 The Greeks.....Crawford A. Treat, '16
 Why is a Freshman? Vernon G. Smith, '18
 The Graduate Tau.....
A. Harvey Knight, '14
 Activities at Gamma Alpha.....
John N. Harriman, '16
 The Spirit of Alpha Tau.....
Carroll B. Flanders, '17
 Alpha Tau Omega, Its Significance.....
Harold S. Campbell, '15

The following chapters of the province were represented:

Beta Upsilon (U. of M.) by E. A. Clifford.

Gamma Sigma (Worcester Polytech) by T. A. Farnsworth, Colby, ex-'15.

Beta Gamma (M. I. T.) H. S. Beierl.

Professor Leroy J. Cook, Gamma Beta (Tufts), of the faculty, was present and took part in the program. The committee in charge of the banquet was composed of D. Webster Tozier, '17, William M. Harri- man, '17, and L. Lewis Levine, '16.

The initiates:

1915—John Ralph LaFleur.

1917—Carroll Benjamin Flanders, Matthew Alfonsus Golden.

1918—Errol Cleveland Chase, George Edwin Ferrill, Warren Marcy Goodspeed, Ralph Raymond Howes, Vernon Guy Smith, Michael Martin Tetelman.

Pledges—Fred Rufus Harriman, '18, Leonard Knight Thomas, '18.

DEUTSCHE VEREIN ORGANIZED.

The members of the third and fourth year German classes met at Foss Hall, Monday evening, to form a Deutsche Verein. Dr. Marquardt and Prof. Crow- ell were present, and a large representa- tion from both the men's and the women's divisions. The following officers were elected:

President, Robert Williams, '15; execu- tive committee, Alice Mather, '16, Ruth Morgan and Ina McCausland, '15.

Plans were discussed for an evening's entertainment to be held sometime during the winter, the proceeds to go to the relief of foreign suffering.

INTER-FRATERNITY BOWLING LEAGUE.

Standing up to Tuesday night:

	Won	Lost	Pc.
D. K. E.....	7	1	.875
D. U.	3	1	.750
Z. P.	4	4	.500
C. C.	2½	5½	.454
A. T. O.	2½	5½	.454
P. D. T.....	1	3	.250

The Inter-fraternity Bowling League is now well under way. Five matches have been rolled so far, while two more will be rolled this afternoon after the ECHO has gone to press. Delta Kappa Epsilon now leads the league with seven points won and only one lost, having taken all four points in a match with the Commons Club on Monday.

RECORDS.

Single string—tie between James and Allen, 116.

Three strings, James, 305.

Team single, Delta Upsilon, 508.

Team total, Delta Upsilon, 1497.

To date James has far and away the best individual record, with 101; while Willard and Allen are close behind, with 99 and 98, respectively. Other good av- erages are Flanders, 92; Murch and Roy- al, 91; Leseur, 90; King and Ramsdell, 89; Grant and Whittemore, 88; Campbell, Higgins, W. Harriman, 87; Crossman, Brown, Holt, 86; Shea, 85.

Next games:

December 15. Delta Upsilon vs. Phi Delta Theta.

December 16. Commons Club vs. Zeta Psi.

December 17. Delta Kappa Epsilon vs. Alpha Tau Omega.

December 18. Delta Upsilon vs. Com- mons Club.

January 6. Phi Delta Theta vs. Alpha Tau Omega.

January 7. Zeta Psi vs. Delta Kappa Epsilon.

January 8. Phi Delta Theta vs. Com- mons Club.

ALPHA PHI ALPHA.

The annual banquet of the Alpha Phi Alpha sorority was held on the evening of December 11, at the Royal.

Toasts:

Toastmistress	Marguerite Chamberlain, '15
Choragus	Ernestine Porter, '17
Alpha Phi Alpha Ideals.....	Jennie Farnum, '15
Looking Back.....	Louise Clark, '12
The Future	Hazel N. Lane, '16
The Gray and the Blue.....	Nellie L. Lightbody
The Day is Here.....	Aldine C. Gilman, '15
Impromptu.	Initiate, Hazel Barney, '18.

THE COLBY ECHO

Published Wednesdays During the College Year by the
Students of
COLBY COLLEGE

EDITORIAL BOARD

Editor-in-Chief	- - - - -	Merle F. Hunt, '15
ASSOCIATE EDITORS		
Vernelle W. Dyer, '15		Fred A. Pottle, '17
Albert J. O'Neill, '16		Burton B. Blaisdell, '16
Hubert H. Barker, '16		A. Raymond Rogers, '17
E. Donald Record, '17		John F. Everett, '17
Cyril M. Joly, '16		Claude A. LaBelle, '17
Donald E. Putnam, '16		Hugh S. Pratt, '17
Business Manager	- - - - -	Lester F. Weeks, '15
Assistant Manager	- - - - -	Scott D. Staples, '16
Mailing Clerk	- - - - -	Morrill L. Ilsley, '17

Exchanges and all communications relating to the Literary and News departments of the paper should be addressed to THE COLBY ECHO, Waterville, Maine.
All remittances by mail should be made payable to the Business Manager.

Subscriptions, \$1.00 per year, in advance
Single Copies, Five Cents

Entered at the Post Office at Waterville, Maine, as Second Class Mail Matter.

Press of Fairfield Publishing Company.

Professor Crowell's account of his experiences in Europe will be continued in our next issue.

The entire college extend sympathy to Hubert H. Barker, '16, and Miss Marjorie Barker, '16, in the death of their father.

In consequence of the fact that the faculty saw fit to grant the petition recently presented by the student body, we are happy to announce that the Christmas vacation will begin at high noon on Saturday of this week and end at 8 o'clock Tuesday morning, January fifth. As this is positively our last appearance before the holidays, we leave with you our heartiest wishes for a joyful Christmas and a Merry New Year.

A movement is now on foot, with a prominent senior as the instigator, toward making a Christmas gift from the fraternities of several magazines to the college library. The belief is prevalent that most of the magazines of the sort that now occupy the library rack, do not interest the average student. The addition of several

up-to-date and semi-popular publications would doubtless be attractive to many readers who now seldom or never enter the library. Five or six periodicals of such a nature could be secured at club rates and at only a nominal expense to each fraternity. This movement deserves the hearty coöperation of the students.

DR. ASHCRAFT'S A. A. REPORT FOR 1913-14.

To the Council of the Colby Athletic Association:

Gentlemen:

Inasmuch as the Constitution of the Association provides for a committee to audit the Treasurer's books, it seems unnecessary to publish a detailed report. I, therefore, give the income and expenditures by departments for the year July 1, 1913, to July 1, 1914.

Respectfully submitted,

T. B. ASHCRAFT, *Treasurer.*

	Income	Expense
Football	\$1,954.05	\$2,368.63
Baseball	1,058.54	1,220.41
Track	297.87	2,554.91*
Finance	1,430.96	1,193.79
Tennis		42.73
Dramatics	269.52	220.89!
Women's Division		69.83
Dues	2,664.80	
Cash on hand		4.55
	\$7,675.74	\$7,675.74

*Includes salary of the Coach.

!Some unpaid bills, not included.

RESOLUTIONS.

HALL OF CHI OF ZETA PSI.

Inasmuch as it has pleased God in His infinite wisdom to remove from this life the father of our beloved brother, Hubert H. Barker, be it

Resolved, That we extend to our loved brother an expression of our heartfelt sympathy; and be it further

Resolved, That a copy of these resolutions be sent to our brother; that a copy

be spread upon the Chapter records; that a copy be printed in the Colby ECHO.

For the Chapter,

RALPH H. WESTON.
ROBERT H. WILLIAMS.
WILBUR J. BLADES.

December 15, 1914.

RESOLUTIONS.

WHEREAS, It has pleased God in His infinite wisdom to take from us the father of our classmate, Marion L. Barker; therefore be it

Resolved, That we, the class of 1916, extend our most heartfelt sympathy to our classmate; and be it further

Resolved, That a copy of these resolutions be sent to our classmate; and that a copy be printed in the Colby ECHO.

ESTHER FRENCH.
CLARA HINCKLEY.
KATHERINE SINGER.

Committee on Resolutions.

RESOLUTIONS.

HALL OF BETA CHAPTER OF CHI OMEGA.

WHEREAS, It has been the will of Almighty God to take unto Himself the father of our beloved sister, Marjorie Barker; be it

Resolved, That we, Beta chapter of Chi Omega, express our loving sympathy to our sister; and be it further

Resolved, That a copy of these resolutions be sent to our sister and to the Colby ECHO, and be spread on the records of this chapter.

DOROTHY N. WEBB
BERLE CRAM.
ALICE MATHER.
Committee on Resolutions.

ALUMNI NOTES.

John W. Coombs, '06, recently received his unconditional release from the Philadelphia athletics—the team which he

pitched to the championship of the world in the fall of 1910.

Jeremiah P. Burke, '90, has been appointed by Governor Walsh to the Board of Education of the State of Massachusetts.

"Along Came Ruth" is the title of a play by Holman F. Day, '87, which has scored a tremendous hit, the past season, at the Plymouth theatre, Boston.

William A. Cowing, '04, has resigned his position of principal of Winthrop High and has accepted a position as submaster of Chelsea (Mass.) High school.

Chas. G. ("Pooch") Reed, '13, has been purchased by the St. Louis Americans, from the Manchester Club of the N. E. League, with whom he played in the outfield the past summer.

FOOTBALL FATALITIES IN 1914.

Considering the fact that millions of youths in the United States play the strenuous game of football every fall, it speaks well for the sport that there were only twelve deaths on the country's gridiron this season. None of these players was over twenty. Tackling caused four deaths; heart failure and blood poisoning were responsible for two more; two died from blows on head; three succumbed in scrimmage, and one died after a head-on collision.—*Hotchkiss Record*.

CAMPUS CHAT.

George Gould, '06, of Portland, visited the Deke house last week.

Professor Libby led the regular Y. M. C. A. meeting last evening.

Vernelle Dyer, '15, preached at the Friends' church at East Vassalboro, Sunday.

Bryan H. Doble of M. C. I., was a guest of Crawford Treat, at the A. T. O. house, Saturday.

A notice posted on the bulletin board intimates that the old "Cercle Francais,"

which flourished here some three or four years ago, is to be reorganized.

Daily debates are now being held in the chapel by the members of the Debating society.

Daniel Ashley, '15, was in Ellsworth, Saturday rehearsing for a play that he is soon to take part in.

Fred Dunn, '15, was forced to leave for his home last Sunday because of blood poison in his foot. He lives in Needham, Mass.

Last Saturday night the Dekes held a very enjoyable card and dancing party in their chapter house. About a dozen couples were present.

"Tommy" Farnsworth, Colby, ex-'15, was a visitor at the A. T. O. house, Friday afternoon and Saturday morning.

Chester Mills, '15, will be the delegate of the Gamma Alpha (Colby) chapter to the 24th Biennial Congress of Alpha Tau Omega, to be held next week at Vanderbilt College, Nashville, Tenn.

Johi Currie, '14, principal of Norridge-wock High school, spent Friday night at the Commons Club, on his way back to his position.

Dr. Harry W. Laidler, Wesleyan, '07, made his headquarters at the Commons Club while at Colby. Dr. Laidler addressed Prof. Wolf's classes in economics and sociology on "Socialism and its various aspects."

Prof. Obear is endeavoring to start a Physical Society among the students in the Physics department.

President Roberts was guest of honor, Saturday evening, at the annual banquet of the Chicago Alumni Association, in Chicago. Details of the event will be printed in the next issue of the ECHO.

DELTA DELTA DELTA BANQUET.

The seventh annual banquet of Alpha Upsilon chapter of Delta Delta Delta was held Saturday evening, December 12, at Hotel Elmwood.

Toasts:

Toastmistress Mary Washburn, '15
 Choragus Mildred Barton, ex-'17
 Welcome, Thrice Welcome
 Marion Steward, '15
 The Pearl Phoebe Vincent, '17
 President's Message Eva Reynolds, '12
 "Initiation's Very Bad"
 Helen Kimball, '18
 The Pine Mildred Greene, '17
 Present Policies Marian Brown, '12
 Delta Life Effie Hannan, '16
 The Pansy Emily Cunningham, '15
 Our Nine Flora Norton, '17
 Impromptu

Among those present besides the active chapter were: Marian Brown, '12, Jennie Reed, '12, Eva Reynolds, '12, Louise Springfield, ex-'11, Ethel McEwen, ex-'14, Dorothy Tubbs, '14, Edith Washburn, '14, Esther Gilman, ex-'16, and Mildred Barton, ex-'17.

A special feature which was much enjoyed was a violin solo by Ethel McEwen, ex-'14.

Initiates: Iris Carle Crosby, '16, Anne Mabel Caswell, Eunice Eliza Chase, Alice Louise Dyer, Helen May Kimball, Lenna Huldah Prescott, Zadie Inez Reynolds, Zella Amanda Reynolds, Bertha Lane Terry, and Mollie Emma Treat, '18.

WOMEN'S DIVISION.

Edited by the News Department of the Colbiana.
 1915—Dorothy Newman Webb.
 1916—Vesta May McCurda.
 1917—Marion Daggatt.
 1918—Isabelle Hervey Wing.
 Manager—Hazel Dell Ross.

The concert given Tuesday night, under the auspices of the Senior class was very much enjoyed. Miss Smith pleased her audience in her selection of songs and in her interpretation of them.

Miss Hastings spent the week end at her home in Auburn.

Miss Martha Steward of Skowhegan is the guest of her sister, Marion Steward, '15, at Foss Hall.

Vivienne Wright, '16, and Ina McCausland, '15, spoke before the Y. W. C. A. of Augusta, Tuesday evening.

SHOES

For College Men and Women

THE GALLERT SHOE STORE

OH U

COLD WEATHER DRINKS & GOODIES

HAGER'S For Me

133 MAIN STREET

Medical School of Maine

BOWDOIN COLLEGE

Addison S. Thayer, Dean, 10 Deering St.
Portland, Maine

Penobscot Exchange

MOON & CRATTY, Proprietors

BANGOR, - MAINE

COLLEGE PRINTING

Done as college men and women want it.

Programs, Cards, Faaternity and Athletic Printing,
Dance Orders and Calling Cards.

Papers, cards and folders from the best makers.
Drop in and make us a call.

CITY JOB PRINT

Basement, Savings Bank Building, Waterville, Me,
FRED D. McALARY. FRANCIS M. JOSEPH, Colby '01

L. P. LOUD CO.

SHOES

52 MAIN STREET

Students' Headquarters for Custom-Made Clothes



Large line of novelty wools, clothes
specially designed for young men.
Repairing and pressing department.

L. R. BROWN

CASH MERCHANT TAILOR

95 MAIN STREET

JOHN N. WEBBER, Pres. J. F. PERCIVAL, Cashier

The Peoples National Bank

ACCOUNTS SOLICITED

STREET SHOES

EVENING SLIPPERS

HOLMES SHOE STORE

CORNER MAIN AND TEMPLE STREETS

OUTING SHOES

TENNIS SHOES

How It Used To Be

In the early day of railroading, there was a card in the depot at Waterville which read as follows: "The Locomotive will leave every morning at 10 o'clock, provided the weather is fair."

There used to be just as much uncertainty about ready-made clothing. If all the conditions were right, it fitted fairly well.

Nowadays

The Empire State Express, the Parcel Post and

HART SCHAFFNER & MARX

ready-to-wear clothes are typical of the progress that has been made in three of the most important of the world's industries. HART SCHAFFNER & MARX SUITS AND OVERCOATS in every style for the College Man at \$18 to \$25, others in smart styles and exceptional cloth values at \$12, \$15 and \$16.50. YOUR SIZE IS HERE.

J. E. JACKSON CO.

WATERVILLE'S LIVE STORE. The Home of Hart Schaffner & Marx Clothes

The Headquarters For

SEA FOODS

Also choice Meats, Poultry, and Vegetables.

Is At

McCALLUM'S

136 Main Street

Phone. 450.

TAILOR ED.

At 50 Main Street up the stairs
Tailor Ed makes and repairs.

T. A. GILMAN

OPTOMETRIST AND OPTICIAN

Broken lenses replaced

92 Main Street

WATERVILLE, MAINE

Horace Purinton Co.

Contractors and Builders

Manufacturers of Brick

Estimates furnished on application.

Head office at Waterville, Maine

COPLEY SQUARE HOTEL

HUNTINGTON AVENUE, EXETER AND BLAGDEN STREETS

BOSTON, MASS.

Headquarters for professional, college, and athletic teams when in Boston.

360 Rooms

200 Private Baths

AMOS H. WHIPPLE, Proprietor.

COLBY FACULTY, STUDENTS AND FRIENDS

You are invited to inspect the

Magnificent Display of Up to Date Merchandise

Comprising all the New and Snappy Styles in Ready-to-wear Garments, Furs, Millinery, Hosiery, Underwear, Gloves, Dress Goods, Silks, Trimmings, Neckwear, Leather Goods and Staple Dry Goods at the

L. H. SOPER DEPARTMENT DRY GOODS STORE

54-56 MAIN ST., WATERVILLE, MAINE

Everything Electrical

to make your room
Cozy and Homelike

Study Lamps of all kinds

Central Maine Power Co.

Boothby & Bartlett Co.

GENERAL INSURANCE

176 Main Street WATERVILLE, MAINE.

REDINGTON & COMPANY

HOUSE FURNISHERS
FURNITURE, CARPETS, CROCKERY,
Mirrors, Mattresses, Feathers, Etc.

We Re-upholster Old Furniture and Repolish Frames.
SILVER STREET, WATERVILLE, ME.

H. L. KELLEY & CO.

COLBY MEMORABILIAS,
PENNANTS AND SEALS.
Agents for the CONKLIN,
MOORE AND WATERMAN
FOUNTAIN PENS, BOOKS
AND STATIONERY. PIC-
TURE FRAMING A SPECIAL-
TY.

130 Main St.,

Waterville, Maine

THE ELMWOOD HOTEL

*Run by
College Men
for
College
Men*

Dr. Gordon B. Hatfield

DENTIST

GOLD WORK A SPECIALTY

Savings Bank Bldg., 173 Main St., Waterville, Maine
Telephone Connection

The College Printers

Fairfield Publishing Company

Fairfield, Maine

REMEMBER

The H. R. Dunham Company

Has Everything For

CHRISTMAS

*Suits, Furnishings, Hats, Caps
and Jewelery.*

Coburn Classical Institute

Waterville, Maine

Coburn has been attended by more than six thousand students. More than twelve hundred have prepared for college. Thorough courses are maintained. The faculty is composed of well trained and efficient teachers. Coburn is well located and well equipped. Splendid opportunities for athletics under skilled directors. Expenses moderate. Eighty-sixth year began, September 8, 1914.

For information address the Principal

DREW T. HARTHORN.

**J. H. DeORSAY
Druggist**

(Successor to Wm. C. Hawker & Co.)

70 Main Street WATERVILLE, MAINE

Agency For

MARIE SAUNDERS', WHITMAN'S, FOSS
CHOCOLATES

KODAK
SUPPLIES

ROCHESTER THEOLOGICAL SEMINARY

ROCHESTER, N. Y.

FACTULTY--Of fifteen Professors and Instructors (including five in the German Depart.)

NINE DEPARTMENTS--Old Testament, New Testament, English Bible and Biblical Languages, Church History, Systematic Theology, Christian Ethics (including Sociology), and Pastoral Theology, Homiletics, History and Philosophy of Religion and Missions (including Religious Education), Elocution. Courses partly elective. Series of Special Lectures throughout the year by eminent men.

EQUIPMENT--New and completely furnished dormitory with gymnasium, music room, and parlor for social gatherings; Library enlarged and improved; Attractive reading room; Commodious chapel and class rooms.

ROCHESTER--A growing and prosperous city of 250,000. Many varieties of religious and philanthropic work. Strong churches with able preachers. Noted for its Sunday Schools. Unusual opportunities for observation and practical experience. Privileges of the University of Rochester.

Address all requests for catalogues, correspondence regarding administration, etc., to

J. W. A. STEWART, Dean.