

LIBRARY

WATERVILLE, ME.

The Colby Echo

Volume XVI

Waterville, Maine, January 22, 1913

Number 14



Published Wednesdays during the College Year by the Students of
Colby College.

EVERYTHING IN
Ladies Hosiery and Underwear
AT OUR STORE
AGENTS FOR EVERWEAR HOSIERY CO.
6 Pairs Guaranteed to wear 6 months, for Men and Women
WARDWELL DRY GOODS COMPANY
76 MAIN ST., WATERVILLE MAINE

Hager's

Confectionery and Ice Cream.

113 Main Street.

"We welcome you back and also to our store."

S. E. WHITECOMB CO.

Dealers in

GROCERIES, MEATS, FISH, PROVISIONS

FRUIT AND CANNED GOODS

Telephone 261

81 MAIN STREET

WRIGHT & DITSON

HEADQUARTERS FOR

Athletic Supplies

Base Ball
Lawn Tennis
Golf
Basket Ball
Track and
Field Sports
Foot Ball
Hockey

College Students
and Athletes who
want the real, supe-
rior articles for the
various sports
should insist upon
those bearing the
Wright & Ditson
Trade Mark.



Catalogue Free

WRIGHT & DITSON

344 Washington Street
BOSTON, MASS.

NEW YORK CHICAGO
SAN FRANCISCO
PROVIDENCE CAMBRIDGE

WATERVILLE STEAMLAUNDRY

145 MAIN STREET

JOHN WELLS, D. U. Ho. E. B. FARRAR, D. K. E. Ho.

Agents for Colby

Sidney A. Green

Andrew B. Green

S. A. & A. B. GREEN

COAL

HARD AND SOFT WOOD, AND KINDLINGS

Waterville, Maine.

TELEPHONE, 30

OFFICE, 251 MAIN STREET

CUT FLOWERS

MITCHELL & CO.

FLORISTS

144 Main Street,

Waterville, Me

The Gerald
FAIRFIELD, ME

F. H. HOAR, Manager

First class in all its appointments. Bath and
Telephone in every room. Special
attention given to

**BANQUETS and PRIVATE DINNER
PARTIES**

WE : STRIVE : FOR : QUALITY NOT CHEAPNESS

We have many kinds of goods needed by students and they are all marked with reliability.

EMERY-BROWN COMPANY

DEPARTMENT STORE

COLBY MEMORABILIAS
COLBY PENNANTS
COLBY SEALS
BOOKS, STATIONERY
and FINE ART GOODS

H. L. KELLEY & COMPANY

1180 Main Street
Waterville, Maine

S. L. PREBLE

66 Main Street, Waterville, Me.

College
Photographer

THE COLLEGE SUPPLY STORE



Text Books

Fountain Pens

Banners

Scrap Books

Stationery



A GENERAL COLLEGE SUPPLY

Send Your Subscriptions for the ECHO at Once---\$1.00.



COPYRIGHT BY
ED. V. PRICE & CO.

Who Makes Your Clothes?

Ask this question of the majority of Men in College and they will say HEALD-ERVIN CO. Why? Because they guarantee a fit and complete satisfaction or your money back.

WE ARE SOLE AGENTS FOR THE FAMOUS

F. V. Price & Co.

Call and let us show the Fall and Winter Samples.

108 MAIN ST. **HEALD-ERVIN CO.** WATERVILLE, MAINE

The Newton Theological Institution.

(Founded 1825)

Eight miles from the Boston (Mass.) State House, situated in superb grounds of 52 acres belonging to the institution.

An eminent Faculty, Convenient Dormitories and Lecture Rooms, Beautiful Chapel, a Noble Library, an Unsurpassed Library Building and Equipments for Laboratory Work.

Courses leading to B. D. degree, and special provision for post-graduate students.

More than one hundred Newton men have served as foreign missionaries. Special courses are offered on missionary history and methods.

The proximity of the seminary to Boston and Cambridge makes it easy for students to attend lectures by eminent specialists and the Lowell Institute courses.

There are many opportunities for engaging in missionary and philanthropic work by which students acquire clinical experience and contribute to their self-support.

Address

GEORGE E. HORR, President
NEWTON, CENTRE, MASS.

THE COLBY ECHO.

Volume XVI, No. 14.

WATERVILLE, MAINE, JANUARY 22, 1913.

Price Five Cents.

CONTENTS.

Bowling League	1
Debate	1
Musical Clubs Give First Concert.....	2
Musical Clubs	2
Address by President Roberts.....	2
Coburn Club	3
The Colby Bauble	3
Chess Tournament	3
Y. M. C. A.....	3
Junior Class.....	3
Editorials	4
Phi Delta Theta.....	4
They Say	4
Alumni Notes	5
Campus Chat	5
Women's Division.....	5
Directory	5

BOWLING LEAGUE.

The second game of the second round of the Bowling League was played last Thursday afternoon, between teams representing Delta Upsilon and Alpha Tau Omega. The former won by a score of 36 pins.

DELTA UPSILON.

Allen	86	81	74— 241
Hamilton	73	74	81— 228
Pratt	72	78	99— 249
Keppel	75	74	84— 243
Dunham	86	97	91— 274
—	—	—	—
	392	404	429—1225

ALPHA TAU OMEGA.

Clukey	84	75	67— 226
Warren	86	77	76— 239
Stanwood	76	74	77— 227
Wise	94	90	94— 278
Miller	62	76	81— 219
—	—	—	—
	402	392	395—1189

Zeta Psi defeated Phi Delta Theta, Saturday afternoon, by a score of 1184 to 1138. The summary:

ZETA PSI.

H. Ricker.....	84	78	113— 275
T. Ramsdell	80	95	89— 285
C. Ricker	80	72	76— 248
B. Owen.....	65	88	70— 223
B. Carroll	88	99	97— 276
—	—	—	—
	397	429	445—1184

PHI DELTA THETA.

Blackington	80	57	79— 236
Whitney	89	83	100— 262
Hutchins	76	78	76— 230
Jones	79	62	84— 267
Hunt	75	75	75— 226
—	—	—	—
	399	325	414—1138

Standing of the teams:

	Won	Lost	P.C.
Delta Upsilon.....	5	0	1.000
Zeta Psi.....	4	1	.800
Delta Kappa Epsilon.....	3	2	.600
Phi Delta Theta.....	1	4	.200
Alpha Tau Omega.....	0	5	.000

DEBATE.

On Friday evening, January 17, one of the most interesting of the preliminary debates was held in the chapel. The question under discussion was: "Resolved, that the British Government is justified in protesting against the Panama Canal Act and its enforcement, in so far as it relieves from the payment of tolls American ships engaged in the American coastwise trade, on the ground that it violates British rights under the Hay-Pauncefote Treaty concerning the Panama Canal."

The speakers were as follows: Affirmative: George W. Perry, '14, Paul Christopher, '15, Earle M. Woodward, '15; Negative: Andrew Young, '13, James H. Phair, '14, Roger A. Putnam, '15. The question was ably discussed by both sides and many interesting facts in connection with the subject were brought out. Charles Atchley, Esq., acting as spokesman for the judges, announced that the negative had won by a close margin.

MUSICAL CLUBS GIVE FIRST CONCERT.

The musical clubs made their initial appearance for the season, last Friday evening, in the Lawrence High School, at Fairfield. The audience, which was large, manifested its appreciation by repeated encores. The performance, as a whole, showed good training and a smooth rendering of all the numbers. The orchestra played with dash and spirit; the glee club showed great skill in rendering the difficult piece, "Beauteous Night" by Affenbach; and the mandolin club gave promise of being one of the best that has represented Colby for some time.

Mr. Loane in his first appearance, as reader, took the audience by storm; while Messrs. Gilbert, guitar, Lincoln, banjo, Carpenter and Jones, mandolins, gave an impromptu comedy sketch which was the hit of the evening. The next concert will be given in Oakland, under the auspices of the Christian Endeavor Society of the Baptist church, January 31st.

MUSICAL CLUBS.

GLEE CLUB.

F. Harold Jones, Leader.

FIRST TENORS—S. F. Brann, '14, E. H. Hussey, '13, F. H. Jones, '14, W. B. Marston, '16, H. G. McKay, '16.

SECOND TENORS—P. A. Drummond, '15, F. G. Arey, '15, C. O. Wylie, '16, F. S. Carpenter, '14, N. E. Robinson, '15, R. E. Johnson, '14.

FIRST BASSES—R. I. Haskell, '14, C. J. Keppel, '13, E. L. Wyman, '14, R. E. Owen, '14, D. H. White, '13.

SECOND BASSES—I. L. Cleveland, '13, E. A. Carpenter, '15, L. A. Keyes, '13, E. P. Smith, '16, H. P. Fuller, '14, R. A. Bramhall, '15.

MANDOLIN CLUB.

H. S. Cushman, Leader.

FIRST MANDOLINS—E. C. Marriner, '13, E. L. Wyman, '14, P. G. Curtis, '16, H. P. Fuller, '14.

SECOND MANDOLINS—E. P. Smith, '16, F. G. Arey, '15, J. A. Campbell, '16, N. E. Robinson, '15, W. C. Lincoln, '16.

BANJO-MANDOLINS—H. S. Cushman, '13, E. A. Carpenter, '15.

MANDOLA—P. A. Drummond, '15.

ORCHESTRA.

R. K. Greely, Leader.

FIRST VIOLINS—G. W. Pratt, '14, D. H. White, '13.

SECOND VIOLINS—W. C. Lincoln, '16, R. L. Hurd, '16.

VIOLA—R. E. Johnson, '14.

TROMBONE—M. E. Morgan, '15.

CORNET—R. I. Haskell, '14.

CLARINET—R. K. Greely, '13.

'CELLO—R. J. Doyle, '16.

ACCOMPANISTS—H. C. Morse, '14, R. K. Greely, '13, W. B. Marston, '16.

QUARTET.

I. L. Cleveland, Leader.

F. H. Jones, C. O. Wylie, H. P. Fuller, I. L. Cleveland.

ADDRESS BY PRESIDENT ROBERTS.

The first of a series of public meetings which are to be held each Sunday afternoon, at the City Opera House, took place last Sunday. The subject of these meetings is, "Turn to the Right," and the purpose of them is evident from the title.

The principal feature of the exercises was the address which was delivered by President Roberts before an audience that filled the entire auditorium to overflowing. For his theme, President Roberts chose, "Increasing Human Efficiency;" and he showed how any person with the ability to read can make himself vastly more efficient and important in daily life, simply by means of the advantages which

the public enjoys today, namely, libraries, free schools, and lectures. While only a small per cent of those who enter the primary schools ever reach the high school or the college, yet the young man or the young woman who has the ambition to become a vital factor in the affairs of life can get an excellent education out of the public library alone. To prove this, he told of instances in which men who were unable to obtain more than the rudiments of grammar school work had won for themselves marked distinction by their determination to master the knowledge which the library afforded, so far as opportunity would permit. Knowledge is the chief requisite of success in the present day, and the will to acquire that knowledge is the most potent power that can be called upon to effect the greatest increase of human efficiency.

COBURN CLUB.

President Roberts called a meeting of all Coburn graduates, after chapel, last Thursday. Plans were discussed for reviving and reorganizing the Coburn Club. Saturday morning, after chapel, another meeting was held and the following officers were elected:

President, Donald H. White, '13; vice-president, Robert E. Owen, '14; secretary and treasurer, Aaron L. MacGhee, '13; executive committee: Royden, K. Greely, '13; Robert H. Bowen, '14; and Harold C. Morse, '14.

THE COLBY BAUBLE.

Trials for the Dramatic club were held last Wednesday afternoon, and the following men have been chosen for the cast of characters:

Mr. Augustus Billings, F. Harold Dubor, '14; Mrs. Augustus Billings, R. H. Williams, '15; Mrs. Upton Batterson, R. W. Gilmore, '15; Mr. Francis Faddish, William J. Larkin, '16; Leonora Faddish, R. H. Gilmore, '16; Henry Mackintosh,

D. W. Ashley, '15; Joseph Johnson, Esq., F. G. Davis, '13; Mons. Leon Dothis, H. A. Small, '15; Frederick, Purser, L. W. Grant, '15; Steward's Boy, Sellery Looton, C. M. Joly, '16; Messenger, L. E. Warren, '14.

CHESS TOURNAMENT.

The chess tournament is making rapid strides and is becoming more interesting.

The standing of the players is as follows:

Young, '15.....	16½
Foster, '13.....	15
Rand, '15.....	7
Pratt, '14.....	4
Eaton, '15.....	4
Campbell, '15.....	2½
Wheeler, '14.....	2
Williams, '15.....	2

Y. M. C. A.

The deputation work under the auspices of the Y. M. C. A. has been very successful during the past few months. Last Sunday two teams were sent out to Vassalboro and Oakland, respectively, and came back with very encouraging reports. It is expected that greater stress will be laid upon this work after the semester examinations.

JUNIOR CLASS.

The Junior class held a meeting on Saturday afternoon, at which the following committee for the Junior promenade was elected: Everett L. Wyman, Frank S. Carpenter, Don J. Whitney, William B. Tracey, Milroy Warren, and William B. Dexter. The question about Junior Class Day officers was discussed and a committee was appointed to draw up a slate, consisting of: William Mooers, Earle H. Davis, John P. Flanigan, Ray I. Haskell, Robert H. Bowen, and Frank T. Gillingham.

THE COLBY ECHO

Published Wednesdays During the College Year by the
Students of
COLBY COLLEGE

EDITORIAL BOARD

Editor-in-Chief - - - - - Andrew Young, '13

ASSOCIATE EDITORS

John Wells, '13	Nathaniel E. Robinson, '15
Everett S. Kelson, '14	Vernelle W. Dyer, '15
Robert E. Owen, '14	Merle F. Hunt, '15
Earle H. Davis, '14	Leslie F. Murch, '15
George W. Pratt, '14	George H. G. Campbell, '15

Business Manager - - - - -	Harvey W. Mayo, '14
Assistant Manager - - - - -	Robert H. Bowen, '14
Mailing Clerk - - - - -	Lester F. Weeks, '15

Exchanges and all communications relating to the Literary and News departments of the paper should be addressed to THE COLBY ECHO, Waterville, Maine.

All remittances by mail should be made payable to the Business Manager.

Subscriptions, \$1.00 per year, in advance
Single Copies, Five Cents

Entered at the Post Office at Waterville, Maine, as Second Class Mail Matter.

Press of Fairfield Publishing Company.

It was reported in last Saturday's Boston Globe that Colby had refused to run against Bates in the B. A. A. games. Both graduate-manager Ervin and coach Adams deny emphatically that Colby has refused to run against Bates. "I wrote Manager Brown," said graduate-manager Ervin, "that we did not wish to run in a triangular meet with the other Maine colleges. Beyond that I said nothing that would even intimate that we did not care to run against Bates. The report must have been misconstrued by some one, to the effect that we had objections to running against the Lewiston men, but such is not the case."

College loyalty is a very elastic term and a very fruitful subject for debaters, public speakers, and enthusiasts. It is a never failing spring from which editors of student publications can draw inspiration for new material, when the regular college news gives out. It is the constant slogan of the loyal class enthusiast, when all his

ardent schemes fall through because of the disinterestedness of his fellows.

College loyalty is not simply a matter of attending all mass meetings, or cheering at football games, or following up the fads. It works its way into class-room honesty, and into sympathetic relations with all activities. It concerns itself with all the revered college associations and the old traditions.

Such is college loyalty in a general sense. More specifically, it has reference to our college. Within the past few years, a new spirit and a new loyalty have been born. That their vigor may not be diminished during the winter months when there is so little opportunity for public outbursts of enthusiasm, is the purpose of these suggestions. There must always be a gulf between the fall and the spring sports. In the meantime, "Colby Stories" and old "Oracles" should be read to find out college traditions, and to see what Colby men did in the old days.

PHI DELTA THETA.

Last Saturday evening, the members of Phi Delta Theta with invited guests enjoyed a pleasant trip to East Vassalboro. On their arrival at the Grange hall, a hot oyster supper was served, after which the fraternity orchestra furnished music for an informal dance.

THEY SAY

That Colby must run Bates at the B. A. A.

That the college physician is being kept busy with patients.

That the Sunday school classes need a revival.

That the low hangers should begin to plug.

That the meeting in the Opera House, last Sunday afternoon, was well attended by college men.

That the Musical Club concert was a great success.

That "gym" classes are proving a physical benefit.

ALUMNI NOTES.

William O. Stevens, '99, has recently issued a book entitled, "Pewee Clinton Plebe."

William S. Stevens, '06, lecturer on Business Organization and Insurance at Columbia University, is the author of the book, "Industrial Combinations and Trusts."

Woodman Bradbury, '87, has composed the music to Dr. George Matheson's "Concordia."

CAMPUS CHAT.

Rev. Nathan Hunt, '79, of Charleston, visited his son, M. F. Hunt, '15, at the Delta Upsilon House, Monday.

Earl Eames, '15, and Harold Dunham, '15, are ill with colds.

Frank T. Gillingham, '14, led the Y. M. C. A. meeting, Tuesday evening.

Dr. J. W. Black left, Saturday, for a short business trip to Baltimore.

Theodore Fieldbrave, a native of Allahabad, India, who has been studying at Newton Theological Seminary, has entered college and is taking a special course.

Messrs. Greely, Pratt, and Morgan assisted in Guilford, at the dedication ball in the new town hall, on Thursday evening, last.

William E. Barton, a graduate of M. C. I., who has been studying at Coburn, has entered the Freshman class.

Raymond P. Luce, ex-'14, was a visitor at the Deke House, over Sunday.

George O. Dudley, '13, is confined to his bed with a severe attack of la grippe.

Dr. I. B. Mower, State Secretary of the Maine Baptist Convention, addressed the Ministerial Association, Monday evening.

The bowling alleys in the Railroad Y. M. C. A. are closed on account of repairs.

The Delta Upsilon fraternity held a social dance at the Club House, last Saturday evening.

Bert Wise, '16, is confined to his room with a severe cold.

H. B. Green, ex-'13, is visiting friends on the campus this week.

The regular Athletic Council meeting was postponed until next Monday evening.

WOMEN'S DIVISION.

MARY PHYLLIS ST. CLAIR, Editor.
 MARIAN E. INGALLS, Business Manager.

Lena Blanchard, ex-'14, spent Saturday and Sunday at Foss Hall.

Professor Brown led the regular Y. W. C. A. meeting Tuesday evening. It is needless to say that his talk was very helpful and interesting.

The Y. W. C. A. held a tea Wednesday afternoon at Foss Hall.

Miss Frances Bartlett and Miss Rideout, both of Bates, have been at Foss Hall during the past week. They were the guests of Genevieve Barker, '15.

Miss Harriet Cole, state corresponding secretary of the Christian Endeavor, was at Foss Hall, Monday.

The hockey field, flooded and frozen over, makes a splendid skating rink, and is much enjoyed by the girls.

The Freshman Y. W. C. A. social, postponed from last week, is to be held next Saturday evening at Foss Hall. All are cordially invited.

Dora Libbey, '13, spent Sunday at her home in Winthrop.

Clara Collins, '14, spent Sunday in Clinton.

DIRECTORY.

Echo—Editor, Andrew Young, '13; manager, Harvey W. Mayo, '14.

Oracle—Editor, Irvin L. Cleveland, '13; manager, Milroy Warren, '14.

Music—President, Donald H. White, '13;

manager, Lester A. Keyes, '13; leader of Glee Club, Harold F. Jones, '14; leader of Mandolin Club, Henry S. Cushman, '13; leader of Orchestra, Royden K. Greely, '13; leader of the Band, Royden K. Greely, '13.

Athletics—President, John Wells, '13; captain of football, Paul F. Fraser, '15; manager of football, Earle H. Davis, '14; captain of baseball, Charles G. Reed, '13; manager of baseball, William B. Carroll, '13; captain of track, Robert H. Bowen, '14; manager of track, Seth F. H. Howes, '14; captain of tennis, Harold C. Morse, '14; manager of tennis, Andrew Young, '13.

Y. M. C. A.—President, Lester A. Keyes, '13; secretary, Frank T. Gillingham, '14.

Dramatics—President, Frederick Davis, '13; manager, Harold Dubor, '14.

JOHN N. WEBBER, Pres. J. F. PERCIVAL, Cashier

The Peoples National Bank

ACCOUNTS SOLICITED

MISS EDITH M. LEAVITT

PUBLIC STENOGRAPHER

Over Kelley's Book Store

Tel. 53 W

Fidelity Building,

Portland, Me.

"Le Maine Francais"

Is neither PARISIAN, CANADIAN, nor AMERICAN FRENCH

but

FRENCH

Read it

Why You Should Insure

IN

The Provident Life and Trust Company

It is surrounded by greater safeguards than any other life insurance company, and gives greater guarantees for the future.

Its charter provides for the continuance of the present wise and conservative management.

It will, under all circumstances, deal fairly with you.

Its practice is to grant an extension of time if the insured is unable to pay premiums when due.

Its policies are non-forfeitable after the payment of BUT TWO annual premiums.

Its investments are secure, its management economical, and its premium rates are low.

Its rate of mortality from organization is below all other American companies and its dividends from this source correspondingly larger.

Write for full information to

FREEMAN M. GRANT,

General Agent for Maine,

COPLEY SQUARE HOTEL

HUNTINGTON AVENUE, EXETER AND BLAGDEN STREETS

BOSTON, MASS.

Headquarters for professional, college, and athletic teams when in Boston.

360 Rooms

200 Private Baths

AMOS H. WHIPPLE, Proprietor.

THE ROYAL CAFE



ROBINSON & DAVISON, Proprietors.

Write Ideas for Moving Picture Plays !

YOU CAN WRITE PHOTO PLAYS AND
EARN \$25. OR MORE WEEKLY

WE WILL SHOW YOU HOW !

If you have ideas—if you can *think*—we will show you the secrets of this fascinating new profession. Positively no experience or literary excellence necessary. No “flowery language” is wanted.

The demand for photoplays is practically unlimited. The big film manufacturers are “moving heaven and earth” in their attempt to get enough good plots to supply the ever increasing demand. They are offering \$100. and more, for single scenarios, or written ideas.

We have received many letters from the film manufacturers, such as VITAGRAPH, EDISON, ESSANAY, LUBIN, SOLAX, IMP, REX, RELIANCE, CHAMPION, COMET, MELIES, ETC., urging us to send photoplays to them. We want more writers and we’ll gladly teach you the secrets of success.

We are selling photoplays written by people who “never before wrote a line for publication.”

Perhaps we can do the same for you. If you can think of only one good idea every week, and will write it out as directed by us, and it sells for only \$25. a low figure,

YOU WILL EARN \$100 MONTHLY FOR SPARE TIME WORK.

FREE SEND YOUR NAME AND ADDRESS AT ONCE FOR FREE COPY OF
OUR ILLUSTRATED BOOK, “MOVING PICTURE PLAYWRITING.”

Don't hesitate. Don't argue. Write *now* and learn just what this new profession may mean for you and your future.

**NATIONAL AUTHORS'
INSTITUTE**

**R-662-1543 Broadway
NEW YORK CITY**

COLBY FACULTY, STUDENTS AND FRIENDS

You are invited to inspect the

Magnificent Display of Fall and Winter Merchandise

Comprising all the New and Snappy Styles in Ready-to-wear Garments, Furs, Millinery, Hosiery, Underwear, Gloves, Dress Goods, Silks, Trimmings, Neckwear, Leather Goods and Staple Dry Goods at the

L. H. SOPER DEPARTMENT DRY GOODS STORE

54-56 MAIN ST., WATERVILLE, MAINE

G. S. FLOOD & CO.

Shippers and dealers in all kinds of

**Anthracite and
Bituminous Coal.**

Also Wood, Lime, Cement, Hair, Brick,
and Drain Pipe.

Coal Yards and Office, Corner Main and Pleasant Streets

Down Town Office, S. E. WHITCOMB CO.

Up Town Office, E. L. GOVE.

Winslow Office, E. W. ALLEN.

Plains Office, ARTHUR DARVIAU, 83 Water St.

THE ELMWOOD HOTEL

*Run by
College Men
for
College
Men*

W. C. HAWKER & CO.

Druggists

Agency For

**Kodak
Supplies**

MARIE SAUNDERS'
WHITMAN'S
FOSS'

Chocolates

The New Augusta House

WILBUR T. EMERSON, Manager

AUGUSTA, MAINE

Special Attention Given to Banquets

Students' Headquarters for Custom-Made Clothes



Large line of novelty woolens, clothes
specially designed for young men.

Repairing and Pressing Department.



L. R. BROWN

CASH MERCHANT TAILOR

95 Main Street

Waterville Typewriter Exchange

89 Main St., Waterville, Me.

All kinds of TYPEWRITERS to sell and to rent.
High Grade Supplies

Next door below W. & F. Ry. Waiting Room.

W. A. JUDGE
MAKES FINE PHOTO VIEWS
FILMS DEVELOPED AND PRINTED
IN THE BEST STYLE

THE DeGRUCHY COMPANY

THE CORNER STORE

WATERVILLE, MAINE

Newness, Merit, Economy are all in evidence in the fine collection of Autumn and Winter Merchandise we are showing a display that is worth your fullest consideration.

New apparel of every sort for Young Men and Women, the smartest production that point the way to this store for the latest styles in the fashionable world.

AGENTS FOR THE HART SCHAFFNER AND MARX CLOTHES FOR MEN
MILLINERY AND GARMENTS IN THE MOST ADVANCED STYLES

The DeGRUCHY COMPANY,

Waterville, Maine

F. A. HARRIMAN

JEWELER

52 Main Street, Waterville, Maine

Globe Steam Laundry

P. W. HUSSEY, Agent

A. T. O. House

Kennison & Newell

Painters and Paper-Hangers

Paper Hangings, Room Mouldings,
Paints, Oils, Varnishes and Glass.
Tel. 366 76 Temple Street

Dr. Gordon B. Hatfield

DENTIST

GOLD WORK A SPECIALTY

Savings Bank Bldg., 173 Main St., Waterville, Maine
Telephone Connection

Ticonic National Bank

GEO. K. BOUTELLE, President

N. D. BATES, Cashier

TRANSACTS A GENERAL BANKING BUSINESS

Pays 4 per cent. interest in Savings Department.

Open Saturday evenings, 7 to 9.

TAILOR ED.

Makes **SNAPPY, STYLISH SUITS**

REPAIRING NEATLY DONE

Two-piece Suits from \$12.00 to \$35.00

Telephone 345-1

Opposite Electric Waiting Room 88 Main St.
The Sanitary Place

BRETON & LAVERDIERE

BARBERS AND HAIRDRESSERS

The Home for Anticorn. The Magic Safety
Corn Shaver. The little Razor that ends the
aching corn.

REDINGTON & COMPANY

HOUSE FURNISHERS

FURNITURE, CARPETS, CROCKERY,

Mirrors, Mattresses, Feathers, Etc.

We Re-upholster Old Furniture and Repolish Frames.
SILVER STREET, WATERVILLE, ME.

The Headquarters For

SEA FOODS

Also choice Meats, Poultry, and Vegetables.

Is At

MCCALLUM'S

136 Main Street

Phone 450

Coburn Classical Institute

Waterville, Maine

*The Eighty-fifth year will begin
September 10, 1913.*

*For catalog and other information,
address,*

Drew J. Harthorn, A. M.,

Principal.

QUERY? ? ? ?

AND THEN SOME? ?

Should a DENTIST be a College man?

F. A. KNOWLTON D.D.S., (Doctor of Dental Surgery)

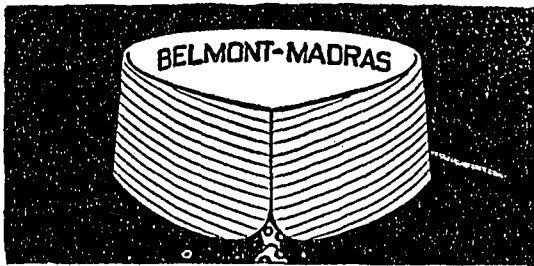
Tufts Dental College '88, Boston

On deck at **FAIRFIELD** ever since—Over Post Office—24 yrs. 'Nuff said.

Waterville Steam Dye House

Dyeing, Cleaning, Pressing, Repairing

12 MAIN STREET.



The popular "Belmont" notch Collar
made in self striped Madras. 2 for 25c

ARROW COLLARS

Cluett, Peabody & Co., Makers

ELECTRIC SUPPLIES

OF ALL KINDS

Central Maine Power Co.

141 MAIN STREET

Waterville. Maine.

Day & Smiley Co.

Contractors and Builders

Jobbing Promptly Attended to.

Shops Opposite the City Hall. Front Street

COLBY STUDENTS

are invited to the
**ELMWOOD HOTEL BARBER SHOP
and POOL ROOM**

HAYDEN CANDY CO.

Confectionery of all kinds—Ice Cream, Soda and Hot
Drinks.

FRESH HOME-MADE CANDIES OUR SPECIALTY.

We have a large line of High Grade Chocolates, in-
cluding the following well known brands:

SAMOSSET-BELL'S-S.S.-PIERCE-LENEX-NECCO.

Successor to Edward L. Simpson.

122 Main Street.

THE EMPIRE RINK

Sessions: 1.30 to 4.30,

7.00 to 10.00

**WE CATER TO PRIVATE
PARTIES FROM 4.30 to 7**

ROCHESTER THEOLOGICAL SEMINARY

ROCHESTER, N. Y.

FACULTY of sixteen professors and instructors, (including five in the German Department.)

EIGHT DEPARTMENTS: Old Testament, New Testament, English Bible, Church History, Theology, Christian Ethics, (including Sociology), and Pastoral Theology, Homiletics, Elocution. Special Courses in Christian Missions, Religious Pedagogy, and Church Music. Courses partly elective. Series of special lectures throughout the year by eminent men.

EQUIPMENT: New and completely furnished dormitory, with gymnasium, music room and parlor for social gatherings; Library enlarged and improved; Attractive reading room; Commodious chapel and class rooms.

ROCHESTER: a growing and progressive city of 225,000. Many varieties of religious and philanthropic work. Strong churches with able preachers. Noted for its Sunday Schools. Unusual opportunities for observation and practical experience. Privileges of the University of Rochester.

Address all requests for catalogues, correspondence regarding admission, etc., to

J. W. A. STEWART, Dean.

MISSION FURNITURE

Fills the demand for student's use. We have selected strong values in weathered oak Mission Furniture for your needs. Always good values in

DRAPERIES AND COUCH COVERS

ATHERTON FURNITURE COMPANY

81 MAIN STREET, WATERVILLE, MAINE

COLLEGE PRINTING

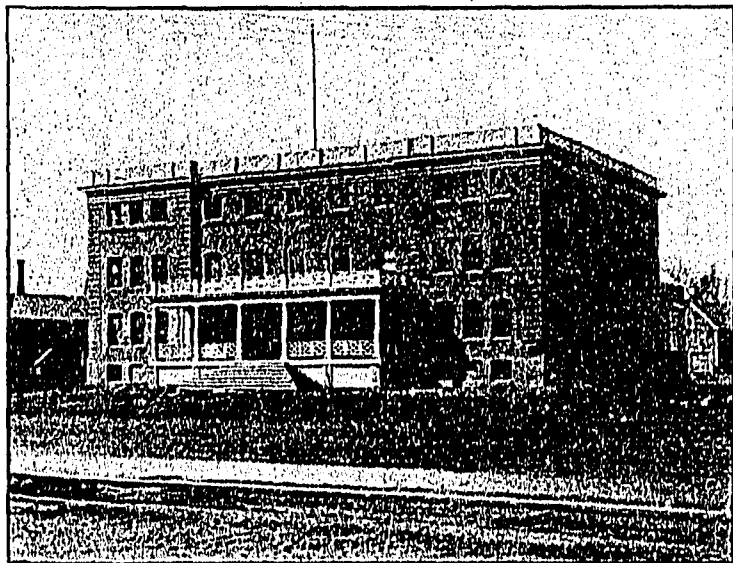
Demands snap and style

The CITY JOB PRINT is the place that will suit all tastes in the art. Engraved work a specialty. Savings Bank Building, Waterville, Me. Telephone 207 Take the Elevator.

McALARY & JOSEPH

FRED D. McALARY FRANCIS M. JOSEPH, '01.

RAILROAD Y. M. C. A.



MEMBERSHIP OPEN TO COLBY STUDENTS
Privileges:—Bowling, 5c a string. Pool, 15c an hour. Restaurant:—Lunches at all hours.

SEAVEY'S CAFE

OPPOSITE THE CAMPUS

The place to go for a classy

MIDNIGHT LUNCH

All Home Cooking

Boothby & Bartlett Co.

Successors to

L. T. BOOTHBY & SON CO.

GENERAL INSURANCE

176 Main Street

WATERVILLE, MAINE.



City Opera House

**MOVING PICTURES
AND VAUDEVILLE**

Horace Purinton Co.
Contractors and Builders

Manufacturers of Brick

Estimates furnished on application.

Head office at Waterville, Maine

T. A. GILMAN
OPTOMETRIST AND OPTICIAN

92 Main Street

WATERVILLE, MAINE

E. W. LUQUES

Drug Store

55 MAIN STREET

Mr. College Man, We Want You!



We've smart Fall Suits built for you, the kind Young Men who are "live wires" with flash in their eyes and hot blood in their veins want.

Our showing comprises Every New Kink in Tailoring! Every New Coloring in Fabric!

Suits at **\$10 \$15 \$20 \$25**

The H. R. DUNHAM CO.
The Students' Store

COME TO

Dunbar's Drug Store

FOR YOUR DRUG STORE WANTS

118 Main Street

Waterville, Me.

COLBY BOYS, ATTENTION!

We have the finest shop in Maine. Five good workmen. The COLLEGE POMPADOUR is one of our specialties.

Pomerleau's Antiseptic Tonsorial Parlors
85 Main Street

The Specialty Store

*Coats, Suits, Millinery,
Corsets, Gloves, Waists,
and Underwear.*

Cloutier Brothers

The College Printers

Fairfield Publishing Company

Fairfield, Maine