

The Colby Echo

Volume XVI

Waterville, Maine, December 4, 1912

Number 10



Published Wednesdays during the College Year by the Students of
Colby College.

EVERYTHING IN
Ladies Hosiery and Underwear
AT OUR STORE
AGENTS FOR EVERWEAR HOSIERY CO.
6 Pairs Guaranteed to wear 6 months, for Men and Women
WARDWELL DRY GOODS COMPANY
76 MAIN ST., WATERVILLE MAINE

Hager's

Confectionery and Ice Cream.

113 Main Street.

"We welcome you back and also to our store."

S. E. WHITECOMB CO.

Dealers in

GROCERIES, MEATS, FISH, PROVISIONS

FRUIT AND CANNED GOODS

Telephone 261

81 MAIN STREET

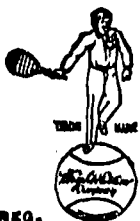
WRIGHT & DITSON

HEADQUARTERS FOR

Athletic Supplies

Base Ball
Lawn Tennis
Golf
Basket Ball
Track and
Field Sports
Foot Ball
Hockey

College Students
and Athletes who
want the real, supe-
rior articles for the
various sports
should insist upon
those bearing the
Wright & Ditson
Trade Mark.



REG.
U. S. PAT. OFF.

Catalogue Free

WRIGHT & DITSON

344 Washington Street
BOSTON, MASS.

NEW YORK

CHICAGO

SAN FRANCISCO

PROVIDENCE

CAMBRIDGE

WATERVILLE STEAM LAUNDRY

145 MAIN STREET

JOHN WELLS, D. U. HO. E. B. FARRAR, D. K. E. HO
Agents for Colby

Sidney A. Green

Andrew B. Green

S. A. & A. B. GREEN

COAL

HARD AND SOFT WOOD, AND KINDLINGS

Waterville, Maine.

TELEPHONE, 30

OFFICE, 251 MAIN STREET

CUT FLOWERS

MITCHELL & CO.

FLORISTS

144 Main Street,

Waterville, Me

The Gerald
FAIRFIELD, ME.

F. H. HOAR, Manager

First class in all its appointments. Bath and
Telephone in every room. Special
attention given to

**BANQUETS and PRIVATE DINNER
PARTIES**

WE : STRIVE : FOR : QUALITY NOT CHEAPNESS

We have many kinds of goods needed by students and they are all marked with reliability.

EMERY-BROWN COMPANY

DEPARTMENT STORE

COLBY MEMORABILIAS
COLBY PENNANTS
COLBY SEALS
BOOKS, STATIONERY
and FINE ART GOODS

H. L. KELLEY & COMPANY

130 Main Street

Waterville, Maine

S. L. PREBLE

66 Main Street, Waterville, Me.

College

Photographer

THE COLLEGE SUPPLY STORE



Text Books

Fountain Pens

Banners

Scrap Books

Stationery



A GENERAL COLLEGE SUPPLY

Send Your Subscriptions for the ECHO at Once---\$1.00.

At The "Prom"

You will preserve the permanency of your social position and insure constant recognition as a correct dresser if your dress clothes are made by tailors who understand your requirements.

As the only merchant
tailors maintaining a
separate shop of experts

whose entire time is devoted to meeting these exacting demands, we are able to deliver faultless style and fit and absolute satisfaction in workmanship and quality, at an exceptionally low price. Make your requirements known to our local dealer,

HEALD-ERVIN CO.

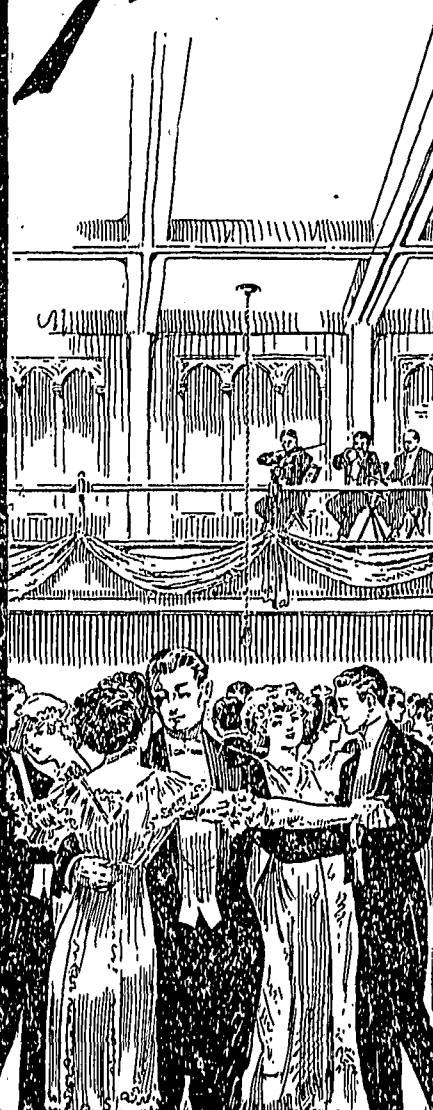
Clothiers and Haberdashers

108 Main St., Waterville

who will show you our dress woolens
and send us your correct measure.



Who's
TRADE MARK
Yours
REGD 1906 BY
Tailor?
ED.V. PRICE & CO.



E. V. Price & Co.

Largest tailors in the world of
GOOD made-to-order clothes

Price Building

Chicago, U. S. A.

THE COLBY ECHO.

Volume XVI, No. 10.

WATERVILLE, MAINE, DECEMBER 4, 1912.

Price Five Cents.

CONTENTS.

Debating	1
Athletic Council	1
Colby College Press Club	1
Zeta Psi	2
Phi Delta Theta	2
Alpha Tau Omega	2
Alpha Phi Alpha	3
Rhodes Scholarship	3
Thanksgiving at Foss Hall.....	3
Editorials	4
Locals	4
Inter-Fraternity Bowling League.....	5
Christmas Vacation	5
Student Council	5
Track Captain	5
Women's Division.....	6

DEBATING.

On Friday evening, November 22, in the chapel, was held the first of the preliminary debates, from which men will be chosen to represent the college in first and second debating teams. The question under discussion was: "Resolved: That the Electoral College should be abolished and that the President should be elected by the directed vote of the people."

The speakers for the affirmative were: N. E. Robinson, '15, R. A. Bramhall, '15, and D. W. Ellis, '13; for the negative: E. L. Wyman, '14, L. F. Murch, '15, and R. H. Bowen, '14. The following men spoke from the floor: E. M. Woodard, '15, W. J. Pendergast, '15, W. A. Mooers, '14, K. T. Royal, '15, R. E. Plaisted, '15, L. P. Spinney, '15, and B. A. Loane, '13. R. A. Putnam, '15, made an excellent presiding officer. The decision of the judges, as rendered by Professor John Hedman, was in favor of the negative.

The second debate of the series will be held next Friday evening, December 6, in the chapel. The question for debate will be: "Resolved: That the plan of pensions

for Public School Teachers of Maine as proposed by the committee representing the Maine Teachers' Association (1912) should be enacted into law by the next Maine Legislature."

Affirmative: R. I. Haskell, '14, J. M. Hogan, '15, G. F. Sturtevant, '16. Negative: L. G. Shesong, '13, P. F. Fraser, '15, John Wells, '13.

The board of judges will be: Professor John Hedman, Professor Herbert C. Libby, Professor Henry W. Brown, Rev. Henry C. Turner, Charles W. Atchley, Esq.

ATHLETIC COUNCIL.

The Athletic Council, at its meeting, Monday evening, recommended to the Athletic Association the name of Earle H. Davis, '14, as manager of the football team for next fall. It also voted to enlist itself in favor of the new plan for admission to the championship games, namely that one dollar shall pay for both admission to the grounds and grandstand or bleachers.

COLBY COLLEGE PRESS CLUB.

Two weeks ago, the newspaper reporters of the college assembled and organized the Colby College Press Club. The purpose of this club is to put college news before the public as promptly as possible. John P. Flanagan, '14, was elected President of the club, George W. Perry, '14, Secretary, and Herman Goffing, '16, Treasurer. An executive committee, consisting of Frederick F. Sully, '16, Chairman, Burton B. Blaisdell, '16, and George W. Perry, '14, was appointed.

ZETA PSI.

The annual initiation banquet of Chi chapter of Zeta Psi was held at the Elmwood Hotel, Tuesday evening, November nineteenth. Active and alumni members to the number of forty were present, and all pronounced it one of the most enjoyable gatherings in the history of the chapter.

Post Prandial:

Toastmaster William B. Carroll, '13
 Choragus William J. Pendergast, '15
 Greetings, Frederick G. Davis, '13

"We come, each other warmly greeting,
 In love fraternal, strong and true,
 Here at this shrine in ardor meeting,
 Our vows of friendship to renew."

Zeta Psi in After Days..... Oliver O. Hall, '93

"O Zeta Psi, thy fame shall never perish."

Zeta Psi in the College.. Lawrence R. Bowler, '13

"Throughout our college course, boys, where
 friendships true are made,
 The joys of Zeta Psi, boys, will never, never
 fade."

When Zeta Psi Was Young, Reuben W. Dunn, '68
 "And that is why upon my breast I wear, as years
 go by,

These ancient characters of gold, the badge of
 Zeta Psi."

The Initiates..... Asher E. Hinds, '16

By the oath our lips have taken,
 By the mystic letters three,
 We'll keep her faith unshaken,
 And brother to brother be."

Impromptu.

"Oh, speak the message far and wide, the procla-
 mation give,
 That Zeta Psi so glorious is destined long to live;
 So let us all our efforts lend, that she may ever
 thrive,

All hail to Zeta Psi."

The initiates were:

1914—John Patrick Flanagan.

1915—Rafe Nelson Hatt.

1916—Charles Wentworth Ricker,
 Philip Golding Curtis, Kenyon Field
 Chamberlain, Asher Estey Hinds, Hubert
 Hazen Barker, Francis Leo Irvin, War-
 ren Burleigh Marston, Roger Austin Nye,
 William Wallace Eustis.

PHI DELTA THETA.

The annual initiation banquet of Maine Alpha of Phi Delta Theta was held at the Elmwood, Wednesday evening, November twentieth.

Toasts:

Toastmaster..... Dr. John G. Towne, '05
 Lester A. Keyes, '13..... Welcome

"The bond that binds our hearts as one
 No power on earth shall break."

Albert M. Guptill, '15..... Response
 "Tis good to be a Phi."

Arthur J. Roberts, '90.

"We cast aside all care to-night,—
 Enough of that to-morrow."

Earle H. Davis, '14..... Our College Days

"On all that coming time unfolds
 Our college days their light shall throw."

Vinal H. Tibbetts, '14..... The Standards
 "Remember the Three Gates!"

Frank O. Dean, '09..... Phi Delta Theta
 "Hearken to her ancient glory,
 Old she is, yet ever young!"

Impromptu.

The initiates:

1914—Lorenzo Ernest Warren.

1915—Albert Mentzer Guptill, Nathan-
 iel Edgar Robinson.

1916—Shirley Goss Blackington, Robert
 James Doyle, William Joseph Larkin,
 John Francis Lowney, Irving Woodbury
 Merrill, Albert James O'Neil.

ALPHA TAU OMEGA.

The annual initiation banquet of Gam-
 ma Alpha chapter of Alpha Tau Omega
 was held Friday evening, November 22,
 at the Augusta House, Augusta.

Toasts:

Toastmaster Ernest C. Marriner, '13
 Choragus R. M. Hussey, '13

"The National Fraternity".....
 Alexander Macomber, Province Chief
 "It is a lofty feeling, yet a kind to have a sense
 Of honor—shaded thought—an influence."

The Third Quarter.....R. I. Haskell, '14
 "We stand at Armageddon and we battle for the Lord."

How It FeelsA. B. Riley, '16
 "Never more shalt thou revel in the vain glory of thy painted stern."

Our Inspiration.....Milroy Warren, '14
 "First, then, believe all women may be won;
 Attempt with confidence, the work is done."

Reminiscences of the By-gone Days.....
D. M. Young, '07
 "Those friends thou hast and their adoption tried,
 Grapple them to thy soul with hoops of steel."

In Medias Res.....H. S. Campbell, '15
 "When shall we all meet again,
 In thunder, lightning, or in rain?"

The Why of the Maltese Cross..L. G. Shesong, '13
 "Though again around the festal board we ne'er
 may gathered be,
 Our hearts remain united in our loved fraternity."

Initiates:

1914—Stanley B. Miller.

1915—Harold W. Rand.

1916—Robert A. Hussey, Lewis L. Levine, George W. Putnam, Arthur B. Riley, Irving Ross Stanwood, Woodford M. Rand, Edmund J. Higgins, Bert Wise and Arthur C. Gregory.

Following are the representatives from other New England chapters: J. R. Norton, from the University of Vermont; G. G. Tilley, from the University of Maine; F. B. Barnes, from Massachusetts Institute of Technology; C. F. Fritch, from Worcester Polytechnic Institute.

ALPHA PHI ALPHA.

The annual banquet of Alpha Phi Alpha was held Friday, November twenty-second at the Royal Café.

Toasts:

ToastmistressMyrtle Everett, '15
 "Noble souls through dust and heat
 Rise from disaster and defeat,
 The stronger."

ChoragusElizabeth Howland, '15
 "Music that gentler on the spirit lies,
 Than tir'd eyelids upon tir'd eyes."

FriendshipElla Robinson, '16
 "Then come the wild weather,
 Come sleet or come snow,
 We will stand by together,
 However it blow."

The AbsentAldine Gilman, '15
 "And tho life's tide doth part us wide,
 Our thoughts are still of thee."

College DaysMabelle Hunt, '14
 "We cannot buy with gold the old associations."

Alma Mater.....Jennie Farnum, '15
 "Fairest mother 'neath the sun."

FarewellBessie Tobey, '13
 "And must we part?
 Well—if we must, we must,
 And in that case,
 The less is said, the better."

Initiates:

1916—Ida Blanche Brown, Clara Louise Hinckley, Hazel Alice Moore, Ella Russell Robinson, Edith Wentworth Verrill.

RHODES SCHOLARSHIP.

Results of the Rhodes Scholarship examinations which were held at Augusta, in October, have come to hand. It is gratifying to note that Harold C. Morse, '14, the only Colby student who took the examinations, passed successfully. The final choice of the scholar will be made in January.

THANKSGIVING AT FOSS HALL.

The exodus of home-goers, on Wednesday, from Foss Hall, left only about thirty girls to enjoy the annual Thanksgiving festival here. Thursday morning was spent in busy preparation for the Thanksgiving feast. After the dinner, which was in every respect a regular Thanksgiving spread, with turkey, cranberry sauce, pies, etc., all the girls adjourned to the parlor, and played games, and told stories around the open fire, for the rest of the day.

THE COLBY ECHO

Published Wednesdays During the College Year by the
Students of
COLBY COLLEGE

EDITORIAL BOARD

Editor-in-Chief	- - - - -	Andrew Young, '18
ASSOCIATE EDITORS		
John Wells, '13		Nathaniel E. Robinson, '15
Everett S. Kelson, '14		Vernelle W. Dyer, '15
Robert E. Owen, '14		Merle F. Hunt, '15
Earle H. Davis, '14		Leslie F. Murch, '15
George W. Pratt, '14		George H. G. Campbell, '15
Business Manager	- - - - -	Harvey W. Mayo, '14
Assistant Manager	- - - - -	Robert H. Bowen, '14
Mailing Clerk	- - - - -	Lester F. Weeks, '15

Exchanges and all communications relating to the Literary and News departments of the paper should be addressed to THE COLBY ECHO, Waterville, Maine.

All remittances by mail should be made payable to the Business Manager.

Subscriptions, \$1.00 per year, in advance
Single Copies, Five Cents

Entered at the Post Office at Waterville, Maine, as Second Class Mail Matter.

Press of Fairfield Publishing Company.

Interesting figures relative to the steady growth of the college during the past five years are printed in the recent edition of The Colby Alumnus. The total registration, five years ago, was 239, while today, it is 396—an increase of more than 65 per cent. Numerous agencies have been at work to accomplish this. As the increase commenced when President Roberts took up his duties as chief administrator of the college, it is safe to say that the present conditions and the continued increase are mainly due to his entiring efforts. The students, too, have lent their aid by endeavoring to work for the best interests of the college, in all their activities. Alumni and faculty have also been active in securing and maintaining such a satisfactory record. The requirements both for admission and for graduation have been increased, during these years; and next fall will see the introduction of the certificate system, which will further tend to increase Colby's already high standard of scholarship.

When President Roberts announced that the Christmas vacation was to be shortened by one week, general satisfaction was expressed by the majority, if not by all, of the student body. Within the past few years, considerable disapproval of the three weeks' vacation has been manifested; for Commencement coming late in June has deprived many students from participating in the exercises of that important occasion. Although the trustees have had in view the best interests of Commencement Week, by planning for a large return of graduates—and no under-graduate would seek to deprive Commencement of their presence—yet the sentiment and convenience of the student body ought to be considered to a certain extent. It is to be hoped that the trustees, in their January meeting, will make permanent this temporary arrangement for a shorter Christmas vacation.

LOCALS.

George L. Beach, '13, spent Thanksgiving vacation at his home in Waterbury, Conn. From Waterbury he went to Memphis, Tenn., as a delegate to the sixty-sixth annual convention of the Delta Kappa Epsilon Fraternity which is being held there this week.

Librarian Chipman attended the conference of Eastern College Librarians, at Columbia University, during the Thanksgiving recess. One of the speakers was Dr. H. L. Koopman, '80, librarian of Brown University.

Dr. F. E. Wolfe was married to Miss E. T. Love, A. M., of Lonaconing, Maryland, in New York, Wednesday, November 27. Congratulations.

Rev. William Fletcher, '91, of Waterville, gave an interesting address on Sunday School work, before the Ministerial Association, Monday evening.

Professor H. W. Brown led the Y. M. C. A. meeting, Tuesday evening.

Omer J. Lombard, of Guilford, visited friends at the D. K. E. House, Sunday and Monday.

Vernon W. Bridges, of Dover, visited Edmond B. Farrar, '14, Monday.

INTER-FRATERNITY BOWLING LEAGUE.

Representatives from the five fraternities met with Secretary J. B. Northcott, of the Railroad Y. M. C. A., in his office, Tuesday afternoon, November 18, to discuss plans for the annual Inter-fraternity Bowling League. Officers were elected as follows: President, William B. Carroll, '13; Vice-President, Charles J. Keppel, '13; Secretary, Everett L. Wyman, '14; Treasurer, Don J. Whitney, '14.

A committee to draw up rules regulating the League comprised: John P. Kennedy, '13, Everett L. Wyman, '14, and Don J. Whitney, '14. A silver cup will be presented to the winning team. The following schedule has been made out for December and January:

DECEMBER.

Tuesday, 3rd, Delta Kappa Epsilon vs. Zeta Psi.

Thursday, 5th, Alpha Tau Omega vs. Delta Upsilon.

Saturday, 7th, Zeta Psi vs. Phi Delta Theta.

Tuesday, 10th, Delta Kappa Epsilon vs. Alpha Tau Omega.

Thursday, 12th, Delta Kappa Epsilon vs. Delta Upsilon.

Saturday, 14th, Alpha Tau Omega vs. Zeta Psi.

Tuesday, 17th, Delta Kappa Epsilon vs. Phi Delta Theta.

JANUARY.

Tuesday, 7th, Alpha Tau Omega vs. Phi Delta Theta.

Thursday, 9th, Delta Upsilon vs. Zeta Psi.

Saturday, 11th, Delta Upsilon vs. Phi Delta Theta.

CHRISTMAS VACATION.

President Roberts announced in chapel Wednesday morning, that the Christmas vacation would extend from December 17, to January 2, instead of to January 9. This change is only temporary, as the board of trustees will have to take action on the matter at their semi-annual meeting in January. If the trustees see fit to change the vacation from three weeks to two weeks, as proposed at this time, Commencement will come a week earlier, this year; but, if they do not ratify the action of the faculty, the Spring vacation will be lengthened one week, to make up for the loss at Christmas.

STUDENT COUNCIL.

The first meeting of the Student Council was held Thursday, November 21. The following officers were elected: President, E. C. Marriner, '13; Secretary, C. J. Keppel, '13; Treasurer, Rafe N. Hatt, '15. Plans for the year were discussed. A committee was appointed to investigate the matter of installing electric lights on the campus. A letter was sent to Mr. Chessman, ex-'16, expressing the sympathy of the college at his recent misfortune. A committee was appointed to confer with the faculty to determine the sentiment of that body in regard to shortening the Christmas vacation. The next meeting of the Council is set for December 5. The organization is always ready for suggestions from any member of the student body on all matters of college policy.

TRACK CAPTAIN.

A special meeting of the track "C" men was held last week to consider the appointment of a temporary captain to serve during the absence of Captain Nardini. Robert H. Bowen, '14, who has been a strong factor on the team since his freshman year, was elected to the position.

WOMEN'S DIVISION.

MARY PHYLLIS ST. CLAIR, Editor.
 MARIAN E. INGALLS, Business Manager.

Thursday evening, November 21, the Junior girls held a class party at the Taconnet Club House, with Dean Bass as chaperon.

Saturday evening, November 23, the Sophomores held a social for the benefit of the Y. W. C. A. After an informal reception, the following program was given:

Duet...Lois Osgood, '16, Elizabeth Hodgkins, '16
 SoloMarion Wyman, '16
 Reading.....Merle Bowler, '15
 Piano Solo.....Frances Pollard, '13
 ReadingMarion Stewart, '15
 Flute Solo.....Clair McIntyre, '16
 Reading.....Eleanor Bradlee, '16
 SoloMarjorie Scribner, '14

Florence Carll, '12, of China, and Amy Tilden, ex-'15, of Hallowell, entertained friends at their home during the holidays.

Jeannette Winchester, ex-'12, was in town last week.

Vivian Skinner, ex-'15, has returned to college, and will continue her course with the present Freshman class.

Gladys Paul, '14, has returned to college.

Annie Pepper Varney, '97, led the Y. W. C. A. meeting, Tuesday night.

Emma Leighton, '12, was the guest of Ethel Chamberlain, '15, Saturday.

Eva Pratt, ex-'14, has been visiting at Foss Hall, Monday.

Globe Steam Laundry

P. W. HUSSEY, Agent

A. T. O. House

Why You Should Insure

IN

The Provident Life and Trust Company

It is surrounded by greater safeguards than any other life insurance company, and gives greater guarantees for the future.

Its charter provides for the continuance of the present wise and conservative management.

It will, under all circumstances, deal fairly with you.

Its practice is to grant an extension of time if the insured is unable to pay premiums when due.

Its policies are non-forfeitable after the payment of BUT TWO annual premiums.

Its investments are secure, its management economical, and its premium rates are low.

Its rate of mortality from organization is below all other American companies and its dividends from this source correspondingly larger.

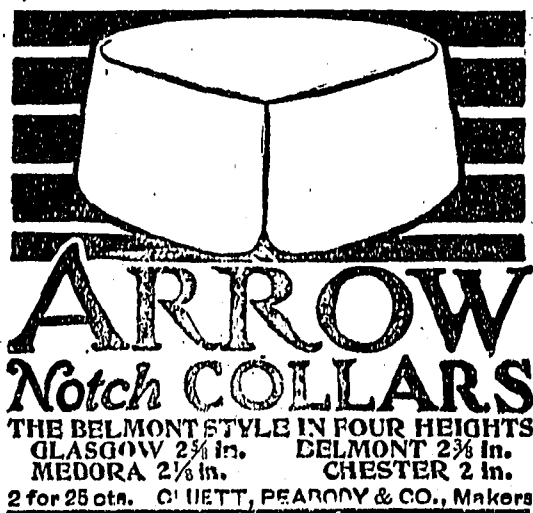
Write for full information to

FREEMAN M. GRANT,

General Agent for Maine,

Fidelity Building,

Portland, Me.



COPLEY SQUARE HOTEL

HUNTINGTON AVENUE, EXETER AND BLAGDEN STREETS

BOSTON, MASS.

Headquarters for professional, college, and athletic teams when in Boston.

360 Rooms

200 Private Baths

AMOS H. WHIPPLE, Proprietor.

THE ROYAL CAFE



ROBINSON & DAVISON, Proprietors.

Write Ideas for Moving Picture Plays !

YOU CAN WRITE PHOTO PLAYS AND
EARN \$25. OR MORE WEEKLY
WE WILL SHOW YOU HOW !

If you have ideas—if you can *think*—we will show you the secrets of this fascinating new profession. Positively no experience or literary excellence necessary. No “flowery language” is wanted.

The demand for photoplays is practically unlimited. The big film manufacturers are “moving heaven and earth” in their attempt to get enough good plots to supply the ever increasing demand. They are offering \$100. and more, for single scenarios, or written ideas.

We have received many letters from the film manufacturers, such as VITAGRAPH, EDISON, ESSANAY, LUBIN, SOLAX, IMP, REX, RELIANCE, CHAMPION, COMET, MELIES, ETC., urging us to send photoplays to them. We want more writers and we'll gladly teach you the secrets of success.

We are selling photoplays written by people who “never before wrote a line for publication.” Perhaps we can do the same for you. If you can think of only one good idea every week, and will write it out as directed by us, and it sells for only \$25. a low figure,

YOU WILL EARN \$100 MONTHLY FOR SPARE TIME WORK.

FREE SEND YOUR NAME AND ADDRESS AT ONCE FOR FREE COPY OF
OUR ILLUSTRATED BOOK, “MOVING PICTURE PLAYWRITING.”

Don't hesitate. Don't argue. Write *now* and learn just what this new profession may mean for you and your future.

**NATIONAL AUTHORS'
INSTITUTE**

**R-662-1543 Broadway
NEW YORK CITY**

COLBY FACULTY, STUDENTS AND FRIENDS

You are invited to inspect the

Magnificent Display of Fall and Winter Merchandise

Comprising all the New and Snappy Styles in Ready-to-wear Garments, Furs, Millinery, Hosiery, Underwear, Gloves, Dress Goods, Silks, Trimmings, Neckwear, Leather Goods and Staple Dry Goods at the

L. H. SOPER DEPARTMENT DRY GOODS STORE

54-56 MAIN ST., WATERVILLE, MAINE

G. S. FLOOD & CO.

Shippers and dealers in all kinds of

**Anthracite and
Bituminous Coal.**

Also Wood, Lime, Cement, Hair, Brick,
and Drain Pipe.

Coal Yards and Office, Corner Main and Pleasant Streets

Down Town Office, S. E. WHITCOMB CO.

Up Town Office, E. L. GOVE.

Winslow Office, E. W. ALLEN.

Plains Office, ARTHUR DARVIAU, 83 Water St.

THE ELMWOOD HOTEL

*Run by
College Men
for
College
Men*

W. C. HAWKER & CO.

Druggists

Agency For

**Kodak
Supplies**

MARIE SAUNDERS'
WHITMAN'S
FOSS'
Chocolates

The New Augusta House

WILBUR T. EMERSON, Manager

AUGUSTA, MAINE

Special Attention Given to Banquets

Students' Headquarters for Custom-Made Clothes



Large line of novelty woolens, clothes
specially designed for young men.

Repairing and Pressing Department.



L. R. BROWN

CASH MERCHANT TAILOR

95 Main Street

Waterville Typewriter Exchange

89 Main St., Waterville, Me.

All kinds of TYPEWRITERS to sell and to rent.
High Grade Supplies

Next door below W. & F. Ry. Waiting Room.

W. A. JUDGE

MAKES FINE PHOTO VIEWS

FILMS DEVELOPED AND PRINTED
IN THE BEST STYLE

THE DeGRUCHY COMPANY

THE CORNER STORE

WATERVILLE, MAINE

Newness, Merit, Economy are all in evidence in the fine collection of Autumn and Winter Merchandise we are showing a display that is worth your fullest consideration.

New apparel of every sort for Young Men and Women, the smartest production that point the way to this store for the latest styles in the fashionable world.

AGENTS FOR THE HART SCHAFFNER AND MARX CLOTHES FOR MEN
MILLINERY AND GARMENTS IN THE MOST ADVANCED STYLES

The DeGRUCHY COMPANY, - - - Waterville, Maine

F. A. HARRIMAN

JEWELER

52 Main Street, Waterville, Maine

College Avenue Pharmacy

DRUGGISTS

Opposite Athletic Field

Kennison & Newell
Painters and Paper-Hangers

Paper Hangings, Room Mouldings,
Paints, Oils, Varnishes and Glass.
Tel. 366 76 Temple Street

Dr. Gordon B. Hatfield

DENTIST

GOLD WORK A SPECIALTY

Savings Bank Bldg., 173 Main St., Waterville, Maine
Telephone Connection

Ticonic National Bank

GEO. K. BOUTELLE, President

N. D. BATES, Cashier

TRANSACTS A GENERAL BANKING BUSINESS

Pays 4 per cent. interest in Savings Department.

Open Saturday evenings, 7 to 9.

TAILOR E.D.

Makes SNAPPY, STYLISH SUITS

REPAIRING NEATLY DONE

Two-piece Suits from \$12.00 to \$35.00

Telephone 345-1

Opposite Electric Waiting Room 88 Main St.
The Sanitary Place

BRETON & LAVERDIERE

BARBERS AND HAIRDRESSERS

The Home for Anticorn. The Magic Safety
Corn Shaver. The little Razor that ends the
aching corn.

REDINGTON & COMPANY

HOUSE FURNISHERS

FURNITURE, CARPETS, CROCKERY,

Mirrors, Mattresses, Feathers, Etc.

We Re-upholster Old Furniture and Repolish Frames.
SILVER STREET, WATERVILLE, ME.

The Headquarters For

SEA FOODS

Also choice Meats, Poultry, and Vegetables.

Is At

MCCALLUM'S

136 Main Street

Phone 450

Coburn Classical Institute

Waterville, Maine

*The Eighty-fifth year will begin
September 10, 1913.*

*For catalog and other information,
address,*

*Drew T. Harthorn, A. M.,
Principal.*

QUEERY? ? ? ? AND THEN SOME? ?

Should a DENTIST be a College man?

F. A. KNOWLTON D.D.S., (Doctor of Dental Surgery)

Tufts Dental College '88, Boston

On deck at FAIRFIELD ever since—Over Post Office—24 yrs. 'Nuff said.

**Waterville Steam
Dye House**

Dyeing, Cleaning, Pressing, Repairing
12 MAIN STREET.

JOHN N. WEBBER, Pres. J. F. PERCIVAL, Cashier

**The
Peoples National
Bank**

ACCOUNTS SOLICITED

ELECTRIC SUPPLIES

OF ALL KINDS

Central Maine Power Co.

141 MAIN STREET

Waterville. Maine.

Day & Smiley Co.

Contractors and Builders

Jobbing Promptly Attended to.

Shops Opposite the City Hall. Front Street

COLBY STUDENTS

are invited to the
**ELMWOOD HOTEL BARBER SHOP
and POOL ROOM**

HAYDEN CANDY CO.

Confectionery of all kinds—Ice Cream, Soda and Hot Drinks.

FRESH HOME-MADE CANDIES OUR SPECIALTY.

We have a large line of High Grade Chocolates, including the following well known brands:

SAMOSSET-BELL'S-S.S.-PIERCE-LENOX-NECCO.

Successor to Edward L. Simpson. 122 Main Street.

THE EMPIRE RINK

Sessions: 1.30 to 4.30,
7.00 to 10.00

**WE CATER TO PRIVATE
PARTIES FROM 4.30 to 7**

ROCHESTER THEOLOGICAL SEMINARY

ROCHESTER, N. Y.

FACULTY of sixteen professors and instructors, (including five in the German Department.)

EIGHT DEPARTMENTS: Old Testament, New Testament, English Bible, Church History, Theology, Christian Ethics, (including Sociology), and Pastoral Theology, Homiletics, Elocution. Special Courses in Christian Missions, Religious Pedagogy, and Church Music. Courses partly elective. Series of special lectures throughout the year by eminent men.

EQUIPMENT: New and completely furnished dormitory, with gymnasium, music room and parlor for social gatherings; Library enlarged and improved; Attractive reading room; Commodious chapel and class rooms.

ROCHESTER: a growing and progressive city of 325,000. Many varieties of religious and philanthropic work. Strong churches with able preachers. Noted for its Sunday Schools. Unusual opportunities for observation and practical experience. Privileges of the University of Rochester.

Address all requests for catalogues, correspondence regarding admission, etc., to

J. W. A. STEWART, Dean.

MISSION FURNITURE

Fills the demand for student's use. We have selected strong values in weathered oak Mission Furniture for your needs. Always good values in

DRAPERIES AND COUCH COVERS

ATHERTON FURNITURE COMPANY

81 MAIN STREET, WATERVILLE, MAINE

COLLEGE PRINTING

Demands snap and style

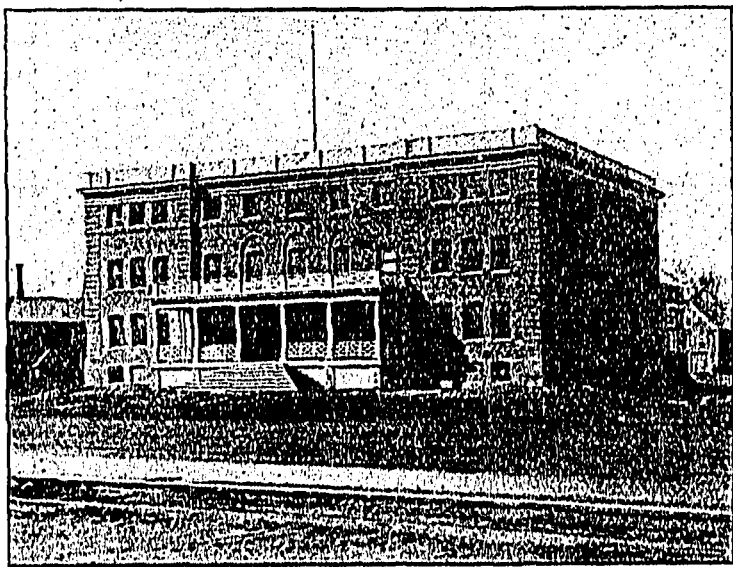
The CITY JOB PRINT is the place that will suit all tastes in the art. Engraved work a specialty. Savings Bank Building, Waterville, Me. Telephone 207 Take the Elevator.

McALARY & JOSEPH

FRED D. McALARY

FRANCIS M. JOSEPH, '01.

RAILROAD Y. M. C. A.



MEMBERSHIP OPEN TO COLBY STUDENTS
Privileges:—Bowling, 5c a string. Pool, 15c an hour. Restaurant:—Lunches at all hours.

SEAVEY'S CAFE

OPPOSITE THE CAMPUS

The place to go for a classy

MIDNIGHT LUNCH

All Home Cooking

Boothby & Bartlett Co.

Successors to

L. T. BOOTHBY & SON CO.

GENERAL INSURANCE

176 Main Street

WATERVILLE, MAINE.



City Opera House

**MOVING PICTURES
AND VAUDEVILLE**

Horace Purinton Co.
Contractors and Builders

Manufacturers of Brick

Estimates furnished on application.

Head office at Waterville, Maine

T. A. GILMAN

OPTOMETRIST AND OPTICIAN

92 Main Street

WATERVILLE, MAINE

E. W. LUQUES

Drug Store

55 MAIN STREET

Mr. College Man, We Want You!



We've smart Fall Suits built for you, the kind Young Men who are "live wires" with flash in their eyes and hot blood in their veins want.

Our showing comprises Every New Kink in Tailoring! Every New Coloring in Fabric!

Suits at **\$10 \$15 \$20 \$25**

The H. R. DUNHAM CO.
The Students' Store

COME TO

Dunbar's Drug Store

FOR YOUR DRUG STORE WANTS

118 Main Street

Waterville, Me.

COLBY BOYS, ATTENTION!

We have the finest shop in Maine. Five good workmen. The COLLEGE POMPADOUR is one of our specialties.

Pomerleau's Antiseptic Tonsorial Parlors

85 Main Street

The Specialty Store

*Coats, Suits, Millinery,
Corsets, Gloves, Waists,
and Underwear.*

Cloutier Brothers

The College Printers

Fairfield Publishing Company

Fairfield, Maine