



Colby College  
Digital Commons @ Colby

---

CLAS: Colby Liberal Arts Symposium

---

Apr 30th, 2:00 PM - 3:55 PM

## Atlas of Maine: Piping Plover and Least Tern Habitat

Jeffrey Vaz  
*Colby College*

Follow this and additional works at: <https://digitalcommons.colby.edu/clas>



Part of the [Economics Commons](#)

---

Vaz, Jeffrey, "Atlas of Maine: Piping Plover and Least Tern Habitat" (2015). *CLAS: Colby Liberal Arts Symposium*. 144.  
<https://digitalcommons.colby.edu/clas/2015/program/144>

This Poster is brought to you for free and open access by Digital Commons @ Colby. It has been accepted for inclusion in CLAS: Colby Liberal Arts Symposium by an authorized administrator of Digital Commons @ Colby.

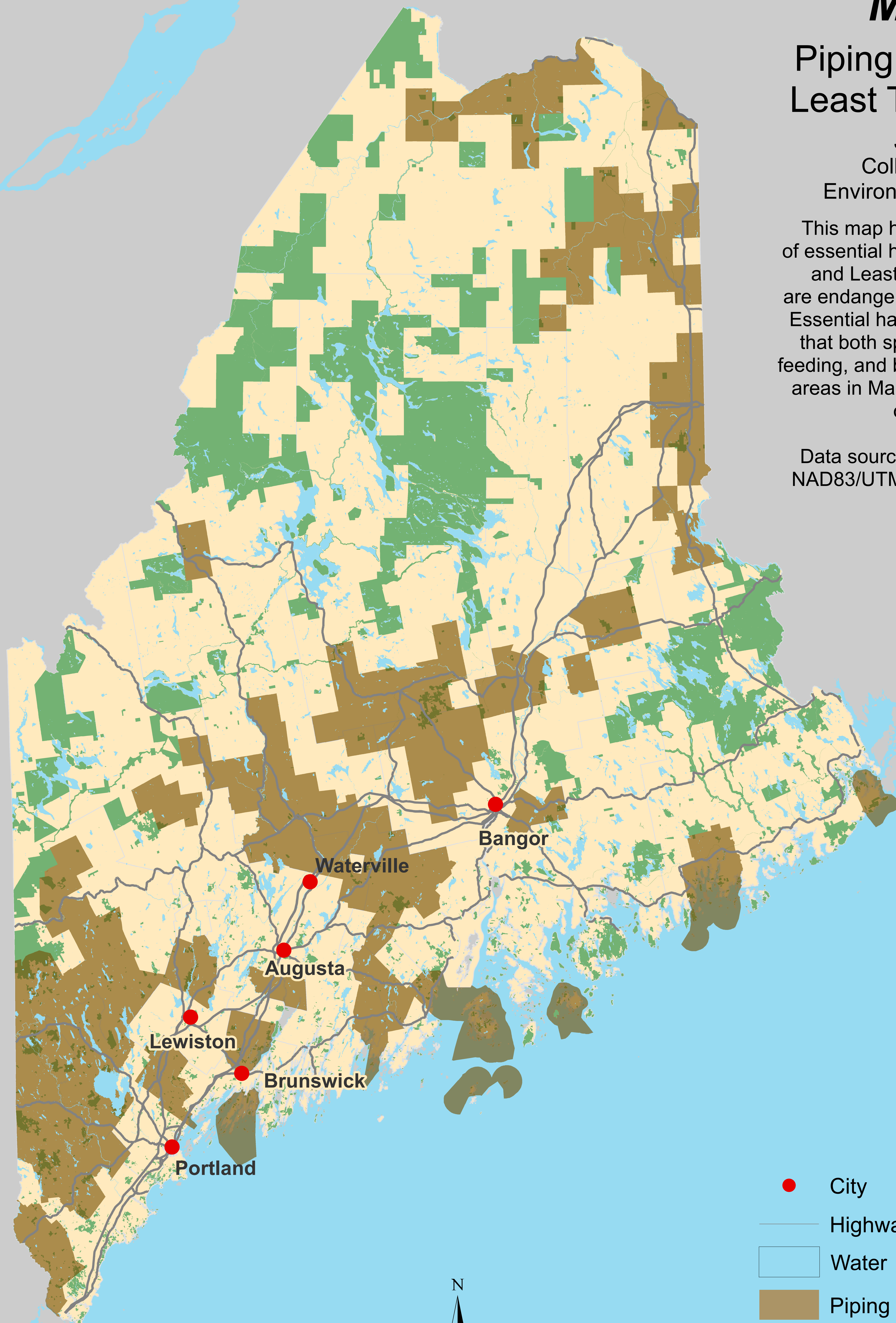
# Maine

## Piping Plover and Least Tern Habitat

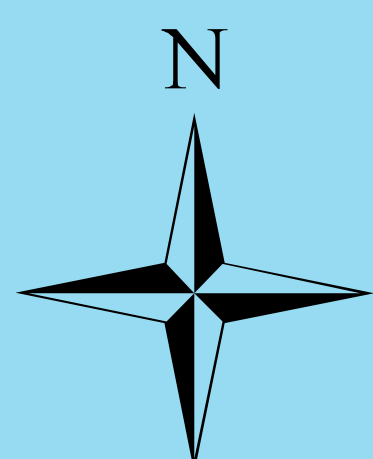
Jeff Vaz  
Colby College  
Environmental Studies

This map highlights the locations of essential habitat for Piping Plovers and Least Terns, both of which are endangered in the state of Maine. Essential habitat is defined as areas that both species use for nesting, feeding, and brood-rearing. Conserved areas in Maine are also highlighted on the map.

Data source: Maine Office of GIS  
NAD83/UTM Zone 19N Coordinate System



0 5 10 20 30 40  
Miles



- City
- Highway
- Water
- Piping Plover/Least Tern Habitat
- Conserved Lands