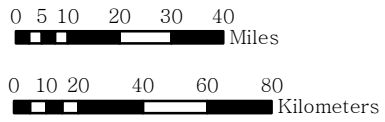
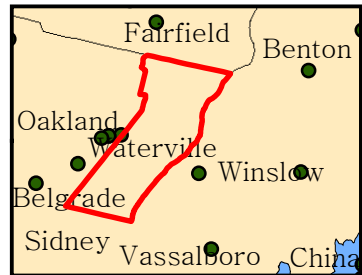
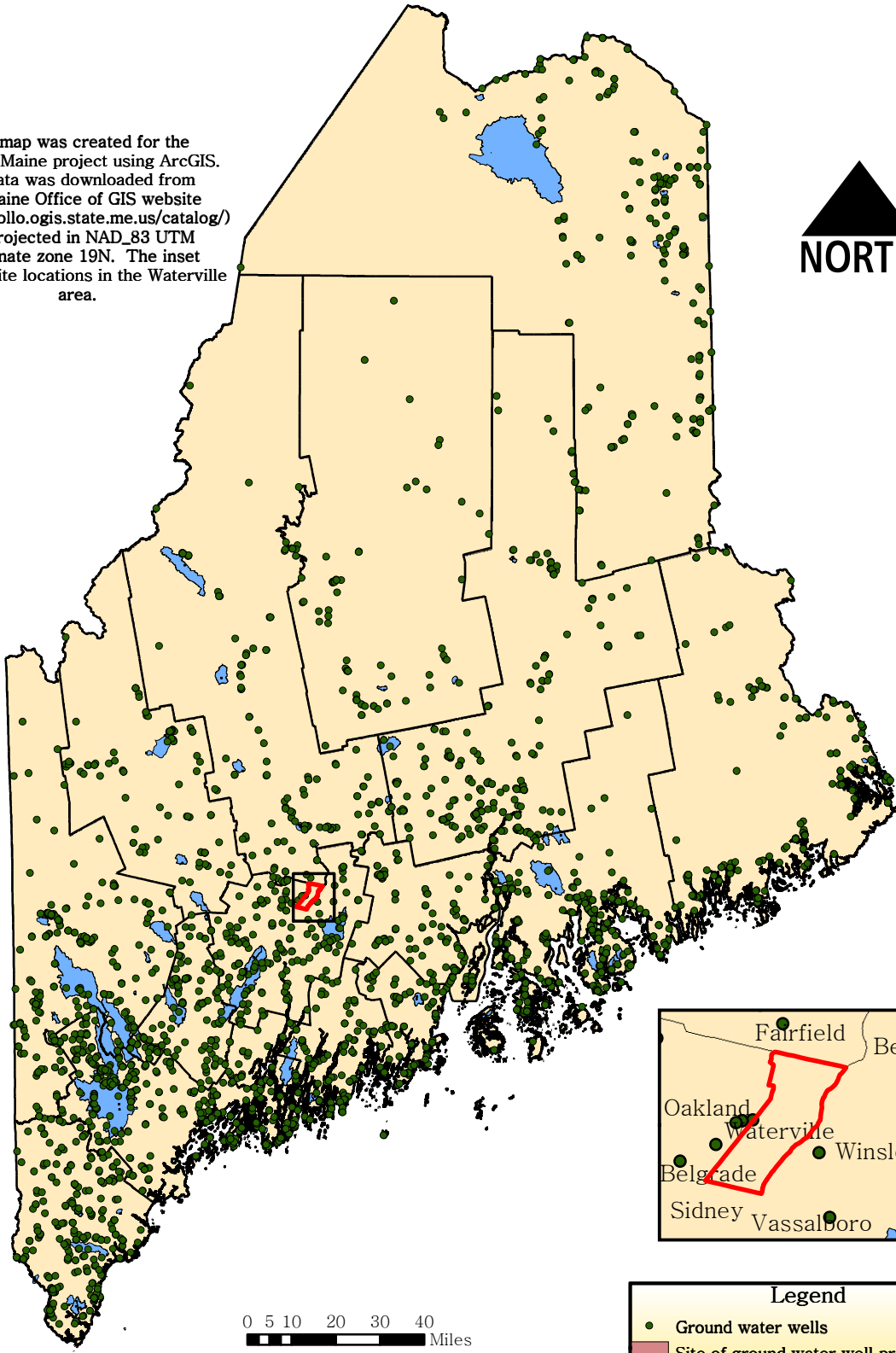


# Maine Public Water Supplies

This map was created for the Atlas of Maine project using ArcGIS. All data was downloaded from the Maine Office of GIS website (<http://apollo.ogis.state.me.us/catalog/>) and projected in NAD\_83 UTM coordinate zone 19N. The inset depicts site locations in the Waterville area.



**Legend**

- Ground water wells
- Site of ground water well protection
- Surface water supply (lakes, reservoirs)
- County boundary

Karen Prisby  
ES 212  
March, 2006

