

## **Session 1**

### **Human/Nature**

Lauren Lessing, Mirken Director of Academic and Public Programs, Colby College  
Museum of Art

This session will trace the links between visual landscapes, physical topographies, and socio-political constructs in photographic practice.

#### *Discussion Questions:*

How do photographs of landscapes differ from other forms of representation (ie. paintings, digital images, etc.)? What makes them distinct?

What kinds of relationships do photographs create between viewers and particular places? In each case presented here, how does interacting with the photograph itself, rather than just an image, affect your relationship to the place depicted?

How does the photographic representation of land as landscape reflect (and help to construct) political, social, and environmental attitudes?

What role do beauty and visual pleasure play in our relationship to these objects? Are they seductive, persuasive, deceptive?

## Exhibition checklist

---

2011.012

**Platt Babbitt**

***Niagara Falls***

Daguerreotype

9 in. x 7 in. (22.86 cm x 17.78 cm)

Museum purchase from the Jette Acquisition Fund

---

408.2008

**Imogen Cunningham**

***On Mount Rainier***

1915, printed later

Gelatin Silver Print

8 1/8 in. x 6 1/2 in. (20.64 cm x 16.51 cm)

Promised gift of Norma B. Marin



309.2008

**John Rohrbach**

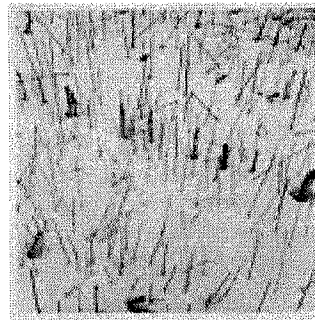
***Untitled (Millerton Landscape)***

1985

Gelatin Silver Print

14 1/16 in. x 11 in. (35.72 cm x 27.94 cm)

Promised gift of Norma B. Marin



2007.014

**Mitch Epstein**

***Biloxi, Mississippi (From American Power Series)***

2005

C print

45 in. x 58 in. (114.3 cm x 147.32 cm)

Gift of Burt Silberstein '49 and Museum purchase from the Jetté Acquisitions Fund



## Exhibition checklist

---

2013.548

**Richard Mosse**

***Safe From Harm***

2012

Digital c-print

28 x 35 in. (71.12 x 88.9 cm)

Museum purchase from the Jette Acquisition Fund

---