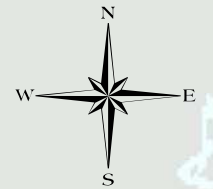
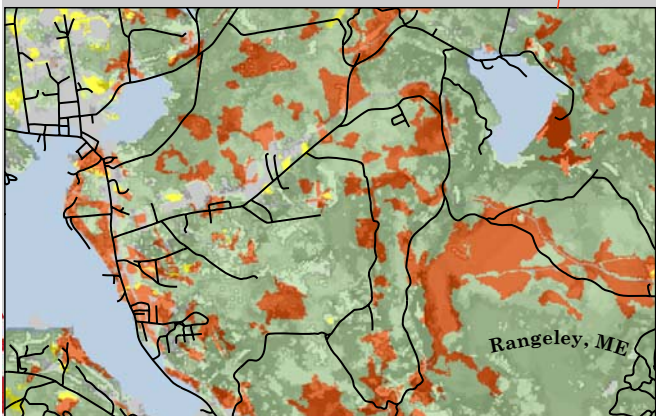
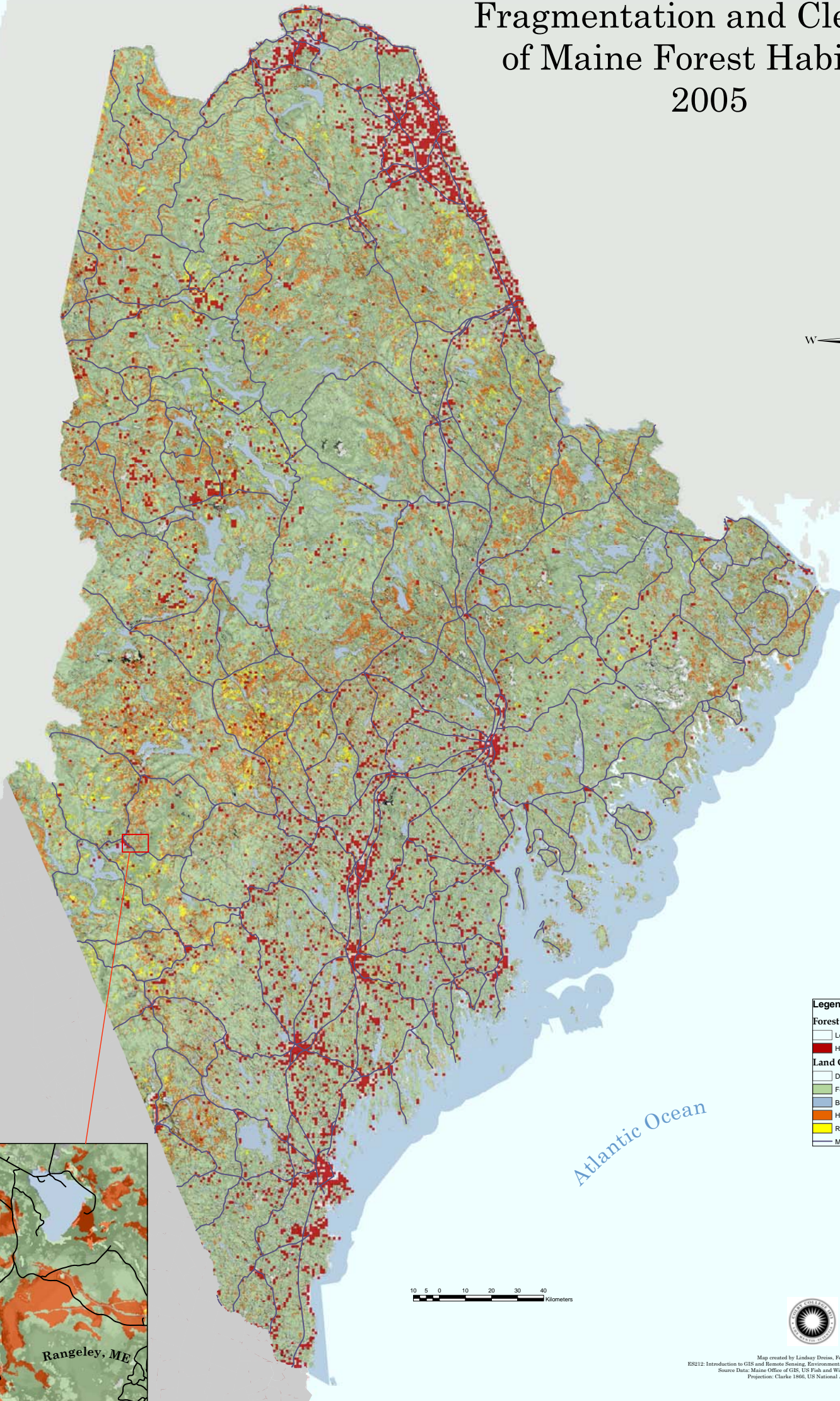


Fragmentation and Clearing of Maine Forest Habitats 2005

CANADA



The purpose of this map is to convey the extent of fragmentation in Maine's forests. The inset of the map shows the town of Rangeley, a town important to the logging industry. I chose this particular area to show the immediate effects of logging roads and clear cutting on a local scale. On a larger scale, Maine county rasters from the Office of GIS were merged to emphasize forest cover. The foreground layer, also taken from the Maine Office of GIS, is a remote-sensing image compiled by a number of state departments to identify the various land covers. The data was used to focus on current, cleared, and regenerating forest locations as of 2005. A raster layer from the National Atlas database of National Land Cover Data assesses the magnitude of forest fragmentation due to human activities. Roads were also included to emphasize the development of roadways as a cause of fragmentation.



Legend

Forest Fragmentation

- Low Fragmentation
- Human Fragmentation

Land Cover

- Developed and Agricultural Lands
- Forest Cover
- Bodies of Water
- Harvested Forest
- Regenerating Forest
- Main Roadways

