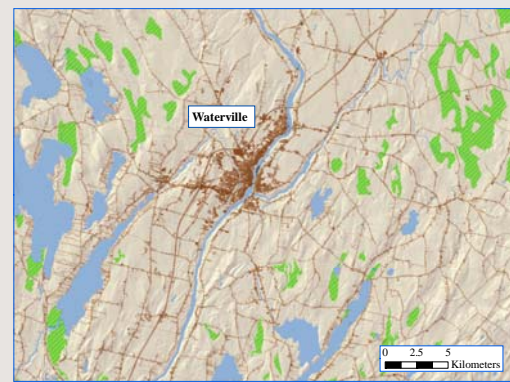


Wetlands and Development in Maine

CANADA



A closer view of the wetlands and development in Waterville, Maine. Notice how wetlands are surrounding the town, but they do not occur within the town center. This could be a sign that Waterville developed over wetland areas while constructing the town.

NH

ATLANTIC OCEAN

LEGEND

-  Wetlands
-  Impervious Surfaces
-  Natural Vegetation
-  High Development



0 12.5 25
Kilometers
0 12.5 25
Miles

Alaina Clark
Colby College
Department of Environmental Studies
March 2008

This map shows the distribution of wetlands in comparison to areas of development.
Scale: 1:425,000

Data Source: Maine Office of GIS.
<http://apollo.ogis.state.me.us/catalog/catalog.asp>
Wetland Data: 1998
Impervious Surfaces: 2004

UTM Zone 19, NAD 1983