

Colby



Colby College
Digital Commons @ Colby

Colby Alumnus

Colby College Archives

1951

Colby Alumnus Vol. 40, No. 3: March 1951

Colby College

Follow this and additional works at: <https://digitalcommons.colby.edu/alumnus>



Part of the [Higher Education Commons](#)

Recommended Citation

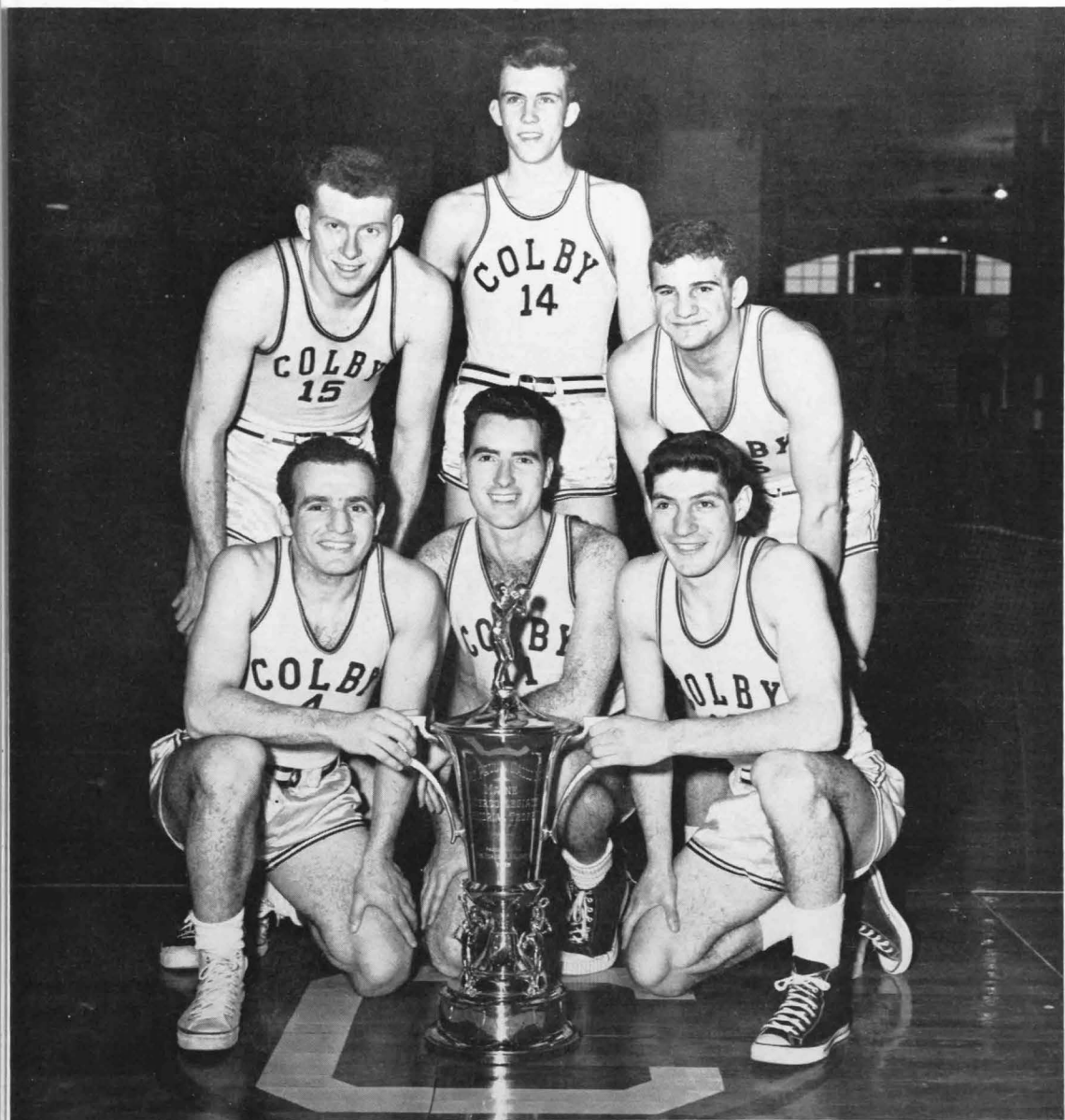
Colby College, "Colby Alumnus Vol. 40, No. 3: March 1951" (1951). *Colby Alumnus*. 331.
<https://digitalcommons.colby.edu/alumnus/331>

This Other is brought to you for free and open access by the Colby College Archives at Digital Commons @ Colby. It has been accepted for inclusion in Colby Alumnus by an authorized administrator of Digital Commons @ Colby.

THE COLBY ALUMNUS



MARCH, 1951



A Colby Dedication
for
LINCOLN'S BIRTHDAY

SIX SCORE and eighteen years ago, our fathers brought forth in this state, a new college, conceived in Faith, and dedicated to the proposition that youth might be given opportunity for education.

Now we are engaged in a great economic struggle; testing whether that college, or any college so conceived and so dedicated, can long endure. We are now entering on a great testing ground of that struggle. There has been dedicated on this campus, in beautiful buildings, a tribute to those who here gave of their strength and wisdom that this college might live. It is altogether fitting and proper that this should have been done.

But, in a larger sense, we may not be able to so dedicate — so consecrate — this college ourselves, with our personal sacrifice. The brave men, living and dead, who labored here, have consecrated it often far above our power to add or detract. The world will little note, nor long remember what we now do here, but future Colby generations will remember what will have been done here. It is for us living alumni rather to now dedicate ourselves to the unfinished work which they who sacrificed before us have thus far so nobly advanced. It is rather for us to be here dedicated to the great task remaining before us — that from honored leaders we take increased devotion to that cause for which they gave in full measure of devotion — that we here highly resolve that these stalwart men shall not have given of their vision in vain; that this college, under God, shall have a re-birth of inspiration and hope — and that education of youth under free enterprise shall continue in this land.

Written on February 12, 1951, by
Carleton D. Brown '33, chairman of
the 1951 Alumni Fund Committee.

The Colby Alumnus

FOUNDED 1911

VOLUME 40 MARCH 15, 1951 NUMBER 3

Editor RICHARD NYE DYER
Business Manager ELLSWORTH MILLETT, '25

The President's Page	2
Talk of the College	3
Sports	7
News from Colby Clubs	9
Alumni Fund Report	11
Colby Folk in the Headlines	17
Class News	18
In Memoriam	32

Published four times yearly on the 15th of October, December, March, and July by the Alumni Council of Colby College. Subscription rate — \$2.50. Single copies — \$.75. Entered as second-class matter Jan. 25, 1912, at the Post Office at Waterville, Me., under Act of March 2, 1879.

I *On Our Cover*
It is difficult to write "finis" to the greatest basketball team in the history of Colby and to a home winning streak of fourteen consecutive games. But that record is now history. What remains are memories of exciting nights, driving lay-up shots, and a crowded fieldhouse yelling its heart out.

The players on our cover, kneeling with the State Series trophy, are only six of a squad of twenty who provided a top season of competition — Johnny Jabar, Captain Warren Finegan, Ted Shiro (in front); Ro Nagle, Ted Lallier, and Frank Piacentini (in back).

Surprisingly enough all the thrills were not provided by the team. The Colby cheering section took over on at least one occasion — Bowdoin's startling two point victory over Boston University in the consolation contest of the New England tournament.

To hear Colby's cheers going out in ever louder intensity; to hear Colby's band strike up Bowdoin's Alma Mater; to see Colby students rise, applaud, and cheer a Bowdoin team as wildly as their own, re-emphasized the solid footing on which intercollegiate rivalry is based in Maine.

The performance this winter of Colby's court quintet and of its fans has added prestige to sports during trying days for college athletics.

Post Office

Box 477, Waterville, Maine

From Overseas

• I have just received the December issue of the *Alumnus*. It was great to hear all the news of Colby and my old classmates. So far in the Japan-Korea area I haven't met any Colby men — only an occasional Bowdoin and Maine alumnus.

My wife and two children (John, age three, and Kathryn Ann, ten months) are living in Bremerton, Washington until I return from sea duty. I expect to settle down to a nice quiet dental practice in New England after this is over.

Thanks very much for the very efficient service in getting the *Alumnus* delivered to the corners of the world.

Dr. Philip J. Boyne, '46

We invite all men and women in the service to send in their new addresses so that we may send the "Alumnus" directly.

Willing to Help

• You will find me very willing to make my initial contribution to the Alumni Fund to cover your new policy of sending the magazine to me without charge. I also feel a keen responsibility, now that I am able, to making annual contributions to the Fund.

One cannot easily forget a most significant four years spent at Colby. I think of you all very often with the fondest memories and hope to be able to get back for a visit sometime this year.

Marvin Josolowitz, '48

Erratum

• It was interesting to read of my engagement in the latest issue of the *Alumnus*, particularly since you, at an earlier date last year, published an article concerning the wedding which took place in 1949. I might add that our son now five months old appreciated it as well.

Frankly I don't know where you got your information, for I didn't send it in.

John L. Lowell, '42

We are likewise mystified (and embarrassed). Apologies to the Lowells and young master Lowell.

Early Meeting of Boston Alumni

• In clearing out my desk, and throwing much away, I ran across the enclosed newspaper clipping reporting the twelfth annual meeting of the Boston Colby Alumni Association.

I think that was in 1887. If it were important the date could probably be verified by the secretary's record, if it exists. About ninety were present.

Mr. Augustus H. Kelley, '73, was president and I was secretary. The list of speakers was distinguished. I remember that Mr. Kelley and I, by a great effort and the pulling of many strings, were able to have as our principal speaker William Rainey Harper, president of Chicago University.

The names mentioned in this clipping may not mean anything to graduates of later years, but they were well known to my generation. Mr. Kelley was an outstanding school-master of Boston and as master of the high school in Belfast, Maine fitted me for college, 1875-1878. It occurs to me this may be of interest for the archives.

Robie G. Frye, '82

We are indebted to Mr. Frye for his contribution. It has been presented to the Miller Library for its ever growing and important collection of Colbiana. A quote from the clipping follows:

About ninety members of the Boston Alumni Association of Colby University attended the twelfth annual reunion at the Parker House last evening. At the business meeting the following-named officers were elected: president, Clarence E. Meloney, 1876; vice-president, Delwin A. Hamlin, 1871; secretary and treasurer, Charles F. Hall, 1875; executive committee, Colonel Francis S. Hesselstine, 1863, Joshua H. Millett, 1867, James Jenkins, 1878, Henry Dunning, 1882, Augustus H. Kelley, 1873, Edward C. Robinson, 1883, Justin K. Richardson, 1869, Robie G. Frye, 1882, Clarence P. Weston, 1873, Larkin Dunton, 1855, Reverend Charles B. Turner, 1882, and Allen P. Soule, 1879.

Photograph Credits — Page 7, *Waterville Sentinel*; page 9, *Saint Petersburg Independent*; page 18, *Akron Beacon Journal*; page 23, *Conner-Geddes*; page 24, *Hartford Courant*; page 29, *Providence Journal-Bulletin*.

The President's Page



All our alumni will want to see a *March of Time* feature called "Modern Arms and Free Men." The picture takes its title from the book of that name by Dr. Vannevar Bush, president of the Carnegie Institution of Washington. Colby men and women will be interested because the subject of the picture is a lecture by Dr. Bush and the place where the lecture is given is the campus at Mayflower Hill.

Dr. Bush who in looks and manner has a strong resemblance to the late great Will Rogers demonstrates before the camera that in addition to being a top-flight scientist he is a movie actor of the first rank. In the opening scenes he is shown in the Pentagon discussing with fellow scientists the news that the Russians have the atomic bomb. Then he receives a telephone call inviting him to lecture at Colby. He takes a plane, lands at the Waterville airport, and is then shown walking across the campus to the Keyes Building where he talks to a group of students in Averill Auditorium.

Soon after the lecture starts the voice of the *March of Time* takes over with a discussion of the part played by science in the last two wars and the scene shifts to photographs taken from the official Washington archives. We see the earliest war airplanes, the coming of the tank, and the development of the submarine. Then come pictures of the second war including some from captured German and Japanese sources. After about half an hour the camera returns to the Keyes Building where Dr. Bush finishes his lecture.

We are then taken to various familiar places in Waterville including the offices of the mayor, the Waterville *Morning Sentinel*, and W T V L's broadcasting studio. The townspeople, it seems, are agitating for a lecture of their own from the famous scientist. This is arranged and an audience gathers in what purports to be Waterville's town hall, though a keen Colby eye may detect in the building features that are familiar from college days. Again Dr. Bush lectures and again pictures from the war offices are opened for our inspection. The lecture this time includes a brief preview of some of the hazards we may expect a third conflict to bring. After the lecture there are questions. Then Dr. Bush is taken to the airport and when last seen is winging his way into the wild blue for Washington.

The entire picture takes about an hour and twenty minutes. About a fifth of this time is spent on shots of Waterville and Colby which I am sure our alumni will not want to miss.

Many who see it will undoubtedly feel as I did that the contrast between the peaceful scenes on Mayflower Hill and the devastation of war is hard to take. We must remember, however, that in presenting the contrast the picture merely records the actual world in which we live and enforces the moral that we have no right to live on a peaceful campus unless we are using all its resources in the fight against war. It is good to be able to report, also, that Dr. Bush treats the whole problem constructively, showing that if we keep up our courage and use our wits there is no reason why we should not find a way out of our present difficulties. The same note of confidence which has been so noteworthy in his recent pronouncements from Washington characterizes his Colby lecture. This is a second reason for urging our alumni to see the picture for themselves.

According to our latest information its first showing — a special one — was at the Carnegie Institution in Washington March 15th. As soon as we know where and when it will be exhibited from then on we will pass the word along.

J. S. Bixler



The Talk of the College

A PROVOCATIVE AND TIMELY observance of Religious Emphasis Week was arranged for February 25, 26, 27 under the supervision of Dr. Clifford Osborne, Colby's chaplain, and a student committee of the Inter-Faith Association, headed by Helen Leavitt Campbell, '51, of Grafton, Mass.

Ten religious leaders representing the Catholic, Jewish, and Protestant faiths gathered on the campus to live and talk with students. As far as possible these leaders were assigned to living quarters in dormitories and fraternities where they had an opportunity for individual and group conferences and discussions.

General theme of the program was the quotation, "The things that remain in a changing world," a subject which evoked widespread interest. According to Dr. Osborne the purpose of the week was "to give consideration to the contributions still to be made by the major faiths of America to our problem-ridden times; and to present the religious interpretation of life as having valid claim on the college campus of 1951."

SPIRALING COSTS strike just as severely at colleges as at any other phase of American life. Ask Colby's trustees — they have been faced with the problem for months.

In an effort to keep finances on an even keel the Board has found it necessary to increase rates in certain categories for 1951-52. Tuition will be raised from \$250 to \$275, extra courses from \$50 to \$55, and dormitory rental from \$90 to \$100. All of these apply to a single semester.

Anyone who has haunted supermarkets in an attempt to find food at reasonable prices will be amazed to learn there will be no advance in rates for meals — and this without any decrease in quantity or quality. On behalf of more than 1,000 hearty appetites on Mayflower Hill — a vote of thanks.

Summer Term Announced

Six years ago Colby abandoned its accelerated program, as did most other colleges, optimistic for the goals of peace. It had been instituted during the war years as a temporary measure.

This month, March 10, Colby again announced a Summer Term, established, as Dr. Bixler expressed it, "in answer to student demands and to give those who wished it a chance to acquire maximum college education before being called into military service."

Running concurrently on the campus with the Colby-Swarthmore Summer School of Languages, the Term will be divided into two sessions, June 25-August 4, and August 6-September 15. Though each school will have its own enrollment, faculty, and director, students in the Summer Term and in the language school will be permitted to interchange courses between the two.

Ernest C. Marriner, dean of the faculty, who will direct the Summer Term, points out that it will afford opportunity "for acceleration to regular students of Colby and of other colleges and will enable incoming freshmen to earn a full semester's credit and have one-eighth of their four year requirements completed before the opening of the college's regular fall session."

UPSALA COLLEGE of East Orange, New Jersey will make its first appearance against a Colby football team when gridiron relationships are instituted next fall. Upsala replaces City College of New York on the schedule October 6. Other games are, September 29, Amherst; October 13, Northeastern; 20, Trinity; 27, Bowdoin; November 3, Maine; 10, Bates. All will be played in Waterville except the Trinity and Bowdoin contests.

THE FAMOUS Thomas Hardy collection in the Rare Book Room of Miller Library was singled out for a special distinction early in January when Professor Carl Weber was asked to "revalue" the British author for the National Broadcasting Company's "University of the Air."

A series of such revaluations was begun last September when the *Saturday Review of Literature*, in conjunction with the NBC program, began publication of these revaluations. Professor Weber's article appeared in the January 6 issue of the *Review*.

THOSE OF us who saw the Colby basketball team turn in such spectacular and satisfying performances all during the winter had our pleasure increased even further by the class of 1950 and four alumni.

It was through their generosity that a huge new scoreboard flicked off the seconds and field goals as the Mules kept peppering the basket. Last year's graduating class provided the major funds.

The new unit is directly over the center of the floor and may be seen from both sides. It is "V" in shape with the time in numbers instead of by a rotating clock. Coach Lee Williams describes it as "the very latest and finest board that can be bought."

And to make things really top-notch Mike Loeb somewhere found the flags of all four Maine colleges which he hung over the court alongside the Stars and Stripes. It was a mighty impressive sight as the lights of the field-house dimmed prior to each game and a spotlight shone through the darkness on the American flag alone.



WOULD I QUALIFY? — John Lott, Army Air Force captain, answers this and other questions put to him by Colby men anxious to clarify their position in the manpower picture. Captain Lott and representatives from the Army, Navy, Coast Guard, Marines and Selective Service met with students in January to provide the very latest information on opportunities in the armed forces.

DEAN OF WOMEN Barbara Sherman had the opportunity to meet many alumni during her mid-western trip (January 21-February 5) visiting schools and interviewing candidates for admission.

Though space prevents reporting her trip in full some of the alumni highlights were — in Dayton, Ohio, a visit with Darrold E. Nickerson, '27; in Richmond, Indiana, a dinner party given by Mr. and Mrs. Claude Stinnett, '26, (Hope Chase, '26) at which Mr. and Mrs. Ellis Parmenter, '26, (Olive Soule, '26) attended; in Indianapolis, a dinner party with the Sigma Kappa National Association arranged by Mrs. William L. Drake Jr., (Priscilla Moldenke, '43); in Terre Haute, appointments arranged with local schools by Mr. and Mrs. John Kimpel, '48, (Frances Benner, '49); in Minneapolis, a dinner with Lew C. Church, '02; and in Chicago, a party given by Oscar Chute, '29, and Mrs. Chute.

Attending the Chicago gathering were Herbert Philbrook, '97, and his wife, Grace N. Philbrook, dean of

women at Colby in 1899, Mr. and Mrs. Philip B. Wysor (Marie C. Merrill, '42), Mrs. James W. Merritt (Helen Henry, '42), Dr. and Mrs. Walter B. Rideout, '38 (Jeannette Drisko, '39), Irving M. Malsch, '33, and Mrs. Malsch, Mrs. William E. Powers (Marion Drisko, '23), Eleanor Thomas Curtis, '40, Alvin Schwartz, '49, and Wesley Ross Doe, '44.

IT IMPRESSES us that Maine is well ahead of many other states in its program of civilian defense. Heading the organization is Brigadier General Spaulding Bisbee, '13, director of the Office of Maine Civil Defense and Public Safety. General Bisbee will discuss the Maine plan and civilian responsibility to it in the July *Alumnus*.

Colby is assuming a share of the work under the state set-up. The college has been assigned the radiological section of the mobile battalion for the Augusta area. Professor Sherwood Brown is its leader, assisted by other members of the science department — Lester Weeks, Winthrop Stanley, Webster Chester, and Gordon McKey.

THE TURN OF THE NEW YEAR brought with it a welcome opportunity for Colby faculty, staff and other employees. Beginning January 1 Federal Old Age and Survivors Insurance benefits were made available for the first time to employees of all non-profit institutions.

The employees were covered, however, only if the employer filed a certificate requesting coverage and if two-thirds or more of the college employees chose to participate. These qualifications were met at Colby. The details and impact of this step are explained by Arthur W. Seep, treasurer of the college.

"The Board of Trustees at its October meeting voted to file a certificate requesting coverage and assume the college's share of the taxes involved. During December more than eighty-three percent of the two hundred and seventy-two eligible employees elected to participate. First payroll deductions were made in January at the rate of one and one-half percent and were matched by a similar one and one-half percent contribution by the college. It is estimated that the cost to the college in the first year of the program will be in excess of eight thousand dollars and on the basis of present payrolls will more than double over the next twenty years.

"The college has assumed the financial burden of social security in addition to voluntary retirement programs previously in operation. For some years the members of the teaching staff above the rank of instructor have participated in the Teachers Insurance and Annuity retirement plan involving a five percent deduction from the individual's salary matched by a five percent contribution from the college. For the past several years, the non-academic employees of the college have been covered by a non-contributory plan providing annual benefits equivalent to one percent of the average of the final three years' salary, multiplied by the number of years of service, to those employees who have been with the college for ten or more years.

"Because of the prevailing low level of interest rates and the increased cost of living, these plans would not provide adequate retirement income. The adoption of the Federal program goes a long way towards improving the situation."

FOUR COLBY STUDENTS were delegates to the National Assembly of the Student Christian Association Movement December 27-January 2 at Miami University, Oxford, Ohio. . . . Dean Ernest Marriner has been re-appointed to the College Entrance Examination Board's Committee on Examinations. Another appointment by the Board is that of Paul Fullam, professor of history, as an examiner in social studies. . . A Colby junior, Raymond S. Grant, Jr., of Westfield, New Jersey, was co-chairman of the Student Christian Association Conference held February 23-25 in North Andover, Massachusetts.

Theme of the Winter Carnival was "Snowfall Fantasy" and as far as snow went it was just that — a "fantasy" — there was none. Athletic and social events, however, went ahead as scheduled. . . . Mary H. Marshall, former associate professor of English at Colby, presented an Averill lecture February 23 on "Shakespeare and the New Criticism." She is now on the faculty at Syracuse University.

Colby's chaplain, Clifford H. Osborne, is one of two representatives named by the Maine Council of Churches to the National Council of Churches, Division of Christian Education. . . Professor Sherwood Brown has been speaking before groups in the interests of civilian defense on "The Atom Bomb and Effects." . . "Korea" is a subject Donaldson Koons, professor of geology, has been asked to discuss frequently of late. He was born in Korea and received his secondary school education at Seoul Foreign School, Seoul. . . Wendell A. Ray, professor of chemistry, has been elected chairman of the Maine Section of the American Chemical Society for the year 1951.

This is Zeta Psi's one hundredth year at Colby. It was a century ago that Ezra Peck and John Barry, students at Williams College, travelled to Waterville to found the fifth Chapter of the fraternity. . . Archille H. Biron, instructor of modern languages, has been appointed chairman of the membership committee of the Maine Chapter of the American Association of Teachers of French.

The new Mellon organ in Lorimer Chapel has been the subject of an article in the January issue of *Etude* by Alexander McCurdy, its organ editor. McCurdy presented a masterful all-Bach

recital on the Colby instrument, December 5th. . . . The United Nations and World Affairs is the subject of the current Gabrielson lectures which are provided annually by a gift from Guy George Gabrielson, Colby trustee and chairman of the Republican National Committee.

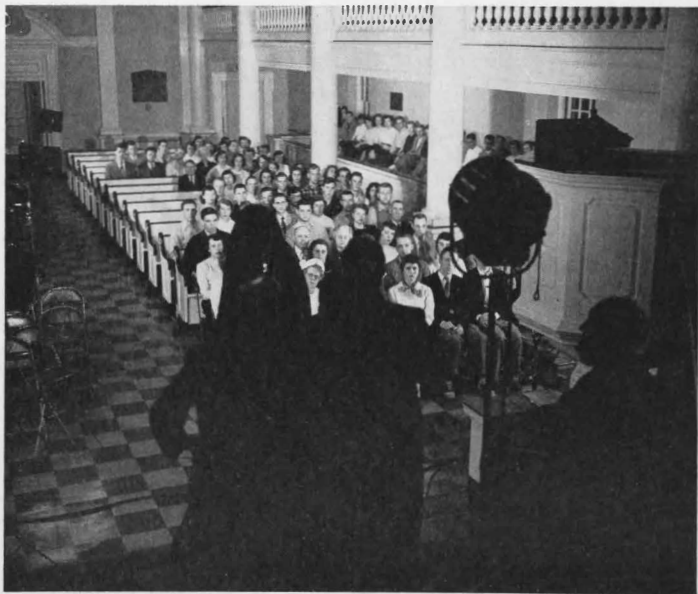
Two top sports authorities will lecture at Colby's coaching school this summer. Henry "Hank" Iba, coach of one of the nation's greatest basketball teams, Oklahoma A & M, will join Clarence "Chief" Boston, University of New Hampshire football mentor, in instructing at the school, June 14-16. . . . Martha Bixler, daughter of Dr. and Mrs. Bixler, and Arthur Harris were piano soloists at the winter concert of the Colby Community Symphony Orchestra. Both are graduate students at the Yale School of Music. Ermanno F. Comparetti, associate professor of music, conducted. . . .

Joseph Bishop, '35, assistant professor of business administration, will participate in a panel discussion on "Teaching Accounting to Non-business Majors" June 29 at M. I. T.

THE LORIMER CHAPEL made friends with an additional 4,034,169 individuals January 27 when its photograph appeared in the *Saturday Evening Post* under the magazine's feature, "Keeping Posted." Heading the brief article, "They Moved a College," the editors wrote,

You don't often hear of a distinguished old college deciding to abandon its campus and move to a new one, rebuilding everything from the group up. Colby College of Waterville, Maine, made that almost-fantastic decision back during the depression. A story of heartaches, courage and final success has been written into gracious new buildings and grounds on Mayflower Hill near Waterville.

Pictured is Lorimer Chapel, which was given by the late George Horace Lorimer, Colby '98 and long editor of the *Post*, to honor his father, the Rev. Dr. George Claude Lorimer, the eminent Baptist minister of Tremont Temple in Boston. Soon the graded grounds around the chapel will be clothed, as if they had always been that way, by seven-ton elms moved in from the nearby woods, and by other trees and a profusion of flowering shrubs. This mellowing touch is being applied by Mrs. Mary Curtis Zimbalist of Camden, Maine, and Philadelphia, a former trustee of Colby. She is doing it in memory of her father, Cyrus H. K. Curtis, founder of The Curtis Publishing Company.



FINAL SCENE — "March of Time" cameras returned to Mayflower Hill in February to take final scenes for the documentary film based on Dr. Vannevar Bush's "Modern Arms and Free Men." Students and townsfolk made up this audience in Lorimer Chapel. Release of the film nationally is expected this month.

DR. BIXLER has done considerable travelling since the middle of January and in the course of it filled several speaking engagements.

January 24 he talked at the Vesper Service of Cambridge School, Cambridge, Massachusetts; February 9 his topic was "Education and the Draft" before the congregation of Temple Beth El in Lowell, Massachusetts; two days later, February 11, he gave the Sunday sermon on "Lincoln's Great Decision" at the Unitarian Church, Germantown, Pennsylvania; and February 14 discussed "Conflict Between Head and Heart" before the faculty of arts and sciences at Florida State University, Tallahassee.

His March speaking engagements were highlighted on the 3rd by his luncheon address, "Reflections on the Art of Teaching," at the annual conference of the Secondary Education Board in New York City. On the 16th he spoke before the men's club of the State Street Congregational Church in Portland and on March 19 and 20 gave four talks in Keene, New Hampshire, at a meeting of the American Association of University Women, at an assembly at Keene High School, at Keene Teachers College, and at a meeting of an extension course on "The Conservation of Human Values" conducted by the state of New Hampshire.

Two important lecture appearances coming up in the future for Dr. Bixler are the famed Inglis Lecture before Harvard's Graduate School of Education March 28 and a trip overseas this summer to teach at the Salzburg Seminar in American Studies, Salzburg, Austria. Mrs. Bixler will accompany Colby's president who will present two lectures and one seminar a week during the session July 19-September 1. His subject will be "The Development of American Philosophy."

A Faith that Fulfills, written by Dr. Bixler, will be released by Harper Brothers the week of May 23. The book is based on the Ayer lectures he gave at Colgate-Rochester Divinity School in 1948.

A SPECIAL SEMINAR on the Far East, with emphasis on the period since 1945, is being presented this semester by a visiting lecturer from the Fletcher School of Law and Diplomacy at Tufts.

Allan Burnett Cole meets one afternoon each week with twenty selected students, majors in history and economics, and joins the group for supper before picking up afterwards for further discussion and individual conferences. Dr. Cole is lecturer on Far Eastern affairs at Tufts and author of several articles and books on Japan and Asia.

IN ACCORDANCE with the recent trends in pre-medical education and the recommendations of the medical schools, Colby, in the future, will not insist on a prescribed curriculum called the pre-medical major for students intending to enter medical school.

Instead such a student will choose a major in any field that he wishes, making certain only that his program contains the few subjects prescribed by the medical schools for admission.

A pre-medical committee will be established to make recommendations on behalf of the college to the medical schools as to candidates for admission and to advise students concerning the peculiar demands of individual medical schools.

In accordance with established Colby policy, a professor in the student's

selected major field will be his academic advisor, but in addition the members of the Committee on Medical Preparation will advise him concerning preparation for and admission into graduate schools of medicine.

FOR THE FOURTH consecutive year Colby-Swarthmore Summer School of Languages will be in session on Mayflower Hill. The dates—June 21 to August 7.

Studies are at three levels—elementary, intermediate, and advanced with offerings in French, German, Russian or Spanish.

Professor John F. McCoy, director of the school, and his faculty approach the study of foreign languages in an entirely different vein. It might well be called a "subtle approach" for students make use of foreign tongues, almost without realizing it, in every phase of their summer life, social parties, group singing, language tables at meals, outings, and in all relationships, student-to-student or instructor-to-student.

One undergraduate called this "painless education." It certainly is the natural way.



LIGHTS ON — Colby's new outdoor hockey rink next to the Mayflower Hill fieldhouse has been equipped with floodlights for night hockey. Head coach Nels Corey holds the puck in a face-off of a practice scrimmage.

Mule Teams Have Fine Winter . . .

Basketball Team Takes State Title; Icemen Split with Bowdoin

By Alan Mirken, '51

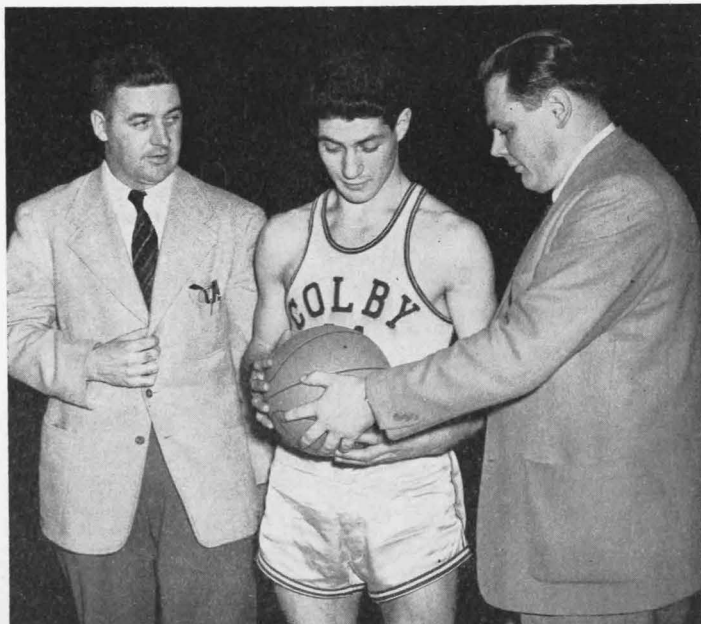
PRIDE OF THE CAMPUS is Lee Williams' varsity basketball crew who rolled up a 22-9 record, captured the State title, and made its way into the Northern finals of the New England Conference Basketball Tournament before losing to a snappy Boston College quintet.

After juggling his lineup at the start of the season, Williams hit the jackpot in the University of Buffalo game, captured by the Mules, 76-56, January 1st. The hoopsters went on to win 14 straight before dropping an overtime heartbreaker to Saint Anselm's February 27th at Boston Gardens.

Among its achievements, Colby annexed the State crown by bombing the defending champion, the University of Maine, 101-63, the highest any Mule quintet has ever scored. Twelve individual player records were broken during the season by senior Teddy Shiro and sophomore Ted Lallier while the team chalked up 20 new all-time marks. Shiro received All-American mention and was chosen All-New England in several polls.

Fortunate in having double-figure scorers in all his starters, Williams' greatest concern was improving the defensive play. The Mules had an off night in their series opener against scrappy Bowdoin, but their other seven losses can be attributed directly to defensive weakness. 75 (in overtime), 73, and 74 points run up against the Mules in their three Boston games by Saint Anselm's, Tufts and Northeastern illustrate the enormity of the problem. As far as Colby was concerned the big question was not, "Could Colby score?" but "Could Colby stop the opposition from scoring?"

With the exception of Shiro, a Waterville boy, the Colby starting five will all be back for another year—Uncle Sam permitting. Ted Lallier, holder of the college's individual scoring record for a single game, Frank Piacentini, only player in Colby's history to have scored over 300 points as a sophomore, and Ro Nagle, one of the nation's top rebound artists among small colleges, are all sophomores. Play-



ONE THOUSAND POINTS — Ted Shiro scored the 1000th point of his three years as a varsity player during the Providence game — won by Colby 77-64. Cameramen caught Shiro immediately after his basket as play was momentarily held up while Vic Cuddy, Providence College coach (left), and Lee Williams offered congratulations. Shiro's three season total was 1164.

maker Johnny Jabar, another Waterville boy, is a junior. Jabar leads the team in percentage of shots made—he has hit for a terrific mark of 44 per cent this season.

On the basis of its outstanding record, the team was invited to participate in the N. A. I. B. small college tournament, but voted to turn down the bid in order to perform before the home fans in the New England tournament.

Before a packed house the Mules tripped Boston University in the tournament opener 78-74. An injury to Jabar's left hand early in the game handicapped the Williamsmen, but they managed to hold the lead all the way despite the valiant efforts of the Terriers.

Perfect passing, combined with a 50 per cent field goal average, gave Bos-

ton College a 79-64 victory the next night over the home five in the tournament finals. The loss was the first for the Mules on the Mayflower Hill court since February 25, 1950, when they lost to the same Eagle quintet 80-60.

The Tournament was a great success and Athletic Director "Mike" Loebbs was largely responsible. He worked tirelessly with his staff in an effort to establish Colby as a permanent contender for the playoff site.

Following the annual winter sports banquet, Coach Williams left for the Minneapolis meeting of the National Basketball Coaches Association where he was chairman of the officials committee. The rest of the Mule baskeeters turned in their uniforms and headed for spring sports.



NEW FOOTBALL COACH — Nels Corey, successor to Walt Holmer.

IT CAME AS NO SURPRISE to followers of Colby's gridiron fortunes to learn, following Walt Holmer's resignation, that Nels Corey had been named head coach of football. He was the logical choice as anyone who has watched his tireless, thorough drilling can attest.

Corey, former all-Maine star at Bowdoin, is an aggressive mentor not averse to giving his athletes demonstrations of the proper way to throw a block or tackle. The 1950 line, under his tutelage, held its first four opponents to nineteen points, before succumbing to injuries and the weightier forces of Bowdoin and Maine.

The major hitch Nels faces in taking over his new assignment is the possible shortage of manpower next fall. This may plague him in his first year as driver of the Mule Train. Only eight of last season's varsity and freshman are military veterans and one of these, fullback Ray Billington, has already re-enlisted in the Navy.

"A decision by the Maine colleges to permit freshmen to compete in varsity sports would be a big help," Corey has said, but whether this comes through or not there is solace in the fact that all colleges are facing basically the same problem. Given an equal break numerically, and in talent, Corey will field a scrapping outfit that is bound to bring distinction and, in time, a state series flag to Mayflower Hill.

THOUGH HAMPERED by poor ice throughout the winter, Colby's hockey crew wound up their campaign under Coach Nels Corey with a remarkable 5-4-2 record. An impressive 4-3 overtime defeat of Tufts February 26th resulted in the Mules receiving a bid to the New England playoffs. Lack of ice conditions for practice, however, forced the team to decline.

Highlight of the winter was a 7-3 trouncing of Bowdoin, a sextet that previously had dealt the Coreymen a 4-2 blow.

The frosh pucksters, under Coach Wes Hayes, a Colby junior, came through with three victories and lost only to a talented Bowdoin freshman, 3-1.

Not to be overlooked are the activities of Colby's trackmen and skiers.

The relay team placed third among four at the Knights of Columbus games in Boston, and second to Holy Cross in a similar race at the B. A. A.

Highlight of the ski season was Geof Lyford's jumping victory in the Eastern Intercollegiate Ski Association meet at Lyndonville, Vermont. Despite plans for many ski events on the Outing Club slopes, poor snow conditions forced their cancellation and Colby's skiers had to head elsewhere for competition.

A SEVEN GAME Southern trip beginning March 26 against Bolling Air Force Base should enable Eddie Roundy's baseball club to work into condition for the highly competitive State Series ahead. Last year the Roundymen were forced to forego a trip South, and consequently were left at the post when the season started. Inclement weather prohibited the Mules from working outdoors until their opener, and they wound up behind Bowdoin, Bates, and Maine in the conference race.

The outlook is much brighter for the coming campaign. Roundy, starting his twenty-seventh year as coach, will have a veteran mound staff headed by three seniors. Five sophomores and two juniors are expected to round out the hurlers.

Biggest problem facing the veteran mentor is selecting a glue-fingered third baseman from seven candidates. The hot corner has been a weak spot for three straight years.

A heavy hitting club, the Mules should be right up there if Roundy can solve his infield puzzle.

WINTER SPORTS RESULTS

Varsity Basketball

Farmington State	58-44
Farmington State*	85-36
Bowdoin	47-56
Bates	70-50
Maine*	56-49
Brown University	61-58
Providence College	62-76
University of Connecticut	61-66
University of Rochester	64-73
University of Akron	67-68
Bowling Green University (Ohio)	53-79
University of Buffalo	76-56
Wesleyan University*	74-63
Springfield College*	69-58
Bowdoin*	73-59
Gorham State*	93-63
Maine	85-57
Bates*	89-60
Boston University*	82-64
Providence College*	77-64
University of New Hampshire	85-64
Bowdoin	81-72
M. I. T.*	73-55
Maine*	101-63
Bates	61-31
St. Anselms	70-75
Tufts	72-73
Northeastern University	81-74
Boston University (T)*	78-74
Boston College (T)*	64-79

Varsity Hockey

Amherst	5- 5
New Hampshire*	7- 5
Norwich*	1- 3
Tufts*	6- 4
Bowdoin	2- 4
Univ. of Maine Independents*	6- 5
Middlebury	5-10
Norwich	3- 5
Bowdoin	7- 3
Bates Mfg. Co.	4- 3
Tufts	(overtime) 4- 3

Freshman Basketball

Portland Boys Club*	59-54
Coburn Classical Institute*	70-63
Husson College*	63-47
Aroostook Normal School*	70-52
Higgins Classical Institute	71-56
Maine Central Institute*	73-51
Hebron Academy*	64-47
Bates Freshmen*	89-65
Portland University*	86-47
Portland Junior College*	69-37
Maine Central Institute	77-64
Coburn Classical Institute*	58-43
Bates Freshmen	86-66
Higgins Classical Institute	82-63

Freshman Hockey

Waterville High School*	2-1
Kents Hill	13-5
Kents Hill*	10-2
Bowdoin Freshmen	1-3

(T) New England Tournament game

* At Waterville

News From Colby Alumni Clubs

THE COLBY CLUB of St. Petersburg, Florida met February 17 at the Hotel Detroit for a luncheon meeting in honor of Dr. and Mrs. Bixler. Donald E. Putnam, '16, as president, introduced Dr. Bixler, who gave the Florida group many interesting highlights concerning the activities, scholastic and extra-curricula, on the new campus on Mayflower Hill. He also outlined plans for the future, particularly for the building program and the many problems which have now arisen in these uncertain times.

Among those attending were: Donald E. Putnam, '16, and Mrs. Putnam; Edwin A. Russell, '15, and Mrs. Russell; Ralph E. Nash, '11, and Mrs. Nash (Margaret Buswell, '12); Effie Lowe Patch, '05; Mary E. Prescott, '34, and Mr. Prescott; Varney A. Putnam, '99; Nellie W. Hatch, '03, and Mr. Hatch; Nella M. Merrick, '00; Agnes P. Bishop, '00; Emma A. Fountain, '95; Myrtle F. Bickmore, '93, and Mr. Bickmore; Hazel Young Grinnell, '14; Leta Young, '11; Ulande Hoxie Ulartin, '99; Betty M. Beamish, '49; Alice Smith Horne, '03; Edith Gray Files, '02, and Mr. Files.

Also present were these good Colby friends: Mr. and Mrs. C. A. Greenleaf; Mrs. C. L. Walworth; Rev. and Mrs. Ernest T. Marble; Mrs. W. J. Thayer; Josef F. Nelson; Herbert E. Gage; Mrs. Edwin B. Frost; Ruby Smith Baker; Mr. and Mrs. T. M. Goodall; and Mr. and Mrs. William E. Barrows.

APPROXIMATELY forty Colby alumni, classes 1945 to 1950, met at the Little Venice restaurant, Greenwich

Village, January 30, to enjoy a spaghetti and meatball dinner and reminisce about Colby days.

Those present included Anne Booth, '48, Marcia Friedman, '48, Alice Crooks, '49, Peggy Fratano, '49, Joan Crawley, '48, Deanie

SLIGHTLY OFF KEY

The Colby Varsity Show, 1951 edition, is about to take to the road. Entitled "Slightly Off Key", the musical had a successful debut in Waterville earlier this month and now moves on to Boston and Providence.

The student production will play at John Hancock Hall, Boston, March 27, before moving on to Providence the next night and the Rhode Island School of Design auditorium. George Jones, '40, is handling the arrangements in Boston; J. Drisko Allen, '29, in Providence.

Whitcomb, '49, Barbara Starbuck, '49, Jean Beauchamp, '49, David Lynch, '49, Ray Webster, '48, Loring Buzzell, '48, Mary Burrison, '48, Dick Rabner, '48, Dick Durso, '46, and Mrs. Durso, Joseph Bowler, '48, Betty Coombs, '48, Alice-Marie March, '48, Bud Schlesinger, '47, Jodie Schieber, '47, Mr. and Mrs. Robert Nardozi, '49 (Jean Chickering, '50), Joseph Spina, '48, and Mrs. Spina, Skippy Rubin, '49, Douglas Borton, '48, Emily Gardell Burke, '47, Joanne Bouton, '47, Cloyd Aarseth, '46, Jerry Frank, '50, Lee Clayton,

'48, Barbara Van Every Bosworth, '49, and Mr. Bosworth, Dick Fisch, '49, Bert Krumholz, '48, Sandy Levine, '48, Courtney Simpson, '46, Dennis Dunn, '48, Bill Pierce, '27, (President) and Dr. Nathaniel Weg, '17.

COLBY ALUMNAE OF PORTLAND entertained Bates and University of Maine alumnae at a tea January 20. Mary Robinson Taylor, '41, was program chairman. Guests were welcomed by Mrs. Arlene Ringrose Brown, '23, club president.

Other alumnae taking part were Ruth Blake Thompson, '40, who presented a monologue skit; Ethel Harmon Barta, '24, and Dorothy Gordon, '24, who poured; and Josephine Bodurtha, '38, in charge of the guest book. Over 75 attended from the three colleges.

February 27 the club was entertained by movies of France shown by Miss Myra Dolley, '19, who filmed them during her trip to Europe last summer. A food sale was held March 3 and a rummage sale is planned for May 12.

A MEETING OF ALUMNI in the Farmington area was held February 1. Dr. Bixler, Coach Lee Williams, and Professor Paul Fullam all spoke.

Arrangements were handled by Pete Mills, '34, George Toothaker, '38, and Mrs. Margaret Raymond Small, '34.



ALUMNI IN ST. PETERSBURG — At left, Dr. Bixler is seated with Colby alumni who arranged for the St. Petersburg meeting. Left to right (front): Mrs. John C. Prescott (Mary Hodgdon, '34), publicity chairman, Dr. Bixler, Mrs. W. F. Patch (Effie Lowe, '05), secretary-treasurer; left to right (back): Donald E. Putnam, '16, club president, Ralph E. Nash, '11, founder, Edwin A. Russell, '15, vice president. At right, the many alumni attending the Florida meeting.

Support the Fund!

Recently I read an article in a newspaper about a prominent New England college. The headlines proclaimed the fact that the Alumni Fund had made it possible for the college to operate in the black the preceding year. One sensed in reading it the pride the school authorities had in announcing this as a demonstration of the loyalty of the alumni.

For several years now contributors to the Colby Alumni Fund have been making it possible for our college to operate in the black. Each one of you, whether your contribution was large or small, has a right to a justifiable feeling of pride for your part in the above.

The story of the Alumni Fund is truly a story of accomplishment. It annually brings in enough money to finance the operations of the Alumni Office, with its ever expanding services. From it has been built a Student Loan Fund that is available to Colby boys and girls in need of financial help. As Chairman of the Alumni Council it gives me great satisfaction to be able to remind you that it is the same Alumni Fund that makes possible this year's new policy of sending to you without charge the *Alumnus*. And each year a considerable amount of money has been left over for the college to use as it sees fit.

There have been many critical years



FUND CHAIRMAN — Carlton D. Brown, '33, heads the 1951 Alumni Fund.

in the history of Colby. Since the courageous decision was made to move to Mayflower Hill it has been largely a story of one critical year following another. This year is no exception. The ever increasing costs of operation, the vital need of improving faculty salaries, the effect of the draft are only some of the factors complicating the financial status of the college.

If you have not read the words of Carlton Brown, the new Chairman of the Alumni Fund, I would urge you to

do so. You will find his inspiring message on the inside cover. To his splendid appeal I would simply add this. Here is our opportunity to demonstrate faith and loyalty in Colby and what it stands for. Let each one of us give as generously as possible.

Wm. A. Macomber

Chairman, Colby Alumni Council.

FEBRUARY 9TH at the Eliot Restaurant the regular meeting of the Boston Colby Club was attended by more than forty members and guests. After dinner, President Ellis Mott, '39, introduced the guest speaker of the evening, Frederick A. Pottle, '17, Sterling Professor of English Literature at Yale University, who spoke on Boswell's *London Journal*.

Professor Pottle traced the fascinating steps in the sequence by which the manuscripts were finally acquired by Yale University and gave a detailed account of the process by which they were being edited at the "Boswell factory" in the Sterling Memorial Library at Yale. Boswell, he asserted, already well established in the field of literature as a biographer, was now emerging in another dimension—that of journalist. The first volume containing an intimate record of Boswell's activities in

London is especially important for two reasons: first, it is an analysis of the mind of a young man of family trying to free himself from parental dominance; and second, it depicts the struggle of a young man of literary ability in his efforts to determine the medium in which he should write. Throughout the *London Journal* Boswell reveals his own great zest for life and in his realistic, undistorted commentary catches eighteenth-century English living in its common aspects. Professor Pottle described the order in which McGraw-Hill is planning to publish the remaining manuscripts which are now at Yale. He estimated that it will take twenty years to edit all of the manuscripts in thorough and scholarly editions.

The Boston Colby Club was extremely fortunate and very appreciative of the privilege of having so distin-

guished a scholar and international authority on Boswell as its speaker at the February meeting.

The speaker at the January meeting was Dwight E. Sargent, '39, chief editorial writer of the *Portland Press Herald*, who was recently awarded a Nieman Fellowship at Harvard.

Nearly two hundred attended a meeting held at the Union Oyster House March 1.

The following officers were elected: president, C. Evan Johnson, '27; vice president, Hiram F. Moody, '23; secretary-treasurer, Gordon B. Jones, '40; alumni council representative, D. Ray Holt, '21; and executive committee, Morton M. Goldfine, '37, Albert J. Thiel, '28, and Carl R. MacPherson, '26.

Franklin Norvish, '34,
Secretary.

Report on the COLBY 1950 ALUMNI FUND

1880
Minnie Mathews Mann
1882
Robie G. Frye (R)
Fred N. Fletcher (R)
No. in Class 2
Contributors 2 (100%)
Amount \$75

1883
Samuel B. Shepard
1884
John E. Cummings (R)
Helen A. Bragg (R)
Dudley Holman (R)
Frank B. Hubbard (R)
John C. Keith (R)
*Edward F. Robinson (R)
No. in Class 6
Contributors 6 (100%)
Amount \$346

1885
Bertha L. Soule
William H. Snyder (R)
No. in Class 3
Contributors 2 (67%)
Amount \$17

1886
Albert M. Richardson (R)
Thomas J. Ramsdell (R)
Julia E. Winslow (R)
No. in Class 3
Contributors 3 (100%)
Amount \$33

1887
Harvey D. Eaton (R)
Nathaniel H. Crosby (R)
Walter B. Farr
Elmer E. Parmenter (R)
Charles C. Richardson (R)
William F. Watson
No. in Class 8
Contributors 6 (75%)
Amount \$160

1888
Albert F. Drummond (R)
William M. Cole (R)
Edith Merrill Hurd (R)
No. in Class 9
Contributors 3 (33%)
Amount \$55

1889
Edward F. Stevens (R)
Minnie Bunker
H. Everett Farnham (R)
Harrie M. Parmenter (R)
*Charles H. Pepper (R)
Henry B. Woods
No. in Class 6
Contributors 6 (100%)
Amount \$105

1890
Charles W. Spencer (R)
*William R. Curtis
Mary N. McClure
Antha Knowlton Miller
Merton L. Miller
Melvin M. Smith
William L. Soule (R)
No. in Class 11
Contributors 7 (64%)
Amount \$382.50

1891
Franklin W. Johnson (R)
Ellie Dascomb Adams
Alvah H. Chipman (R)
Mary Morrill Ilsley
Edwin C. Teague (R)
No. in Class 11
Contributors 5 (45%)
Amount \$525

1892
Frank B. Nichols (R)
R. Adelle Gilpatrick (R)
Dora Knight Andrews
Charles P. Barnes
Winfred N. Donovan (R)
Stephen Stark (R)
No. in Class 13
Contributors 6 (46%)
Amount \$100

CONTRIBUTORS

— Class agent names are printed in bold.
— An asterisk indicates contributor is deceased.
— An (R) indicates contributions for 10 consecutive years.

1893
Albert Robinson (R)
Lora Cummings Neal (R)
In memory of
Albert H. Bickmore
Denils E. Bowman (R)
Helen Beede Ereneman (R)
Leon O. Glover (R)
Lizzie T. Hussey
Eva Taylor MacKenzie (R)
Robert N. Millett (R)
Lucia H. Morrill (R)
In memory of
Edgar P. Neal
Joseph F. Shepherd
Katherine Berry Tilton
Cyrus F. Stimson
In memory of
J. F. Wood
No. in Class 15
Contributors 15 (100%)
Amount \$113

1894
Melville C. Freeman
Annie Richardson Barnes
Clara P. Morrill (R)
Frances H. Morrill (R)
Grace M. Reed (R)
Clarence E. Tupper
William B. Tutthill (R)
No. in Class 26
Contributors 7 (27%)
Amount \$85

1895
Archer Jordan (R)
Emma A. Fountain (R)
Lila Harden Hersey (R)
M. Blanche Lane
Hugh D. McLellan
Carrie M. True (R)
Annie M. Waite (R)
William L. Waters (R)
No. in Class 13
Contributors 8 (62%)
Amount \$190

1896
H. Warren Foss (R)
Florence E. Dunn (R)
Myrtice Cheney Berry (R)
Albert S. Cole
Edna Moffatt Collins (R)
Charles E. Dow
Henry W. Dunn (R)
Herbert E. Foster (R)
Olive Robbins Haviland (R)
Caro L. Hoxie
Carleton E. Hutchinson
John B. Merrill (R)
Gertrude Ilsley Padelford
Eudel Pratt Peakes
Herbert N. Pratt (R)
Christine Fey Tooker
Harry T. Watkins
No. in Class 26
Contributors 17 (65%)
Amount \$972

1897
Grace Gatchell (R)
Alice Nye Fite (R)
Minnie Corson Garland (R)
Nina Vose Greeley (R)
Helen Hanscom Hill
Harriet F. Holmes (R)
Marion Parker Hubbard

1898
Elmira Nelson Jones
Albert R. Keith (R)
Lena Tozier Kenrick (R)
Edith M. Larrabee (R)
Tena McCallum
Florence L. Morrill
Edward S. Osborne (R)
Herbert S. Philbrick (R)
Grace Goddard Pierce

Ruth Stevens Reed
Fannie Parker Wing (R)
No. in Class 28
Contributors 18 (64%)
Amount \$430

1899
T. Raymond Pierce (R)
Lena Bessey (R)
Raymond H. Cook
Fred G. Getchell (R)
*Myra Marvell Getchell (R)
Everett C. Herrick (R)
Arad E. Linscott (R)
John E. Nelson (R)
Elsie Reid Pike
Fred P. H. Pike (R)
Mary Evans Stevenson
Ina Taylor Stinneford
Charles W. Wigcutt (R)
*Charles M. Woodman (R)
No. in Class 35
Contributors 14 (40%)
Amount \$178

1899
Ambrose B. Warren (R)
Edith Corson Bowman
Jenn C. M. Duck
Josephine Ward Dolliver
Harold L. Hanson
Henry Hoyt
Bertha Weston Hutchinson
Ernest H. Maling (R)
George A. Martin (R)
Maude Hoxie Martin (R)
Etta Purington Parsons
Charles E. G. Shannon
Henry R. Spencer
William O. Stevens
Helene Bowman Thompson
(R)
Harry S. Vose
Rachel Foster Whitman (R)
Mary L. Wilbur
Elmer Warren (son of Ambrose Warren)
No. in Class 31
Contributors 19 (61%)
Amount \$334

1900
Frank J. Severy (R)
Ethel M. Russell (R)
Louise M. Benson (R)
Ernest T. Cushman
Mary Philbrook Dunning
Simon P. Hedman
Stella Jones Hill (R)
Grace B. Holden
Mary Lemont Ingraham
Fred F. Lawrence (R)
Marion Osborne Matheson
(R)
Nella M. Merrick
In memory of
Benjamin E. Philbrook
Mary S. Small (R)
Charles F. Towne (R)
Gertrude Pike Towne (R)
Lu Ames Ventres
Ernest H. Vupper
No. in Class 22
Contributors 18 (82%)
Amount \$238

1901
Alexander M. Blackburn
(R)
*Mary Blaisdell Belknap
*Robert A. Bakeman
Jennie W. Cummings (R)
William F. Hale
Frances Simmons Houghton
Grace Farrar Linscott (R)
George A. Marsh (R)
Rhena Clark Marsh (R)

Edgar B. Putnam (R)
Ralph W. Richards
Charles F. T. Seaverns (R)
Lucinda Peacock Smith
William H. Sturtevant
Margaret Williams Thomas
Ernest E. Ventres
Mary Bragg Weston (R)
No. in Class 26
Contributors 17 (65%)
Amount \$366.50

1902
Harry E. Pratt (R)
Edith Williams Small (R)
Margaret Merrill Ash
Florence Wilkins Bragdon
(R)
Lew C. Church (R)
Augusta Colby
Edna Owen Douglas (R)
Grace Bicknell Eisenwiter
(R)

William Farwell
Bertha Thayer Flint
Lois Meserve Flye (R)
Julius H. B. Fogg (R)
Angier L. Goodwin
Adelbert O. Jones
Allana Small Krieger
Vera Nash Locke
Nellie Lovering Rockwood
(R)
Blanche Parkman Pratt
(R)
Charles A. Richardson
George S. Stevenson
Marjorie Elder Stevenson
(R)
Ossian F. Taylor
Linwood L. Workman (R)
No. in Class 40
Contributors 23 (58%)
Amount \$266

1903
William H. Hawes
Bertha Wiley Chase (R)
Harold C. Arey
In memory of
June Dunn Bakeman
Grace Warren Athley
Edith C. Bicknell
Florence Dixon
Mildred Jenks Dudley
Walter L. Glover
Florence Perry Hahn
Martha B. Hopkins (R)
Alice Smith Horne
Caleb A. Lewis (R)
In memory of
Alice Pierce Norris
Eva Johnson Patten
Elydia Foss Shipman
Lois Hoxie Smith
Leon C. Staples (R)
E. May Tolman
Allison M. Watts
No. in Class 31
Contributors 20 (65%)
Amount \$141

1904
Carl R. Bryant
Eva Clement Ames
Vernon S. Ames (R)
Edith Watkins Chester
Allen Clark
Jennie M. Cochrane (R)
Nellie T. Davis
Eunice Mower Beale
Ruby Carver Emerson
Doris P. Gallert
Bertha Long Hanscom
Frank H. Leighton (R)
Harriet Cleveland Nason
John A. Partridge (R)

Carroll N. Perkins (R)
George E. Tolman (R)
Bertha Whittemore
Whittier
Edward B. Winslow
No. in Class 39
Contributors 18 (46%)
Amount \$217

1905
Cecil W. Clark (R)
S. Ernestine Davis
David K. Arey (R)
Stephen C. Bear (R)
Alona Nicholson Bean
Ethel Higgins Beck
William R. Cook
Elizabeth Blaisdell Dolan
Arthur L. Field (R)
Clarence N. Flood (R)
Eleanor Stone Goodwin
Walter J. Hammond (R)
May L. Harvey (R)
William Hoyt
Henry N. Jones
Hersey R. Keane (R)
Ida P. Keen
Rose Richardson Kelley
(R)
Effie Lowe Patch
John B. Pugsley
Glenn W. Starkey (R)
In memory of
Blanche V. Wilber
Carrie Allen Wood
No. in Class 39
Contributors 22 (56%)
Amount \$441

1906
[Arthur G. Robinson (R)
Anna M. Boynton (R)
Adelbert Bowdoin (R)
Charles P. Chipman
John W. Combs
Edwin P. Craig
Louise Allen Peenan
Carl R. Kennison (R)
Elliott C. Lincoln
Ella R. Maxcey (R)
Charles C. Meader (R)
Elaine Wilson Oxnard (R)
Beulah F. Purington (R)
Ralph L. Reynolds (R)
Cora Farwell Sherwood
Edith Kennison Stone
W. H. S. Stevens
Susan H. Weston
Nettie Fuller Young
No. in Class 39
Contributors 19 (49%)
Amount \$312

1907
Roscoe C. Emery
*Grace Stetson Grant
Myron E. Berry
Walter E. Craig
Elbridge G. Davis
Caro Beverage Faulkner
Burr F. Jones (R)
Alma Morrisette
McPartland
Marian Learned Meader
(R)

1908
Charles W. Bradlee (R)
Florence King Gould
John F. Casey
Helen L. Cochrane (R)
Myrta Little Davies
Helen F. Dickinson
Charles C. Dwyer
Caroline Noyes Ervin
Nina Holmes Herschleb
V. Ray Jones
In memory of
Ernest W. Loane

HONOR CLASSES

Number Contributing	
1949	(Sidney B. McKeen) 65 (Miss Martha Jackson)
1928	(E. Richard Drummond) 62 (Ava Dodge Barton)
1921	(Bernard E. Esters) 59 (Elizabeth B. Carey)
1925	(Raymond L. Grant) 56 (Louise Cates Clark)
1929	(David F. Kronquist) 56
1927	(William A. Macomber) 48 (Marguerite Chase Macomber)
1930	(Ralph A. Pape) 48 (Helen Chase Pardey)
1931	(Howard L. Ferguson) 48 (Maxine Foster Foster)
1914	(Frank S. Carpenter) 44 (Clara Collins Piper)
1926	(Harry B. Thomas) 44 (Pauline Lunn Chamberlin)
1922	(Clyde E. Russell) 42 (Miss Catherine D. Larrabee)
1923	(Ernest R. Werme) 42 (Arline Ringrose Brown)
Per cent of Contributors	
1882	(Robie G. Frye) 100
1884	(John E. Cummings) 100
1886	(Albert M. Richardson) 100
1889	(Edward F. Stevens) 100
1893	(Albert Robinson) 100 (Lora Cummings Neal)
1900	(Frank J. Severy) 82 (Miss Ethel M. Russell)
1887	(Harvey D. Eaton) 75
1885	(Miss Bertha L. Soule) 67
1896	(H. Warren Foss) 65
In Amount Contributed	
1896	(H. Warren Foss) \$972.00 (Miss Florence E. Dunn)
1914	(Frank S. Carpenter) 710.00 (Clara Collins Piper)
1926	(Harry B. Thomas) 651.50 (Pauline Lunn Chamberlin)
1921	(Bernard E. Esters) 646.00 (Miss Elizabeth B. Carey)
1891	(Franklin W. Johnson) 525.00
1919	(Burton E. Small) 519.00 (Mary Foss Ogden)
1932	(Edwin W. Maddocks) 478.00 (Phyllis C. Weston)
1917	(Edward D. Cawley) 476.00 (Miss Selma Koehler)
1925	(Raymond L. Grant) 474.00 (Louise Cates Clark)

I. Ross McCombe	
Harold N. Mitchell	
Mollie Pearce Putnam	
Ninetta M. Runnals (R)	
Helen Campbell Shaw	
Malcolm D. Smith	
Mary Abbott Stobie	
Agnes Walker Taylor	
Annie Harthorn Wheeler	
No. in Class	60
Contributors	20 (33%)
Amount	\$353.50
1909	
Thomas J. Seaton	
Maud Eaton Wade	
Helen E. Adams (R)	
Eugene F. Allen	
Joseph Chandler	
Clark D. Chapman (R)	
Jeanette S. Crowell	
Clara A. Eastman	
Olive Green Fairclough	
Bertha Bryant Farwell	
Bianche Emery Folsom	
Jane Philbrick Jones	
Martha Bryant Kelly	
Harold W. Kimball (R)	
Marion Wadsworth Long	
Mabelle Habson Mayo (R)	
Edwin W. Merrill	
Agrandee Record Pullen	
Austin Shaw	
Ethel Knowlton Siedhof	
Ella MacBurnie Stacy	
Florence Freeland Totman	
Leo S. Trask	
Abbie Hague Warren	
Nathaniel E. Wheeler	
Sarah B. Young (R)	
No. in Class	55
Contributors	26 (47%)
Amount	\$300.50
1910	
Ralph N. Good (R)	
Mary Donald Deans (R)	
Alton D. Blake	
Merle Crowell (R)	
Emma Berry Delahanty	
Nathan H. Garrick	
Leona Achorn Gillis	
Jennie Grindle	
J. Pauline Herring	
Ruth Wood Hebner	
Frederick T. Hill (R)	
Cassilena Perry Hitchcock	
Lillian L. D. Lowell (R)	
Thomas L. Mahany	
Eleanor Creech Marriner (R)	
John M. Maxwell	
Henry B. Moor (R)	
Ira W. Richardson (R)	
Helen V. Robinson (R)	
John A. Tidd (R)	
No. in Class	46
Contributors	20 (43%)
Amount	\$391.50
1911	
Albion W. Blake (R)	
Rose Carver Tilley	
Robert L. Ervin	
Isaac Higginbotham (R)	
Rose Pillsbury LeBlanc	
Ralph E. Nash (R)	
Nathan R. Patterson (R)	
Mary Ingram Quinn	
Margaret Fielden Rogers (R)	
Louise A. Ross (R)	
*Edward G. Stacy	
Beulah E. Withee (R)	
No. in Class	51
Contributors	12 (24%)
Amount	\$414.50
1912	
Ernest H. Cole (R)	
Ruth Hamilton Whittemore	
John A. Bagnell (R)	
Mildred Ralph Bowler (R)	
Albert E. C. Carpenter	
Samuel C. Cates	
Wilford G. Champan (R)	
Jemie Reed Dixon	
John P. Dolan	
Harold E. Donnell	
Ralph J. Faulkingham	
Elmer D. Gibbs	
Thomas S. Grindle (R)	
Grace Vose Grube	

Ethel V. Haines (R)	
Sarah Snow Jellison	
Florence Carll Jones (R)	
J. Elliott May	
Jessie Ross Murchie	
Margaret Buswell Nash (R)	
Elsie Gardiner Pierson	
Leora E. Prentiss	
In memory of	
Walter J. Rideout	
Carl R. Smith	
Freda A. Snow	
Maude Collins Stevens	
Margaret Holbrook Titcomb	
Bess Cummings Walden	
Emma Leighton Walden	
Marguerite Whitehouse	
In memory of	
Alpheus L. Whittemore	
No. in Class	93
Contributors	31 (33%)
Amount	\$430
1913	
Ernest C. Marriner (R)	
Marian Ingalls Hague (R)	
Mathew Windell Allen (R)	
Margaret Adams Austin	
George L. Beach (R)	
Clair F. Benson	
Dora Libby Bishop (R)	
Lawrence R. Bowler (R)	
Crispus Brown	
Irving L. Cleveland	
Lucy Clough	
John H. Foster	
Phyllis St. Clair Fraser	
Pauline Hanson (R)	
James L. Howe	
Frederick A. Hunt	
Elmer H. Hussey	
Philip W. Hussey (R)	
John P. Kennedy (R)	
Eva Macomber Kyes (R)	
*Frances Pollard McBride	
Clara Winslow Moldenke	
Meroy F. Morse (R)	
Diana Wall Pitts (R)	
Leo G. Shesong (R)	
Chester G. Soule	
John Wells	
Ada Waugh Young	
No. in Class	83
Contributors	28 (34%)
Amount	\$296.50
1914	
Frank S. Carpenter (R)	
Clara Collins Piper	
Joseph P. Burke (R)	
Marjorie Meader Burns	
Edith Washburn Clifford	
Madeline E. Clough	
F. Harold Dubord (R)	
Idella K. Farnum	
Emmons B. Farrar	
Blanche C. Farrington	
Helen Thomas Foster	
Harry P. Fuller (R)	
Arthur D. Gillingham	
Marjorie Scribner Holt	
Seth F. H. Howes	
Paul W. Huff	
Mabelle H. Hunt	
Adelaide Klein Jackman	
Frank H. Jones	
Mabel Bynon McDaniel	
Stanley B. Miller	
Wilmer A. Mooers	
Marston Morse (R)	
Harold W. Nutting	
Emily Hanson Obeare	
Eva Pratt Owen	
Gladys Paul	
George W. Perry	
J. Franklin Pineo	
George W. Pratt	
E. Henry Gay Pratt	
Erma V. Reynolds	
Thomas J. Reynolds	
Fred W. Rowell	
Harry B. Smith	
William A. Tracy	
Harry S. Umphrey	
Ernest L. Warren	
Lois Peacock Warren (R)	
Milroy Warren (R)	
Ethel Merriam Weeks (R)	
Evan R. Wheeler (R)	
Louis A. Wilson (R)	
Everett L. Wyman	
No. in Class	112
Contributors	44 (39%)
Amount	\$667

1915	
Arthur J. Crafty	
Aldine C. Gilman	
Florian G. Arey	
Ralph A. Bramhall	
Harold S. Campbell	
Leon W. Crockett (R)	
Robert R. DeCormier	
Vivian M. Ellsworth (R)	
Thomas W. Farnsworth	
In memory of	
Paul F. Fraser	
Leonard W. Grant	
Helen N. Hanson	
Merle F. Hunt	
Roland B. Hutchins	
Frank A. James	
Marion Steward LaCasce	
Ina M. McCausland	
Chester R. Mills (R)	
Leslie F. Murch (R)	
Hazel Ross Pomroy	
Ruth Brickett Rideout (R)	
Marguerite Robinson	
Ray D. Robinson	
Kent T. Royal	
Raymond R. Thompson	
A. Ruth Trefethen	
Myrtle Everett Waite	
Mary A. Washburn (R)	
Lester F. Weeks (R)	
Evelyn S. Whitney	
Ray C. Young	
No. in Class	101
Contributors	31 (31%)
Amount	\$394
1916	
Lewis L. Levine (R)	
Esther French Spaulding	
Elizabeth Hodgkins Bowen (R)	
Edith Pratt Brown (R)	
Marion Miller Chase	
Philip G. Curtis	
Carroll E. Dobbin	
Franklin M. Dyer	
Frank C. Foster	
Arthur E. Gregory	
Samuel J. Hartley	
Vivian Skinner Hill	
Robert A. Hussey	
Cyril M. Joly (R)	
Don S. Knowlton	
Hazel N. Lane	
Eleanor Bradlee Mitchell (R)	
Ernestine H. Porter	
Donald E. Putnam	
John M. Richardson	
Ella R. Robinson (R)	
William C. Schuster	
Lois Osgood Skillin	
Byron H. Smith	
Carolyn Stevens Thompson	
Crawford A. Trea	
Frances E. Trefethen	
No. in Class	114
Contributors	27 (24%)
Amount	\$247
1917	
Edward D. Cawley	
Selma Koehler (R)	
Lucy M. Allen	
Harriet Canham Alley	
Mildred Greeley Arnold	
Hazel Robinson Burbank	
Helen D. Cole (R)	
Flora Norton Dexter (R)	
John F. Everett (R)	
Donald B. Flood (R)	
Grace A. Farnum	
Hazel M. Gibbs (R)	
Myrtle Aldrich Gibbs	
Harold E. Hall	
William M. Harriman (R)	
Madelyn Daggett Haskell	
Francis E. Heath (R)	
Maurice B. Ingraham (R)	
Leonora A. Knight	
Elsie M. Lane	
C. Wallace Lawrence	
Andrew C. Little (R)	
Lillian Tuttle Morse	
Floy Strout Murray	
Frederick A. Pottle (R)	
Lucy Taylor Pratt	
Cecil A. Rollins (R)	
Irma M. Ross	
Hazel Durgin Sandberg (R)	
Leonard A. Shea (R)	
Marion White Smith	
Ralph N. Smith	
John A. Stockwell (R)	

Donald W. Tozier (R)
 Nathaniel Weg (R)
 Paul G. Whittemore (R)
 Oliver C. Wilbur (R)
 Mildred Greene Wilbur
 Winifred Atwood Wilbur
 Grace Fletcher Willey
 Lester E. Young (R)
 No. in Class 100
 Contributors 41 (41%)
 Amount \$456

1918

George E. Ferrell (R)
 Daisy Murray Wilson
 Carleton M. Bailey (R)
 Merrill A. Bigelow (R)
 Howard G. Boardman (R)
 Helen Kimball Brown
 Helene R. Buker (R)
 Phyllis F. Cole
 Elizabeth R. Fernald
 Hazel Cobb Gillespie
 Norma H. Goodhue (R)
 Winifred Greeley
 Roy M. Hayes
 Margaret Wilkins Hickman
 Howard F. Hill
 Frank J. Howard
 Marion Horne Hunt
 Marian E. Lewis
 E. Bliss Marriner
 Alberta Shepherd Marsh
 Harvard E. Moor
 Alfred H. Peterson
 Marion Starbird Pottle
 Dorothy I. Roberts
 Hugh L. Robinson
 Violet Shaw Scott
 Hazel Whitney Snowe (R)
 Paul A. Thompson (R)
 Gladys P. Twitchell
 Leila M. Washburn
 Lucille Rice Wheeler
 Raymond C. Whitney
 Elwood A. Wyman (R)
 Eunice Chase Wyman (R)
 No. in Class 102
 Contributors 34 (33%)
 Amount \$429.50

1919

Burton E. Small (R)
 Mary Ann Foss Ogden (R)
 Charles V. Anderson
 Willard B. Arnold
 E. Reginald Craig
 Mildred Dunham Crosby
 Mira L. Dolley (R)
 Ralph H. Drew
 Wentworth V. Driscoll (R)
 Gordon E. Gates
 Helen Baldwin Gates
 Lincoln Heyes
 Helene Blackwell
 Humphrey (R)
 George E. Ingersoll (R)
 Hildegard Drummond Leonard
 Isaac D. Love
 Everett S. Marshall (R)
 Raymond H. Merrill
 Beatrice Bowler Nelson
 Marlon Campbell Newton
 Newton L. Nourse (R)
 Alice Barbour Otis (R)
 Matilda Titcomb Pavey
 Emily Kelly Russell
 Arthur F. Scott
 Martha Gregory Shibles
 John W. Stinson (R)
 Robert E. Sullivan (R)
 Julius G. Sussman (R)
 Phyllis Sturdivant Sweetser (R)
 Mary A. Titeon
 Vernon H. Tooker
 *Daniel W. Wentworth
 No. in Class 94
 Contributors 36 (38%)
 Amount \$519

1920

Phinehas P. Barnes (R)
 Stella Greenlaw Thompson
 Pauline Higginbotham Blair
 Raymond O. Brinkman (R)
 John W. Brush (R)
 Elliott E. Buse
 Rudolph E. Castelli
 Lillian Dyer Cornish
 Bernard Crane
 Lewis S. Crosby
 Alice Bishop Drew



TOUCH DOWN CLUB

This year all contributors whose gifts equalled or exceeded \$100.00 were enrolled as charter members of the Touchdown Club. Their names are listed below:

Frederick T. Hill '10
 Theodore R. Hodgkins '25
 Frank B. Hubbard '84
 Franklin W. Johnson '91
 V. Ray Jones '08
 Paul W. Kates '26
 Albert R. Keith '97
 Karl R. Kennison '06
 Warren R. Kershner
 David K. Arey '05
 George C. Averill
 Myrtice Cheney Berry '96
 J. Seelye Bixler
 Frederick E. Camp
 Edward D. Cawley '17
 Cecil W. Clark '05
 John R. Cummings '84
 Florence E. Dunn '96
 George E. Ferrell '18
 Hilda M. Fife '26
 Nina Vose Greeley '97
 Nissie Grossman '32

Neil Leonard '21
 Ernest H. Maling '99
 Hugh D. McLellan '95
 Merton L. Miller '90
 Mrs. Dwight W. Morrow
 Leslie F. Murch '15
 Margaret Buswell Nash '12
 Ralph E. Nash '11
 Newton L. Nourse '19
 Gertrude Ilsley Padelford
 Etta Purington Parsons '99
 Nathan R. Patterson '11
 Carroll N. Perkins '04
 Edgar B. Putnam '01
 Charles F. T. Seaverns '01
 Frank J. Severy '00
 William H. Stineford '30
 Harry B. Thomas '26
 William F. Watson '87
 Robert E. Wilson, Honorary
 Mrs. Mary Curtis Zimbalist
 Honorary

Rhoden B. Eddy
 Raymond Giroux
 Mabel MacCausland Grant
 Harriet Sweetser Green
 Merrill S. F. Greene
 Myron C. Hamer
 Ralph K. Harley (R)
 Lucille M. Kipper
 Ernest L. McCormack (R)
 Gladys Chase Nixon
 Edward L. Perry
 Betta Carter Pinchbeck
 Esther M. Power
 *Alfreda Bowie Rand
 Elsie McCausland Rich
 Carl W. Robinson (R)
 Guy E. Rouse
 Hugh A. Smith (R)
 Clarence A. Tash (R)
 Lucy O. Teague
 Daniel F. Tozier
 Seth G. Twitchell
 H. Thomas Urie
 Robert E. Wilkins (R)
 Marion Waterman Wood (R)
 Madge Tooker Young
 No. in Class 98
 Contributors 37 (38%)
 Amount \$405

1921

Bernard E. Esters (R)
 Elizabeth B. Carey
 Alice Clark Anderson
 Thelma French Arnold (R)
 Stephen H. Ayer (R)
 Paul H. Bailey
 Laura V. Baker
 H. Merle Barnum
 Stanley R. Black (R)
 Arthur J. Brimstine (R)
 Paul L. Brooks
 Alice LeRogue Brown
 Chauncey L. Brown (R)
 Abel E. Brudno
 Elizabeth Whipple Butler
 Dorothy Knapp Child
 Marion L. Conant (R)
 Clark Drummond
 L. Smith Dunnack
 Grace B. Foster
 Adelle McLoon Germano
 Grace Johnson Grant
 Everett H. Gross (R)
 Merle Davis Hamilton
 Geraldine Baker Hanney
 Charles R. Hersum
 Frank J. Hois
 D. Ray Holt (R)
 Hazel Peck Holt
 Neil Leonard (R)
 Lewis Levine (R)
 Nathan Lowell
 H. Chesterfield Marden (R)
 Wayne W. McNally (R)
 Philip H. Merchant
 Isabel Gentner Misto
 Irene Gushee Moran
 Bernice Butler McGorrrill (R)
 Charles A. Mitchell
 Elizabeth Blanchard Nicoll
 William J. Pollock
 Frederick J. Pope (R)
 Ransom Pratt (R)
 Libby Pulsifer (R)
 Mary M. Rice
 Ashton F. Richardson (R)
 Dorothy Rounds
 Bertion L. Seekins (R)
 Vernon G. Smith (R)
 Raymond Spinney (R)
 Harold R. Stone
 Reginald H. Sturtevant (R)
 Joel E. Taylor Jr.
 Elva C. Tooker
 Catherine A. Tuttle
 Milford I. Umphrey (R)
 Clara Carter Weber (R)
 Samuel Wolman

Clara Gamage Woodbury
 No. in Class 109
 Contributors 59 (50%)
 Amount \$646

1922

Clyde E. Russell
 Catherine D. Larrabee (R)
 Assa C. Adams
 Vina Parent Adams
 Raymond J. Bates
 Marguerite Craig Beach
 Virginia M. Bean
 Walter D. Berry
 Ashley L. Bickmore
 Avis Barton Bixby
 Julia Hoyt Brakewood (R)
 Mary Brier
 Dorothy M. Crawford
 William F. Cushman
 Kenneth C. Dolbear
 Elizabeth Dyer Downs (R)
 Bernice Strout Fortier
 Edwin W. Gates
 Ruth Banghart Greenleaf
 Robert M. Jackson
 In memory of
 Frank W. Knowlton
 Merle F. Lowery
 Helen Raymond Macomber (R)
 Arthur B. Malone (R)
 Leonard W. Mayo (R)
 Walter T. Moreland
 Edna Briggs Morrell
 Edna Chamberlain Nelson
 Irwin S. Newbury (R)
 Charles J. Paddock (R)
 Lorena E. Scott
 Ewan J. Shearman (R)
 H. Theodore Smith
 Laura M. Stanley
 Arthur J. Sullivan
 Mary Carl Taylor
 Henry D. Teague (R)
 Hazel Dyer Town
 William J. Wallace (R)
 Mary I. Whitcomb
 Hugh C. Whittemore
 Mildred Smiley Wing
 No. in Class 98
 Contributors 42 (43%)
 Amount \$244.30

Ernest R. 1923

Arlene Ringrose Brown
 Myrtice Swain Andrews
 Casper J. Azzara
 Rita Wheaton Belyea
 Arthur L. Berry (R)
 Frederick D. Blanchard
 Helen A. Brown
 Thomas A. Callaghan (R)
 Elliot F. Chase
 Mildred R. Collins
 Helen L. Davis
 Lucy Osgood Dean
 Marcia Davis Esters
 Stanley G. Estes (R)
 A. Galen Eustis (R)
 A. Chandler Farley
 Marlin D. Farnum
 Melva Mann Farnum
 Frederick G. Fasset
 Norman W. Foran
 Edward R. Frude (R)
 John R. Gow (R)
 Wendell F. Grant
 E. Stanley Kitchin
 Elizabeth B. Larrabee (R)
 Merton E. Laverty
 Gertrude Fletcher Lowery
 Marguerite Starbird Lunt
 Clarence R. Lynd
 Floyd T. McIntire
 Eleanor Wilkins Mock
 Hiram F. Moody
 George J. Odom
 Roland N. Pooler
 Harland R. Ratcliffe (R)
 Forrest M. Royal
 Ida Jones Smith
 Albert G. Snow
 Louise K. Tilley
 John F. Tilton
 Mary E. Warren
 No. in Class 117
 Contributors 42 (36%)
 Amount \$327

1924

Joseph C. Smith (R)
 Evrena Goodale Smith (R)
 John A. Barnes (R)
 Percy G. Beatty (R)

COLBY IS FOR THESE YOUNG MEN



ENJOYING THEMSELVES — Freshmen at a fraternity "Open House." Left to right: Harold B. Krieger, Brooklyn, New York; Dabney T. Martin, Haverhill, Massachusetts; Lee Linton, Brookline, Massachusetts; Edward H. Shenton, Westchester, Pennsylvania; and Dietrich von Koschembahr, Rye, New York.

Theodore C. Bramhall (R)
 Martha Marden Briggs (R)
 Arthur W. Coulman (R)
 George M. Davis
 Emilie Vigue Dillenbeck
 Mary Watson Flanders
 Paul W. Gates
 Dorothy M. Gordon
 Harry J. Greene (R)
 Grace M. Herrick
 John T. Howard
 Robert L. Jacobs (R)
 Louis Langman
 Charles S. Lewis
 Caroline Hodgdon Libbey
 Marion Cummings Mann
 Lena Cooley Mayo
 William J. McDonald (R)
 Ralph D. McLeary (R)
 Cathryn Cole Miles
 George T. Nickerson
 Ruth Allen Peabody
 Ruth Crowley Peverly
 Anne Brownstone Prilutsky
 Lawrence A. Putnam
 Noel J. Raymond (R)
 Albert H. Scott
 Evangeline York Scott
 W. Albert Seamans
 Arthur H. Snow
 Ronald W. Sturtevant (R)
 Ralph Tabberth
 Marian Drisko Tucker
 Glen B. E. Vale
 Merle Rokes Waltz
 Mildred Todd Weir
 Fred M. Weiss
 No. in Class 115
 Contributors 41 (36%)
 Amount \$379.50

1925
 Raymond L. Grant
 Louise Cates Clark
 Eva Alley
 Earle S. Anderson
 Edward M. Archer
 Dorothy L. Austin
 Carleton E. Bennett
 Mildred E. Briggs
 Robert C. Brown
 Alfred K. Chapman
 C. Barnard Chapman
 Elizabeth Kingsley
 Hiram H. Crie
 Chapman

Amy Robinson Cummings
 Lloyd M. Dearborn
 Marjorie Everingham
 Edgerly
 John F. Flynn
 Robert F. Fransen
 Herman Glassman
 Joseph P. Gorham (R)
 Raymond S. Grant
 William W. Hale Jr.
 Nellie Pottle Hankins
 Doris W. Hardy
 Flora M. Harriman
 Edith Gray Havice
 Marjorie Lebroke Haynes
 Theodore R. Hodgkins (R)
 Winona Knowlton Hugins
 Grace McDonald Jones
 Frederick J. Kinch
 Marion Johnson Kinch
 Seymour J. Koff
 Ralph M. Larrabee
 Alta Doe Maher
 Hollis W. Manning
 Edward H. Merrill
 Elsworth W. Millett (R)
 Edward T. Moynahan
 Hazel Berry Pettengill
 William F. Powers
 Doris T. Putnam
 Verne E. Reynolds (R)
 Arthur O. Rosenthal (R)
 Edward T. Schoff
 Rosamond Cummings Seltet
 Charles W. Shoemaker
 Russell M. Squire
 Ethel Childs Storer (R)
 Sylvester W. Sullivan
 George E. Tash
 Howard B. Tuggey
 Ellen Smith Weiblen
 Keith B. Weymouth
 Ethel Littlefield Whittier
 Carleton F. Wiley
 Phyllis Bowman Wiley
 No. in Class 127
 Contributors 56 (44%)
 Amount \$474

1926
 Harry B. Thomas (R)
 Pauline Lunn Chamberlin
 George B. Barnes (R)
 Francis F. Bartlett (R)

F. Clive Hall (R)
 Emily Heath Hall (R)
 Roy A. Bither
 Alpha Crosby Brown (R)
 Donald H. Dunphy
 Gilbert L. Earle
 Paul M. Edmunds
 Samuel R. Feldman (R)
 Hilda M. Fife
 Susan McGraw Fortune
 J. Frank Goodrich
 Ruby Sherman Berry (R)
 Stephen B. Berry
 George F. Hodgkins
 Ruth Walker Kilday
 Girlandine Priest Libby (R)
 Wilbur B. McAllister
 Irma Davis McKechnie
 Clarence MacLaughlin
 Carl R. MacPherson (R)
 Lerene Rolla Mowatt
 Jennie L. Nutter
 Marguerite L. O'Roake
 Carroll S. Parker
 Edith Gearson Phelan
 Elsie Frost Rapp
 George E. Roach (R)
 Marian B. Rowe
 Doris Garland Russell
 Neia G. Sawtelle
 Margaret Smith Shearman
 Kenneth J. Smith (R)
 Roger A. Stinchfield
 John S. Tibbetts
 Albert W. Wassell (R)
 Esther E. Wood
 Herbert McC. Wortman
 Mollie Seltzer Yett
 No. in Class 146
 Contributors 43 (30%)
 Amount \$651.50

1927
 William A. Macomber (R)
 Marguerite Chase Macomber (R)
 Joseph R. Anderson (R)
 Florence Plaisted Ayer
 James C. Brudno (R)
 W. P. Cadwallader
 Wenonah Pollard
 John E. Candelet
 Cadwallader

J. Ardelle Chase (R)
 Leola M. Clements
 Kenneth R. Copp (R)
 Ralph H. DeOrsay
 Evelyn M. Estey
 Donald H. Fassett
 Helen Smith Fawcett
 Percy C. Fullerton (R)
 Dorothy Giddings (R)
 Frances Tweedie Giroux
 Dorothy I. Hannaford
 Alan J. Hilton
 Mabel Root Holmes
 Herbert C. Jenkins (R)
 C. Evan Johnson
 J. Douglas Johnston
 James C. LaGrua
 Percy Levine (R)
 Philip S. Metcalf
 Helen C. Mitchell
 George L. Mittelsdorf
 Helen Stone Mittelsdorf
 Prudie R. Moore
 Albert U. Peacock
 Arline Mann Peakes
 Greshly C. Pierce (R)
 Clyde E. Riley (R)
 Arthur G. Sanderson
 Miriam Rice Schulze
 Perry Shibles
 Theodore G. Smart
 Gwreth T. Smith
 Muriel Thomas Squire
 Richard P. Staunton
 F. Clement Taylor
 Fred L. Turner
 Lura Norcross Turner
 Faith D. W. Sherman
 Elizabeth Alden Wassell
 Robert M. Waugh
 No. in Class 164
 Contributors 48 (30%)
 Amount \$373

1928
 E. Richard Drummond
 Ava Dodge Barton
 Irma Sawyer Andrews
 Rola B. Andrews
 Ralph H. Ayer
 Louise Bauer
 George P. Bernhardt
 Harold E. Carson
 Everett O. Champlin (R)
 Cornelia Adair Cole
 C. Stanley Corey
 Esther Parker Crossman
 Augustine A. D'Amico (R)
 Amy D. Dearborn
 Nellie M. Dearborn
 Margaret Davis Farnham
 Edmond P. Fiedler
 Cecil E. Foote
 Louis P. Fourcade
 Lela H. Glidden
 Douglas C. Gearson
 Elwood J. Hammond
 Augustus M. Hodgkins (R)
 Dorothy Daggett Johnston
 Martin M. Keats
 Walter F. Knofske
 Arthur B. Levine
 Arthur W. Littlefield
 W. Robert Lombard
 J. Lewis Lovett (R)
 P. Kenton MacCubrey
 Albert F. MacDougal (R)
 Claire Richardson
 MacDougal
 Clyde L. Mann (R)
 Evelyn Ventres Mariner
 Elizabeth Lewis Marsh
 Harriet Towle McCroary
 James T. McCroary
 Laurice Edes Merriman
 Donald H. Millett
 Charles P. Nelson
 Elizabeth Gross Nelson
 Lester R. Nesbitt
 John S. Parker
 Lawrence A. Peakes (R)
 Viola M. Philbrook
 Margery M. Pierce
 Myra Stone Pruitt
 In memory of
 John Ricci
 Roland M. Robichaud
 Cecil H. Rose
 Roy V. Shorey
 Alberta Van Horn Shute
 August F. Stiegler Jr. (R)
 William S. Tanner
 Mary E. Thayer (R)
 Albert J. Thiel

1930
 Ralph A. Pape
 Helen Chase Parday
 Pauline Bakeman
 Forrest M. Batson
 Philip S. Bither
 Helen Baker Bosworth
 Beth Beckett Bousfield
 Robert P. Brown (R)
 Evelyn Maxwell Bubar
 Beatrice Mullen Campbell
 John A. Chadwick
 Lucy Parker Clements
 Frank M. Cobleigh
 W. Thornton Cowing
 James E. Davidson
 Marjorie McLaughlin
 Deering
 Clarence A. Dyer
 Ethel Rose Earle
 Dexter E. Elsemere
 Lucille Whitcomb Elsemere
 Philip L. Ely
 Frank Giuffra
 Alma E. Glidden
 Ralph L. Goddard
 G. Gilbert Henry
 Carl R. Hines
 Pauline Morin Howlett
 Ralph B. Hurlburt
 Gerald A. Johnson (R)
 Lewis H. Kleinholz
 Mary McNamara
 Mary Rollins Millett (R)

Charles E. Towne
 Edna E. Turkington
 Ella L. Vinson
 Susie Stevens Watson
 George C. West
 Ross H. Whittier
 No. in Class 161
 Contributors 62 (39%)
 Amount \$364

1929
 David F. Kronquist
 Alice Paul Allen (R)
 Grace Stone Allen
 J. Drisko Allen (R)
 Everett W. Bell
 E. Richard Benson (R)
 Martha Allen Blackwell
 Neal D. Bousfield
 Joseph B. Campbell
 Oscar M. Chute
 Sylvia D. Crane
 Dorothy E. Deeth
 Virginia Dudley Eveland
 George E. Fletcher
 George Cecil Goddard (R)
 Vinal G. Good
 Lillian Morse Henry
 Philip R. Higgins
 Martha Holt Hines
 Everett H. Holmes
 Gilman S. Hooper
 Eleanor Butler Hutchins
 Dorothy Wilson Irvine
 Rupert M. Irvine
 Charles W. Jordan
 Dorcas W. Larson
 Robert G. LaVigne (R)
 Lowell P. Leland
 F. Elizabeth Libbey
 Clifford J. McGaughy
 Mary Yose McGillicuddy
 Edwin B. Merry
 Ernest E. Miller
 Philip L. Miller
 John W. Miner (R)
 John T. Nasse
 Edward R. Newhall
 Barbara W. Noyes
 Beatrice M. Palmer
 Warren R. Payson
 Mildred Roberts Pennoek
 Robert A. Peterson
 Rosalie Mosher Reynolds (R)

Sophie Reynolds
 John R. Richardson
 Ruth Bartlett Rogers
 Sterling C. Ryder
 Robert W. Scoble
 Mark R. Shibles
 Frederick J. Sterns (R)
 Donald B. Tupper
 Frank J. Twadelle
 Eberl A. Upvall
 John E. Walker
 Jean M. Watson
 Beatrice Miller Young
 No. in Class 179
 Contributors 56 (31%)
 Amount \$335.75

1930
 Ralph A. Pape
 Helen Chase Parday
 Pauline Bakeman
 Forrest M. Batson
 Philip S. Bither
 Helen Baker Bosworth
 Beth Beckett Bousfield
 Robert P. Brown (R)
 Evelyn Maxwell Bubar
 Beatrice Mullen Campbell
 John A. Chadwick
 Lucy Parker Clements
 Frank M. Cobleigh
 W. Thornton Cowing
 James E. Davidson
 Marjorie McLaughlin
 Deering
 Clarence A. Dyer
 Ethel Rose Earle
 Dexter E. Elsemere
 Lucille Whitcomb Elsemere
 Philip L. Ely
 Frank Giuffra
 Alma E. Glidden
 Ralph L. Goddard
 G. Gilbert Henry
 Carl R. Hines
 Pauline Morin Howlett
 Ralph B. Hurlburt
 Gerald A. Johnson (R)
 Lewis H. Kleinholz
 Mary McNamara
 Mary Rollins Millett (R)

Helen Kimball Mintz
 Samuel S. Morrison (R)
 Albert C. Palmer
 Norman D. Palmer (R)
 Deane R. Quinton (R)
 Thomas A. Record
 Bernard C. Shaw
 Margaret Hale Shaw
 William H. Stinneford
 Frances E. Thayer
 Harriet Johnson Titcomb
 Barbara Libby Tozier
 Pauline Brill Trafton
 Charles W. Weaver
 Malcolm S. Weed
 Edith M. Woodward
 No. in Class 158
 Contributors 48 (30%)
 Amount \$436.50

1931
Howard L. Ferguson
Maxine Foster Foster
 Ethel MacDougal Alamian
 George P. Allen
 Myrtle Paine Barker
 Thelma Chase Bevin
 Henry C. Bubar
 Isabel H. Clark
 Edward S. Cobb
 Mary Cadwallader
 Combellaack
 Faith Rollins Davidson
 John S. Davidson
 Wallace A. Donovan
 Frances Page Egan
 Robert B. Eldridge
 Arthur B. Esty
 Roderick E. Farnham (R)
 Helen Ramsey Felt
 Alexander E. Gillmor
 Hope Pullen Gillmor
 Marvin S. Glazier
 Norman Glover
 In memory of
 Louise Grearson Haley
 Beulah Siles Harris
 Elliott T. Hatch
 Barbara Heath
 Anne Macomber Holden

Junice Foye Hutchins (R)
 Frances E. Libby
 Lucius V. Lobdell
 Muriel MacDougal Lobdell
 Eleanor Hilton Martin
 William C. Martin
 Margaret McGann Merrill
 Jennie Dunn Millett
 Ruth Pineo
 F. Donald Poulin
 Evelyn Haycock Quinton
 (R)
 Alice Linscott Roberts
 Wayne E. Roberts
 Vivian F. Russell
 Pauline Gay Ryder
 In memory of
 Marjorie Dearborn Small
 George F. Sprague (R)
 George H. Stern (R)
 Marion White Thurlow
 John J. Wisnocki
 Ada Bates Wyman
 No. in Class 158
 Contributors 48 (30%)
 Amount \$319

1932
Edwin W. Maddocks
Phyllis C. Weston
 Douglas B. Allan (R)
 Robert T. Beals
 Jane C. Belcher
 James Blok (R)
 William H. Caddoo (R)
 John B. Curtis
 A. John DeMiceli
 Barbara Works Dyer
 Harvey B. Evans
 James E. Fell
 Estelle Taylor Goodwin
 Thompson D. Grant
 Nissie Grossman (R)
 Richard D. Hall III (R)
 Martha Johnston Hayward
 Myron M. Hilton
 Evelyn L. Johnson
 Bernard M. Johnstone
 Mary Louise Kelly
 Harold F. Lemoine (R)
 Samuel H. Marder
 Hubert J. Merrick
 Dolores Dignam Morgan
 Maurice E. Pearson
 Norman C. Perkins (R)

Evelyn M. Platt (R)
 Tina Thompson Poulin
 Henry W. Rollins (R)
 Viola Rowe Rollins
 Barbara A. Sherman
 Martin Sorensen
 Clinton F. Thurlow
 Ruth Nadeau Twombly
 Forrest C. Tyson Jr.
 Winnifred Hammett Tyson
 No. in Class 153
 Contributors 37 (24%)
 Amount \$478

1933
John P. Davan
Elizabeth Swanton Allan (R)
 Charlotte Bloomfield Auger
 Rosamond F. Barker
 Edith Hoskin Bolster
 Vernon L. Bolster
 Carleton D. Brown
 Evelyn Brackley
 Chadbourne
 Harold F. Chase
 Marguerite deRochmont
 Emery S. Dunfee
 Nancy Nivison Hamilton
 Marion Clark Harman
 Bertrand W. Hayward
 Gladys Averill Heuback
 Ruth Vose Janes
 Raymond O. Knauff (R)
 Howard I. Libby
 Marian Archer MacDonald
 Soli Morris
 Frances N. Perkins
 James E. Poulin
 Vesta Alden Putnam (R)
 Lillian Shapiro Reardon (R)

Donald H. Rhoades
 Katherine Holmes Snell
 Geraldine Colbath Taylor
 Bertha Lewis Timson
 Louise Coburn Smith
 Volten (R)
 Raul H. Violette
 Ruth Weston (R)
 Otis W. Wheeler
 Ethel Bragg Williams (R)
 Harrison F. Williams
 R. Leon Williams (R)
 W. Malcolm Wilson
 Perry G. Wortman
 No. in Class 156
 Contributors 37 (24%)
 Amount \$205

1934
Peter Mills
Louise Williams Brown
 Albert G. Bevin
 Louise I. Brady
 Mary L. Buss
 Rowena Loane Cooper
 Edward W. Cragin (R)
 Lois B. Crowell (R)
 Elliott A. Diggle
 Samsom Fisher
 Curtis M. Havey
 John P. Holden (R)
 William A. Logan
 Robert M. MacGregor
 Margaret Salmond

Myron H. Matz
 William H. Millett
 Barbara White Morse
 Eleanor W. Ness
 Franklin Norvish
 Frances M. Palmer
 Mary Ellen Hodgdon
 Prescott
 George C. Putnam (R)
 Portia Pendleton Rideout
 Frederick A. Schreiber
 Arthur W. Stetson Jr.
 Mildred Keogh Tinker
 Doris Donnell Vickery
 No. in Class 138
 Contributors 28 (20%)
 Amount \$160.50

1935
Joseph W. Bishop
Barbara Howard Williams
 Carroll W. Abbott
 George H. Anderson (R)
 Leo Barron
 Hope Bunker
 Ruth Thorne Chaplin (R)
 Beth Pendleton Clark
 Morris Cohen
 Ellen Dignam



SPECIALTY OF THE HOUSE—Italian sandwiches, prepared by these co-eds for hungry freshmen. Left to right: May Rieker, Bala Cynwyd, Pennsylvania; Beverly Baker, Malden, Massachusetts; Lorraine Arcese, Newtonville, Massachusetts; and Mary Sargent, Passaic, New Jersey.

Albion M. Farnham
 Melvin O. Flood
 Edward J. Gurney Jr.
 Leo F. Haggerty
 Wilma Stanley Hill
 Ellen M. Hoyt
 Margaret Jordan
 Wilfred R. Kelly
 Milton P. Kleinholz
 Theophila A. Krawiec
 Maurice Krinsky (R)
 Eugene A. McArary
 Kathryn Herrick
 McCrodden
 John R. Merrick
 Muriel Bailie Plum
 Elbridge B. Ross
 Elinor M. Ross
 Richard S. Sawyer
 Earl J. Sayer
 Virginia Swallow Seepie
 Gordon P. Thompson
 Ralph S. Williams
 Llewellyn F. Wortman
 No. in Class 149
 Contributors 33 (22%)
 Amount \$189.50

1936
Asa H. Roach
Ruth L. Mailey
 Kathryn Caswell Abbott
 Edna F. Bailey
 Arthur W. Bartel 2nd
 Hugh D. Beach
 Laura Tolman Brown
 Omar E. Canders
 George H. Crosby

Dorothy S. Cunningham
 Herbert W. DeVeber
 John P. Dolan (R)
 E. Noyes Ervin
 Raymond W. Farnham
 M. Milton Goldberg
 Alice Boquel Hartwell (R)
 Floyd M. Haskell
 Harold W. Hickey
 Maxine L. Knapp
 Nancy D. Libby
 Helen Curtis Lothrop
 Ruth Michalek McArary
 Ruth Milliet Maker
 Oliver C. Mellen
 Robert B. Merrill
 Lewis I. Naiman
 Morris B. Palmer (R)
 Natalie Gilley Reeves

John F. Reynolds
 Dorothy Gould Rhoades (R)
 James L. Ross
 Roberta Ryan Ryan
 Howard O. Sweet (R)
 Eleanor MacCarey
 Whitmore
 No. in Class 157
 Contributors 34 (22%)
 Amount \$143.54

1937
Morton M. Goldfine
Lucille K. Pinette
 Joel Allen
 Wilfred J. Combellaack
 Sara J. Cowan
 Margaret Libbey Darlow
 Pauline Walker Deans
 William D. Deans
 Edith E. Emery (R)
 R. Irvine Gammon
 Dorothy W. Goodwin (R)
 Marjorie D. Gould (R)
 Barbara Frazee Haynes
 Eleanor Ross Howard
 Kenneth A. Johnson
 Esther L. Marshall
 Ruth Yeaton McKee
 Paul K. Palmer
 Lewis E. Rush
 Wayne B. Sanders
 Janet Goodridge Sawyer
 Leo M. Seltzer
 Hazel Wepther Thayer
 Louise G. Tracey
 Mary Ewen Ulich
 Maynard C. Waltz
 Alfred H. Wheeler
 Henry V. Wilcox
 Whitney Wright
 Gordon S. Young
 No. in Class 136
 Contributors 29 (21%)
 Amount \$246

1938
Lawrence W. Dwyer
Marion E. Dugdale
 Joseph G. Antan
 Alfred W. Beerbaum
 Kenneth R. Bickford
 Josephine A. Bodurtha
 Cecil M. Daggett Jr.
 W. Linwood Haynes
 W. Kenneth Holbrook
 Harry K. Hollis
 Eliot S. Irving

Helen Foster Jenison
 Edwin M. Leach
 Lawrence C. Lightner
 Edward A. Lombard
 Jean R. Cobb Marrill
 Frederick B. Olsson
 Francis C. Prescott
 Frank A. Record
 Walter B. Rideout
 Charles H. Rimpco
 In memory of
 Donald L. Rockwood
 Carleton N. Savage
 Helen Wade Sawdon
 J. Marble Thayer (R)
 Louise Weeks Wright
 No. in Class 171
 Contributors 26 (15%)
 Amount \$141

1939
G. Ellis Mott
Elizabeth W. Darling
 Sally Aldrich Adams
 Constance Averell
 Robert S. Borovoy (R)
 Edward S. Boulovs Jr.
 Leon J. Brady (R)
 Eleanor Bavis Broughton
 Robert V. Canders
 Charles L. Dignam
 Clarence E. Dore
 Elliot H. Drisko
 Hejen Carter Gupitill
 Nathaniel M. Gupitill
 Priscilla Jones Hauter
 Elizabeth Solie Howard
 Leo S. Kresky (R)
 Ruth B. Lenart
 David C. Libbey
 Evelyn Short Merrill
 Katherine Coffin Mills
 Arlene Paine Osias (R)
 Wilson C. Piper
 Pauline Pratt Plaisted
 Jeannette L. Drisko
 Rideout

Louis Sachs
 Arline Bamber Veracka
 Donna deRochmont Wetzel
 Margaret A. Whalen
 Ernestine F. Wilson
 No. in Class 157
 Contributors 30 (20%)
 Amount \$146
 1940
Fred M. Gord
Frances C. Gray
 Dorothy E. Bake

J. Ande Baxter
Rufus A. Brackley
Clark H. Carter
Raye Winslow Carter
William A. Chasse
Eleanor Thomas Curtis
Ralph E. Delano
*Kenneth Dreyer
Clarence R. Fernald
Shirley Maddocks Hatch
Edward H. Jenison
Margaret Johnson Kenoyer
Gordon B. Jones
Stanley W. Kimball
Edwin E. Lake
Earle C. Lord Jr.
Priscilla B. Malley
Ernest C. Marriner Jr. (R)
Carl W. McGraw
Buell O. Merrill
Julia Wheeler O'Sullivan
Elizabeth Walden Palmer
Ellen Fitch Peterson
Doris A. Russell
Elizabeth Fitzgerald Savage
William A. Small
Kathryn Carson Smith
Leonard S. Smith
Conrad W. Swift
Alleen Thompson
Arthur T. Thompson (R)
Patricia Thomas Thompson
Constance L. Tilley
Marjorie Day Weeks
Barbara Towle Wheeler
Mary L. Wheeler
Spencer Winsor
Linwood L. Workman Jr.

No. in Class (R)
Contributors 40 (22%)
Amount \$211

1941

Herbert D. Sterns
Geraldine Stefko Jones
Henry W. Abbott Jr.
Jane Russell Abbott
Elizabeth Sweetser Baxter
Elmer L. Baxter
Mary Hitchcock Baxter
Hartley A. Bither
Antonio J. Bolduc
John W. Daggett
James A. Daly
Mildred Van Valkenburg
Demartini

Norris E. Dibble
Clare Donahue
Donna Horne Ellis
Rodney C. Ellis
Alta Gray Feddeman
Barbara Partridge
Ferguson
Diana Wiesenthal Friedman
Catherine P. Fussell
Hoover R. Goffin
Stanley Gruber
William H. Hughes
Allan R. Knight
Mortimer Lenk
Hiram P. Macintosh
Prudence Piper Marriner
Virginia B. Mosher
Ruth Lewis Nowlan
Linwood C. Potter
Ruth Scribner Rich
Lubor Leonovich Waltz
Robert E. Wheelock
Joanna MacMurtry
Workman

No. in Class 163
Contributors 34 (21%)
Amount \$150.50

1942

Eero R. Helin
Muriel Carrell Philson
Dorris Heaney Batt
Clifford F. Came
William R. Conley
Eleanor M. Cornish
Ruth E. Crowell
Natalie Moores Daggett
Muriel Howe Delano
Dorothy Smith Fernald
Olive Monell Gifford
Barbara R. Holden
Harold L. Huntoon
Mary E. Jones
Richard N. Kohn
Alton G. Laliberte
Jean Cannell MacRae
Weston MacRae
Lena E. Marsh

George A. Parker Jr.
J. Franklin Pinea Jr.
J. Richard Rancourt
Robert S. Rice
Priscilla George Ross
Harold D. Seaman
Jane Soule
Eleanor Stuart
Ruth MacDougall Sullivan
Marion B. Thomas
William E. Tucker
Samuel B. Warren
Lewis E. Weeks Jr.
Theodora Wright Weston
Charles J. Williams
No. in Class 213
Contributors 35 (16%)
Amount \$274.50

1943

James W. Moriarty
Kathleen Monaghan Corey
Charles G. Barietta

Arnold Glassman
Priscilla L. Higgins
Frederick W. Howard
William Hutcheson
Louise Callahan Johnson
Robert E. Kahn
Harry L. Levin
Barbara Blaisdell Libby
H. Carlyle Libby
Nancy Patterson McCarthy
N. Douglas MacLeod
Walter B. Maxfield
Evelyn Gates Moriarty
Elias R. Nawfel
Elizabeth Wood Reed
Carl Stern
W. Gardner Taylor
Sarah Martin Wahl
Helen M. C. Watson
Mary F. Weeks
No. in Class 192
Contributors 29 (15%)
Amount \$143.50

Doris Lyon Hesdorfer
Dorothy Dunham Hobbs
C. Emily Holbrook
Shirley Armstrong Howe
Joyce Theriault Howell
Nancy J. Jacobsen
Marie E. Jones
Rowen Kusnett Kessler
Hanna Karp Laipson
Hilda Robertson Lyons
Martha Blackington
Maxfield
Norma Twist Murray
Nancy K. Parsons
Jean O'Brien Perkins
Virginia Blair Sensibaugh
Laura Higgins Shaw
Harriet Glashow Singer
Frederick H. Sontag
Betty Soule
Roselle Johnson Tharion
Constance Choate Trahan
Margaret Lancaster Urie
Robert E. Urie
Mary L. Young
No. in Class 115
Contributors 32 (28%)
Amount \$113

Barbara Fransens Briggs
Alberta Bunney
Evangeline H. Chumacas
Mary Lou Clare
Alice E. Covell
Cynthia Crook
Alice Crooks
Tema Kaplan Cushner
Miriam Dickinson
Lois A. Eaton
Klaine E. Erskine
Norma Egerston Evans
William M. Fairley
Antoinette Fae
Anne K. Hagar
Hope R. Harvey
Mary Hathaway
Jean Hillen
Anne W. Houston
Olaf Kays
R. Fay Klafstad
Donald G. Leach
Roy F. Leaf
Kydra Barker Lowery
Barbara Backman Millar
James C. Noice
Frances Nourse
Andrew B. Offenhiser
Charles A. O'Reilly
Mary Marion Platsted
Carleton E. Porter
Lorenzo C. Rastelli
Claire Rosenston
Fred D. Sahagian
Karekin D. Sahagian
Patricia Sato
Robert Saganskey
Thomas W. Samuelson
Nancy Semonian
Daniel J. Shanahan Jr.
William C. Slemmer
George L. Smith
Carleton P. Stinchfield
Gerald Stoll
Ann Jennings Tausig
Barbara Van Every
Kenneth J. Vigue
Edward A. Waller
Leonard R. Warshaver
Haroldene Whitcomb
Conrad G. White
John White
C. Roy Woodman
Chester J. Woods Jr.
No. in Class 261
Contributors 65 (25%)
Amount \$242

RECORD OF THE ALUMNI FUND

Year	Contributors	Amount
1933	961	\$ 5,511.93
1934	1216	7,694.44
1935	1096	7,696.53
1936	1214	8,374.81
1937	910	6,122.15
1938	836	4,861.72
1939	1062	5,947.33
1940	1044	6,260.34
1941	1177	7,287.60
1942	1094	8,190.90
1943	1243	13,826.69
1944	1798	29,368.11
1945	2087	30,532.90
1946	2015	28,013.42
1947	1902	36,820.99
1948	1722	27,552.67
1949	1614	22,855.45
1950	1859	22,026.09

James W. Bateman
Hubert S. Beckwith
Elizabeth Field Blanchard
Jean Neilsen Braddock
Thomas R. Braddock
Eleanor Smart Braunmuller
Elizabeth Tobey Choate
In memory of
Harold A. Costley
Lowell R. Cumming
Marjorie McDougal Davis
Robert C. Dennison
Anne Dunmore
Thomas W. Farnsworth Jr.
Marion Treglow Hamilton
Calvin K. Hubbard
Howard R. Johnson
Jeanice Grant Keece
Anita Pooler Laliberte
Delbert D. Matheson
Thelma Proctor Matheson
Frank J. Misielis
Ruth Graves Montgomery
Hilda P. Niehoff
George A. Popper
Sidney J. Rauch
Ronald M. Reed
Lillian Beck Skolem
Ruby Lott Tucker
Alice Lyman Young
No. in Class 149
Contributors 32 (21%)
Amount \$156.50

1944

Philip E. Nutting
Joy Paddison Gardner
Madeline Turner Arnold
Rae Gale Backer
Nancy Curtis Bacon
Lowell E. Barnes
Jean McNeil Decker
Alexander E. Dembkowski
Wesley R. Doe
Patricia Berquist Donna

1945

Maurice M. Whitten
Roberta Holt Sachs
Adelle Grindrod Bates
Beverly F. Booth
Marguerite Broderson
Marilyn L. Bryant
Dorothy Chellman
Elizabeth Chamberlain
Ficker
Lina Cole Fisher
Edwin S. Gibson
Anita Konikow Glassman
Floyd L. Harding
Jeanne Parker Holmes
Doris Taylor Huber
Paul R. Huber
Doris Blanchard Hutcheson
Marie Kraefer Lowenstein
Joan Gay Poyner
Dorothy A. Reeves
Frances E. Ripperer
Lawrence Sachs
Constance Stanley Shano
Douglas N. Smith
Elsie Love Smith
Evelyn A. Sterry
Helen Strauss
Sherwood E. Tarlow
Elvira Worthington Taylor
William L. Whittemore
Mary Louise Fraser Woods
No. in Class 142
Contributors 30 (21%)
Amount \$138.50

1946

John W. White
Carol Robin Epstein
Norma Talmadge Billings
Carolyn Armitage Bouton
Naomi Dick Dice
Anne Calder Dick
Priscilla Tibbetts Durgin
Hope Emerson Hatch

1947

Dana I. Robinson
Harriet Nourse Robinson
William L. Bryan
Thomas W. Burke
Ruth Jaffe Gordon
Ray B. Greene
Gloria Kennedy Hammond
Marilyn L. Hubert
Helen B. Jacobs
Lawrence S. Kaplan
Stanley Levine
Jerry W. Merrill
Alice Billington Rex
Mary E. Walters
Jean Whiston
No. in Class 147
Contributors 15 (10%)
Amount \$75

1948

Aaron E. Sandler
Katherine E. Clark
Margaret Clark Atkins
Marion Sturtevant Atwater
S. Shipley Atwater
Ruth J. Barron
Shirley M. Bessey
Antoinette H. Booth
Douglas C. Borton
Blanche Lois Bowers
Joseph Bowler
Loring B. Buzzell
Eleanor A. Clayton
Mary A. Conley
Elizabeth Coombs
Dorothy Bunker Dubowick
Jane L. George
Mary Barbara Gilles
Nancy Gager Howard
Phyllis Harnden Kearney
Barbara Harrington Keith
Carolyn Brown Kelso
Merle Lathrop
Barbara Lindsay Lucy
Melzine M. McCaslin
Marie Machell
Robert Masters
Gordon T. Miller
Phyllis O'Connell Murray
Shirley Parks
Flora A. Pearce
Frederick W. Perkins Jr.
Jane S. Plummer
Ruth Rogers
Janet G. Rouvige
Allan D. Sarnar
Gloria Shine
Paul Solomon
Carol Silverstein Stoll
Harriet Sargent Wiswell
Marianna Nutter Wyr
No. in Class 254
Contributors 41 (16%)
Amount \$182.50

1949

Sidney B. McKeen
Marilyn Ann Jackson
Muriel Briggs Austin
Beverly J. Barnett
Elizabeth M. Beamish
Martha A. Bennett
J. Philip Berquist
Ann M. Beveridge
Arthur Blasberg Jr.
Joan Barnard Brady
Bette A. Brandt

FRIENDS
George G. Averill
Julius S. Bixler and Mrs. Bixler
Frederic E. Camp
James Creese
Howard Davis
Mrs. Franklin W. Johnson
Warren E. Kercher
E. Allan Lightner
Mrs. Dwight W. Morrow
Ida E. Nichols
Paul Nixon
William B. Skelton
Gordon W. Smith
Norman S. Smith
Dr. Payson Smith
Elmer C. Warren
Robert E. Wilson
Mrs. Mary Curtis Zimbalist
No. of Contributors 21
Amount \$2,463

CONTRIBUTORS RECEIVED After July 1, 1950
(not included in percentages)
Robert F. Fernald '13
Abbie G. Sanderson '14
Thorwald B. Madsen '17
John D. Anthony '19
Paul W. Kates '26
Melville G. Kilborn '26
Ava Dodge Barton '28
Lindon F. Christie '30
Michael G. Ryan '38
George A. Toothaker '38
Fred M. Ford '40
Edwin A. Toole's '41
Marilyn Ann Davis '43
Dorothy Holtman Lyon '44
Eugene C. Struchoff '44
Ruth Parsons Van Hoek '44
Frederick S. Wood '45
Virginia Brown Kellner '46
Charlotte R. Banks '47
Mary Ellison Levitt '47
Elizabeth W. Brown '49
S. Blair Lent '51

COLBY FOLK IN THE HEADLINES

STEPHEN C. PEPPER, grandson of Colby's ninth president and son of one of her most distinguished graduates, conducted a philosophical forum last December before students and faculty on "Aesthetics and World Understanding."

Professor of philosophy and aesthetics at the University of California, he is the grandson of The Reverend George Dana Boardman Pepper and the son of the late Charles Hovey Pepper, '89. Last June he also became a member of the Colby family as recipient of a Doctor of Humane Letters degree.

A quote from Professor Pepper's talk which evoked great comment was his reference to art today in Soviet Russia which he described as "remarkably like the art of the Nazis. It is the aesthetics of a dictatorship and not the aesthetics of a functional organized society."

EDWARD T. MOYNAHAN, '25, has been appointed a joint general manager in the United States of the General Accident Assurance Corporation.

Ed joined the General Accident group in 1947 as vice president of the Potomac Insurance Company. In 1949 he became executive vice president of that organization and, in general line with the development of the General Accident and Potomac as multiple line organizations, was appointed United States manager of General Accident. He held this position at the time of his new appointment.

MARSTON MORSE, '14, is among seventeen educators and seven other persons named by President Truman to serve on the National Science Foundation. As professor of mathematics at Princeton University, he joins a distinguished board whose membership includes President James Conant of Harvard; Chester I. Bernard, president, Rockefeller Foundation, and Lee A. DuBridge, president of California Institute of Technology.

The National Science Foundation has been set up to develop a national policy for the promotion of basic research and education in the physical, biological, engineering, and other sciences.

An unusual and fitting tribute was paid the Reverend EDWIN W. MERRILL, '09, last December when he was installed as an honorary canon of the Grace and Holy Trinity Episcopal cathedral in Kansas City. He has been rector of St. Mary's church in that city since 1918. The new honor, awarded for distinguished service and termed "a life-long badge of love and abiding respect conferred by the people of the diocese" in no way affects his rectorship.



ELECTED — Talbert B. Hughes, '32.

TALBERT HUGHES, '32, has been appointed a director on the Farm Credit Board of Louisville, Kentucky. Talbert was selected by Farm Credit Governor I. W. Duggan, Washington, D. C. from among three who were nominated by a poll of national farm loan associations in Ohio, Indiana, Kentucky, and Tennessee. He is a resident of Johnson City, Tennessee.

The seven man credit board serves as a board of directors for the Federal Land Bank, the Federal Intermediate Credit Bank, the Production Credit Corporation, and the Bank for Cooperatives, all of Louisville.

Talbert is attributed by *Who's Who In America* as having inaugurated the Johnson City Farmers' Institute which annually brings prominent national leaders to that city for a three day conference of businessmen and farmers.

LEON BRADBURY, '33, has been credited with saving the life of a Navy hero sentenced to death for a slaying in Hartford, Connecticut. He was appointed by the court late in 1948 as one of two defenders for the condemned man and the verdict in favor of the Navy lad last November was the culmination of months of effort on Bradbury's part.

Leon wrote some 500 letters and made countless telephone calls in locating wartime shipmates of the serviceman. The condemned man, Edward W. Krooner, could not remember a single address of his buddies and like so many others who were in the service recalled only nicknames.

Through continuous sleuthing many enlisted men and officers were found who had known Krooner and on the basis of their testimony his sentence was changed from one of execution to life imprisonment. It was Bradbury's first appearance as a counsel in a murder case.

Before the war he was a member of the legal department of the Connecticut Mutual Life Insurance Company and was counsel for Warner Brothers, Bridgeport where he also served as assistant to the vice president. He opened his law office after the war in Hartford. Normally he specializes in taxation cases.

An honorary degree was conferred on Dr. FREDERIC E. CAMP, '49 (Hon.), Colby trustee, by Stevens Institute of Technology at their mid-winter commencement exercises.

Dr. Camp was formerly dean and assistant to the president at Stevens. He is a graduate of Princeton University and holds the honorary degree of doctor of humane letters from Colby. He began his career as assistant to the dean at Princeton, later serving as headmaster of the Evans School, Tucson, Arizona and Chestnut Hill Academy, Philadelphia.

In 1941 he became dean of Stevens Institute and in 1947 was appointed assistant to the president, in which capacity he remained until March, 1950. He is a member of the Selective Board, V-12, Third Naval District, and besides being on the Colby board is on the board of trustees of Stevens. His home is at East Bluehill, Maine.

Class Notes About Colby Men And Women

1888

WILLIAM COLE retired from Harvard as a professor-emeritus in 1933 and has been living in Concord. In answer to a question on publications he has authored, he listed five books in accounting, one in economics, one in social philosophy, and one novel.

1896

MARTHA MESERVE Gould has many interests, particularly writing. She is editor of the Maine state paper of the Woman's Christian Temperance Union and president of the Maine Writers' Research Club.

1898

LEVI T. PATTERSON is a member of the Maine Senate from Freeport in Cumberland County.

Oldtimers — *Robie Frye*
89 Pinckney Street, Boston, Mass.

1899

HAROLD HANSON retired as a clergyman in 1946 and is pastor emeritus of

the First Baptist Church, Claremont, New Hampshire.

The MARTINS, GEORGE and MAUDE, escaped the rigors of our New England winter by flying south and spending several weeks in Saint Petersburg.

WILL STEVENS is author of another book, "Famous Women of America," one in a series for young people of intermediate and high school grades, published by Dodd, Mead. He is preparing another in the series, "Famous Men of Science."

1900

ETHEL RUSSELL, registrar of probate for Kennebec County, fell on the ice while returning to her home January 6 and broke her hip in three places. She has been getting along nicely in the Augusta General Hospital and expected to return to her home early this month.

1901

MARY BLAISDELL Belknap, Mansfield, Pennsylvania, plans to return to Reunion.

MAX BLACKBURN is wintering for another year at Mount Dora. He returns to Vermont early in May.

ADONIS HOWARD will be at Reunion with Mrs. Howard.



NED PUTNAM of Danforth has retired from the legal profession. He'll also be back for Reunion.

WILLIAM A. SCHWINDT in Pomona, California, is recovering from a slight injury from a fall that occurred just before Christmas.

MARGARET WILLIAMS Thomas is at 354 North Encinitas, Monrovia, California.

1902

The year 1950 marked a special anniversary for RALPH BEAN for it meant he had completed forty consecutive years as head of the science department at Girls' High School, Boston. He is an associate editor of *Rhodora*, publication of the New England Botanical Club.

BERTHA THAYER Flint is president of the Alves Photo Shop, Braintree, Massachusetts.

1903

LYDIA Foss Shipman continues as director of the School of Journalism which she founded in 1921. The school has its offices in the Times Building, New York City and offers courses "planned to give a student a knowledge of the fundamental principles upon which writing is based."

"The idea from the beginning," says Mrs. Shipman, "has been to maintain a center from and through which instruction, information, inspiration, and service could be given to those interested in a journalistic or literary career."

Prior to the founding of her own school she did newspaper work and taught journalism in Paul Institute, a junior college, in Washington, D. C. Some of her writings appear under her pen name, Dora Dana Oliver.



IN HIS HONOR — Frank Haggerty, '02, received congratulations from Lee Jackson, president of the Firestone Tire and Rubber Company (right) at a party given in Frank's honor at Akron, Ohio by athletes whom he had coached when he was at old Buchtel College. In the background is Eddie Wentz, local high school mentor. Mr. Jackson played football under Frank.

1904

MOLLIE CASWELL Carter spent several weeks this winter with her son, CLARK H. CARTER, '40, of Bronxville, New York.

BILL COWING retired in 1946 after being principal of West Springfield high school for thirty years. Since then he has served in the General Court as a representative from the 11th Hampden District, in which he makes his home.

Carl R. Bryant

Walpole Street, Dover, Mass.

1905

Professor ALEX JOHAN UPPVALL, former holder of the chair of Scandinavian languages at the University of Pennsylvania, finds himself in the center of a controversy over the merits of present-day Swedish writers, according to a New York *Times* dispatch (December 21) from Stockholm, Sweden. The newspaper article comments on the dispute over the merits of modern Swedish literature, accused by some as being unduly profane and vulgar.

The leader of the "purist brigade," heading the National Movement against Pornography and Profanity, is Ebbe Reuterdaahl. In support of his low opinion of Swedish literature, the latter used a statement from Professor Uppvall written in a letter last April 1 to a Swedish-language weekly, *Svea*, (Worcester, Mass.), branding modern Swedish fiction generally, and the writings of Vilhelm Moberg in particular, as "literary miscarriages."

"Long-since-demoded Freudianism has evidently fascinated certain Swedish writers and certain layers of the Swedish people," Professor Uppvall commented.

Cecil W. Clark

363 Walnut Street, Newtonville, Mass.

1906

Don't forget Reunion June 9.

JACK COOMBS was one of the principal speakers when baseball coaches met in Dallas this winter. Charles Burton, sports editor of the *Dallas Morning News*, devoted a full column to Colby's great diamond star—and to his coaching theories. He wrote in part,

"Coombs, according to the convention program is to speak on 'Offensive Play,' but if you've read his book, *Baseball*, now in its umpteenth printing and second edition in a dozen

years, you realize that this star of three world series could talk brilliantly on anything from sharpening spikes to what a player should wear in a hotel dining room."

Jack writes and says that he ran across PARKER CRAIG in Dallas. Recognized him at once in spite of his "middle spread and bald head."

FRED HUTCHINS has just retired after 25 years of service with the New Departure Co., Bristol, Connecticut. His wife is a music teacher and singer, with a considerable local reputation in radio and on the concert stage. He has two sons who run a job-printing business near Thorndike, Maine — Hutchins Brothers, also a daughter who married and settled on a farm in Lincolnville, Maine, also six grandchildren and two great-grandchildren!

KARL R. KENNISON has been appointed a special lecturer in hydraulics at Massachusetts Institute of Technology and will conduct a graduate course.

ELLIOTT C. LINCOLN was made professor-emeritus of English at Pomona College in 1949, after twenty-five years as a professor in the department. Elliott is still turning out short stories, and is active in community affairs. He is a member of the city council of Claremont, California and a director of the League of California Cities.

WILLIAM H. ROWE, whose several books dealing with Maine maritime history have attracted such favorable notice, is serving the Maine Historical Society as vice-president.

BILL STEVENS recently gave a talk before the Baltimore and Ohio Accounting Association on the importance of accurate statistics which elicited lengthy editorial comment in the January 29 issue of *Railway Age*.

The editor stated that, "The demand that exists for the I.C.C.'s railroad figures, as revealed by Dr. Stevens, is most impressive," and that their statistics "constitute the most complete and dependable record available for any industry in the world."

Bill is director of the Bureau of Transport Economics and Statistics of the Interstate Commerce Commission.

Karl R. Kennison

28 Byfield Road, Waban, Mass.

1907

A tribute was paid to ARTHUR STETSON in the Waterville *Morning Sentinel* last fall with an article on his

farm, Cedarhurst, near Mayflower Hill. For the past seventeen years he has been carrying on the farming and dairy business which was started by his father. His herd of cows supplies milk to more than eighty customers and three local stores. Besides farming and delivering milk, he drives a school bus and picks up fifteen children each school day morning. His father drove a real old school bus years ago, using horses. Arthur and his wife have four children. Arthur, Jr., was in the class of '34 at Colby.

1909

JOSEPH CHANDLER has been at Hahnemann Medical College, Philadelphia since 1927. He is professor of biology and chemistry. Last September the office of registrar was added to his many duties.

1910

Senior editor of the *Reader's Digest* is MERLE CROWELL. He was appointed in 1944 following a distinguished career in writing and editing. He was a reporter for the *New York Evening Sun* for four years, editor of the *American Magazine*, and director of public relations, Rockefeller Center Incorporated.

LEONA ACHORN Gillis has retired from teaching and is living in Milo, Maine. She is first vice president of the Garden Club Federation of Maine.

Dr. IRA W. RICHARDSON was recently elected chief of the medical staff of the Melrose, Massachusetts hospital.

The Reverend John M. Maxwell
R.F.D. #3, Oneonta, New York

1911

We'll see you at Reunion June 9.

MARJORIE BUCKNAM is executive secretary of the Warren County Tuberculosis and Health Association, Glen Falls, New York a position she has held since 1920. It is unhappy news to report Marjorie has been suffering from rheumatoid arthritis but we understand a treatment she is undergoing has resulted in remarkable improvement.

SINIA KING Leach sends news of Elinor Rose Flierl (daughter of GERTRUDE COOMBS ROSE and FRANCIS ROSE, '09) who resides in Snyder, New York. Sinia recently met a Filipino girl who attended Central Philippines College when the Roses were

Colby Alumni Meetings

DATE	AREA	PERSON IN CHARGE	PLACE
March 29	<i>Albany</i>	STANLEY B. MILLER, '14	University Club
March 30	<i>New York</i>	WILLIAM E. PIERCE, '27	Woodstock Hotel
April 2	<i>Philadelphia</i>	NORMAN D. PALMER, '30	Franklin Inn Club
April 3	<i>Washington</i>	ERNEST J. RODERICK, '36	Kenesaw Hotel
April 5	<i>Hartford</i>	CLAYTON W. JOHNSON, '25	Hotel Bond
April 10	<i>Augusta</i>	RALPH H. WAKEFIELD, '32	Augusta House
April 16	<i>Worcester</i>	LEOTA E. SCHOFF (Miss), '25	Franklin Manor House (West Boylston)
April 17	<i>Providence</i>	GEORGE N. BURT, '37	To be announced
April 23	<i>Bangor</i>	MARK R. SHIBLES, '29	Penobscot Exchange
April 26	<i>Houlton</i>	JAMES L. ROSS, '36	To be announced
April 27	<i>Presque Isle</i>	HARRY UMPHREY, '14	To be announced
May 2	<i>Portland</i>	DONALD TUPPER, '29	Portland Country Club

stationed there. She is now a student at Andover Newton Seminary.

MARY INGRAM QUINN whose husband is professor of chemistry at the University of Utah, Salt Lake City, writes of her family's activities. Her two married daughters live in California. One son-in-law is completing work for a doctorate in the radiation laboratory at Berkeley; the other is with the U. S. Navy in Korean waters.

BEULAH WITHEE continues in her position as teacher of Latin at Erasmus Hall, Brooklyn, New York. She is planning a sabbatical leave the last half of the school year and will be back at Colby for Reunion.

1912

JOHN BAGNELL makes his home in Salem Depot, New Hampshire, though he teaches at Methuen high school, Methuen, Massachusetts. He is past chairman of the Salem school board and at present a trustee of trust funds in the community.

LEORA PRENTISS heads the French department at Cony high school, Augusta, Maine. She has been on the faculty since 1922 and five years ago assumed the position of educational guidance director.

LILLIAN CARLL SCHUBERT served as a Colby delegate at the 100th anniversary celebration of Milwaukee Downer College March 1. Her husband represented Bates. The Schuberts' daughter, Edith, is a junior at Downer, studying occupational therapy.

1913

CARY BROWNELL is president of the board of finance of the city of East Haddam, Connecticut.

HENRY S. CUSHMAN has sold the insurance business which he operated in St. Louis for many years, and has bought a home at Rye Beach, New Hampshire. This winter he and Mrs. Cushman have been at the Alabama Hotel, Winter Park, Florida.

Phyllis St. Clair Fraser
14½ West Street, Waterville, Maine

1914

WILLARD ASHFORD is president of the Camino (California) School District. He has held this position since 1945.

TOM REYNOLDS is vice president and general counsel of the Southern California Gas Company, Los Angeles.

George W. Perry
3 Maine Avenue, Camden, Maine

1915

HELEN HANSON has joined the staff of Brigadier General SPAULDING BISBEE, '13, state civil defense and public safety director. Bisbee says he plans to employ Miss Hanson as liaison agent between his office and the state's organization for women. She will speak on civil defense subjects and help any local organizations with their civil defense plans, he declared.

The secretary of the Council for Public Schools in Quincy, Massachusetts is DOROTHY WEBB HOUSTON. She taught at Quincy high school from 1922-1928.

1916

Reunion dates—June 9.

FRANK DYER, living in Lexington, Massachusetts, is a toll circuit facilities engineer with the New England Telephone and Telegraph Company. He is

active in church and community work and has held several positions in the Episcopal Church of Our Redeemer in Lexington.

Mrs. Mary Griffin of Washington, D. C. and Dr. DON S. KNOWLTON were married February 3 in Portland, Maine.

EDITH ROBINSON retired from teaching in July 1949 after thirty-three years. She is now living in Lewiston.

ELLA ROBINSON heads the English department at Albany Academy for Girls, Albany, New York. Ella is advisory editor of the *Cavalcade*, magazine for secondary schools, and holds many club and civic positions. She has spent her summers in graduate study, last year attending the United Nations Institute at Mount Holyoke.

For the seventeenth consecutive year this winter LEWIS LESTER LEVINE sponsored an extemporaneous speaking contest at Colby in memory of his parents, Julius and Rachel Levine. The general topic on which students were assigned specific topics was "The Military Preparedness of the United States."

1917

ELMER CAMPBELL, a public health engineer, is director of the Division of Sanitary Engineering, department of health and welfare in Augusta. He has contributed articles to technical journals and is a Life Fellow of the American Public Health Association.

THORWALD B. MADSEN has retired after ten years of service as president of Trinity Seminary and Bible College of Minneapolis. In his new position he is a professor in a Theological Seminary in Chicago.

1918

A stroke of paralysis, suffered in 1943, has limited PAUL ALDEN's work in the Baptist ministry, however as those who know him would expect, he has not been idle and he is now president of the Indiana State Department of the American Federation of the Physically Handicapped. Prior to his illness he held several pastorates and for a decade was with the American Baptist Foreign Mission Society. Paul and his wife (MARY ELIZABETH JORDAN) have three married daughters. Mary has an interesting and profitable hobby, making accessory flowers from wood fiber.

HELEN KIMBALL BROWN teaches French and English in Hampton

Academy, Hampton, New Hampshire. Helen's two daughters are married. She has three grandchildren.

PHYLLIS COLE teaches in the English department of the Haverhill, Massachusetts high school and spends her summers at East Sandwich on Cape Cod.

Dr. IRVING DERBY is director of laboratories of the Wayne County Laboratory, Newark, New York.

NORMA H. GOODHUE, owner of a successful florist business in Fort Fairfield, has recently completed a course in Floral Art offered in Augusta by Henry Simmons of Boston.

MARION HORN Hunt has two daughters, one a registered nurse in the New Haven Hospital; the other, married and living in Concord, New Hampshire.

A member of the class of 1918 is back in school! ALBERTA SHEPHERD Marsh has evoked considerable comment throughout the state by her enrollment for graduate study at the University of Maine. Mrs. Marsh, a fifty-three year old mother, is on sabbatical leave from Portland High School to pursue a course leading to a master's degree in education this June. Her home in Orono is in a two-room log cabin which she shares with her eight-month-old puppy, Taffy. During World War II she became a substitute teacher and then later a full-time faculty member at Portland High School. Her daughter, MIRIAM MARSH Bartheaux, '47, was an instructor in biology at Colby, 1948-50.

KATHRYNE STURTEVANT MOORE teaches French and handles guidance work at Ward high school, Westerly, Rhode Island.

The Visiting Nurse Association in New Haven has DOROTHY ROBERTS as its mental hygiene consultant, a position she assumed in 1929.

Mrs. Ralph Scott

32 High Street, Caribou, Maine

1919

REGINALD CRAIG is an auditor with the U. S. Treasury Department, making his home in Oakland, California.

RALPH HUGHES is in sales development with the Hooker Electro Chemical Company, Niagara Falls, N. Y.

MATILDA TITCOMB Pavey has been teaching at Erasmus Hall high school, Brooklyn, New York since 1930.

Gordon Gates

12 Marston Court, Waterville, Maine

1920

HAROLD OSGOOD was guest of honor at a farewell party at Medford high school recently. He and Mrs. Osgood will visit with their son in Florida after which they plan to make their summer home in Ocean Park, Maine into a year-round dwelling.

ESTHER POWER has had a distinguished career as a teacher and, since 1943, with the government. She left Southern Illinois Normal University, Carbondale, Illinois after fourteen years as associate professor of English to join the Department of Defense as a research analyst. In the summer of 1949 she was visiting professor of English at the University of Arkansas, Fayetteville.

ALEXANDER A. LAFLEUR has been elected attorney general for the State of Maine. The fifty-two year old former Maine department commander of the American Legion defeated the fourth term bid of incumbent Ralph W. Farris of Augusta.

Phineas P. Barnes

158 State Street, Albany 6, N. Y.

1921

Everyone back for Reunion June 9.

CHAUNCE L. BROWN, manager of New England Telephone and Telegraph Company, Claremont, New Hampshire, is a member of the Hillsborough and Sullivan Counties rent control board.

ELVA JEFFS Burns is still living in Lahaina, which is on the Hawaiian Island of Maui.

SPIKE and MELVA (MANN) FARNUM live in Tenafly, New Jersey. He recently returned from a several months' stay in the Belgian Congo as supervisor for a religious organization.

VIVIAN HUBBARD Pillsbury's husband was elected superintendent of schools in Brewer last summer.

1922

GEORGE BRIER has been in the woolen business almost continuously since graduation. In 1949 he rejoined the American Woolen Company in Skowhegan as a "designer". He had previously been associated with the company in Oakland, Fairfield, and in Dover, New Hampshire.

Insurance has attracted HELEN RAYMOND Macomber who started her own business as insurance agent and broker last year in Ambler, Pennsylvania. Her

Placement

Few decisions are more important to an individual than the choice of a job. There is justifiable pride in the work of Colby's placement committee headed by Bill Millett.

Job guidance is its assignment and its success is attested to by the grateful alumni who have security and a profitable future as a result of its efforts.

Placement interviews are now being held with the class of 1951. If you have an opening in your organization or know of any elsewhere, let Bill know. He'll get in touch with those students who have the necessary qualifications. You won't regret it.

son, Dick, is a freshman at Gettysburg College.

Charles H. Gale

Locust Hill Road, Darien, Conn.

1923

ARTHUR BERRY is district manager with the New Jersey Bell Telephone Company. His home is in Asbury Park.

Dr. HARVEY J. BOURASSA has been elected president of the staff of the Sisters' Hospital, Waterville.

Director of admissions at Peekskill Military Academy is MERTON LAVERTY. He joined the academy faculty in 1942 coming from Hebron Academy where he was dean.

George J. Odum

16 Eaton Avenue, Woburn, Mass.

1924

Dr. JOHN BERRY is probably back in the Army inasmuch as he wrote last November that he expected to be recalled.

From MARY WATSON Flanders comes word that she is teaching at Bridgewater Central School, Bridgewater, N. Y.

LOUIS LANGMAN practices medicine in New York City where he is assistant clinical professor of gynecology and obstetrics at the New York University Medical School. He has had many articles published in medical journals. Louis has four children, three daughters and a son, ranging from thirteen to six years.

MARION BROWN Newcomb is a teacher and housewife in East Northfield, Massachusetts where she is on the

faculty of the Northfield School for Girls instructing in religion.

George T. Nickerson
15 Johnson Heights, Waterville, Maine

1925

NELLIE POTTLE Hankins represented Colby at the inauguration of Desmond W. Bittinger as eighth president of McPherson College in McPherson, Kansas, February 19.

CARROLL KEENE is a member of the Maine State Senate from Clinton in Kennebec County.

ALTA DOE Maher owns her own insurance agency, bearing her name, in Glen Ridge, New Jersey. She has a ten year old daughter.

Doris W. Hardy
77 Elm Street, Waterville, Maine



STEVE BERRY is in the hotel and club management field. From 1946-1949 he was food purchaser at Bowdoin College, but more recently has been manager of the officers' mess at Floyd Bennett Field, New York. He has two daughters, Christine, ten, and Patricia, seven.

GILBERT EARLE's home is in Stoughton, Massachusetts. He is assistant training director of the Eastern Gas and Fuel Associates, Boston.

COMMANDER SAMUEL R. FELDMAN has been promoted to captain in the Navy.

PERCIVAL PIERPONT has been appointed deputy warden of the Maine State Prison in Thomaston by Norman U. Greenlaw, commissioner of institutions. Employed at the prison for twenty years, he has recently been overseer of the plate shop. Prior to 1931 he was principal of Washington (Maine) high school. He is married and the father of three children.

GEORGE ROACH and GEORGE BARNES were recently guests of Rear Admiral Albert M. Bledso aboard the U. S. S. Saipan on a trip from Guantanamo, Cuba to Norfolk, Virginia.

CLAUDE STINNEFORD combines a teaching load at Earlham College with

a government position, staffing field offices of the Office of Price Stabilization. He commutes to classes from Indianapolis, Chicago, and Milwaukee.

1927

DR. JOSEPH WASHINGTON is back in the Army as a captain. He served five years with the Royal Army Medical Corps and won several campaign stars and medals. He studied for his medical degree at both Edinburgh University and at the Royal College of Physicians and Surgeons. Dr. Washington is married to the former Naomi Forsyth McDonald.

The Ron Baird Associates, Milford, Connecticut is headed by ROWLAND BAIRD. He has been in advertising and sales promotion continually since graduation. The Bairds have three daughters.

JIM BRUDNO has been practicing medicine in Quincy, Massachusetts since 1934, though he has taken time off to do post-graduate work at Harvard and the University of Pennsylvania Medical Schools.

VERA FELLOWS is librarian at the Department of Justice in Washington.

ROSE SELTZER Gahan is medical social work consultant with the American Public Health Association in New York City. The New York School of Social Work (Columbia University) awarded her a master's degree in social science in 1945. Her thesis, "Irregular Practices in Adoption" was published by the United Hospital Fund.

MABEL ROOT Holmes teaches Latin and French at Pinkerton Academy, Derry Village, New Hampshire.

DARROLD NICKERSON is office manager of Traveller's Insurance Company. Due to his Colby training he was able to ski four miles to work one day this winter from Oakwood, Ohio to Dayton's business district. This was a time when other people were unable to get to their offices.

1928

BOB and HELEN CHANDLER (HELEN ELIZABETH MERRICK) have two sons, Bob, Jr., and Richard. Bob senior is chief chemist with the Department of Health and Welfare, Augusta.

STANLEY COREY is a professor of economics at Kent State University, Kent, Ohio. During the war he was a Navy instructor (lieutenant) in aerial navigation.

A note from MILDRED ALLEY Butler brings news of her work and that of her husband who is vicar of St. Stephen's Episcopal Church, Sweetwater, Texas. She reports, "Colby's stock went up with my children when the Walcker Organ in Lorimer Chapel was featured in *Etude*. One child, now twelve years old, has studied violin five years and received a \$1,980 scholarship to continue next year at a Dallas preparatory school; the other child, now nine years old, has finished three years of piano and is also taking organ." Mildred has done considerable work in religious fields and received national recognition for her efforts as a statewide director of religious education.

Mary Thayer
10 Nudd Street, Waterville, Maine

1929

GRACE STONE Allen has been instrumental in having a cook book published by the Delta Alpha Society in Columbia Falls, Maine. If any of you want some tried and true recipes write to Grace for your copy of *Recipes from Way Down East*—price only \$1.50.

THALIA BATES Savage now lives at 4212 Stuart Avenue, Richmond, Virginia.

In the October issue of *Elementary English* in an article on children's, parents' and teachers' reactions to television the author acknowledges the cooperation among others of OSCAR M. CHUTE, superintendent of schools in Evanston, Illinois where the study was conducted.

DR. GILMAN S. HOOPER has been appointed assistant manager of high polymer research for Industrial Rayon Corporation, Cleveland, Ohio. Dr. Hooper joined the company's staff in February, 1949. Previously he had been associated with E. I. duPont de Nemours & Company in the Acetate Division of the Rayon Department.

DORCAS PLAISTED Larsen is a secretary with Stone and Webster Engineering Corporation, Boston.

MAJOR PHILIP MILLER is teaching courses in military training at the College of William and Mary, Williamsburg, Virginia.

SOPHIE REYNOLDS lives in South Portland, Maine where she is secretary at the Inness Photo Service.

Alice Paul Allen
138 Larch Street, Providence, R. I.

1930

PHIL ALLEN has been elected chairman of the Morenci, Arizona section of the American Institute of Mining and Metallurgical Engineers. Phil has been tremendously active in civic affairs. Three years ago he organized and became the first president of the Morenci Lions Club and is now the deputy governor for District 21-A of Lions International. In another field, the Boy Scouts of America, he is district chairman for all scout activities in Greenlee County. And it is little wonder he has become so interested for he has three sons, Philip, Jr., Dale, and Glenn to share scouting with him.

CLARENCE ARBER is executive secretary of the State Employees Merit Award Board in Augusta. He has been active in American Legion work and has contributed articles frequently to the Legion's *Newsletter*.

FRANK COBLEIGH is assistant personnel manager of the Beech-Nut Packing Company, Canajoharie, New York.

CLARENCE DYER is an instrument engineer with Minneapolis Honeywell, Philadelphia. He and his wife (BARBARA V. WORKS, '32) are the parents of three daughters and a son.

MILLAN EGERT has a timely assignment as assistant director of UNESCO Relations Staff, Department of State, Washington. He has held several governmental positions since 1938 including that of attorney with the Labor Department, district price executive with the OPA, and deputy director with UNRRA Displaced Persons Installation in Germany.

RAY PAPE has been appointed chairman of the merchants' division of the Waterville-Winslow Chamber of Commerce.

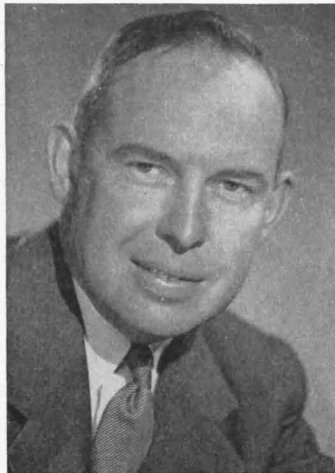
HELEN CHASE Pardey is dean of girls at Memorial high school, Middleboro, Massachusetts.

1931

Meet your classmates at Reunion

ED COBB is with the U. S. Naval Photographic Center, Washington, D. C. as head of specifications and tests in the research department. From 1929 to 1938 he was a chemist with Technicolor Motion Picture Corporation, Hollywood, and followed that by heading the photographic department of the Los Angeles County Museum. Ed is executive vice president of the Society of Photographic Engineers.

International Nickel Co., Whitefish



APPOINTED — Dr. Gilman S. Hooper, '29.

Falls, Ontario is the address of DICK Dow.

WINONA BERRIE Mullen is buyer and bookkeeper of Mullen's Jewelry store, Fairfield, Maine.

VIVIAN RUSSELL has been on the faculty of Kents Hill School, Kents Hill, Maine since 1943. She is dean of women, head of the English department, and director of dramatics.

1932

BILL CADDOO has been with the Robert Gair Company since 1933. He is currently general manager of the Thames River Division at Uncasville, Connecticut.

ABBIE BOYNTON Hilton has been principal of Somerset Academy, Athens, Maine since 1945.

New assistant principal of Greenwich (Connecticut) high school is DONALD A. ANDERSON. Don has been principal of Stafford Springs high since 1942.

1933

Congratulations to PADDY DAVAN who is the toast of the state as a result of the performance of his great basketball team representing Westbrook High, which defeated Bangor to win the Maine schoolboy title.

NORMA FULLER and Charles Hurst, Jr. were married November 25, 1950 in Englewood, New Jersey.

One of the teachers at Swampscott (Massachusetts) high school is AVERILL

GELLERSON. She is on the salary committee of the local teachers' association.

IRVING M. MALSCH is district manager of Bridgeport Brass Company in the Chicago area.

VICTOR H. PAQUET is assistant professor of mechanical engineering and in charge of engineering drawing and descriptive geometry at the University of Vermont.

1934

WILLARD FLYNT writes from Gansevoort, New York that he is guidance director at Glenn Falls high school. He has a six year old son, Willard Rogers, and a daughter, Heather Ann, born last October.

E. WILLIAM HUCKE has been elected to the board of education in Clinton, Connecticut. He is on the board of directors of the Community Public Health Nurses Association, serves on the Boy Scouts and Community Chest.

ROBERT M. MACGREGOR writes he is being transferred to Glasgow, Scotland, where he is to be resident surveyor for the American Bureau of Shipping at the Fairfield Shipbuilding and Engineering Co., Ltd.

ART STETSON is associated with the Veterans Administration in Philadelphia. He served with the Army in Germany in World War II.

Ruth E. White

104 Main Street, Orono, Maine

1935

ED and HARRIET BUYNISKI (HARRIET B. WEIBEL, '37) have a daughter, Elizabeth, born September 8, 1950, their fourth child.

DON LARKIN is orthopedic resident at the New York State Rehabilitation Hospital, West Haverstraw. During 1948-1950, he was on the staff of the Rhode Island Hospital, Providence.

VIRGINIA MOORE joined the secretarial staff of The First Church of Christ Scientist last October. She is in the office of the Committee on Publication.

DR. ARTHUR WEIN has sent in his new address as Gallinger Municipal Hospital, Washington, D. C.

David Hilton

58 Pleasant Street, Waterville, Maine

1936

This is our Reunion year — June 9.

DR. ALTON BLAKE is assistant attending gastro-enterologist at the Bryn Mawr Hospital, Bryn Mawr, Pennsylvania. Last year he completed a term

as secretary and treasurer of the John S. Sharpe Research Foundation.

HERB DEVEBER is dean of the Junior College at Dean Academy and Junior College, Franklin, Massachusetts.

RAY FOURNIER heads the science department and coaches at the Community High School, Fort Kent.

Portland newspaper readers were carried back through the years a few weeks ago when Blaine Davis, sports editor of the *Press Herald*, recalled some of the athletic events of January, 1936. "Colby's CLIFF VEYSEY," he wrote, "was nursing a leg injury hopefully as the Olympic tryouts approached, but another Mule, ELBRIDGE 'HOCKER' Ross, '35 already had been named to the Olympic hockey team."

1937

NORM BEALS is in retailing and merchandising, living in Geneva, N. Y.

ESTHER MARSHALL is secretary to the headmaster at Westtown School, Westtown, Pennsylvania.

CHARLES N. NAWFEL, Waterville's city clerk, has been appointed head of Waterville's second Civilian Defense organization.

ELIZABETH WILKINSON Ryan is a free-lance editor with the Grolier Society, New York City. She has also been active on the Committee for Refugee Education. She gives her address, through September, 1951, as Institut Pasteur, 28 Rue du Dr. Roux, Paris XV, France.

1938

JOE ANTAN has been rehabilitation counselor with the Connecticut Department of Education since 1945.

ARCHIE FOLLETT is a chemist with the Phillips Petroleum Company in Phillips, Texas.

ERNEST FROST has completed all his work for a Ed. D. at Columbia University and expects to receive the degree in June.

ED HOOPER is general manager of Whyte's Laundry, Lynn, Massachusetts. Ed is married to HELEN LEWIS, '38.

WALTER B. RIDEOUT is an instructor in English at Northwestern University.

Cataloger in the Cheney Library of the Boston University College of Liberal Arts is MARJORIE ROLLINS.

ROY YOUNG has been recalled to active duty in the Air Force and is at Keesler Field, Mississippi.

Jane Montgomery Cole
316 Linn Street, Ithaca, New York

1939

BOB CANDERS, in Albany, New York, is branch manager of the Automobile Mutual Insurance Company and the Factory Mutual Insurance Company. Bob spent four years as a captain with the 1st Armored Division. He was awarded the Purple Heart.

ELLIOT DRISKO has two sons, Elliot, Jr., and James. He is executive secretary with the Family Service Society of Yonkers, New York.

The Reverend NATHANIEL M. GUP-TILL has been appointed as field work director at Andover Newton Theological Seminary.

RHODA WEIN Kraft, recently married, lives at 292 The Esplanade, Apt. A38, Hackensack, New Jersey.

EVELYN SHORT Merrill is teaching English at Needham (Massachusetts) high and still enjoys it as much as ever.

PAULINE PRATT Plaisted is co-owner of Longfellow Advertising, Cape Elizabeth, Maine. Pauline also gives lessons in the flute and is in the Portland Symphony and the Community Center orchestras.

JEANNETTE DRISKO Rideout is senior cataloger at Deering Library, Northwestern University. Her husband is Dr. WALTER RIDEOUT, '38.

DWIGHT E. SARGENT was re-elected to the board of directors of the National Conference of Editorial Writers at a recent Des Moines, Iowa meeting.

MARGARET COOKE SHERIDAN has moved to 11 Wildcliff, New Rochelle, New York.

MARJORIE TOWLE Stinchfield writes that she and Ray are enjoying Auburn very much where Ray is principal of one of the junior high schools.

Ruth Pike Berry
Machiasport, Maine

1940

CLARK CARTER and his wife (RAYE WINSLOW) are living in Bronxville, New York. Clark is a division manager with the Vick Chemical Company in New York.

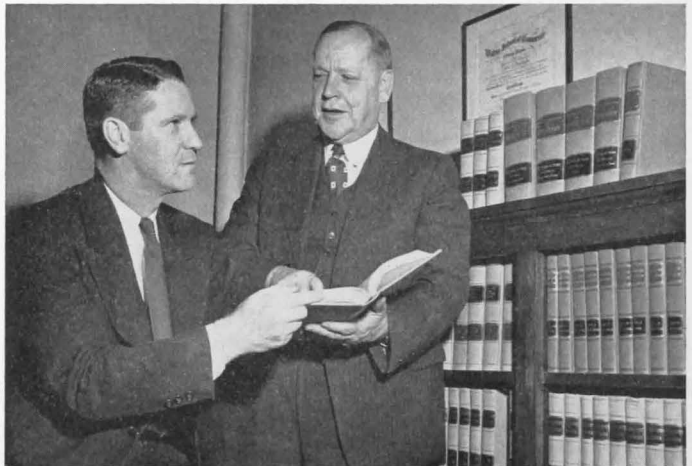
BARBARA MITCHELL's engagement to Ernest H. Hugonnet was recently announced.

CAROLINE PIPER Overfors who has been a nurse at the Boston Children's Hospital since 1943 was appointed a supervisor last year.

WARREN PEARL is another Colby alumnus coaching basketball who made good in a big way this winter when his Maine Central Institute (Pittsfield) team won the state prep school title.

HELEN OEXLE Pierce has had published many technical articles on psychology. A clinical psychologist by profession, Helen has been on the faculty of Cornell Medical School and a lecturer at the University of Connecticut.

Spencer H. Winsor
324 Main Street, Waterville, Maine



PUBLIC DEFENDER — Leon A. Bradbury, '33, left, was assigned as defense lawyer for a Navy veteran accused of murder. His tireless efforts over two years resulted in commutation of a death sentence to life imprisonment. Working with him, right, was Hartford attorney Reinhart L. Gideon. Details on page 17.

1941

Return to Colby June 9.

ELLAMARIE NOURSE AXINGER has been teaching at Duxbury High School, Massachusetts for the past three years.

HARTLEY BITHER is an auditor with the Birds Eye-Snider Division of General Foods Corporation, Rochester, New York. He writes, "Being one of the few remaining *free*, white, and 21 boys, I get many of the field assignments." He has been traveling to Minnesota frequently where the company has a new operation.

CATHERINE FUSSELL is working for the American Friends' Service Committee in Philadelphia in the Foreign Service Section on Budget Control.

HOOPER GOFFIN is teaching at the Babylon (Long Island) high school. He has been married for nine years and has two sons, Peter, six, and Bruce, two and a half.

A transfer for LLOYD GOOCH sends him from Mattapoisett, Massachusetts back to Liberty Mutual's Boston claims office as supervisor. The Gooches have a second daughter born in New Bedford on September 21, 1950.

ABDO HASSAN recently received honors from the national organization of Nash automobile dealers for his fine sales record at Hassan Brothers, Inc., in Quincy, Massachusetts, where he is sales manager. He and his wife have two sons, John and Richard. "Turk" is president of the Quincy Badminton Club, secretary of the Hingham Associates, and a member of the Aleppo Shrine in Boston.

CAROLYN BEVERAGE Keene has recently moved to Gray, Maine. The Keenes have Gary, Danny, and Donna, ages six, four, and two respectively. Until they moved to Gray they owned and operated a bakery at Longfellow Square in Portland.

JOHN MACLEISH is a buyer and supply service manager for the Mission Linen Supply Company in Santa Barbara, California. He and Mrs. MacLeish have two boys, ages six and four. They have been in California since John was stationed there during the war in 1943.

BEATRICE KENNEDY Malthais and her husband have a new home on Franklin Street in Waterville. They have three children, David, Juliana, and Lois.

PRUDENCE PIPER Marriner and ERNIE, '40, are in Wells, Maine where Ernie is town manager. They have two children, Martha and John.

RUTH LEWIS Nowlan is very active in community affairs in Foxboro, Massachusetts. She is president of the Women's Evening Division of Bethany Congregational Church, and has assisted in Red Cross, Community Chest, and work for the Mayflower Hill Development Committee. Her principal interest—outside of her husband and three daughters!—is the Girl Scouts.

JEROME ORENSTEIN reports that he is still single and is engaged in the wholesale grocery business with H. L. Orenstein Company of Methuen, Massachusetts.

RUTH SCRIBNER Rich's husband does electrical engineering research at M. I. T. Their children are Martha, three, and Ned, one.

BETTY BOAK Shields has a new address, 126 Ladd Avenue, Norfolk, Virginia. Her husband is still in the Navy and their daughters are Barbara Anne, five, and Ginny, two.

ALISON PIKE Slade has a new address. The Slades and their three children, Kathie, four, Kenneth, two and a half, and Meredith, seven months, are in a new house in Newton, Mass.

MARY ROBINSON Taylor and BILL, '40, are in Portland and have two youngsters. Bill is at Union Mutual and Mary is active in community, College Club, and Colby Alumnae affairs.

SHIRLEY PORTON Thrope writes from Lowell, Massachusetts that her time is taken up with her daughter, seven, and son, four, and cocker spaniel, three.

OLIVE SAVAGE Ward has enthusiastically joined the ranks of parents and homemakers and has a daughter, Linda, born last summer. The Wards are in Topsham, Maine.

The JOHN WARNERS (BOBBY KAIGHN) have a new house on Grasshopper Lane in Lincoln, Massachusetts. They have a daughter, Pam, and a son, Chris. Johnny, '42, is a captain on Eastern Airlines.

JOANNA MACMURTRY Workman and LIN, '40, are in Hopedale, Massachusetts where Jo is president of the Council of Church Women and a director of the Women's Club and Literary Society. Their boys are seven and a half and six—John and Philip.



We BAXTERS also have children, five and a half and two and a half, both boys, Ledyard and David. Elmer is assistant chief supervisor of payroll at Travelers Insurance Company in Hartford. Like many of the class who have sent news of themselves, we are interested in town and church activities and hope to be at Reunion in June.

Mrs. Elmer L. Baxter

745 Main St., Newington, Conn.

1942

There has been no let-up in HAROLD BUBAR's interest in sports. He is recreation director for the town of Houlton, Maine, water safety chairman of the Southern Aroostook Chapter of the American Red Cross, and a director of the Maine Ski Council. Harold and his wife LOUISE (LOUISE MARIE HAGAN) have two sons, four and a year and a half.

KEN DECKER is an electronic scientist with the Naval Research Laboratory, Washington, D. C. He has two sons, David and Dale.

PRISCILLA MOLDEINKE Drake's husband is a pathologist at the Indianapolis, Indiana General Hospital.

MILT HAMILT is sales manager of the Bobby Sportswear Company, Boston.

French continues to be of great interest to BARBARA HOLDEN. She followed the presidency of Colby's French Club as an undergraduate with graduate work at Middlebury, where she received her M.A. Since 1946 she has been on the faculty at Malden (Massachusetts) high school.

ART LINCOLN is an actuarial student with the National Life Insurance Company, Montpelier, Vermont.

Teacher-coach in Framingham, Massachusetts is ED LORING. Ed and his wife have a daughter, two, and a son, one.

LAURA MAGISTRATE is a chemist with E. I. DuPont DeNemours and Company, Wilmington, Delaware.

HELEN HENRY Merritt is living in DeKalb, Illinois, sixty miles west of Chicago, with her husband, Jim, and daughter, Debbie. They live and breathe college with family conversation revolving largely around education since Jim is the director of elementary student teaching at Northern Illinois State Teachers College, and they live in a big house in the midst of from six to ten students.

LINWOOD PALMER is serving his third term in the Maine Legislature.

BETTY ARCHER Ricca is librarian at the National Bible Institute (now Shelton College) in New York City. Young Thomas Archer Ricca will be four in April!

Mr. and Mrs. G. Dean Williams (BETSEY E. LIBBEY) welcomed their third child, Glenn Carleton Williams, November 30, 1950.

Little Roberta Ruth Brooks arrived at the home of Mr. and Mrs. WENDELL C. BROOKS (KATHERINE HOWES, '44) on December 13, 1950.

1943

ED BECKER teaches at New York Law School. He received his law degree from Yale in 1950.

It's a boy for Dr. and Mrs. ANDREW BEDO. Andrew Michael was born November 27, 1950.

MILLICENT T. BOLLING and Dr. William R. Tyson were married July 8, 1950 in Hartford, Connecticut.

HARRIET REX Fenney is an advertising copywriter with J. Walter Thompson Company, New York City.

ABE FERRIS has turned in a fine record during his first year as basketball coach at Chicago Latin school. The last we heard his team was number two in the area with six out of seven league

KEEP UP WITH YOUR FRIENDS

The Colby alumni directory now being assembled will be a valuable medium for keeping in touch with classmates and all Colby graduates and non-graduates. Great care is being taken to make this complete and accurate in every detail. You may order your copy at \$2.00 by writing the Alumni Office. There will be a wealth of information within its pages.

wins. Bud Cornish, sports editor of the *Portland Evening Express*, wrote in his column February 25, "Abe produced a football machine (last fall) that tore the private league apart slightly and made him the pride and joy of the coaching fraternity."

An attractive photograph of MARY LEMOINE Lape recently appeared in the *Portland Sunday Telegram*, as a newcomer to Portland where her husband, Dr. C. Philip Lape, is a surgeon. Assistant director of occupational therapy at Worcester (Massachusetts) State Hospital is RUTH HOWES Mistark.

ELIZABETH DURAND Ransom lives in Alexandria, Virginia. From 1948-1950 she was a research technician at the University Hospital of the University of Pennsylvania.

Hilda P. Niehoff

29 Roosevelt Avenue, Waterville, Me.

1944

DON BUTCHER has been appointed special agent for New York State with the Merrimac Mutual Fire Insurance Company. Don has been with the company since his graduation and gained his engineering training at the Mutual Fire Inspection Bureau. He will be located near Syracuse.

ROLAND BARRIAULT is a chemist in the Carothers Laboratory of the DuPont Experimental Station, Wilmington, Delaware.

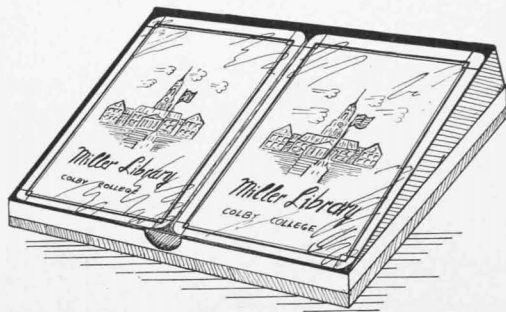
THE REVEREND JOSEPH B. BUBAR, pastor of the Highland Baptist Church, Fitchburg, Massachusetts, conducted special meetings in the North Vassalboro, Maine Baptist Church the latter part of January. He was assisted by Mrs. Bubar in the musical program.

ALEXANDER DEMBKOWSKI was recalled into the Navy in January.

LOUIS DERANEY received his law degree from Portia and Calvin Coolidge Law Schools last September. He is an associate group worker at the South End House, Boston.

JIM McMAHON left his job as sports editor of the *Lewiston Morning Tribune* (Lewiston, Idaho) in 1949 to become public relations director and social studies teacher at Coquille high school, Coquille, Oregon. Jim has been appointed a member of the

For an evening of Colby entertainment — order these attractive accessories, now!



Double deck set of Colby playing cards, one deck blue, one grey; attractively boxed, two decks per box —

\$1.75 per double deck, postpaid



Beautiful Colby glassware, all processed with permanent, baked enamel seals.

10 oz. Tumbler	\$4.00 per doz.
7½ oz. Old Fashioned	4.00 per doz.
Massive 6" Ash Tray	1.00 each
Dainty 3½" coaster sized Ash Tray, boxed sets of four	1.00 per set

Write for a free, illustrated catalog of many other Colby gifts and novelties.

COLBY COLLEGE BOOK STORE - WATERVILLE, MAINE

Coquille boxing commission.

It's a daughter for Mr. and Mrs. PETER H. IGARASHI. Geraldine Ruth was born November 2, 1950.

Engaged

BURTON SHIRO has announced his engagement to Phyllis Kovner.

Norma Benuska of Cleveland, Ohio and Dr. JOHN WOOD have announced their engagement.

Announcement of the engagement of Mary Donovan to ROBERT COLMAN was recently made.

Married

Virginia Royal was married to WILLIAM E. PIERCE November 25, 1950.

Jo Anne Taylor and CORNELIUS CALLAGHAN, JR. were married November 18, 1950 in Garden City, Long Island, New York.

1945

From Scott Air Force Base, Illinois comes word that Ed GIBSON is a first lieutenant assigned as a dental officer. Ed's Air Force career began as an en-

listed man in 1943 when he served as a dental assistant during World War II. He received his reserve commission last November. Prior to being called back to active duty he practiced dentistry in South Paris, Maine.

ANITA KONIKOW Glassman gives her address as, Station Hospital Dental Clinic, Fort Sill, Oklahoma. She received her nursing degree from the Massachusetts General Hospital in 1946. Anita and her husband, ARNOLD GLASSMAN, '44, have two children, Steven, born in 1948, and Judith, born last April.

The engagement of Beverly Carmichael to FLOYD HARDING was recently announced.

FRANK V. LONGO is the new manager of Meadow Glen Theatre in Medford, Massachusetts.

MIMI LEIGHTON Mayo has two daughters, Martha and Julie. Martha was born in 1948. Julie arrived last September. Mimi is on the board of managers of the Sweetser-Children's Home, Saco, Maine.

From DOROTHY REEVES Moyer comes word that she is a secretary at the U. S. Naval Hospital, Camp Pendleton, Oceanside, California. Her husband is an Army sergeant.

NAOMI COLLETT Paganelli is in the college department of Harper and Brothers, New York City.

JOAN GAY Payne has authored two articles for *Woman* magazine and now edits the *Armed Services YMCA News* in New York City.

A letter to Professor Brown from BILL WHITTEMORE brings word that Bill will be Visiting Lecturer on Physics at Harvard beginning this spring. He counts on making occasional trips to Maine and, of course, Colby. He received his Ph.D. in physics from Harvard in 1948 and went to Brookhaven National Laboratory where he is now located. Last summer he headed an expedition to the Rocky Mountains to carry on government investigation of certain phases of cosmic rays.

The Originators of



Flat

and



Round

Toothpicks

Forster
MFG. CO. INC.
FARMINGTON, MAINE

A Great Name In Woodenware For Over 60 Years

Boothby and Bartlett

GENERAL INSURANCE

185 Main Street

Waterville

Maine

HAROLD B. BERDEEN

JOB

SOCIETY

NOVELTY

PRINTING

35 Years' Experience

TEL. 152

92 PLEASANT STREET, WATERVILLE

Spring Sports Schedule

March		
26	Baseball	Bolling Air Force Base
27	Baseball	Camp Pickett
28	Baseball	Hampden-Sydney
29	Baseball	Washington & Lee
30	Baseball	Randolph Macon
31	Baseball	Norfolk Naval Air Base
April		
2	Baseball	Upsala
21	Baseball	Bowdoin (Exhibition)*
	Track	Norwich
	Golf	Bates
	Tennis	Bates
26	Baseball	Tufts
	Golf	Tufts
	Tennis	Tufts
27	Baseball	M.I.T.
	Golf	M.I.T.
	Tennis	M.I.T.
28	Baseball	Northeastern
		Boston University
	Tennis	Boston University
	Track	Middlebury, Vermont, Bates*
May		
2	Baseball	Bowdoin
	Golf	Bowdoin*
	Tennis	Bowdoin*
4	Baseball	M.I.T.*
5	Baseball	Bates
	Golf	Suffolk*
	Track	State Meet*
9	Baseball	Maine
	Golf	Maine
	Tennis	Maine
11	Baseball	Dartmouth
	Golf	Tufts*
	Tennis	Bates*
12	Baseball	Upsala*
	Track	Eastern Intercollegiate Meet at Boston
14	Baseball	Bates*
	Golf	Bates*
15	Tennis	Bowdoin
16	Baseball	New Hampshire*
	Baseball	Bowdoin
	Golf	Bowdoin
17	Baseball	Bowdoin*
	Tennis	Maine*
18	Golf	Maine*
19	Baseball	Boston College*
	Track	New England Meet at Springfield
21	Baseball	Maine*
	Golf	State Tournament at Augusta
	Tennis	State Tournament at Orono

*at Waterville

1946

Your friends want to see you at Reunion June 9.

CAROLYN WOOLCOCK Gaetske is secretary to the Maine representative of the National Foundation for Infantile Paralysis, a position she assumed in 1946.

DICK GRANGER is principal of the junior high school in Auburn, Massachusetts, a suburb of Worcester.

EMILY HOLBROOK teaches at the Hardie School, Beverly, Massachusetts. She is vice president and secretary of the Junior Women's Club, in near-by Randolph.

NANCY PARSONS and Robert G. Ferguson recently became engaged.

Recent Arrivals

ANNA VAN MIDDLESWORTH MacKee now has two children, Roberta Anne and Dennis Daniel. Dennis was born August 1, 1950.

A daughter, Janet Elizabeth Howell, was born October 19 to Mr. and Mrs. David Howell (JOYCE THERIAULT).

Mr. and Mrs. Robert Urie (MARGARET LANCASTER) are announcing the arrival of their second daughter, Leslie Ann Urie, January 30.

1947

Young James Christian Bender will be one year old this month and we'll wager his dad, BOB BENDER, takes the day off as manager at radio station WXNJ, Plainfield, New Jersey to celebrate it. Bob spent a couple of years as market analyst for Colgate-Palmolive-Pect and the Atlantic and Pacific Tea Company before turning to radio.

From Huntington, West Virginia NORMAN PAUL BROMLEY writes he is

an electrical engineer with Ensign Electric and Manufacturing Company.

The engagement of NANCY BURBANK to Jonathan B. Allured has recently been announced.

TOM BURKE has been recalled by the Marines to active duty. During his previous service Tom saw action in the Battle of Iwo Jima and on Guam and served with the corps in Tientsin, China. Until his recall he was associated with the U. S. Rubber Company.

SYLVIA GRAY teaches in Woodland, Maine. She is a member of the National Council of Teachers of English.

MARILYN HUBERT is a dance instructor at Arthur Murray's Washington studio. She writes that she enjoys the exercise and the people with whom she works. She shares expenses in running a house full of gals from the mid-west. She brought two of them to visit Colby's lovely campus last summer. "What a pleasure," she writes, "to find the elm tree planted by the class of '47 healthy and rooted to the spot."

FAITH JONES and Dr. Robert Middleton were recently married at Bangor.

MARJORIE MAYNARD is teacher-director of the Hancock Village Cooperative Nursery School, Chestnut Hill, Massachusetts.

DANA ROBINSON is in the Navy stationed at the Pentagon in the office of Naval Intelligence. He says he sees ERNIE WEIDUL, '43, and CHICK BAILEY, '48, every so often.

Jean Thompson and ROBERT WITHERILL were married December 26, 1950.

CARL WRIGHT recently passed his Maine bar exam.

Steven Nourse Robinson was born October 7, 1950 to Lt. and Mrs. DANA

R. J. Peacock Canning Company

Lubec, Maine

Canners of Maine Sardines

ROBINSON (HARRIET NOURSE).

Little Stephen Kerry Briggs arrived December 26 at the home of Mr. and Mrs. KERRY BRIGGS.

1948

JANE GEORGE is a psychiatric social worker at the Foxborough State Hospital, Foxborough, Massachusetts.

ED KAPLAN is associated with John Shillito's department store in Cincinnati.

MERLE LATHROP instructs in the department of zoology, Smith College.

As a physical therapist, ALICE-MARIE MARCH is coordinator in the cerebral palsy clinic of the Lenox Hill Hospital, New York City.

RUTH MARRINER has the unusual position of lantern slide librarian at the Yale University Art Gallery, New Haven.

HELEN MOORE Phillips is a secretary at the New England Deaconess Hospital, Boston. She is married to RUSSELL PHILLIPS, '49.

HILDA PROCTOR sends word that she is now Mrs. Charles G. Scott and is living at 30 N. 38th Street, Philadelphia.

HERB RANGER has accepted a position in the Ansco color process development laboratories in Binghamton, New York. Herb was with Remington



BACK FROM OVERSEAS — Mary Helen Wilson, '49, has returned from Germany where she was concerned with resettlement of displaced persons.

Rand's photographic division in Newton, New Jersey for two and a half years.

HAL ROBERTS has given up school teaching to become a claims adjuster for the Aetna Casualty and Surety

Company, working out of the Springfield office.

JANET ROUGVIE is a statistician-stenographer with the First National Bank of Boston.

LAURA ROGERS works in the sales department of the Harvard University Press, Cambridge.

Engaged

RUTH BARRON to Jerome I. Lunder.

JANET BOWMAR to Frank Reynolds.

GEORGEANNE DAVENPORT to Robert F. Sim, Jr.

HELEN MARIE KNOX to Donald R. Blackstone. Miss Knox is head of the English Department at Caribou High School. Mr. Blackstone is a junior at Tufts College of Dentistry.

ALICE-MARIE MARCH to James Q. Miller.

Married

REBECCA BIXBY and Richard Casey June 11, 1950 in Springfield, Massachusetts.

ELIZABETH COOMBS and John Corke, Westfield, New Jersey, February 3, 1951 in Maplewood, New Jersey.

HANNA LEVINE and Morton Shussheim, June, 1950.

MARCIA MAGRANE and Lt. George Deans, October 7, 1950, Ashiya Base Chapel, Japan.

MARGUERITE OVERN and Maclean

THE ELMWOOD HOTEL

*The Leading Hotel in a
Progressive City*

MODERN

EUROPEAN

150 Rooms

DINE IN THE
MAIN DINING ROOM
or
PINE TREE TAVERN

Upholding Maine's Tradition
for

HOSPITALITY AND FINE FOOD

SPLENDID BANQUET FACILITIES

Ample Parking Space

HENRY D. McAVOY, Manager



MEMBER FEDERAL RESERVE SYSTEM

MEMBER FEDERAL DEPOSIT INSURANCE
CORPORATION

UNITED STATES DEPOSITARY

AUTHORIZED TO ACT AS TRUSTEE & EXECUTOR

OFFICES

at

Waterville - Oakland - Fairfield - Madison

Skowhegan - Augusta - Winthrop

Gardiner - Hallowell - Richmond

Waldoboro - Wiscasset

Boothbay Harbor

Compliments of

Waterville Savings Bank

WATERVILLE, MAINE

GEORGE H. STERNS, '31

FRED J. STERNS, '29

HERBERT D. STERNS, '41

STERNS DEPT. STORES

WATERVILLE SKOWHEGAN

"The Stores of Famous Brands"

Tileston & Hollingsworth Co.

PAPERMAKERS

For More Than 147 Years

213 Congress St., Boston 7, Mass.

F. CLIVE HALL '26

MAINE REPRESENTATIVE

Compliments of

Waterville Fruit & Produce Co., Inc.

Sanger Avenue

WATERVILLE, MAINE

Waterville

Morning

Sentinel

Compliments

of

Howard B. Crosby

Kirkwood, Jr., January 6, 1951, in Lawrence, Massachusetts.

Nancy Gilbert of Boston, Massachusetts and ORVILLE RANGER, February 10, 1951 in Waterville.

Recent Arrivals

A daughter, Karen Britta, was born to Mr. and Mrs. CARL E. CHELLQUIST (SHIRLEY SMITH), December 21, 1950.

JOHN and Frances KIMPEL (FRANCES BENNER, '49) announced the birth of a son, John William Kimpel, January 31.

The SCOTT SCHALLERS announced the arrival of a son, Richard Blake Schaller, December 29.

1949

DICK MICHELSON'S Houlton high school basketball team was one of the outstanding teams in Eastern Maine during the past season. It was a second straight big year for Dick, who should have quite a career as a "mentor."

Budding lawyers in the class include ART BLASBERG at Harvard Law, JOHN CHERNAUSKAS and SAM HORNE, at Boston University School of Law.

MARY WILSON returned last August from Ludwigsburg, near Stuttgart, in the Western section of Germany, where she was a Church World worker in a Displaced Persons replacement center. Her job was processing immigrants for entrance into the United States. In spite of ever-present poverty she found many of the German students she met "almost optimistic" about their future.

"I would say they were fatalists," she commented. "They believe another war is coming and there is nothing they can do about it so they continue with their schooling. They are bitter about the split of Germany, but they don't know what can be done about it."

Mary is engaged to a young Latvian, Juris Veidemanis, who is studying modern languages at the University of North Dakota.

Secretary for the Dowd Advertising Company, Boston, is BARBARA FOLEY.

MARY LOUISE ROBERTS Friberg keeps house for her husband while he is attending Springfield College, class of 1951.

BUD NANNIG has switched allegiance from one Providence concern to another. He is now test-tubing for the Arnold Hoffman Company and the proud owner of a new Mercury.

BENSON NOICE, JR. is studying for his M.A. in history at the University of Pennsylvania.

JEANNE PELLETIER has been with the French Embassy (Press and Information Division) in New York City since June as a French-English secretary.

MARILYN PERKINS works as a recreational therapist at McLean Hospital, Waverly, Massachusetts.

LESLIE AMLAW Perry writes she is keeping house in Hancock, Vermont for her husband. She was married October 21.

AL SCHWARTZ is working on his master's degree in journalism at Northwestern University.

BURT SILBERSTEIN is now Pvt. Silberstein with the Army. When your correspondent talked with him, he had a few more weeks at Fort Devens, but haven't heard where he went from there. Anyone know?

GEORGE ("G.I.") SMITH is hot on the trail of his master's in geology at California Institute of Technology. "I'll get it in June," says George, "Mao-Tse-Tung willing." His mail goes: c/o Geology dept., Caltech, Pasadena 4, California.

Engaged

Jacqueline A. Curran of Malden, Mass. to SIDNEY B. McKEEN, '49, of Worcester, Mass. Miss Curran will graduate in June from Lowell State Teachers College where she majored in music education. Sid is a member of the editorial staff of the Worcester *Evening Gazette*.

Announcement has been made of the engagement of Faith Rothstein to ARNOLD SCHLAGER.

The engagement of MARY ELLEN GARDINER to Jay Benton of Monmouth, Maine was announced recently.

R. FAY KLAFFSTAD was recently engaged to Edward W. Carpenter.

Married

ROBERTA LONGLEY and JOHN MAHONEY were married December 29, 1950 at the Broadway Baptist Church in Fort Worth, Texas.

MARTHA ANN JACKSON and CONRAD WHITE were married February 24 in Winchester, Massachusetts.

Recent Arrivals

Susan Kathryn was born to Mr. and Mrs. GERALD STOLL (CAROL SILVERSTEIN, '48) on January 24, 1951.

BUD and DIANE (PALMER) CLARE announce the arrival of Richard W., III, born October 28, 1950 in Wellesley, Massachusetts.

Sidney B. McKeen
38 Roxbury Street, Worcester, Mass.

1950

The R. P. Hazard Shoe Company at Augusta has as its assistant superintendent and personnel manager, GEORGE BLACK. George served four years with the Army Air Corps.

BOB BONNER is foundry manager at the Bonner Foundry Company, Cambridge, Massachusetts. Bob was married last October to Mary Ellen Riley of East Boston.

CHARMIAN HERD is director of music at the State School for Girls, Hallowell, Maine. In her "spare time" Charmian finds opportunity for many outside activities in Augusta where she is a member of the solo double-quartet of the Cecilia Club, the Maine Federation of Music Clubs, the Maine Teachers' Association, and the Augusta Players.

PAUL HINTON is a new member of the faculty of Canton high school, Canton, Maine.

ELLEN KENERSON has been hired as a cadet teacher at Andover junior high school.

JEAN CHICKERING Nardozi divides her time as a wife and a secretary. Her office work is with the C. L. Miller Company, New York City as secretary to the production manager. JEAN and BOB NARDOZI, '49, make their home in Chappaqua, New York.

Peter Francis Perrigo put in his first appearance August 5. He is the baby son of CONSTANCE FOXCROFT Perrigo and her husband, Bob, who are living in Essex, Massachusetts.

MARGARET RODGERS has been appointed assistant librarian at the Lynn Public Library, Lynn, Massachusetts.

Engaged

MYRA HEMENWAY, '51, to GEORGE N. BOWERS, JR. Myra is the daughter of LELAND D. HEMENWAY, '17, and CLARA HINCKLEY Hemenway, '16.

ALBERT LETALIEN and Bernadette Dufresne.

CHARLES H. LORD, JR. and Colette Caron.

WILLIAM P. NIEHOFF and Barbara Wells of Needham, Massachusetts.

RICHARD BOWERS and RUTH GALLUP, '53. Dick is studying at Columbia Law School.

Married

MARY LOU KILKENNY and DICK BORAH September 9, 1950, in Belmont, Massachusetts.

Florette Hebert and PHILIP LAWSON, December 28, 1950 in Sacred Heart rectory, Waterville.

Dorothy Sawyer and HUGH WILLIAM STENFORS, JR., January 1, 1951.

VIRGINIA DAVIS and CHARLES PEARCE, '49, November 23, 1950, at Wilmington, Delaware.

BEATRICE DALE AVERY and Robert H. Benson.

BEVERLY ANN HALLBERG, '49, and CHARLES GREENLAW, February 18, 1951, at East Orange, New Jersey.

1951

Married

MYRA STICKNEY and Roswell Hamilton, Jr., September 1950.

Jane Woodhouse and RICHARD H. GASS in Birmingham, England. They will live in Boston.

LOIS L. THORNDIKE, '52, and RUSSELL BROWN, September 1950 in Camden, Maine.

JOY DELONG and JOHN J. KEOUGH, September 1950, in Houlton, Maine.

HELEN NICKERSON and Ensign Charles Arthur Martin, Jr., January 6 in Bayside, New York.

NADEEN FINBERG and Kalman Liebeskind, December 24 in Boston.

CONSTANCE WILEY and SCHUYLER MOTT, February 4, in Sanford, Maine.

1952

Married

Gloria Spaulding and ROBERT T. MORTON, August, in Bangor, Maine.

NANCEY HINCKLEY and Clifford L. Hagberg, Jr., September, in Hyannis, Massachusetts.

Diane E. Edes and AUSTIN M. DEANE, September 3, Sangerville, Me.

RUTH E. MERRIMAN and Richard G. Brown, October 9, Melrose, Massachusetts.

Engaged

Carl Lovegren to BRUCE MACPHERSON.

BARBARA VAUGHAN to Richard P. Sungren.

1953

Engaged

JOAN SHEA to John H. Conroy.
Joan Scandiffio to ROBERT WULFING.

1954

Engaged

JUDITH HOLT to Dr. Roy G. Boone.

Lawrence Portland Cement Co.

Dragon Portland Cement

Dragon Mortar Cement

MILL AND SALES OFFICE:

THOMASTON, MAINE

Lawrence: Quality Cements since 1832

Compliments of

Proctor & Bowie Co.

1 Bay Street

WINSLOW, MAINE

Compliments

of

Angelo E. Diversi

Oak Grove

Emphasizes Preparation for College and Gracious, Purposeful Living in a Program devoted entirely to Girls. Excellent Departments for the Girl with Talent in Music, Art or Dramatics. Joyous Recreational Life with Riding included. Winter Sports featured. Beautiful New Fireproof Buildings.

MR. AND MRS. ROBERT OWEN
BOX C VASSALBORO, MAINE

Emery-Brown Co.

Waterville's

Leading

DEPARTMENT STORE

Compliments of

Morin Brick Company

Furnishers of Bricks at

Colby College

DANVILLE, MAINE

In Memoriam

LEORA MATHEWS ROWE, 1882

Leora Mathews Rowe passed away in Waterville February 15 following a brief illness. She was born in Waterville in 1860, the daughter of John and Sataira Hunter Mathews and for many years lived in Oakland.

Surviving her are a sister, Mrs. Minnie Mathews Mann, 1880, four nieces, and two nephews.

SARA BROWN HOWE, 1894

Sara Brown Howe, 80, died in Hampden, Maine January 13 following a long illness.

Born in Stetson, Maine she lived in Norway, Maine most of her life prior to moving to Hampden five years ago.

A niece, Mrs. Berrita Young, Greenland, New Hampshire, and a nephew, Dana Brown, Bangor, survive her.

She was a member of Sigma Kappa.

WILLIAM BICKNELL NOYES, 1894

William Bicknell Noyes was born in Guilford, Maine November 6, 1871, the youngest son of the late Reverend William E. and Alice Wood Noyes. He died in Union Village, Vermont February 11. He grew up in Waterville, Maine, and attended the schools in that city and for two years attended Colby College, transferring to Harvard when his parents moved to Cambridge, Massachusetts in 1892.

After graduation he became principal of the schools in Farmington, New Hampshire where he married Miss Ethel Dow August 19, 1897. He served as principal in Whitefield, New Hampshire, Stratford high school in Stratford, Connecticut, Stonington high school in Stonington, Connecticut, and Norwalk high school in Norwalk, Connecticut. He was superintendent of schools in East Haven, Connecticut and Stonington, Connecticut, retiring in 1936.

After retiring he went to Union Village, Vermont and purchased the village store of A. W. Todd and conducted it for a short time before he sold it back to Mr. Todd and set up the Noyes Print Shop.

Quoting from the Hanover (New Hampshire) Gazette, February 22, "Mr. Noyes was busy with his printing which he loved to do. He was very generous with his work for community benefits printing artistic posters, tickets, etc. for social functions as his donation. He was always willing to lend his help for any good cause or to a friend or neighbor in need. He was a member of the Methodist Church here, sang in the choir since 1938, member of the Goodfellowship Club and P.T.A. He was on the School Board until his health failed. He was a member of the Masonic Lodge. He will be missed by the many friends that he has made in this town and community and those whom he left in New Hampshire and Connecticut."

Surviving him are his widow, his son, Russell of Bloomfield, Connecticut, and several nephews and nieces.

HARMON STEVENS CROSS, 1897

Harmon Stevens Cross died December 18, 1950. He was born in Augusta, Maine June 12, 1874, attended grade school in that city

and high school in Waterville prior to entering Colby where he was an A. T. O.

During his college career he carried out experimental work on the newly discovered X-ray with Professor William A. Rogers in the Shannon building. The pair gathered together the necessary equipment for experiments and when Professor Rogers passed on Mr. Cross took it with him to Alfred University, Alfred, New York, to use in conjunction with his teaching of science.

Other teaching positions during his life took him to Tilton Academy, Tilton, New Hampshire, and to Peabody and Watertown high schools, both in Massachusetts.

After leaving Watertown he abandoned teaching altogether and took up editorial work for a financial paper, *The United States Investor*.

He went to Freeport, Maine in 1931 after the death of his wife and with his own hands built a home at Flying Point. In 1940 he co-authored the town history, *Three Centuries of Freeport, Maine*.

He is survived by his niece, Mrs. Florence Garfield Thurston, of Flying Point.

CHARLES MELLEN WOODMAN, 1898, 1923 (Honorary)

Charles M. Woodman, 75, died in Chicago December 24 after a year of poor health. Formerly pastor of the West Richmond (Indiana) Friends church, at the time of his death he was an instructor of religious education and a trustee at Earlham College, Richmond. His course, "The History of the Society of Friends," attracted students of numerous denominations.

He was vice chairman and a member of the executive committee of the American Friends Board of Foreign Missions.

Dr. Woodman attended Portland (Maine) high school and followed his graduation from Colby with a Bachelor of Divinity degree in 1902 from Hartford Theological seminary. Colby bestowed a similar honor in 1923.

His work in the ministry began in 1902 when he was religious director of Moses Brown School in Providence, Rhode Island. From 1904 to 1916 he was pastor of the Oak Street Friends church, Portland, going to Richmond in 1916 to the West Richmond Friends church, from which he retired in 1919.

Author of several religious books, early this year Dr. Woodman had published by the Bobbs Merrill Company *Quakers Find a Way*, a history of the Quaker movement.

He is survived by his widow, a son, Dudley Woodman of Chicago, and a grandson.

GRACE STETSON GRANT, 1907

Mrs. Grace Stetson Grant died in Waterville January 26 following a brief illness.

A graduate of Coburn Classical Institute, she received her A.B. degree from Colby and her M.A. from Middlebury College.

Over a period of thirty years she had taught at several secondary schools in many Maine communities and only recently had retired. The daughter of a Baptist minister, she was a member of the First Baptist Church of Waterville for nearly fifty years.

Surviving her are two daughters, Miss Abbie J. Grant of Augusta, and Mrs. Grace G. Roberts of Skowhegan; a son, Elander W. Grant of Searsport; seven granddaughters, two brothers, and several nieces and nephews. She was a member of Chi Omega.

MAURICE EDWIN SIMMONS, 1935

Maurice Simmons died December 7. His home was in Glenmere, Maine.

He graduated from St. George High School in June, 1929 and furthered his education at Higgins Classical and Hebron Academy before entering Colby. During World War II he spent four years in the service.

Maurice was active in the work of the Eureka Lodge of Masons in Rockland and was Master of the lodge at the time of his death.

At his passing, tribute was paid to him by members in a resolution which read in part,

"He was always interested in the welfare of the entire community and alert to all opportunities whereby he could be of service to his fellow men. Always keenly interested in wholesome sports, he took an active part in baseball and other activities."

Maurice is survived by his wife.

NORMAN L. WALKER, 1938

Norman Walker, captain of the 1937 football team, died January 24 after a prolonged illness in Scituate, Massachusetts.

A native of Boston, Normie skated his way to fame playing with the Olympics of the Eastern Amateur Hockey League and touring Europe with the American Hockey Association teams of 1946, 1947, and 1948.

At Colby he was president of his class as a freshman, vice president as a sophomore, captain of the freshman football and varsity captain three years later. He won his letters in hockey, football, and track and was named to both the "All New England" and "All Maine" hockey teams in 1937 and 1938. He was class marshal at graduation and a member of A. T. O.

During the war he served with the Army Air Force and up until the time he became ill, taught and coached sports at Scituate high school. Previously he was a teacher-coach in schools at Richmond (Maine) and in Westwood (Massachusetts).

He is survived by his wife, two children, Norman, Jr., and Judy, his parents, three brothers and a sister.

GUY H. STURGIS, 1941

LL.D., Honorary

Guy H. Sturgis, retired chief justice of Maine's Supreme Court, died January 18 at the age of 73.

A graduate of Bowdoin, he took a year of legal studies at Columbia University before entering the Portland offices of Thomas B. Reed and George M. Seiders where he completed his legal training.

At 39, in 1917, he became one of Maine's youngest attorneys general. His appointment to the State Supreme Court came in 1923 at the direction of Governor Percival P. Baxter. He held the honor continuously until he was named chief justice in 1940 by Governor Lewis O. Barrows. He retired in 1949.

On his passing Governor Frederick G. Payne said, "He possessed every quality any human being could ever hope for—kindness, love of his fellow men, a keen sense of justice and ability, that gained for him great confidence of all the people."

Surviving Mr. Sturgis are five children and his widow, Elizabeth.