

Atlas of Maine

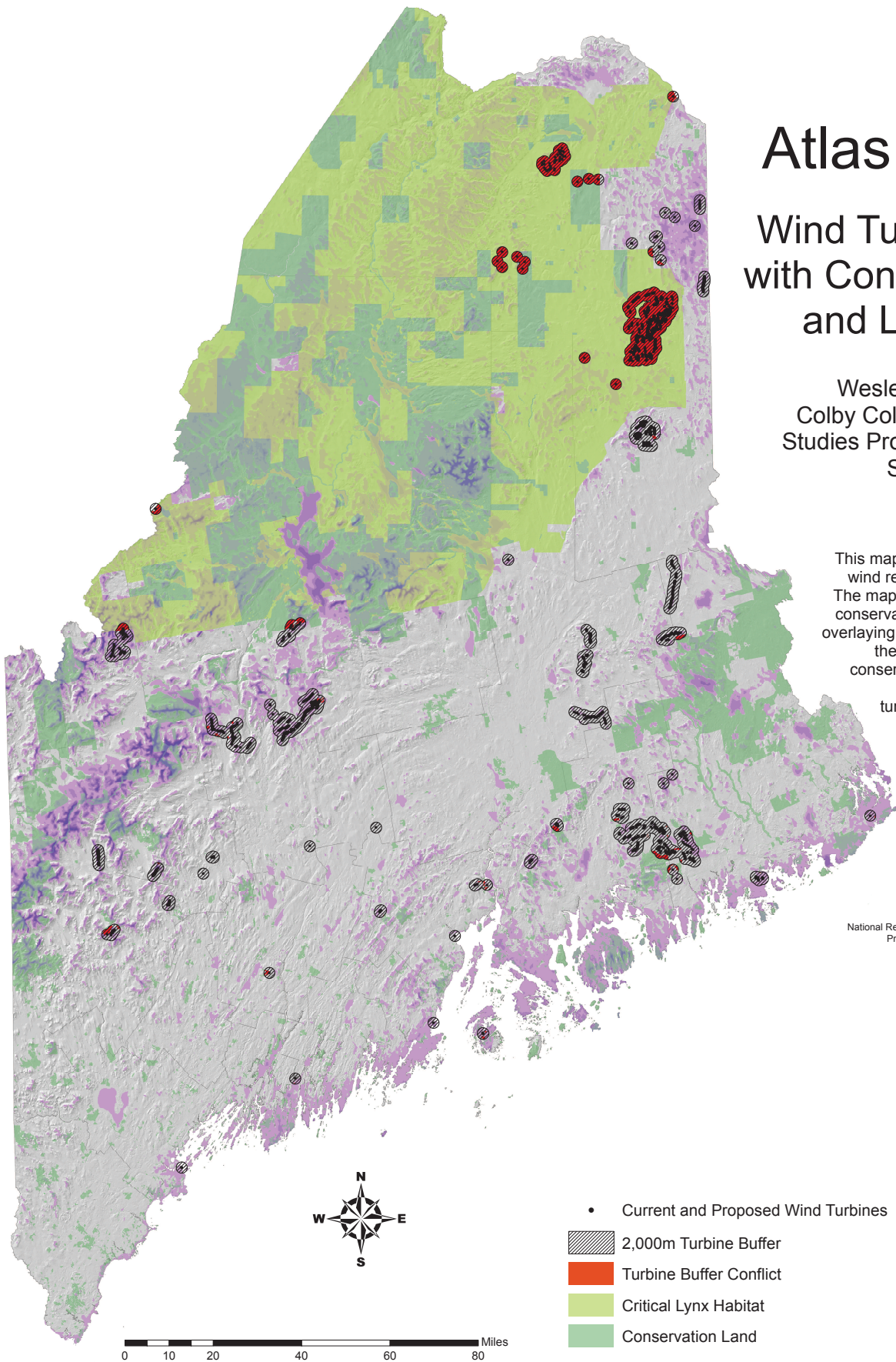
Wind Turbine Conflict with Conservation Land and Lynx Habitat

Wesley Zebrowski '18
Colby College Environmental
Studies Program, Waterville, ME
Spring 2016

This map displays a conflict between Maine's wind resources and its rich wildlife habitats. The map contrasts wind energy potential with conservation land and lynx critical habitat. By overlaying current and proposed wind turbines, the map shows which sites overlap with conservation land and lynx habitat. A buffer zone of 2000 meters around each turbine is used to estimate this conflict. A rough 2000 meters distance is the most widely agreed upon turbine buffer, utilized by over 18 different sources, including academic, local, and international sources.

Sources: Maine Office of GIS, U.S. Fish & Wildlife Service, National Renewable Energy Laboratory, Federal Aviation Administration
Projection: NAD_1983_UTM_Zone_19N, Transverse Mercator
Scale: 1:500,000

http://digitalcommons.colby.edu/atlas_docs/



Wind Energy Potential

Wind Power Class

- 1 Poor
- 2 Marginal
- 3 Fair
- 4 Good
- 5 Excellent
- 6 Outstanding
- 7 Superb

• Current and Proposed Wind Turbines

▨ 2,000m Turbine Buffer

■ Turbine Buffer Conflict

■ Critical Lynx Habitat

■ Conservation Land