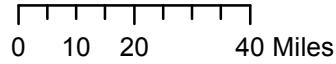
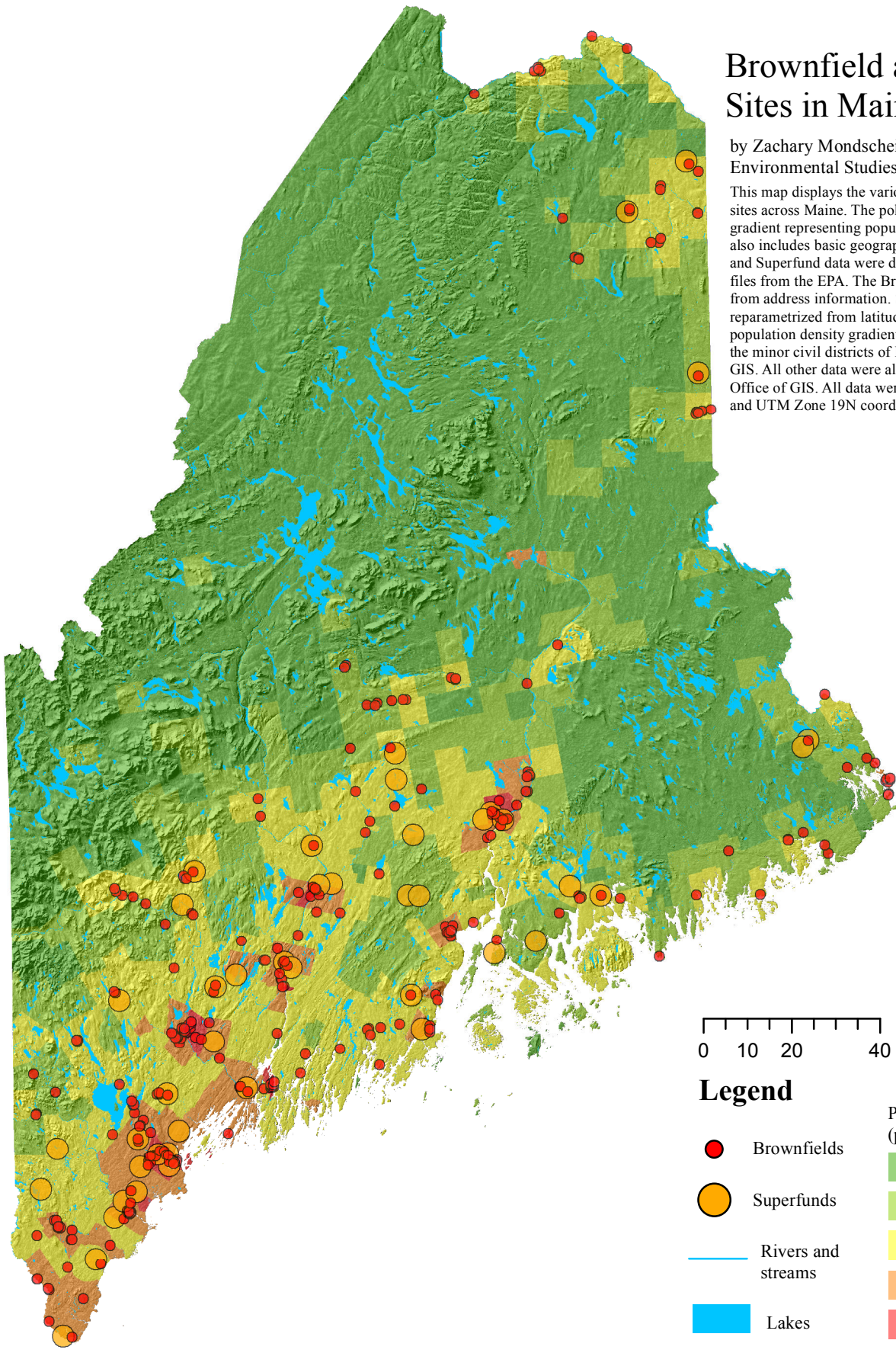


Brownfield and Superfund Sites in Maine

by Zachary Mondschein
Environmental Studies, Colby College

This map displays the various brownfield and superfund sites across Maine. The pollution information overlies a gradient representing population density. The display also includes basic geographic information. Brownfield and Superfund data were downloaded in separate.csv files from the EPA. The Brownfield data were geocoded from address information. Superfund data were reparametrized from latitude and longitude values. The population density gradient was created using a map of the minor civil districts of Maine from the Maine Office of GIS. All other data were also accessed through the Maine Office of GIS. All data were projected using NAD 1983 and UTM Zone 19N coordinate system.



Legend

- Brownfields
 - Superfunds
 - Rivers and streams
 - Lakes
- | Population density (people/square mile) | |
|---|---------------|
| | 0.000 - 8.9 |
| | 8.9 - 44.5 |
| | 44.5 - 188.5 |
| | 188.5 - 768.4 |
| | 768.4 - 3107 |