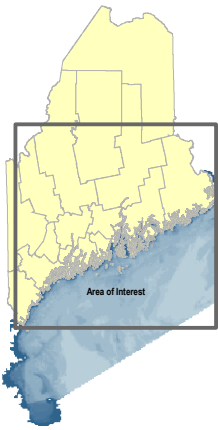
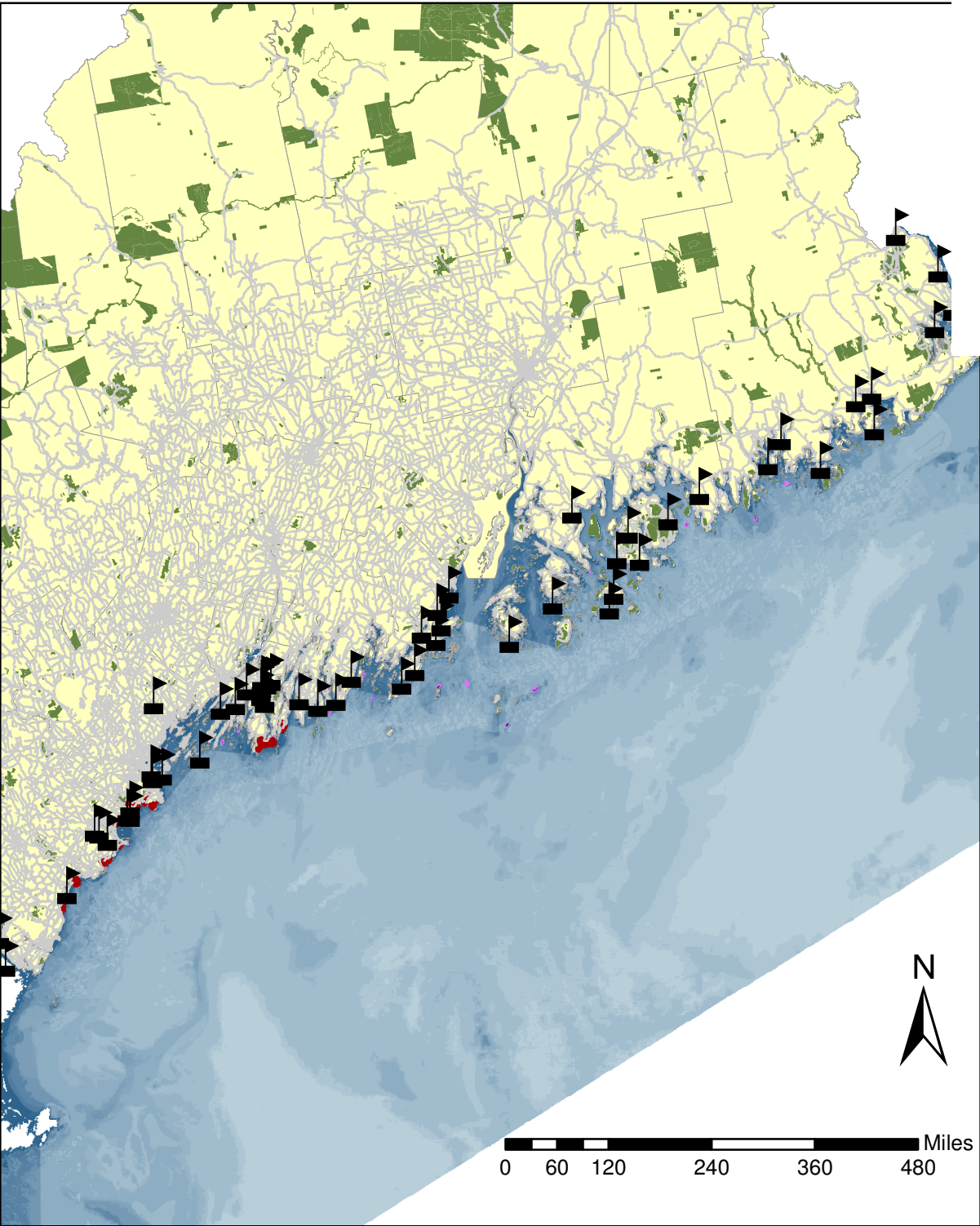


# Conservation Land and Human Presence Surrounding Roseate Tern, Lest Tern and Piping Plover Nest Sites in Maine



The shore birds represented in this map are all considered threatened or endangered. Human activity in and around their nesting and brooding sites can result in reduced survival of young. The intent of this map is to indicate the presence of human activity and conservation efforts centered around this habitat.

**Legend**

- Piping Plover and Lest Tern Nesting Areas
- Roseate Tern Nesting Areas
- Conservation Land
- Nesting areas in conservation land
- Public Roads
- Coastal Boat Launches
- Marine and Estuarine Habitat Quality

Map created by Rachel Terry  
 March 2006 using ArcGIS for  
 Environmental Studies 212, Colby College  
 Data provided by Maine Office of GIS.  
 NAD 1983, UTM Zone 19N

