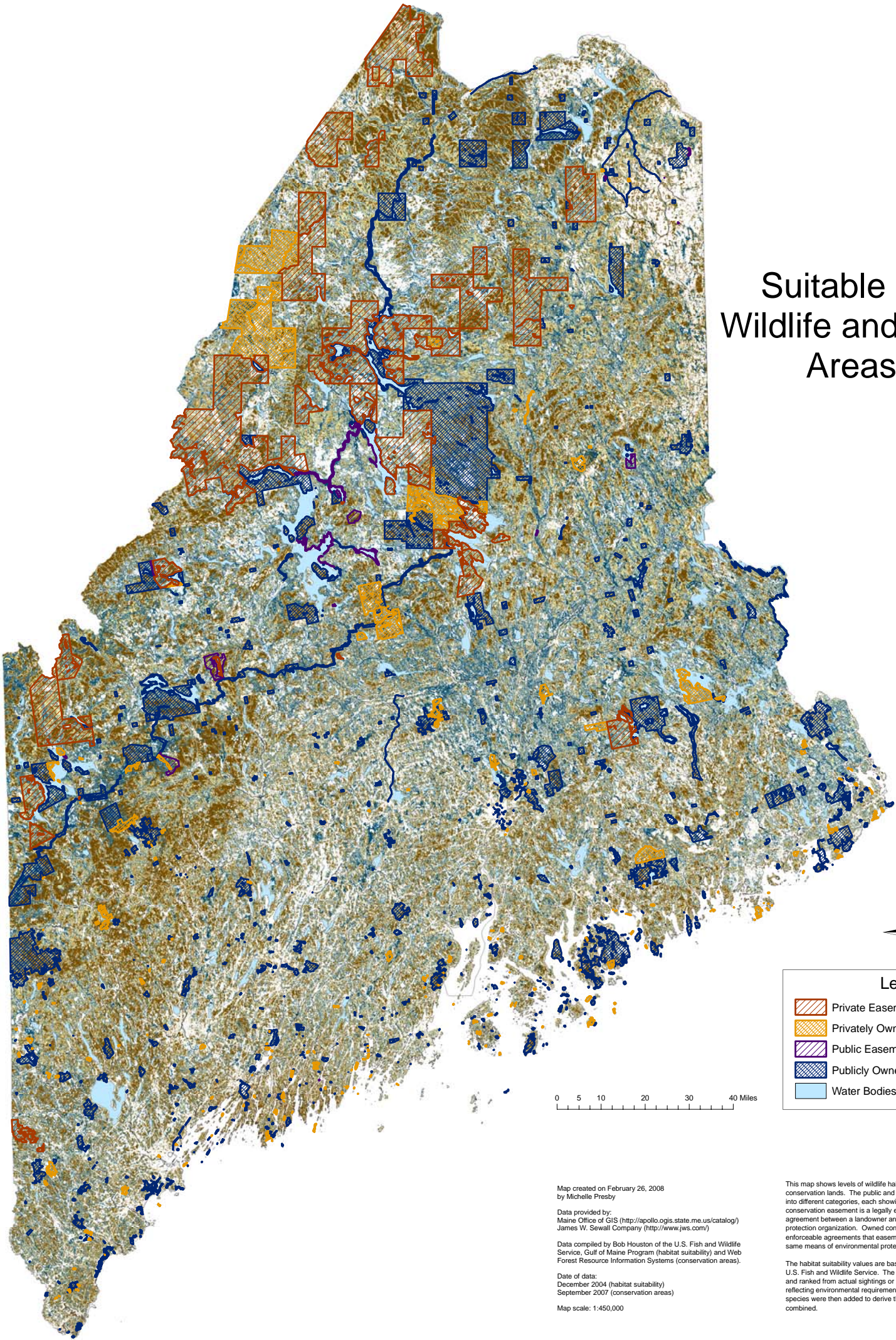


Suitable Habitats for Wildlife and Conservation Areas in Maine



Map created on February 26, 2008
by Michelle Presby

Data provided by:
Maine Office of GIS (<http://apollo.gis.state.me.us/catalog/>)
James W. Sewall Company (<http://www.jws.com/>)

Data compiled by Bob Houston of the U.S. Fish and Wildlife
Service, Gulf of Maine Program (habitat suitability) and Web
Forest Resource Information Systems (conservation areas).

Date of data:
December 2004 (habitat suitability)
September 2007 (conservation areas)

Map scale: 1:450,000

This map shows levels of wildlife habitat suitability in relationship to Maine's conservation lands. The public and private sectors have been separated into different categories, each showing easements and owned land. A conservation easement is a legally enforceable land preservation agreement between a landowner and a municipality or other qualified land protection organization. Owned conservation lands do not have the enforceable agreements that easements do, but can be used to achieve the same means of environmental protection for an area.

The habitat suitability values are based on 91 priority trust species of the U.S. Fish and Wildlife Service. The habitats for each species were mapped and ranked from actual sightings or by developing habitat suitability models reflecting environmental requirements for each species. Scores for each species were then added to derive the sum of scores for all species combined.