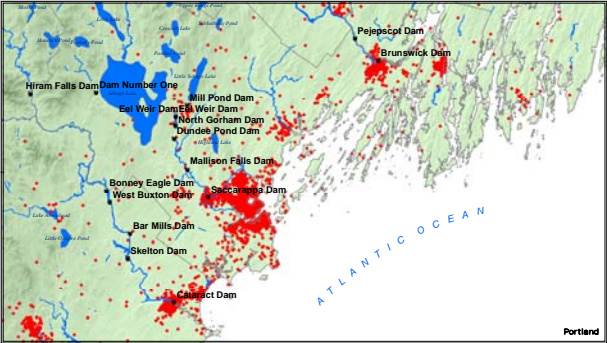
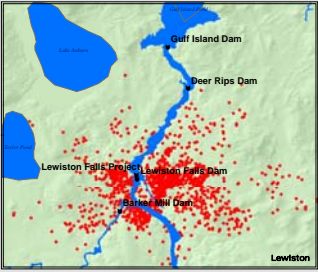
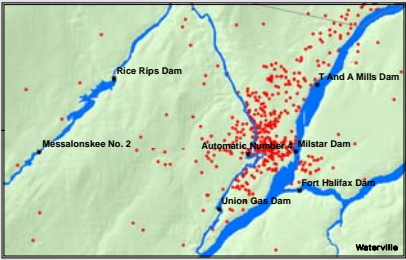
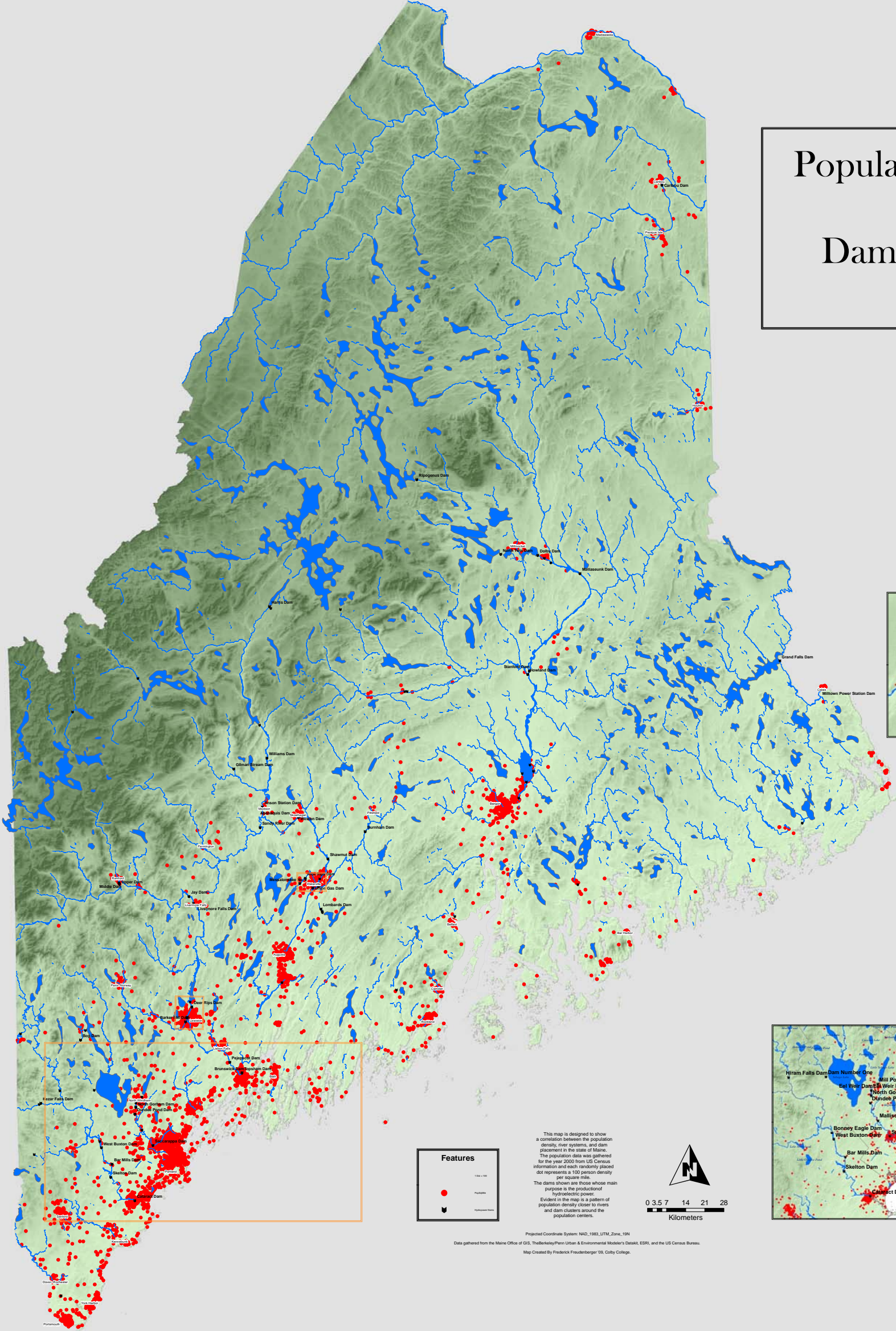
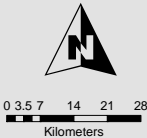


Population Density and Dams in Maine 2000



This map is designed to show a correlation between the population density, river systems, and dam placement in the state of Maine. The population data was gathered for the year 2000 from US Census information and each randomly placed dot represents a 100 person density per square mile. The dams shown are those whose main purpose is the production of hydroelectric power. Evident in the map is a pattern of population density closer to rivers and dam clusters around the population centers.



Projected Coordinate System: NAD_1983_UTM_Zone_18N
Data gathered from the Maine Office of GIS, The Berkeley/Penn Urban & Environmental Modeling's Dataset, ESRI, and the US Census Bureau.
Map Created By Frederick Frobenberger '08, Colby College.