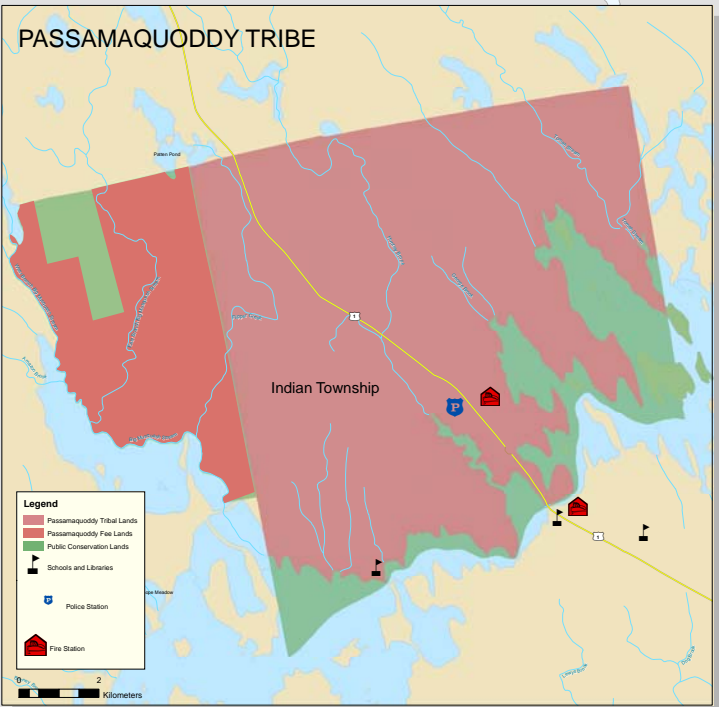
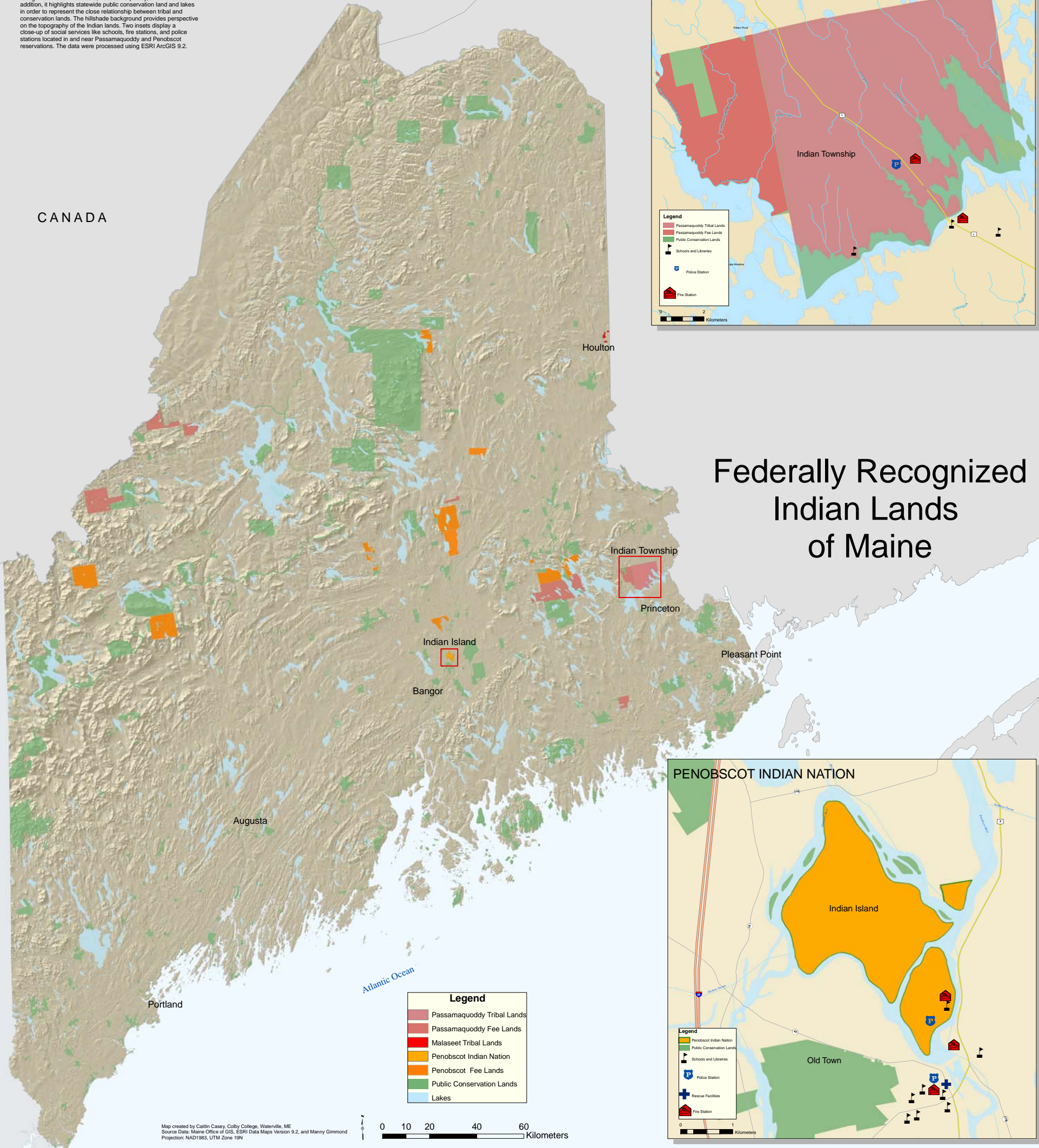


This map of federally recognized Indian lands in Maine was created using data from the Maine Office of GIS and Manny Gimond. The map shows the land holdings of the State's three federally recognized tribes: Maliseet, Passamaquoddy, and Penobscot. In addition, it highlights statewide public conservation land and lakes in order to represent the close relationship between tribal and conservation lands. The hillshade background provides perspective on the topography of the Indian lands. Two insets display a close-up of social services like schools, fire stations, and police stations located in and near Passamaquoddy and Penobscot reservations. The data were processed using ESRI ArcGIS 9.2.

CANADA



# Federally Recognized Indian Lands of Maine

- Legend**
- Passamaquoddy Tribal Lands
  - Passamaquoddy Fee Lands
  - Maliseet Tribal Lands
  - Penobscot Indian Nation
  - Penobscot Fee Lands
  - Public Conservation Lands
  - Lakes

